

Legend

- Proposed Alignment
- Open Space Area - Construction Impact
- Proposed Designation
- Proposed Sub-Surface Designation
- Replacement New Open Space Area
- Open Space Area - Operation Impact
- Retained Open Space Area Following Construction

This map contains data derived in part or wholly from sources other than Beca, and therefore, no representations or warranties are made by Beca as to the accuracy or completeness of this information.

Map intended for distribution as a PDF document.

Scale may be incorrect when printed.

Contains Crown Copyright Data. Crown Copyright Reserved.

Note:
The open space zone boundaries defined in the Auckland City District Plan Planning Maps have determined the existing open space areas shown and the associated calculations. A minimum of a 5m buffer area has been applied to the outside of the proposed alignment in all areas to illustrate the approximate operational open space impact.(It is noted that a 30m buffer area has been provided in Waterview Reserve to provide appropriate screening of the motorway structures).

Reserve Name	Existing Open Space Area (ha)	Existing Open Space Area - Construction Impact (ha)	Approximate Existing Open Space Area - Operation Impact (ha)	Retained Approximate Open Space Area (ha)	Proposed New Open Space Area (ha)	Balance of New vs Operational Impact on Open Space (ha)
Waterview Reserve	2.53	-2.53	-1.74	0.79	1.56	-0.18
Waterview Esplanade	2.39	-0.15	0.00	2.39	0.15	0.15
Oakley Creek Esplanade Reserve	8.80	-2.69	-0.12	8.68	0.40	0.27
Cowley Reserve	0.14	-0.14	0.00	0.14	0.19	0.19
Saxon Reserve	0.25	0.00	0.00	0.25	0.30	0.30
Total	14.12	-5.51	-1.87	12.25	2.60	0.74

Scale 1:4,000 at A3

0 15 30 60 90 120 150 Metres

Revision	By	Verified	Appd	Date
Rev1	AYF	OK	AH4	05/07/10
Rev2	AYF	TM3	AH4	29/10/10
Rev3	AYF	OK	AH4	31/08/11

Title:

Proposed Open Space Impacts and Replacement

Waterview Reserve, Waterview Esplanade Reserve, Oakley Creek Esplanade Reserve, Saxon Reserve and Cowley Reserve

Client:

NZTA

Project: Waterview Connection Project SH16/SH20

Discipline:

GIS

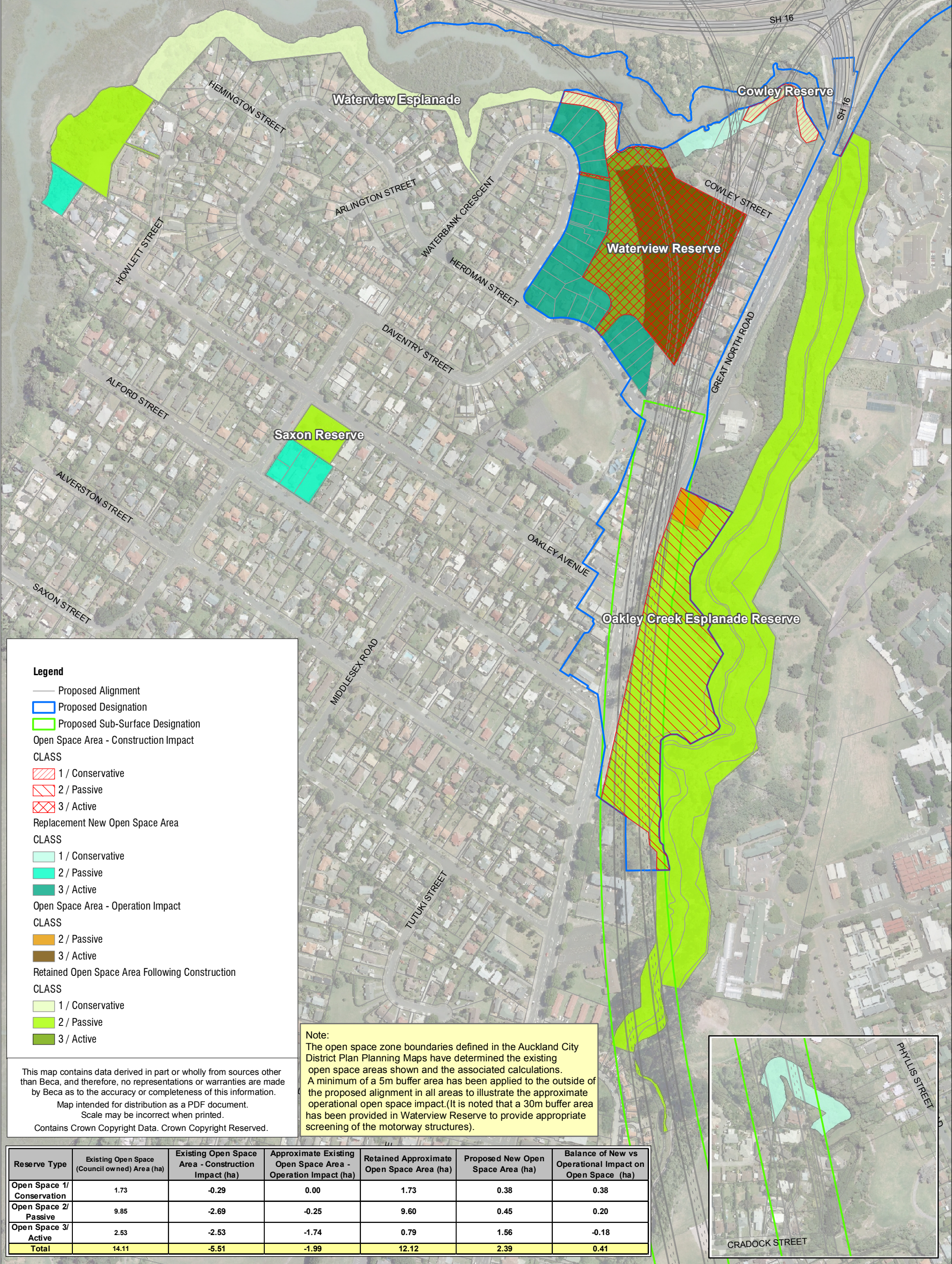
Drawing No:

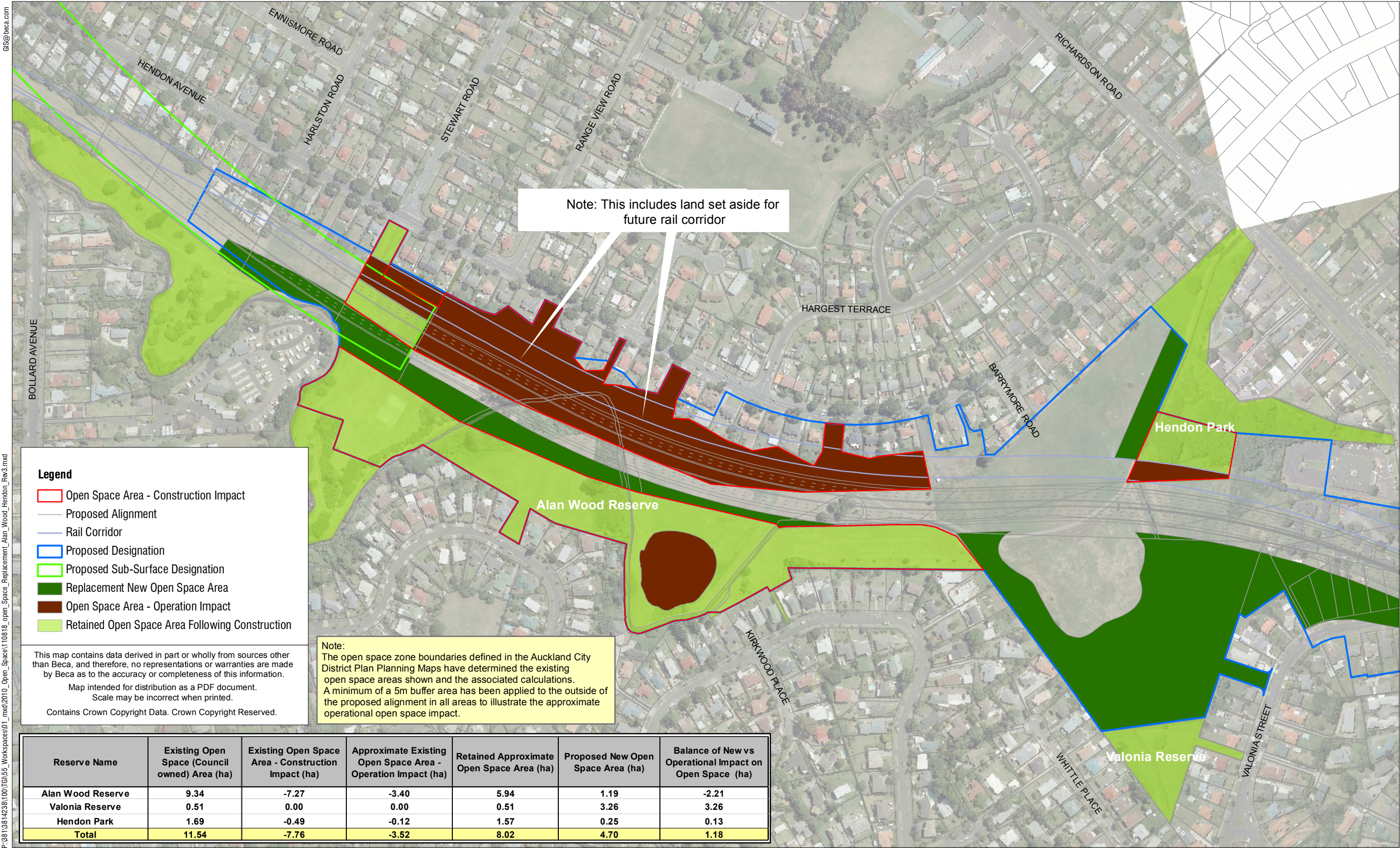
GIS-3814238-23

N

BECA

Path: P:\381\3814238\100\TGI\55_Workspaces\01_mxd\2010_Open_Space_Replacement_Waterview_Reserve_By_OS_type_Rev2.mxd





P:\3813814238\100\TGI\55_Workspaces\01_mxd\2010_Open_Space\110818_Open_Space_Replacement_Alan_Wood_Hendon_Rev3.mxd

Legend

- Open Space Area - Construction Impact
- Proposed Alignment
- Rail Corridor
- Proposed Designation
- Proposed Sub-Surface Designation
- Replacement New Open Space Area
- Open Space Area - Operation Impact
- Retained Open Space Area Following Construction

This map contains data derived in part or wholly from sources other than Beca, and therefore, no representations or warranties are made by Beca as to the accuracy or completeness of this information.

Map intended for distribution as a PDF document.
Scale may be incorrect when printed.

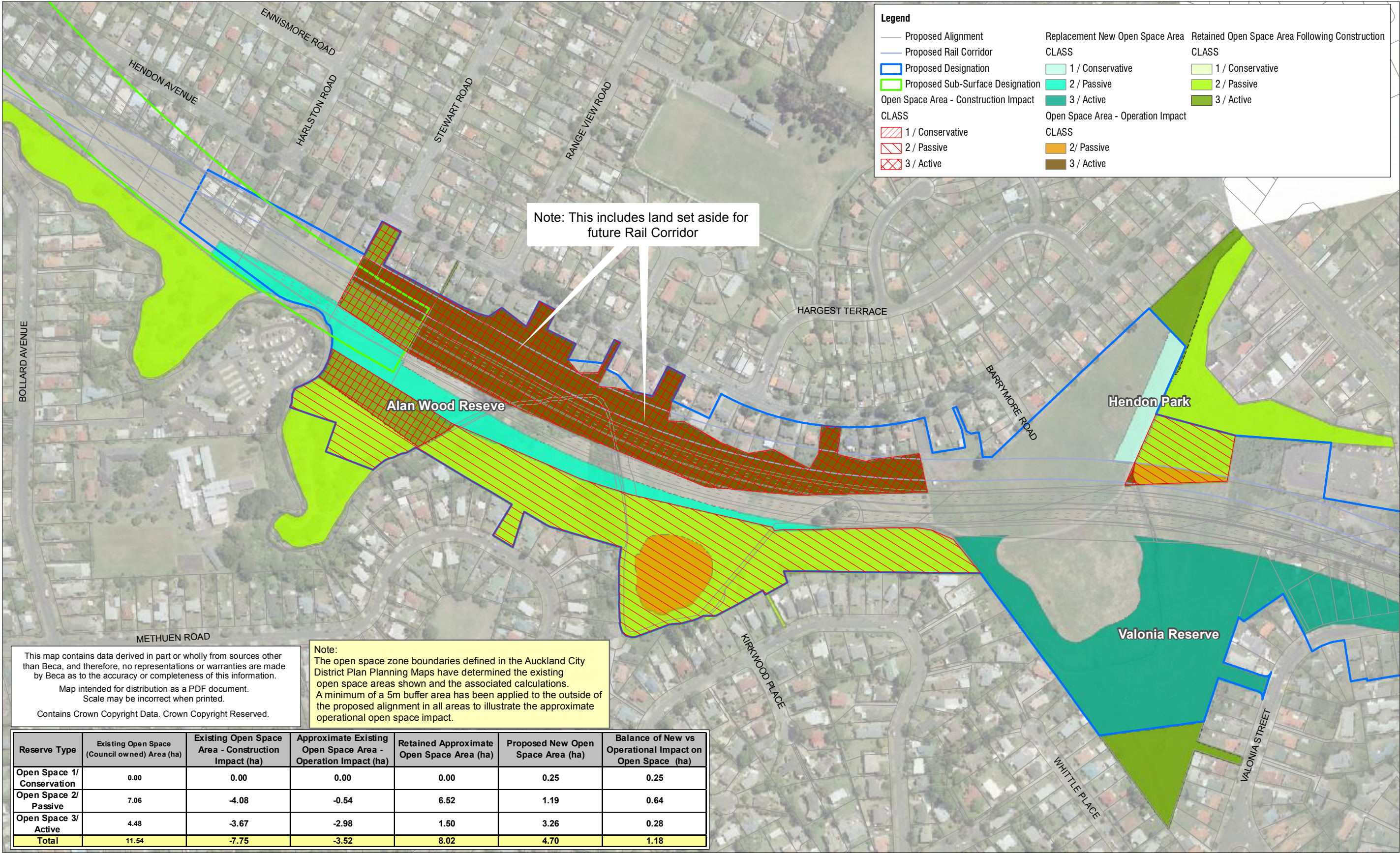
Contains Crown Copyright Data. Crown Copyright Reserved.

Note:
The open space zone boundaries defined in the Auckland City District Plan Planning Maps have determined the existing open space areas shown and the associated calculations. A minimum of a 5m buffer area has been applied to the outside of the proposed alignment in all areas to illustrate the approximate operational open space impact.

Reserve Name	Existing Open Space (Council owned) Area (ha)	Existing Open Space Area - Construction Impact (ha)	Approximate Existing Open Space Area - Operation Impact (ha)	Retained Approximate Open Space Area (ha)	Proposed New Open Space Area (ha)	Balance of New vs Operational Impact on Open Space (ha)
Alan Wood Reserve	9.34	-7.27	-3.40	5.94	1.19	-2.21
Valonia Reserve	0.51	0.00	0.00	0.51	3.26	3.26
Hendon Park	1.69	-0.49	-0.12	1.57	0.25	0.13
Total	11.54	-7.76	-3.52	8.02	4.70	1.18

GIS@beca.com

P:\381\38142381\00\GIS\5. Workspaces\01_rmd\2010_Open_Space_Replacement_Alan_Wood_Hendon_By_OS_type_rev2.mxd



This map contains data derived in part or wholly from sources other than Beca, and therefore, no representations or warranties are made by Beca as to the accuracy or completeness of this information.
Map intended for distribution as a PDF document.
Scale may be incorrect when printed.
Contains Crown Copyright Data. Crown Copyright Reserved.

Note:
The open space zone boundaries defined in the Auckland City District Plan Planning Maps have determined the existing open space areas shown and the associated calculations. A minimum of a 5m buffer area has been applied to the outside of the proposed alignment in all areas to illustrate the approximate operational open space impact.

Reserve Type	Existing Open Space (Council owned) Area (ha)	Existing Open Space Area - Construction Impact (ha)	Approximate Existing Open Space Area - Operation Impact (ha)	Retained Approximate Open Space Area (ha)	Proposed New Open Space Area (ha)	Balance of New vs Operational Impact on Open Space (ha)
Open Space 1/ Conservation	0.00	0.00	0.00	0.00	0.25	0.25
Open Space 2/ Passive	7.06	-4.08	-0.54	6.52	1.19	0.64
Open Space 3/ Active	4.48	-3.67	-2.98	1.50	3.26	0.28
Total	11.54	-7.75	-3.52	8.02	4.70	1.18

Scale 1:3,500 at A3
0 15 30 60 90 120 150 Metres

Revision	By	Verified	Appd	Date
Rev1	AYF	AH4	AH4	20/01/11
Rev2	AYF	OK	AH4	31/08/11

Title:
**Proposed Open Space
Impacts and Replacement by Open Space Class**
Alan Wood Reserve/Hendon Park/Valonia Reserve

Client:
NZTA

Project:
Waterview Connection
Project
SH16/SH20

Discipline:
GIS

Drawing No:
GIS-3814238-23