

# NZ TRANSPORT AGENCY EAST WEST LINK

## PACKAGE FOR BOARD OF INQUIRY



NOTE: THIS PLAN SET CONTAINS THE DESIGNATION AND ROAD ALIGNMENT PROVIDED TO THE BOARD OF INQUIRY AT THE TRANSPORT AGENCY CLOSING SUBMISSION 14 SEPTEMBER 2017

FOR BOI ISSUE

3	BOARD OF INQUIRY AMENDMENT	RT	NN*	JC*	22.09.2017
2	BOARD OF INQUIRY	RT	NN*	JC*	27.06.2017
1	ISSUED FOR CONSENT - GSR GRADE SEPARATION	AR	NN*	PK*	14.12.2016
0	ISSUED FOR CONSENT	AR	NN*	PK*	01.12.2016
No.	Issued Status	Drawn	Check'd	App'd	Date

**DISCLAIMER**  
This drawing is for the purpose of supporting applications under the RMA for resource consents and designations. All information shown is subject to final design. Areas and measurements are subject to survey. Where the designs conflict with conditions the conditions will prevail. This Drawing **must not** be used for construction



**East West Link**

Drawn A RAM	Drafting Check J MURAHIDY	Reviewed Design Manager N NANCEKIVELL	Approved Alliance Manager J CALDWELL
Designed A RAM	Design Check J MURAHIDY	Contract No <b>PA4014</b>	
Scale: Original Scale (A1)	Reduced Scale (A3)	AS SHOWN	Drawing Number Layout1

Drawing Title <b>EAST WEST LINK COVER SHEET</b>	Rev No. 2
--	--------------

EAST WEST LINK DRAWING REGISTER						
DWG NUMBER	DRAWING TITLE	CURRENT REVISION	DATE AND REVISION			
			23/05/2017	27/06/2017	3/07/2017	13/09/2017
	PLAN SET 1 - GENERAL DRAWINGS					
AEE-G-001	EAST WEST LINK - COVER PAGE	2	1	2		2
AEE-G-011	EAST WEST LINK - DRAWING REGISTER - SHEET 1	4	2	3		4
AEE-G-012	EAST WEST LINK - DRAWING REGISTER - SHEET 2	4	2	3		4
AEE-G-013	EAST WEST LINK - DRAWING REGISTER - SHEET 3	4	2	3		4
AEE-G-014	EAST WEST LINK - DRAWING REGISTER - SHEET 4	4	2	3		4
AEE-G-015	EAST WEST LINK - DRAWING REGISTER - SHEET 5	4	2	3		4
AEE-G-021	EAST WEST LINK - OVERALL LEGEND - SHEET 1	2	1	2		2
AEE-G-022	EAST WEST LINK - OVERALL LEGEND - SHEET 2	3	1	2		3
AEE-G-100	EAST WEST LINK - OVERVIEW PLAN - SHEET LAYOUT	3	2	3		3
AEE-G-101	GENERAL ARRANGEMENT - EAST WEST LINK - NEILSON ST INTERCHANGE - SHEET 1	3	1	2		3
AEE-G-102	GENERAL ARRANGEMENT - EAST WEST LINK - EMBANKMENT - SHEET 2	3	1	2		3
AEE-G-103	GENERAL ARRANGEMENT - EAST WEST LINK - EMBANKMENT/ ANNS CREEK - SHEET 3	3	1	2		3
AEE-G-104	GENERAL ARRANGEMENT - EAST WEST LINK - ANNS CREEK/ SYLVIA PARK ROAD - SHEET 4	4	2	3		4
AEE-G-105	GENERAL ARRANGEMENT - EAST WEST LINK - SH 1/ SYLVIA PARK RAMPS - SHEET 5	3	1	2		3
AEE-G-106	GENERAL ARRANGEMENT - EAST WEST LINK - SH1/ PRINCES STREET INTERCHANGE - SHEET 6	3	1	2		3
	PLAN SET 2 - SECTORS					
AEE-SEC-001	SECTOR - EAST WEST LINK - DRAWING INDEX AND LEGEND	4	2	3		4
AEE-SEC-011	SECTOR - EAST WEST LINK - LAYOUT	3	2	3		3
	PLAN SET 3 - ROAD ALIGNMENT					
AEE-AL-001	ROAD ALIGNMENT - EAST WEST LINK - DRAWING INDEX, NOTES AND LEGEND	4	3	4	4	
AEE-AL-100	ROAD ALIGNMENT - EAST WEST LINK - OVERVIEW PLAN	4	3	4	4	
AEE-AL-101	ROAD ALIGNMENT - SH20/NEILSON STREET INTERCHANGE - SHEET 1	3	2	3	3	
AEE-AL-102	ROAD ALIGNMENT - NEILSON STREET INTERCHANGE - SHEET 2	3	2	3	3	
AEE-AL-103	ROAD ALIGNMENT - GALWAY STREET - SHEET 3	3	2	3	3	
AEE-AL-104	ROAD ALIGNMENT - EMBANKMENT - SHEET 4	4	2	3	4	4
AEE-AL-105	ROAD ALIGNMENT - EMBANKMENT - SHEET 5	3	2	3	3	
AEE-AL-106	ROAD ALIGNMENT - EMBANKMENT/ANNS CREEK - SHEET 6	3	2	3	3	
AEE-AL-107	ROAD ALIGNMENT - ANNS CREEK - SHEET 7	4	3	4	4	
AEE-AL-108	ROAD ALIGNMENT - ANNS CREEK/SYLVIA PARK ROAD - SHEET 8	4	3	4	4	

EAST WEST LINK DRAWING REGISTER						
DWG NUMBER	DRAWING TITLE	CURRENT REVISION	DATE AND REVISION			
			23/05/2017	27/06/2017	3/07/2017	13/09/2017
AEE-AL-109	ROAD ALIGNMENT - SH1/SYLVIA PARK RAMPS - SHEET 9	4	3	4	4	
AEE-AL-110	ROAD ALIGNMENT - SH1/SYLVIA PARK RAMPS - SHEET 10	3	2	3	3	
AEE-AL-111	ROAD ALIGNMENT - SH1/PANAMA ROAD - SHEET 11	3	2	3	3	
AEE-AL-112	ROAD ALIGNMENT - SH1/OTAHUHU CREEK - SHEET 12	2	2	2	2	
AEE-AL-113	ROAD ALIGNMENT - PRINCES STREET INTERCHANGE - SHEET 13	3	2	3	3	
AEE-AL-114	ROAD ALIGNMENT - NEILSON STREET INTERCHANGE - LOCAL ROADS - SHEET 14A AND 14B	3	2	3	3	
AEE-AL-115	ROAD ALIGNMENT - CAPTAIN SPRINGS ROAD/ PORTS LINK - SHEET 15A AND 15B	3	2	3	3	
AEE-AL-116	ROAD ALIGNMENT - EMBANKMENT - SHEET 16	2	2	2	2	
	PLAN SET 4 - LANDSCAPE					
AEE-LA-001	LANDSCAPE - EAST WEST LINK - DRAWING INDEX AND LEGEND	3	2	3		
AEE-LA-100	LANDSCAPE - EAST WEST LINK - OVERVIEW PLAN AND LEGEND	3	2	3		
AEE-LA-101	LANDSCAPE - SH20/NEILSON STREET INTERCHANGE - SHEET 1	2	1	2		
AEE-LA-102	LANDSCAPE - NEILSON STREET INTERCHANGE - SHEET 2	2	1	2		
AEE-LA-103	LANDSCAPE - EAST WEST LINK / GALWAY STREET - SHEET 3	2	1	2		
AEE-LA-104	LANDSCAPE - EMBANKMENT - SHEET 4	2	1	2		
AEE-LA-105	LANDSCAPE - EMBANKMENT - SHEET 5	2	1	2		
AEE-LA-106	LANDSCAPE - EMBANKMENT/ANNS CREEK - SHEET 6	2	1	2		
AEE-LA-107	LANDSCAPE - ANNS CREEK - SHEET 7	2	1	2		
AEE-LA-108	LANDSCAPE - ANNS CREEK/SYLVIA PARK ROAD - SHEET 8	3	2	3		
AEE-LA-109	LANDSCAPE - SH1/SYLVIA PARK RAMPS - SHEET 9	3	2	3		
AEE-LA-110	LANDSCAPE - SH1/SYLVIA PARK RAMPS - SHEET 10	2	1	2		
AEE-LA-111	LANDSCAPE - SH1/PANAMA ROAD - SHEET 11	2	1	2		
AEE-LA-112	LANDSCAPE - SH1/OTAHUHU CREEK - SHEET 12	2	1	2		
AEE-LA-113	LANDSCAPE - PRINCES STREET INTERCHANGE - SHEET 13	2	1	2		
AEE-LA-114	LANDSCAPE - NEILSON STREET INTERCHANGE - LOCAL ROADS - SHEET 14A AND 14B	2	1	2		
AEE-LA-115	LANDSCAPE - CAPTAIN SPRINGS ROAD/ PORTS LINK - SHEET 15A AND 15B	2	1	2		
AEE-LA-116	LANDSCAPE - EMBANKMENT - SHEET 16	2	1	2		
AEE-LA-201	LANDSCAPE - 2D CROSS SECTIONS - SHEET 1	1	1	1		
AEE-LA-202	LANDSCAPE - 2D CROSS SECTIONS - SHEET 2	1	1	1		
AEE-LA-203	LANDSCAPE - 2D CROSS SECTIONS - SHEET 3	1	1	1		
AEE-LA-204	LANDSCAPE - 2D CROSS SECTIONS - SHEET 4	1	1	1		

4	BOARD OF INQUIRY AMENDMENT	RT	NN*	JC*	22.09.2017
3	BOARD OF INQUIRY	RT	NN*	JC*	27.06.2017
2	ISSUED FOR CONFERENCING	TD	NN*	JC*	23.05.2017
1	ISSUED FOR CONSENT - GSR GRADE SEPARATION	AR	NN*	PK*	14.12.2016
No.	Issued Status	Drawn	Check'd	App'd	Date

**DISCLAIMER**  
This drawing is for the purpose of supporting applications under the RMA for resource consents and designations. All information shown is subject to final design. Areas and measurements are subject to survey. Where the designs conflict with conditions the conditions prevail. This Drawing **must not** be used for construction



Drawn	A RAM	Drafting Check	J MURAHIDY	Reviewed	Design Manager	Approved	Alliance Manager
Designed	A RAM	Design Check	J MURAHIDY		N NANCEKIVELL		J CALDWELL
Scale:	Original Scale (A1)	Reduced Scale (A3)	AS SHOWN	Contract No.	PA4014		

Drawing Title	EAST WEST LINK DRAWING REGISTER SHEET 01 OF 05		
Drawing Number	AEE-G-011	Rev No.	4

**FOR BOI ISSUE**



EAST WEST LINK DRAWING REGISTER						
DWG NUMBER	DRAWING TITLE	CURRENT REVISION	DATE AND REVISION			
			23/05/2017	27/06/2017	3/07/2017	13/09/2017
AEE-LA-205	LANDSCAPE - 2D CROSS SECTIONS - SHEET 5	1	1			1
AEE-LA-206	LANDSCAPE - 2D CROSS SECTIONS - SHEET 6	2	2			2
AEE-LA-207	LANDSCAPE - 2D CROSS SECTIONS - SHEET 7	1	1			1
AEE-LA-208	LANDSCAPE - 2D CROSS SECTIONS - SHEET 8	1	1			1
AEE-LA-209	LANDSCAPE - 2D CROSS SECTIONS - SHEET 9	1	1			1
AEE-LA-210	LANDSCAPE - 2D CROSS SECTIONS - SHEET 10	1	1			1
AEE-LA-211	LANDSCAPE - 2D CROSS SECTIONS - SHEET 11	1	1			1
AEE-LA-301	LANDSCAPE - 3D SECTION PERSPECTIVES - SHEET 1	1	1			1
AEE-LA-302	LANDSCAPE - 3D SECTION PERSPECTIVES - SHEET 2	1	1			1
AEE-LA-303	LANDSCAPE - 3D SECTION PERSPECTIVES - SHEET 3	1	1			1
AEE-LA-304	LANDSCAPE - 3D SECTION PERSPECTIVES - SHEET 4	1	1			1
AEE-LA-305	LANDSCAPE - 3D SECTION PERSPECTIVES - SHEET 5	1	1			1
AEE-LA-306	LANDSCAPE - 3D SECTION PERSPECTIVES - SHEET 6	1	1			1
AEE-LA-307	LANDSCAPE - 3D SECTION PERSPECTIVES - SHEET 7	1	1			1
AEE-LA-308	LANDSCAPE - 3D SECTION PERSPECTIVES - SHEET 8	1	1			1
AEE-LA-309	LANDSCAPE - 3D SECTION PERSPECTIVES - SHEET 9	1	1			1
AEE-LA-310	LANDSCAPE - 3D SECTION PERSPECTIVES - SHEET 10	1	1			1
AEE-LA-311	LANDSCAPE - 3D SECTION PERSPECTIVES - SHEET 11	1	1			1
AEE-LA-312	LANDSCAPE - 3D SECTION PERSPECTIVES - SHEET 12	1	1			1
AEE-LA-401	LANDSCAPE - PLANTING PALETTE - SHEET 1	1	1			1
AEE-LA-402	LANDSCAPE - PLANTING PALETTE - SHEET 2	1	1			1
AEE-LA-403	LANDSCAPE - PLANTING PALETTE - SHEET 3	1	1			1
AEE-LA-404	LANDSCAPE - PLANTING PALETTE - SHEET 4	1	1			1
AEE-LA-405	LANDSCAPE - PLANTING PALETTE - SHEET 5	1	1			1
AEE-LA-406	LANDSCAPE - PLANTING PALETTE - SHEET 6	1	1			1
AEE-LA-407	LANDSCAPE - PLANTING PALETTE - SHEET 7	1	1			1
	PLAN SET 5 - COASTAL OCCUPATION					
AEE-CMA-001	COASTAL OCCUPATION - EAST WEST LINK - DRAWING INDEX, NOTES AND LEGEND	2	1			2
AEE-CMA-101	COASTAL OCCUPATION - EMBANKMENT - OVERVIEW	2	1			2
AEE-CMA-102	COASTAL OCCUPATION - EMBANKMENT - SHEET 1	2	1			2
AEE-CMA-103	COASTAL OCCUPATION - EMBANKMENT - SHEET 2	2	1			2
AEE-CMA-104	COASTAL OCCUPATION - EMBANKMENT - SHEET 3	2	1			2

EAST WEST LINK DRAWING REGISTER						
DWG NUMBER	DRAWING TITLE	CURRENT REVISION	DATE AND REVISION			
			23/05/2017	27/06/2017	3/07/2017	13/09/2017
AEE-CMA-111	COASTAL OCCUPATION - OTAHUHU CREEK	1	1			1
AEE-CMA-301	COASTAL OCCUPATION - EAST WEST LINK - TYPICAL SECTIONS	1	1			1
	PLAN SET 6 - PLAN AND LONG SECTION					
AEE-C-001	ROAD ALIGNMENT - EAST WEST LINK - PLAN AND LONG SECTION - DRAWING INDEX	3	2			3
AEE-C-201	ROAD ALIGNMENT - PLAN AND LONG SECTION - OVERALL ALIGNMENT - MC00 - SHEET 1	1	1			1
AEE-C-202	ROAD ALIGNMENT - PLAN AND LONG SECTION - OVERALL ALIGNMENT - MC00 - SHEET 2	2	1	2	2	
AEE-C-203	ROAD ALIGNMENT - PLAN AND LONG SECTION - OVERALL ALIGNMENT - MC00 - SHEET 3	1	1			1
AEE-C-204	ROAD ALIGNMENT - PLAN AND LONG SECTION - OVERALL ALIGNMENT - MC00 - SHEET 4	1	1			1
AEE-C-205	ROAD ALIGNMENT - PLAN AND LONG SECTION - OVERALL ALIGNMENT - MC00 - SHEET 5	1	1			1
AEE-C-206	ROAD ALIGNMENT - PLAN AND LONG SECTION - OVERALL ALIGNMENT - MC00 - SHEET 6	1	1			1
AEE-C-207	ROAD ALIGNMENT - PLAN AND LONG SECTION - OVERALL ALIGNMENT - MC00 - SHEET 7	1	1			1
AEE-C-208	ROAD ALIGNMENT - PLAN AND LONG SECTION - OVERALL ALIGNMENT - MC00 - SHEET 8	1	1			1
AEE-C-209	ROAD ALIGNMENT - PLAN AND LONG SECTION - OVERALL ALIGNMENT - MC00 - SHEET 9	1	1			1
AEE-C-210	ROAD ALIGNMENT - PLAN AND LONG SECTION - OVERALL ALIGNMENT - MC00 - SHEET 10	1	1			1
AEE-C-211	ROAD ALIGNMENT - PLAN AND LONG SECTION - OVERALL ALIGNMENT - MC00 - SHEET 11	1	1			1
AEE-C-212	ROAD ALIGNMENT - PLAN AND LONG SECTION - OVERALL ALIGNMENT - MC00 - SHEET 12	1	1			1
AEE-C-213	ROAD ALIGNMENT - PLAN AND LONG SECTION - OVERALL ALIGNMENT - MC00 - SHEET 13	1	1			1
AEE-C-214	ROAD ALIGNMENT - PLAN AND LONG SECTION - OVERALL ALIGNMENT - MC00 - SHEET 14	1	1			1
AEE-C-231	ROAD ALIGNMENT - CAPTAIN SPRINGS - PLAN AND LONG SECTION - MCP0 - SHEET 1	1	1			1
AEE-C-232	ROAD ALIGNMENT - CAPTAIN SPRINGS - PLAN AND LONG SECTION - MCP0 - SHEET 2	1	1			1
AEE-C-233	ROAD ALIGNMENT - PORTS LINK - PLAN AND LONG SECTION - MCR0 - SHEET 1	1	1			1
AEE-C-234	ROAD ALIGNMENT - PORTS LINK - PLAN AND LONG SECTION - MCR0 - SHEET 2	1	1			1
AEE-C-241	ROAD ALIGNMENT - SYLVIA PARK NB OFF RAMP - PLAN AND LONG SECTION - MC00 - SHEET 1	2	2			2
AEE-C-242	ROAD ALIGNMENT - SYLVIA PARK NB OFF RAMP - PLAN AND LONG SECTION - MC00 - SHEET 2	2	2			2
AEE-C-243	ROAD ALIGNMENT - SYLVIA PARK NB OFF RAMP - PLAN AND LONG SECTION - MC00 - SHEET 3	2	2			2
AEE-C-245	ROAD ALIGNMENT - MT WELLINGTON OFF RAMP - PLAN AND LONG SECTION - MCK0 - SHEET 1	1	1			1
AEE-C-246	ROAD ALIGNMENT - MT WELLINGTON OFF RAMP - PLAN AND LONG SECTION - MCK0 - SHEET 2	1	1			1
AEE-C-247	ROAD ALIGNMENT - MT WELLINGTON OFF RAMP - PLAN AND LONG SECTION - MCK0 - SHEET 3	1	1			1
AEE-C-251	ROAD ALIGNMENT - PRINCES STREET INTERCHANGE - PLAN AND LONG SECTION - MC40	1	1			1
AEE-C-252	ROAD ALIGNMENT - PRINCES STREET INTERCHANGE - PLAN AND LONG SECTION - MC50 - SHEET 1	1	1			1
AEE-C-253	ROAD ALIGNMENT - PRINCES STREET INTERCHANGE - PLAN AND LONG SECTION - MC50 - SHEET 2	1	1			1
AEE-C-254	ROAD ALIGNMENT - PRINCES STREET INTERCHANGE - PLAN AND LONG SECTION - MCA0	1	1			1

FOR BOI ISSUE

4	BOARD OF INQUIRY AMENDMENT	RT	NN	JC	22.09.2017
3	BOARD OF INQUIRY	RT	NN	JC	27.06.2017
2	ISSUED FOR CONFERENCING	TD	NN*	JC	23.05.2017
1	ISSUED FOR CONSENT - GSR GRADE SEPARATION	AR	NN*	PK*	14.12.2016
No.	Issued Status	Drawn	Check'd	App'd	Date

**DISCLAIMER**  
This drawing is for the purpose of supporting applications under the RMA for resource consents and designations. All information shown is subject to final design. Areas and measurements are subject to survey. Where the designs conflict with conditions the conditions will prevail. This Drawing **must not** be used for construction



Drawn	A RAM	Drafting Check	J MURAHIDY	Reviewed Design Manager	N NANCEKIVELL	Approved Alliance Manager	J CALDWELL
Designed	A RAM	Design Check	J MURAHIDY				
Scale:	Original Scale (A1)	Reduced Scale (A3)	AS SHOWN	Contract No	PA4014		

Drawing Title	EAST WEST LINK DRAWING REGISTER SHEET 02 OF 05		
Drawing Number	AEE-G-012		
Rev No.	4		

EAST WEST LINK DRAWING REGISTER							
DWG NUMBER	DRAWING TITLE	CURRENT REVISION	DATE AND REVISION				
			23/05/2017	27/06/2017	3/07/2017	13/09/2017	22/09/2017
AEE-C-255	ROAD ALIGNMENT - PRINCES STREET INTERCHANGE - PLAN AND LONG SECTION - MCB0	1		1			1
AEE-C-256	ROAD ALIGNMENT - PRINCES STREET INTERCHANGE - PLAN AND LONG SECTION - MCE0	1		1			1
AEE-C-257	ROAD ALIGNMENT - PRINCES STREET INTERCHANGE - PLAN AND LONG SECTION - MCF0	1		1			1
AEE-C-261	ROAD ALIGNMENT - NEILSON STREET INTERCHANGE - PLAN AND LONG SECTION - MCA0	1		1			1
AEE-C-262	ROAD ALIGNMENT - NEILSON STREET INTERCHANGE - PLAN AND LONG SECTION - MCB0 - SHEET 1	1		1			1
AEE-C-263	ROAD ALIGNMENT - NEILSON STREET INTERCHANGE - PLAN AND LONG SECTION - MCB0 - SHEET 2	1		1			1
AEE-C-264	ROAD ALIGNMENT - NEILSON STREET INTERCHANGE - PLAN AND LONG SECTION - MCC0	1		1			1
AEE-C-266	ROAD ALIGNMENT - NEILSON STREET INTERCHANGE - PLAN AND LONG SECTION - MCD0 - SHEET 1	1		1			1
AEE-C-267	ROAD ALIGNMENT - NEILSON STREET INTERCHANGE - PLAN AND LONG SECTION - MCD0 - SHEET 2	1		1			1
AEE-C-268	ROAD ALIGNMENT - NEILSON STREET INTERCHANGE - PLAN AND LONG SECTION - MCE0 - SHEET 1	1		1			1
AEE-C-269	ROAD ALIGNMENT - NEILSON STREET INTERCHANGE - PLAN AND LONG SECTION - MCE0 - SHEET 2	1		1			1
AEE-C-270	ROAD ALIGNMENT - NEILSON STREET INTERCHANGE - PLAN AND LONG SECTION - MCH0 - SHEET 1	1		1			1
AEE-C-271	ROAD ALIGNMENT - NEILSON STREET INTERCHANGE - PLAN AND LONG SECTION - MCH0 - SHEET 2	1		1			1
AEE-C-272	ROAD ALIGNMENT - GALWAY LINK - PLAN AND LONG SECTION - MCJ0	1		1			1
AEE-C-277	ROAD ALIGNMENT - ONEHUNGA MALL - PLAN AND LONG SECTION - MC30 - SHEET 1	1		1			1
AEE-C-278	ROAD ALIGNMENT - ONEHUNGA HARBOUR ROAD - PLAN AND LONG SECTION - MC30 - SHEET 2	1		1			1
AEE-C-279	ROAD ALIGNMENT - ONEHUNGA HARBOUR ROAD - PLAN AND LONG SECTION - MC30 - SHEET 3	1		1			1
AEE-C-280	ROAD ALIGNMENT - ORPHEUS DRIVE - PLAN AND LONG SECTION - MC50 - SHEET 1	1		1			1
AEE-C-281	ROAD ALIGNMENT - ORPHEUS DRIVE - PLAN AND LONG SECTION - MC50 - SHEET 2	1		1			1
AEE-C-282	ROAD ALIGNMENT - ORPHEUS DRIVE - PLAN AND LONG SECTION - MC50 - SHEET 3	1		1			1
AEE-C-285	ROAD ALIGNMENT - EWL/GREAT SOUTH ROAD EB CONNECTION - PLAN AND LONG SECTION - MC30 - SHEET 1	1		1			1
AEE-C-286	ROAD ALIGNMENT - EWL/GREAT SOUTH ROAD EB CONNECTION - PLAN AND LONG SECTION - MC30 - SHEET 2	1		1			1
AEE-C-287	ROAD ALIGNMENT - EWL/GREAT SOUTH ROAD WB CONNECTION - PLAN AND LONG SECTION - MC40 - SHEET 1	1		1			1
AEE-C-288	ROAD ALIGNMENT - EWL/GREAT SOUTH ROAD WB CONNECTION - PLAN AND LONG SECTION - MC40 - SHEET 2	1		1			1
	PLAN SET 7 - TYPICAL CROSS SECTION						
AEE-C-002	ROAD ALIGNMENT - TYPICAL CROSS SECTION - DRAWING INDEX	2		2			2
AEE-C-300	ROAD ALIGNMENT - TYPICAL CROSS SECTION - SECTION MARKER	2		2			2
AEE-C-301	ROAD ALIGNMENT - TYPICAL CROSS SECTION - SHEET 1	1		1			1
AEE-C-302	ROAD ALIGNMENT - TYPICAL CROSS SECTION - SHEET 2	1		1			1
AEE-C-303	ROAD ALIGNMENT - TYPICAL CROSS SECTION - SHEET 3	1		1			1
AEE-C-304	ROAD ALIGNMENT - TYPICAL CROSS SECTION - SHEET 4	1		1			1
AEE-C-305	ROAD ALIGNMENT - TYPICAL CROSS SECTION - SHEET 5	1		1			1

EAST WEST LINK DRAWING REGISTER							
DWG NUMBER	DRAWING TITLE	CURRENT REVISION	DATE AND REVISION				
			23/05/2017	27/06/2017	3/07/2017	13/09/2017	22/09/2017
AEE-C-306	ROAD ALIGNMENT - TYPICAL CROSS SECTION - SHEET 6	1		1			1
AEE-C-307	ROAD ALIGNMENT - TYPICAL CROSS SECTION - SHEET 7	1		1			1
AEE-C-308	ROAD ALIGNMENT - TYPICAL CROSS SECTION - SHEET 8	1		1			1
AEE-C-309	ROAD ALIGNMENT - TYPICAL CROSS SECTION - SHEET 9	1		1			1
AEE-C-310	ROAD ALIGNMENT - TYPICAL CROSS SECTION - SHEET 10	1		1			1
AEE-C-311	ROAD ALIGNMENT - TYPICAL CROSS SECTION - SHEET 11	1		1			1
AEE-C-312	ROAD ALIGNMENT - TYPICAL CROSS SECTION - SHEET 12	1		1			1
AEE-C-313	ROAD ALIGNMENT - TYPICAL CROSS SECTION - SHEET 13	1		1			1
AEE-C-314	ROAD ALIGNMENT - TYPICAL CROSS SECTION - SHEET 14	1		1			1
AEE-C-315	ROAD ALIGNMENT - TYPICAL CROSS SECTION - CAPTAIN SPRINGS ROAD - SHEET 15	1		1			1
AEE-C-316	ROAD ALIGNMENT - TYPICAL CROSS SECTION - PORTS LINK - SHEET 16	1		1			1
AEE-C-317	ROAD ALIGNMENT - TYPICAL CROSS SECTION - GREAT SOUTH ROAD INTERSECTION - SHEET 17	1		1			1
AEE-C-321	GEOTECHNICAL - EMBANKMENT TYPICAL CROSS SECTION - SHEET 1	1		1			1
AEE-C-322	GEOTECHNICAL - EMBANKMENT TYPICAL CROSS SECTION - SHEET 2	1		1			1
AEE-C-323	GEOTECHNICAL - EMBANKMENT TYPICAL CROSS SECTION - SHEET 3	1		1			1
AEE-C-324	GEOTECHNICAL - EMBANKMENT TYPICAL CROSS SECTION - SHEET 4	1		1			1
	PLAN SET 8 - STRUCTURAL						
AEE-S-001	STRUCTURAL - EAST WEST LINK - DRAWING INDEX, NOTES AND LEGEND	2		2			
AEE-S-010	STRUCTURAL - KEY PLAN	2		2			
AEE-S-011	STRUCTURAL - SH20/ NEILSON ST INTERCHANGE OVERBRIDGE - PLAN AND LONG SECTION	1		1			
AEE-S-012	STRUCTURAL - SH20/ NEILSON ST INTERCHANGE OVERBRIDGE - TYPICAL CROSS SECTION	1		1			
AEE-S-014	STRUCTURAL - ONEHUNGA HARBOUR ROAD PEDESTRIAN/CYCLE BRIDGE - PLAN	1		1			
AEE-S-015	STRUCTURAL - ALFRED STREET PEDESTRIAN/CYCLE BRIDGE - PLAN	1		1			
AEE-S-016	STRUCTURAL - NEILSON STREET/ ONEHUNGA WHARF TRENCH - PLAN AND LONG SECTION	1		1			
AEE-S-017	STRUCTURAL - NEILSON STREET/ ONEHUNGA WHARF TRENCH - TYPICAL CROSS SECTIONS - SHEET 1	1		1			
AEE-S-018	STRUCTURAL - NEILSON STREET/ ONEHUNGA WHARF TRENCH - TYPICAL CROSS SECTIONS - SHEET 2	1		1			
AEE-S-021	STRUCTURAL - ANNS CREEK VIADUCT - WEST - PLAN AND LONG SECTION - SHEET 1	1		1			
AEE-S-022	STRUCTURAL - ANNS CREEK VIADUCT - WEST - PLAN AND LONG SECTION - SHEET 2	1		1			
AEE-S-023	STRUCTURAL - ANNS CREEK VIADUCT - WEST - PLAN AND LONG SECTION - SHEET 3	1		1			
AEE-S-024	STRUCTURAL - ANNS CREEK VIADUCT - EAST - PLAN AND LONG SECTION - SHEET 4	2		2			
AEE-S-025	STRUCTURAL - ANNS CREEK VIADUCT - EAST - PLAN AND LONG SECTION - SHEET 5	2		2			
AEE-S-031	STRUCTURAL - ANNS CREEK VIADUCT - TYPICAL CROSS SECTION - CONCRETE - SHEET 1	1		1			

FOR BOI ISSUE

4	BOARD OF INQUIRY AMENDMENT	RT	NN*	JC*	22.09.2017
3	BOARD OF INQUIRY	RT	NN*	JC*	27.06.2017
2	ISSUED FOR CONFERENCING	TD	NN*	JC*	23.05.2017
1	ISSUED FOR CONSENT - GSR GRADE SEPARATION	AR	NN*	PK*	14.12.2016
No.	Issued Status	Drawn	Checked	App'd	Date

**DISCLAIMER**  
This drawing is for the purpose of supporting applications under the RMA for resource consents and designations. All information shown is subject to final design. Areas and measurements are subject to survey. Where the designs conflict with conditions the conditions will prevail. This Drawing **must not** be used for construction



Drawn A RAM	Drafting Check J MURAHIDY	Reviewed Design Manager N NANCEKIVELL	Approved Alliance Manager J CALDWELL
Designed A RAM	Design Check J MURAHIDY	Contract No <b>PA4014</b>	
Scale: Original Scale (A1)	Reduced Scale (A3)	AS SHOWN	Drawing Number <b>AEE-G-013</b>

Drawing Title <b>EAST WEST LINK DRAWING REGISTER SHEET 03 OF 05</b>	Rev No. <b>4</b>
--	---------------------



EAST WEST LINK DRAWING REGISTER						
DWG NUMBER	DRAWING TITLE	CURRENT REVISION	DATE AND REVISION			
			23/05/2017	27/06/2017	3/07/2017	13/09/2017
AEE-S-032	STRUCTURAL - ANNS CREEK VIADUCT - TYPICAL CROSS SECTION - CONCRETE - SHEET 2	2		2		
AEE-S-033	STRUCTURAL - ANNS CREEK VIADUCT - TYPICAL CROSS SECTION - STEEL	2		2		
AEE-S-041	STRUCTURAL - EWLINK EB TO SH1 SB ON RAMP PLAN AND LONG SECTION - SHEET 1	2		2		
AEE-S-042	STRUCTURAL - EWLINK EB TO SH1 SB ON RAMP PLAN AND LONG SECTION - SHEET 2	2		2		
AEE-S-043	STRUCTURAL - EWLINK EB TO SH1 SB ON RAMP PLAN AND LONG SECTION - SHEET 3	2		2		
AEE-S-045	STRUCTURAL - EWLINK EB TO SH1 SB ON RAMP TYPICAL CROSS SECTION - CONCRETE	2		2		
AEE-S-046	STRUCTURAL - EWLINK EB TO SH1 SB ON RAMP TYPICAL CROSS SECTION - STEEL	2		2		
AEE-S-051	STRUCTURAL - SH1 NB TO EWLINK WB OFF RAMP - PLAN AND LONG SECTION - SHEET 1	2		2		
AEE-S-052	STRUCTURAL - SH1 NB TO EWLINK WB OFF RAMP - PLAN AND LONG SECTION - SHEET 2	2		2		
AEE-S-055	STRUCTURAL - SH1 NB TO EWLINK WB OFF RAMP - TYPICAL CROSS SECTION - SHEET 1	2		2		
AEE-S-056	STRUCTURAL - SH1 NB TO EWLINK WB OFF RAMP - TYPICAL CROSS SECTION - SHEET 2	2		2		
AEE-S-061	STRUCTURAL - PANAMA ROAD OVERBRIDGE - PLAN AND LONG SECTION	1		1		
AEE-S-062	STRUCTURAL - PANAMA ROAD OVERBRIDGE - TYPICAL CROSS SECTION	1		1		
AEE-S-065	STRUCTURAL - OTAHUHU CREEK - PLAN AND LONG SECTION	1		1		
AEE-S-066	STRUCTURAL - OTAHUHU CREEK - TYPICAL CROSS SECTION	1		1		
AEE-S-071	STRUCTURAL - PRINCES STREET OVERBRIDGE - PLAN AND LONG SECTION	1		1		
AEE-S-072	STRUCTURAL - PRINCES STREET OVERBRIDGE - TYPICAL CROSS SECTION	1		1		
AEE-S-081	STRUCTURAL - GREAT SOUTH ROAD RAIL OVERBRIDGE WIDENING - PLAN AND CROSS SECTION	1		1		
	PLAN SET 9 - STORMWATER					
AEE-SW-001	STORMWATER - EAST WEST LINK - DRAWING INDEX, NOTES AND LEGEND	4		3		4
AEE-SW-100	STORMWATER - EAST WEST LINK - OVERVIEW PLAN	4		3		4
AEE-SW-101	STORMWATER - SH20/NEILSON STREET INTERCHANGE - SHEET 1	3		2		3
AEE-SW-102	STORMWATER - NEILSON STREET INTERCHANGE - SHEET 2	3		2		3
AEE-SW-103	STORMWATER - GALWAY STREET - SHEET 3	3		2		3
AEE-SW-104	STORMWATER - EMBANKMENT - SHEET 4	3		2		3
AEE-SW-105	STORMWATER - EMBANKMENT - SHEET 5	3		2		3
AEE-SW-106	STORMWATER - EMBANKMENT/ANNS CREEK - SHEET 6	3		2		3
AEE-SW-107	STORMWATER - ANNS CREEK - SHEET 7	3		2		3
AEE-SW-108	STORMWATER - ANNS CREEK/SYLVA PARK ROAD - SHEET 8	4		3		4
AEE-SW-109	STORMWATER - ANNS CREEK/SYLVA PARK RAMPS - SHEET 9	4		3		4
AEE-SW-110	STORMWATER - SH1/SYLVA PARK RAMPS - SHEET 10	4		3		4
AEE-SW-111	STORMWATER - SH1/PANAMA ROAD - SHEET 11	3		2		3

EAST WEST LINK DRAWING REGISTER						
DWG NUMBER	DRAWING TITLE	CURRENT REVISION	DATE AND REVISION			
			23/05/2017	27/06/2017	3/07/2017	13/09/2017
AEE-SW-112	STORMWATER - SH1/OTAHUHU CREEK - SHEET 12	2		2		2
AEE-SW-113	STORMWATER - PRINCES STREET INTERCHANGE - SHEET 13	3		2		3
AEE-SW-114	STORMWATER - NEILSON STREET INTERCHANGE - LOCAL ROADS - SHEET 14A AND 14B	3		2		3
AEE-SW-115	STORMWATER - CAPTAIN SPRINGS ROAD/ PORTS LINK - SHEET 15A AND 15B	3		2		3
AEE-SW-116	STORMWATER - EMBANKMENT - SHEET 16	2		2		2
AEE-SW-301	STORMWATER - TYPICAL WETLAND - PLAN AND SECTION	3		2		3
AEE-SW-311	STORMWATER - EMBANKMENT WETLAND - TYPICAL CROSS SECTION	3		2		3
AEE-SW-312	STORMWATER - FORESHORE TREATMENT AREA - TYPICAL SECTION	3		2		3
	PLAN SET 10 - EROSION AND SEDIMENT CONTROL					
AEE-ES-001	EROSION AND SEDIMENT CONTROL - EAST WEST LINK - DRAWING INDEX, NOTES AND LEGEND	4	2	3		4
AEE-ES-100	EROSION AND SEDIMENT CONTROL - EAST WEST LINK - OVERVIEW PLAN	4	2	3		4
AEE-ES-101	EROSION AND SEDIMENT CONTROL - SH20/NEILSON STREET INTERCHANGE - SHEET 1	3	1	2		3
AEE-ES-102	EROSION AND SEDIMENT CONTROL - NEILSON STREET INTERCHANGE - SHEET 2	3	1	2		3
AEE-ES-103	EROSION AND SEDIMENT CONTROL - GALWAY STREET - SHEET 3	3	1	2		3
AEE-ES-104	EROSION AND SEDIMENT CONTROL - EMBANKMENT - SHEET 4	3	1	2		3
AEE-ES-105	EROSION AND SEDIMENT CONTROL - EMBANKMENT - SHEET 5	3	1	2		3
AEE-ES-106	EROSION AND SEDIMENT CONTROL - EMBANKMENT/ANNS CREEK - SHEET 6	3	1	2		3
AEE-ES-107	EROSION AND SEDIMENT CONTROL - ANNS CREEK - SHEET 7	4	2	3		4
AEE-ES-108	EROSION AND SEDIMENT CONTROL - ANNS CREEK/SYLVA PARK ROAD - SHEET 8	4	2	3		4
AEE-ES-109	EROSION AND SEDIMENT CONTROL - ANNS CREEK/SYLVA PARK RAMPS - SHEET 9	4	2	3		4
AEE-ES-110	EROSION AND SEDIMENT CONTROL - SH1/SYLVA PARK RAMPS - SHEET 10	3	1	2		3
AEE-ES-111	EROSION AND SEDIMENT CONTROL - SH1/PANAMA ROAD - SHEET 11	3	1	2		3
AEE-ES-112	EROSION AND SEDIMENT CONTROL - SH1/OTAHUHU CREEK - SHEET 12	2	1	2		2
AEE-ES-113	EROSION AND SEDIMENT CONTROL - PRINCES STREET INTERCHANGE - SHEET 13	3	1	2		3
AEE-ES-114	EROSION AND SEDIMENT CONTROL - NEILSON STREET INTERCHANGE - LOCAL ROADS - SHEET 14A AND 14B	3	1	2		3
AEE-ES-115	EROSION AND SEDIMENT CONTROL - CAPTAIN SPRINGS ROAD/ PORTS LINK - SHEET 15A AND 15B	3	1	2		3
AEE-ES-116	EROSION AND SEDIMENT CONTROL - EMBANKMENT - SHEET 16	2	1	2		2
AEE-ES-301	EROSION AND SEDIMENT CONTROL - TYPICAL DETAIL - SHEET 1	2	1	2		2
AEE-ES-302	EROSION AND SEDIMENT CONTROL - TYPICAL DETAIL - SHEET 2	2	1	2		2
AEE-ES-303	EROSION AND SEDIMENT CONTROL - TYPICAL DETAIL - SHEET 3	2	1	2		2
AEE-ES-304	EROSION AND SEDIMENT CONTROL - TYPICAL DETAIL - SHEET 4	2	1	2		2
AEE-ES-305	EROSION AND SEDIMENT CONTROL - TYPICAL DETAIL - SHEET 5	2	1	2		2

4	BOARD OF INQUIRY AMENDMENT	RT	NN*	JC*	22.09.2017
3	BOARD OF INQUIRY	RT	NN*	JC*	27.06.2017
2	ISSUED FOR CONFERENCING	TD	NN*	JC*	23.05.2017
1	ISSUED FOR CONSENT - GSR GRADE SEPARATION	AR	NN*	PK*	14.12.2016
No.	Issued Status	Drawn	Checked	App'd	Date

**DISCLAIMER**  
This drawing is for the purpose of supporting applications under the RMA for resource consents and designations. All information shown is subject to final design. Areas and measurements are subject to survey. Where the designs conflict with conditions the conditions will prevail. This Drawing **must not** be used for construction



Drawn	A RAM	Drafting Check	J MURAHIDY	Reviewed	Design Manager	Approved	Alliance Manager
Designed	A RAM	Design Check	J MURAHIDY		N NANCEKIVELL		J CALDWELL
Scale:	Original Scale (A1)	Reduced Scale (A3)	AS SHOWN	Contract No	PA4014		

Drawing Title	EAST WEST LINK DRAWING REGISTER SHEET 04 OF 05	Rev No.	4
Drawing Number	AEE-G-014		

**FOR BOI ISSUE**

EAST WEST LINK DRAWING REGISTER						
DWG NUMBER	DRAWING TITLE	CURRENT REVISION	DATE AND REVISION			
			23/05/2017	27/06/2017	3/07/2017	13/09/2017
	PLAN SET 11 - CONSTRUCTION ACTIVITIES					
AEE-CA-001	CONSTRUCTION ACTIVITIES - EAST WEST LINK - DRAWING INDEX, NOTES AND LEGEND	3		2		3
AEE-CA-100	CONSTRUCTION ACTIVITIES - EAST WEST LINK - OVERVIEW PLAN	2		2		2
AEE-CA-101	CONSTRUCTION ACTIVITIES - SH20/NEILSON STREET INTERCHANGE - SHEET 1	2		1		2
AEE-CA-102	CONSTRUCTION ACTIVITIES - NEILSON STREET INTERCHANGE - SHEET 2	2		1		2
AEE-CA-103	CONSTRUCTION ACTIVITIES - EAST WEST LINK/GALWAY STREET - SHEET 3	2		1		2
AEE-CA-104	CONSTRUCTION ACTIVITIES - EMBANKMENT - SHEET 4	2		1		2
AEE-CA-105	CONSTRUCTION ACTIVITIES - EMBANKMENT - SHEET 5	2		1		2
AEE-CA-106	CONSTRUCTION ACTIVITIES - EMBANKMENT/ANNS CREEK - SHEET 6	2		1		2
AEE-CA-107	CONSTRUCTION ACTIVITIES - ANNS CREEK - SHEET 7	3		2		3
AEE-CA-108	CONSTRUCTION ACTIVITIES - ANNS CREEK/SYLVA PARK ROAD - SHEET 8	3		2		3
AEE-CA-109	CONSTRUCTION ACTIVITIES - ANNS CREEK/SYLVA PARK RAMPS - SHEET 9	3		2		3
AEE-CA-110	CONSTRUCTION ACTIVITIES - SH1/SYLVA PARK RAMPS - SHEET 10	2		1		2
AEE-CA-111	CONSTRUCTION ACTIVITIES - SH1/PANAMA ROAD - SHEET 11	2		1		2
AEE-CA-112	CONSTRUCTION ACTIVITIES - SH1/OTAHUHU CREEK - SHEET 12	1		1		1
AEE-CA-113	CONSTRUCTION ACTIVITIES - PRINCES STREET INTERCHANGE - SHEET 13	2		1		2
AEE-CA-114	CONSTRUCTION ACTIVITIES - NEILSON STREET INTERCHANGE - LOCAL ROADS - SHEET 14A AND 14B	2		1		2
AEE-CA-115	CONSTRUCTION ACTIVITIES - CAPTAIN SPRINGS ROAD/ PORTS LINK - SHEET 15A AND 15B	2		1		2
AEE-CA-116	CONSTRUCTION ACTIVITIES - EMBANKMENT - SHEET 16	1		1		1
AEE-CA-201	CONSTRUCTION ACTIVITIES - SH1/PANAMA ROAD - BRIDGE STAGING PLAN	1		1		1
AEE-CA-202	CONSTRUCTION ACTIVITIES - SH1/OTAHUHU CREEK - BRIDGE STAGING PLAN	1		1		1
AEE-CA-203	CONSTRUCTION ACTIVITIES - PRINCES STREET INTERCHANGE - BRIDGE STAGING PLAN	1		1		1
	PLAN SET 12 - UTILITIES RELOCATION					
AEE-U-001	UTILITIES RELOCATION - EAST WEST LINK - DRAWING INDEX, NOTES AND LEGEND	3		2		3
AEE-U-100	UTILITIES RELOCATION - EAST WEST LINK - OVERVIEW PLAN	3		2		3
AEE-U-101	UTILITIES RELOCATION - SH20/NEILSON STREET INTERCHANGE - SHEET 1	2		1		2
AEE-U-102	UTILITIES RELOCATION - NEILSON STREET INTERCHANGE - SHEET 2	2		1		2
AEE-U-103	UTILITIES RELOCATION/ GALWAY STREET - SHEET 3	2		1		2
AEE-U-104	UTILITIES RELOCATION - EMBANKMENT - SHEET 4	2		1		2
AEE-U-105	UTILITIES RELOCATION - EMBANKMENT - SHEET 5	2		1		2
AEE-U-106	UTILITIES RELOCATION - EMBANKMENT/ANNS CREEK - SHEET 6	2		1		2
AEE-U-107	UTILITIES RELOCATION - ANNS CREEK - SHEET 7	3		2		3
AEE-U-108	UTILITIES RELOCATION - ANNS CREEK/SYLVA PARK ROAD - SHEET 8	3		2		3
AEE-U-109	UTILITIES RELOCATION - ANNS CREEK/SYLVA PARK RAMPS - SHEET 9	3		2		3

EAST WEST LINK DRAWING REGISTER						
DWG NUMBER	DRAWING TITLE	CURRENT REVISION	DATE AND REVISION			
			23/05/2017	27/06/2017	3/07/2017	13/09/2017
AEE-U-110	UTILITIES RELOCATION - SH1/SYLVA PARK RAMPS - SHEET 10	2		1		2
AEE-U-111	UTILITIES RELOCATION - SH1/PANAMA ROAD - SHEET 11	2		1		2
AEE-U-112	UTILITIES RELOCATION - SH1/OTAHUHU CREEK - SHEET 12	1		1		1
AEE-U-113	UTILITIES RELOCATION - PRINCES STREET INTERCHANGE - SHEET 13	2		1		2
AEE-U-114	UTILITIES RELOCATION - NEILSON STREET INTERCHANGE - LOCAL ROADS - SHEET 14A AND 14B	2		1		2
AEE-U-115	UTILITIES RELOCATION - CAPTAIN SPRINGS ROAD/ PORTS LINK - SHEET 15A AND 15B	2		1		2
AEE-U-116	UTILITIES RELOCATION - EMBANKMENT - SHEET 16	1		1		1

FOR BOI ISSUE

4	BOARD OF INQUIRY AMENDMENT	RT	NN*	JC*	22.09.2017
3	BOARD OF INQUIRY	RT	NN*	JC*	27.06.2017
2	ISSUED FOR CONFERENCING	TD	NN*	JC*	23.05.2017
1	ISSUED FOR CONSENT - GSR GRADE SEPARATION	AR	NN*	PK*	14.12.2016
No.	Issued Status	Drawn	Check'd	App'd	Date

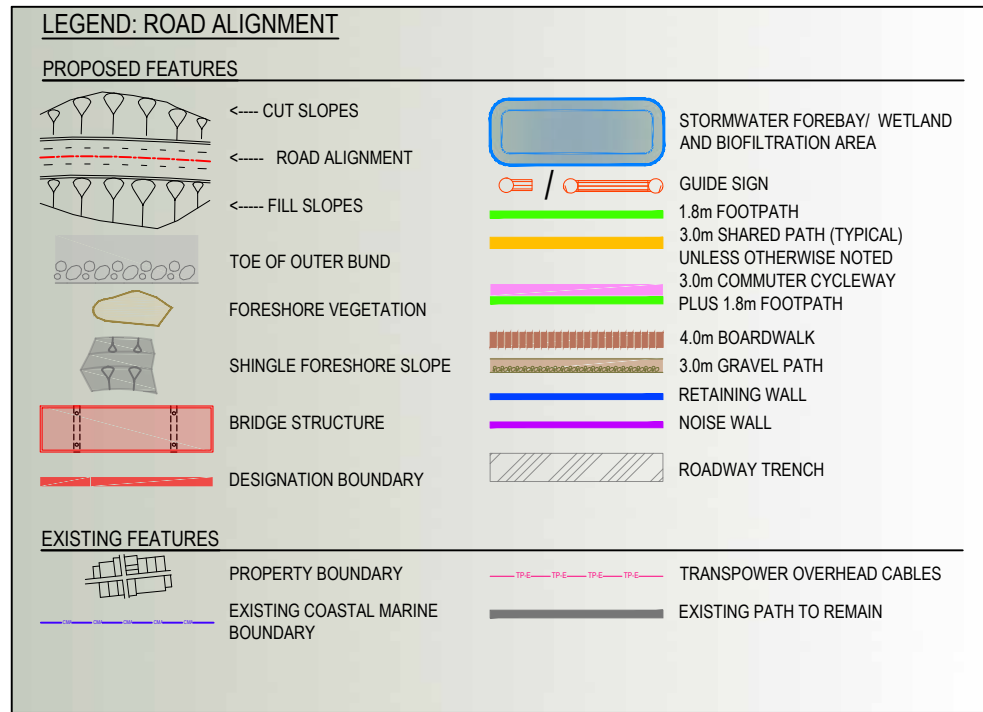
**DISCLAIMER**  
This drawing is for the purpose of supporting applications under the RMA for resource consents and designations. All information shown is subject to final design. Areas and measurements are subject to survey. Where the designs conflict with conditions the conditions will prevail. This Drawing **must not** be used for construction



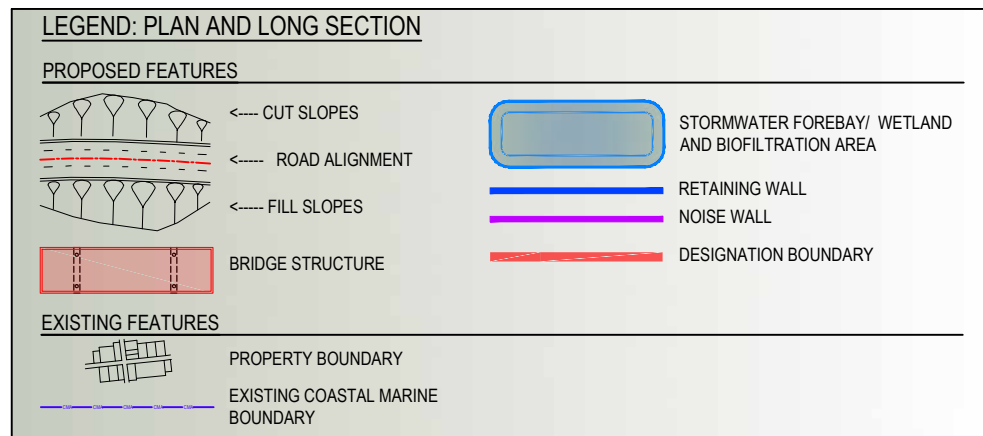
Drawn	A RAM	Drafting Check	J MURAHIDY	Reviewed	Design Manager	Approved	Alliance Manager
Designed	A RAM	Design Check	J MURAHIDY		N NANCEKIVELL		J CALDWELL
Scale:	Original Scale (A1)	Reduced Scale (A3)	AS SHOWN	Contract No	PA4014		

Drawing Title	EAST WEST LINK DRAWING REGISTER SHEET 05 OF 05		
Drawing Number	AEE-G-015	Rev No.	4

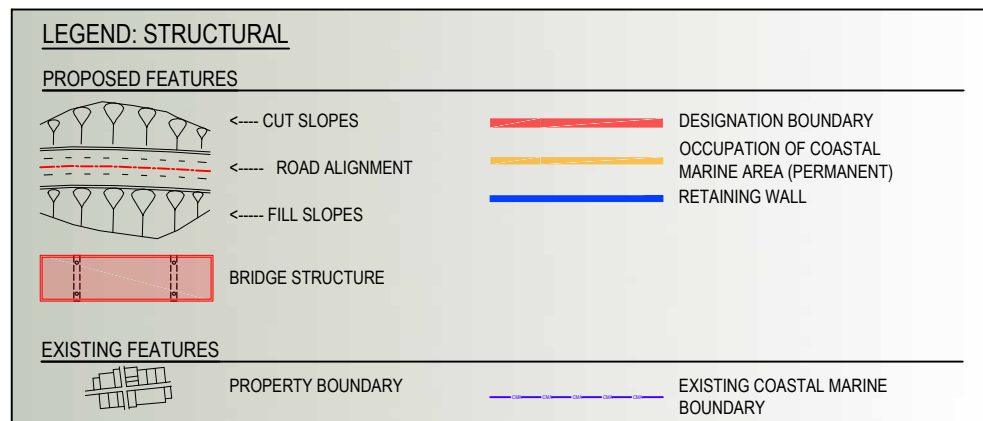




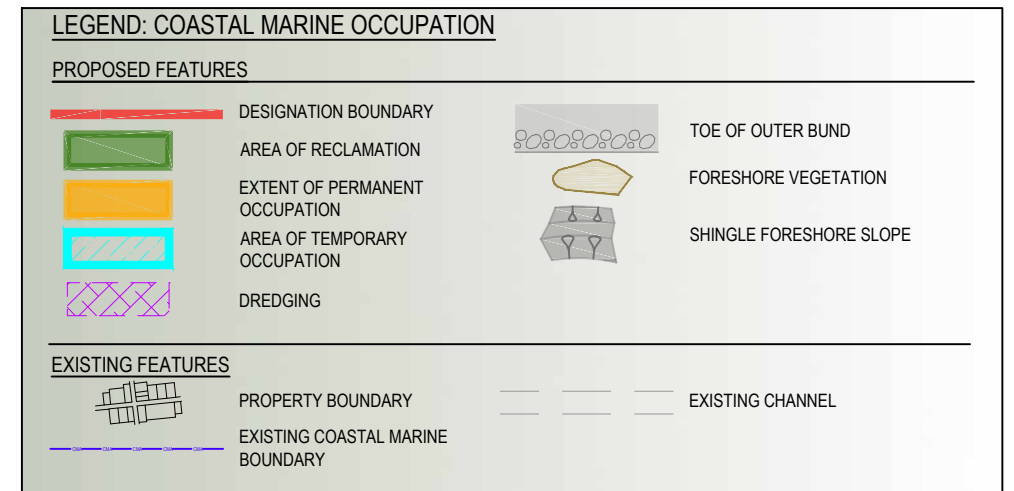
ALIGNMENT PLANS, REFER DRAWINGS AEE-G-101 TO AEE-G-106 & AEE-AL-101 TO AEE-AL-116



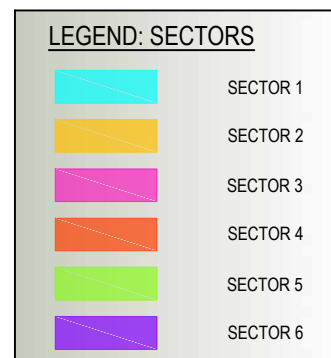
PLAN AND LONG SECTIONS, REFER DRAWINGS AEE-C-200 SERIES



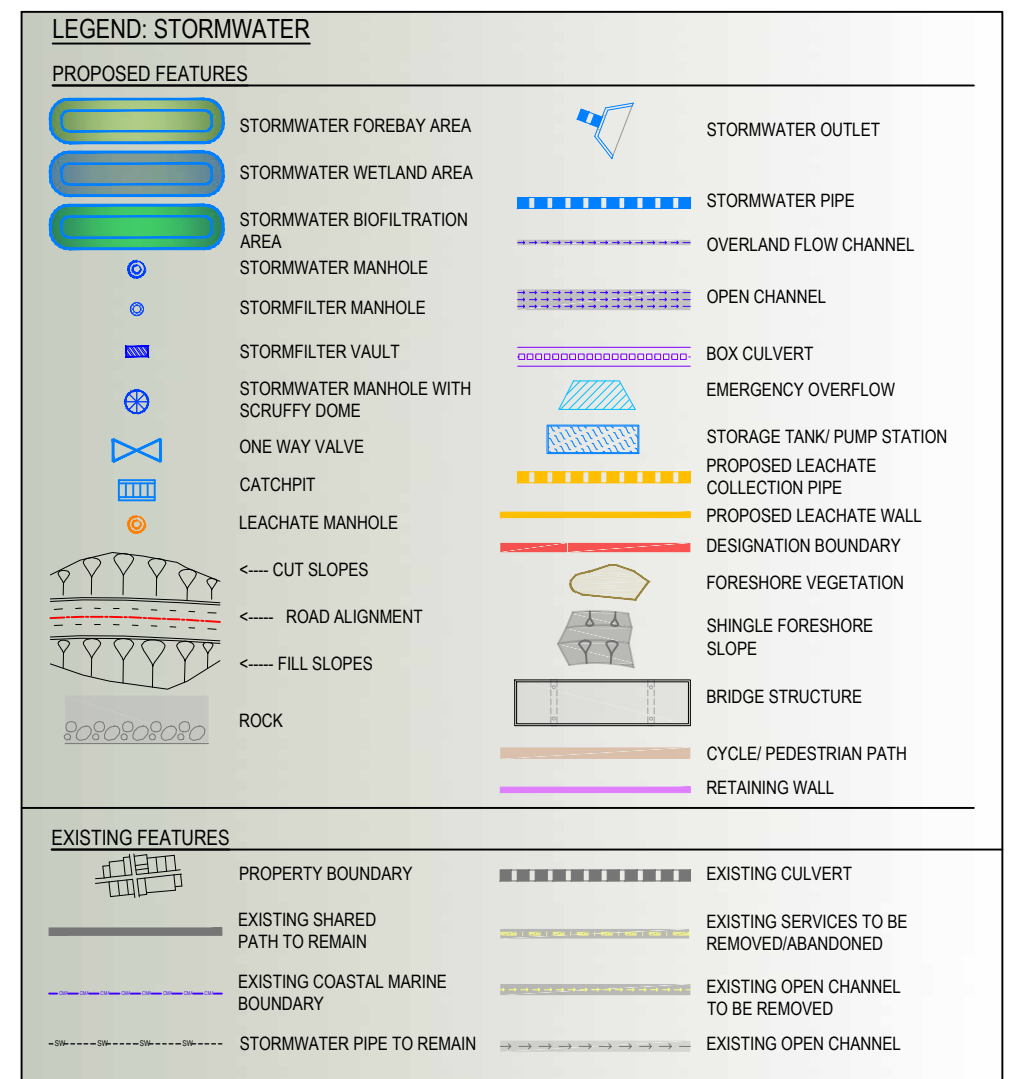
STRUCTURAL PLANS, REFER DRAWINGS AEE-S-010 TO AEE-S-081



COASTAL OCCUPATION PLANS, REFER DRAWINGS AEE-CMA-101 TO AEE-CMA-104 AND AEE-CMA-111



SECTOR PLANS, REFER DRAWINGS AEE-G-131



STORMWATER PLANS, REFER DRAWINGS AEE-SW-101 TO AEE-SW-116

No.	Issued Status	Drawn	Check'd	App'd	Date
2	BOARD OF INQUIRY	RT	NN	JC	27.06.17
1	ISSUED FOR CONSENT - GSR GRADE SEPARATION	AR	NN*	PK*	14.12.2016
0	ISSUED FOR CONSENT	AR	NN*	PK*	01.12.2016

**DISCLAIMER**  
 This drawing is for the purpose of supporting applications under the RMA for resource consents and designations. All information shown is subject to final design. Areas and measurements are subject to survey. Where the designs conflict with conditions the conditions will prevail. This Drawing **must not** be used for construction

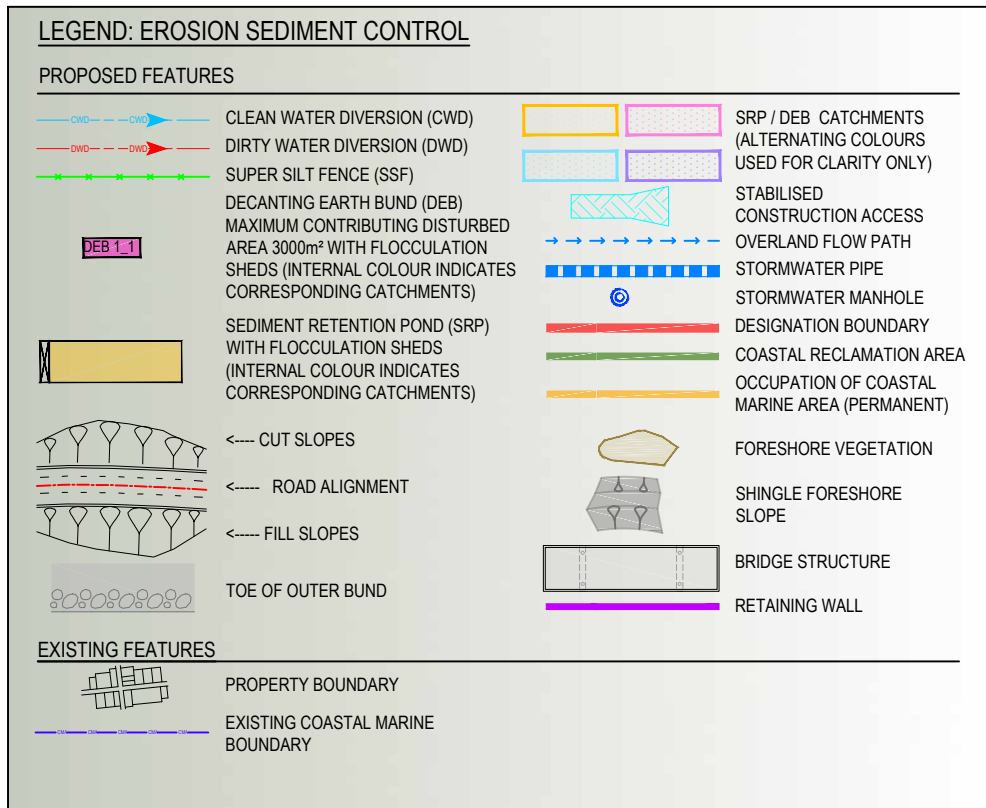


**East West Link**

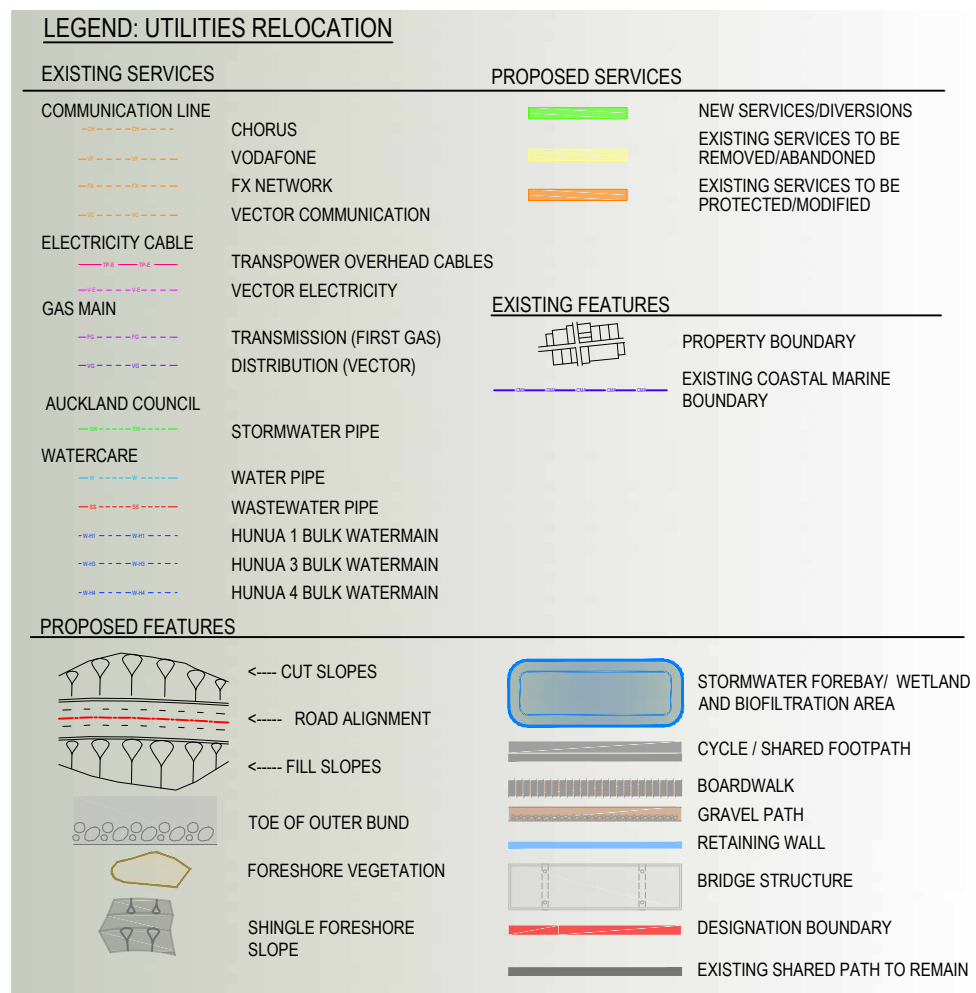
Drawn A RAM	Drafting Check J MURAHIDY	Reviewed Design Manager N NANCEKIVELL	Approved Alliance Manager J CALDWELL
Designed A RAM	Design Check J MURAHIDY	Contract No <b>PA4014</b>	
Scale: Original Scale (A1)	Reduced Scale (A3)	AS SHOWN	

Drawing Title <b>EAST WEST LINK OVERALL LEGEND SHEET 01 OF 02</b>	Drawing Number <b>AEE-G-021</b>	Rev No. <b>2</b>
--	------------------------------------	---------------------

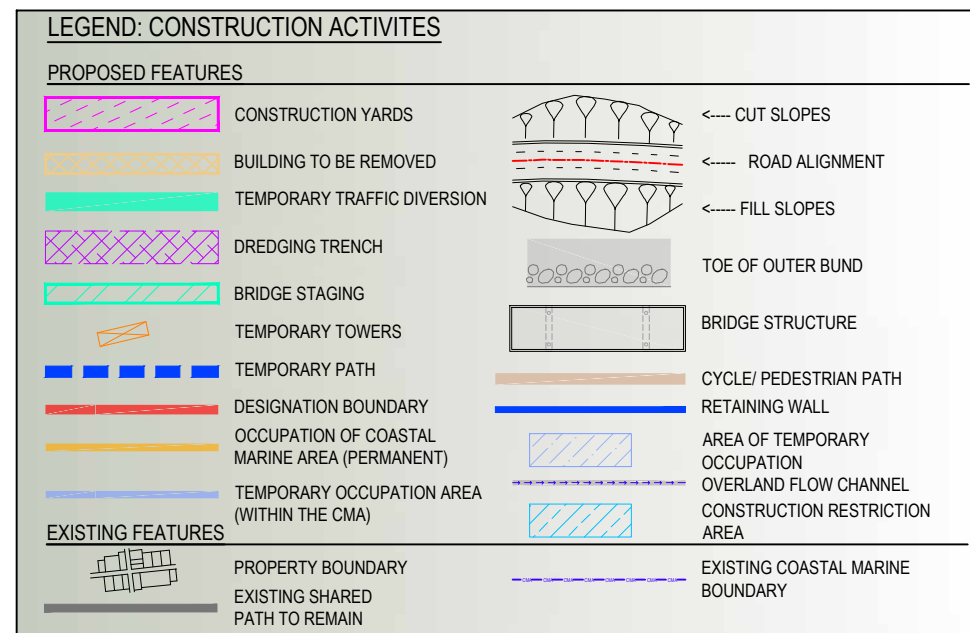
**FOR BOI ISSUE**



EROSION SEDIMENT CONTROL PLANS, REFER DRAWINGS AEE-ES-100 TO AEE-ES-116



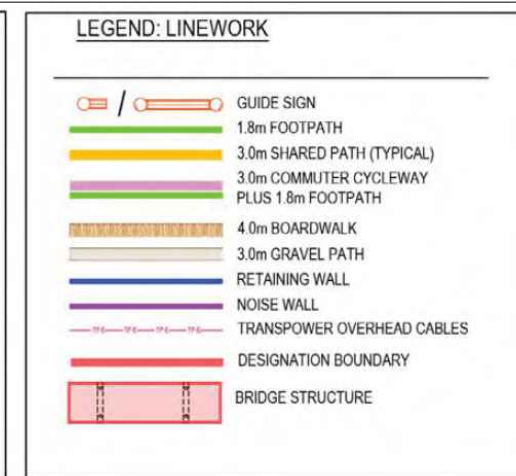
UTILITIES RELOCATION PLANS, REFER DRAWINGS AEE-U-100 TO AEE-U-116



CONSTRUCTION ACTIVITIES PLANS, REFER DRAWINGS AEE-CA-100 TO AEE-CA-116



LANDSCAPE PLANS, REFER DRAWINGS AEE-LA-100 TO AEE-LA-116



No.	Issued Status	Drawn	Check'd	App'd	Date
3	BOARD OF INQUIRY AMENDMENT	RT	NN*	JC*	22.09.2017
2	BOARD OF INQUIRY	RT	NN*	JC*	27.06.2017
1	ISSUED FOR CONSENT - GSR GRADE SEPARATION	AR	NN*	PK*	14.12.2016
0	ISSUED FOR CONSENT	AR	NN*	PK*	01.12.2016

**DISCLAIMER**  
This drawing is for the purpose of supporting applications under the RMA for resource consents and designations. All information shown is subject to final design. Areas and measurements are subject to survey. Where the designs conflict with conditions the conditions will prevail. This Drawing **must not** be used for construction

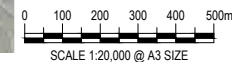


Drawn	A RAM	Drafting Check	J MURAHIDY	Reviewed Design Manager	N NANCEKIVELL	Approved Alliance Manager	J CALDWELL
Designed	A RAM	Design Check	J MURAHIDY				
Scale:	Original Scale (A1)	Reduced Scale (A3)	AS SHOWN	Contract No	PA4014		

Drawing Title	EAST WEST LINK OVERALL LEGEND SHEET 02 OF 02		
Drawing Number	AEE-G-022		
Rev No.	3		

FOR BOI ISSUE





**FOR BOI ISSUE**

3	BOARD OF INQUIRY	RT	NN	JC	27.06.2017
2	ISSUED FOR CONFERENCING	TD	NN	JC	23.05.2017
1	ISSUED FOR CONSENT - GSR GRADE SEPARATION	AR	NN*	PK*	14.12.2016
0	ISSUED FOR CONSENT	AR	NN*	PK*	01.12.2016
No.	Issued Status	Drawn	Check'd	App'd	Date

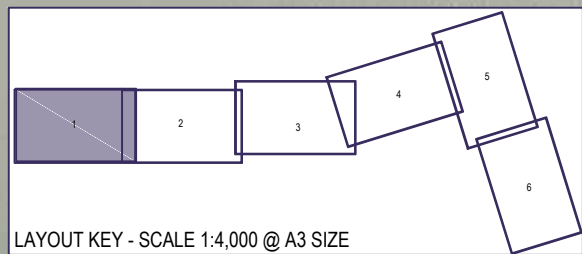
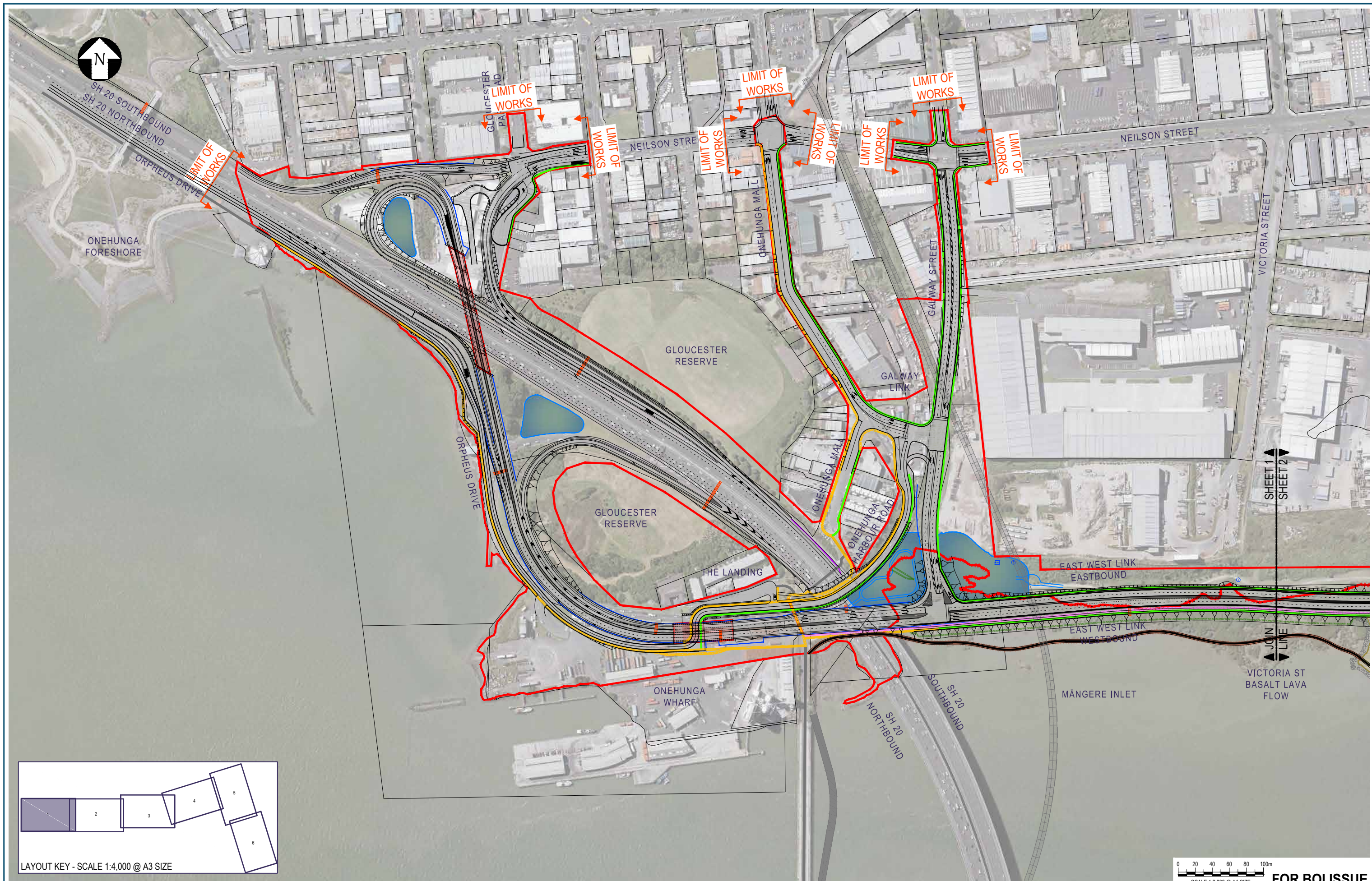
**DISCLAIMER**  
 This drawing is for the purpose of supporting applications under the RMA for resource consents and designations. All information shown is subject to final design. Areas and measurements are subject to survey. Where the designs conflict with conditions the conditions will prevail. This Drawing **must not** be used for construction



Drawn	A RAM	Drafting Check	J MURAHIDY	Reviewed Design Manager	N NANCEKIVELL	Approved Alliance Manager	J CALDWELL
Designed	RT/LN/RB	Design Check	J MURAHIDY				
Scale:	Original Scale (A1)	Reduced Scale (A3)	AS SHOWN	Contract No		PA4014	

Drawing Title	EAST WEST LINK OVERVIEW PLAN SHEET LAYOUT		
Drawing Number	AEE-G-100		
Rev No.	3		





3	BOARD OF INQUIRY AMENDMENT	RT	NN	JC	22.09.2017
2	BOARD OF INQUIRY	RT	NN	JC	27.06.2017
1	ISSUED FOR CONFERENCING	TD	NN	JC	23.05.2017
0	ISSUED FOR CONSENT	AR	NN*	PK*	01.12.2016
No.	Issued Status	Drawn	Check'd	App'd	Date

**DISCLAIMER**  
 This drawing is for the purpose of supporting applications under the RMA for resource consents and designations. All information shown is subject to final design. Areas and measurements are subject to survey. Where the designs conflict with conditions the conditions will prevail. This Drawing **must not** be used for construction

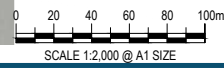
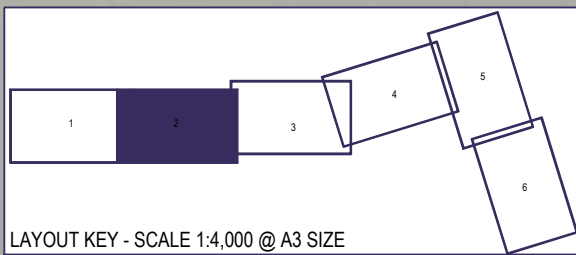


**East West Link**

Drawn	A RAM	Drafting Check	J MURAHIDY	Reviewed	N NANCEKIVELL	Approved	J CALDWELL
Designed	R TAN	Design Check	J MURAHIDY	AS SHOWN		Contract No	PA4014
Scale:	Original Scale (A1)	Reduced Scale (A3)					

Drawing Title	GENERAL ARRANGEMENT EAST WEST LINK NEILSON ST INTERCHANGE - SHEET 01	
Drawing Number	AEE-G-101	Rev No.
		3





**FOR BOI ISSUE**

No.	Issued Status	Drawn	Check'd	App'd	Date
3	BOARD OF INQUIRY AMENDMENT	RT	NN	JC	22.09.2017
2	BOARD OF INQUIRY	RT	NN	JC	27.06.2017
1	ISSUED FOR CONFERENCING	TD	NN	JC	23.05.2017
0	ISSUED FOR CONSENT	AR	NN*	PK*	01.12.2016

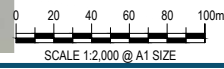
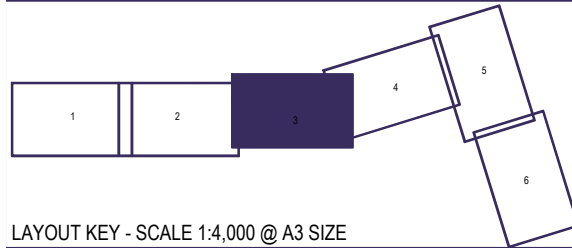
**DISCLAIMER**  
 This drawing is for the purpose of supporting applications under the RMA for resource consents and designations. All information shown is subject to final design. Areas and measurements are subject to survey. Where the designs conflict with conditions the conditions will prevail. This Drawing **must not** be used for construction



Drawn A RAM	Drafting Check J MURAHIDY	Reviewed Design Manager N NANCEKIVELL	Approved Alliance Manager J CALDWELL
Designed R BAILEY	Design Check J MURAHIDY	Contract No <b>PA4014</b>	
Scale: Original Scale (A1)	Reduced Scale (A3)	AS SHOWN	

Drawing Title <b>GENERAL ARRANGEMENT EAST WEST LINK EMBANKMENT - SHEET 02</b>	Rev No. 3
Drawing Number <b>AEE-G-102</b>	





**FOR BOI ISSUE**

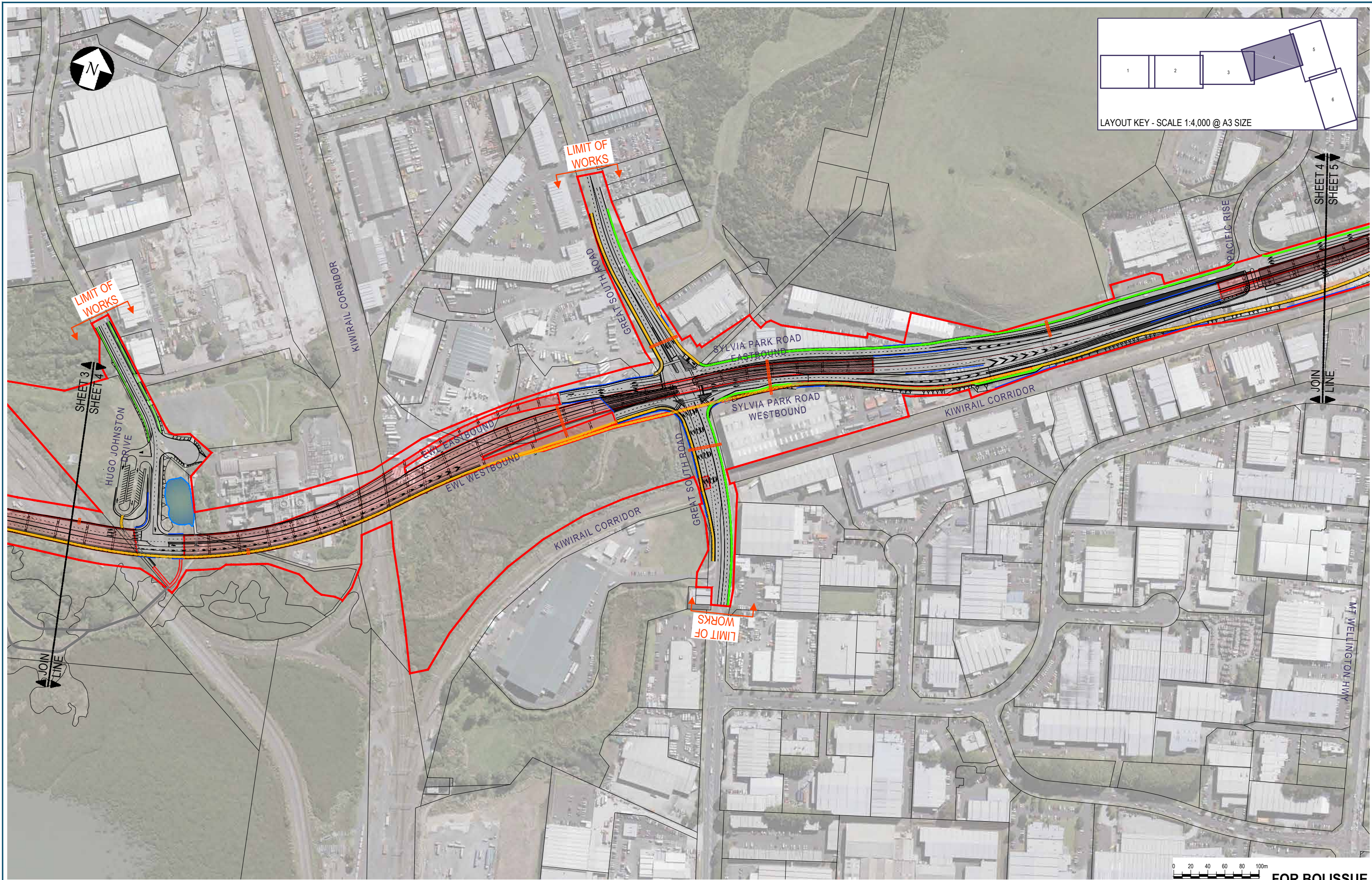
3	BOARD OF INQUIRY AMENDMENT	RT	NN	JC	22.09.2017
2	BOARD OF INQUIRY	RT	NN	JC	27.06.2017
1	ISSUED FOR CONFERENCING	TD	NN	JC	23.05.2017
0	ISSUED FOR CONSENT	AR	NN*	PK*	01.12.2016
No.	Issued Status	Drawn	Check'd	App'd	Date

**DISCLAIMER**  
 This drawing is for the purpose of supporting applications under the RMA for resource consents and designations. All information shown is subject to final design. Areas and measurements are subject to survey. Where the designs conflict with conditions the conditions will prevail. This Drawing **must not** be used for construction

Drawn	A RAM	Drafting Check	J MURAHIDY	Reviewed Design Manager	N NANCEKIVELL	Approved Alliance Manager	J CALDWELL
Designed	R B/L NEL	Design Check	J MURAHIDY	Contract No PA4014			
Scale:	Original Scale (A1)	Reduced Scale (A3)	AS SHOWN				

Drawing Title	GENERAL ARRANGEMENT EAST WEST LINK EMBANKMENT/ ANNS CREEK - SHEET 03	
Drawing Number	AEE-G-103	Rev No. 3





4	BOARD OF INQUIRY AMENDMENT	RT	NN	JC	22.09.2017
3	BOARD OF INQUIRY	RT	NN	JC	27.06.2017
2	ISSUED FOR CONFERENCING	TD	NN*	JC*	23.05.2017
1	ISSUED FOR CONSENT - GSR GRADE SEPARATION	AR	NN*	PK*	14.12.2018
No.	Issued Status	Drawn	Check'd	App'd	Date

**DISCLAIMER**  
 This drawing is for the purpose of supporting applications under the RMA for resource consents and designations. All information shown is subject to final design. Areas and measurements are subject to survey. Where the designs conflict with conditions the conditions will prevail. This Drawing **must not** be used for construction



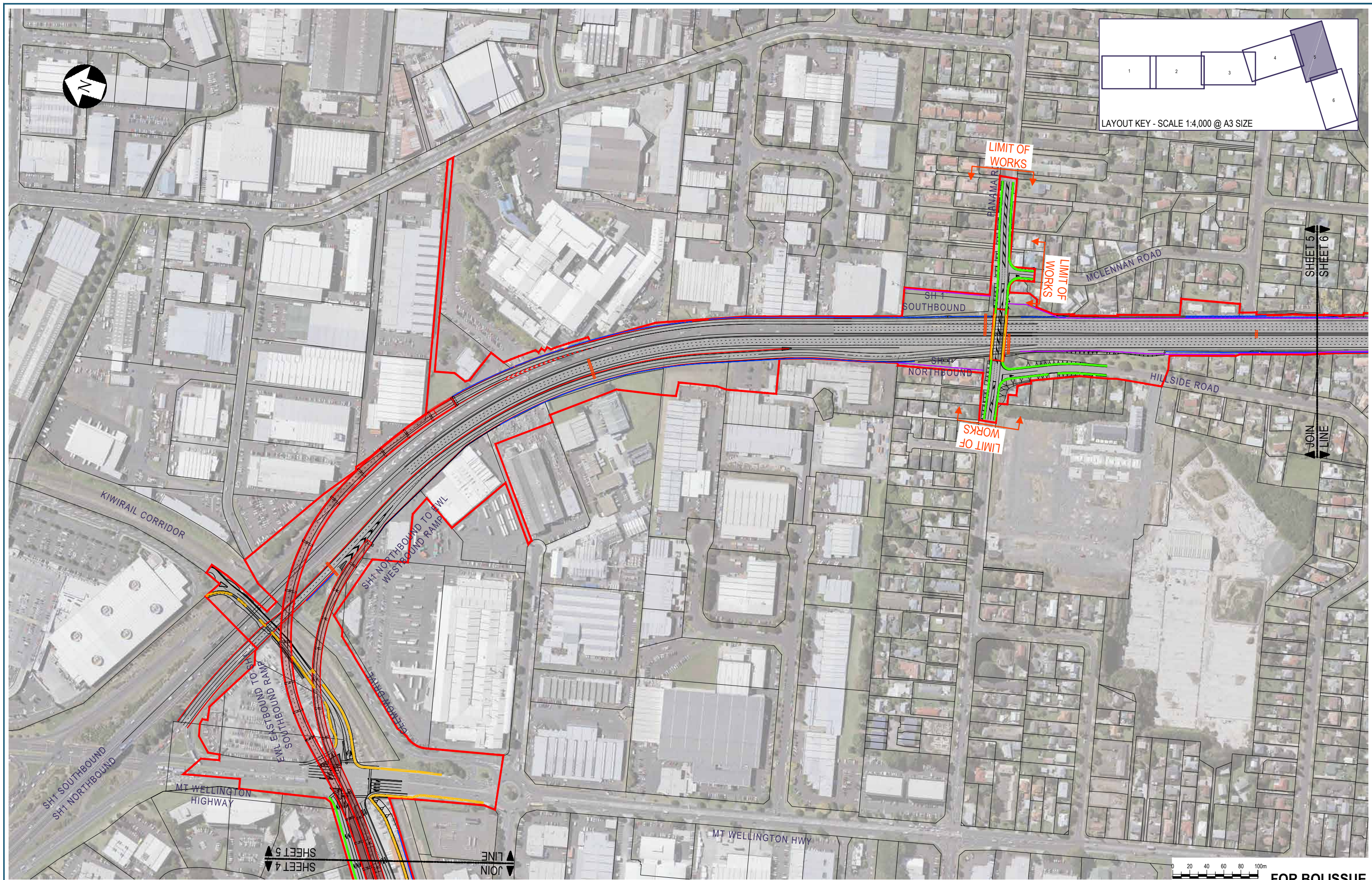
## East West Link

Drawn	A RAM	Drafting Check	J MURAHIDY	Reviewed	N NANCEKIVELL	Approved	J CALDWELL
Designed	L NEL	Design Check	J MURAHIDY				
Scale:	Original Scale (A1)	Reduced Scale (A3)	AS SHOWN	Contract No		PA4014	

Drawing Title	GENERAL ARRANGEMENT EAST WEST LINK ANNS CREEK/ SYLVIA PARK ROAD - SHEET 04		
Drawing Number	AEE-G-104	Rev No.	4

**FOR BOI ISSUE**





3	BOARD OF INQUIRY AMENDMENT	RT	NN	JC	22.09.2017
2	BOARD OF INQUIRY	RT	NN	JC	27.06.2017
1	ISSUED FOR CONFERENCING	TD	NN	JC	23.05.2017
0	ISSUED FOR CONSENT	AR	NN*	PK*	01.12.2016
No.	Issued Status	Drawn	Check'd	App'd	Date

**DISCLAIMER**  
 This drawing is for the purpose of supporting applications under the RMA for resource consents and designations. All information shown is subject to final design. Areas and measurements are subject to survey. Where the designs conflict with conditions the conditions will prevail. This Drawing **must not** be used for construction

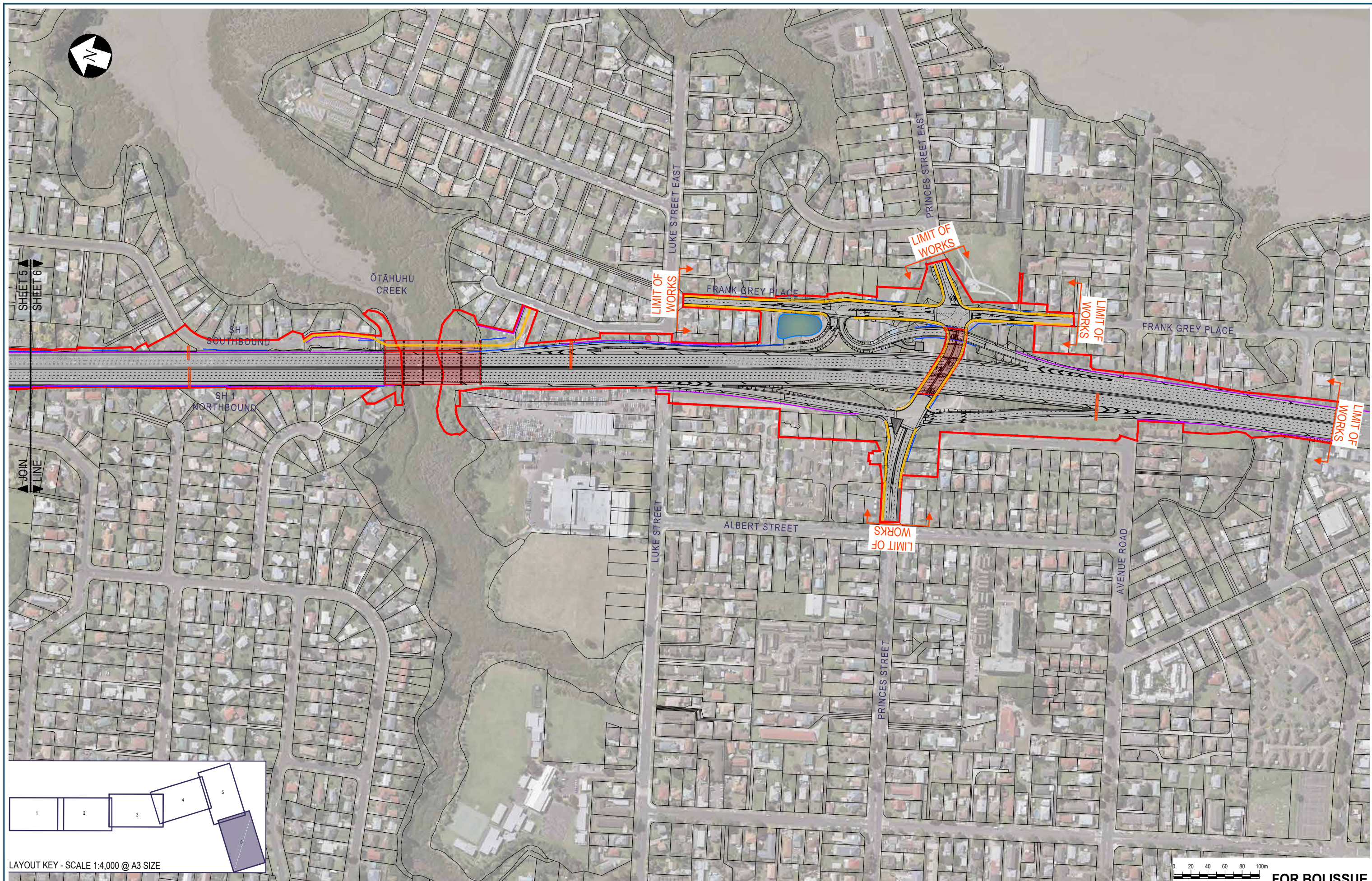


**East West Link**

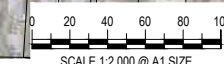
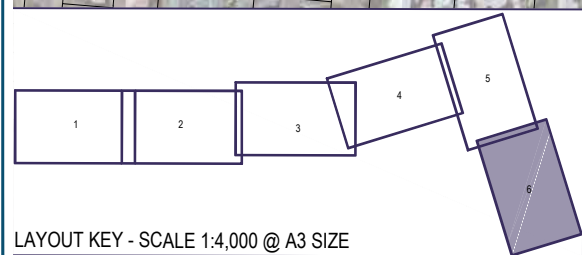
Drawn	A RAM	Drafting Check	J MURAHIDY	Reviewed	N NANCEKIVELL	Approved	J CALDWELL
Designed	L NEL	Design Check	J MURAHIDY	Design Manager	N NANCEKIVELL	Alliance Manager	J CALDWELL
Scale:	Original Scale (A1)	Reduced Scale (A3)	AS SHOWN	Contract No	PA4014		

Drawing Title	GENERAL ARRANGEMENT EAST WEST LINK SH1/ SYLVIA PARK RAMPS - SHEET 05		
Drawing Number	AEE-G-105	Rev No.	3





LAYOUT KEY - SCALE 1:4,000 @ A3 SIZE



**FOR BOI ISSUE**

3	BOARD OF INQUIRY AMENDMENT	RT	NN	JC	22.09.2017
2	BOARD OF INQUIRY	RT	NN	JC	27.06.2017
1	ISSUED FOR CONFERENCING	TD	NN	JC	23.05.2017
0	ISSUED FOR CONSENT	AR	NN*	PK*	01.12.2016
No.	Issued Status	Drawn	Check'd	App'd	Date

**DISCLAIMER**  
 This drawing is for the purpose of supporting applications under the RMA for resource consents and designations. All information shown is subject to final design. Areas and measurements are subject to survey. Where the designs conflict with conditions the conditions will prevail. This Drawing **must not** be used for construction



**East West Link**

Drawn	A RAM	Drafting Check	J MURAHIDY	Reviewed Design Manager	N NANCEKIVELL	Approved Alliance Manager	J CALDWELL
Designed	R TAN	Design Check	J MURAHIDY				
Scale:	Original Scale (A1)	Reduced Scale (A3)	AS SHOWN	Contract No		PA4014	

Drawing Title	GENERAL ARRANGEMENT EAST WEST LINK SH1/ PRINCES ST INTERCHANGE - SHEET 06		
Drawing Number	AEE-G-106		
Rev No.	3		