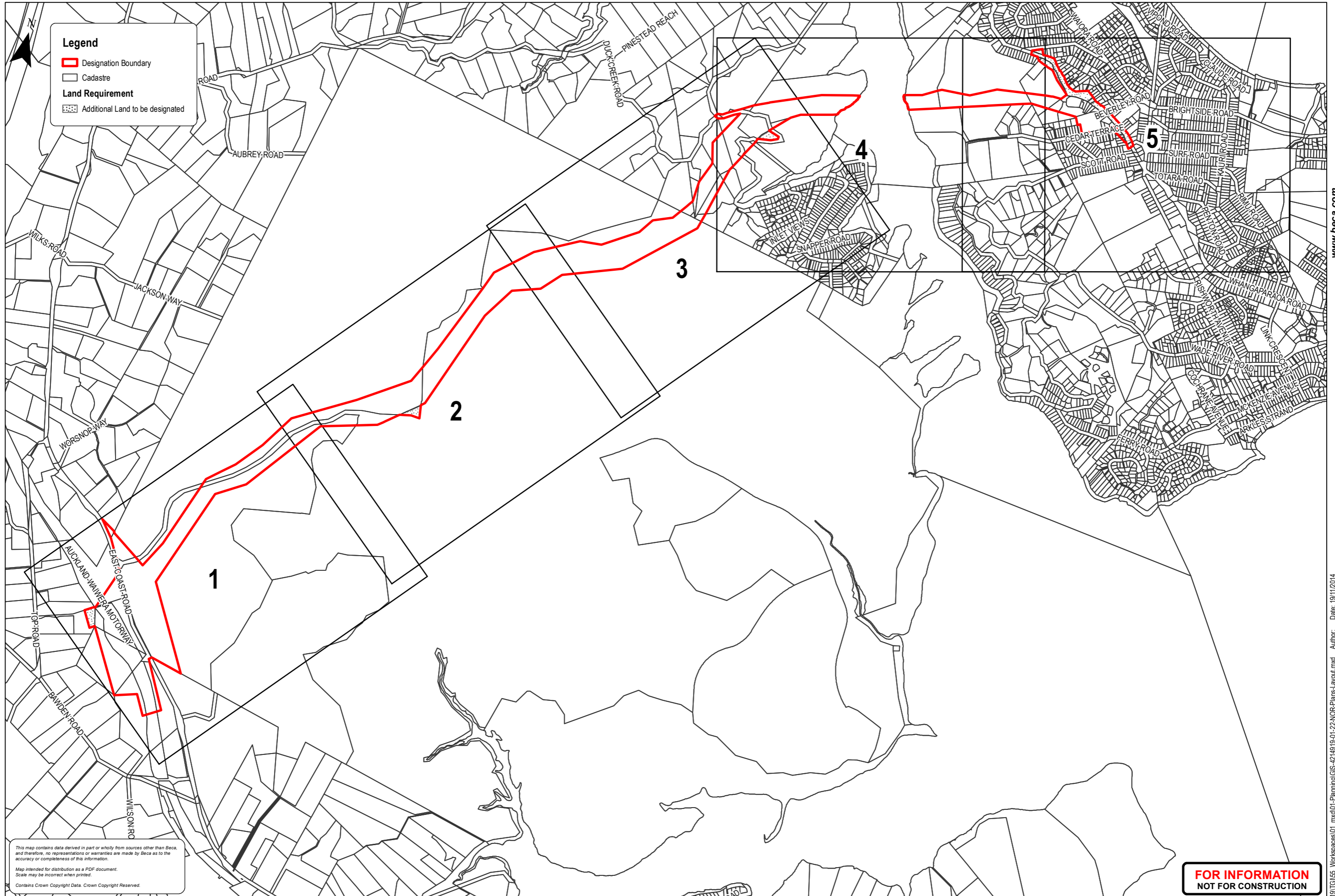


O Mahurangi - Penlink Designation Boundaries: confirmed in 2001 (Rodney District Council) and 2015 (Auckland Transport)

Drawing Plotted: 19/11/2014



www.beca.com

File: P:\42142149\01\GIS\55_Workspaces\01_Planning\GIS-4214919-01-22-NOR-Plans-Layout.mxd Author: Date: 19/11/2014

This map contains data derived in part or wholly from sources other than Beca, and therefore, no representations or warranties are made by Beca as to the accuracy or completeness of this information.
Map intended for distribution as a PDF document.
Scale may be incorrect when printed.
Contains Crown Copyright Data. Crown Copyright Reserved.

**FOR INFORMATION
NOT FOR CONSTRUCTION**

No.	Revision	By	Chk	Appd	Date
B	Rev B - Issued for Consent	BAP	BTM		16/11/14
A	Rev 1 - Issued for AT review	BAP	BTM		10/11/14

Drawing Originator:

Original Scale (A3)	Design Drawn	N/A	Approved for Issue *
1:20,000 @ A3	BAP	16/11/14	-
AS SHOWN	Dwg Verifier	N/A	-
	Dwg Check	BTM	16/11/14

* Refer to Revision 1 for Original Signature

An Auckland Council Organisation

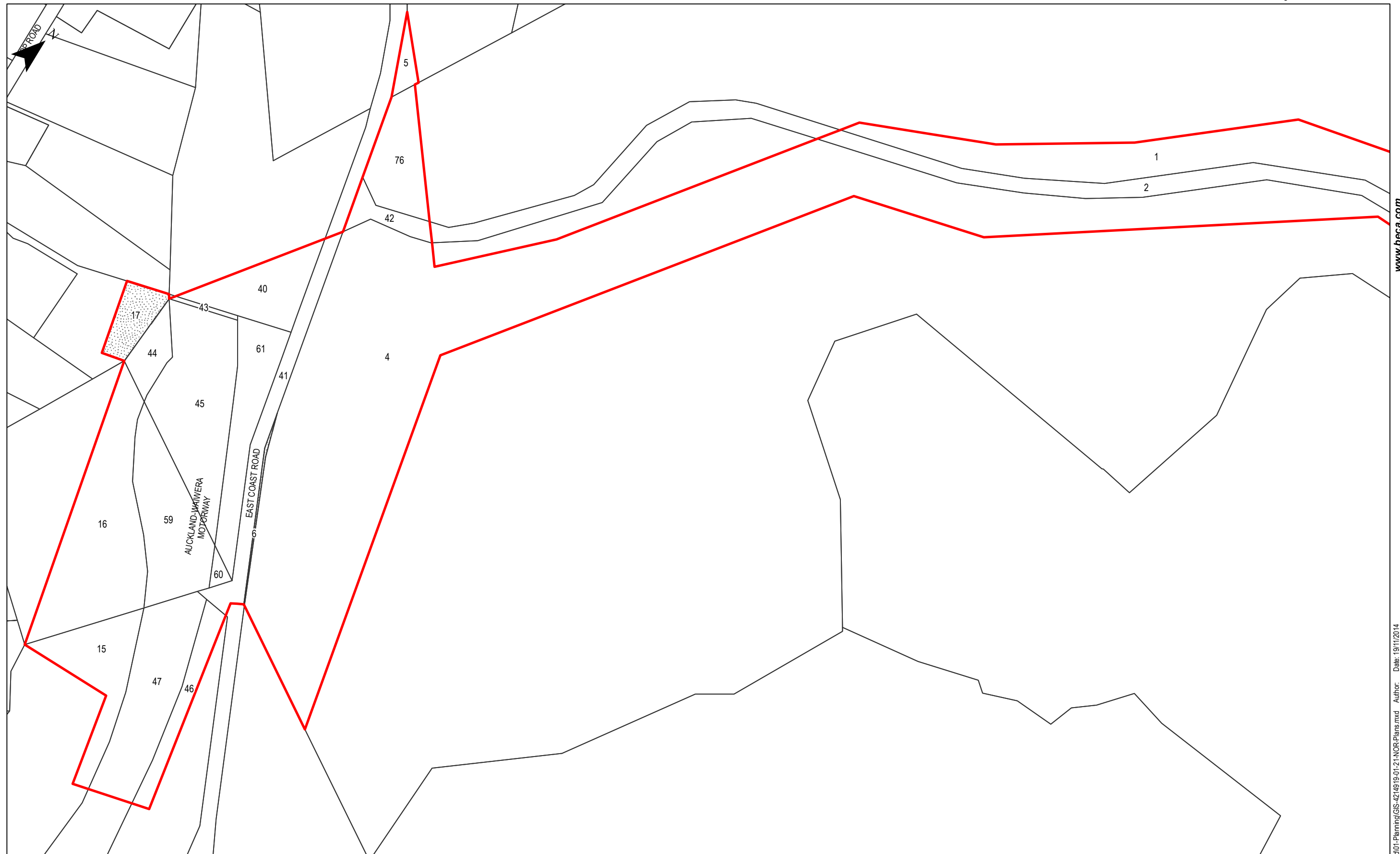
Client: PENLINK - ALTERATIONS & RECONSENTING

Project: LAND REQUIREMENT PLANS LAYOUT

Discipline	GIS
Drawing No.	GIS-4214919-01-NOR-22
Rev.	B

O Mahurangi - Penlink Designation Boundaries: confirmed in 2001 (Rodney District Council) and 2015 (Auckland Transport)

Drawing Plotted: 19/11/2014



www.beca.com

This map contains data derived in part or wholly from sources other than Beca, and therefore, no representations or warranties are made by Beca as to the accuracy or completeness of this information.
Map intended for distribution as a PDF document.
Scale may be incorrect when printed.
Contains Crown Copyright Data. Crown Copyright Reserved.

Legend

- Designation Boundary
- Cadastre
- Land Requirement
- Additional Land to be designated

**FOR INFORMATION
NOT FOR CONSTRUCTION**

No.	Revision	By	Chk	Appd	Date
B	Rev B - Issued for Consent	BAP	BTM		16/11/14
A	Rev 1 - Issued for AT review	BAP	BTM		10/11/14

Drawing Originator:

Original Scale (A3)	Design	N/A	-	Approved for Issue *
1:5,000 @ A3	Drawn	BAP	16/11/14	-
AS SHOWN	Dwg Verifier	N/A	-	Date
	Dwg Check	BTM	16/11/14	

* Refer to Revision 1 for Original Signature

Client:

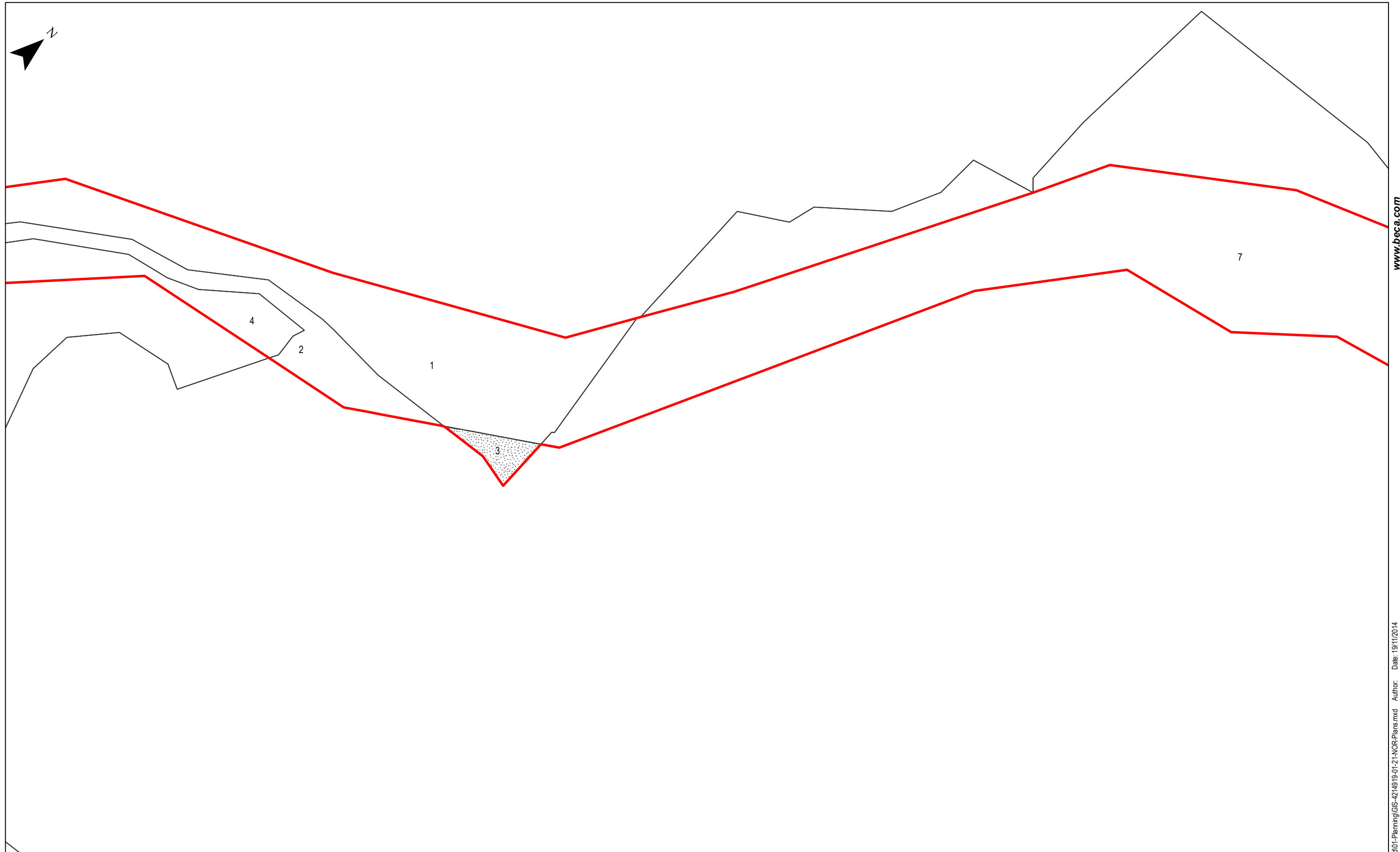
An Auckland Council Organisation

Project: PENLINK - ALTERATIONS & RECONSENTING

Title: LAND REQUIREMENT PLANS

Discipline	GIS
Drawing No.	GIS-4214919-01-NOR-21-1
Rev.	B

File: P:\4214919\GIS\55_Workspaces\01_Planning\GIS-4214919-01-21-NOR-Plans.mxd Author: Date: 19/11/2014



www.beca.com

This map contains data derived in part or wholly from sources other than Beca, and therefore, no representations or warranties are made by Beca as to the accuracy or completeness of this information.
Map intended for distribution as a PDF document.
Scale may be incorrect when printed.
Contains Crown Copyright Data. Crown Copyright Reserved.

Legend

Designation Boundary **Land Requirement**

Cadastre

Additional Land to be designated

**FOR INFORMATION
NOT FOR CONSTRUCTION**

No.	Revision	By	Chk	Appd	Date
B	Rev B - Issued for Consent	BAP	BTM		16/11/14
A	Rev 1 - Issued for AT review	BAP	BTM		10/11/14

Drawing Originator:

Original Scale (A3)	Design	N/A	-	Approved for Issue *
1:5,000 @ A3	Drawn	BAP	16/11/14	
AS SHOWN	Dwg Verifier	N/A	-	
	Dwg Check	BTM	16/11/14	Date

* Refer to Revision 1 for Original Signature

Client:

An Auckland Council Organisation

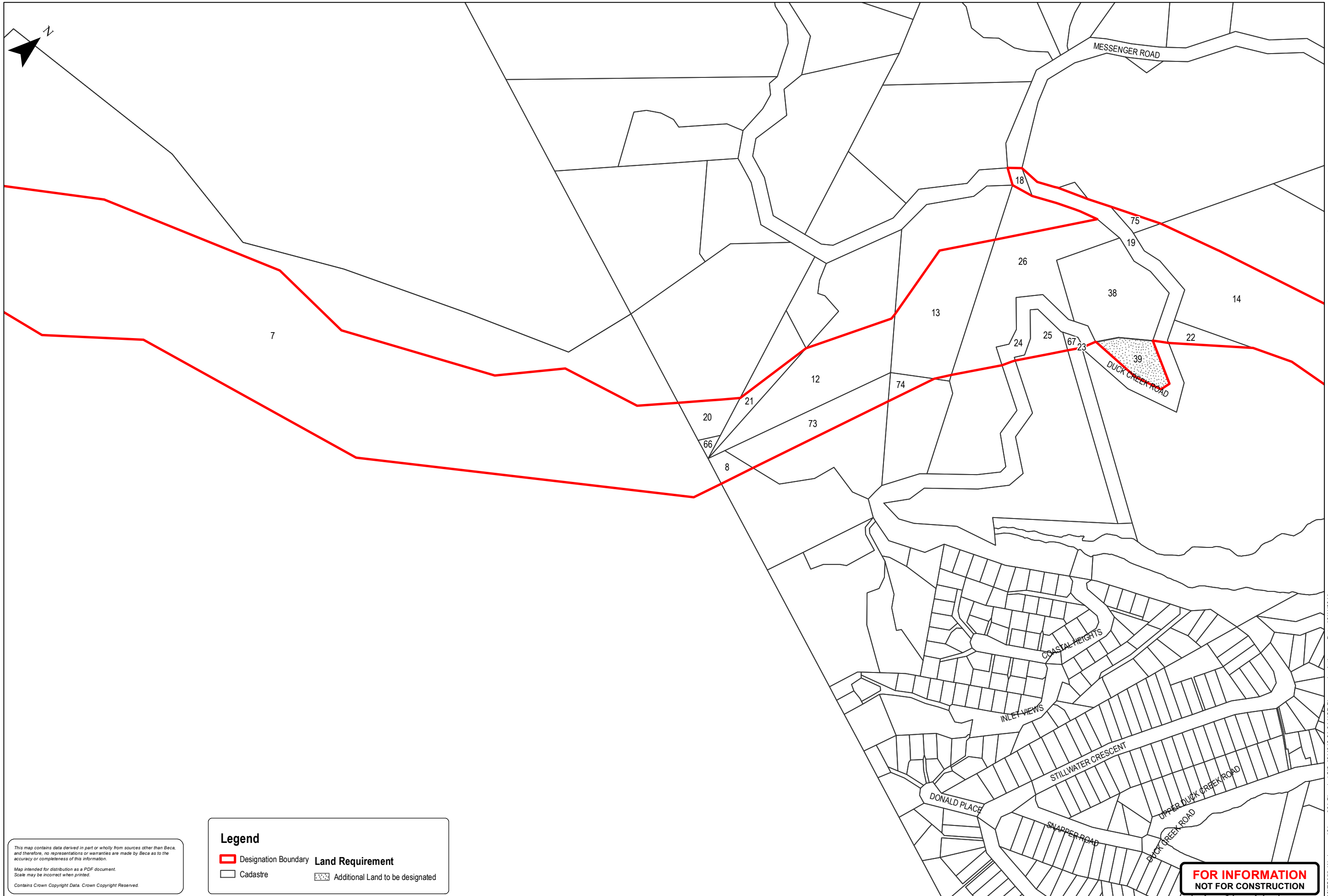
Project: PENLINK - ALTERATIONS & RECONSENTING

Title: LAND REQUIREMENT PLANS

Discipline	GIS
Drawing No.	GIS-4214919-01-NOR-21-2
Rev.	B

O Mahurangi - Penlink Designation Boundaries: confirmed in 2001 (Rodney District Council) and 2015 (Auckland Transport)

Drawing Plotted: 19/11/2014



www.beca.com

File: P:\42142149\GIS\55 - Workspaces\01 - Planning\GIS-4214919-01-21-NOR-Plans.mxd Author: Date: 19/11/2014

This map contains data derived in part or wholly from sources other than Beca, and therefore, no representations or warranties are made by Beca as to the accuracy or completeness of this information.
Map intended for distribution as a PDF document.
Scale may be incorrect when printed.
Contains Crown Copyright Data. Crown Copyright Reserved.

Legend

- Designation Boundary
- Cadastre
- Land Requirement
- Additional Land to be designated

**FOR INFORMATION
NOT FOR CONSTRUCTION**

No.	Revision	By	Chk	Appd	Date
B	Rev B - Issued for Consent	BAP	BTM		16/11/14
A	Rev 1 - Issued for AT review	BAP	BTM		10/11/14

Drawing Originator:

Original Scale (A3)	Design Drawn	N/A	-	Approved for Issue *
1:5,000 @ A3	BAP	BAP	16/11/14	-
AS SHOWN	Dwg Verifier	N/A	-	Date
	Dwg Check	BTM	16/11/14	-

* Refer to Revision 1 for Original Signature

Client:

An Auckland Council Organisation

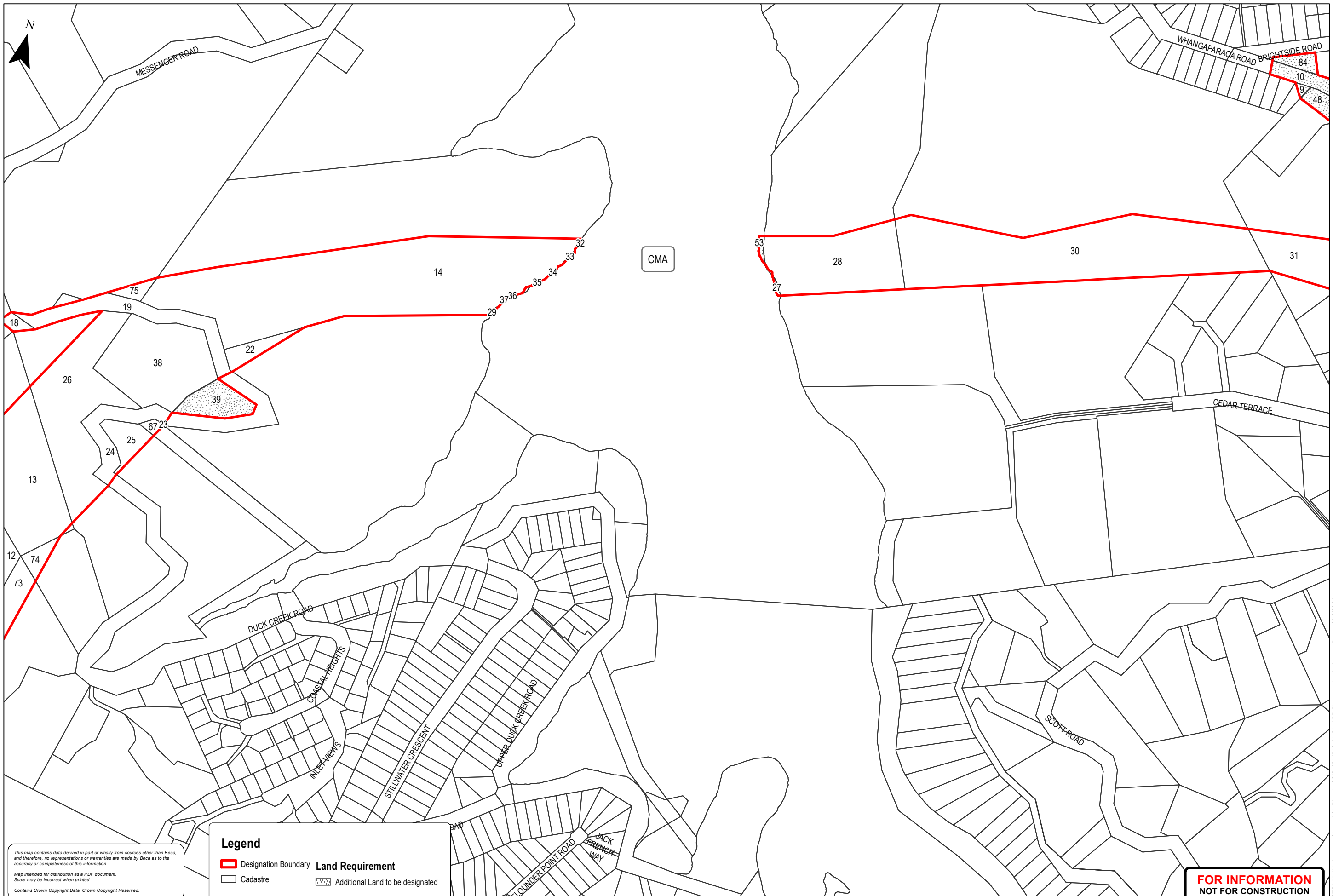
Project: PENLINK - ALTERATIONS & RECONSENTING

Title: LAND REQUIREMENT PLANS

Discipline	GIS
Drawing No.	GIS-4214919-01-NOR-21-3
Rev.	B

O Mahurangi - Penlink Designation Boundaries: confirmed in 2001 (Rodney District Council) and 2015 (Auckland Transport)

Drawing Plotted: 19/11/2014



www.beca.com

File: P:\42142149\19\GIS\55_Workspaces\01_Planning\GIS-42149-01-21-NOR-Plans.mxd Author: Date: 19/11/2014

This map contains data derived in part or wholly from sources other than Beca, and therefore, no representations or warranties are made by Beca as to the accuracy or completeness of this information.
Map intended for distribution as a PDF document.
Scale may be incorrect when printed.
Contains Crown Copyright Data. Crown Copyright Reserved.

Legend

- Designation Boundary
- Cadastre
- Land Requirement
- Additional Land to be designated

**FOR INFORMATION
NOT FOR CONSTRUCTION**

No.	Revision	By	Chk	Appd	Date
B	Rev B - Issued for Consent	BAP	BTM		16/11/14
A	Rev 1 - Issued for AT review	BAP	BTM		10/11/14

Drawing Originator:
Beca

Original Scale (A3)	Design Drawn	N/A	BAP	16/11/14	Approved for Issue *
1:5,000 @ A3	Dwg Verifier	N/A			Date
AS SHOWN	Dwg Check	BTM		16/11/14	

* Refer to Revision 1 for Original Signature

Client: **Auckland Transport**
An Auckland Council Organisation

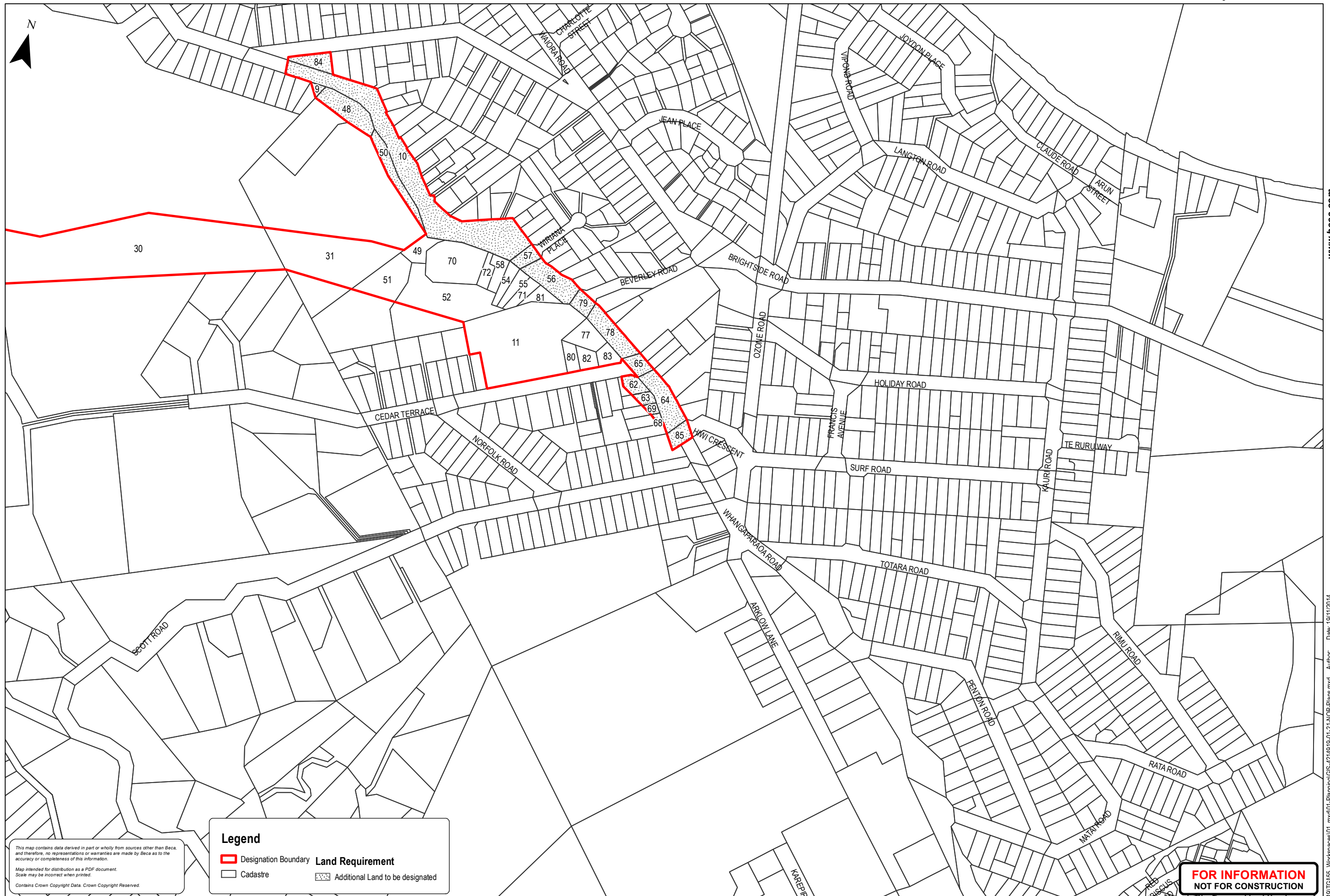
Project: **PENLINK - ALTERATIONS & RECONSENTING**

Title: **LAND REQUIREMENT PLANS**

Discipline	GIS
Drawing No.	GIS-4214919-01-NOR-21-4
Rev.	B

O Mahurangi - Penlink Designation Boundaries: confirmed in 2001 (Rodney District Council) and 2015 (Auckland Transport)

Drawing Plotted: 19/11/2014



This map contains data derived in part or wholly from sources other than Beca, and therefore, no representations or warranties are made by Beca as to the accuracy or completeness of this information.
Map intended for distribution as a PDF document.
Scale may be incorrect when printed.
Contains Crown Copyright Data. Crown Copyright Reserved.

Legend

- Designation Boundary
- Cadastre
- Additional Land to be designated

Land Requirement

FOR INFORMATION
NOT FOR CONSTRUCTION

No.	Revision	By	Chk	Appd	Date
B	Rev B - Issued for Consent	BAP	BTM		16/11/14
A	Rev 1 - Issued for AT review	BAP	BTM		10/11/14

Drawing Originator:

Original Scale (A3)	Design Drawn	N/A	-	Approved for Issue *
1:5,000 @ A3	BAP	N/A	16/11/14	Date
AS SHOWN	Dwg Verifier	N/A	-	Date
	Dwg Check	BTM	16/11/14	Date

* Refer to Revision 1 for Original Signature

Client:

An Auckland Council Organisation

Project: PENLINK - ALTERATIONS & RECONSENTING

Title: LAND REQUIREMENT PLANS

Discipline	GIS
Drawing No.	GIS-4214919-01-NOR-21-5
Rev.	B

www.beca.com Date: 19/11/2014 Author: File: P:\4214919\GIS\55 - Workspaces\01 - Planning\GIS-4214919-01-21-NOR-Plans.mxd