

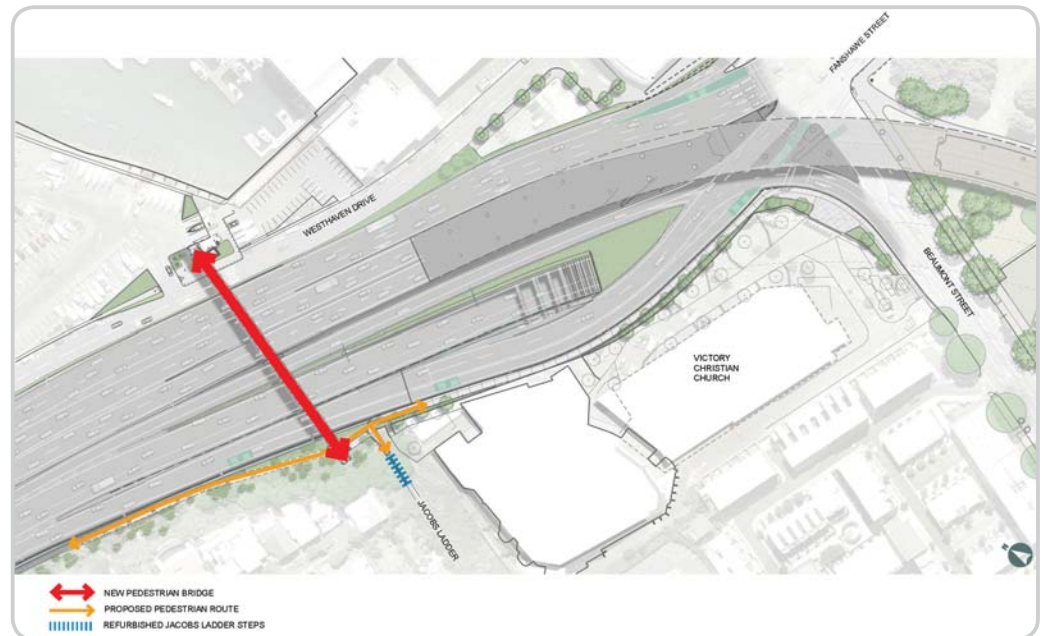
The Jacobs Ladder footbridge

Victoria Park Tunnel INFORMATION

The Jacobs Ladder Footbridge will provide a pedestrian link across the motorway, between St Marys Bay and the waterfront at Westhaven.

The bridge will span the motorway from Jacobs Ladder to the eastern end (Z Pier) of Westhaven Drive. It will be accessed from pedestrian ramps at the Jacobs Ladder end and via steps or a lift at the Westhaven end.

The bridge will be open 24 hours a day, 7 days a week. While designed primarily to restore the traditional land to shore walking link at St Marys Bay, it will also have provision for cyclists.



The design concept

The design of the pedestrian bridge is intricate, with angular features which add visual depth and a sense of movement to the structure. The structure is reminiscent of a draped fish net.

The cladding is to be made of a transparent acrylic material, 20mm thick. A coloured frit pattern will be applied to the cladding to further enhance the sense of movement in the structure. The design of this pattern has been developed by artist Lisa Reihana - the colour referencing a photograph taken by her at sunset. It will give the bridge a golden appearance.

Quick Facts:

Length - 102m

Width - 3.7m

Height - 6.2m above motorway, 3m interior height.

Landing points - **North:** eastern end of Westhaven Drive at Z Pier. **South:** directly west of the reinstated Jacobs Ladder

Access - **North:** Stairs / lift. **South:** Ramp and elevated walkway. The bridge will be accessible 24 hours a day, 7 days a week

Lighting - The bridge will be lit and will benefit from motorway lighting and CTV cameras.

Lighting

The bridge will be lit at night, providing a glowing gateway to the city. Lights will be placed beneath the handrail and within the roof structure of the bridge.

Formal approach lighting along the St Mary's Bay walkway will not be provided as the motorway lighting is expected to be sufficient to light this pathway.

Security

The approaches to the bridge will be monitored by CCTV cameras, as part of the Westhaven Marina's CCTV network.

A Graffiti protection film will be applied to the interior surface of the bridge.