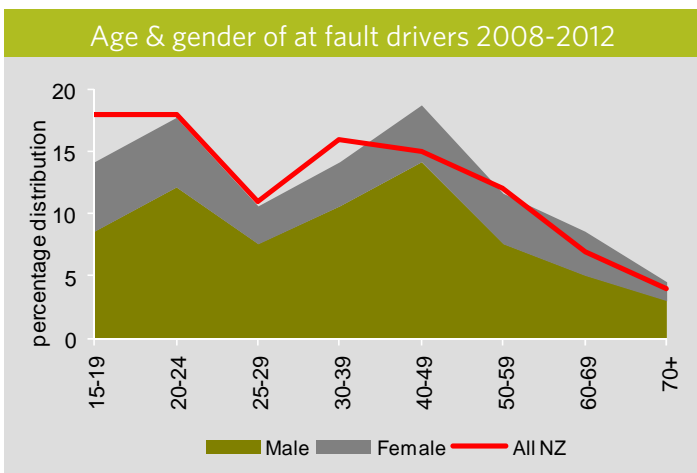
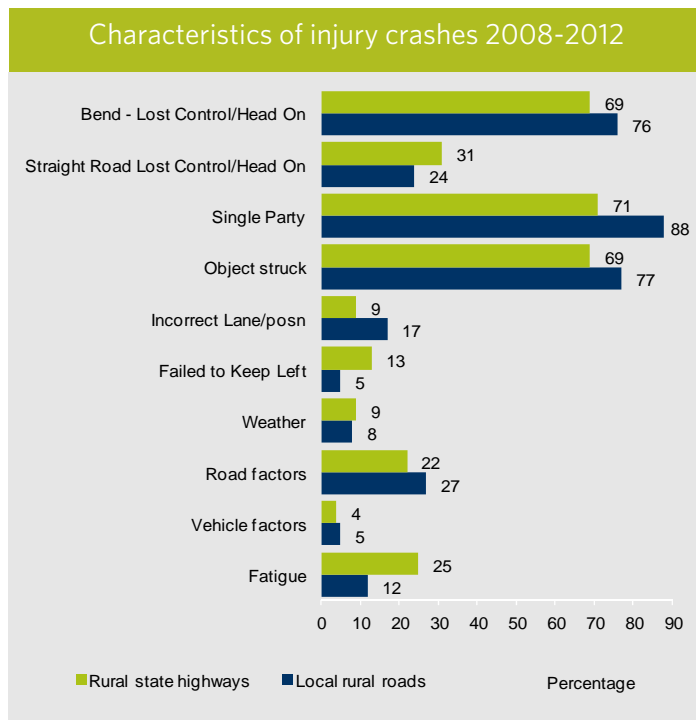
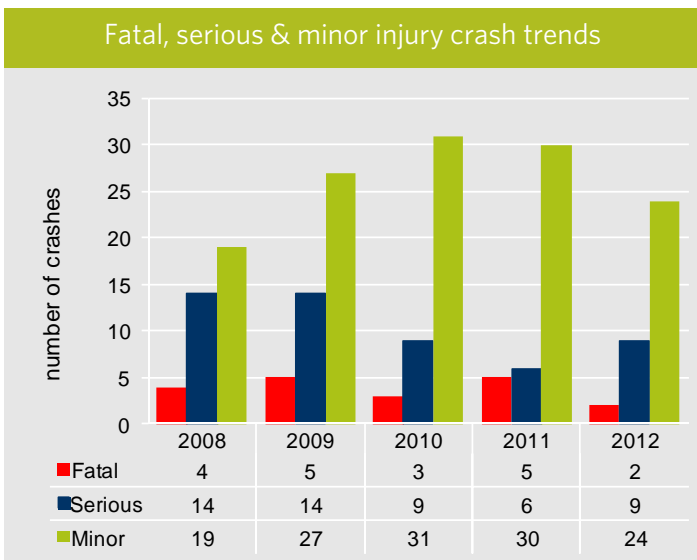


briefing notes crash analysis

a Safe System approach

Rural road loss of control & head-on - South Waikato District

Increasing the safety of rural roads and roadsides is a high strategic priority identified in Safer Journeys. Locally rural road loss of control/head-on crashes are of concern due to the number of deaths and/or serious casualties, which reflects a high level of collective risk.



Further information about these rural road injury crashes locally in 2008-2012:

Local roads

- In 66 crashes - 2 deaths, 25 serious injuries and 66 minor injuries

Safe Speed

- Speed too fast for the conditions - 38 percent

Safe Use

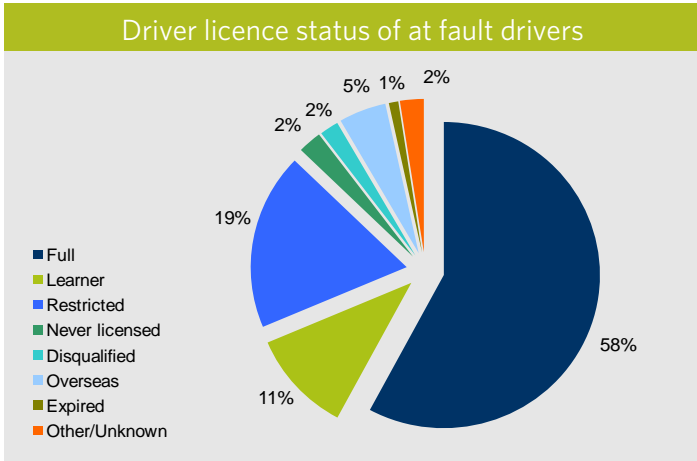
- Young drivers - 37 percent
- Alcohol & drugs - 35 percent

Safe Roads & roadsides

- Rural roads - 33 percent were on local roads
- Intersections - 9 percent

Safe Vehicles

- Motorcyclists - 6 percent
- Trucks - 8 percent



State highways

- In 136 crashes - 24 deaths, 49 serious injuries and 137 minor injuries

Safe Speed

- Speed too fast for the conditions - 27 percent

Safe Use

- Young drivers - 29 percent
- Alcohol & drugs - 14 percent

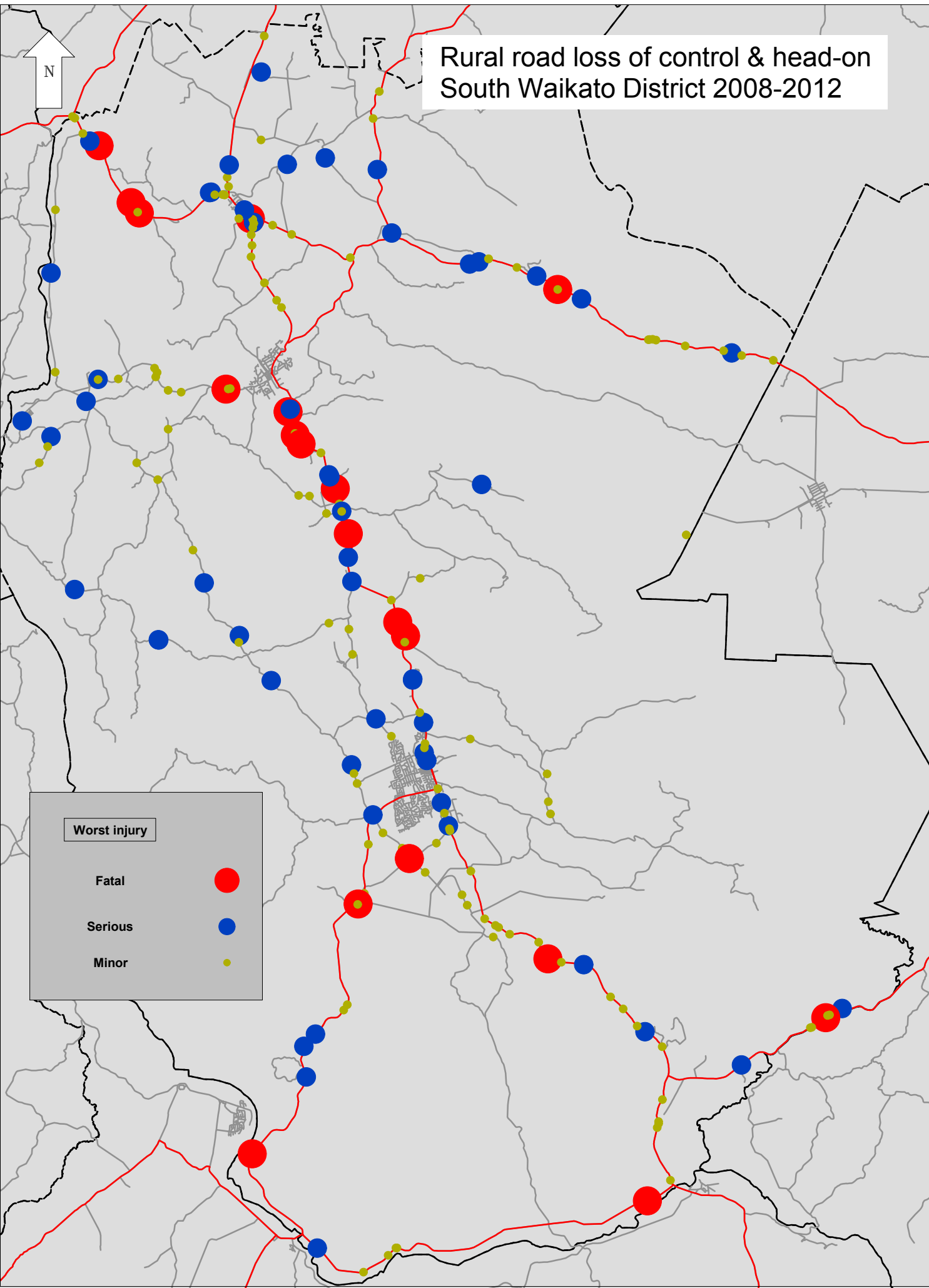
Safe Roads & roadsides

- Rural roads - 67 percent were on state highways
- Intersections - 11 percent

Safe Vehicles

- Motorcyclists - 6 percent
- Trucks - 15 percent

Rural road loss of control & head-on South Waikato District 2008-2012



Worst injury	
Fatal	●
Serious	●
Minor	●