



New Zealand Government

briefing notes - road safety issues

Franklin District

Land Transport New Zealand has prepared this road safety issues report. It is based on reported crash data and trends for the 2003–2007 period.

The intent of the report is to highlight the key road safety issues and be a resource to identify possible ways to reduce the number of road deaths and injuries in Franklin District.

This report is the ninth road safety report for Franklin District. All the material unless otherwise stated in this report applies only to local roads.

In each new report one year's data is added to a five year block and the oldest dropped so it is unlikely that the core issues would change radically from report to report.

The issues chosen for this report are drawn from either the most common crash types, those that appear over-represented when Franklin District is compared to similar local bodies or those with high social cost (high numbers of fatal and serious crashes mainly).

We have included a brief overview of crashes in the district.

We encourage Franklin District to use its free access to the Ministry of Transport's Crash Analysis System (CAS) to delve deeper into the highlighted issues. All data and maps in this note are from CAS.

Major road safety issues

Franklin District

Bends

Night time crashes

Alcohol

2007 road trauma

Casualties

Franklin District

Deaths 9

Serious casualties 29

Minor casualties 141

Nationally

Speed

Alcohol

Failure to give way

Restraints

Crashes

Franklin District

Fatal crashes 9

Serious injury crashes 19

Minor injury crashes 117

Non-injury crashes 285

Overview

In 2007 on local roads in Franklin District there were 145 injury crashes and 285 non-injury crashes. In addition there were 43 injury crashes and 85 non-injury crashes on State Highways both as reported by the New Zealand Police.

The table below shows the number of injuries resulting from the 145 local road injury crashes by rural or urban areas for all roads (rural is defined as an area with a speed limit of 80km/h or more).

Casualties by injury type 2007				
	Fatalities	Serious injuries	Minor injuries	Total
Rural	9	24	104	137
Urban	0	5	37	42
Total	9	29	141	179

Fatalities and serious injuries numbers have fluctuated over the last decade with no clear trends either up or down.

Minor and non-injury crash numbers have somewhat fluctuated over the last decade but have generally increased.

Crash trends in Franklin District				
Year	Fatalities	Serious injuries	Minor injuries	Total
1998	11	38	127	176
1999	8	47	117	172
2000	3	24	92	119
2001	9	21	97	127
2002	13	33	141	187
2003	9	32	179	220
2004	14	44	156	214
2005	7	28	159	194
2006	10	47	191	248
2007	9	29	141	179

Crash types and contributory crash causes 2003 to 2007

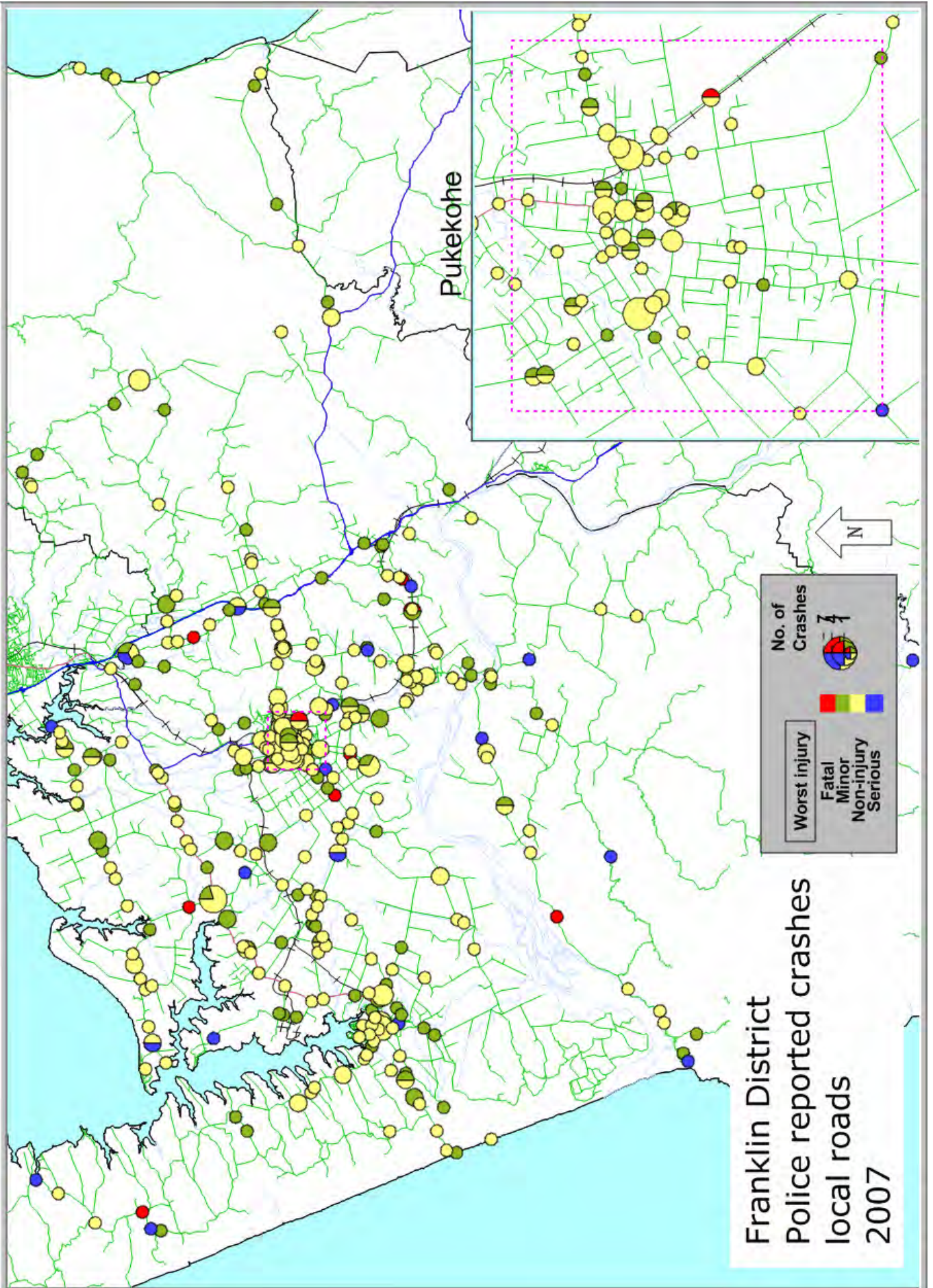
Crash type or contributory cause	Percentage fatal and serious crashes of this type or contributory cause	Percentage all injury crashes of this type or contributory cause
Alcohol	27	19
Too fast	26	24
At bends	47	46
At intersections	28	31
Fatigue	8	5
Pedestrian	4	5
Road factors	12	16
Night time	45	37
Wet	27	30

Further information about the 758 injury and 1206 non-injury crashes on local roads in Franklin District 2003 to 2007:

- Worst month March, best November
- Worst day Friday, best Monday
- Worst three hour time period 3pm till 6pm
- 35 percent at intersections
- 61 percent rural
- 55 percent of at fault drivers in injury crashes held a full NZ drivers licence
- 24 percent of at fault drivers in injury crashes were aged 19 or less
- Social cost of crashes in 2007 \$63.5m

Further information about the 220 injury and 408 non-injury crashes on State Highways in Franklin District 2003 to 2007:

- Worst month December, best April
- Worst day Friday, best Tuesday
- 36 percent on wet roads
- 39 percent at night
- 21 percent at intersections
- 62 percent of at fault drivers in injury crashes held a full NZ drivers licence
- Social cost of crashes in 2007 \$29.5m



Crashes at bends

Between 2003 and 2007 forty six percent of all injury crashes in Franklin District occurred at bends. These crashes resulted in 20 fatalities, 85 serious injuries and 365 minor injuries.

Crash numbers have remained fairly steady since 2003 with the exception of 2006.

Injury Crashes at bends 2003 to 2007				
Crash year	Fatal crashes	Serious crashes	Minor crashes	Total
2003	4	11	46	61
2004	7	16	40	63
2005	2	12	52	66
2006	3	15	68	86
2007	4	11	88	73
Total	20	65	264	349

Most crashes at bends involved a driver losing control of their vehicle and either running off the road or colliding with another vehicle.

After drivers lose control, their vehicles often crash into roadside objects such as ditches, banks, poles or trees. Hitting these objects can result in a relatively minor off-road event turning into something far more serious.

The most common roadside objects struck in injury crashes in Franklin District were cliffs or banks (82), ditches (66), trees (42) and fences (85) from a total of 380 objects struck.

Main characteristics of injury crashes at bends	
Crash characteristic	Percentage of crashes
Single vehicle	84
Alcohol	23
Excessive speed for the conditions	42
Road factors	25
Poor handling	42
Rural road	86
Wet road	40
Night time	41
Fatigue	5

Further information about the 349 injury crashes on bends (2003 to 2007) on local roads in Franklin District:

- 20 deaths, 85 serious injuries and 365 minor injuries
- 66 percent of at fault drivers were male
- Most common crash type "Lost control turning right" (52 percent of all bend crashes)
- Most common at fault driver age group 15-19 years
- 49 percent of at fault drivers in injury crashes held a full NZ drivers licence
- 23 percent of crashes involved alcohol
- Worst month May, best September
- Worst day of week Sunday, best Monday
- Worst time period 6pm to 9pm

Further information about the 89 injury crashes on bends (2003 to 2007) on State Highways in Franklin District:

- 8 deaths, 35 serious injuries and 96 minor injuries
- 55 percent at night
- 44 percent in the wet
- 16 percent fatigue a factor
- 10 percent with road factors
- 25 percent with speed too fast for the conditions
- 74 percent of at fault drivers were male
- Most common crash type "Lost control turning left" (46 percent of all bend crashes)
- Most common age group 20-24 years
- 54 percent of at fault drivers in injury crashes held a full NZ drivers licence
- 19 percent of crashes involved alcohol
- Worst months January, March, July, October and December (equal), best April and August
- Worst day of week Saturday, best Monday
- Worst time period midday to 3pm

Night time crashes

Between 2003 and 2007 forty five percent of fatal and serious crashes occurred at night in Franklin District.

In similar local bodies it was 39 percent and for local roads in all New Zealand it was 38 percent.

Between 2003 and 2007 there were a total of 283 night time injury crashes resulting in 32 fatalities, 109 serious injuries and 375 minor injuries.

Night time crashes by road type					
Road Type	2003	2004	2005	2006	2007
Urban	38	44	33	47	38
Rural	18	22	12	18	13
Total	56	66	45	65	51

Night time injury crashes by weekend or weekday		
Worst injury	Weekend (Friday 6pm till Monday 6am)	Weekday Monday 6am till Friday 6pm)
Fatal	10	11
Serious	24	37
Minor	97	104
Total	131	152

Younger drivers are highly represented in night times crashes in Franklin District with 53 percent of all at fault drivers being aged under 30 years old.

Possibly this is a result of two factors - firstly that younger people drive far more at night and secondly despite the fact that they see better at night than older drivers and have better glare recovery, they underestimate how difficult it can be to see traffic hazards at night.

Age and gender of at fault drivers in injury crashes (2003 to 2007)

(note age ranges are not equal)

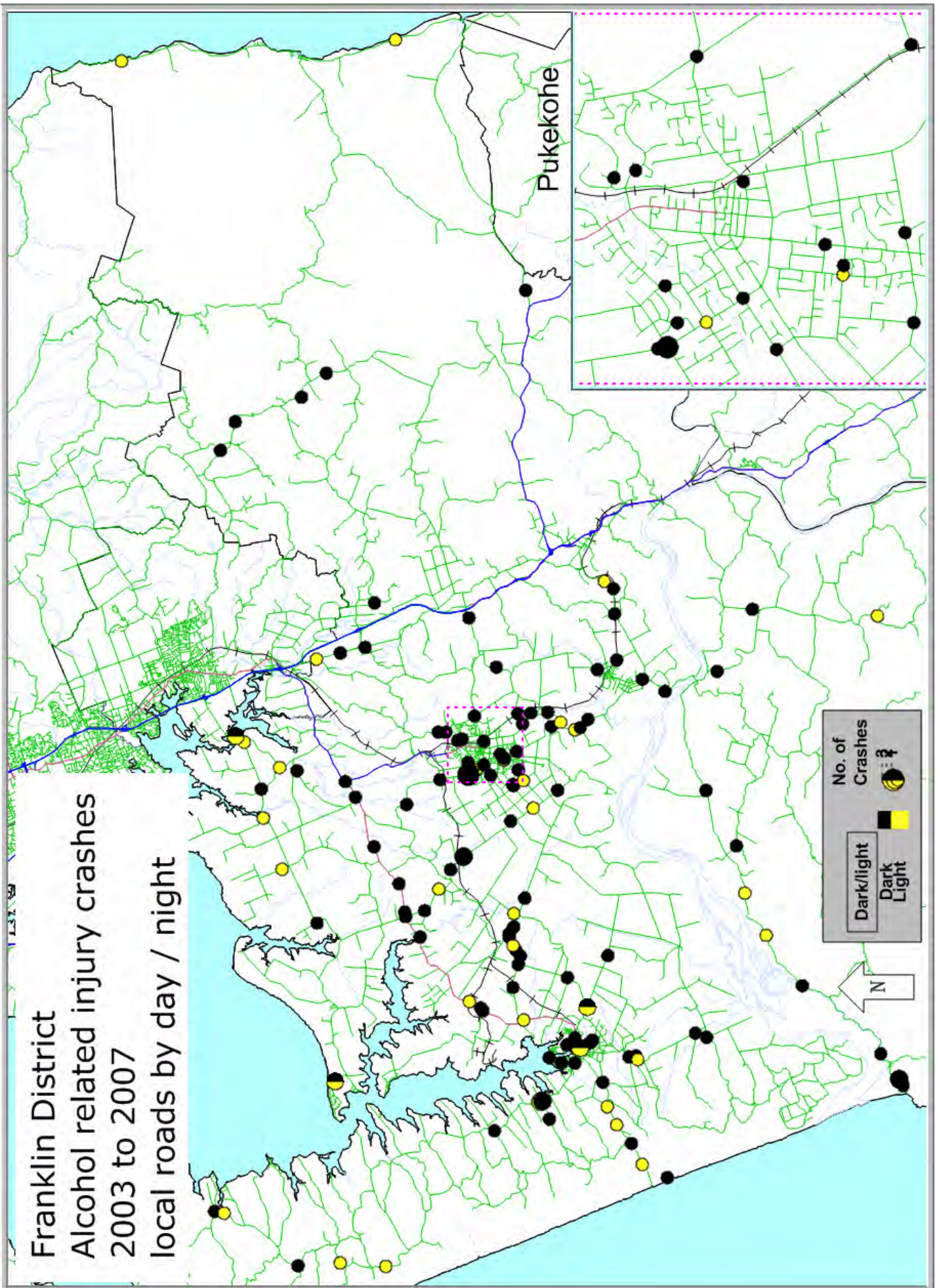
Ages of drivers	Male	Female	Total
15- 19	46	19	65
20 - 24	38	18	56
25 - 29	20	5	25
30 - 39	38	11	49
40 - 49	32	14	46
50 - 59	16	4	20
60 - 69	7	0	7
70+	4	2	6
Total	201	73	274

Further information about the 283 night time injury crashes on local roads in Franklin District 2003 to 2007:

- 22 deaths, 77 serious injuries and 272 minor injuries
- Most common crash type "Lost control turning right" (28 percent of all crash types)
- 38 percent include alcohol
- 32 percent wet road
- 30 percent to fast for the conditions
- Worst month July, best November
- Worst day of week Saturday, best Monday

Further information about the 96 night time injury crashes in Franklin District on State Highways 2003 to 2007:

- 10 deaths, 32 serious injuries and 104 minor injuries
- Most common crash type "Lost control turning left" (26 percent of all crash types)
- 30 percent include alcohol
- 45 percent wet road
- 22 percent speed related
- Worst months February and December (equal), best January
- Worst day of week Sunday , best Wednesday



Alcohol

Alcohol affects the way people drive. Studies show that the risk of being involved in a crash increases rapidly as a driver's blood alcohol level rises.

A driver over the legal limit (80mg of alcohol per 100ml of blood) is three times more likely to be involved in a crash than a sober driver.

Contrary to popular opinion, people with high blood alcohol levels are more likely to be injured or killed in a crash than sober drivers in the same crash and if injured, they are also more likely to encounter complications in their recovery.

In New Zealand for the 12 months to December 2007, alcohol-affected drivers contributed to 33 percent of all fatal crashes and 15 percent of all injury crashes (the same as 2006).

There were 8005 alcohol-related injury crashes reported in New Zealand in the last five years.

In Franklin District, alcohol was a factor in 19 percent of injury crashes in 2007.

Alcohol related injury crashes			
Crash year	Open road	Urban road	Total
2003	22	10	32
2004	20	10	30
2005	19	3	22
2006	17	9	26
2007	26	6	32
Total	104	38	142

The crash locations of alcohol related crashes occurring between 2003 and 2007 are shown on the map on the following page.

From the beginning of 2007 Land Transport NZ has been adding driver factor codes to all non-injury crashes for the northern region.

In 2007 on local roads and State Highways there were 51 non-injury alcohol related crashes reported by the Police in Franklin District.

This will allow the Police and other agencies to target alcohol related crashes more quickly and with even more geographic accuracy than ever before.

Further information about the 142 alcohol related injury crashes in Franklin District on local roads 2003 to 2007:

- 19 deaths, 46 serious injuries and 133 minor injuries
- 76 percent of at fault drivers were male
- Most common crash type "Lost control turning right"
- 27 percent at intersections
- 27 percent urban
- 25 percent wet road
- 75 percent night time
- Worst month August, best June
- Worst day of week Saturday, best Monday
- 57 percent of at fault drivers held either a Learner or Restricted licence, or were Disqualified or had never held a drivers licence

Further information about the 34 alcohol related injury crashes in Franklin District on State Highways 2003 to 2007:

- 4 deaths, 14 serious injuries and 34 minor injuries
- 77 percent of at fault drivers were male
- Most common crash type "Lost control turning right and Lost control turning left" (equal)
- 12 percent at intersections
- 18 percent urban
- 29 percent wet road
- 85 percent night time
- Worst month December, best January, May and September (equal)
- Worst day of week Sunday, best Monday, Tuesday and Wednesday
- 53 percent of at fault drivers held either a Learner or Restricted licence, or were Disqualified or had never held a drivers licence

National issues

This section contains some brief information on the key national road safety issues as measured on local roads in Franklin District.

They may have been covered elsewhere in this document or not be a specific issue.

Speed

"Too fast" was recorded in 24 percent of injury crashes in the district in the last five years resulting in 18 deaths and 254 other injures. Speed as a factor in crashes is not reducing in the district.

Seventy-nine percent of speed-related crashes were "loss of control" at bends. Alcohol and poor handling were the other driver factors often associated with speed.

At fault male drivers aged less than 25 were the most highly represented in speed-related crashes.

Alcohol

Alcohol was involved in 19 percent of injury crashes in the district in the last five years resulting in 19 deaths and 179 other injuries. The number of injury crashes involving alcohol is not decreasing.

Most alcohol crashes were in rural areas of the district.

Speed and poor handling were the other factors often associated with alcohol.

Failure to give way

Failure to give way or stop was reported in 18 percent of all reported injury crashes for the last five years resulting in 10 deaths and 204 other injuries.

Just under half of crashes were in urban areas of the district.

Restraints

The Ministry of Transport conducts surveys of restraint use. The results of these surveys are at a Regional Council, Police District and local body level.

The front seat belt wearing rate in Franklin was 93 percent in 2007 this was lowest in the Auckland and Northland regions

The results are obtainable from the Ministry of Transport website:

<http://www.transport.govt.nz/safety-belt-statistics-front-seat-200-1/>

Contacts

Land Transport New Zealand

Partnership Manager (Northern)
Peter Kippenberger

Manager Performance Information (Northern)
Chris Hewitt

Manager Programmes (ARTA)
Geoffrey Mansell

Private Bag 106 602
Auckland
Phone 09 969 9800

www.landtransport.govt.nz

New Zealand Police

Inspector Heather Wells
Road Policing Manager
Counties Manukau Police District
Manukau Police Station
42 Wiri Station Road
Private Bag 76920
Manukau City

Phone: 09 261 1372

Local Authority

Land Transport Manager and Community Road
Safety Advisor

Franklin District Council
Private Bag 5
Pukekohe
Phone 09 237 1300

www.franklin.govt.nz