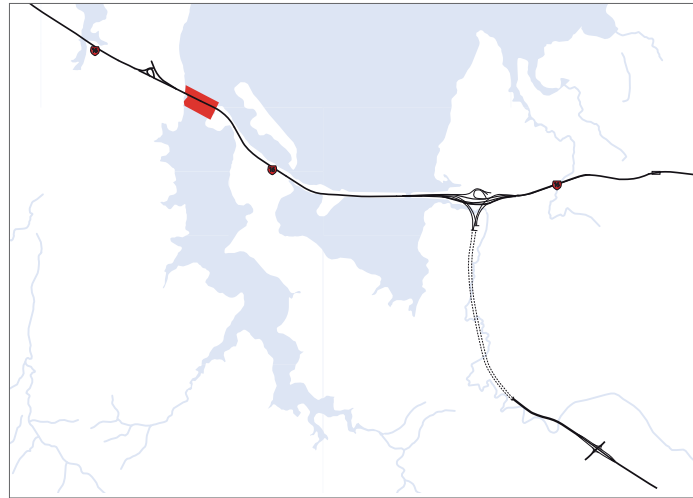


C2 Sector 2 Whau River



Sector 2 works include widening of the motorway across the Whau River crossing, and on reclaimed land near Rosebank Domain. Additional reclamation is proposed to enable improved stormwater treatment, with the additional benefit of relocating the northwestern cycleway further away from the vehicle traffic.



Figure C-2.1: Aerial view of the sector 2 from the north

C1.2.1 Existing situation

Sector 2 includes the enlargement of the existing Whau River Bridge to accommodate additional lanes. A separate dedicated cycle/pedestrian bridge is to also be constructed alongside the enlarged Whau River Bridge.

Movement and connectivity

- Local road stops at raceway; off-road cycleway continues westwards.

Landscape, planting, views

- Transition between harbour and peninsular landscape areas
- Views from the mainline to surrounding areas are not promoted due to crossfall, but views to CBD skyline are available from slower eastbound traffic lanes and elevated cycleway.

Urban form

- Residential development to the south along the Whau River, with Te Atatu Boat Club occupying a large area of the foreshore with Bridge Avenue Reserve
- Rosebank Domain is used for vehicle racing, with some buildings and areas of open ground used for spectating.

Structures

- Whau Bridge ramps up towards Te Atatu
- Bridge has a narrow cycle lane immediately adjacent to vehicle lanes and with steel edge barriers
- Pier layout and deck elevation of bridge enables boat passage, boat moorings immediately to south.



Figure C-2.2: Photo 2-1 Existing view to the north adjacent Rosebank Domain on off-road route



Figure C-2.3: Photo 2-2 Existing view westwards adjacent to Rosebank Domain



Figure C-2.4: Photo 2-3 Existing view westwards crossing the Whau River on the off-road route

Western Ring Route ▶ Waterview Connection



Figure C-2.5: Whau River existing plan

Section C ▶ Sector Design Concepts

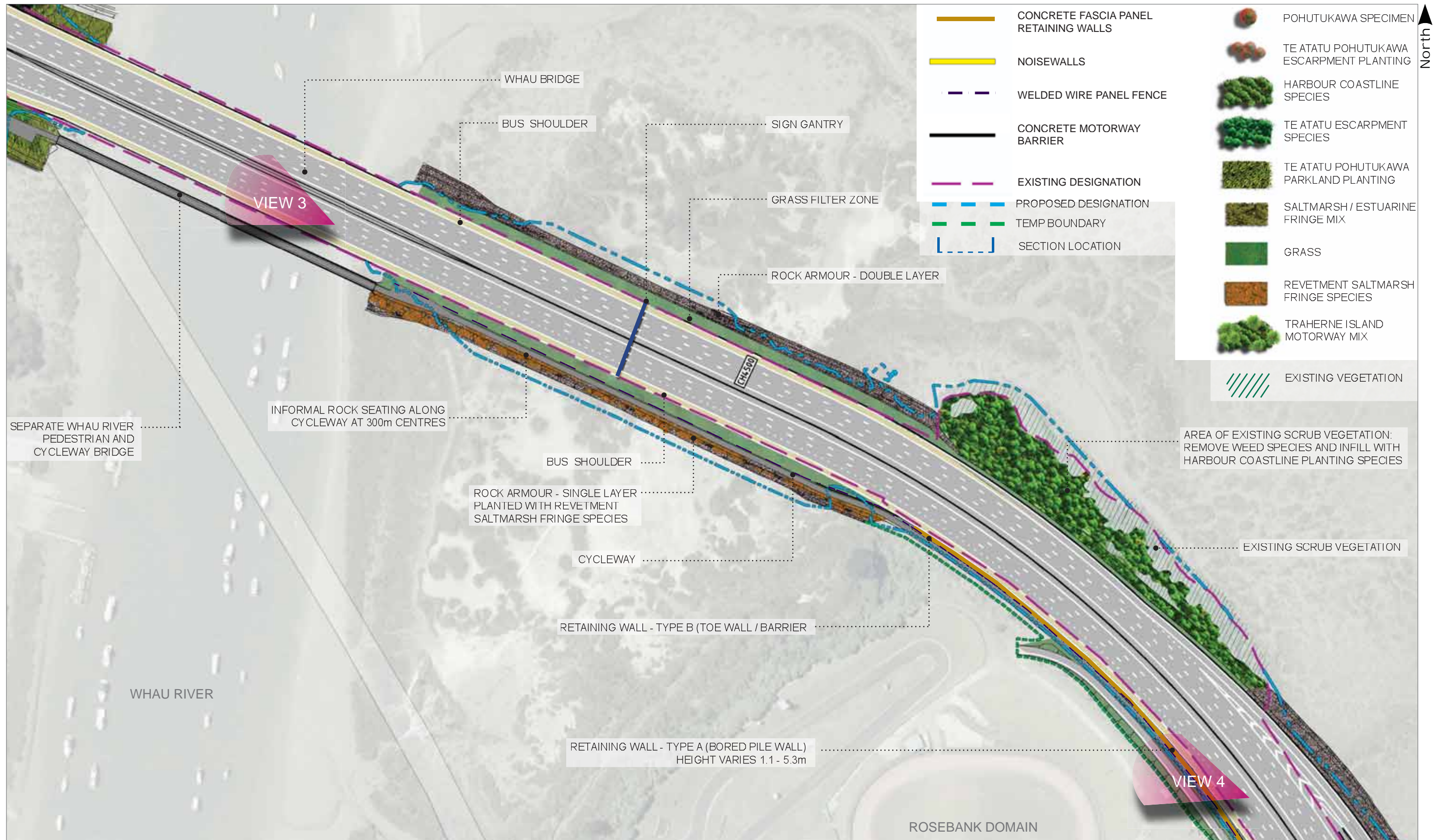


Figure C-2.6: Whau River concept plan

