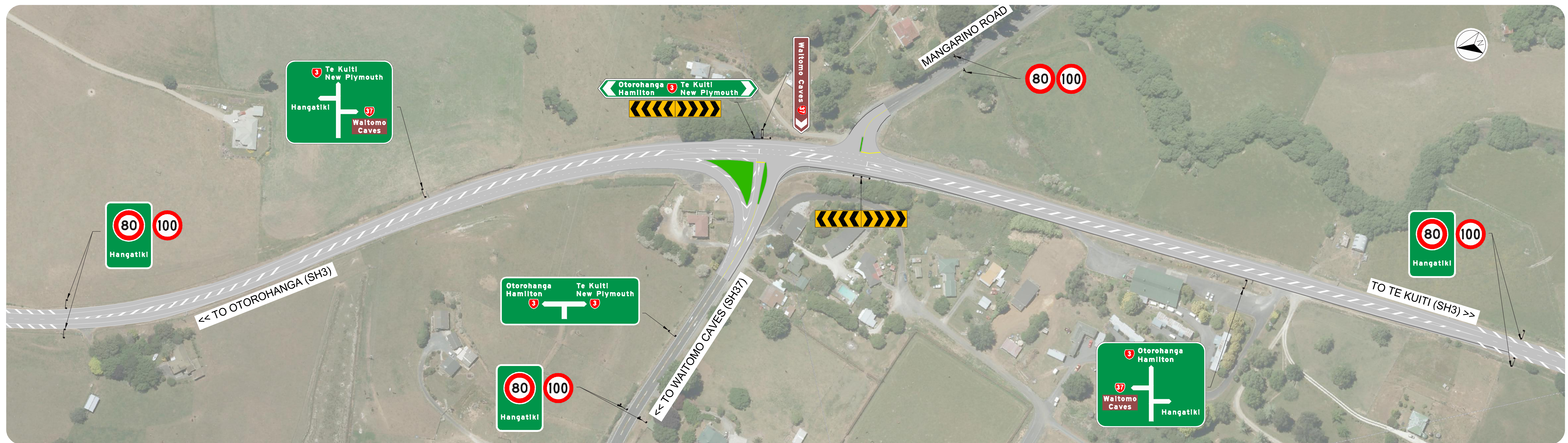


Option 2 "T-Intersection" with Slip Lane

3 37 SH3 / SH37 Intersection: Option 2 "T - Intersection" with Slip Lane



Main features of this option:

- Permanent speed limit of 80 km/h on SH3 and SH37
- Wide painted median on SH3 and facility for right-turn movements
- Left-turn slip lane from SH37 onto SH3 for northbound traffic
- Widening of the road along SH3 over the length of the site
- Estimated construction cost \$1.2M

Advantages:

Improved visibility for exiting SH37
Left-turn slip lane creates a physical separation for northbound traffic exiting SH37
Lowered permanent speed limit on SH3 and SH37 from 100 km/h to 80 km/h

Wide painted median on SH3:

- Separates opposing traffic
- More space for turning right
- Includes provision of a right-turn bay into Mangarino Road
- Allows more space on SH3 for vehicles entering or exiting the motel south of the intersection

Disadvantages:

Retains the close proximity of the two intersections along SH3 (SH37 and Mangarino Road)

SH37 left-turn slip lane has a merge length shorter than desirable

No physical separation of opposing traffic

Right-turning traffic still has to cross 80 km/h traffic lanes

Higher chance of severe injury crashes for right turning traffic if people make mistakes

Wide painted median on SH3 to the south of the intersection may contribute to unsafe and illegal passing manoeuvres

Relies on SH3 traffic travelling at appropriate speeds through the intersection