

# Crash Test Results

## New Car Safety

### RENAULT LAGUNA III (LHD)

June 2008 on Front+side+head airbags



**ANCAP** Occupant  
Protection  
Rated ★★★★★

**Occupant Protection Score 35.91 out of 37**

Variant: 5dr hatch Eng: 2 litre diesel, manual  
Kerb weight: 1390 kg Category: Medium Car  
Vehicles built: 2007 Tested by Euro NCAP

**Important note:** The diesel left-hand-drive European model was tested by Euro NCAP. Australasian specifications may vary and therefore models sold in Australasia might provide different levels of protection to those described on this page.

#### Model History and Safety Features

The tested model of Renault Laguna III was introduced in Australia during June 2008.

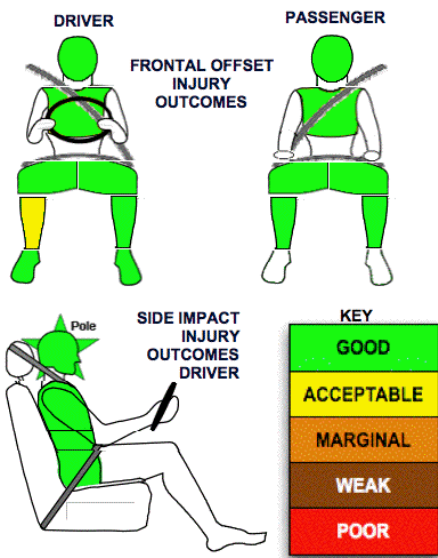
Dual front airbags, side airbags and head-protecting side curtains are standard equipment. Antilock brakes (ABS), electronic brake distribution (EBD) and electronic stability control (ESC) are also standard. Intelligent seat belt reminders are fitted all seats.

The front seat belt buckles are mounted on the seats and the upper anchorages are adjustable. These features improve the fit of the seat belt. Pretensioners are fitted to the front seat belts to reduce slack in the event of a crash. A three point seat belt is fitted to the centre rear seat. This provides better protection than a two point (lap) seat belt.

#### OCCUPANT PROTECTION: 5 Stars

The Laguna scored 15.91 out of 16 in the offset crash test. The passenger compartment held its shape well. There was a slight risk of serious leg injury for the driver.

The vehicle scored 15 out of 16 in the side impact crash test. Injury values were all good but a door opened during the crash. A further two points in the optional pole test.



Offset crash test at 64km/h

#### FRONTAL OFFSET CRASH TEST (v4.1)

Body region scores out of 4 points each: Head/neck 4 pts, chest 4 pts, upper legs 4 pts, lower legs 3.91 pts.

The passenger compartment held its shape well in the offset crash test. The brake pedal moved rearwards by 35 mm. The clutch pedal moved upwards 12 mm. The steering wheel hub moved 1 mm rearward, 1 mm upward and 10mm sideways. The front ("A") pillar moved 27 mm rearwards. All doors remained closed during the crash. After the crash the driver's door could be opened with high manual effort.

The airbag cushioned the head of the driver and contact was stable. There were no knee hazards. The passenger's head was cushioned by the airbag.

#### SIDE IMPACT CRASH TEST (v4.1)

Body region scores out of 4 points each: Head 4 pts, chest 4 pts, abdomen 4 pts, pelvis 4 pts.

One point was deducted because the rear door opened during the crash.

The vehicle was eligible for an optional pole impact test, since it had head-protecting side airbags and scored four points for the head in the side impact test. The manufacturer decided to go ahead with the pole test and the vehicle earned a further two points.

#### PEDESTRIAN PROTECTION: 2 Stars

The front edge of the bonnet scored no points for its protection of pedestrians' legs. The bonnet's protection of pedestrians' heads was predominantly poor.

PEDESTRIAN PROTECTION		
 Rated ★★☆☆	Child head impacts	3.39
	Adult head impacts	0.81
	Upper leg impacts	Zero
	Lower leg impacts	5.72
	Total (out of 36)	9.92



GOOD  
ADEQUATE  
MARGINAL

Pedestrian protection

June 2008

PO Box 4041  
Manuka ACT 2603  
laguna08.doc  
Issued 23/05/2008



**ANCAP**  
Crash testing for safety  
AUSTRALASIAN  
NEW CAR ASSESSMENT  
PROGRAM

# TECHNICAL DATA - RENAULT LAGUNA III - June 2008 on

## INJURY MEASUREMENTS

Body region	Offset Crash Test at 64km/h (v4.1)		Side Impact Crash Test at 50km/h (v4.1)
	Driver	Passenger	Driver
<b>Head HIC</b>	245	309	34
Acceleration (g for 3ms)	39.5	46.6	24.0
<b>Neck - Shear (kN)</b>	0.49	0.71	-
Tension (kN)	1.25	1.42	-
Extension (Nm)	17.0	31.5	-
<b>Chest Accln (g for 3ms)</b>	-	-	-
Compression (mm)	18.10	15.66	15.90
Viscous criterion (m/s)	0.07	0.06	0.09
<b>Abdomen - Force (kN)</b>	-	-	0.380
<b>Pelvis - Force (kN)</b>	-	-	1.420
<b>Upper legs Force (kN)</b>			
Left	0.17	0.61	
Right	0.00	0.74	
Knee displ (mm)			
Left	0.00	0.00	
Right	0.00	0.00	
<b>Lower legs Force (kN)</b>			
Left	1.59	1.62	
Right	1.18	1.69	
Index (Upper/Low)			
Left	0.28 /0.24	0.33 /0.32	
Right	0.42 /0.18	0.35/0.22	

### Bonus points (maximum 5)

Pole Test: 2 pts

Seat belt reminders: 3 (see table below for details)

### Modifiers - deductions from offset test scores

Head	No deduction
Chest	No deduction
Upper leg Variable & conc. loading	No deduction
Lower leg	No deduction
Foot score	Score 4 points

### Modifiers - deductions from side impact test scores

Chest	No deduction
Door opened	1 pt deduction

### Safety features

These specifications are subject to change. Please check with manufacturer for the latest specifications.



Driver airbag	S	Antilock (ABS) brakes / Electronic brake distribution / Brake Assist	S/S/S
Passenger front airbag	S	Electronic stability control (ESC, VSC, DSC, ESP, VSA)	S#
Side airbags, front seats - chest protection	S	3 point centre rear seat belt	S
Side airbags, front seats - head protection	S	Active head restraints - front seats	S
Side airbags, rear seats - head protection	S	Intelligent seat belt reminder - driver	S
Driver knee airbag	X	Intelligent seat belt reminder - front passenger	S
Seat belt pretensioners (Front/Rear outboard)	S/S	Rear seat belt status indicator	S

Key:

S = standard on all variants

O = optional on base variant. May be standard on higher variants

V= not available on base variant but standard or optional on higher variants

X = not available on any variant

# ESC required by ANCAP for 5 star rating from 2008