

One Network Framework Current State: Annual Review Process

Purpose

The purpose of this document is to provide a high-level description of the process for the annual review of the ONF current state¹ classification, using RAMM. This approach is to ensure the current network function is accurately represented and data is maintained.

Background

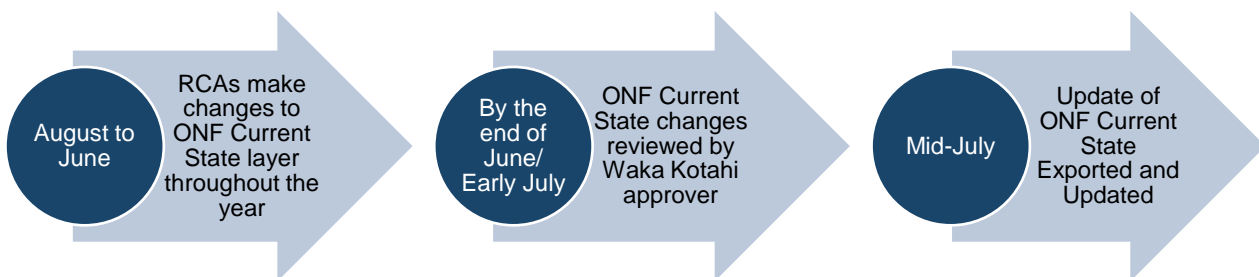
For the current 2021-24 National Land Transport Programme (NLTP) period there is an annual process for Road Controlling Authorities (RCAs) to review their classification of the current network (previously the One Network Road Classification (ONRC)) layer in RAMM in collaboration with Waka Kotahi Investment Advisors.

The One Network Framework (ONF) will be the classification tool used from the 2024-27 NLTP period. The current ONF classification should reflect how the network functions today. To ensure this is maintained, an Annual Review Process has been developed.

High level process and timeline

The annual review process will correspond with the financial year planning cycle. The diagram below sets out a high-level summary of the review process and associated timeline within the financial year. This process is only required if changes are proposed to be made to the ONF current state layer. This is an annual process within which updates can be made to ensure the current network classification is still accurate.

RCAs and Waka Kotahi can agree to undertake the annual review at any time leading up to the end of the financial year. The classifications must be reviewed and updated in RAMM prior to mid-July each year to ensure that the updated New Zealand ONF layer can be used in other systems (e.g. GIS tools (Megamaps, Maphub) and Transport Insights tool) from 1st August each year.



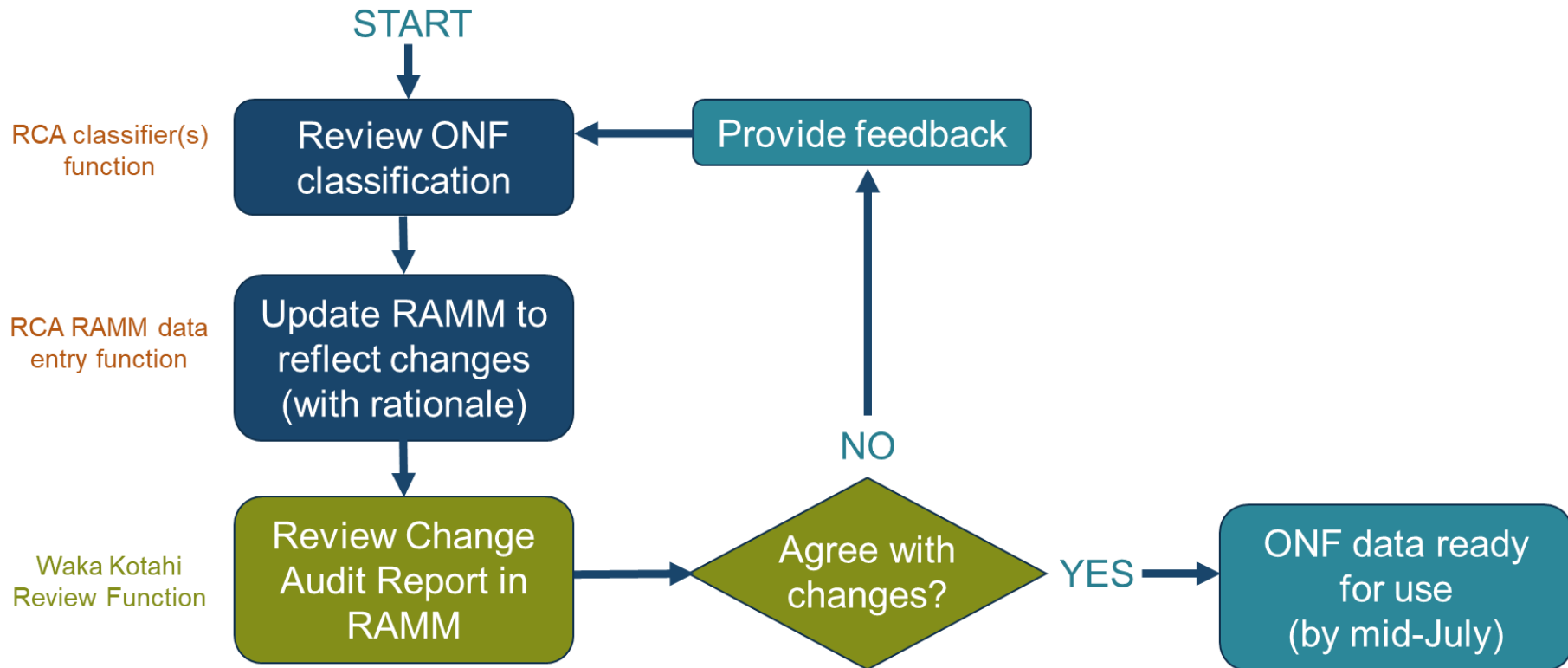
Detail of process

The following high-level process map below provides the key actions required to enable the effective annual review of the ONF current state layer.

The Classification Guidance outlines the need for RCAs to add a note (either in Place, Movement or Category fields) to explain the rationale for making a change to an ONF category over the course of the financial year.

¹ ONF classification of RCA network encompassing the current NLTP period of 3 years.

High-level process map



State Highways (Waka Kotahi):

- **State highway RCA classification functions (review ONF classification)** – System Manager (lead), Network & Journey Manager (support)
- **State highway RCA data entry functions (ONF RAMM updates)** – Network Managers (editors)
- **State highway RCA (review/approve)** – Programme and standards Asset Investment Advisors (approvers), Senior Advisor ONF (support)

Local Roads:

- **Local road RCA classification functions (review ONF classification)** – To be determined by RCA staff
- **Local road RCA Data Entry functions (ONF RAMM updates)** – RCA RAMM road asset data managers/editors/specialists
- **Local Road RCA (Review/Approve)** – Waka Kotahi M&O regional Investment Advisors (approvers)

National ONF support and quality assurance – Senior Advisor ONF, Principal Advisor RP & Asset Management, Road Asset Information Specialist

Practice Guidance

Required Actions	Considerations	Information Required
Review ONF classification	<ul style="list-style-type: none"> • Are there sections of roads/streets without an ONF classification? • Have there been changes to the function of a road, street, or transport corridor? <ul style="list-style-type: none"> ○ Overall Movement or Place rankings/function ○ Street category description, function, or primary attributes ○ Walking, Cycling, Freight, General Traffic, or Public Transport function? • Have Movement and Place classifications been applied consistently across the network? • Are there roads or streets that need to be added or removed? • Does the new classification need to be discussed with other Approved Organisations, or RCA's (e.g. Regional Council for public transport volumes and frequency)? • Are there any duplicate ONF records that need to be removed or edited? 	<ul style="list-style-type: none"> ➤ ONF Detailed Design ➤ ONF Classification guidance ➤ RAMM ONF Current State layer
Update RAMM to reflect changes (with rationale)	<ul style="list-style-type: none"> • Do the changes made align to the ONF detailed design and classification guidance? • Has a rationale been provided in the notes section for each of the changes made? • Notify the Waka Kotahi approver when changes have been made and ready for review. • Agree a method to review, are there a lot of changes and best to discuss these together in a meeting? 	
Review Change Audit Report in RAMM	<ul style="list-style-type: none"> • Do the proposed changes align with the ONF guidance? • Are there any issues or risks with the proposed amendments? • 	<ul style="list-style-type: none"> ➤ RAMM “ONF Change Review” layer
Provide feedback	<ul style="list-style-type: none"> • Is the rationale for the changes not being accepted clear? • Have you provided specific areas for addressing? • Is it clear where additional support and guidance can be sought from in your feedback? 	
ONF data ready for use (by mid-July)	<ul style="list-style-type: none"> • RAMM current state ONF data will be exported into other systems towards the end of July each year, all data needs be reviewed and accepted by mid-July. 	