



# National Speed Limit Register (NSLR) User Guide: Speed Limit Reversals

Land Transport Rule: Setting of Speed Limits 2024

15 January 2025

## **Copyright information**

Copyright ©. This copyright work is licensed under the Creative Commons Attribution 4.0 International licence. In essence, you are free to copy, distribute and adapt the work, as long as you attribute the work to NZ Transport Agency Waka Kotahi (NZTA) and abide by the other licence terms. To view a copy of this licence, visit <http://creativecommons.org/licenses/by/4.0/>.

## **Disclaimer**

NZTA has endeavoured to ensure material in this document is technically accurate and reflects legal requirements. However, the document does not override governing legislation. NZTA does not accept liability for any consequences arising from the use of this document. If the user of this document is unsure whether the material is correct, they should refer directly to the relevant legislation and contact NZTA.

## **More information**

NZ Transport Agency Waka Kotahi

Published 15 January 2025

ISBN No.: 978-1-991311-22-1

If you have further queries, call our contact centre on 0800 699 000 or write to us:

NZ Transport Agency Waka Kotahi  
Private Bag 6995  
Wellington 6141

This document is available on NZTA's website at [www.nzta.govt.nz](http://www.nzta.govt.nz)

# Contents

- 1. **Introduction** .....4
- 2. **Background: reversals**.....4
  - 2.1. Identifying Specified Roads and the options.....4
  - 2.2. Reversals process: .....5
- 3. **Reversal of ‘specified roads’** .....5
  - 3.1. Process for RCAs to modify/create records in the NSLR.....5
  - 3.2. Process for RCAs to have NZTA modify/create records in the NSLR .....7
- 4. **Modifying and creating speed limit records in the NSLR**.....7
- 5. **How to Log in to the NSLR** .....8
- 6. **How to modify speed limit records** .....8
- 7. **How to create a permanent speed limit record** .....9
- 8. **How to create a variable speed limit record** .....10
- 9. **How to delete a speed limit record**.....12

# 1. Introduction

This guide outlines the processes and steps for using the National Speed Limit Register (NSLR) to fulfil obligations under the [Setting of Speed Limit Rule 2024](#) (the Rule) to reverse certain speed limits. It is designed to assist Road Controlling Authorities (RCAs) creating or modifying speed limit records in the NSLR.

RCAs that want assistance to get started on setting speed limit reversals within the NSLR can contact NZTA at [speedmanagementprogramme@nzta.govt.nz](mailto:speedmanagementprogramme@nzta.govt.nz).

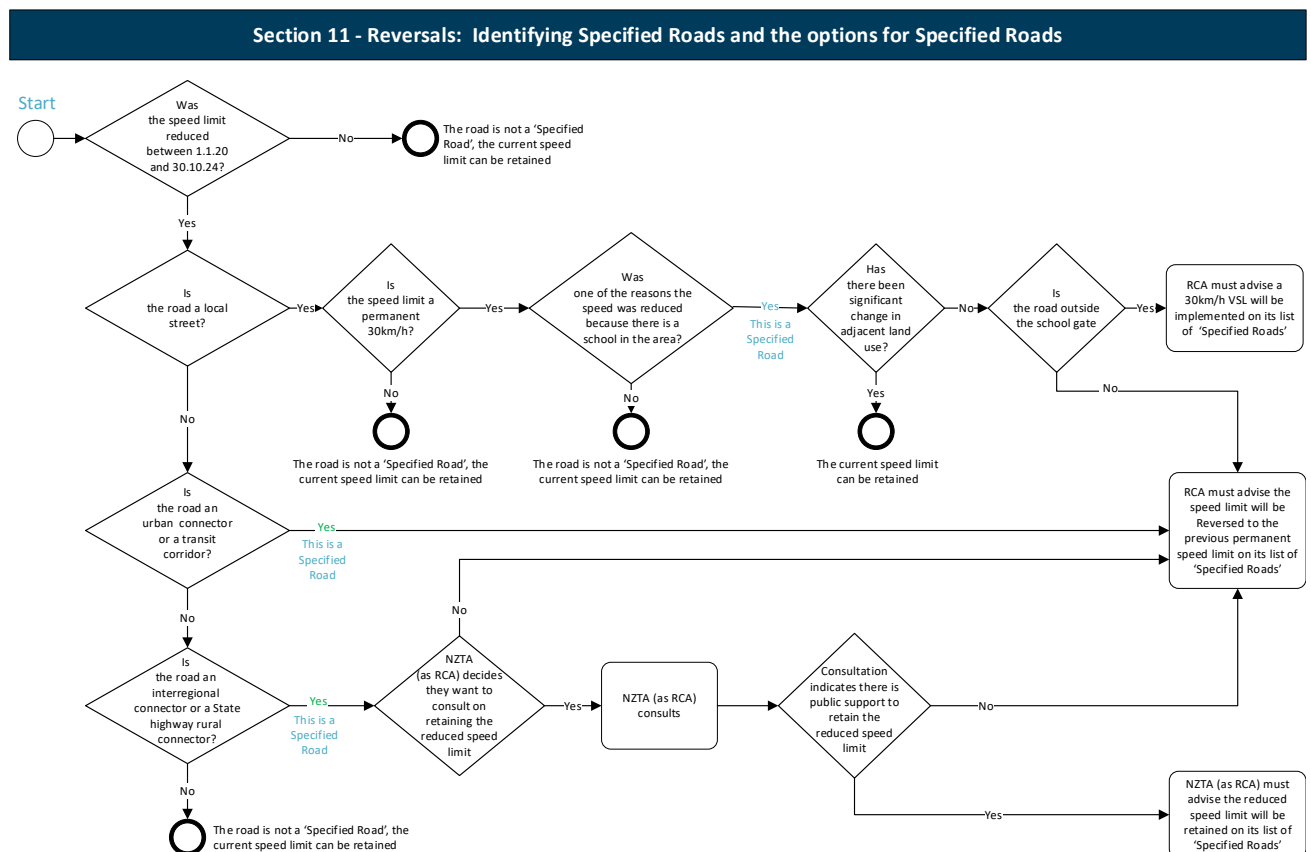
RCAs should refer to [Guidance – Land Transport Rule: Setting of Speed Limits 2024](#) for information on Rule requirements for Reversals.

The [National Speed Limit Register User Guide](#) provides information on using the NSLR. We recommend users familiarise themselves with the [eLearning modules](#).

# 2. Background: reversals

The transitional provisions in section 11 of the Land Transport Rule: Setting of Speed Limits 2024 (the new Rule) outline the requirements to reverse certain speed limits, which requires speed limits reduced since 1 January 2020 on 'specified roads' to be reversed by 1 July 2025.

## 2.1. Identifying Specified Roads and the options



*Note: Specified roads that had a speed reduction between 1.1.20 and 30.10.2024 under clause 12.6 of the Land Transport Rule: Setting of Speed Limits 2022 (which relates to correcting speed limits during the pre-interim period under that Rule) are not in scope for Reversals required by Section 11*

**Figure 1: Identifying Specified Roads and the options**

## 2.2. Reversals process:

1. Create a List of Specified Roads – using this template: [Reversals template](#)
2. RCAs should check their past records of speed limit changes to identify ‘specified roads’ as defined in Section 11 of the Land Transport Rule: Setting of Speed Limits 2024.
3. RCAs need to decide which speed limits were reduced because the reason for setting it (or one of the reasons) was the presence of a school, and which were not.
4. Cost Benefit Disclosure Statements are not required for ‘specified roads’
5. Consultation is not required for ‘specified roads’
6. Send the List of Specified Roads to [speedmanagementprogramme@nzta.govt.nz](mailto:speedmanagementprogramme@nzta.govt.nz)
7. Director of Land Transport approval is not required for ‘specified roads’
8. Modify/Create speed limit records in the NSLR. RCAs can do this, or if the List of Specified Roads is submitted well before 1 May 2025 . NZTA may be able to assist with this process
9. Submit speed limit records in the NSLR by 1 May 2025 – as early as possible
10. NZTA will upload modified and new speed limit records in the NSLR
11. RCAs install signage – roads captured by Section 11 of the Rule, must have speed limits in place by 1 July 2025

## 3. Reversal of ‘specified roads’

### 3.1. Process for RCAs to modify/create records in the NSLR

Reversal speed limits must be submitted RCAs must create or modify speed limit records in the NSLR by 1 May 2025 to comply with the Reversals requirements of Section 11 of the Rule.

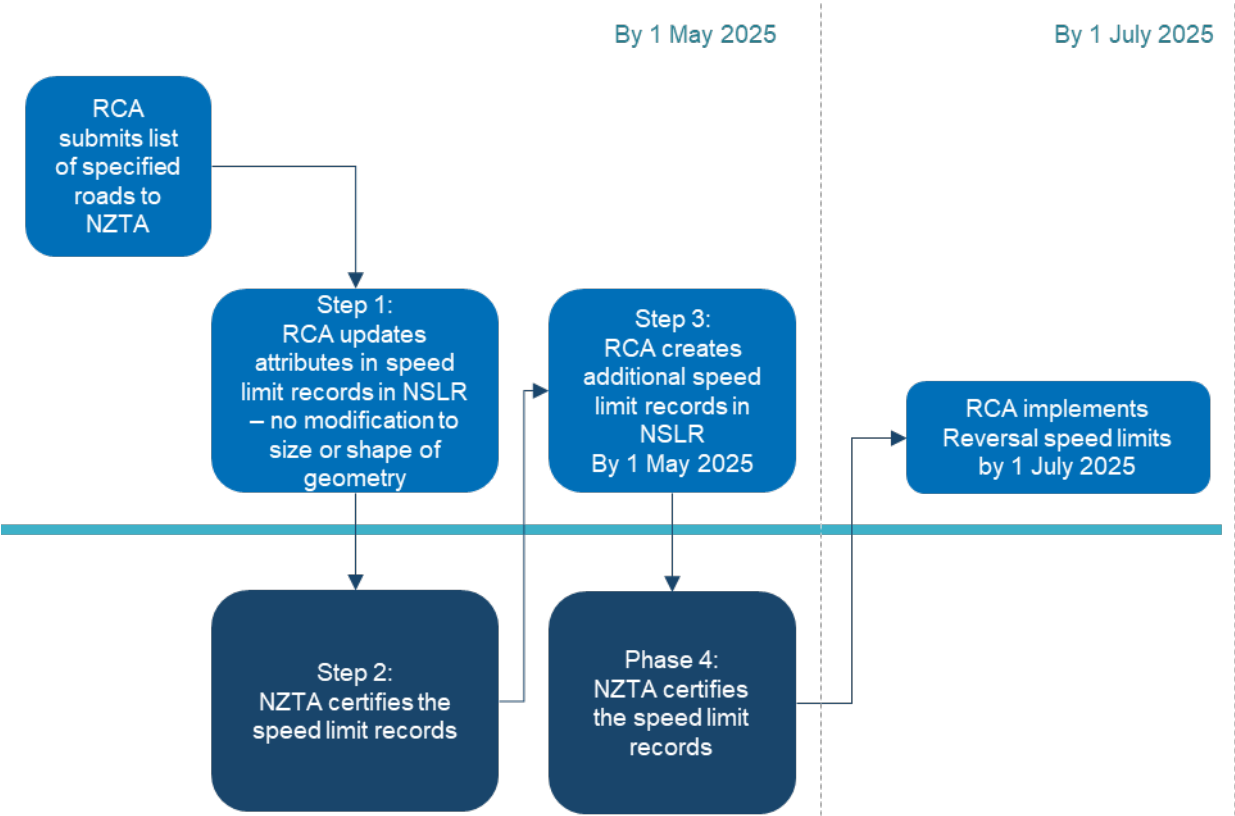
The Rule requires Reversal speed limits to be implemented (signposted, etc) by 1 July 2025; please ensure Reversal speed limit records are submitted at least 10 working days before the speed limit record Start Date.

NZTA (as Regulator) may send back records for correction if any inconsistencies are found.

Reversals were not anticipated when the NSLR was designed. A dedicated process has been developed to facilitate Reversals and reduce the potential for incorrect speed limits to be displayed in the NSLR, the accuracy of which are the responsibility of the RCA.

NZTA (as Regulator) will have a small team available to create and modify speed limit records on behalf of RCAs who submit their lists between February and April 2025. We strongly encourage RCAs to take up this opportunity.

Figure 2, below, is the timeline for the reversals process, if RCAs create or modify the records concerned without assistance from NZTA:



Note: the Rule requires the list of specified roads to be provided by 1 May 2025, however it would be very helpful to NZTA to have the list before speed limit records are submitted in the NSLR. RCAs are responsible for ensuring that speed limit records submitted align with the Rule. NZTA may examine records submitted before certifying and send back to RCA for correction if any inconsistencies are identified.

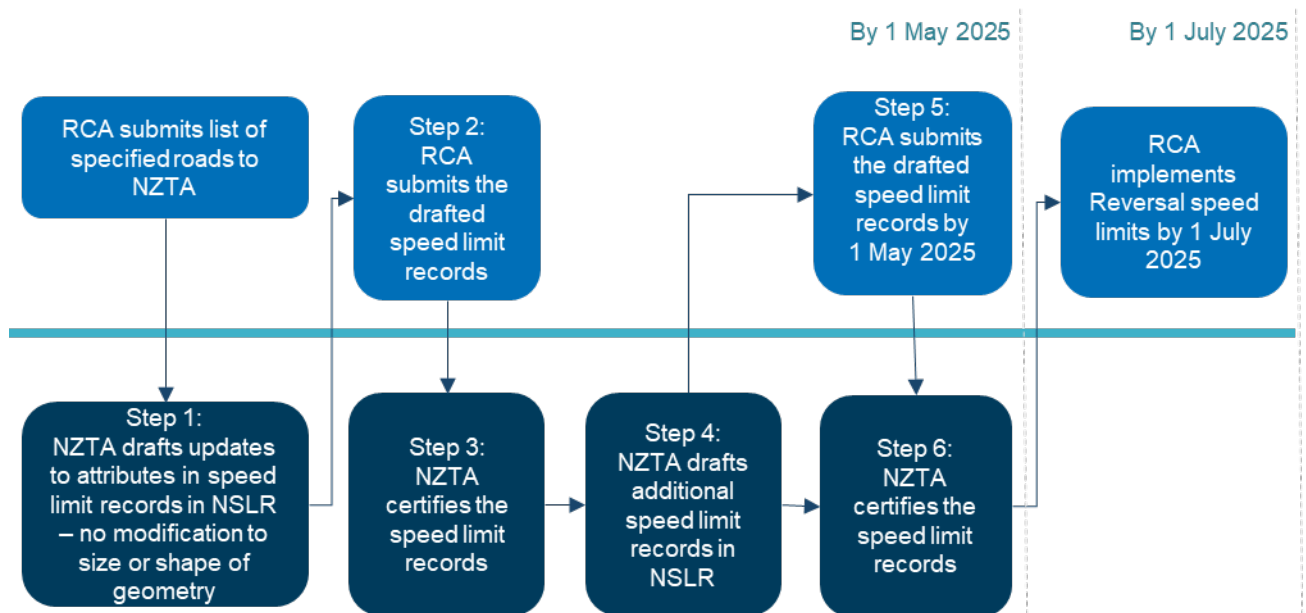
**Figure 2: Timeline for speed limit reversals (assistance not required)**



### 3.2. Process for RCAs to have NZTA modify/create records in the NSLR

NZTA will have a small team available to create and modify speed limit records on behalf of RCAs who submit their lists between February and April 2025. Resource will be allocated on a first-in-first-served basis. Please contact us at [speedmanagementprogramme@nzta.govt.nz](mailto:speedmanagementprogramme@nzta.govt.nz) if you would like more information on how we can assist.

Figure 3, below, is the timeline for the reversals process, where NZTA assists to create or modify records:



Note: the Rule requires the list of specified roads to be provided by 1 May 2025, however it would be very helpful to NZTA to have the list before speed limit records are submitted in the NSLR. RCAs are responsible for ensuring that speed limit records submitted align with the Rule. NZTA may examine records submitted before certifying and send back to RCA for correction if any inconsistencies are identified.

Figure 3: Timeline for speed limit reversals (assistance required)

## 4. Modifying and creating speed limit records in the NSLR

The recommended method for Reversal of 'specified roads':

1. Update the attributes of the relevant speed limit record:
  - a. change the speed limit of the whole geometry back to the permanent speed limit in force before 1 January 2020 – DO NOT modify the existing geometry size or shape
  - b. enter the implementation start date
  - c. enter the legal reference 'Reversals – SOSL Rule 2024'
  - d. submit the speed limit record
2. Wait until the submitted speed limit record is certified.  
DO NOT submit new speed limit records which overlap a submitted record until the speed limit is certified.
3. Create any additional speed limit record/s required, eg:
  - o variable speed limits outside the school gate,

- roads for which speed limits which are being retained due to a significant change in surrounding land use (since 1 Jan 2020) if they were part of a larger geometry

## 5. How to Log in to the NSLR

Please refer to the [National Speed Limit Register User Guide](#).

## 6. How to modify speed limit records

Modify a speed limit record when you need to change the attributes of a record.

*Note: Do not use Modify speed limit records when increasing or decreasing a geometry, create a new speed limit record.*

1. Locate the speed limit record, by clicking on the speed limit area on the map to display the speed limit record details
2. Click (Edit record icon) at the bottom of the panel. The Edit Speed Limit Record panel appears on the left, and 'Draft Record Created' appears at the bottom right of the screen
3. Update the speed limit record details as required.

Field	Description
Speed management plan	The legal reference 'Reversals – SOSL Rule 2024' has been set up for RCAs to use for Reversals.
Speed limit record name	This should stay the same, it will be the unique name which was assigned to speed limit record. ( <a href="#">See NSLR user guide for speed limit record naming conventions</a> )
Speed category	Select Permanent.
Applies to	Select from the drop down
Speed value	Select speed limit in km/h, eg 50 km/h
Start date	Enter the applicable Start Date

4. No change is required to the geometry, so click **Next**
5. NSLR will search for overlaps, then show the current state geometry and future state geometry. We want to overwrite this record, so click **Save**.
6. Review the 'Changes detected' information and click **Continue**
7. Select the Save details, either:
  - Save as draft – record is being drafted
  - Save as draft submission – record has been drafted and is ready to be submitted
  - Submit record for certification – submit record (only available for RCA Speed Administrator).
8. Click **Save**





## 7. How to create a permanent speed limit record

A permanent speed limit is a speed limit that is in force except when a seasonal, variable, temporary - emergency or other temporary speed limit is in force.

1. Select **Dashboard > Create new record**.
2. Complete the following information:

Field	Description
Speed management plan	The legal reference 'Reversals – SOSL Rule 2024' has been set up for RCAs to use for Reversals.
Speed limit record name	Name assigned to speed limit record. Must be unique ( <a href="#">See NSLR user guide for speed limit record naming conventions</a> )
Speed category	Select 'Permanent'.
Road outside a school?	Select the checkbox if speed limit is in a school area.
Speed value	Select speed limit in km/h, eg 50 km/h
Start date	Date the speed limit applicable from.

3. Click **Next**.
4. Add one or more speed areas. ([See NSLR user guide for how to draw polygons to define speed areas](#))
5. Maps of the current and future state display and a message advising whether overlaps detected or not.
  - A  green flag icon in the Valid column displays if no warnings or issues have been detected.
  - An  orange flag icon in the Valid column displays if there is a warning about things you need to check. Click on the orange flag to see the details. An example is where the new record has the same speed value and category as the overlapped record.
6. If overlapping speed areas are detected, review the information displayed, for each speed area:
  - For the Action dropdown field confirm that you want to **Overwrite <existing speed limit record with new speed limit record>**. If not, select **Do not overwrite <existing speed limit record>**.

If the system has incorrectly identified an intersection where there should not be one, you should change the **Structure** field to **None**. The **Action** field will automatically change to **Do not overwrite <existing speed limit record>**.

- Select the **Structure** dropdown arrow if relevant, and select either:
  - Ignore
  - Intersection
  - Overpass
  - Underpass.

Click **Save**. A confirmation message displays advising what changes have been detected. Review the information and click **Continue**.

7. If overlapping speed areas are not detected, click **Save**.




8. Select the **Save details**, either:
  - Save as draft – record is being drafted
  - Save as draft submission – record has been drafted and is ready to be submitted
  - Submit record for certification – submit record (only available for RCA Speed Administrator).
9. If you are submitting, select the checkbox to confirm you have followed the correct speed management practices and have the authority to submit the information.
10. Click **Save**

## 8. How to create a variable speed limit record

A variable speed limit is where the speed limit changes under certain conditions (excluding seasonal limits), eg due to the presence of a school, the speed limit is different at certain times of the day corresponding to school activity.

1. Select **Dashboard > Create new record**.
2. Complete the following information:

Field	Description
Speed management plan	The legal reference 'Reversals – SOSL Rule 2024' has been set up for RCAs to use for Reversals.
Speed limit record name	Name assigned to speed limit record. Must be unique ( <a href="#">See NSLR user guide for speed limit record naming conventions</a> )
Speed category	Select 'Variable'
Reason	Select the reason for the variable speed limit. Options are: <ul style="list-style-type: none"> <li>• Different numbers and types of road users or different traffic movements</li> <li>• The effects of changing traffic volumes, including to ease congestion</li> <li>• A crash risk posed by turning or crossing traffic</li> <li>• Changing climatic conditions</li> <li>• The presence of a school</li> <li>• The presence of a marae</li> <li>• Other – use if one of the other categories does not apply. If selected you need Director's approval.</li> </ul>
Corridor speed value	Select the speed limit generally applying to the corridor, eg 50km/h.
Director approval URL	This field displays if 'Other'.
Start date	Date speed limit applicable from.
Variable speed values	Select the variable speed limit/s (other speed limits besides the corridor speed limit that may apply) in km/h, eg 30km/h. These may be single, eg schools, or multiple eg managed motorways. A blue line appears to the left of a selected speed limit.  Note: The options presented are based on the 'Reason' and 'Corridor' speed value selected, eg the valid values for school variable speed limits are 60km/h or below, the only valid value for marae where the corridor speed value is 50km/h is 30km/h.
Operational description	This field displays if 'the presence of a school' is selected in the reason field. Some standard text defaults which can be edited as required. Enter the times of operation here.

3. Click **Next**.
4. Add one or more speed areas. ([See NSLR user guide for how to draw polygons to define speed areas](#))
5. Click **Add clarification** to add additional information to a speed limit record. Click on the map where the clarification is to be added. Enter the clarification information, eg in response to a question from NZTA.
6. Click  (Save icon). Note: You can repeat to enter multiple clarifications. You can also move the clarification or delete it if no longer required.
7. Click **Next**.
8. Maps of the current and future state display and a message advising whether overlaps detected or not.
  - A  green flag icon in the **Valid** column displays if no warnings or issues have been detected.
  - An  orange flag icon in the Valid column displays if there is a warning about things you need to check. Click on the orange flag to see the details. An example is where the new record has the same speed value and category as the overlapped record.
9. If overlapping speed areas are detected, review the information displayed.
 

For each speed area:

  - For the Action dropdown field confirm that you want to Overwrite <existing speed limit record with new speed limit record>. If not, select Do not overwrite <existing speed limit record>.

If the system has identified an intersection the user can change the **Structure** field to **None** by selecting “**Ignore**” from the dropdown menu.


After ignoring, the intersection area will be removed. This area will now be part of the main speed area with the structure type **None**.
10. See Overpasses/underpasses and intersections section of the [NSLR user guide](#) for details of how overpasses/underpasses and intersections are dealt with.
 

Click **Save**. A confirmation message displays advising what changes have been detected. Click **Continue**.
11. If overlapping speed areas are not detected, click **Save**.
12. Select the Save details, either:
  - Save as draft – record is being drafted
  - Save as draft submission – record has been drafted and is ready to be submitted
  - Submit record for certification – submit record (only available for RCA Speed Administrator).
13. If you are submitting, select the checkbox to confirm you have followed the correct speed management practices and have the authority to submit the information.
14. Click **Save**.

## 9. How to delete a speed limit record

When a speed limit record is in Draft, or Draft submission status it can be deleted. Once certified, a speed limit record cannot be deleted.

*Note: If an emergency or seasonal speed limit is no longer required, do not delete it, modify the record and update the end date.*

1. Locate the speed limit record.
2. Click the  (Modify this record) icon for the speed limit record. The Edit speed limit record panel displays.
3. Click **Delete** record. A message displays asking you to confirm.
4. Click **Yes**. A message displays advising the speed limit record was deleted successfully.