



# Waimate District Council

---

## Interim Speed Management Plan

December 2023

---

|                            |  |
|----------------------------|--|
| Community consultation     | <b>12 October 2023 to 13 November 2023</b> |
| <b>Approved By Council</b> | 12 December 2023.                          |

# INTERIM SPEED MANAGEMENT PLAN

## Key Focus Area 1 - School speed limits

The first key focus area of this draft plan is to reduce the speed limits around schools. We propose to do this by introducing a 30km/h permanent speed limit for most schools in the district. A lower speed limit decreases the chance of crashes occurring and reduces the injury severity if it were to happen. This will reduce the risk for the students travelling to and from school. Research shows that speed limits in school zones are most effective between 300-500m long. Drivers tend to slow down if the zone is between these lengths. The maps we have prepared show what this would look like for all schools in the district, however, the interim plan will enable the actual zones to be adjusted by Council officers if required.

### Schools not included in the plan

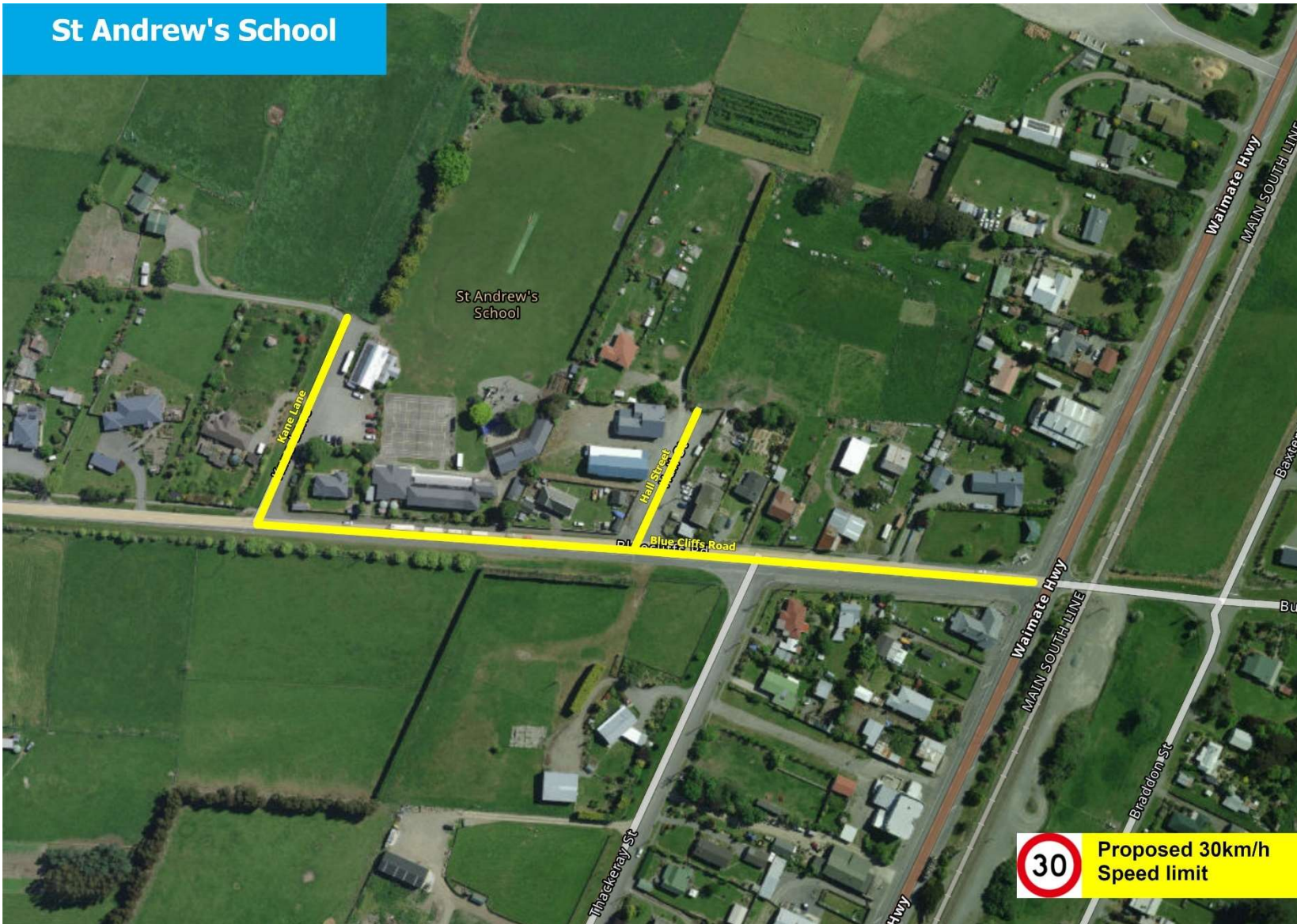
**Waituna School** already has large signs advising 40km/h when children are present. This seems to be working satisfactorily. This would fall into the 60km/h speed category with the new definitions on speed limits. If a 30km/h were applied, it would have to be a variable sign.

**St Patrick's School** is not included in the interim plan due to the low number of students in attendance, and the carpark area is set away from the road carriageway.

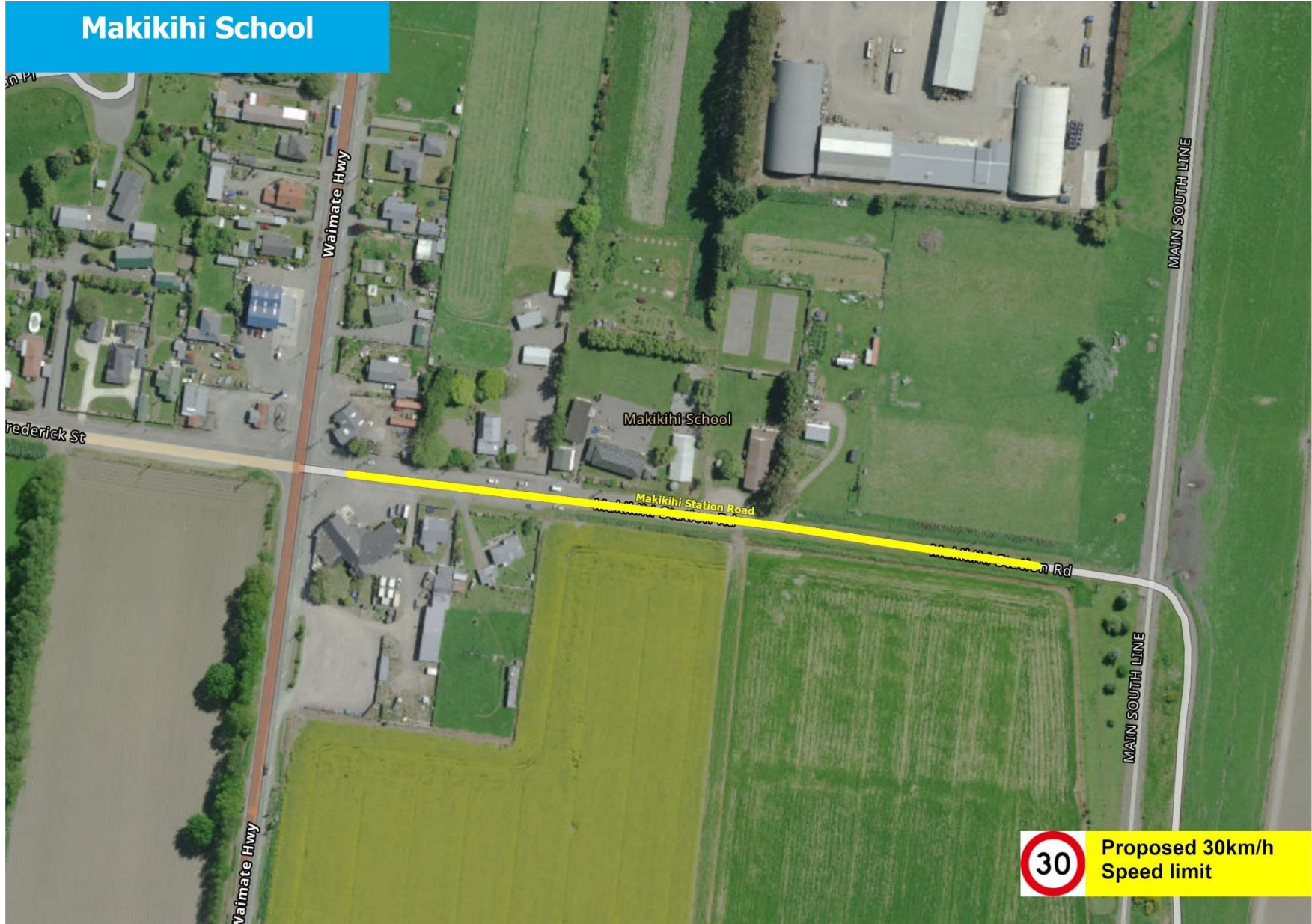
**Waihao Downs School** is on State Highway 82 and the speed limits are set by Waka Kotahi NZ Transport Agency.



The following schools are proposed to be in Category 1 with 30km/h permanent speed limit treatment:



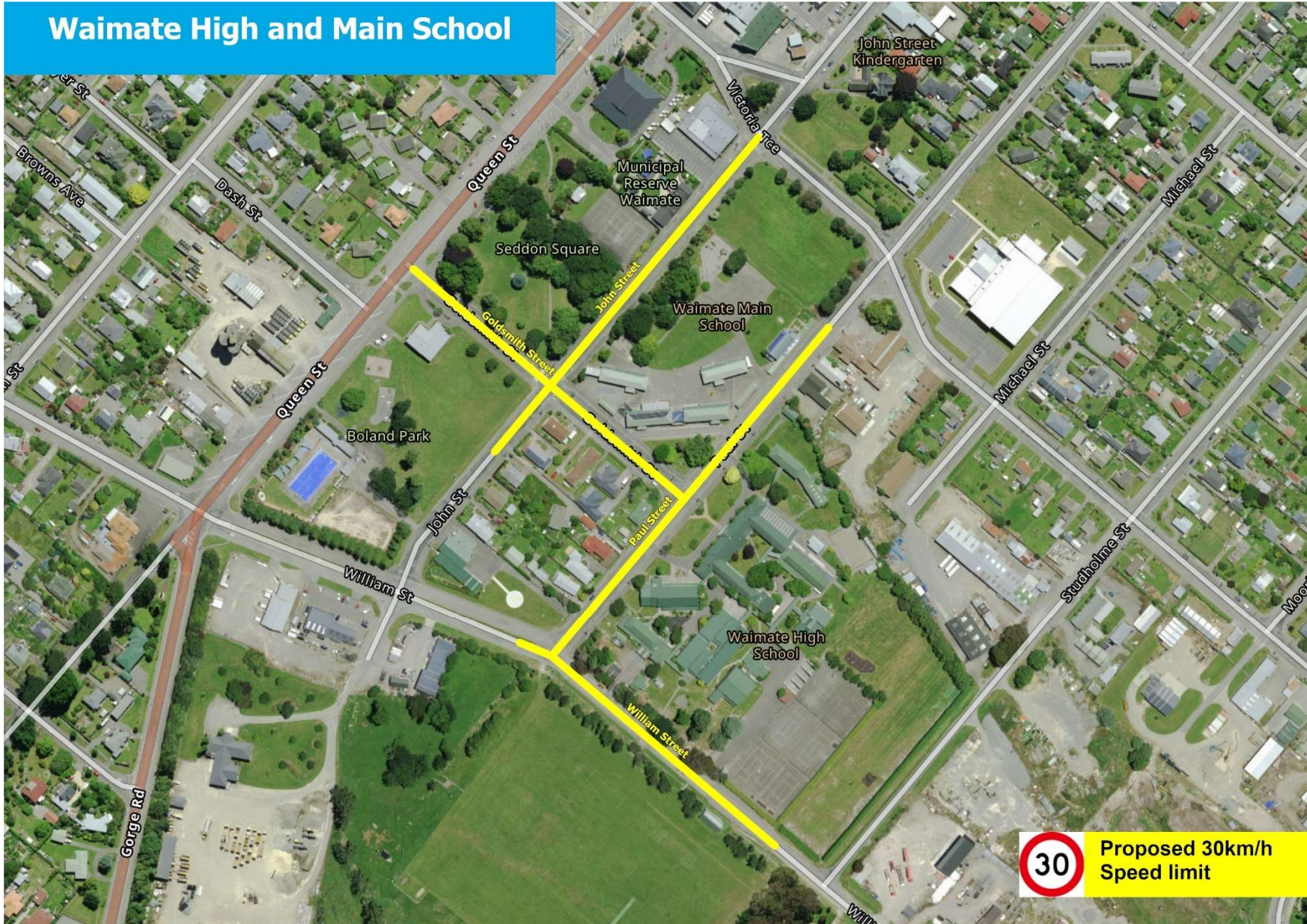
# Makikihi School



# Centennial School

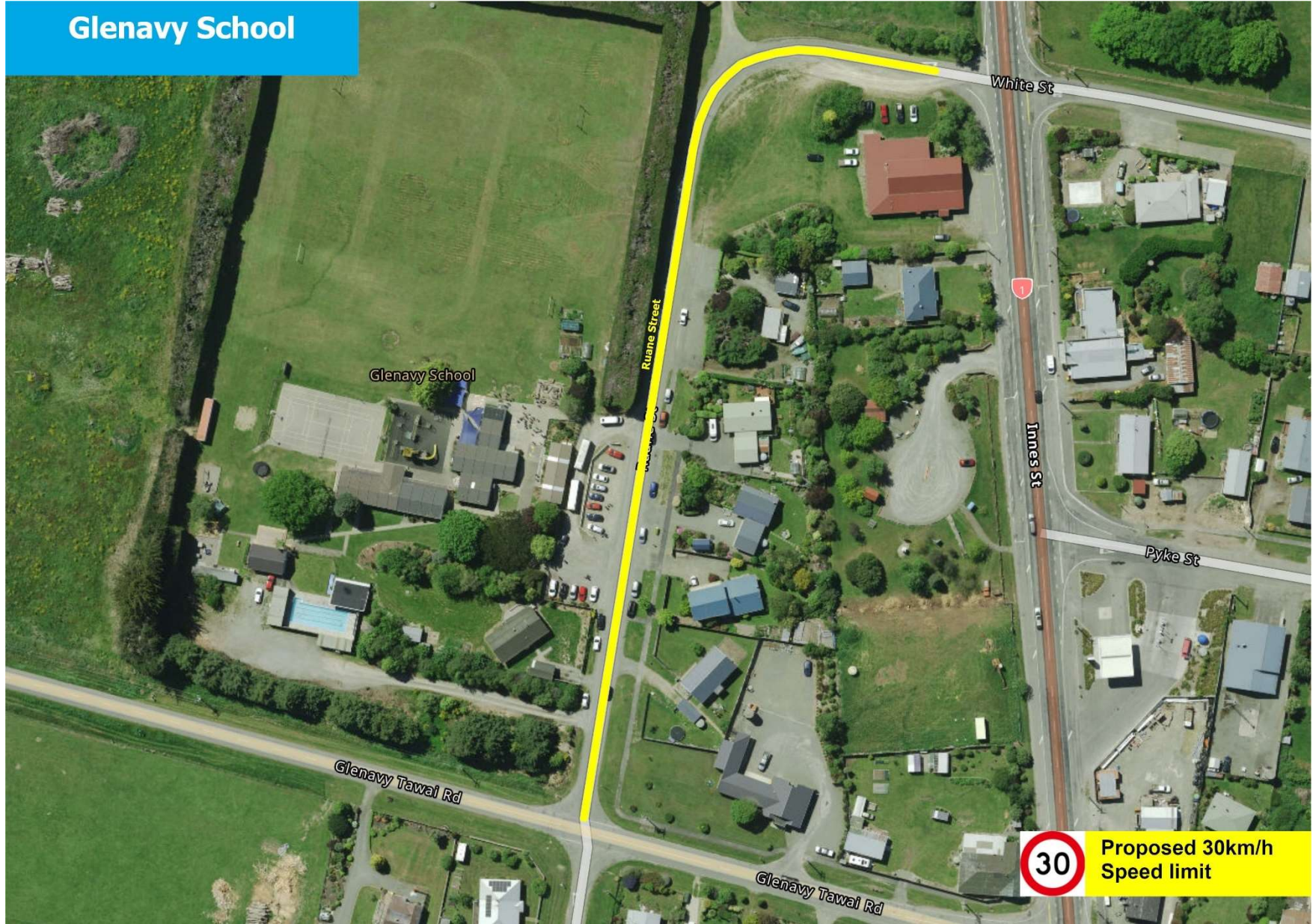


# Waimate High and Main School



**30** Proposed 30km/h  
Speed limit

# Glenavy School





## Key Focus Area 2

### Recreational and industrial areas

The plan also includes a key focus area to manage the speed on roads in the urban fringe, and high recreational use and industrial zones. This is to cater for development that has already occurred. The roads planned in the interim plan are:

#### **Speed Limit 60km/h**

##### **Urban fringe**

Mill Road: Garland Bridge to Boyes Road.

This narrow-sealed road, with limited visibility from private accessways.

#### **Speed Limit 40km/h**

##### **Recreational**

Route to White Horse Monument and Centrewood Park recreational area:

Parkers Bush Road and Centre Wood Park Road. These roads have poor visibility, a narrow width and poor alignment and steep gradient.

##### **Industrial**

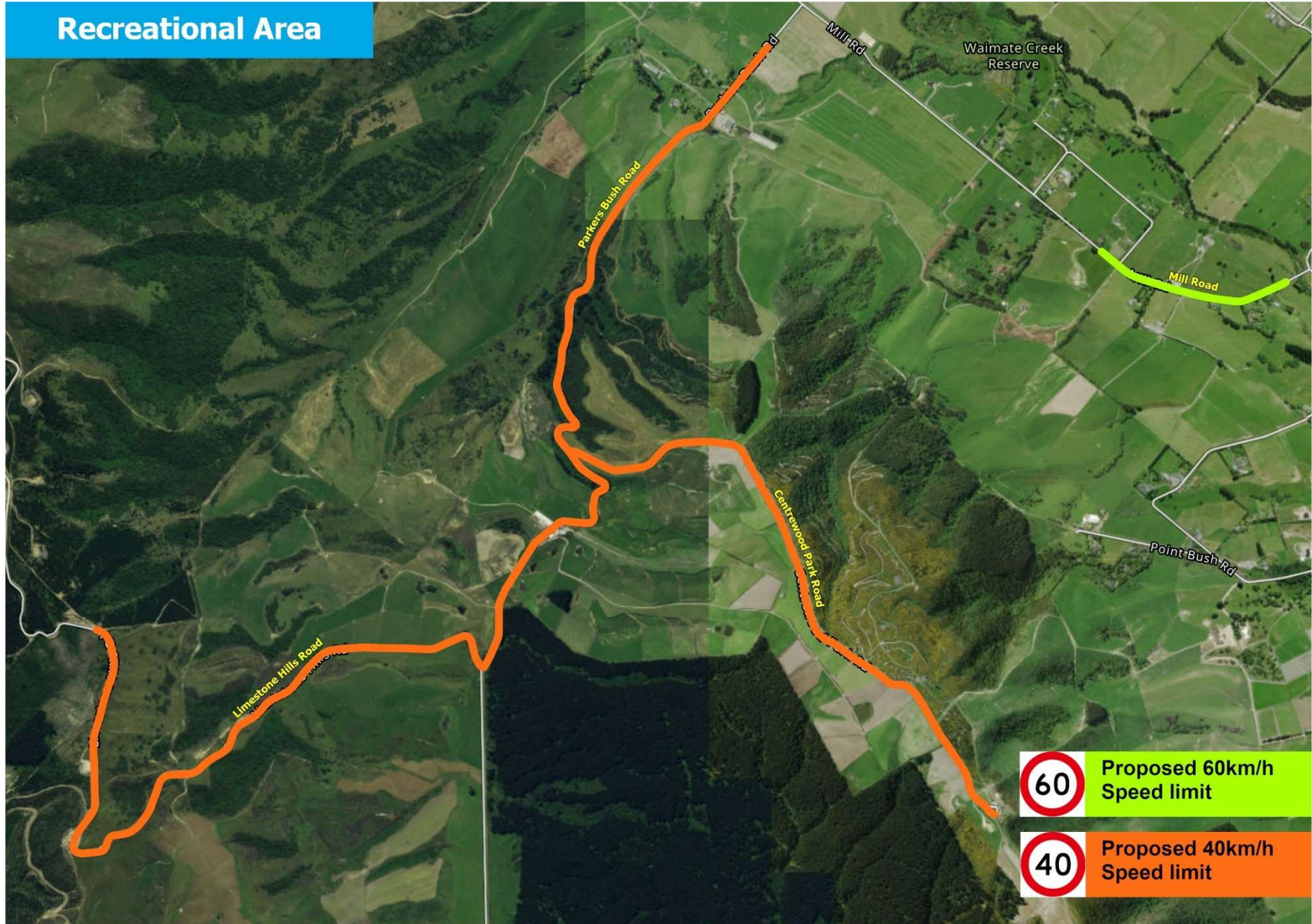
Industrial area: Oceania Dairy Factory

Cooneys Road. Large amount of Heavy turning traffic.

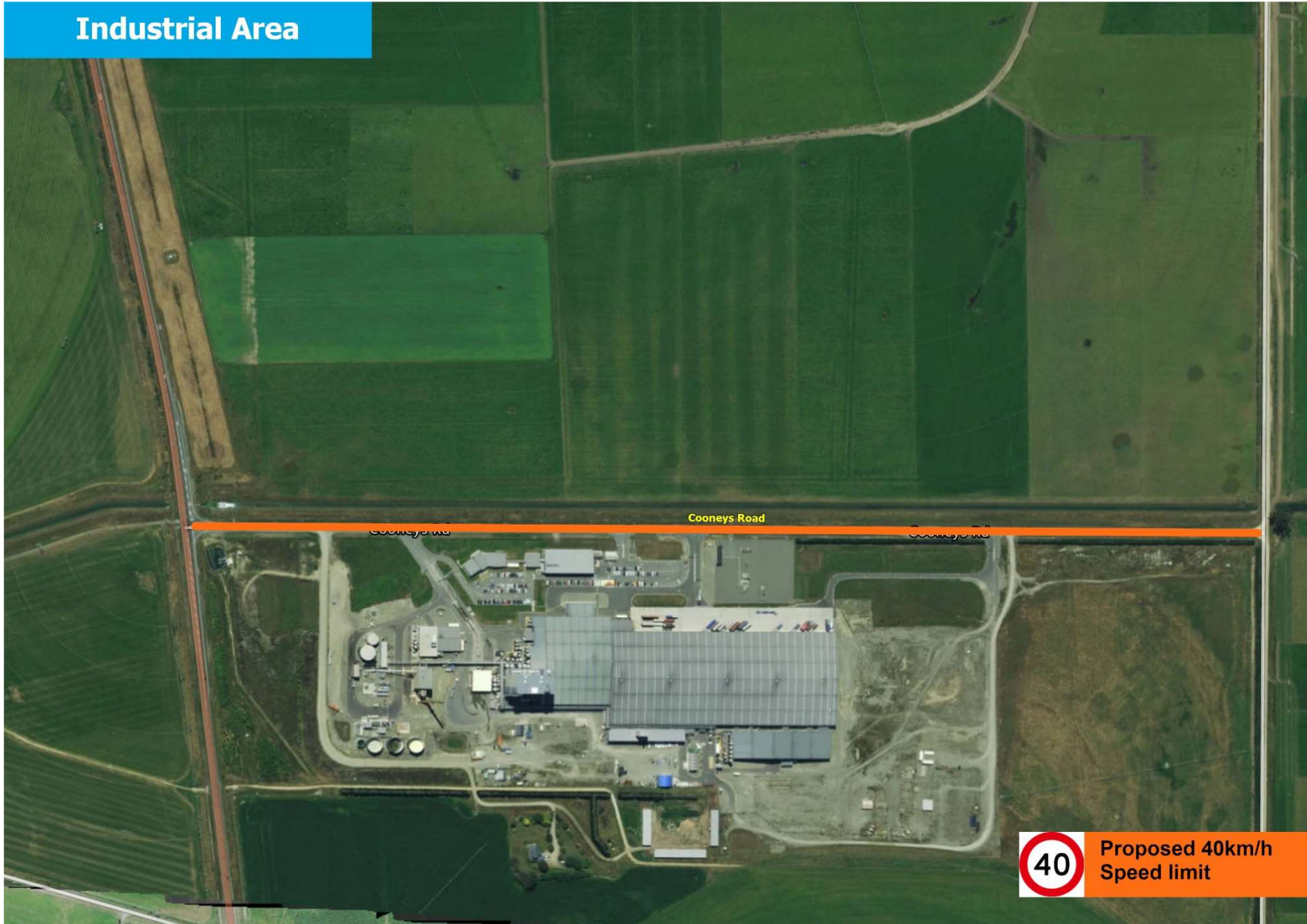
Industrial area: Waimate Forrest

Limestone Hills. This road has poor visibility, a narrow width and poor alignment and steep gradient.

# Recreational Area



**Industrial Area**

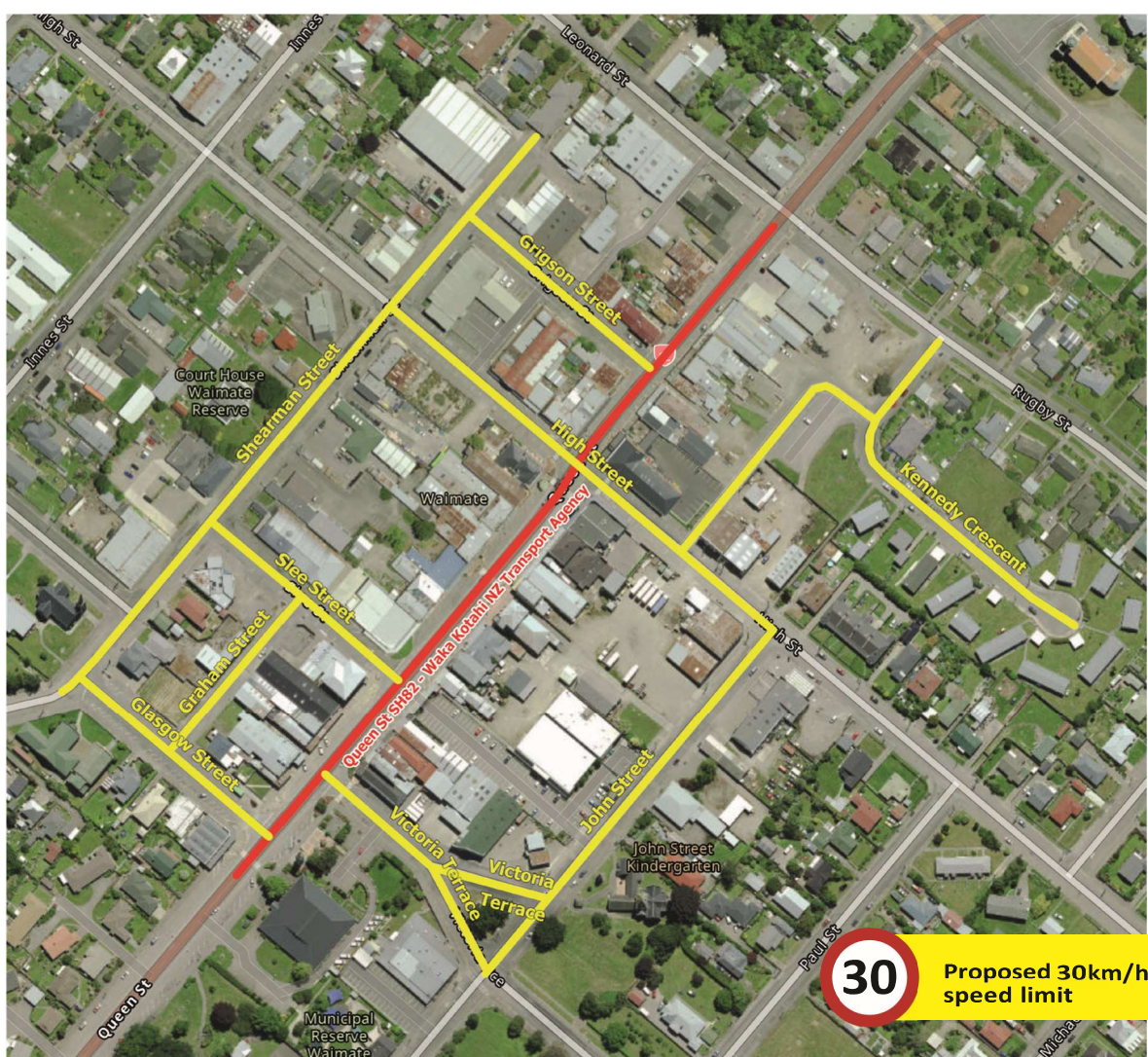


## Key Focus Area 3

### Waimate central business area streets

The plan includes a key focus area of reducing speed in the Waimate central business area. This reduces the risk to active users (like walkers, cyclists, and scooter users) on the road and promotes a safer environment. The central business area will have a speed reduction applied of 30km/h. Council considers the following reasons to justify this:

- Lower speeds protect everyone especially vulnerable people like children, cyclists, pedestrians, the elderly and people with disabilities.
- Vehicles back into the traffic flow from angle parking.
- There is significant reduction in harm in crashes when the speed is reduced to 30km/h.
- A large amount of heavy vehicle traffic using Queen Street, including dairy tankers, logging trucks and stock trucks. Reducing the speed of these vehicles significantly lowers the distance that these vehicles take to stop.
- Contributes to a pleasant environment for users with slower traffic, less noise and dust.



## Key Focus State Highways

### Advocating for changes to speed limits on state highways in our District

Council is unable to decide changes to speed limits on state highways because these are the authority of Waka Kotahi NZ Transport Agency. Council does recognise, however, the need for state highway speed limits to support safety in our communities and be consistent with the local road network. To that effect, Council has and will continue to lobby Waka Kotahi NZ Transport Agency for the following speed limit changes in the Waimate District:

| Area                             | St Andrews               | Makikihi                 | Queen Street Waimate<br>(From Rugby Street to Local<br>Government Centre, Waimate) |
|----------------------------------|--------------------------|--------------------------|--|
| State Highway                    | 1                        | 1                        | 82   |
| Current speed limit              | 70km/h                   | 70km/h                   | 50km/h   |
| Proposed speed limit as per plan | No change as not in plan | No change as not in plan | No change as not in plan   |
| WDC preferred speed limit        | 60km/h                   | 60km/h                   | 30km/h   |



ate

EV  
350 m  
ON  
LEFT

ESTABLISHED 1906  
THE  
Waimate  
Pizzas  
Ales  
Coffees



125 Queen Street, Waimate 7924  
PO Box 122, Waimate 7960  
Phone: 03 689 0000  
E-mail: [council@waimatedc.govt.nz](mailto:council@waimatedc.govt.nz)  
Web: [waimatedc.govt.nz](http://waimatedc.govt.nz)

