

08 May 2023

Director of Land Transport
Kane.patena@nzta.govt.nz
Private Bag 6995
Marion Square
Wellington 6141
New Zealand

Dear Sir/Madam,

Director approval for speed changes – State Highway 10 Awanui to Pukewhai Road, variable speed limits: Kareponia & Mahimaru marae, Northland

Waka Kotahi as Road Controlling Authority ('RCA') respectfully requests that the Director of Land Transport approves the setting of variable speed limits on SH10 adjacent to Kareponia and Mahimaru marae, located to the east of Awanui (shown in the map in **Attachment A** to this letter) in accordance with Clause 2.6(2)(a) of the Land Transport Rule: Setting of Speed Limits 2022 (the Rule).

Background

Waka Kotahi implemented permanent speed limits on this section of State Highway 10 in late 2021. Consequential legislative changes enabled Waka Kotahi (RCA) to implement variable speed limits for marae and provided for traffic control devices to enable such variable speed limits.

Waka Kotahi undertook the speed review for SH10 Kareponia and Mahimaru marae in accordance with the Land Transport Rule: Setting of Speed Limits 2017 ('2017 Rule'). The changes include

- SH10 - a variable 60km/h speed limit at Kareponia marae
- SH10 – a variable 30km/h speed limit at Kareponia marae and urupa
- SH10 - a variable 60km/h speed limit at Mahimaru marae

Waka Kotahi understands that during the interim period of the Rule speed limits can be set in accordance with the clause 2.6 process for changes in advance of a new plan (by way of Schedule 3, clause 12.8) or in accordance with a modified 2017 rule process under Schedule 3, clause 12.9.

Matters for Approval

This review completed pre-implementation, consultation and internal approval stages on the proposed new speed limits prior to the new Rule being enacted. However, Waka Kotahi has not yet made a bylaw or a land transport record to legalise the approved speed limit changes. Although this could be included in a future speed management plan, the timeframes involved would also delay implementing safe speed limits on this corridor.

Waka Kotahi considers that the requirements for clause 2.6 have also been met. In particular:

- For clause 2.6(3)(a) Waka Kotahi took into account the guidance and information developed and maintained by Waka Kotahi (Agency) under clauses 3.14 and 3.15 by using Megamaps (Edition 2) and the Speed management Guide Road to Zero Edition for development of the technical aspects.
- For clause 2.6(3)(b) Waka Kotahi assessed the speed limits of the adjoining roads and considered the impact of the speed change and received feedback from adjacent RCAs, as relevant.

- For clause 2.6(4) Waka Kotahi considers that there is a good reason for the proposed speed limit to be set before the next plan is published as the review had been predominantly carried out under the 2017 rule and the timeframes involved in following an (interim) speed management plan would delay implementing safe speed limits on this corridor.
- For clause 2.6(6) Waka Kotahi undertook consultation that generally aligns with the requirements of clause 3.9. The extent and nature of the consultation undertaken is detailed in the Speed Review Report (**Attachment B**). Notably:
 - The consultation period was at least four weeks (23rd November to 20th December 2020)
 - Consultation with Māori commenced early in the pre-engagement phase and continued throughout the development of the review (including formal consultation phases), through to the development of the proposed VSL solution and to the present; with representatives of the Mahimaru and Kareponia marae committees and communities
 - The consultation was undertaken in accord with Waka Kotahi (RCA) best practice and is deemed to be a reasonably practicable approach under the requirements of the 2017 Rule at the time of consultation.
- For clause 2.6 (7) Waka Kotahi considered consultation submissions received.

Attachment B to this letter is a copy of the approved and signed Speed Review Report and its supporting documents which record the process undertaken for this speed limit change.

If Waka Kotahi receives your approval for setting the speed limit pursuant to Clause 2.6, the speed change process will be completed in accordance with that Clause, including the creation and submission of a land transport record of the speed change and publishing online the information required under clause 2.6(8).

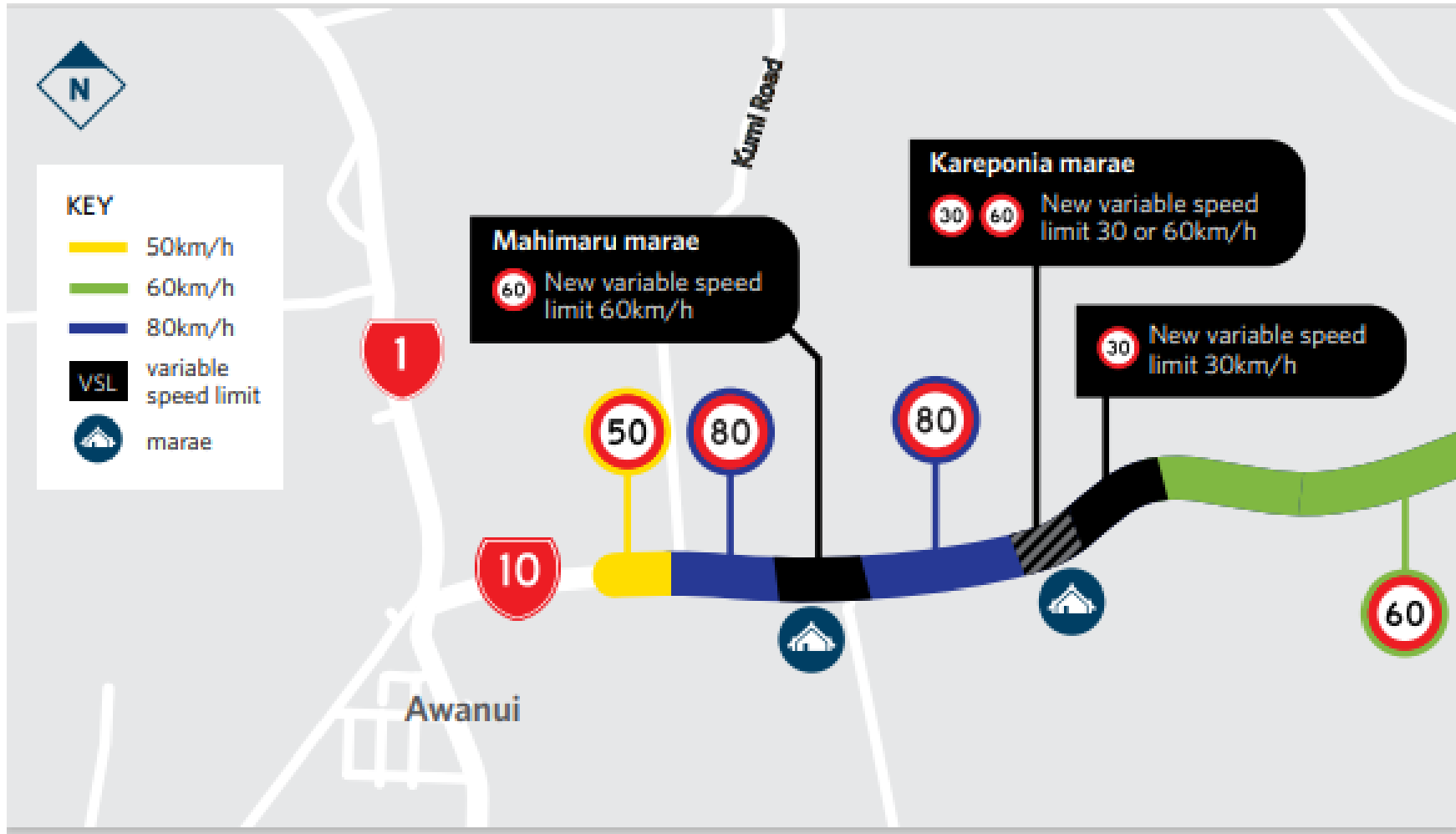
I appreciate your consideration in relation to the SH10 Awanui to Pukewhai Road variable speed limits at Mahimaru and Kareponia marae speed limit approval. Please contact me if you wish to discuss any aspect of this letter or require any further information.

Yours truly,



Vanessa Browne
National Manager – Programme and Standards

Attachment A



Attachment B

Link to Speed Review Report save in Infohub - [Link](#)