



23 April 2015

Brigitte Dunbar

Environmental Officer
SH16 Causeway Upgrade Project
Te Atatu Peninsula
PO Box 68651, Newton, Auckland 1010

<mailto:brigitte.dunbar@SH16causeway.co.nz>

Dear Brigitte

Monthly Causeway Pest Control Report, April 2015

From April through to September, pest control checks will now be carried out on a monthly basis. The check for this month took place on 21 April. The results are summarised in Table 1. The six monthly pest monitor was also carried out this month.

Baiting

The total amount of bait consumed at each station over April can be seen in Figure 1. In total, 1,580g of bait was consumed over this period. This was all brodifacoum bait (Trade name – Final) that had been placed in March in response to the high rodent activity observed towards the end of the month.

Trapping

Only two rats were caught in the traps this month. The locations of these can be seen in Figure 2.

Table 1: Results pest control visit carried out in April 2015

Pest Control Visit Date	Total Bait Take	Total Trap Catch
April 21 2015	1580g brodifacoum	2 x Rat

Monitoring

Ink tracking cards baited with peanut butter were placed out on 21 April inside the existing tracking tunnels and collected on 22 April. Results can be seen in Table 2 below.

Table 2: Monitoring results April 2015

Species	Cards Marked (out of 7)	Tracking Index
Rat	0	0%
Mouse	5	71%
Stoat	0	0%

Discussion

Although the bait consumed this month (1,580g) is far lower than that observed last month (5,418g), bait take rates are difficult to compare during the transition from weekly to monthly pest control checks. This makes any rodent population trends difficult to predict using bait take results alone.

Monthly results for trap catch are easier to compare to weekly results as the bait used is viable for longer periods of time and the traps are able to continue working if nothing has been caught yet. The number of rats caught from the end of the March has only been two (Table 1). This could be used as an indicator of a decline in rat numbers. If the rat population was still as high as that observed in March, we would expect a higher trap catch than that observed.

A decline in rat numbers is also supported by the monitoring results (Table 2) with the tracking cards not displaying any rat activity and a high incidence of mouse activity. High mouse activity is often a result of effective rat control as there are more resources available and less predation by rats.

We can be confident therefore that our pest control programme has been effective in keeping the rat population under control following the high activity observed from the end of February and throughout March.

No stoat activity was detected in the tracking tunnels but this can be expected as the methodology followed from the pest management plan by BioResearches is not designed for stoat detection.

Please contact me if you require more information or have any questions.

Kind regards,



Joel Leong | Ecological Restoration & Consultancy Support
Ph: 09 828 4035 | Fax: 09 828 4036 | Mob: 021 726 239
Te Ngahere (2009) Ltd, PO Box 71109, Auckland 1348
www.te-ngahere.co.nz

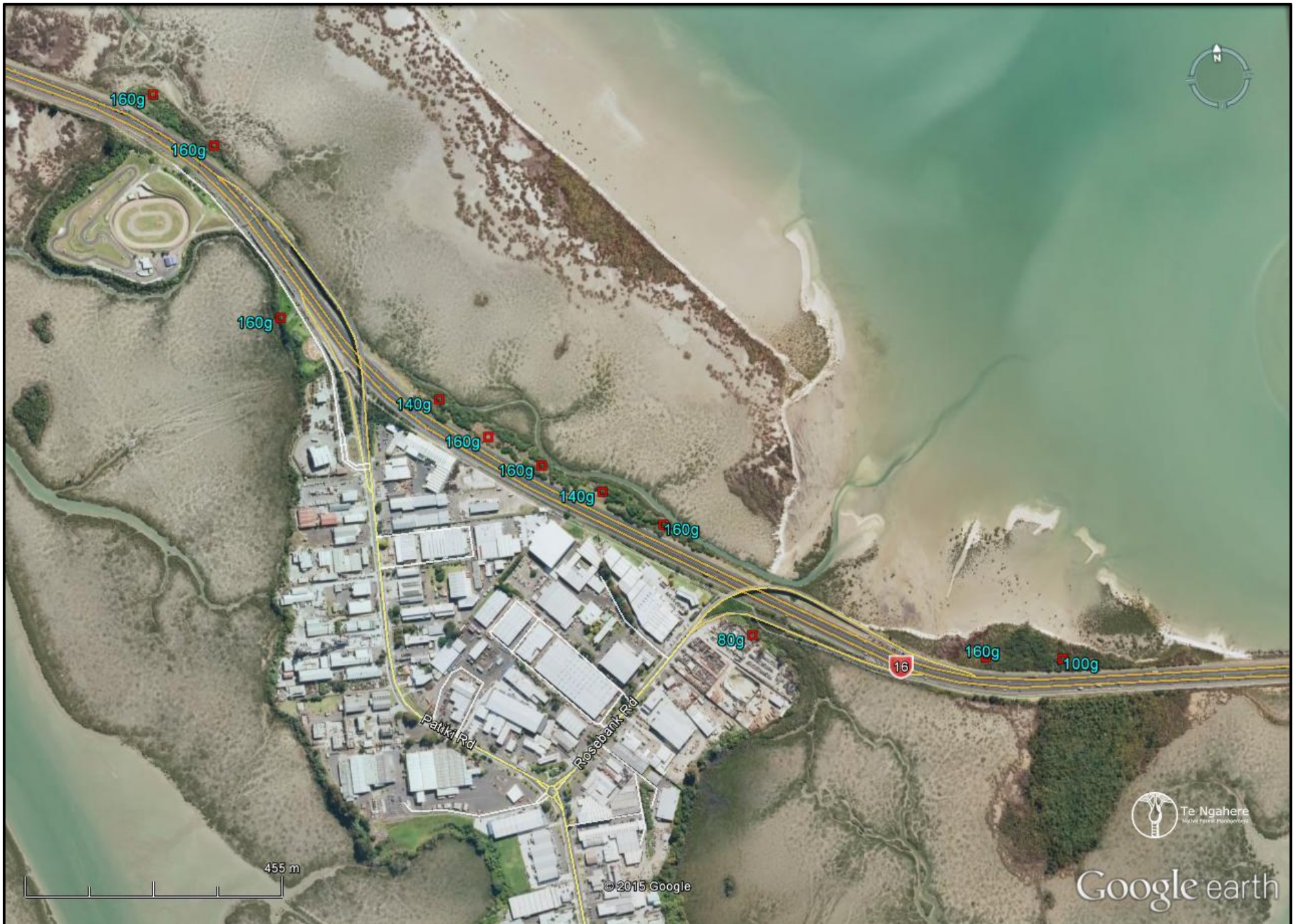


Figure 1: Map showing bait consumption recorded in April 2015



Figure 2: Map showing trap catch recorded In April 2015