

Community Liaison Group Projects Update

Meeting 8 - 12 August 2014

Pringle Park Bowling Club
Te Atatu Peninsula

Agenda

- Welcome and introductions
- 7.00 - 8.00pm
 - Western Ring Route Project context and overview
 - Te Atatu Interchange Improvements Project update
 - Causeway Upgrade Project update
 - Questions relating to these Transport Agency projects

Introductions and other agenda requests

From the audience...

Introductions

- Brian Robertson, Kevin Stevens, Nettie Bird, Helen Kerr
Te Atatu Interchange Improvements Project
- Simon Paton, Elizabeth Collins, Sarah Price
Causeway Upgrade Project
- Ken Clive, **Auckland Council**

Western Ring Route



Te Atatu Interchange: update

Brian Robertson, Project Manager

Construction progress



Construction progress



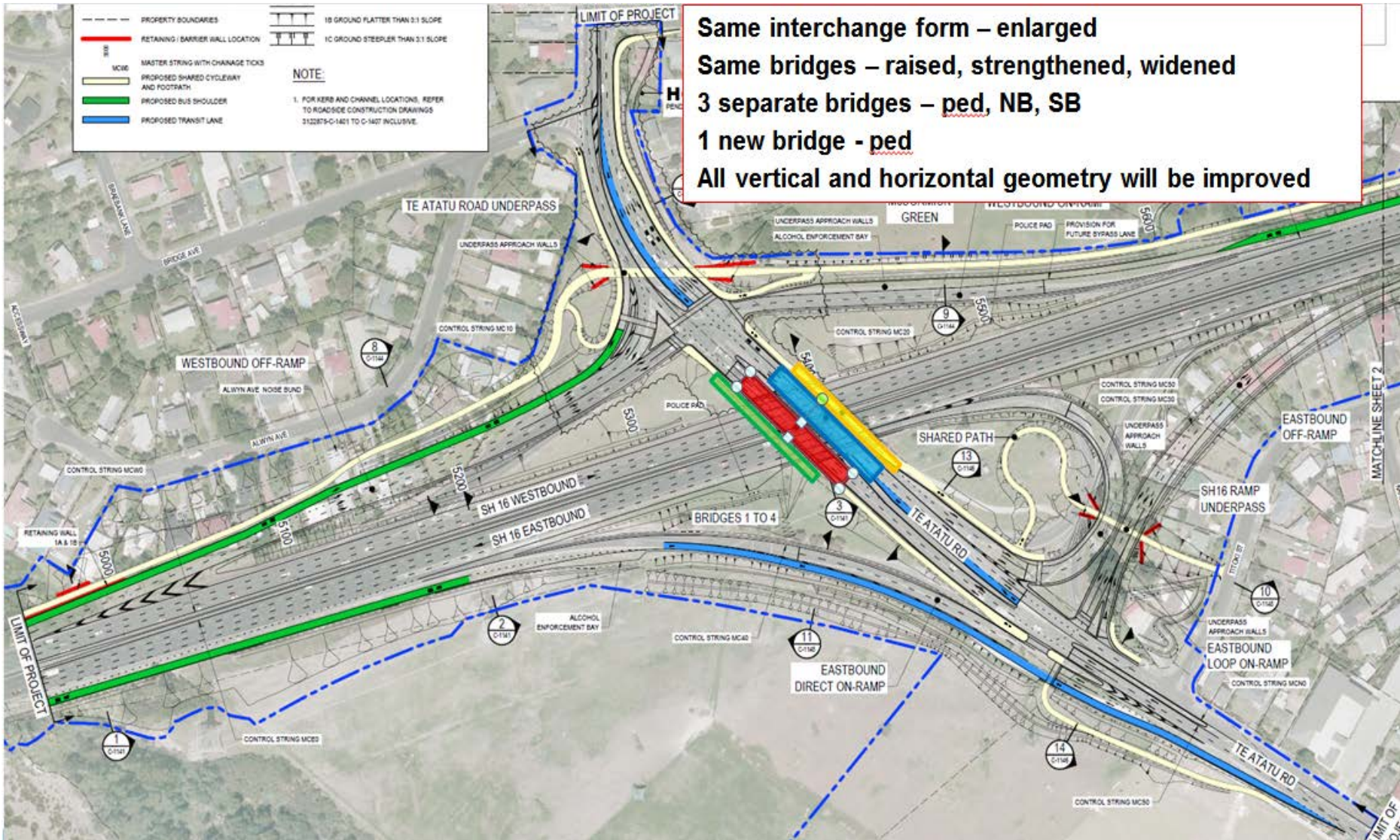
Construction progress



Bridge jacking



Project scope



Designs

1. Specimen design
2. Accepted tender design

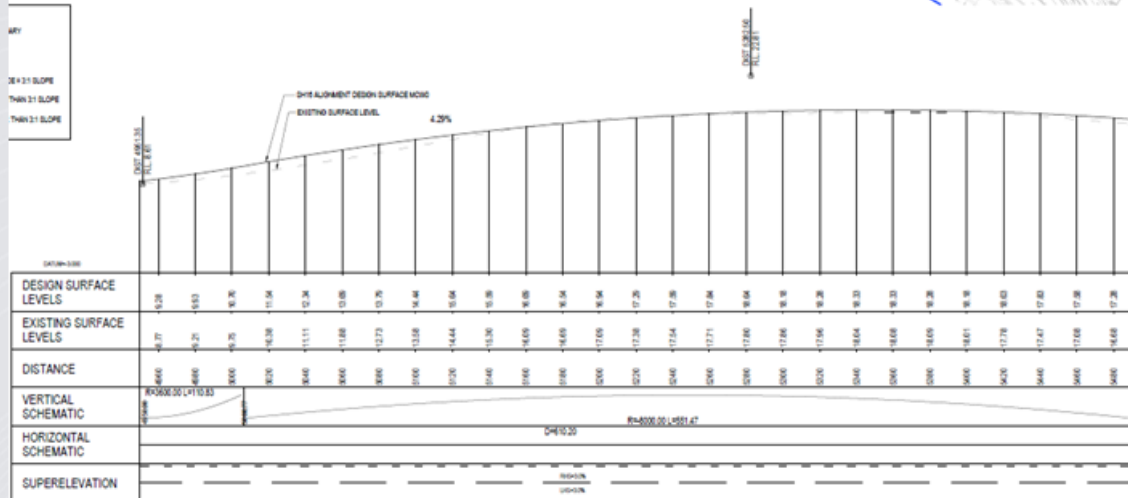
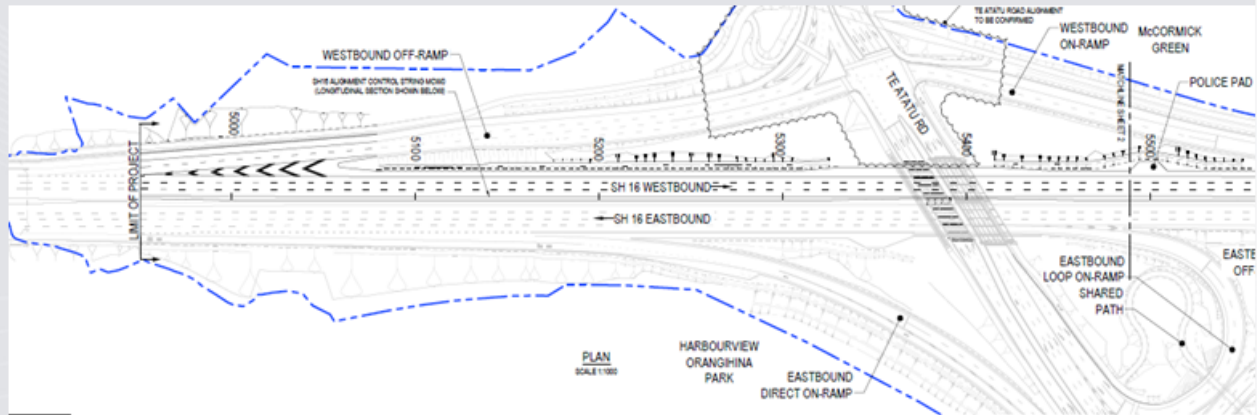
Specimen design

- Leave the bridge levels
- Lower the motorway
- Numerous traffic switches
- Sheetpiles
- Undercuts
- “Driving in a trench”
- Lots of temporary pavement
- Slow construction process



Approved design

- Raise the bridge
- Smooth the motorway vertical curve with overlays
- Less invasive motorway re-construction
- Fewer traffic switches on the motorway



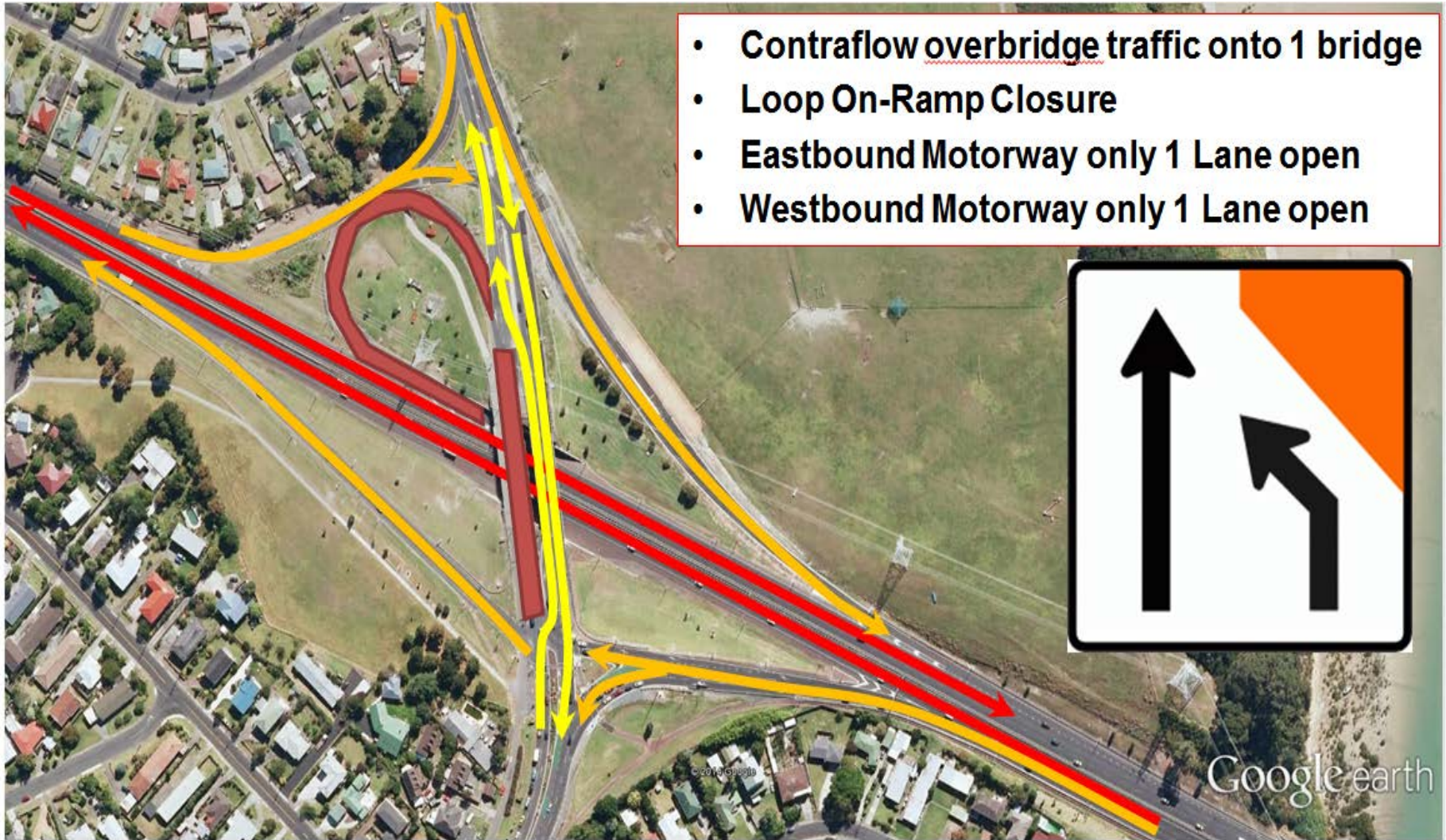
Chosen method

Jack the bridge

- Weekend closure to raise the bridge
- Full interchange lanes back in action for weekdays



Road closures



Duration and timing

Closure	Bridge
Jack 1	Pedestrian
Jack 2	Northbound
Strengthening (Tensioning)	Northbound
Jack 3	Southbound

**Each closure: 2 days duration
4 (or 5) occurrences**

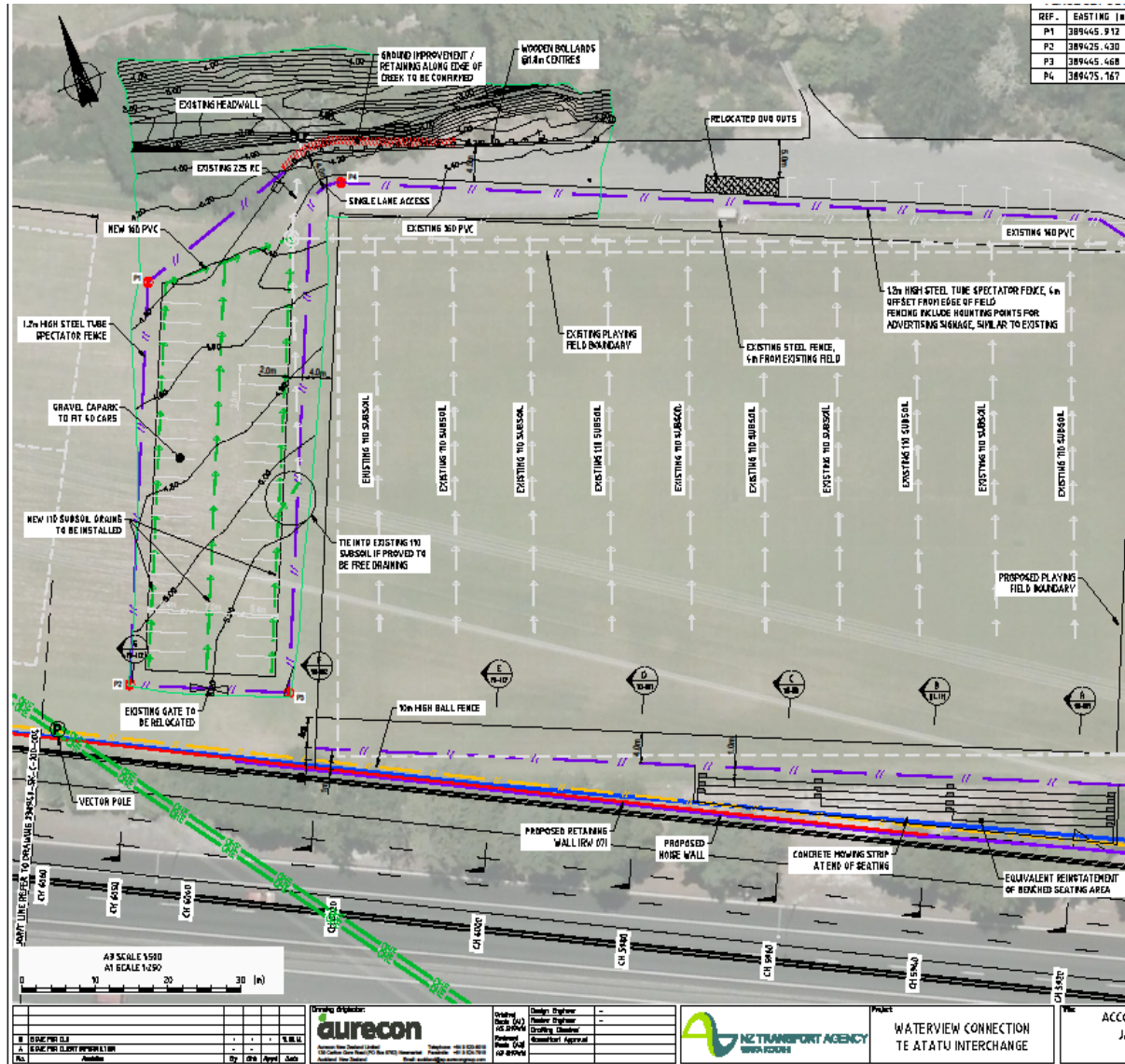
Jack Colvin Park

Kevin Stevens – Transport Agency Project Manager

Jack Colvin Park–accommodation works

- Motorway widening affects the Te Atatu Rugby League Club playing fields and its use
- Discussing the accommodation works with Council Parks, Local Board and Club representatives
- Works alongside and on the park include:
 - Reinstating the benched seating area
 - Erecting a new 10m high ball net fence alongside motorway
 - Relocating existing lights on to the ball fence poles
 - Rotating/realigning location of main playing field by 4m
 - Constructing new metalled car park between the fields
 - Constructing concrete noise wall alongside main playing field and rear of clubrooms

Jack Colvin Park



REV.	DATE	BY	CHKD	APP'D	DESC.
A					EDGE PILE CLUMP APPROVAL

surecon

Design Engineer: [Signature]
 Drafting Engineer: [Signature]
 Project Manager: [Signature]
 Client Approval: [Signature]



Project: WATERVIEW CONNECTION AT ATATU INTERCHANGE

ACC/JA

Questions

Te Atatu Interchange Improvements Project



Causeway Upgrade Project - update

Simon Paton, Project Controls Manager

What we will cover

- Construction update
- Design and environmental monitoring
- Recent questions to the project team
- Upcoming traffic management

Construction progress



Widening Whau River Bridge



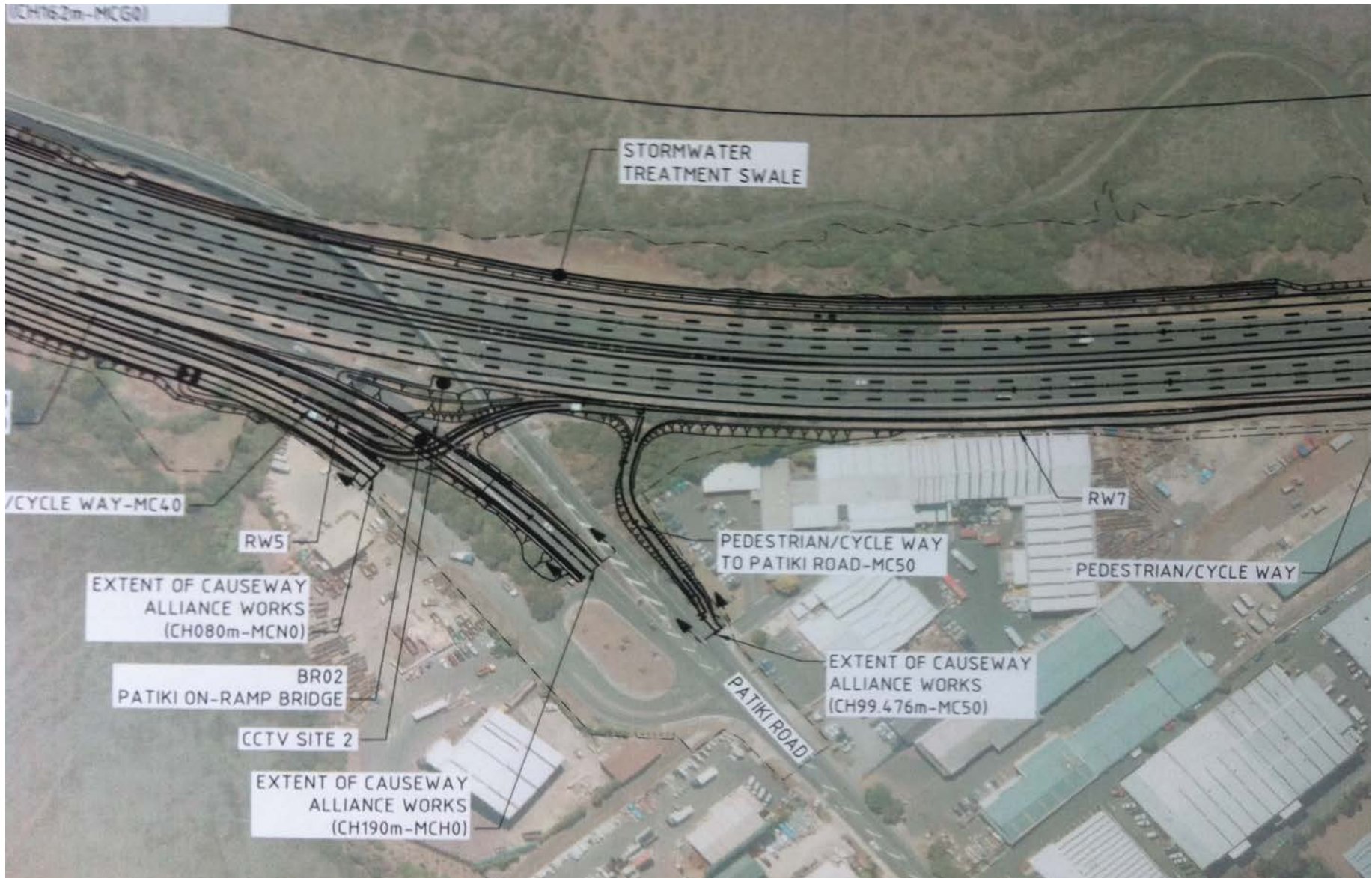
Eastbound reclamation - cut to fill



Retaining Wall 4 - approvals



Cycleway changes at Patiki Rd



Oakley Creek boardwalk

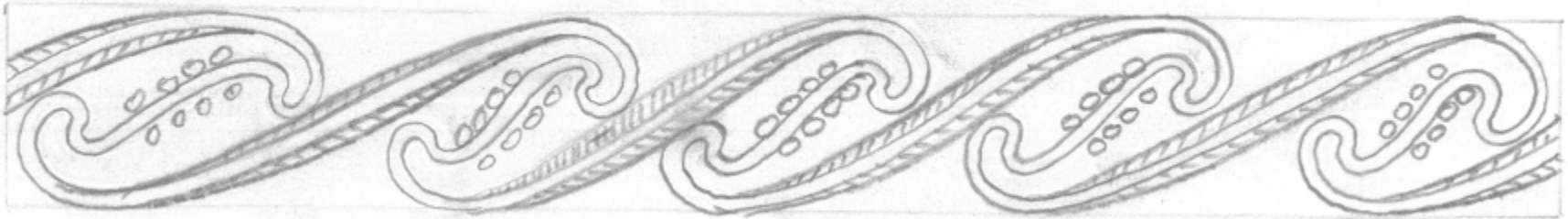
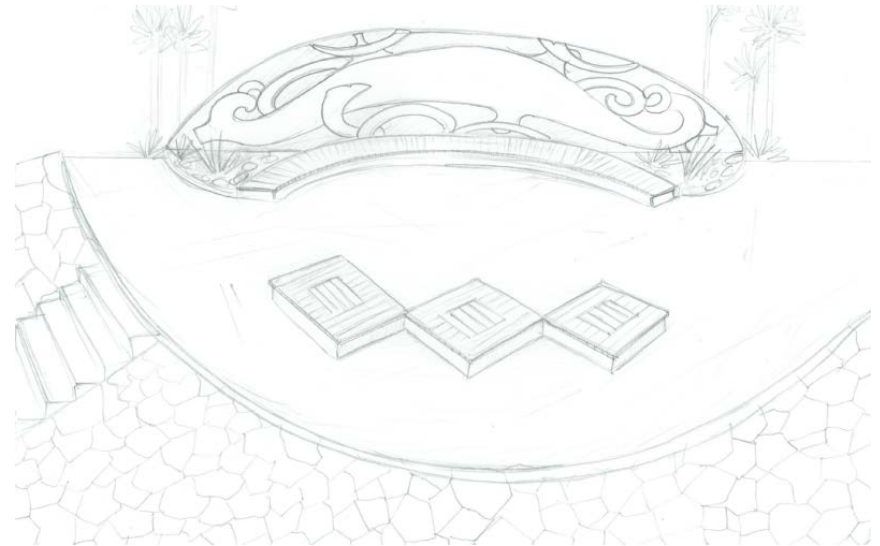


Great North Road Interchange

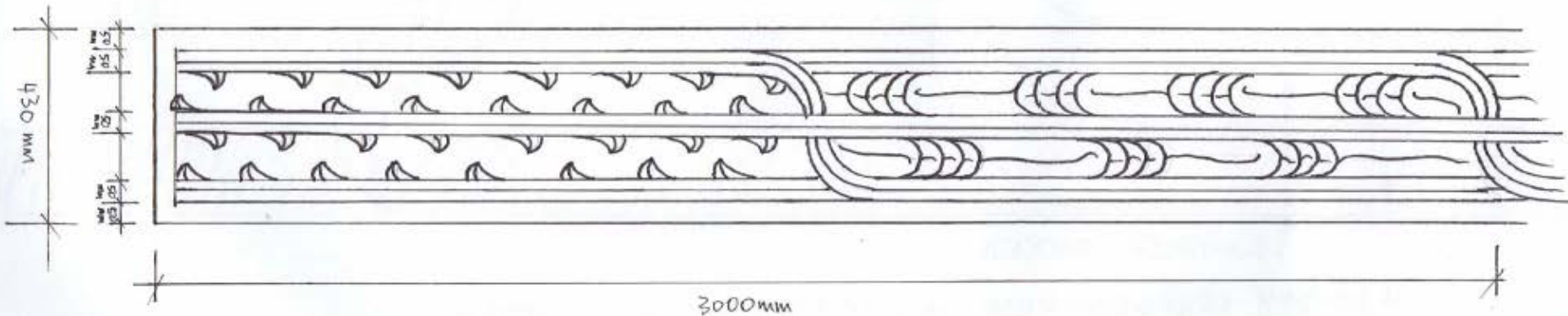
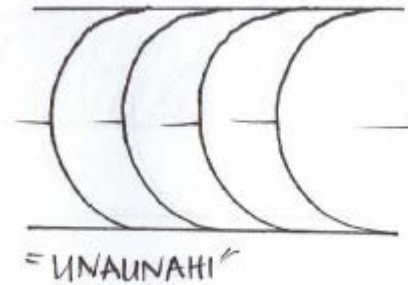
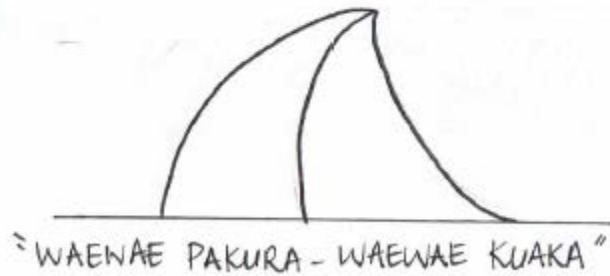


Design update

- Environmental and cultural legacy outcomes
- Iwi artists briefed to develop 'art in design' concepts



Design update – noise walls



Environmental monitoring

- Six-monthly marine ecology monitoring at 12 sites:
 - 6 north of Causeway
 - 6 within Oakley Inlet and Waterview Estuary
- No substantial change, any changes likely to be related to seasons
- Bird monitoring
- Botanical monitoring



Asbestos removal



Feedback and queries

- Night time works - beepers / squawkers / flashing lights
- Basalt drilling at Oakley Creek boardwalk
- Road markings and detour signage
- Positive feedback from cyclists

Cycleway light installation: 25 August 2014

- Permanent cycleway lighting at Great North Road interchange
- Cycleway width temporarily reduced
- Will take approx. two weeks
- Pedestrian barriers and traffic control will be in place



Great North Road eastbound offramp: 26 - 28 Sept 2014

- Major ramp re-alignment
- Closed late Fri 26 Sept
- Milling and asphalt Sat 27 Sept
- Re-opened early Mon 29 Sept



Great North Road eastbound offramp: 26 - 28 Sept 2014



Whau bridge stitch: 26 - 28 Sept 2014



Questions

Causeway Upgrade Project



Where to go for information



- aucklandmotorways.com (re closures)
- nzta.govt.nz/projects/sh16causeway
- nzta.govt.nz/projects/wrr
- Monthly Causeway News
- Next CLG meeting will be **Weds 12 November 2014**

Causeway Alliance

Call: 0800 444 449

Email: info@sh16causeway.co.nz

Te Atatu Interchange Project

Call: 0800 300 007 (Nettie Bird)



16

**Causeway and Te Atatu
Interchange Upgrade Projects**

COMPLETING THE WESTERN RING ROUTE ROAD OF NATIONAL SIGNIFICANCE

CLG meeting dates for 2015



- Tuesday 17 February 2015
- Wednesday 6 May 2015
- Tuesday 18 August 2015
- Wednesday 11 November 2015



**Causeway and Te Atatu
Interchange Upgrade Projects**

COMPLETING THE WESTERN RING ROUTE ROAD OF NATIONAL SIGNIFICANCE

Auckland Transport: update

