

**CAUSEWAY ALLIANCE**  
working for our **thriving** city



## SH16 CAUSEWAY UPGRADE PROJECT



**Monthly Environmental Report**

**May 2013**

### Document history and status

Revision	Date issued	Written By	Reviewed by	Approved by	Revision Status
A	12.06.2013	M Cassidy	M Cassidy	M Cassidy	For Issue

### Distribution of copies

Revision	Purpose	Issued to
A	For Issue	Auckland Council

<b>Printed:</b>	12/06/2013 06:51:00
<b>Last saved:</b>	12 June 2013 06:50 AM
<b>File name:</b>	K:\EN Environment\EN51 Construction\04 Council Reporting\Monthly Report\2013 05 Report\May 2013 SH16 Monthly Environmental Report.docx
<b>Author:</b>	Michael Cassidy
<b>Environmental Manager:</b>	Michael Cassidy
<b>Name of organisation:</b>	Causeway Alliance
<b>Name of project:</b>	SH16 Causeway Upgrade Project
<b>Document version:</b>	<b>Revision A</b>

# Table of Contents

## Contents

1.0	INTRODUCTION	6
1.1	PURPOSE OF THE REPORT	6
2.0	OVERVIEW of ACTIVITIES UNDERTAKEN	6
2.1	Environmental	6
2.2	Communications and Stakeholder Management	6
2.3	Key Stakeholder Milestones	6
2.4	Consultation undertaken with following groups	7
2.5	Construction	8
3.0	MEETINGS, INSPECTIONS & EVENTS	8
4.0	ENVIRONMENTAL MONITORING	9
4.1	EARTHWORKS COMPLIANCE	9
4.2	CONSTRUCTION NOISE & VIBRATION	9
4.3	AIR QUALITY	9
4.4	CONTAMINATED SOIL	9
4.5	EROSION & SEDIMENT CONTROL	9
4.6	ARCHAEOLOGICAL	9
4.7	COASTAL MONITORING	9
4.8	MARINE MONITORING	9
4.9	ECOLOGICAL	10
5.0	QUERIES, CONCERNES and COMPLAINTS	10
6.0	WORKS PROPOSED FOR JUNE 2013	10
	<b>Appendix A:</b> SH16 Causeway Alliance Construction Zone Plan	
	<b>Appendix B:</b> SH16 Causeway Alliance 3 Month Construction Programme	
	<b>Appendix C:</b> SH16 Causeway Summary Construction Programme	
	<b>Appendix D:</b> SH16 Causeway CLG Minutes 15.05.13	
	<b>Appendix E:</b> SH16 Causeway Stakeholder Database Report May 2013	

## **1.0 INTRODUCTION**

### **1.1 PURPOSE OF THE REPORT**

---

To meet the reporting requirements for the SH16 Causeway Alliance a monthly report is required by the Board of Inquiry to be prepared and forwarded to Auckland Council in the second week of the following month.

This report describes and details the month of May 2013.

## **2.0 OVERVIEW of ACTIVITIES UNDERTAKEN**

### **2.1 Environmental**

---

MRA variation application and ministers submission has been signed off and is being taken to Ministers office for presentation and signing by two Ministers on 15<sup>th</sup> May (2 days early).

Response sent to Auckland Council (AC) regarding the requirement to finalise noise bund design for Alwyn Avenue residents – this will be the responsibility of the Te Atatu Project Team when appointed.

Compliance requirements under discussion with Auckland Council including - bird roosting requirements, shell bank removal and reinstatement method, coastal consents conditions and pre-construction consent condition compliance. All the above have been resolved throughout the period.

Monthly meetings with Auckland Council compliance team have been instigated to allow regular catch up.

### **2.2 Communications and Stakeholder Management**

---

CLG meeting undertaken on Wednesday 15th May 2013 – agenda included Te Atatu Road Construction Yard establishment, Alwyn Avenue access track (down to Whau bridge), Update on SH16 works programme (next 3 months), revised urban design and landscape plans, proposed marine reserve viewing platforms (refer CLG Minutes Appendix D).

### **2.3 Key Stakeholder Milestones**

---

- Official opening - sod turning took place on 24 May, Prime Minister in attendance.
- Produce Construction News – a quarterly update on project progress

- Host Community Liaison Group on 15 May
- Complete project website and intranet content
- Complete way-finding signage for Taupuni (Construction Yard 1)
- Meeting with Te Atatu Area School Principals
- Continue to develop Stakeholder Database
- Meet Harbour Master re Whau River access considerations
- Plan dilapidation surveys for affected residents of Pt Chevalier
- Finalise discussions with Well-Connected Alliance regarding communications with Pt Chevalier residents.

## 2.4 Consultation undertaken with following groups

---

- |  |   |
|--|---|
| • Auckland Transport                     | Response on proposed shared path connection from Te Atatu north under Whau Bridge, review of signage and line marking plans |
| • Department of Conservation (DOC)       | Coordinate progress and further information to support variation to Marine Reserves Act authority                           |
| • Ministry of Transport (MOT)            | Coordinate progress with DOC  |
| • Auckland Council (AC)                  | Property access and occupation, proposed artwork on fence outside Taupuni   |
| • Aaron and Fiona Bridges (Alwyn Avenue) | Construction and motorway noise, consent condition compliance queries, programme of works                                   |
| • Well Connected Alliance                | Noise mitigation requirements   |
| • Te Atatu Pony Club                     | Fencing, trees, jumps, security   |
| • NZTA                                   | Property access   |
| • Auckland Council                       | Design review, engineering approval process and asset register (of new Council assets)                                      |
| • Chorus                                 | Domain cable relocation in Rosebank Domain  |
| • JTOC / AMA/NZTA                        | Maintaining existing utilities for monitoring motorway operational performance and VMS                                      |
| • Te Kawerau                             | Project interface including design, lighting, landscaping and cultural issues   |
| • AMA / Council                          | Graffiti protections on surfaces along shared path and future maintenance responsibilities                                  |

## 2.5 Construction

---

- Work ready status reviews conducted and supportive of construction commencement
- 90-Day plan on schedule
- Coordination of design outputs based on construction requirements continues
- Taupuni establishment complete, site accommodation available from late May 2013
- Long term TTM installed to GNR WB on-ramp and SH16 EB carriageway at Traherne Island
- Site clearance works commenced to Traherne Island
- Preliminary works to Alwyn Avenue commence in late May 2013
- Key resources in place and performing well.

## 3.0 MEETINGS, INSPECTIONS & EVENTS

---

03 May 2013	Earthworks Compliance Inspection (Auckland Council / Causeway Alliance)
06 May 2013	Vegetation assessments at Traherne Island Nth (Causeway Alliance / Bioresarches)
10 May 2013	Vegetation assessments at Traherne Island Nth (Causeway Alliance / Bioresarches)
15 May 2013	Meeting with Auckland Harbourmaster (Auckland Council / Causeway Alliance)
16 May 2013	Reptile inspection at Great North Road Interchange (Causeway Alliance / Bioresarches)
16 May 2013	Monthly environmental compliance update with Auckland Council compliance team (Auckland Council / Causeway Alliance)
16 May 2013	Earthworks Compliance Inspection (Auckland Council / Causeway Alliance)
23 May 2013	Earthworks Compliance Inspection (Auckland Council / Causeway Alliance)
24 May 2013	Prime Minister sod turning event at Construction Yard 1
27 May 2013	Coastal Compliance Inspection (Auckland Council / Causeway Alliance)
27 May 2013	Reptile inspection at Whau Bridge (Causeway Alliance / Bioresarches)
29 May 2013	Construction Yard 1 Bird Roosting Assessment (Causeway Alliance / Bioresarches)
31 May 2013	Earthworks Compliance Inspection (Auckland Council / Causeway Alliance)

## **4.0 ENVIRONMENTAL MONITORING**

### **4.1 EARTHWORKS COMPLIANCE**

---

Earthworks Compliance Inspections undertaken by Auckland Council officers on the 3<sup>rd</sup>, 16<sup>th</sup>, 23<sup>rd</sup> and 31<sup>st</sup> of May all recorded compliance scores of 1 (Full Compliance)

### **4.2 CONSTRUCTION NOISE & VIBRATION**

---

SSNMP 001 for night work activities at great North Road Interchange approved 08 May 2013.

### **4.3 AIR QUALITY**

---

No air quality complaints or issues were received during the period.

Causeway Alliance Daily Site Reports did not indicate any air quality issues.

### **4.4 CONTAMINATED SOIL**

---

Historic fill material at Rosebank race track tested for contamination.

### **4.5 EROSION & SEDIMENT CONTROL**

---

CESCP No 8: Whau Access Rev A CESCP No.6: GNRI Areas 1 & 2 Rev A approved 09 May 2013

CESCP No 6: Enabling Works addendum approved 10 May 2013

### **4.6 ARCHAEOLOGICAL**

---

Pre-ground breaking inspections for potential archaeological sites undertaken in Zone 5 (Great North Road Interchange).

### **4.7 COASTAL MONITORING**

---

Coastal monitoring inspection undertaken on 27<sup>th</sup> May by Auckland Council officers recorded a compliance score of 1 (Full Compliance)

### **4.8 MARINE MONITORING**

---

No marine monitoring was undertaken during the period.

## **4.9 ECOLOGICAL**

---

Ongoing inspection for Significant and Valued vegetation was undertaken in Zone 1A (Traherne Island North).

Preclearance inspection for Significant and Valued vegetation was undertaken in Zone 5 (Great North Road Interchange).

Pre-clearance inspection for reptiles/lizards was undertaken in Zone 5 (Great North Road Interchange) and Zone 3 (Whau Bridge)

Monthly assessment of avian roosting locations undertaken in Zone 3 (Construction Yard 1).

## **5.0 QUERIES, CONCERNES and COMPLAINTS**

---

Refer to Appendix E: SH16 Causeway Stakeholder Database Report May 2013.

## **6.0 WORKS PROPOSED FOR JUNE 2013**

---

Refer Appendix B for 3 Month Construction Programme

The majority of works programmed for June continue to involve installation of environmental controls and site accommodation.

Zone 1 Causeway will continue clearance works while installing a haul road and vehicle crossing points to establish permanent occupation and safe egress from the east bound motorway lanes. Service relocations will commence with the drainage blanket and wick drains installation running concurrently.

Zone 2 / Zone 3 Alwyn Ave pre condition surveys and commencement of demolition will take place. Existing services will be capped to the properties being demolished. Lizard relocation will take place at the South-West Whau Bridge location, temporary barriers/sight screens and environmental controls installed and access to the site created.

Zone 5 in the Great North Road Interchange Areas will focus on cycleway relocation, installation of temporary barriers and service relocation drilling works will take place on the edge of the cycleway way in the vicinity of Oakley creek.

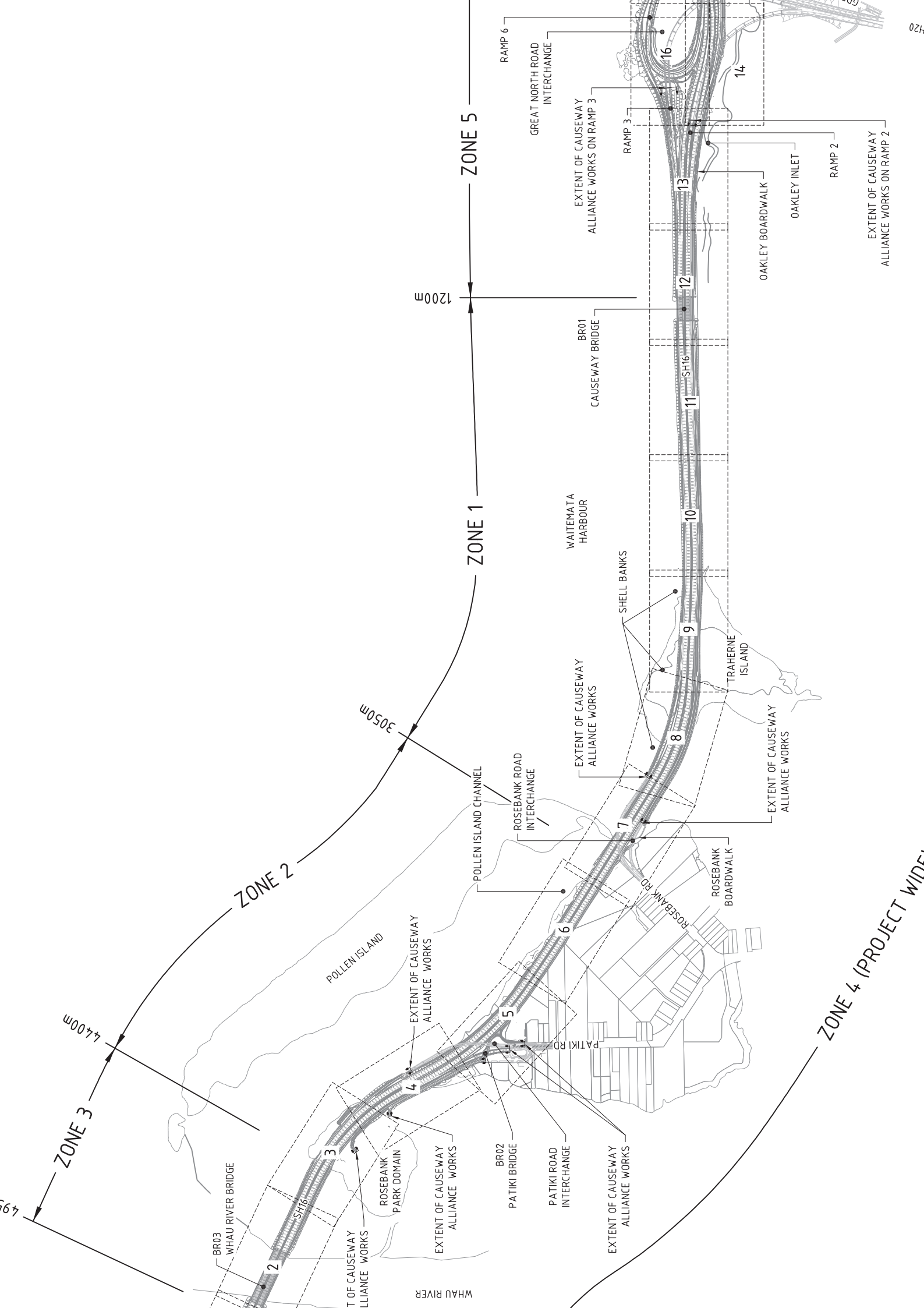
The environmental focus for June will continue to be on pre-inspections prior and during vegetation removal and ground clearance to ensure ecological and archaeological stand over requirements are met.

The commencement of works in the Alwyn Avenue area is coincided with noise training for key staff to ensure monitoring requirements continue to be met.



Construction Yard One has been occupied by the construction team since the beginning of June, the team will continue to establish permanent fixtures at the yard, the remaining design and administration team will relocate in the June – July period.

## **Appendix A: SH16 Causeway Alliance Construction Zone Plan**



4400m

ZONE 3

ZONE 2

3050m

ZONE 1

1200m

ZONE 5

BR03

WHIAU RIVER BRIDGE

2

SH16

3

EXTENT OF CAUSEWAY ALLIANCE WORKS

ROSEBANK PARK DOMAIN

EXTENT OF CAUSEWAY ALLIANCE WORKS

EXTENT OF CAUSEWAY ALLIANCE WORKS

BR02

PATIKI BRIDGE

PATIKI ROAD INTERCHANGE

EXTENT OF CAUSEWAY ALLIANCE WORKS

4

5

6

7

8

9

10

11

12

13

14

16

POLLEN ISLAND

EXTENT OF CAUSEWAY ALLIANCE WORKS

POLLEN ISLAND CHANNEL

ROSEBANK ROAD INTERCHANGE

EXTENT OF CAUSEWAY ALLIANCE WORKS

EXTENT OF CAUSEWAY ALLIANCE WORKS

EXTENT OF CAUSEWAY ALLIANCE WORKS

EXTENT OF CAUSEWAY ALLIANCE WORKS

EXTENT OF CAUSEWAY ALLIANCE WORKS

EXTENT OF CAUSEWAY ALLIANCE WORKS

EXTENT OF CAUSEWAY ALLIANCE WORKS

EXTENT OF CAUSEWAY ALLIANCE WORKS

EXTENT OF CAUSEWAY ALLIANCE WORKS

EXTENT OF CAUSEWAY ALLIANCE WORKS

EXTENT OF CAUSEWAY ALLIANCE WORKS

WAITEMATA HARBOUR

SHELL BANKS

TRAHERNE ISLAND

OAKLEY BOARDWALK

OAKLEY INLET

RAMP 2

EXTENT OF CAUSEWAY ALLIANCE WORKS

RAMP 6

GREAT NORTH ROAD INTERCHANGE

EXTENT OF CAUSEWAY ALLIANCE WORKS ON RAMP 3

RAMP 3

EXTENT OF CAUSEWAY ALLIANCE WORKS ON RAMP 2

RAMP 2

EXTENT OF CAUSEWAY ALLIANCE WORKS ON RAMP 2

EXTENT OF CAUSEWAY ALLIANCE WORKS

EXTENT OF CAUSEWAY ALLIANCE WORKS

EXTENT OF CAUSEWAY ALLIANCE WORKS

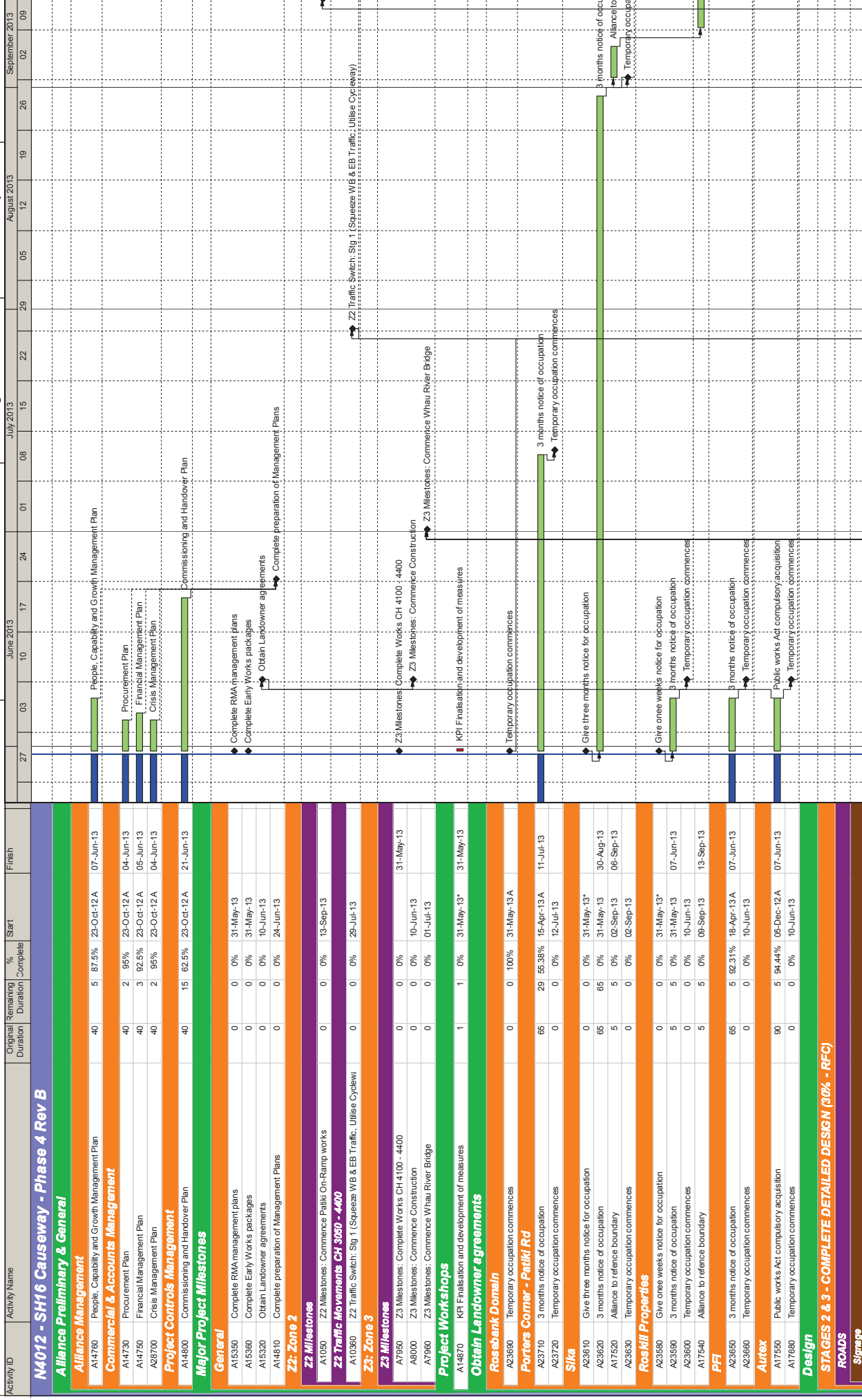
EXTENT OF CAUSEWAY ALLIANCE WORKS

EXTENT OF CAUSEWAY ALLIANCE WORKS

ZONE 4 (PROJECT WIDE)

020

## **Appendix B: SH16 Causeway Alliance 3 Month Construction Programme**



SH16 Causeway  
Construction Programme

Actual Work  
Remaining Work  
Critical Remaining Work

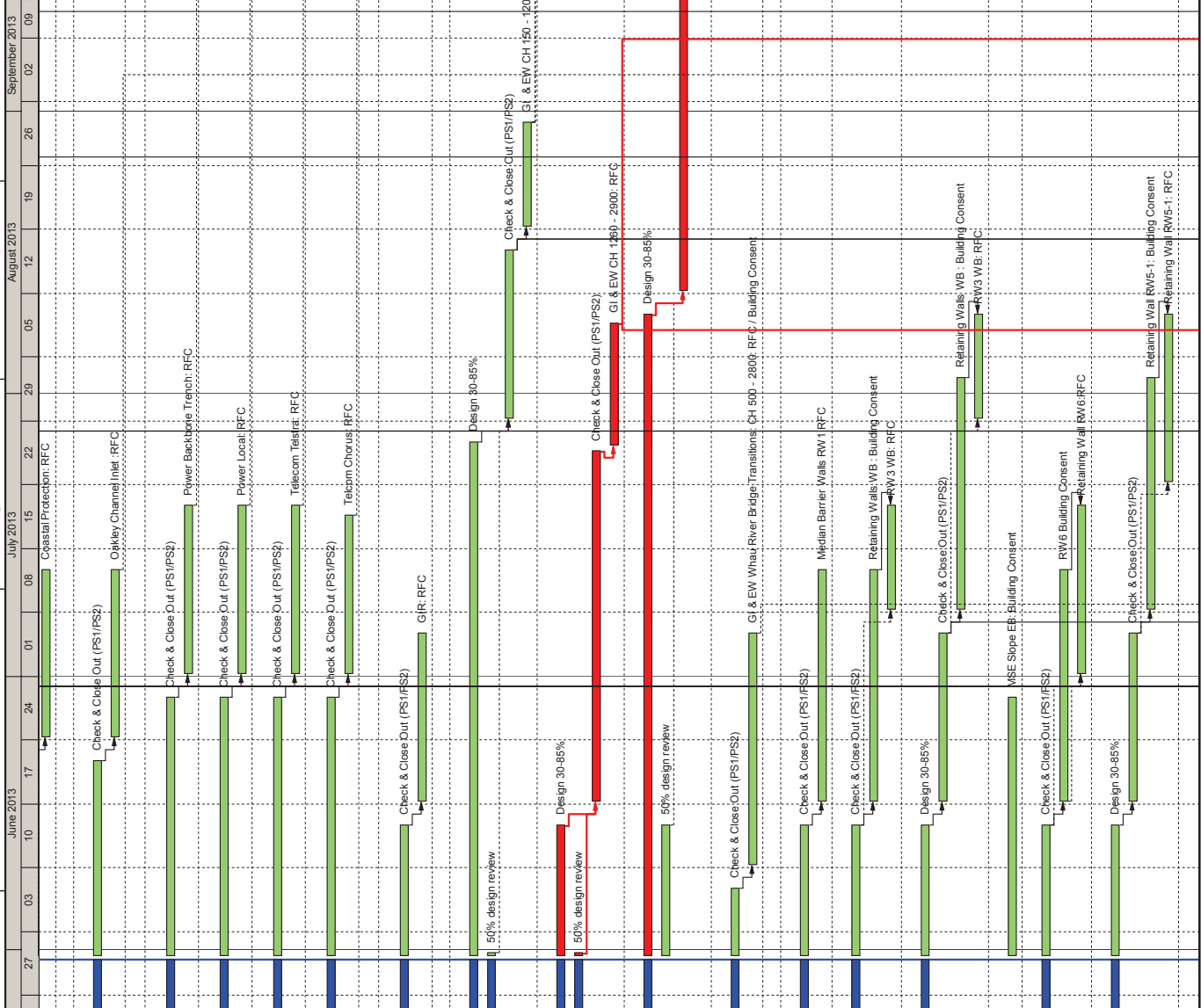
Milestone

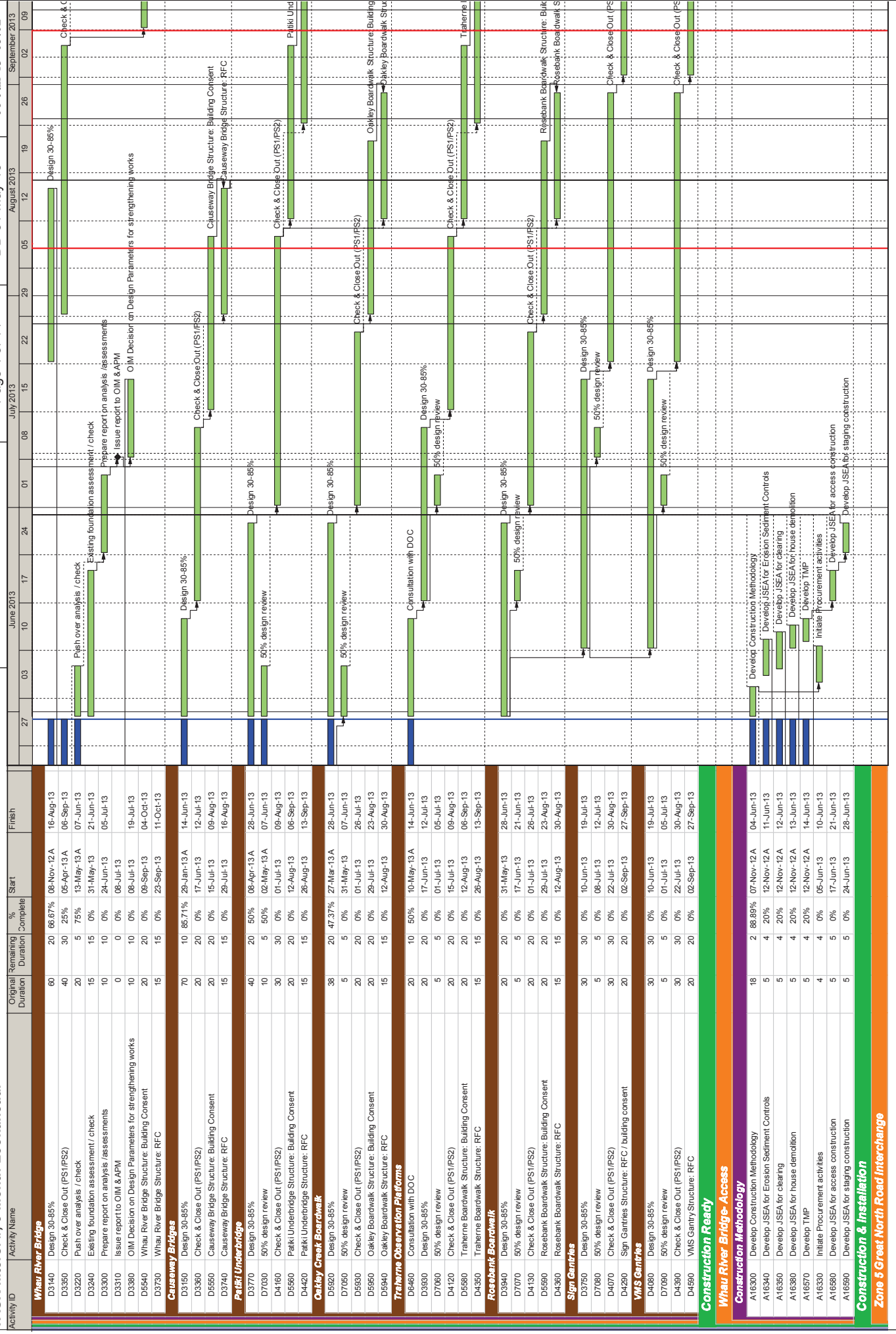


**TASK filters: #, 3 Month Lookahead.**

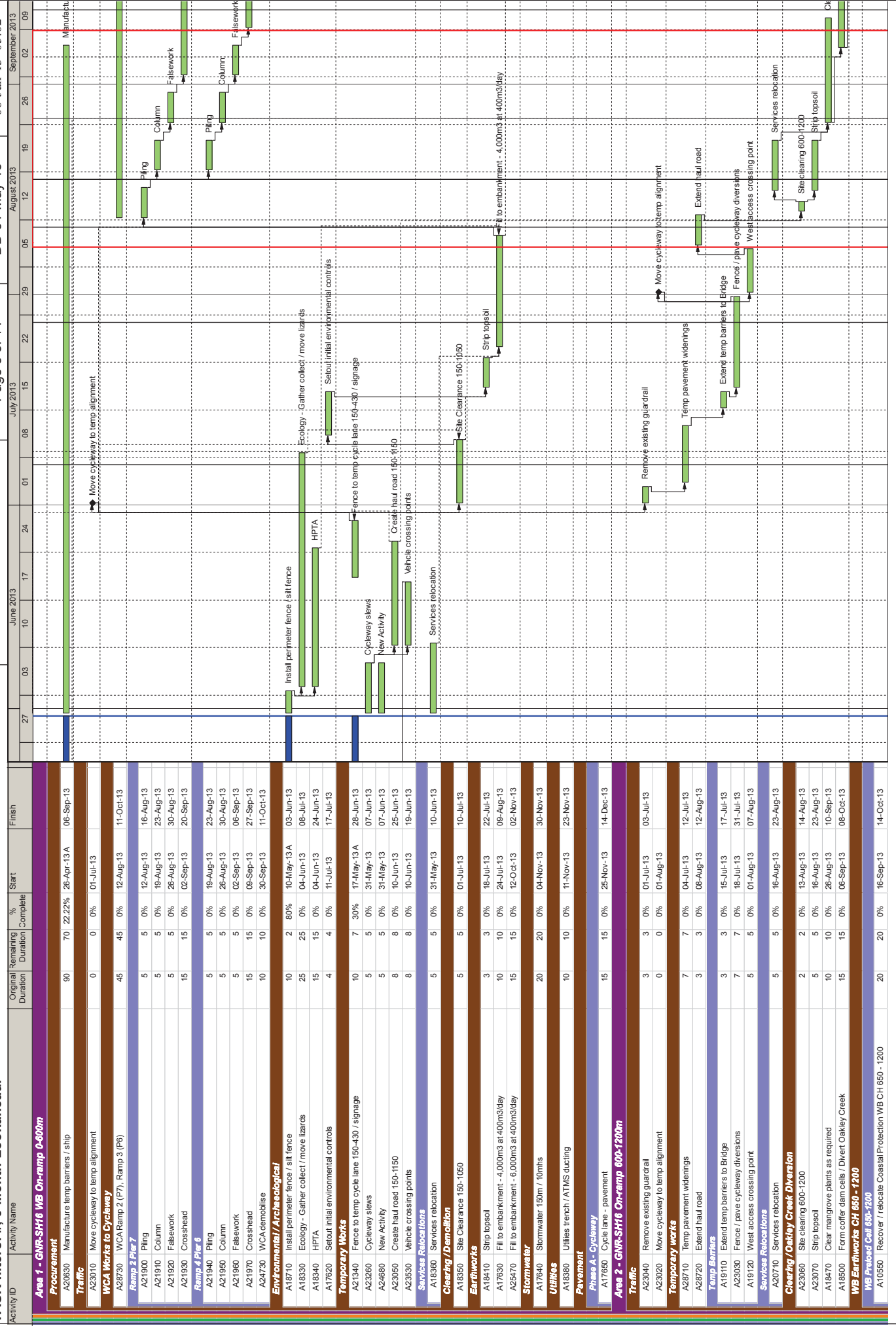
Activity ID	Activity Name	Original Duration	Remaining Duration	% Complete	Start	Finish
D3470	Signage RFC	15	1	93.33%	09-May-13 A	31-May-13
<b>Pavements Permanent Zones 1, 2, 3</b>						
D3400	Design 30-85%	48	4	91.67%	05-Dec-12 A	06-Jun-13
D3970	Check & Close Out (PS1/PS2)	40	40	0%	07-Jun-13	01-Aug-13
D4370	Pavement & Surfacing RFC	14	14	0%	02-Aug-13	21-Aug-13
<b>Pavements Permanent Zone 5</b>						
D6550	Design 30-85%	48	4	91.67%	05-Dec-12 A	06-Jun-13
D6560	Check & Close Out (PS1/PS2)	40	40	0%	07-Jun-13	01-Aug-13
D6570	Pavement & Surfacing RFC	14	14	0%	02-Aug-13	21-Aug-13
<b>Pavements Temporary</b>						
D3410	Design 30-50%	40	37	7.5%	05-Dec-12 A	23-Jul-13
D4880	50% design review	10	10	0%	24-Jul-13	06-Aug-13
D4890	Design 50-85%	15	15	0%	24-Jul-13	13-Aug-13
D3870	Check & Close Out (PS1/PS2)	20	20	0%	14-Aug-13	10-Sep-13
D3790	Temp Pavement RFC	10	10	0%	11-Sep-13	24-Sep-13
<b>Roadside Barriers</b>						
D4150	Check & Close Out (PS1/PS2)	30	5	83.33%	29-Apr-13 A	07-Jun-13
D4500	Roadside Barriers RFC	15	15	0%	10-Jun-13	28-Jun-13
<b>Kerbs, Channels, Edge Beams, Pavement Drains</b>						
D6710	Check & Close Out (PS1/PS2)	20	16	20%	17-May-13 A	24-Jun-13
D6720	Kerbs / Channels / edge beams / pavement drains RFC	15	15	0%	25-Jun-13	15-Jul-13
<b>ITS (Including ATMS &amp; Ramp Metering)</b>						
D4470	Check & Close Out (PS1/PS2)	30	5	83.33%	14-May-13 A	07-Jun-13
D4690	ITS (ATMS & Ramp Metering) RFC	14	14	0%	10-Jun-13	27-Jun-13
<b>Lighting</b>						
D4850	Check & Close Out (PS1/PS2)	20	5	75%	29-Apr-13 A	07-Jun-13
D4720	Lighting RFC	14	14	0%	10-Jun-13	27-Jun-13
<b>Landscape and Urban Design</b>						
D4650	Design 30-85%	17	15	11.76%	13-May-13 A	21-Jun-13
D4520	Check & Close Out (PS1/PS2)	20	20	0%	24-Jun-13	19-Jul-13
D4610	Landscape RFC	14	14	0%	22-Jul-13	08-Aug-13
<b>Temporary Traffic Management (TMM)</b>						
D3100	Geometric Design Alignments (30 to 85%)	28	28	0%	31-May-13	10-Jul-13
D4890	Get direction from construction team on design requirements / set	0	0	0%	31-May-13	
D3370	Traffic Services - barriers, drainage, signage (TMMs by others)	25	25	0%	06-Jun-13	10-Jul-13
D3490	Check & Close Out (PS1/PS2)	19	19	0%	11-Jul-13	06-Aug-13
D4010	Temp Traffic Management Plans RFC	15	15	0%	07-Aug-13	27-Aug-13
<b>DRAINAGE</b>						
<b>Stormwater - Temporary</b>						
D3420	Design 30-85%	40	40	0%	31-May-13	26-Jun-13
D6120	Get direction from construction team	0	0	0%	01-May-13*	
D6630	50% design review	10	10	0%	01-Jul-13	12-Jul-13
D3600	Check & Close Out (PS1/PS2)	14	14	0%	29-Jul-13	15-Aug-13
D4040	Temp Storm Water RFC	10	10	0%	16-Aug-13	29-Aug-13
<b>Stormwater Zone 1 - Ch. 1200m to Ch. 3040m</b>						
D3430	Design 30-85%	47	15	68.09%	04-Mar-13 A	21-Jun-13
D4180	Check & Close Out (PS1/PS2)	30	30	0%	24-Jun-13	02-Aug-13
D4450	Z1 Storm Water RFC Ch 1200 - 3050	15	15	0%	05-Aug-13	23-Aug-13
<b>Stormwater Zone 2 - Ch. 3050m to Ch. 4400m</b>						
D3500	Design 30-85%	40	6	85%	11-Mar-13 A	10-Jun-13
D4270	Check & Close Out (PS1/PS2)	30	30	0%	24-Jun-13	02-Aug-13
D4480	Z2 Storm Water RFC Ch 3050 - 4400	15	15	0%	05-Aug-13	23-Aug-13
<b>Stormwater Zone 3 - Ch. 4400m to Ch. 4850m</b>						
D4400	Check & Close Out (PS1/PS2)	20	20	0%	24-Jun-13	19-Jul-13
D4580	Z3 Storm Water RFC Ch 4400 - 4850	15	15	0%	22-Jul-13	09-Aug-13
<b>Stormwater Zone 5 - Ch. 0m to Ch. 1900m</b>						
D4110	Design 30-85%	16	20	0%	05-Apr-13 A	28-Jun-13
D4620	Check & Close Out (PS1/PS2)	30	30	0%	01-Jul-13	09-Aug-13
D4710	Z5 Storm Water RFC Ch 0 - 1200	15	15	0%	12-Aug-13	30-Aug-13
<b>Stormwater Typical Details</b>						
D3510	Check & Close Out (PS1/PS2)	20	5	75%	13-Mar-13 A	07-Jun-13
D3910	Storm Water Typical Details RFC	15	15	0%	10-Jun-13	28-Jun-13
<b>COASTAL PROTECTION WORKS</b>						
D3710	Check & Close Out (PS1/PS2)	30	15	50%	29-Apr-13 A	21-Jun-13

Activity Name	Original Duration	Remaining Duration	% Complete	Start	Finish
D3980 Coastal Protection: RFC	15	15	0%	24-Jun-13	12-Jul-13
<b>Channel Works</b>					
D3880 Check & Close Out (PS1/PS2)	20	15	25%	29-Apr-13A	21-Jun-13
D4020 Oakley Channel Inlet: RFC	15	15	0%	24-Jun-13	12-Jul-13
<b>UTILITIES</b>					
<b>Power (backbone trench)</b>					
D3340 Check & Close Out (PS1/PS2)	30	20	33.33%	01-May-13A	28-Jun-13
D3820 Power Backbone Trench: RFC	15	15	0%	01-Jul-13	19-Jul-13
<b>Power (local)</b>					
D4090 Check & Close Out (PS1/PS2)	30	20	33.33%	01-May-13A	28-Jun-13
D4600 Power Local: RFC	15	15	0%	01-Jul-13	19-Jul-13
<b>Telecommunications (Teletra Clear)</b>					
D4340 Check & Close Out (PS1/PS2)	30	20	33.33%	08-May-13A	28-Jun-13
D4680 Telecom Teletra: RFC	15	15	0%	01-Jul-13	19-Jul-13
<b>Telecommunications (Chorus)</b>					
D4250 Check & Close Out (PS1/PS2)	30	20	33.33%	07-May-13A	28-Jun-13
D4630 Telecom Chorus: RFC	14	14	0%	01-Jul-13	18-Jul-13
<b>GEOTECHNICAL</b>					
<b>GIR</b>					
D7100 Check & Close Out (PS1/PS2)	15	10	33.33%	24-May-13A	14-Jun-13
D7110 GIR: RFC	15	15	0%	17-Jun-13	05-Jul-13
<b>Ground Improvements &amp; Earthworks</b>					
<b>SH16 Mainline - ONR Bridge to Causeway Bridge 140-1200</b>					
D3260 Design 30-85%	35	40	0%	05-Apr-13A	26-Jul-13
D6880 50% design review	10	1	90%	10-May-13	31-May-13
D3860 Check & Close Out (PS1/PS2)	15	15	0%	29-Jul-13	16-Aug-13
D4300 GI & EW CH 150 - 1200: RFC	10	10	0%	19-Aug-13	30-Aug-13
<b>SH16 Mainline Causeway Bridge to Steel Bank 140-2100 (incl transitions)</b>					
D3270 Design 30-85%	70	10	85.71%	08-Nov-12A	14-Jun-13
D6890 50% design review	10	1	90%	26-Apr-13A	31-May-13
D3870 Check & Close Out (PS1/PS2)	29	29	0%	17-Jun-13	25-Jul-13
D4310 GI & EW CH 1260 - 2900: RFC	10	10	0%	26-Jul-13	08-Aug-13
<b>SH16 Mainline Roadbank to Te Ateta 2800-5000</b>					
D3290 Design 30-85%	45	50	0%	05-Dec-12A	09-Aug-13
D6910 50% design review	10	10	0%	31-May-13	14-Jun-13
D3890 Check & Close Out (PS1/PS2)	30	30	0%	12-Aug-13	20-Sep-13
D4330 GI & EW CH 2800 - 5000: RFC	15	15	0%	23-Sep-13	11-Oct-13
<b>Whau River Bridge Transitions</b>					
D4200 Check & Close Out (PS1/PS2)	20	5	75%	29-Apr-13A	07-Jun-13
D4540 GI & EW Whau River Bridge Transitions: CH 500 - 2800: RFC / B	20	20	0%	10-Jun-13	05-Jul-13
<b>Retaining Walls</b>					
<b>RW1 Median Barrier Wall 630-1023</b>					
D3780 Check & Close Out (PS1/PS2)	20	10	50%	06-May-13A	14-Jun-13
D4100 Median Barrier Walls RW1 RFC	20	20	0%	17-Jun-13	12-Jul-13
<b>RW2, median barrier wall 2275-3740</b>					
D7140 Check & Close Out (PS1/PS2)	15	10	33.33%	24-May-13A	14-Jun-13
D7150 Retaining Walls WB: Building Consent	20	20	0%	17-Jun-13	12-Jul-13
D7160 RW3 WB: RFC	10	10	0%	08-Jul-13	19-Jul-13
<b>RW3 (Stone Strong) WB 3060-3160</b>					
D4240 Design 30-85%	46	10	78.26%	29-Jan-13A	14-Jun-13
D4570 Check & Close Out (PS1/PS2)	15	15	0%	17-Jun-13	05-Jul-13
D5530 Retaining Walls WB: Building Consent	20	20	0%	08-Jul-13	02-Aug-13
D4700 RW3 WB: RFC	10	10	0%	29-Jul-13	09-Aug-13
<b>RW4 MSE EB 3330-3400 / RW5 Perth On Ramp</b>					
D5520 MSE Slope EB: Building Consent	20	20	0%	31-May-13	28-Jun-13
<b>RW6 Median Barrier Wall 4170-4425</b>					
D3850 Check & Close Out (PS1/PS2)	15	10	33.33%	24-May-13A	14-Jun-13
D7000 RW6 Building Consent	20	20	0%	17-Jun-13	12-Jul-13
D4230 Retaining Wall RW6 RFC	15	15	0%	01-Jul-13	19-Jul-13
<b>RW7 (Stone Strong) WB 3045-3815</b>					
D5880 Design 30-85%	35	10	71.43%	05-Dec-12A	14-Jun-13
D5890 Check & Close Out (PS1/PS2)	15	15	0%	17-Jun-13	05-Jul-13
D5910 Retaining Wall RW5-1: Building Consent	20	20	0%	08-Jul-13	02-Aug-13
D5900 Retaining Wall RW5-1: RFC	15	15	0%	22-Jul-13	09-Aug-13
<b>STRUCTURES</b>					

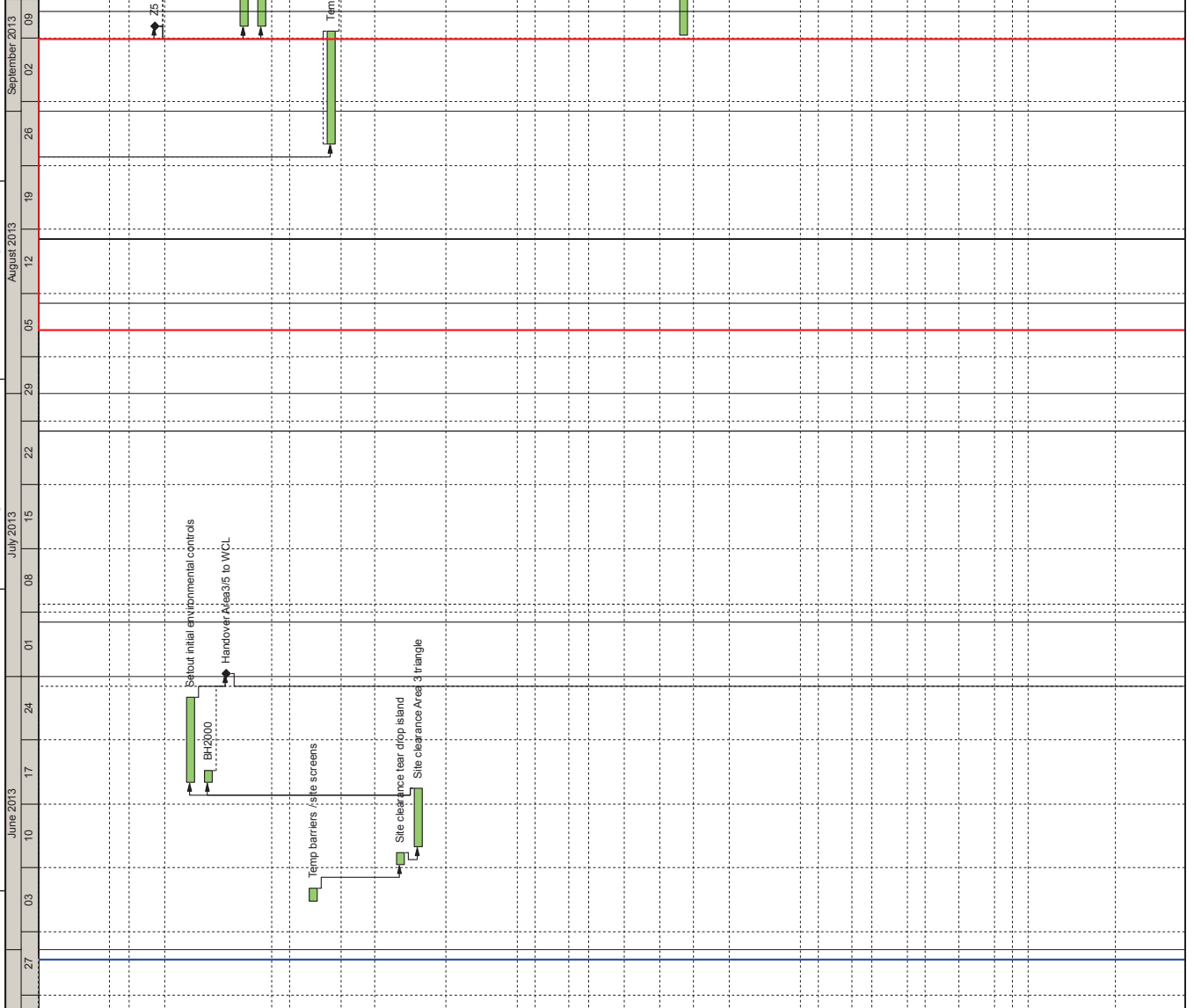




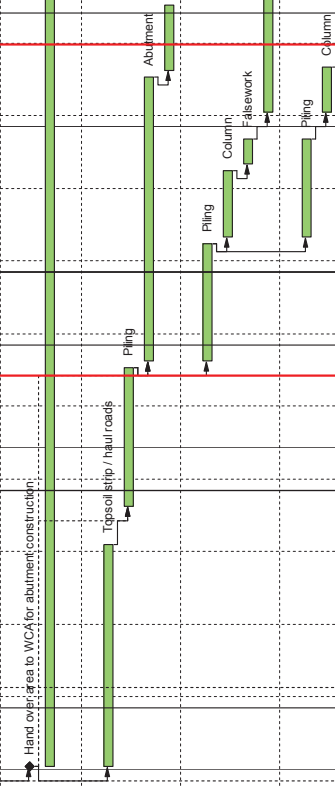




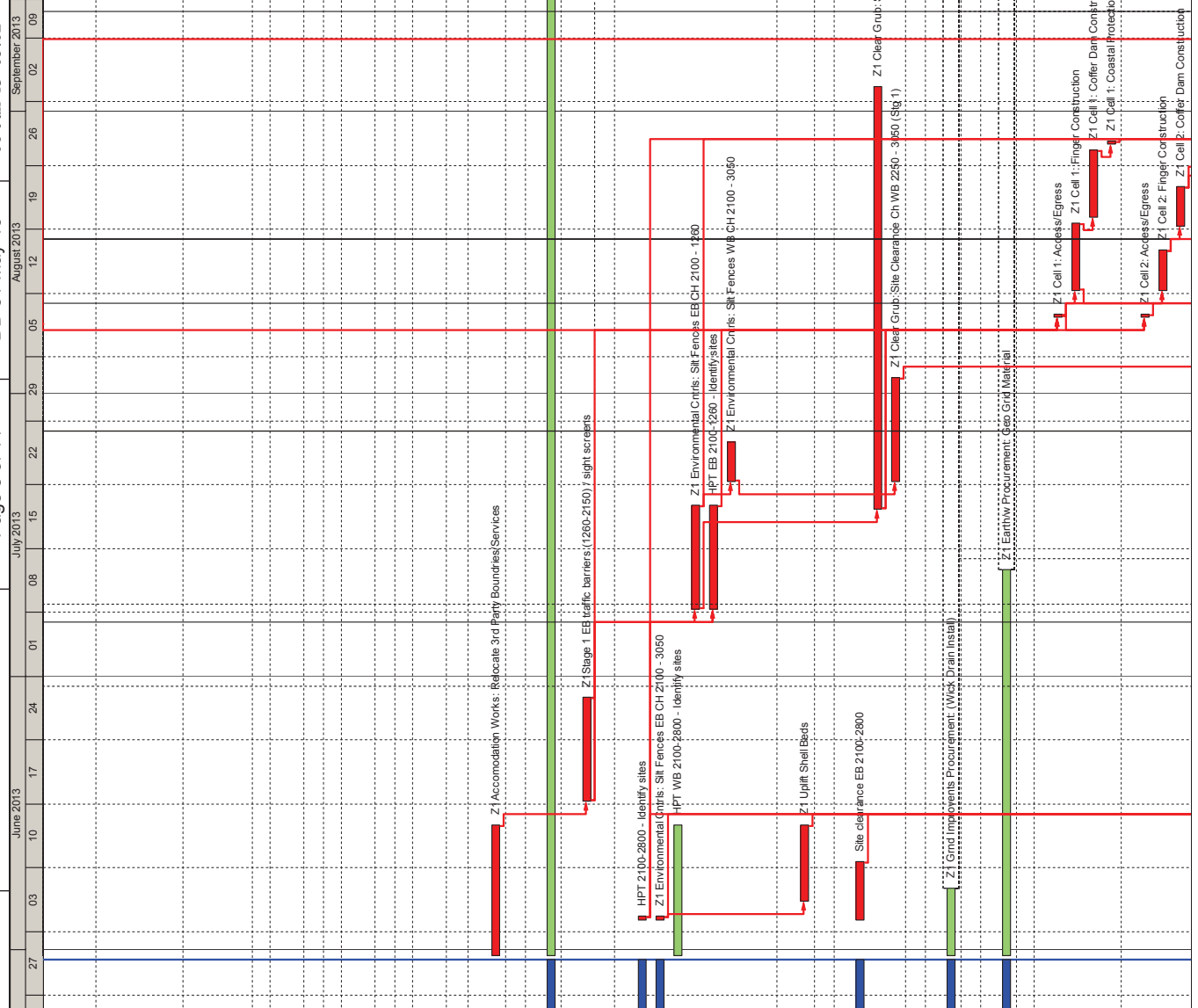
Activity Name	Original Duration	Remaining Duration	% Complete	Start	Finish
A10950 Drainage Blanket	8	8	0%	15-Oct-13	25-Oct-13
A12690 Instrumentation Installation	6	6	0%	29-Oct-13	05-Nov-13
A10660 Fill plus surcharge - application 6200m3 @400m3/day	16	16	0%	07-Nov-13	28-Nov-13
A10870 Sealing Period	167	167	0%	29-Nov-13	14-May-14
<b>Area 3 - GNR-SH16 EB Off-temp 200-080m</b>					
<b>Traffic</b>					
A18650 Z5 move EB traffic south	0	0	0%	10-Sep-13	
<b>Environmental/Archaeological</b>					
A28740 Setout initial environmental controls	8	8	0%	19-Jun-13	28-Jun-13
A28750 BH2000	2	2	0%	19-Jun-13	20-Jun-13
A28760 Handover Area3/5 to WCL	0	0	0%	01-Jul-13	
A18670 Setout initial environmental controls	10	10	0%	10-Sep-13	26-Sep-13
A18620 HPTA	15	15	0%	10-Sep-13	03-Oct-13
<b>Temporary Works</b>					
<b>Temp Barriers</b>					
A28770 Temp barriers / site screens	2	2	0%	06-Jun-13*	07-Jun-13
A18560 Temporary barriers	7	7	0%	28-Aug-13*	09-Sep-13
<b>Services Relocations</b>					
A18640 Services relocation	5	5	0%	25-Nov-13	30-Nov-13
<b>Clearing / Demolition</b>					
A28780 Site clearance tear drop island	2	2	0%	10-Jun-13	11-Jun-13
A28790 Site clearance Area 3 Triangle	5	5	0%	12-Jun-13	18-Jun-13
A18630 Site Clearance	10	10	0%	27-Sep-13	10-Oct-13
<b>Earthworks</b>					
A18690 Strip topsoil for temporary alignment	3	3	0%	21-Nov-13*	23-Nov-13
A18730 Fill for temporary embankment 10,000m3	25	25	0%	25-Nov-13	10-Jan-14
A20460 Strip topsoil - balance	5	5	0%	25-Nov-13	30-Nov-13
<b>Traffic Services</b>					
<b>Procurement</b>					
A19440 Procure sign gantry	70	70	0%	30-Sep-13	20-Jan-14
<b>Area 3 - EB 660 - 1040</b>					
<b>Environmental/Archaeological</b>					
A18770 Setout initial environmental controls	10	10	0%	18-Sep-13	01-Oct-13
<b>Temporary Works</b>					
A11160 Z5 EarthW EB General Ch 650-1025 Access/Egress	5	5	0%	10-Oct-13	15-Oct-13
<b>Temp Barriers</b>					
A28210 Temp barriers / site screens	5	5	0%	09-Sep-13*	17-Sep-13
<b>Clearing</b>					
A18750 Site clearance	5	5	0%	02-Oct-13	08-Oct-13
<b>Earthworks</b>					
A11170 Z5 EB Ch 650-1025: Fill	2	2	0%	17-Oct-13	18-Oct-13
A11110 Z5 EB Ch 650-1025: Drainage Blanket	20	20	0%	19-Oct-13	16-Nov-13
A11130 Z5 EB Ch 650-880: Preload 6950m3 @400/day	18	18	0%	18-Nov-13	10-Dec-13
<b>Traffic Services</b>					
<b>Procurement</b>					
A19540 Procure sign gantry	80	80	0%	30-Sep-13	04-Feb-14
<b>Area 3 - EB 1040-1200</b>					
<b>Environmental</b>					
A18800 Setout initial environmental controls	10	10	0%	23-Sep-13	04-Oct-13
<b>Temporary Works</b>					
<b>Temp Barriers</b>					
A28220 Setout barriers / site screens	5	5	0%	16-Sep-13	20-Sep-13
<b>Clearing</b>					
A18810 Site clearance	5	5	0%	07-Oct-13	11-Oct-13
<b>EB Earthworks CH 1040-1200</b>					
<b>Coffer Dam EB CH 1040 - 1200</b>					
<b>EB Cell 14</b>					
A10040 Z5 Cell 14: Access/Egress	1	1	0%	12-Oct-13	12-Oct-13
A9780 Z5 Cell 14: Finger Construction	2	2	0%	14-Oct-13	15-Oct-13
A9790 Z5 Cell 14: Coffier Dam Construction	2	2	0%	18-Oct-13	21-Oct-13
A10520 Z5 Cell 14: Coastal Protection Removal	1	1	0%	22-Oct-13	22-Oct-13
<b>EB Cell 15</b>					
A10050 Z5 Cell 15: Access/Egress	1	1	0%	14-Oct-13	14-Oct-13
A9850 Z5 Cell 15: Finger Construction	2	2	0%	18-Oct-13	21-Oct-13
A9860 Z5 Cell 15: Coffier Dam Construction	2	2	0%	22-Oct-13	25-Oct-13



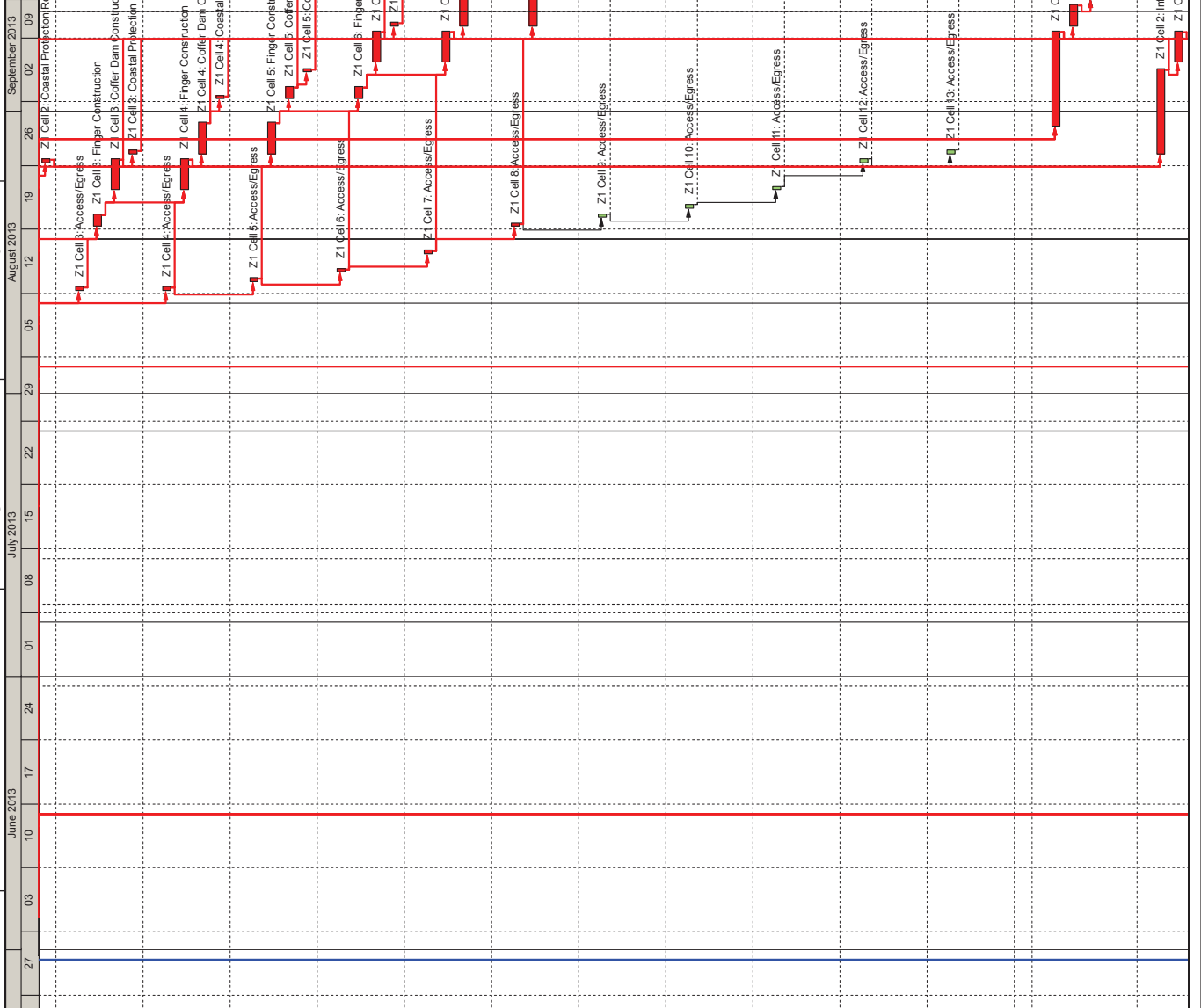
Activity ID	Activity Name	Original Duration	Remaining Duration	% Complete	Start	Finish
<b>EB Cell 14</b>						
A10530	Z5 Cell 15: Coastal Protection Removal	1	1	0%	26-Oct-13	26-Oct-13
A9800	Z5 Cell 14: Infill	6	6	0%	01-Nov-13	12-Nov-13
A9810	Z5 Cell 14: Drainage Blanket	3	3	0%	14-Nov-13	16-Nov-13
A9820	Z5 Cell 14: Wick Installation	5	5	0%	19-Nov-13	25-Nov-13
A12600	Z5 Coffor Dam: Instrumentation Installation EB Cell 14	6	6	0%	26-Nov-13	03-Dec-13
<b>EB Cell 16</b>						
A9870	Z5 Cell 15: Infill	6	6	0%	01-Nov-13	12-Nov-13
A9880	Z5 Cell 15: Drainage Blanket	3	3	0%	14-Nov-13	16-Nov-13
A9890	Z5 Cell 15: Wick Installation	5	5	0%	26-Nov-13	02-Dec-13
<b>Stormwater</b>						
A2300	Z5 Environmental Critis: Treatment Devices W/B CH 650 - 1200	10	10	0%	26-Nov-13	10-Dec-13
<b>Area 5 - SH16-SH20 SB Off-ramp</b>						
<b>Procurement</b>						
A18880	Order / manufacture polystyrene	40	40	0%	19-Aug-13	11-Oct-13
A18890	Order membrane for polystyrene	30	30	0%	19-Aug-13	27-Sep-13
<b>WCA Access for Ramp 3 Pier 1 / Pier 2 / Abutment</b>						
A18930	Hand over area to WCA for abutment construction	0	0	0%	01-Jul-13	15-Nov-13
A19880	WCA Ramp 3 (Abutment / P1 / P2)	98	98	0%	01-Jul-13	15-Nov-13
A19740	Hand area back to CA	0	0	0%	15-Nov-13	
<b>Abutment A</b>						
A22770	Topsoil strip / haul roads	16	16	0%	01-Jul-13	22-Jul-13
A22380	Piling	10	10	0%	26-Jul-13	08-Aug-13
A22390	Abutment	20	20	0%	09-Aug-13	05-Sep-13
A22400	Settlement slab	5	5	0%	06-Sep-13	12-Sep-13
<b>Pier 1</b>						
A22340	Piling	8	8	0%	09-Aug-13	20-Aug-13
A22350	Column	5	5	0%	21-Aug-13	27-Aug-13
A22360	Falswork	3	3	0%	28-Aug-13	30-Aug-13
A22370	Crosshead	17	17	0%	02-Sep-13	24-Sep-13
<b>Pier 2</b>						
A22300	Piling	8	8	0%	21-Aug-13	30-Aug-13
A22310	Column	5	5	0%	02-Sep-13	06-Sep-13
A22320	Falswork	3	3	0%	25-Sep-13	27-Sep-13
A22330	Crosshead	17	17	0%	30-Sep-13	22-Oct-13
A25000	Demob	16	16	0%	23-Oct-13	14-Nov-13
<b>Area 10 - GNR-SH16 EB On Ramp</b>						
<b>WCA Access for Ramp 3 (Pier3-Pier10)</b>						
A25480	Hand over area to WCA for Ramp 3 construction	0	0	0%	24-Sep-13*	
<b>Pier 3</b>						
A21980	Piling	5	5	0%	24-Sep-13	30-Sep-13
A21990	Column	5	5	0%	01-Oct-13	07-Oct-13
A22000	Falswork	5	5	0%	08-Oct-13	14-Oct-13
A22010	Crosshead	15	15	0%	15-Oct-13	05-Nov-13
<b>Pier 4</b>						
A22020	Piling	5	5	0%	01-Oct-13	07-Oct-13
A22030	Column	5	5	0%	08-Oct-13	14-Oct-13
A22040	Falswork	5	5	0%	15-Oct-13	21-Oct-13
A22050	Crosshead	15	15	0%	22-Oct-13	12-Nov-13
<b>Pier 5</b>						
A22060	Piling	5	5	0%	08-Oct-13	14-Oct-13
A22070	Column	5	5	0%	15-Oct-13	21-Oct-13
A22080	Falswork	5	5	0%	22-Oct-13	29-Oct-13
A22090	Crosshead	15	15	0%	30-Oct-13	19-Nov-13
<b>Pier 6</b>						
A22100	Piling	5	5	0%	15-Oct-13	21-Oct-13
A22110	Column	5	5	0%	22-Oct-13	29-Oct-13
A22120	Falswork	5	5	0%	30-Oct-13	05-Nov-13
A22130	Crosshead	15	15	0%	06-Nov-13	26-Nov-13
<b>Pier 7</b>						
A22140	Piling	5	5	0%	22-Oct-13	29-Oct-13
A22150	Column	5	5	0%	30-Oct-13	05-Nov-13
A22160	Falswork	5	5	0%	06-Nov-13	12-Nov-13
A22170	Crosshead	15	15	0%	13-Nov-13	03-Dec-13
<b>Pier 8</b>						
A22180	Piling	5	5	0%	30-Oct-13	05-Nov-13



Activity ID	Activity Name	Original Duration	Remaining Duration	% Complete	Start	Finish
A22190	Column	5	5	0%	06-Nov-13	12-Nov-13
A22200	Falsework	5	5	0%	13-Nov-13	19-Nov-13
A22210	Crosshead	15	15	0%	20-Nov-13	10-Dec-13
<b>Pier 9</b>						
A22220	Piling	5	5	0%	06-Nov-13	12-Nov-13
A22230	Column	5	5	0%	13-Nov-13	19-Nov-13
A22240	Falsework	4	4	0%	20-Nov-13	25-Nov-13
A22250	Crosshead	14	14	0%	26-Nov-13	13-Dec-13
<b>Pier 10</b>						
A22260	Piling	5	5	0%	13-Nov-13	19-Nov-13
A22270	Column	5	5	0%	20-Nov-13	26-Nov-13
A22280	Falsework	4	4	0%	27-Nov-13	02-Dec-13
<b>Traffic Services</b>						
<b>Procurement</b>						
A19780	Procure gantry	80	80	0%	30-Sep-13	04-Feb-14
<b>Area 7 - WCA works to central median</b>						
<b>Temp works CA</b>						
<b>Temp Barriers</b>						
A25390	Line marking / temp barriers EB	6	6	0%	25-Nov-13*	02-Dec-13
<b>Area 9 - SH20-SH16 MSE wall &amp; bridge construction - median</b>						
<b>Lighting</b>						
A19690	Procure gantry	80	80	0%	30-Sep-13	04-Feb-14
<b>Zone 1 Causeway</b>						
<b>Z1 Accommodation Works</b>						
A1920	Z1 Accommodation Works: Relocate 3rd Party Boundaries/Services	10	10	0%	31-May-13	14-Jun-13
<b>Procurement</b>						
A25890	Manufacture 15km barriers /ship	95	75	21.05%	26-Apr-13 A	13-Sep-13
<b>Temp Barriers</b>						
A2420	Z1 Stage 1 EB traffic barriers (1260-2150) / sight screens	10	10	0%	17-Jun-13	28-Jun-13
A20960	Z1 Stage 1 WB traffic barriers (1260-2100) / sight screens	10	10	0%	26-Sep-13	08-Oct-13
<b>Z1 Environmental Controls</b>						
A2480	HPT 2100-2800 - Identify sites	10	1	90%	13-May-13 A	04-Jun-13
A20880	Z1 Environmental Controls: Silt Fences EB CH 2100 - 3050	10	1	90%	13-May-13 A	04-Jun-13
A26000	HPT WB 2100-2800 - Identify sites	10	0	0%	31-May-13	14-Jun-13
A2460	Z1 Environmental Controls: Silt Fences EB CH 2100 - 1260	10	0	0%	08-Jul-13	19-Jul-13
A20870	HPT EB 2100-1260 - Identify sites	10	0	0%	08-Jul-13	19-Jul-13
A2490	Z1 Environmental Controls: Silt Fences WB CH 2100 - 3050	5	5	0%	22-Jul-13	26-Jul-13
A25990	HPT WB 2100-1260 - Identify sites	10	0	0%	09-Oct-13	22-Oct-13
A26010	Z1 Environmental Controls: Silt Fences WB CH 2100 - 1260	10	0	0%	09-Oct-13	22-Oct-13
<b>Shell Bank</b>						
A1390	Z1 Uplift Shell Beds	5	5	0%	06-Jun-13	14-Jun-13
<b>Z1 Clearing &amp; Demolition</b>						
<b>Clear Grub</b>						
A1400	Site clearance EB 2100-2800	15	5	66.67%	13-May-13 A	10-Jun-13
A1390	Z1 Clear Grub: Site Clearance Ch EB 1260 - 2100 (Sig 1)	20	20	0%	19-Jul-13	03-Sep-13
A13370	Z1 Clear Grub: Site Clearance Ch WB 2250 - 3050 (Sig 1)	5	5	0%	22-Jul-13	02-Aug-13
<b>Z1 Ground Improvements</b>						
<b>Procurement</b>						
A1680	Z1 Grnd Improvements Procurement: (Wick Drain Install)	60	5	91.67%	18-Feb-13 A	07-Jun-13
<b>Z1 Earthworks</b>						
<b>Procurement</b>						
A1620	Z1 Earthw Procurement: Geo Grid Material	60	30	50%	11-Mar-13 A	12-Jul-13
<b>Coffer Dam EB CH 1260 - 3050</b>						
<b>EB Cell 1 1900-2000</b>						
A1465	Z1 Cell 1: Access/Egress	1	1	0%	09-Aug-13	09-Aug-13
A1455	Z1 Cell 1: Finger Construction	4	4	0%	12-Aug-13	19-Aug-13
A1460	Z1 Cell 1: Cofferdam Construction	4	4	0%	20-Aug-13	27-Aug-13
A1640	Z1 Cell 1: Coastal Protection Removal	1	1	0%	28-Aug-13	28-Aug-13
<b>EB Cell 2 1700-1900</b>						
A9920	Z1 Cell 2: Access/Egress	1	1	0%	09-Aug-13	09-Aug-13
A8940	Z1 Cell 2: Finger Construction	3	3	0%	12-Aug-13	16-Aug-13
A8950	Z1 Cell 2: Cofferdam Construction	3	3	0%	19-Aug-13	23-Aug-13

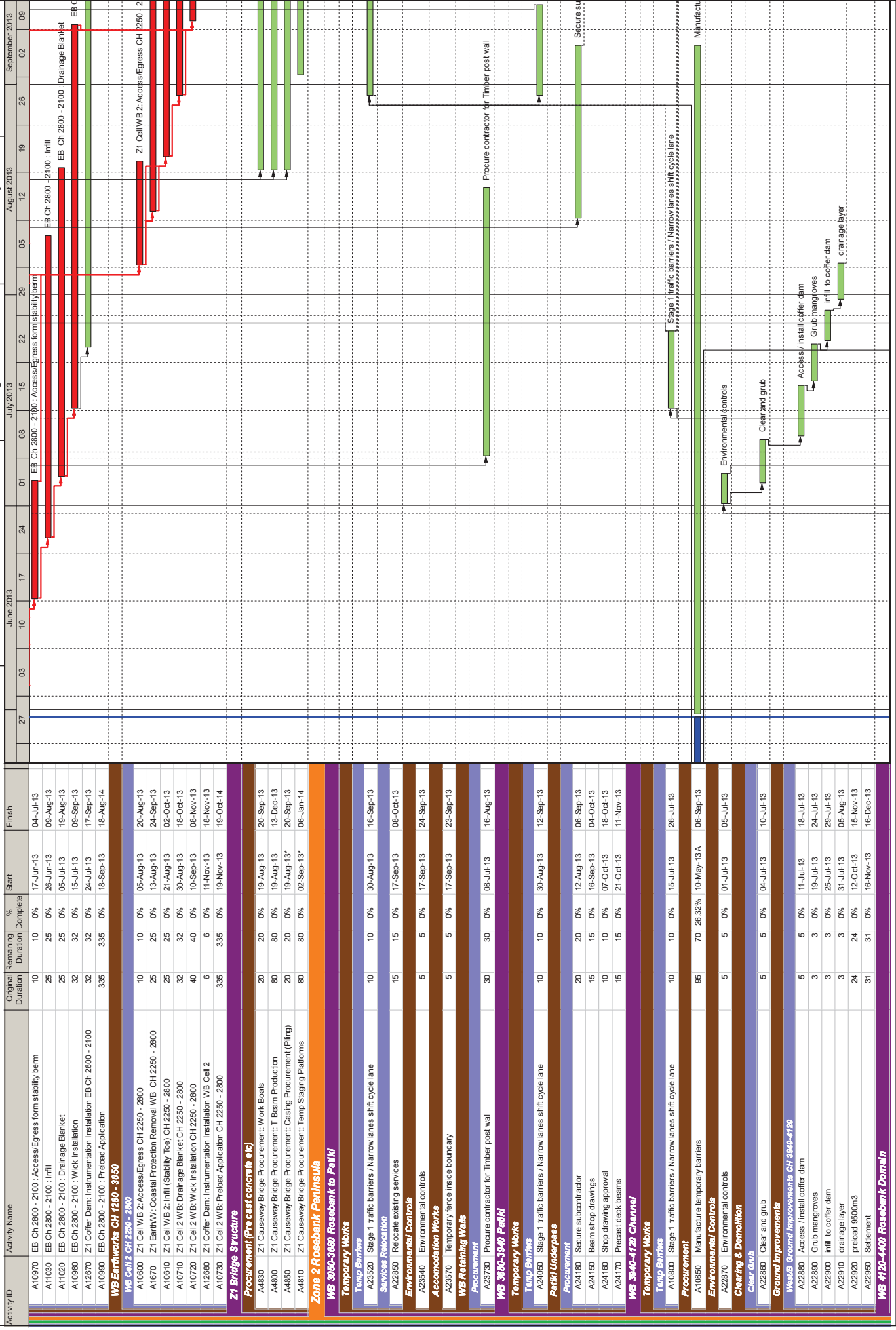


Activity Name	Original Duration	Remaining Duration	% Complete	Start	Finish
A1020 Z1 Cell 2: Coastal Protection Removal	1	1	0%	26-Aug-13	26-Aug-13
<b>EB Ccl 3 1740-1760</b>					
A9930 Z1 Cell 3: Access/Egress	1	1	0%	12-Aug-13	12-Aug-13
A9010 Z1 Cell 3: Finger Construction	2	2	0%	19-Aug-13	20-Aug-13
A9020 Z1 Cell 3: Coffier Dam Construction	2	2	0%	23-Aug-13	26-Aug-13
A10420 Z1 Cell 3: Coastal Protection Removal	1	1	0%	27-Aug-13	27-Aug-13
<b>EB Ccl 4 1800-1740</b>					
A9940 Z1 Cell 4: Access/Egress	1	1	0%	12-Aug-13	12-Aug-13
A9080 Z1 Cell 4: Finger Construction	2	2	0%	23-Aug-13	26-Aug-13
A9090 Z1 Cell 4: Coffier Dam Construction	2	2	0%	27-Aug-13	30-Aug-13
A10430 Z1 Cell 4: Coastal Protection Removal	1	1	0%	02-Sep-13	02-Sep-13
<b>EB Ccl 5 1850-1850</b>					
A9950 Z1 Cell 5: Access/Egress	1	1	0%	13-Aug-13	13-Aug-13
A9150 Z1 Cell 5: Finger Construction	2	2	0%	27-Aug-13	30-Aug-13
A9160 Z1 Cell 5: Coffier Dam Construction	2	2	0%	02-Sep-13	03-Sep-13
A10440 Z1 Cell 5: Coastal Protection Removal	1	1	0%	05-Sep-13	05-Sep-13
<b>EB Ccl 6 1900-1840</b>					
A9960 Z1 Cell 6: Access/Egress	1	1	0%	14-Aug-13	14-Aug-13
A9220 Z1 Cell 6: Finger Construction	2	2	0%	02-Sep-13	03-Sep-13
A9230 Z1 Cell 6: Coffier Dam Construction	2	2	0%	06-Sep-13	09-Sep-13
A10450 Z1 Cell 6: Coastal Protection Removal	1	1	0%	10-Sep-13	10-Sep-13
<b>EB Ccl 7 1940-1950</b>					
A9970 Z1 Cell 7: Access/Egress	1	1	0%	16-Aug-13	16-Aug-13
A9290 Z1 Cell 7: Finger Construction	2	2	0%	06-Sep-13	09-Sep-13
A9300 Z1 Cell 7: Coffier Dam Construction	2	2	0%	10-Sep-13	13-Sep-13
A10460 Z1 Cell 7: Coastal Protection Removal	1	1	0%	16-Sep-13	16-Sep-13
<b>EB Ccl 8 1400-1840</b>					
A9980 Z1 Cell 8: Access/Egress	1	1	0%	19-Aug-13	19-Aug-13
A9360 Z1 Cell 8: Finger Construction	2	2	0%	10-Sep-13	13-Sep-13
A9370 Z1 Cell 8: Coffier Dam Construction	2	2	0%	16-Sep-13	17-Sep-13
A10470 Z1 Cell 8: Coastal Protection Removal	1	1	0%	19-Sep-13	19-Sep-13
<b>EB Ccl 9 1440-1480</b>					
A9990 Z1 Cell 9: Access/Egress	1	1	0%	20-Aug-13	20-Aug-13
A9430 Z1 Cell 9: Finger Construction	2	2	0%	16-Sep-13	17-Sep-13
A9440 Z1 Cell 9: Coffier Dam Construction	2	2	0%	20-Sep-13	23-Sep-13
A10480 Z1 Cell 9: Coastal Protection Removal	1	1	0%	24-Sep-13	24-Sep-13
<b>EB Ccl 10 1500-1440</b>					
A10000 Z1 Cell 10: Access/Egress	1	1	0%	21-Aug-13	21-Aug-13
A9500 Z1 Cell 10: Finger Construction	2	2	0%	20-Sep-13	23-Sep-13
A9510 Z1 Cell 10: Coffier Dam Construction	2	2	0%	24-Sep-13	27-Sep-13
A10490 Z1 Cell 10: Coastal Protection Removal	1	1	0%	30-Sep-13	30-Sep-13
<b>EB Ccl 11 1540-1590</b>					
A10010 Z1 Cell 11: Access/Egress	1	1	0%	23-Aug-13	23-Aug-13
A9570 Z1 Cell 11: Finger Construction	2	2	0%	24-Sep-13	27-Sep-13
A9580 Z1 Cell 11: Coffier Dam Construction	2	2	0%	30-Sep-13	01-Oct-13
A12480 Z1 Cell 11: Coastal Protection Removal	1	1	0%	02-Oct-13	02-Oct-13
<b>EB Ccl 12 1590-1540</b>					
A10020 Z1 Cell 12: Access/Egress	1	1	0%	26-Aug-13	26-Aug-13
A9640 Z1 Cell 12: Finger Construction	2	2	0%	30-Sep-13	01-Oct-13
A9650 Z1 Cell 12: Coffier Dam Construction	2	2	0%	04-Oct-13	07-Oct-13
A10500 Z1 Cell 12: Coastal Protection Removal	1	1	0%	08-Oct-13	08-Oct-13
<b>EB Ccl 13</b>					
A10030 Z1 Cell 13: Access/Egress	1	1	0%	27-Aug-13	27-Aug-13
A9710 Z1 Cell 13: Finger Construction	2	2	0%	04-Oct-13	07-Oct-13
A9720 Z1 Cell 13: Coffier Dam Construction	2	2	0%	08-Oct-13	11-Oct-13
A10510 Z1 Cell 13: Coastal Protection Removal	1	1	0%	12-Oct-13	12-Oct-13
<b>EB S7B Earthworks CH 1260-3050</b>					
<b>EB Ccl 1 1900-2000</b>					
A1470 Z1 Cell 1: Infill	6	6	0%	30-Aug-13	09-Sep-13
A1480 Z1 Cell 1: Drainage Blanket	2	2	0%	10-Sep-13	12-Sep-13
A1490 Z1 Cell 1: Wick Installation	6	6	0%	13-Sep-13	23-Sep-13
A12620 Z1 Coffier Dam: Instrumentation Installation EB Cell 1	6	6	0%	24-Sep-13	01-Oct-13
A1500 Z1 Cell 1: Preload Application	335	335	0%	02-Oct-13	01-Sep-14
<b>EB Ccl 2 1700-1600</b>					
A10210 Z1 Cell 2: Infill	6	6	0%	27-Aug-13	05-Sep-13
A8970 Z1 Cell 2: Drainage Blanket	2	2	0%	06-Sep-13	09-Sep-13

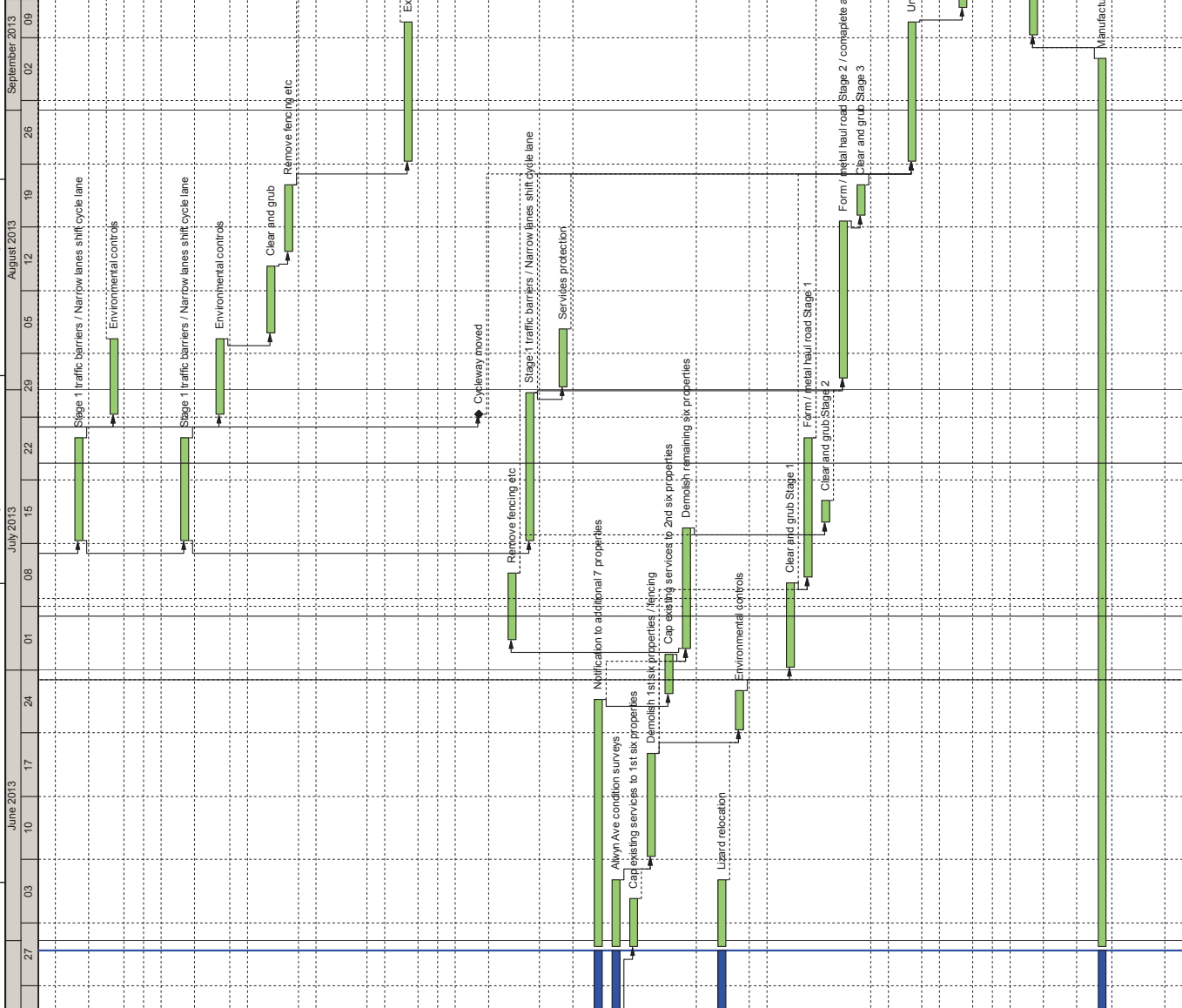


**TASK filters: #, 3 Month Lookahead.**

Activity ID	Activity Name	Original Duration	Remaining Duration	% Complete	Start	Finish
A8880	Z1 Cell 2: Wick Installation	6	6	0%	10-Sep-13	19-Sep-13
A1430	Z1 Cofferdam: Instrumentation Installation EB Cell 2	6	6	0%	20-Sep-13	27-Sep-13
A8990	Z1 Cell 2: Preload Application	335	335	0%	28-Sep-13	28-Aug-14
<b>EB Ch 3 1740-1740</b>						
A9030	Z1 Cell 3: Infill	6	6	0%	10-Sep-13	19-Sep-13
A9040	Z1 Cell 3: Drainage Blanket	2	2	0%	20-Sep-13	23-Sep-13
A9050	Z1 Cell 3: Wick Installation	6	6	0%	24-Sep-13	02-Oct-13
A12490	Z1 Cofferdam: Instrumentation Installation EB Cell 3	6	6	0%	02-Oct-13	10-Oct-13
A9060	Z1 Cell 3: Preload Application	335	335	0%	10-Oct-13	10-Sep-14
<b>EB Ch 4 1800-1740</b>						
A9100	Z1 Cell 4: Infill	6	6	0%	10-Sep-13	19-Sep-13
A9110	Z1 Cell 4: Drainage Blanket	2	2	0%	20-Sep-13	23-Sep-13
A9120	Z1 Cell 4: Wick Installation	6	6	0%	24-Sep-13	02-Oct-13
A12500	Z1 Cofferdam: Instrumentation Installation EB Cell 4	6	6	0%	02-Oct-13	10-Oct-13
A9130	Z1 Cell 4: Preload Application	335	335	0%	10-Oct-13	10-Sep-14
<b>EB Ch 5 1840-1850</b>						
A9170	Z1 Cell 5: Infill	6	6	0%	20-Sep-13	30-Sep-13
A9180	Z1 Cell 5: Drainage Blanket	2	2	0%	01-Oct-13	02-Oct-13
A9190	Z1 Cell 5: Wick Installation	6	6	0%	03-Oct-13	10-Oct-13
A12510	Z1 Cofferdam: Instrumentation Installation EB Cell 5	6	6	0%	11-Oct-13	18-Oct-13
A9200	Z1 Cell 5: Preload Application	335	335	0%	19-Oct-13	18-Sep-14
<b>EB Ch 6 1800-1840</b>						
A9240	Z1 Cell 6: Infill	6	6	0%	20-Sep-13	30-Sep-13
A9250	Z1 Cell 6: Drainage Blanket	2	2	0%	01-Oct-13	02-Oct-13
A9260	Z1 Cell 6: Wick Installation	6	6	0%	03-Oct-13	10-Oct-13
A12520	Z1 Cofferdam: Instrumentation Installation EB Cell 6	6	6	0%	11-Oct-13	18-Oct-13
A9270	Z1 Cell 6: Preload Application	335	335	0%	19-Oct-13	18-Sep-14
<b>EB Ch 7 1840-1850</b>						
A9310	Z1 Cell 7: Infill	6	6	0%	01-Oct-13	14-Oct-13
A9320	Z1 Cell 7: Drainage Blanket	2	2	0%	15-Oct-13	17-Oct-13
A9330	Z1 Cell 7: Wick Installation	6	6	0%	18-Oct-13	25-Oct-13
A12530	Z1 Cofferdam: Instrumentation Installation EB Cell 7	6	6	0%	29-Oct-13	05-Nov-13
A9340	Z1 Cell 7: Preload Application	335	335	0%	06-Nov-13	06-Oct-14
<b>EB Ch 8 1400-1840</b>						
A9380	Z1 Cell 8: Infill	6	6	0%	01-Oct-13	14-Oct-13
A9390	Z1 Cell 8: Drainage Blanket	2	2	0%	15-Oct-13	17-Oct-13
A9400	Z1 Cell 8: Wick Installation	6	6	0%	18-Oct-13	25-Oct-13
A12540	Z1 Cofferdam: Instrumentation Installation EB Cell 8	6	6	0%	29-Oct-13	05-Nov-13
A9410	Z1 Cell 8: Preload Application	335	335	0%	06-Nov-13	06-Oct-14
<b>EB Ch 9 1400-1480</b>						
A9450	Z1 Cell 9: Infill	6	6	0%	15-Oct-13	29-Oct-13
A9460	Z1 Cell 9: Drainage Blanket	2	2	0%	31-Oct-13	01-Nov-13
A9470	Z1 Cell 9: Wick Installation	6	6	0%	02-Nov-13	09-Nov-13
A12550	Z1 Cofferdam: Instrumentation Installation EB Cell 9	6	6	0%	11-Nov-13	18-Nov-13
A9480	Z1 Cell 9: Preload Application	335	335	0%	19-Nov-13	19-Oct-14
<b>EB Ch 10 1800-1440</b>						
A9520	Z1 Cell 10: Infill	6	6	0%	15-Oct-13	29-Oct-13
A9530	Z1 Cell 10: Drainage Blanket	2	2	0%	31-Oct-13	01-Nov-13
A9540	Z1 Cell 10: Wick Installation	6	6	0%	02-Nov-13	09-Nov-13
A12560	Z1 Cofferdam: Instrumentation Installation EB Cell 10	6	6	0%	11-Nov-13	18-Nov-13
A9550	Z1 Cell 10: Preload Application	335	335	0%	19-Nov-13	19-Oct-14
<b>EB Ch 11 1340-1350</b>						
A9590	Z1 Cell 11: Infill	6	6	0%	15-Oct-13	29-Oct-13
A9600	Z1 Cell 11: Drainage Blanket	2	2	0%	31-Oct-13	01-Nov-13
A9610	Z1 Cell 11: Wick Installation	6	6	0%	11-Nov-13	18-Nov-13
A12570	Z1 Cofferdam: Instrumentation Installation EB Cell 11	6	6	0%	19-Nov-13	26-Nov-13
A9620	Z1 Cell 11: Preload Application	335	335	0%	27-Nov-13	27-Oct-14
<b>EB Ch 12 1800-1840</b>						
A9660	Z1 Cell 12: Infill	6	6	0%	01-Nov-13	12-Nov-13
A9670	Z1 Cell 12: Drainage Blanket	2	2	0%	14-Nov-13	15-Nov-13
A9680	Z1 Cell 12: Wick Installation	6	6	0%	16-Nov-13	23-Nov-13
A12580	Z1 Cofferdam: Instrumentation Installation EB Cell 12	6	6	0%	25-Nov-13	02-Dec-13
<b>EB Ch 13</b>						
A9730	Z1 Cell 13: Infill	6	6	0%	01-Nov-13	12-Nov-13
A10200	DSM to Bridge abutment west 150 cots @ 5/d	30	30	0%	25-Nov-13	17-Jan-14
<b>EB Ch 2100 - 2000</b>						



Activity Name	Start	% Complete	Original Remaining Duration	Finish
<b>Temporary Works</b>				
<b>Temp Barriers</b>				
A23250 Stage 1 traffic barriers / Narrow lanes shift cycle lane	15-Jul-13	0%	10	26-Jul-13
<b>Environmental Controls</b>				
A23270 Environmental controls	29-Jul-13	0%	5	06-Aug-13
<b>Z3 WB 4400-4700 Whau East</b>				
<b>Temporary Works</b>				
<b>Temp Barriers</b>				
A24630 Stage 1 traffic barriers / Narrow lanes shift cycle lane	15-Jul-13	0%	10	26-Jul-13
<b>Environmental Controls</b>				
A24650 Environmental controls	29-Jul-13	0%	5	06-Aug-13
<b>Clearing &amp; Demolition</b>				
<b>Clear Grub</b>				
A24660 Clear and grub	07-Aug-13	0%	5	14-Aug-13
A24670 Remove fencing etc	16-Aug-13	0%	5	23-Aug-13
<b>Ground Improvements</b>				
<b>West/B Ground Improvements CH 4400-4700</b>				
A27360 Piling establishment	23-Nov-13	0%	2	25-Nov-13
A27370 Ground improvement columns 180 @ 10ld	26-Nov-13	0%	20	20-Dec-13
<b>Earthworks</b>				
<b>West/B Earthworks CH 4400-4700</b>				
A28680 Excavate to top of ground improvement platform	26-Aug-13	0%	10	10-Sep-13
<b>Z3 WB 4800-5000 Whau West</b>				
<b>Temporary Works</b>				
<b>Construction staging</b>				
A25920 Cycleway moved	29-Jul-13	0%	0	
<b>Temp Barriers</b>				
A25910 Remove fencing etc	04-Jul-13	0%	5	11-Jul-13
A25870 Stage 1 traffic barriers / Narrow lanes shift cycle lane	15-Jul-13	0%	10	31-Jul-13
<b>Services Relocation</b>				
A26240 Services protection	01-Aug-13	0%	5	07-Aug-13
<b>Enabling Works - Alwyn Avenue</b>				
A25950 Notification to additional 7 properties	27-Mar-13 A	70.77%	65	27-Jun-13
A26300 Alwyn Ave condition surveys	17-May-13 A	50%	10	07-Jun-13
A26320 Cap existing services to 1st six properties	31-May-13	0%	3	05-Jun-13
A25960 Demolish 1st six properties / fencing	10-Jun-13*	0%	10	21-Jun-13
A26440 Cap existing services to 2nd six properties	28-Jun-13	0%	3	02-Jul-13
A26250 Demolish remaining six properties	10-Jul-13	0%	10	16-Jul-13
<b>Environmental Controls</b>				
A26310 Lizard relocation	26-Apr-13 A	83.33%	30	07-Jun-13
A25990 Environmental controls	24-Jun-13	0%	5	28-Jun-13
<b>Clearing &amp; Demolition</b>				
<b>Clear Grub</b>				
A26500 Clear and grub Stage 1	01-Jul-13	0%	5	10-Jul-13
A26290 Form / metal haul road Stage 1	11-Jul-13	0%	10	26-Jul-13
A26650 Clear and grub Stage 2	17-Jul-13	0%	3	19-Jul-13
A26660 Form / metal haul road Stage 2 / complete access to WRB	02-Aug-13	0%	10	19-Aug-13
A26670 Clear and grub Stage 3	20-Aug-13	0%	3	23-Aug-13
<b>Ground Improvements</b>				
<b>West/B Ground Improvements CH 4800-5000</b>				
A26270 Undercut / install ground improvement and backfill	26-Aug-13	0%	10	10-Sep-13
<b>Earthworks</b>				
<b>West/B Earthworks CH 4800 - 5000</b>				
A26260 Earthworks Cut 2000m3 / fill 3000m3	12-Sep-13	0%	15	04-Oct-13
<b>EB 3950-3400 Rosebank to Pahi</b>				
<b>Temporary Works</b>				
<b>Temp Barriers</b>				
A24840 Temp barriers / sight screens / line marking	09-Sep-13	0%	10	24-Sep-13
<b>Services Relocation</b>				
A24830 Protect services	02-Oct-13	0%	10	15-Oct-13
<b>Procurement</b>				
A25930 Manufacture temporary barriers / ship	26-Apr-13 A	22.22%	90	06-Sep-13
<b>Environmental Controls</b>				
A24690 EB Environmental Contrs: CH 3780 - 4400 (Stage 1 WB)	25-Sep-13	0%	10	08-Oct-13
A24700 HPT - Identify sites	25-Sep-13	0%	5	01-Oct-13
<b>Clearing &amp; Demolition</b>				





Activity ID	Activity Name	Original Duration	Remaining Duration	% Complete	Start	Finish
<b>Clear Grub</b>						
A24710	Site Clearance CH 3050 - 3780 EB (Stage 1)	10	10	0%	02-Oct-13	14-Oct-13
<b>EB Retaining Walls</b>						
<b>Procurement</b>						
A4590	RW7 MSE wall procure subcontractor	20	20	0%	31-May-13	28-Jun-13
<b>EB 3300-3400 MSE slope RW7</b>						
A4620	Rock fill to lower levels	3	3	0%	21-Oct-13	24-Oct-13
A4480	EB: RW7 MSE Cut bench / drainage layer	5	5	0%	25-Oct-13	01-Nov-13
A20500	EB: RW7 MSE Slope 15 layers @1d	15	15	0%	02-Nov-13	22-Nov-13
A24850	EB: RW7 MSE Slope 4 layers @2d	10	10	0%	23-Nov-13	05-Dec-13
<b>Earthworks</b>						
<b>EastB Earthworks CH 6050 - 3400</b>						
A24750	EB enabling earthworks	3	3	0%	17-Oct-13	19-Oct-13
A24760	Engineered Fill EB CH 3050 - 3400 Cut 788 / Fill 3600m3 (Stage 1)	12	12	0%	26-Nov-13	11-Dec-13
<b>EB 3400-4400</b>						
<b>Temporary Works</b>						
<b>Temp Barriers</b>						
A24910	Temp barriers / sight screens	10	10	0%	25-Jul-13	12-Aug-13
<b>Services Relocation</b>						
A10840	Protect services EB	10	10	0%	24-Sep-13	07-Oct-13
<b>Environmental Controls</b>						
A20540	EB Environmental Contrls: Ch 3780 - 4400 (Stage 1 WB)	5	5	0%	16-Sep-13	20-Sep-13
A20850	HPT - Identify sites	5	5	0%	23-Sep-13	27-Sep-13
<b>Clearing &amp; Demolition</b>						
<b>Clear Grub</b>						
A2550	Site Clearance CH 3050 - 3780 EB (Stage 1)	5	5	0%	23-Sep-13	30-Sep-13
<b>Earthworks</b>						
<b>EastB Earthworks CH 6400 - 4400</b>						
A8160	EB temporary fill for Stage 2 TTM	10	10	0%	12-Oct-13	25-Oct-13
A8110	Engineered Fill EB CH 3400 - 4400 Cut 712m3 / Fill 6.560m3 (Stage 1)	20	20	0%	26-Oct-13	23-Nov-13
<b>Coastal Protection CH 3400 - 4400</b>						
A27660	Coastal protection	5	5	0%	25-Nov-13	30-Nov-13
<b>Z3 EB 4400-4700 Whau East</b>						
<b>Temporary Works</b>						
<b>Temp Barriers</b>						
A24920	Temp barriers / sight screens 300m	5	5	0%	31-May-13	10-Jun-13
A25170	Create working platform	5	5	0%	24-Jun-13	28-Jun-13
<b>Services Relocation</b>						
A24930	Protect services EB	5	5	0%	24-Jun-13	28-Jun-13
<b>Environmental Controls</b>						
A24940	EB Environmental Contrls: Ch 3780 - 4400 (Stage 1 WB)	5	5	0%	31-May-13	10-Jun-13
A24950	HPT - Identify sites	5	5	0%	13-Jun-13	21-Jun-13
<b>Clearing &amp; Demolition</b>						
<b>Clear Grub</b>						
A24980	Site Clearance CH 4400-4700 EB (Stage 1)	5	5	0%	13-Jun-13	21-Jun-13
<b>Ground Improvements</b>						
<b>EastB Ground Improvements CH 4400-4700</b>						
A25280	Excavate to top of ground improvement platform	9	9	0%	24-Jun-13	08-Jul-13
A24970	Piling establishment	1	1	0%	10-Jul-13	10-Jul-13
A24980	Ground improvement columns 140 @ 10ld	14	14	0%	11-Jul-13	05-Aug-13
A25030	Commence Bridge staging	0	0	0%	06-Aug-13	
<b>Earthworks</b>						
<b>EastB Earthworks CH 4400 - 4700</b>						
A25100	Create access into area	5	3	40%	15-May-13 A	05-Jun-13
A25040	Engineered fill 2,000m3	5	5	0%	12-Oct-13	18-Oct-13
<b>Coastal Protection CH 4400 - 4700</b>						
A25050	Coastal protection 300m	10	10	0%	19-Oct-13	02-Nov-13
<b>Stormwater</b>						
A25060	EB SW 140m / 5MHs / 2 outfalls	12	12	0%	04-Nov-13	19-Nov-13
<b>Pavement Construction</b>						
<b>EastB Permanent Pavement &amp; Surfacing CH 4400 - 4700</b>						
A25070	Subgrade trim / stabilise	10	10	0%	21-Nov-13	03-Dec-13
<b>Temporary Works</b>						
<b>Temp Barriers</b>						
A26230	Temp barriers / sight screens if required	3	3	0%	31-May-13	05-Jun-13

RW7 MSE wall procure subcontractor

Temp barriers / sight screens

Temp barriers / sight screens 300m

Create working platform

Protect services EB

EB Environmental Contrls: Ch 3780 - 4400 (Stage 1 WB)

HPT - Identify sites

Site Clearance CH 4400-4700 EB (Stage 1)

Excavate to top of ground improvement platform

Piling establishment

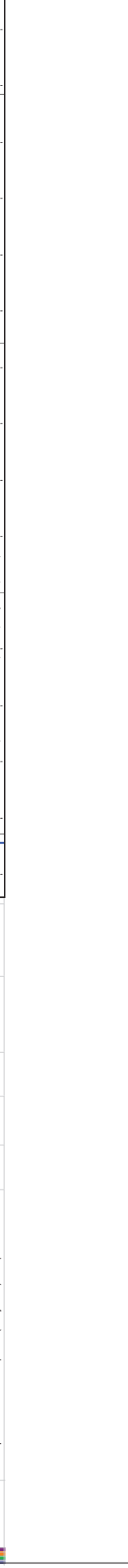
Ground improvement columns 140 @ 10ld

Commence Bridge staging

Create access into area

Temp barriers / sight screens if required

Activity ID	Activity Name	Original Duration	Remaining Duration	% Complete	Start	Finish
<b>Services Relocation</b>						
A2710	Services protection	5	5	0%	17-Jun-13	21-Jun-13
<b>Environmental Controls</b>						
A2720	Environmental controls	5	5	0%	06-Jun-13	14-Jun-13
A2780	HPT - Identify sites	5	5	0%	06-Jun-13	14-Jun-13
<b>Clearing &amp; Demolition</b>						
<b>Clear Grab</b>						
A2730	Clear and grub	3	3	0%	17-Jun-13	21-Jun-13
<b>Ground Improvements</b>						
<b>EasB Ground Improvements CH 4800-5000</b>						
A2740	Undercut / install ground improvement and backfill	15	15	0%	04-Jul-13	29-Jul-13
<b>Earthworks</b>						
<b>EasB Earthworks CH 4800 - 5000</b>						
A27870	Create access via Pony Club	10	3	70%	01-May-13 A	05-Jun-13
A27920	Create access into CMA	7	7	0%	24-Jun-13	02-Jul-13
A27150	Earthworks Cut 1366m3 / fill 2200m3	10	10	0%	31-Jul-13	16-Aug-13
A27850	Create working platform for staging	10	10	0%	31-Jul-13	16-Aug-13
<b>Z3 WB 4700-4800 Whau River Bridge</b>						
<b>Staging Installation</b>						
A26940	WB Staging (SW) to Spans 7 & 8 only (6 units)	18	18	0%	08-Oct-13	02-Nov-13
<b>Piling</b>						
A26360	Piles to Pier P2.G	5	5	0%	23-Nov-13	29-Nov-13
<b>Z3 EB 4700-4800 Whau River Bridge</b>						
<b>Procurement</b>						
A6320	Staging design	17	9	47.06%	14-May-13 A	13-Jun-13
A6280	Z3 Whau Bridge Procurement: T beam Production	80	80	0%	31-May-13	20-Sep-13
A6280	Z3 Whau Bridge Procurement: Temp Staging Platforms	30	30	0%	14-Jun-13	25-Jul-13
<b>Staging Installation</b>						
A6220	EB Staging Installation (Sig 1a - NE) 120m	38	38	0%	06-Aug-13	07-Oct-13
A26530	EB Staging Installation (Sig 1b - NW) 40m	14	14	0%	08-Oct-13	26-Oct-13
<b>Piling</b>						
A6230	Piles to East abutment P1.A	5	5	0%	12-Oct-13	18-Oct-13
A25490	Piles to Pier 1.B	3	3	0%	19-Oct-13	22-Oct-13
A25500	Piles to Pier 1.C	3	3	0%	24-Oct-13	26-Oct-13
A25510	Piles to Pier 1.D	3	3	0%	29-Oct-13	01-Nov-13
A25520	Piles to Pier 1.E	3	3	0%	02-Nov-13	05-Nov-13
A25530	Piles to Pier 1.F	3	3	0%	07-Nov-13	09-Nov-13
A25540	Piles to Pier 1.G	3	3	0%	11-Nov-13	14-Nov-13
A25550	Piles to Pier 1.H	3	3	0%	15-Nov-13	18-Nov-13
A25560	Piles to Abutment 1.J	3	3	0%	19-Nov-13	22-Nov-13
A25570	Trim 9 pier heads	10	10	0%	23-Nov-13	05-Dec-13
<b>Median Works 3400-3600 Pathki</b>						
<b>Traffic Services</b>						
<b>Sign Gantries</b>						
A25340	Z2 Traffic Services Procurement: WB & EB Gantries	80	80	0%	30-Sep-13	04-Feb-14
A25320	WB Gantry foundation at 3665	10	10	0%	30-Sep-13	11-Oct-13
<b>Median Works 3800-4000 Pathki to Whau East</b>						
<b>Traffic Services Procurement</b>						
A10960	Z2 Traffic Services Procurement: WB & EB Gantries	80	80	0%	30-Sep-13	04-Feb-14
<b>Z2 Temporary Works</b>						
<b>Construction staging</b>						
A3350	Z2 Temporary Works: Setup Zone 2 Facilities	10	10	0%	08-Jul-13	19-Jul-13
<b>Zone 3 Whau River</b>						
<b>Site Office establishment</b>						
A17920	Relocate staff to Construction Office	5	4	20%	31-May-13 A	06-Jun-13
A1530	Z3 Temp Works: Main Compound (Pony Club) Complete	0	0	0%	07-Jun-13	



## **Appendix C: SH16 Causeway Summary Construction Programme**

**Appendix D: SH16 Community Liaison Group Minutes-15 May 2013**

## Minutes of Meeting

<b>Purpose of Meeting</b>	<b>Causeway Upgrade Project Community Liaison Group (CLG) Meeting 3</b>		
<b>Project</b>	Causeway Upgrade Project		
<b>Prepared By</b>	Rachel Purdy		
<b>Place of Meeting</b>	Te Atatu Community Centre 595 Te Atatu Road	<b>Date</b>	15 May 2013
<b>Present:</b>	Community Liaison Group members Kevin Stevens (Causeway Alliance) Elizabeth Collins (Causeway Alliance) Rachel Purdy (Causeway Alliance) Greg McBride (Causeway Alliance)		
<b>Apologies</b>	Mark Evans (Causeway Alliance), Juliet Woodward (Causeway Alliance), Simon Paton (Causeway Alliance)		
<b>Distribution</b>	Website and by email to Community Liaison Group members		

<b>1.</b>	<b>Meeting Introduction</b>
	<ul style="list-style-type: none"> <li>- NZTA has strong customer focus.</li> <li>- CLG meetings are a three monthly forum through which information about the project can be provided to the community and an opportunity for concerns or issues to be raised.</li> <li>- There will be separate meetings for site or issue specific details</li> </ul>
<b>2.</b>	<b>Waterview Connection Project</b>
	<ul style="list-style-type: none"> <li>- Waterview Connection Project (WCP) is comprised of a number of packages: <ul style="list-style-type: none"> <li>o SH20 Waterview Tunnel and GNRI being undertaken by the Well Connected Alliance</li> <li>o SH16 Causeway Upgrade being undertaken by the Causeway Alliance</li> <li>o Te Atatu Interchange Upgrade package - tender underway. Works will commence late 2013</li> <li>o St Lukes Interchange Upgrade package - not tendered yet.</li> </ul> </li> </ul> <p>All packages will be completed in a similar timeframe prior to opening of the Waterview Tunnel and SH20 / SH16 connection in early 2017</p>
<b>3.</b>	<b>Overall Programme Overview</b>
	<ul style="list-style-type: none"> <li>- Causeway Alliance formed (an alliance between NZTA, AECOM, Coffey, Fulton Hogan, Leighton Contractors, Sinclair Knight Merz) has been appointed to deliver the project</li> <li>- Causeway construction beginning May 2013</li> </ul>

	<ul style="list-style-type: none"> <li>- Te Atatu Interchange tendering underway; construction due to start late 2013</li> <li>- Both projects due to be completed by late 2016</li> <li>- Waterview tunnels open early 2017</li> <li>- Updated construction methodology cross sections (with timeframes over the next 3.5 years)</li> </ul>
<b>4.</b>	<b>Causeway Upgrade – progress update</b>
	<ul style="list-style-type: none"> <li>- Iwi blessing held on 7 March</li> <li>- Progressing the design, management plans and reviewing programme</li> <li>- Te Atatu construction yard and offices – underway</li> <li>- Access to Whau bridge (north side) - underway</li> <li>- North Traherne Island – access established</li> <li>- Great North Road – access established</li> </ul>
<b>5.</b>	<b>Causeway Upgrade – next 2013 works start dates</b>
	<ul style="list-style-type: none"> <li>- Northern Traherne Island – clearing vegetation, start ground improvements heading east (May)</li> <li>- Alwyn Ave – house removal and earthworks for Whau bridge access track (May)</li> <li>- Great North Road – clearing / widen westbound onramp, progressing west (May)</li> <li>- Great North Road –clearing site eastbound (June)</li> <li>- Rosebank Domain – establish access/widen (July)</li> <li>- Southern Traherne Island – clearing/widen (August)</li> </ul>
<b>6.</b>	<b>Construction Yard and Offices – Te Atatu Road</b>
	<ul style="list-style-type: none"> <li>- Solid 2.4 m high plywood noise wall perimeter fence</li> <li>- Proposal for mural by local artist(s) along Te Atatu Road (in place of landscape planting)</li> <li>- Council approved and monitored management plans for noise, traffic, lighting and environment</li> <li>- Restricted vehicle movements at peak hour</li> <li>- Working closely with Te Atatu Pony Club</li> <li>- Prefab offices have arrived on site from Christchurch</li> </ul>
<b>7.</b>	<b>Whau Bridge access- Alwyn Avenue, Te Atatu</b>
	<ul style="list-style-type: none"> <li>- Temporary access from No. 12 Alwyn Avenue for construction vehicles to access Whau River Bridge</li> <li>- Avoids construction access from motorway at off-ramp, which is unsafe</li> <li>- Existing pedestrian/cycleway not affected</li> <li>- Remove 12 houses and clear site (from No.12 to No.36 Alwyn Avenue) – <ul style="list-style-type: none"> <li>o Disconnection of network utilities will commence Monday 20 May 2013</li> <li>o Demolition contractor will remove any recyclable materials from houses before they are removed from the site.</li> <li>o The sites will be progressively cleared once the dwellings are removed i.e. removal of fences and paths</li> </ul> </li> <li>- Minor earthworks for access track down to bridge and earth bund (mound)</li> <li>- Retain as many existing trees as possible</li> <li>- Final noise bund design and landscaping part of Te Atatu Interchange project</li> </ul>

	<ul style="list-style-type: none"> <li>- Construction traffic will be directed to exit Alwyn Ave via Bridge Avenue &gt; Braebank Lane &gt; Covil Avenue instead of turning into Te Atatu Road from Alwyn Avenue</li> </ul>
<b>8.</b>	<b>Proposed viewing platforms – Causeway</b>
	<ul style="list-style-type: none"> <li>- Additional mitigation to that required by the Marine Reserve Act Authority in order to mitigate effects of the reclamation on the Marine Reserve resulting in a reduction in the extent of the Marine Reserve. Includes: <ul style="list-style-type: none"> <li>o 3 viewing platforms along the Causeway;</li> <li>o Preparation of an Integrated Management Plan for Waterview by NZTA and Auckland Council, in consultation with local iwi, Department of Conservation (DoC) and environmental groups</li> <li>o Documenting local history and settlement of the Waterview area</li> </ul> </li> <li>- Initial concept for viewing platforms was developed in consultation with local iwi, DoC and Forest and Bird.</li> <li>- The three locations are yet to be confirmed – potential sites are the Whau River, Rosebank area and between the Causeway Bridge and Traherne Island. Causeway Alliance Landscape Architect is currently identifying potential locations</li> <li>- The concept design has been based on a number of principles: <ul style="list-style-type: none"> <li>o The need to recognise a range of users - cycling, pedestrians and people who want to sit and observe</li> <li>o Includes information boards – educational and information dissemination on local history and marine/bird life in the Marine Reserve</li> <li>o Appropriate materials and definition i.e. timber deck to differentiate from the shared path and discourage cyclists.</li> </ul> </li> <li>- Concept design options include semi-circle viewing platform providing 180° views with proposed seating or a linear platform.</li> <li>- Viewing platforms will not extend past the toe of the new motorway embankment rock revetment</li> <li>- Causeway Alliance is keen to hear feedback from the CLG on the design and location of the viewing platforms and will provide an update at the next meeting.</li> </ul>
<b>9.</b>	<b>Patiki Road Onramp – shared path underpass</b>
	<ul style="list-style-type: none"> <li>- Further design of the Patiki Road Underpass has been undertaken in accordance with the following principles: <ul style="list-style-type: none"> <li>o Clear and readable sight lines for cyclists</li> <li>o Anti-graffiti measures on walls</li> <li>o Rocky base under bridge discourages sitting</li> <li>o Lighting</li> <li>o Materials that respond to the local area and the wider SH16 design framework</li> </ul> </li> <li>- The underpass will have a broad curve for cyclists, it will be a relatively short distance (18m in length and 12m in width) and well lit</li> <li>- A fence will protect people from climbing up to the motorway</li> <li>- The underpass wing walls will be planted with climbing plants, abutments will have a corrugated surface and a rough rock surface (using rocks from the Causeway rock revetment) adjacent to the shared path to deter graffiti</li> </ul>
<b>10.</b>	<b>Questions/Comments from the CLG on the Causeway Upgrade Project</b>
	<p><i>Will a noise reduction fence be provided between the shared path and the motorway?</i></p> <p>A noise wall will be provided adjacent to the shared path along part of the length between the Great North Road Interchange and the Causeway Bridge, but not for the</p>

rest of the alignment. This is due to the vehicles in traffic lanes providing passive surveillance of the shared path as security. The swale drain adjacent to the shared path and the bus lane will provide further separation between the shared path users and the general traffic lanes. A 1.4m high general fence will be provided between the shared path and the motorway.

*The cycleway in the vicinity of Alwyn Avenue is very narrow and below the relevant standards. Will this be widened and the sightlines improved as part of the Project?*

Yes, the shared path will be upgraded along the entire alignment. The new nominal width will be 4m from Great North Road through to Te Atatu - this will include a 3m sealed shared path and a 0.5m shoulder on either side. The path will be 3m wide on the bridges (ie: no shoulders provided on bridges).

*Will the timber boardwalk section of the cycleway near the Rosebank offramp be upgraded?*

Yes, the timber structure will be rebuilt and will be wider than the existing structure, including balustrades and an upgraded surface.

*Has any consideration been given to rail instead of petrol vehicles?*

Discussions on this matter have taken place over many years, along with the potential for light rail or a busway (a future busway is mentioned in the Auckland Plan in the 25-30 year plan). This project will provide for more continuous and wider bus lanes.

*But trains are more efficient than other modes of transport.*

The provision of rail is outside the Project scope.

*Have you given consideration to raising the viewing platform by approximately 2m to allow for views to the north?*

Raising the viewing platform would not provide for universal access.

*You could raise a third of the platform with a set of stairs or have the viewing platform sloping.*

The Alliance will consider these suggestions.

*Is there an opportunity to provide a drinking fountain at the viewing platforms?*

The Alliance will consider this suggestion.

*Is there an opportunity to do better than the Board of Inquiry conditions, such as noise mitigation? Also the NZTA mandate is to promote sustainable outcomes with regards to walking and cycling. Could transparent barriers similar to those along SH1 through St Marys Bay be used to mitigate the effects of motorway noise on the viewing platforms, especially if seating is proposed?*

We need to balance security and noise concerns. Noise reducing pavement is one mitigation measure that will be implemented. The Alliance will consider this suggestion.

*Suggestion to locate the viewing platform where there will be opportunities for greater interaction with wildlife.*

The Alliance will note this when identifying potential locations for the platforms and will discuss specific locations with Department of Conservation, Iwi and environmental groups.



*Will cyclists share the same space with pedestrians on the shared path?*

Yes, but the shared path will be wider than the current cycleway.

*How many viewing platforms are proposed and what is the rough cost of these - \$10,000?*

Three decks are planned and the cost has not been confirmed.

*Is NZTA happy to pay for the viewing platforms but not pay for noise mitigation for houses in Alwyn Avenue? A court decision has confirmed that 35dB is an acceptable internal noise limit.*

The Board of Inquiry (BoI) conditions specify noise limits which the Alliance will comply with. The Alliance's noise expert predicts that your property in Alwyn Avenue will be in compliance with the BoI noise limits.

*A 1.8m mesh construction fence is proposed at Alwyn Avenue, yet a 2.4m plywood noise wall is proposed at the Te Atatu Pony Club and at Waterview – why the difference?*

Once the 12 houses are removed, a temporary earth bund 2-2.5m in height will be provided to mitigate construction and motorway noise effects at Alwyn Avenue. The bund will provide greater noise mitigation than a 2.4m plywood fence. The design of the final noise bund will be undertaken by the Te Atatu Interchange contractor (who is yet to be appointed) in consultation with Alwyn Ave residents.

*Can you confirm that the Te Atatu contractor will reshape and replant the bund and where the mesh fence will be positioned – on the road side or the other side?*

In accordance with the BoI conditions, further consultation will be undertaken with Alwyn Avenue residents on the final shape of the noise bund. We are unable to say if the bund will be reshaped and the Te Atatu Interchange programme is yet to be confirmed.

*The temporary bund and motorway work are not proposed for some time yet the houses will be demolished shortly. To mitigate the effects can the bund be moved closer to the source or the residents?*

The Te Atatu Interchange contractor will likely commence work on widening of the Interchange corner near Alwyn Avenue early on in the programme. The proposed location of the temporary bund is in the best location to avoid being in the way of the Te Atatu earthworks.

*It appears that you have engaged a lot with the Te Atatu Pony Club (TAPC) but the Alwyn Avenue residents have not been afforded the same level of engagement or interest.*

The Alliance has worked closely with the TAPC in relation to early works on land in Harbourview Reserve occupied by the Club and the use of this land for the construction yard. Communication with Alwyn Avenue residents was undertaken prior to the BoI process, particularly with those most affected by noise at the end of the road.

*Several residents advised that they were not communicated with prior to the BoI process.*

Residents will be engaged with over the coming months. Engagement in relation to

individual property inspections and condition surveys will commence shortly.

*What will happen if Alwyn Avenue residents experience noise issues during construction?*

The Alliance will monitor noise levels with on-site noise meters and will seek to undertake construction activities so they stay below the noise criteria contained within the BoI conditions. Residents can contact the State Highway freephone number, 0800 444 449, Elizabeth Collins or Kevin Stevens if any issues relating to noise arise during construction.

*Request for the Alliance to engage in consultation with Alwyn Avenue residents, including a site walkover and the identification of protected trees in the next week, given the demolition of houses is due to commence?*

Yes, a meeting can be organised on site within the next one to two weeks. [Note this meeting took place on site on Monday 20 May].

[Engagement with Alwyn Avenue residents was further discussed following the conclusion of the formal meeting presentation].

*Covil Avenue and Braebank Lane are residential streets, with Braebank Lane very narrow when cars are parked on both sides of the road. These streets provide access to the Te Atatu Boat Club with cars towing boats. In addition, the intersection of Covil Avenue and Braebank Lane is a bad corner. How much construction traffic will be using Covil Avenue and Braebank Lane? What will the sizes of construction vehicles be, and will this be safe?*

It is not planned to have construction traffic turning from Covil Avenue into Braebank Lane. Traffic will come from the motorway and would turn left into Bridge Avenue then left into Alwyn Avenue.

There will be a number of construction vehicle movements during the demolition of properties in Alwyn Avenue and when the Whau River Bridge concreting works are undertaken. Apart from these two periods, construction traffic levels are not anticipated to be that high.

*Can construction traffic not have direct motorway access to the rear of Alwyn Avenue?*

No, this is not considered safe.

*Can you confirm that there will be no trucks during peak hour?*

The Alliance will try to avoid construction traffic movements during peak hours.

*Will there be speed restrictions on the Causeway like there was for the Newmarket Viaduct Upgrade? It would be good if the traffic speed was permanently reduced to 80km/hour as this would enable motorists to enjoy the views over the water.*

During the construction phase of the Project, traffic will be temporarily reduced to 80km/hour. The design speed for the Project is 100km/hour given the motorway is relatively straight and has good sightlines.

*Can you confirm that the viewing platforms will be out to the Waterview Estuary and not to the Waitemata harbour? If this is the case, NZTA could save some money from the viewing platforms and give the money to Alwyn Avenue.*

The locations of the viewing platforms are yet to be confirmed in consultation with Doc,

Forest and Bird and iwi. Locations currently being investigated include a platform between the Causeway Bridge and Traherne Island, one in the Rosebank area and a further platform at the Whau River.

*Is there any provision at the Patiki Overbridge for people to catch buses from Patiki Road or do they have to get off and walk over the bridge?*

There are no plans to provide a bus stop on the opposite side of the motorway. There is a bus stop at the end of Patiki Road (by the turning loop).

Why are the houses in Alwyn Avenue being demolished and not trucked away?

This has been checked by house relocation contractors, who confirmed that the houses are not of the type or quality that they can be relocated. The demolition contractors will remove all recyclable materials from the houses prior to demolition.

*Following NZTA undertaking works to the cycleway on the corner of Te Atatu Road and Alwyn Avenue the drainage in this area has been affected and is affecting the growth of vegetation along the boundary of No. 6 Alwyn Avenue. Will anything be done about this?*

As part of the shared path upgrade along the length of the alignment in Te Atatu, the drainage and landscaping will be upgraded.

*You mentioned the options of planting along the boundary or painting a mural on the construction yard fence in the TAPC. Will the planting be along the entire fence line or just the Te Atatu Road frontage?*

It is proposed to plant mature trees along the Te Atatu Road frontage in accordance with the Bol conditions in order to mitigate the appearance of the plywood fence and to discourage graffiti. *What about the side of the fence nearest to the motorway where there is current graffiti – are there any plans to plant this side of the fence?*

No, but the Alliance will need to develop a strategy for avoiding graffiti on the fence, whether this be removal strategy, a mural or planting?

*Who would look at a mural? It won't be motorists given the scale of the mural and speed at which traffic moves along Te Atatu Road. A continuous row of trees may be a better option.*

*The Alliance will consider a mural compared to a row of trees and will present back to the next CLG meeting.*

*The Te Atatu junction is a busy stretch of road with a number of accidents so the mural could be distracting for motorists.*

Yes, it could be – the Alliance will consider this point.

*If a mural is painted on the fence, a suggestion would be to get students at Rutherford College to paint the mural as they are very talented young artists.*

Yes, involving local schools in the painting of a mural has been suggested to the Alliance.

*If you plant trees along the fence line, will these trees be temporary and require removal following construction?*

Yes, the trees are temporary and if Council requires them to be removed at the end of the project, when the Yard is disestablished (as part of an Open Space Restoration

	<p>Plan) the Alliance will look at replanting the trees elsewhere.</p> <p><i>Currently there is a sign at Gate A to the construction yard. Where will the second gate be located?</i></p> <p>There will only be one gate for the Causeway Alliance's Te Atatu Rd Yard location. Other gates will be located along the project itself and are for construction site traffic.</p> <p><i>Will the Te Atatu Interchange Upgrade Project contractor use the same gate?</i></p> <p>This is yet to be confirmed.</p> <p><i>Can you confirm whether the T2 lane at Pt Chevalier will be closed for 2 years.</i></p> <p>Yes, this is correct.</p> <p><i>Will we lose the Te Atatu T2 onramp lane as part of the construction works?</i></p> <p>At this stage we are not aware the lane will close.</p>
11.	<p><b>Liaison with the Community</b></p> <p>Liaison with the community for the SH16 Causeway Upgrade Project will include the following:</p> <ul style="list-style-type: none"> <li>- Community Liaison Group (CLG) meetings</li> <li>- Signage and State Highways freephone 0800 444 449</li> <li>- Causeway News email updates</li> <li>- Project website</li> <li>- Communication of upcoming work- media, advertising</li> <li>- Separate meetings for site or issue specific details</li> <li>- Communications and stakeholder manager, contact - <a href="mailto:elizabeth.collins@sh16causeway.co.nz">elizabeth.collins@sh16causeway.co.nz</a></li> </ul> <p>Contact details for related projects:</p> <p>Te Atatu Upgrade Project: <a href="mailto:Chandra.Perera@nzta.govt.nz">Chandra.Perera@nzta.govt.nz</a> Ph 928 8707</p> <p>Proposed Bus Interchange: <a href="mailto:simon.milner@aucklandtransport.govt.nz">simon.milner@aucklandtransport.govt.nz</a> Ph 447 4896</p> <p>Board of Inquiry – technical reports and consents: <a href="http://www.nzta.govt.nz/projects/wrr/publications-archive-enquiry.html">http://www.nzta.govt.nz/projects/wrr/publications-archive-enquiry.html</a></p>
12.	<p><b>Summary</b></p> <ul style="list-style-type: none"> <li>- The Causeway Alliance is working on detailed design to reduce environmental impacts and community disruption</li> <li>- Construction yard and site access in progress</li> <li>- Consultation will continue on the form and location of the proposed viewing platforms</li> <li>- Causeway Alliance is committed to working with the community through the CLG</li> </ul>

Appendix E SH16 Causeway Stakeholder Database Report May 2013

## Stakeholder Database report – May 2013

Date	Name	Issue and Resolution
3 May	Barbara Cuthbert	<p><b>Issue: Cycle Action Auckland communications.</b> Hey Elizabeth – you are doing a superb job. I love your latest blog, and had the chance to tell Tommy Parker’s right hand Capital Projects man, Tom, that you are doing a brilliant job. I was in at the NZTA for meetings all day – and one of the lighter moments was a chat with Tom at the lifts. What sort of feedback are you getting from your offer for cyclists to get in touch with you by email? I heard from a cyclist today that he was super impressed you called him to reply to a question, well after the end of the working day. Dedication! I like project newsletters, so keep me on the list, please. <b>Resolution by Elizabeth Collins, 3 May 2013:</b> compliment acknowledged and confirmation of five emails received from cyclists.</p>
9 May	Tommo Cuthbert-Ashmore	<p><b>Issue: Cycleway Signage.</b> Hi Elizabeth, I've been keeping an eye out for the signs as I ride to and from work and I've only noticed one at the end of the causeway. As we've discussed the sign itself is good, but it appears to be no bigger than about A4 and loses a lot of its impact because of this. I'd like to see them at least A3 size if not double that, as you just can't see them otherwise. And I'd like to see several more, or else the message will be lost on cyclists. Keep me posted. Thanks, Tommo.</p> <p><b>Resolution by Elizabeth Collins, 9 May 2013:</b> Many thanks, Tommo. Appreciate the feedback. The signs are A3 and there are eight of them. We ordered eight more on Tues, so 16 should be visible shortly. If the message is still not clear, please flick me another email and we'll get A2 signs made.</p> <p><b>Tommo replied (same day):</b> That sounds good. I'm often riding past them quickly and the visibility this last week has been awful in the wind and rain, which may explain my confusion over their size. But I'm glad to hear you're getting more made, I'll keep an eye out for them. Thanks, Tommo</p>
29 May	Annette Culpan to Phil Twyford, MP, and Carl Chenery, Auckland Transport. The email was forwarded to NZTA who forwarded it to Elizabeth Collins on 31 May.	<p>Dear Phil and Carl,</p> <p>I’m writing to you on behalf of my three year old son Noah, who would like to complain regarding the widening of the north-western motorway and in particular the implications for local bird life such as the pukeko.</p> <p>Initially my three year old son asked me to call the police regarding this, however I thought this would be a more appropriate avenue. Let me relay the nature of his complaint.</p> <p>I am a resident in Te Atatu Peninsula, and was driving down the motorway recently, when my three year old son Noah noticed the digger activity on the side of the north-western motorway, bowling over the trees and wetlands where the pukeko live. When he saw what was happening, Noah yelled out, ‘mum, quick, wind down my window’. He proceeded to have a good inspection peering out the window and stated emphatically, ‘oh no - that is NOT okay’.</p> <p>Noah then told me ‘I can hear the birds crying’ and ‘where will the pukeko go’ and finished off with ‘all the trees are gone’ (by which point he was nearly crying).</p> <p>This morning we had a long conversation regarding, ‘where would the pukeko go’ and whether moving to the other side of the motorway could be an option – likely problematic for a mostly-flightless bird and we both agreed the northern sunny side where they currently reside would be a much more pleasant place to live.</p> <p>Incredible that a three year old boy can so see clearly the devastation being imposing on the planet and it’s creatures.</p> <p>It is time for innovation and for fresh and sustainable approaches to the issues that face us - for solutions that nurture our planet, wildlife and preserve it for our children. I recently visited Sydney and was amazed at their public transport system (which I constantly used during my visit). On returning to Auckland, I was struck by the rude comparison - where driving is the norm and public transport options for most of the population are neither efficient or viable. It is time for change. Not on a small scale where we look at creating ‘more bus lanes’ but on a mass, green and sustainable scale.</p>

		<p>Thank you for your consideration.</p> <p>Hei konā Annette Culpan on behalf of my three year old son Noah and his pukeko pals</p> <p><b>Elizabeth's response of 31 May:</b> Kia ora Noah</p> <p>Please thank your Mummy very much for writing to Phil Twyford and to Carl Chenery to tell them that you have been thinking a lot about the changes that are taking place beside the northwestern motorway. I know that you are worried about the birds like me that live nearby that area, and it is great that you are wanting to help us to be safe – so, thank you very much.</p> <p>My name is Poi Pukeko and I thought I would reply to your message so you know what is happening to us and that we are all happy and well.</p> <p>The people who are making the motorway higher and wider between Great North Road and Te Atatu are engineers, designers and other workers called the Causeway Alliance. They are being very careful with their work near where we live and are looking after us carefully. They have been given permission to widen this particular part of the motorway after lots and lots of careful designing and planning, and with special permission from different groups (Iwi, Auckland Council, Department of Conservation, Forest and Bird, and the Harbourmaster).</p> <p>My bird friends and I have moved to an area nearby called Traherne Island where we are having a lovely time and have lots of greenery to settle in and where there's also lots of food to catch and eat. We are counted by special people every month to make sure that we are not being hurt in any way by the motorway building work.</p> <p>We hope you are keeping warm in this cold weather. We are all fine because we have lots of feathers, and plenty of shelter in the bushes on Traherne island.</p> <p>Thank you for letting us know of your concern for us, and please let your Mum know that she is very welcome to contact me again if she would like any other information about the Causeway Upgrade Project. In the meantime, the attached page of summary information about the project may be helpful.</p> <p>With best wishes to you and your Mum,</p> <p>Hei konā.</p> <p>Poi (aka Elizabeth) (Name, title and contact details all provided)</p>
25- 31 May	Five correspondents	Requested to have their names added to the database for email project updates, Causeway News. Actioned immediately.
calls	0800 444 449	Five calls were received by the freephone number service during May. Four were general requests for project information and one was a job seeker. This compares to zero calls received in March and April. All requests were actioned on the day they were received.