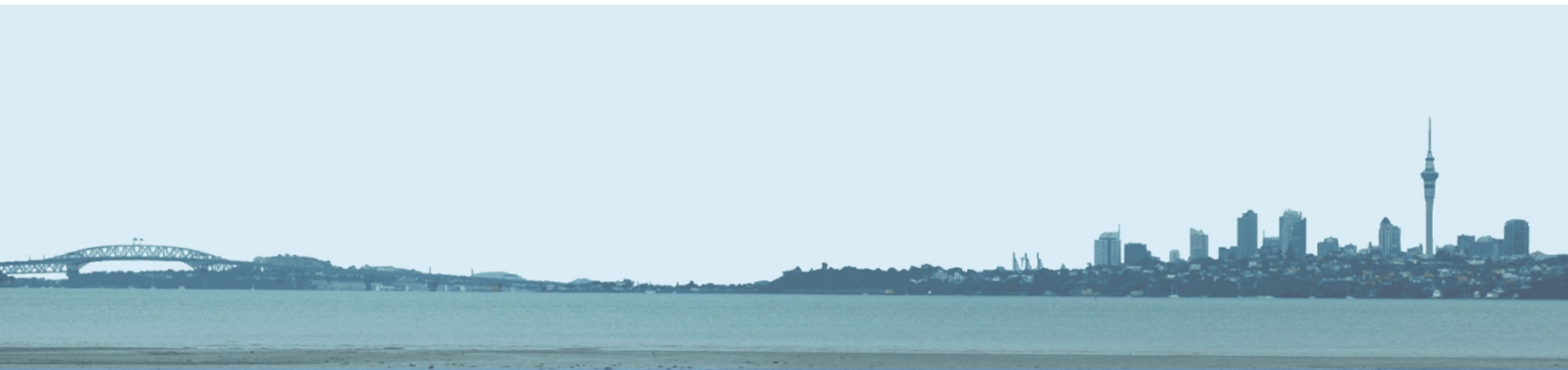


CAUSEWAY ALLIANCE
working for our **thriving** city



SH16 CAUSEWAY UPGRADE PROJECT



Monthly Environmental Report

June 2013

Document history and status

Revision	Date issued	Written By	Reviewed by	Approved by	Revision Status
A	12.07.2013	K Stevens	M Cassidy / E Collins	M Evans	For Issue

Distribution of copies

Revision	Purpose	Issued to
A	For Issue	Auckland Council

Printed:	17/07/2013 16:34
Last saved:	17/07/2013 16:34
File name:	K:\EN Environment\EN51 Construction\04 Council Reporting\Monthly Report\2013 06 Report\June 2013 Causeway Upgrade Project Monthly Environmental ReportECverA.docx
Author:	Kevin Stevens
Environmental Manager:	Michael Cassidy
Name of organisation:	Causeway Alliance
Name of project:	SH16 Causeway Upgrade Project
Document version:	Revision A

Contents

1.0	INTRODUCTION	7
1.1	PURPOSE OF THE REPORT	7
2.0	OVERVIEW of ACTIVITIES UNDERTAKEN	7
2.1	Environmental	7
2.2	Communications and Stakeholder Management	7
2.3	Key Stakeholder Milestones	7
2.4	Construction	7
3.0	MEETINGS, INSPECTIONS & EVENTS	8
4.0	ENVIRONMENTAL MONITORING	8
4.1	EARTHWORKS COMPLIANCE	8
4.2	CONSTRUCTION NOISE & VIBRATION	8
4.3	AIR QUALITY	8
4.4	CONTAMINATED SOIL	8
4.5	EROSION & SEDIMENT CONTROL	9
4.6	ARCHAEOLOGICAL	9
4.7	COASTAL MONITORING	9
4.8	MARINE MONITORING	9
4.9	ECOLOGICAL	9
5.0	CORRESPONDENCE ON CONSENT CONDITIONS	9
6.0	WORKS PROPOSED FOR JULY 2013	10

Appendix A: SH16 Causeway Alliance Construction Zone Plan

Appendix B: SH16 Causeway Alliance 3 Month Construction Programme

Appendix C: SH16 Causeway Summary Construction Programme

1.0 INTRODUCTION

1.1 PURPOSE OF THE REPORT

To provide Auckland Council with a monthly overview of construction progress and compliance activity on the SH16 Causeway Upgrade project.

This report describes and details the month of June 2013.

2.0 OVERVIEW of ACTIVITIES UNDERTAKEN

2.1 Environmental

Monthly meetings with Auckland Council compliance team have been instigated to allow regular catch up.

2.2 Communications and Stakeholder Management

The next quarterly Community Liaison Group (CLG) meeting has been arranged for Tuesday 13 August 2013 at Rutherford College Hall in Te Atatu, 7–9pm.

2.3 Key Stakeholder Milestones

- Meeting with five Te Atatu area school principals to discuss the project and options for developing children's learning streams in 2014.
- Pre-condition surveys for affected residents of Pt Chevalier are almost completed
- Sought shared path design feedback from Cycle Action Auckland and Disability Services
- Produced fortnightly Causeway News project updates to stakeholders and community
- Nine information-request calls were received to the State Highways info line during June compared to five in May and zero in the months previous to that.

No complaints were received during the period. Positive feedback has been received from residents and local stakeholders

2.4 Construction

- Work ready status reviews conducted and supportive of construction commencement
- Substantially completed 90-day plan for April to June, with good performance across all areas
- Issued new 90-day plan to the end of September
- Move to Taupuni site office completed and functioning well
- Substantially completed demolition of properties at Alwyn Ave – initial community response improving
- Completed haul road access to north-western corner of Whau River bridge

- Works to north Traherne Island continue with site clearance completed and construction of temporary stability berm well underway
- GNRI to SH16 westbound on-ramp – temporarily relocation of shared path achieved and earthworks commenced to embankment fill
- Key resources in place and performing well.

3.0 MEETINGS, INSPECTIONS & EVENTS

- 4 June 2013 Earthworks Compliance Inspection (Auckland Council / Causeway Alliance)
- 13 June 2013 Earthworks Compliance Inspection (Auckland Council / Causeway Alliance)
- 10 June 2013 Harbourview –Orangihina Park monthly bird roosting assessment (Causeway Alliance / Bioresarches)

4.0 ENVIRONMENTAL MONITORING

4.1 EARTHWORKS COMPLIANCE

Earthworks Compliance Inspections completed by Auckland Council officers on the 4 and 13 June 2013 and all recorded compliance scores of 1 (Full Compliance).

4.2 CONSTRUCTION NOISE & VIBRATION

SSNMP002 for GNRI temporary surfacing approved 4 June 2013

SSNMP003 for Alwyn Avenue house demolition approved 4 June 2013

SSNMP004 for shoulder wideing at Great North Road Interchange (GNRI) submitted for approval on 28 June 2013

4.3 AIR QUALITY

No air quality complaints or issues were received during the period.

Causeway Alliance Daily Site Reports did not indicate any air quality issues.

4.4 CONTAMINATED SOIL

No testing was undertaken during the period. Final CSMP has been approved by AC and developing a further component relating to verification testing of imported materials.

4.5 EROSION & SEDIMENT CONTROL

CESCP No 9: GNRI Areas 1 & 2 Geotechnical Investigations approved 21 June 2013.

4.6 ARCHAEOLOGICAL

Pre-ground breaking inspections for potential archaeological sites were undertaken in north Traherne Island and GNRI during the period.

4.7 COASTAL MONITORING

No coastal monitoring inspections were undertaken by Auckland Council officers during the period.

4.8 MARINE MONITORING

No marine monitoring was undertaken during the period.

4.9 ECOLOGICAL

Ongoing inspection for Significant and Valued vegetation was undertaken in Zone 1A (Traherne Island North).

No pre-clearance inspections for reptiles/lizards were undertaken in the period.

Monthly assessment of avian roosting locations was undertaken in Zone 3 (Harbourview-Orangihina Park).

5.0 CORRESPONDENCE ON CONSENT CONDITIONS

Board of Inquiry condition LV.1 - An extension of time for submission of the final Urban Design and Landscape Plans to Auckland Council until October 2013 was approved to allow further discussions with AC and the Community Liaison Group in August.

Board of Inquiry LV.10 – Auckland Council approved the removal of a notifiable tree (specimen gum tree) in Alwyn Avenue due to house demolition access requirements.

Install two tidal sensors - confirmation from Auckland Council that these can be installed both sides of the causeway and can be considered to be covered by the existing consents for causeway widening.

6.0 WORKS PROPOSED FOR JULY 2013

Refer Appendix B for 3 Month Construction Programme and Appendix C for SH16 Causeway Summary Programme.

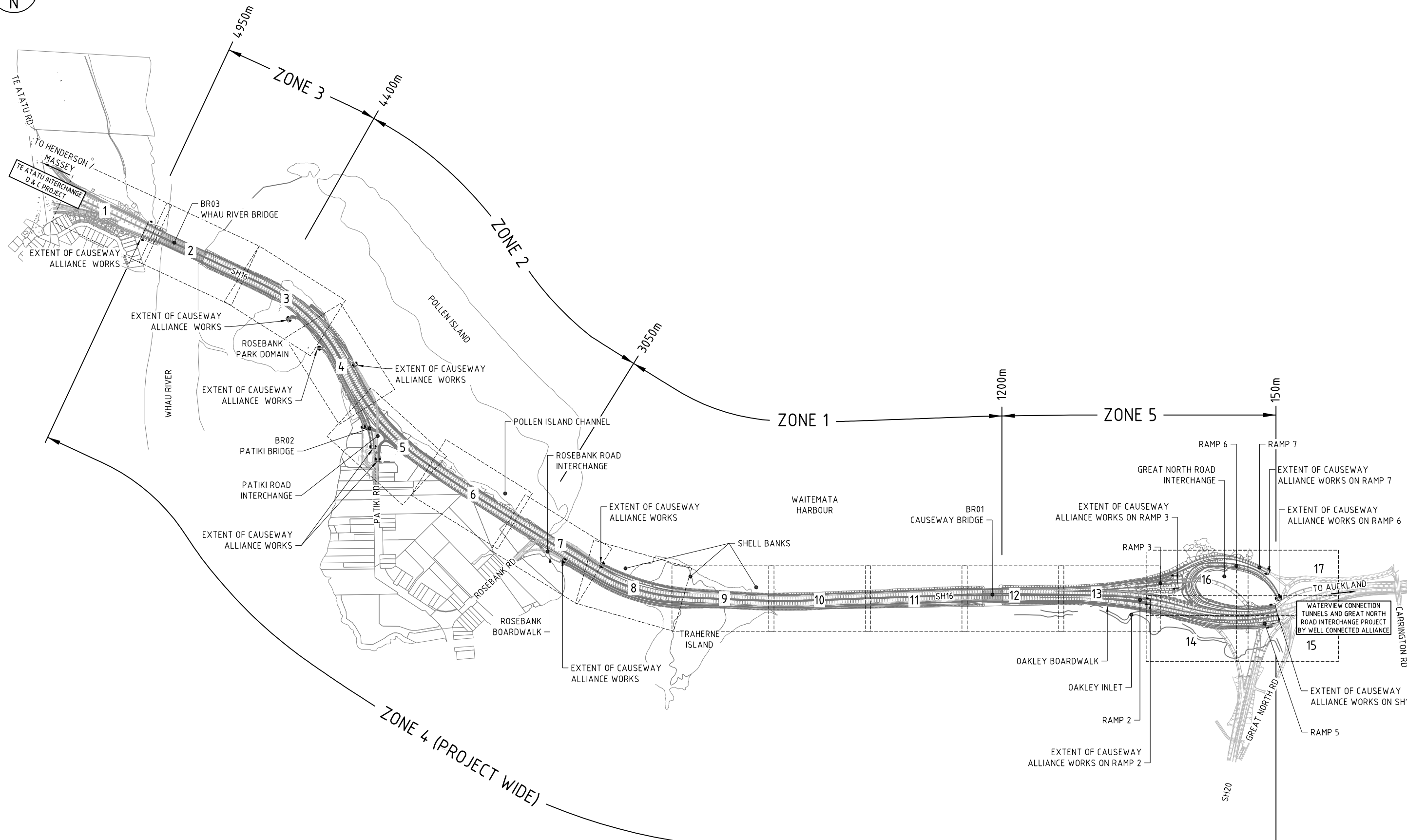
Zone 1 Causeway - continue installing the working platform and drainage blanket on north Traherne Island. Settlement monitoring instrumentation will be installed and wick drains installation is scheduled to begin towards the end of July.

Zone 2 / Zone 3 - Alwyn Ave house demolition will be completed in July. Lizard relocation will take place at the south-west Whau River bridge location, temporary barriers/sight screens and environmental controls installed and access down to the Whau bridge site will be created. Access and working platform on the north- east side of Whau River bridge will begin.

Zone 5 - Great North Road Interchange Areas will focus on cycleway relocation to the T2 lane, installation of temporary barriers, vegetation clearing and earthworks to widen the embankment in the vicinity of Oakley creek.

The environmental focus for July will continue to be on pre-inspections prior and during vegetation removal and ground clearance to ensure ecological and archaeological stand over requirements are met. The establishment and monitoring of sediment and erosion controls will also continue.

Appendix A: SH16 Causeway Alliance Construction Zone Plan



TE ATATU INTERCHANGE
D & C PROJECT

TO HENDERSON / MASSEY

1
EXTENT OF CAUSEWAY ALLIANCE WORKS

BR03
WHAU RIVER BRIDGE

2

EXTENT OF CAUSEWAY ALLIANCE WORKS

ROSEBANK PARK DOMAIN

EXTENT OF CAUSEWAY ALLIANCE WORKS

BR02
PATIKI BRIDGE

PATIKI ROAD INTERCHANGE

EXTENT OF CAUSEWAY ALLIANCE WORKS

WHAU RIVER

ZONE 3

4950m

4400m

ZONE 2

3050m

ZONE 1

1200m

ZONE 5

150m

ZONE 4 (PROJECT WIDE)

SH16

POLLEN ISLAND

POLLEN ISLAND CHANNEL

ROSEBANK ROAD INTERCHANGE

WAITEMATA HARBOUR

BR01
CAUSEWAY BRIDGE

EXTENT OF CAUSEWAY ALLIANCE WORKS ON RAMP 3

GREAT NORTH ROAD INTERCHANGE

RAMP 6

RAMP 7

EXTENT OF CAUSEWAY ALLIANCE WORKS ON RAMP 7

EXTENT OF CAUSEWAY ALLIANCE WORKS ON RAMP 6

EXTENT OF CAUSEWAY ALLIANCE WORKS

SHELL BANKS

EXTENT OF CAUSEWAY ALLIANCE WORKS

TRAHERNE ISLAND

ROSEBANK BOARDWALK

ROSEBANK RD

PATIKI RD

EXTENT OF CAUSEWAY ALLIANCE WORKS

8

9

10

11

SH16

12

13

14

16

17

WATERVIEW CONNECTION TUNNELS AND GREAT NORTH ROAD INTERCHANGE PROJECT BY WELL CONNECTED ALLIANCE

15

EXTENT OF CAUSEWAY ALLIANCE WORKS ON SH16

RAMP 5

OAKLEY BOARDWALK

OAKLEY INLET

RAMP 2

EXTENT OF CAUSEWAY ALLIANCE WORKS ON RAMP 2

SH20

GREAT NORTH RD

CARRINGTON RD

TO AUCKLAND

Appendix B: SH16 Causeway Alliance 3 Month Construction Programme

SH16 CAUSEWAY ALLIANCE

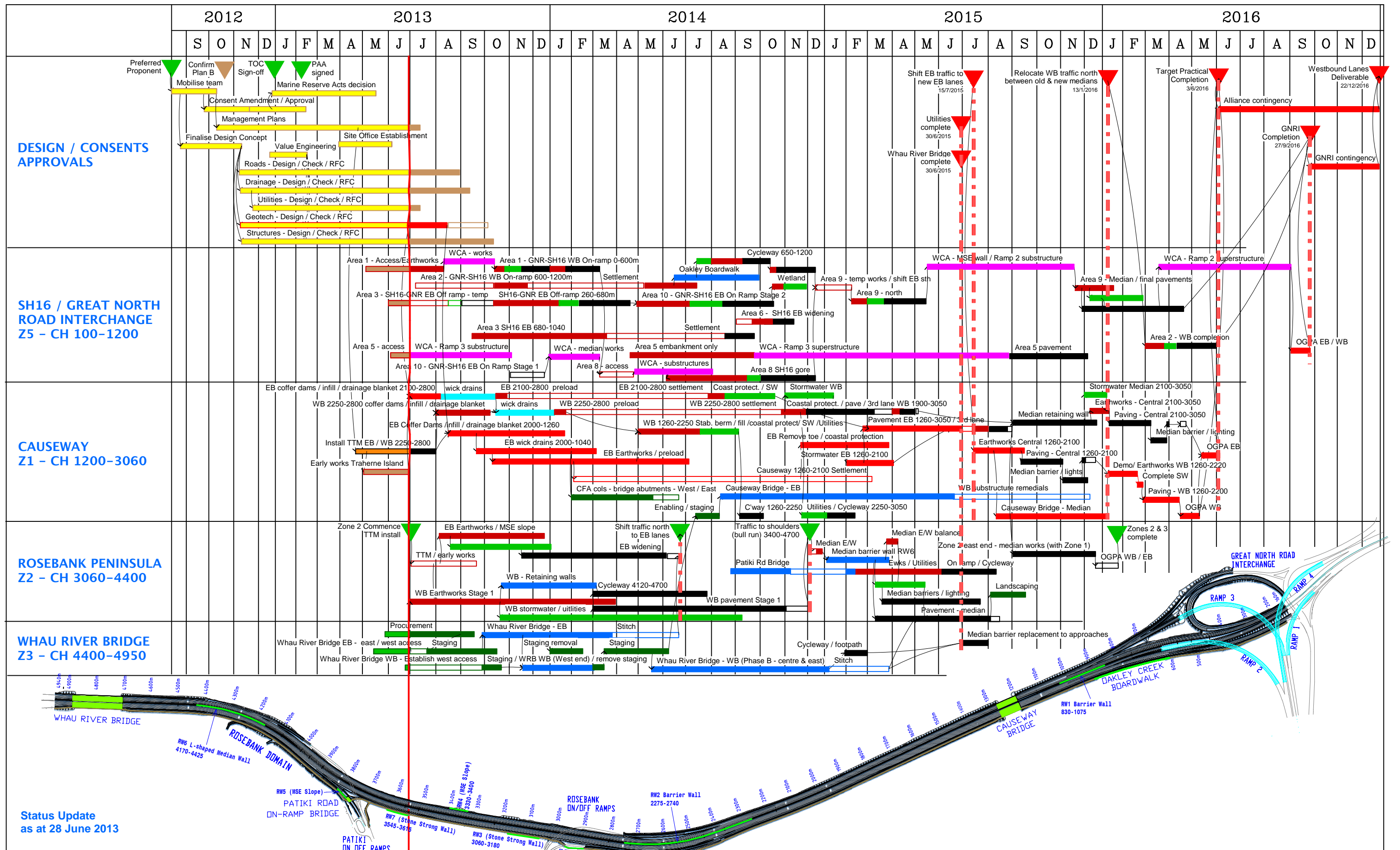
90 DAY "WORK STARTS" PLAN



This 90-Day plan is to be read in conjunction with the Project Summary Programme.

AREA	90-DAY MILESTONES														... AND BEYOND	
	01-Jul-13	08-Jul-13	15-Jul-13	22-Jul-13	29-Jul-13	05-Aug-13	12-Aug-13	19-Aug-13	26-Aug-13	02-Sep-13	09-Sep-13	16-Sep-13	23-Sep-13	30-Sep-13	07-Oct-13	14-Oct-13
Project Wide	. All Management Plans Complete - 1/7 . Road Barriers IFC Complete . KRAs Implemented - 22/7 . Commence Steel Barrier Installation - 15/7 . Winter Marine Monitoring Commences - 1/7					. Pavements Design IFC - 23/8 . SW Drainage Design Approved - 29/8 . Substantial Design Completion - 28/8 . IFC for Area West GI's . Close Hopetoun St Office - 30/8 . Winter Marine Monitoring Completed - 31/8 . Stability Berm Remedial Methodology Application - 16/9									. 100% All Cost Codes FCTC	
GNRI	. Enabling works complete for Area 3 handover - 5/7					. Divert Share Path, GNR WB to Causeway Br - 5/8 . Enabling works complete for Area 1 handover - 12/8				. Commence earthworks to Area 2 - 12/9				. Commence temp EB off ramp 23/9 . Commence Area 3 EB widening 7/10		
ZONE 1	. Traherne Is Instrumentation Installed - 20/7					. Wick Drain Installation Commences - 29/7 . Remove existing trial embankment - 5/8				. Commence fingers / coffer dams - 19/8 . 1200-2100 Zone 1 GI Package IFC - 15/8 . Rosebank culvert embankment designation approved - 26/9 . Commence Embankment Fill 16/9				. Complete Wick Drains to Traherne Island 30/9		
AREA WEST	. North East Access to WRB Complete - 8/7					. TTM to EB shoulder WRB Complete - 7/8 . Raceway Powerlines relocated - 29/7				. Yard 2 Established - 12/8 . Commence works to Raceway Channel - 12/8 . Alwyn Ave Access: WRB SW Complete - 30/8 . South Eastern Access established WRB - 10/9 . Rosebank contaminated fill consents approved - 26/9				. Consent for Raceway RW Approved - 1/10 . WRB south western GI complete - 4/10		
STRUCTURES	. WRB Seismic & Push-over Analysis Resolved - 5/7 . Temp Staging Procurement Finalised - 15/07 . Reinforcing procurement completed - 19/07 . Alwyn Ave Demolition Complete - 22/07					. Commence Vibro Concrete Columns NE Whau - 5/8				. VCCs NE Whau Complete - 2/09 . Commence Temp Staging WRB - 6/9 . WRB IFCs 26/8						

Appendix C: SH16 Causeway Summary Construction Programme



SH16 CAUSEWAY SUMMARY PROGRAMME

KEY

Design / preconstruct	Drainage / Utilities
Temporary Works etc	Structures
Earthworks	Pavement / barriers
Critical	WCA access

G	Revision G / Design 85%	5/7
F	Revision F	26/4
E	Revision E	5/4
A	Draft 2	
No	Revision	App Date



Date	5/12/12	Job No	
Drawn	CWB	Job No	426
Programme No		Rev No	
101		G	