



# Napier-Hastings



In 2010 Hastings was selected as one of New Zealand's two walking and cycling model communities. The result was the successful iWay programme which saw the construction of over 108 kilometres of new walking and cycling pathways. Supported by an encouragement campaign, iWay quickly became widely recognised as an innovative programme that reversed the trend of declining cycling rates.

Building on local experience and lessons learnt since 2010, the Hastings iWay programme will now be extended across Napier, developing a strong commuter cycling route between Napier and Hastings.

Napier has a unique opportunity to create a largely off-road cycle network using drainage reserves that would transform cycling in the city.

Napier's six-year programme of investment totalling around \$6m will be delivered in four years using investment from the **Urban Cycleways Fund**. Hastings will further develop its existing network through resolving connectivity and safety issues. Similarly, their six year programme totalling around \$5m will be delivered in four years using the **Urban Cycleways Fund**.



Cycleways refers to both on and off-road facilities

# Napier

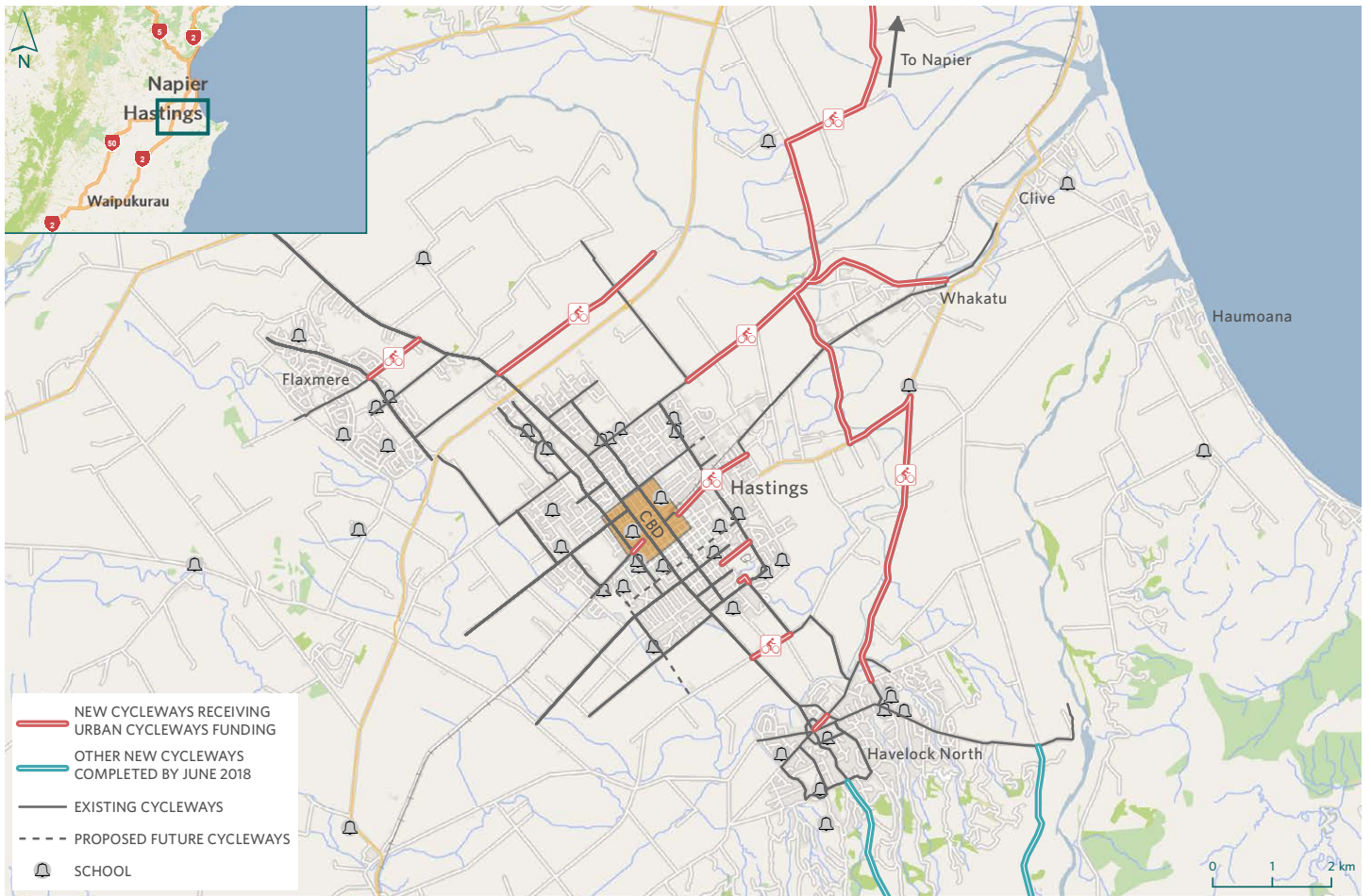
## iWAY NAPIER EXTENSION

This project will provide 36.5km of both on-road cycle lanes and wide, off-road pathways to complete the local network throughout Napier, connecting residential areas with employment areas, schools and education centres, reserves and recreational areas.

**Benefits:** The Napier iWay network provides a unique opportunity to use a series of wide storm drainage reserves through the urban area to create wide, off-road pathways, and will offer safer and connected routes for people to cycle to work, and for over 8,000 students who live within 500m of the routes to cycle to schools. These routes will form the backbone of the cycle network, largely separated from traffic, with the potential to attract an increased demand for cycling. The network is expected to attract around 700 new riders each day.

Construction is anticipated to begin in late 2015 and be completed by 2018.

TOTAL ESTIMATED PROJECT COST	URBAN CYCLEWAYS FUND SHARE	NATIONAL LAND TRANSPORT FUND SHARE ESTIMATED	LOCAL SHARE ESTIMATED
\$5.16 million	\$1.72 million	\$1.75 million	\$1.69 million



Cycleways refers to both on and off-road facilities

# Hastings

## iWAY HASTINGS

This project will provide 18km of on and off-road cycling routes, providing a connection between Napier and Hastings and links between residential areas, schools and employment areas, including a connection between north-eastern Hastings with the industrial area of Whakatu. The project will also connect Havelock North to State Highway 2 heading north, and south to Te Mata Park.

**Benefits:** This project will strengthen the network links in areas that still need attention, and provide safer and more connected routes for the growing numbers of users. These improved links will be particularly valuable to school children and adults with little previous cycling experience. The completed network is expected to attract over 350 new riders each day, with over 1,500 riders each day in total.

Construction is anticipated to begin in late 2015 and be completed by 2018.

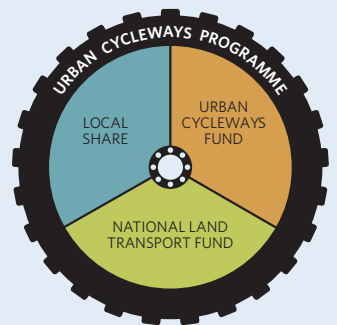
TOTAL ESTIMATED PROJECT COST	URBAN CYCLEWAYS FUND SHARE	NATIONAL LAND TRANSPORT FUND SHARE ESTIMATED	LOCAL SHARE ESTIMATED
\$3.75 million	\$1.15 million	\$1.4 million	\$1.2 million

## URBAN CYCLEWAYS PROGRAMME

The Urban Cycleways Programme, comprising shared investment from the Urban Cycleways Fund, the National Land Transport Fund and local councils, enables key, high-value urban cycling projects to get underway around the country over the next three years, while improving cycle safety and supporting more connected cycle networks.



For more information, visit our website  
[www.nzta.govt.nz/UCP](http://www.nzta.govt.nz/UCP)



*Working together to make urban cycling a safer and more attractive transport choice*



**New Zealand Government**