

Schedule 10: Completion Requirements

General

1. Definitions

For the purposes of this Schedule 10, the following terms have the following meanings:

Initial Works means all works comprising the P2Wk Project excluding the design and construction of the MLR Infrastructure;

MLR Infrastructure Works means the MLR Infrastructure and any re-works to the Northern Intersection (as defined in Schedule 13 (Performance Regime)) and as further defined in CN(MLR); and

Temporary Connection means the works undertaken within the Initial Works to allow the roadway to be open without the MLR Infrastructure being completed.

2. Independent Reviewer Actions

The following are descriptions of the Independent Reviewer Actions utilised in the following tables to describe the extent of the actions the Independent Reviewer is required to take in relation to the testing of each element.

2.1 Independent Reviewer Action 1

Independent Reviewer receives (whether electronically or physically, at the option of the Contractor) all Contractor records (e.g., drawings (Final Design Documentation, plans, quality assurance (**QA**) records, test results, Producer Statements, other certifications received by the Contractor from 3rd parties), then reviews a representative sample to confirm they are complete, appropriate and are in accordance with applicable Project Agreement requirements. The Independent Reviewer does not verify design.

That is, through representative sampling, audits and physical inspection (as required by the relevant Works Completion Test or Close-out Test), the Independent Reviewer is required to confirm the as-built works:

- are of appropriate quality, by reference to the Project Agreement requirements;
- are in accordance with the Final Design Documentation, or any changes to the Final Design Documentation are appropriately addressed (e.g., design changes due to encountered site conditions);
- (once the as-built documentation is received) are in accordance with the as-built documentation; and
- tests have been satisfactorily completed in line with the Finalised Inspection and Test Plans, such that any anomalies in test results or approach are satisfactorily addressed and closed-out, including via re-test or alternative testing, as appropriate and as in line with Action 3 below.

In undertaking the above, the Independent Reviewer is not required to confirm that the Final Design Documentation complies with the Works Requirements.

Notwithstanding the above, for this Review Action 1 the Independent Reviewer must also receive evidence of the Auckland Council's confirmation that the completed Initial Works and the completed MLR Infrastructure Works (as the case may be) are in full compliance with the relevant RMA Conditions.

2.2 Independent Reviewer Action 2

Independent Reviewer receives evidence of transmittal of Contractor documentation to the Transport Agency.

2.3 Independent Reviewer Action 3

Independent Reviewer attends and witnesses a representative sample of tests undertaken by the Contractor. Testing will be in accordance with the Finalised Inspection and Test Plans. With the exception of any testing identified for completion by the Independent Reviewer within Schedule 10, the Independent Reviewer is not required to undertake its own testing, however it retains the right to:

- (a) require that the Contractor undertakes re-tests where:
 - (i) the results of the initial testing are unsatisfactory and/or fail to meet the required criteria in accordance with the Finalised Inspection and Test Plans; or
 - (ii) where the Independent Reviewer, acting reasonably, has concerns with the conduct of the testing;
- (b) witness/observe any test or re-test undertaken by the Contractor;
- (c) instruct an additional alternative test, where the initial testing (as per the Finalised Inspection and Test Plans) has not been satisfactorily complied with, and provided that any such test is consistent with the purpose and intent of the original test; and
- (d) undertake its own testing (itself or through a third party) where it considers this to be required in the circumstances, with prior notification to the Contractor and the Transport Agency, and provided that any such test is consistent with the purpose and intent of the original Works Completion Test (**WCT**) or Close-out Test (**COT**) and/or test(s) contained in the Finalised Inspection and Test Plans.

2.4 Independent Reviewer Action 4

Independent Reviewer undertakes a visual inspection of completed Initial Works or completed MLR Infrastructure Works as required in the relevant tests set out below.

Note: The Independent Reviewer will have full access to the Contractor's electronic document management system (**EDMS**) throughout the construction and close-out phases. This will hold all records discussed in Action 1 above. The Contractor's Construction Sub-contractor will also provide the Independent Reviewer with appropriate training, as required to facilitate the Independent Reviewer's use of the EDMS.

Part 1 – Initial Works

3. Road Opening Works Completion Tests

- 3.1 The Contractor will conduct the Road Opening Works Completion Tests set out in Appendix A in accordance with clause 29.3 (Works Completion) of the Base Agreement.

- 3.2 If the parties agree any Deferred Works utilising the process contained in clause 29.3A:
- (a) any references to the performance of the Initial Works in Appendix A shall be deemed to exclude the Deferred Works (but only in respect of the Works Completion Tests (or parts thereof) which relate to those Deferred Works as identified through the process contained in clause 29.3A);
 - (b) any additional criteria which are required to be added to any Works Completion Tests in Appendix A to verify the completion of any work (including any additional work) agreed as required to meet the criteria in 29.3A(a) pursuant to clause 29.3A, shall be deemed to be included in the relevant Works Completion Tests in Appendix A; and
 - (c) the Road Opening Completion Tests (or parts thereof) which but for this clause would have applied to the Deferred Works shall become Full Works Completion Tests (but only in relation to the Deferred Works).

4. **Full Works Completion Tests**

- 4.1 The Contractor will conduct the Full Works Completion Tests set out in Appendix B or which become Full Works Completion Tests in accordance with clause 29.3A and paragraph 3.2, above in accordance with clause 29.3 (Works Completion) of the Base Agreement.
- 4.2 Any Deferred Works which were not required to be completed for the Road Opening Works Completion Tests pursuant to clause 3.2 of this Schedule, shall be required for the satisfaction of the Full Works Completion Tests.

Part 3 – MLR Completion

5. **MLR Completion Tests**

The Contractor will conduct the MLR Completion Tests set out in Appendix C in accordance with clause 29.3 (Works Completion) of the Base Agreement.

Part 4 – Close-out

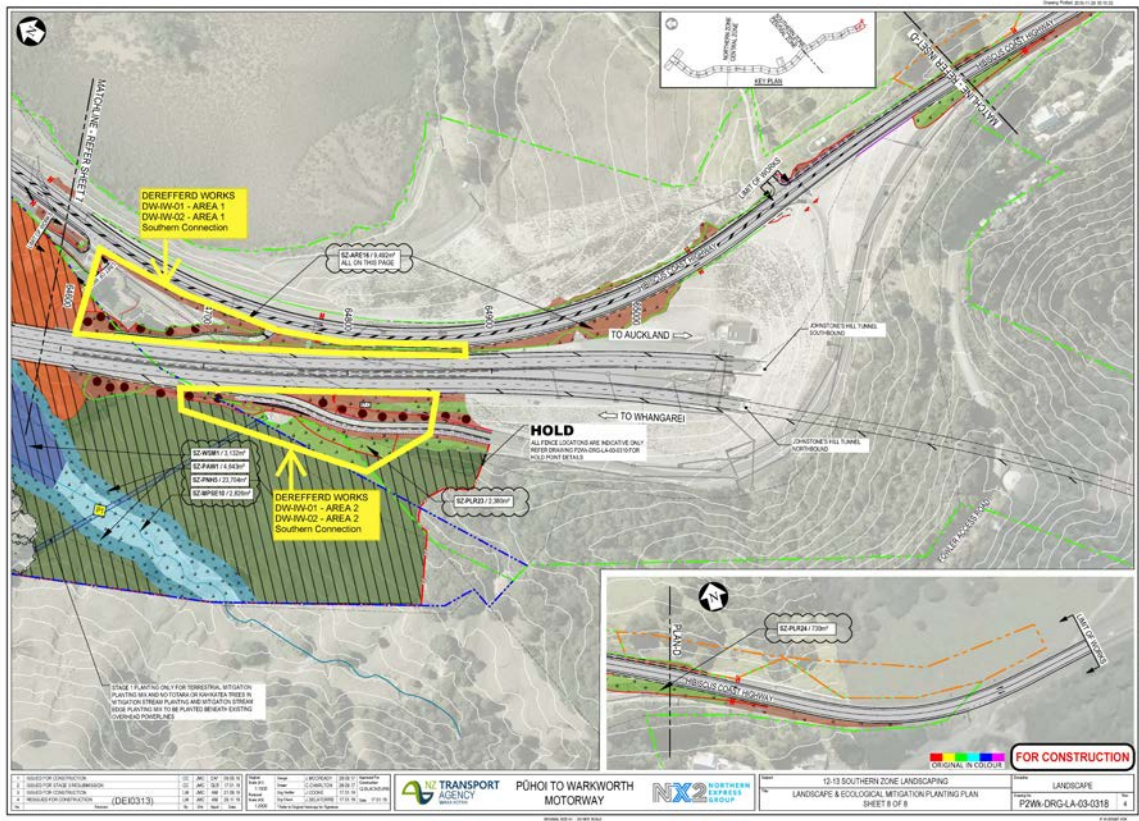
6. **Close-out Tests**

The Contractor will conduct the Close-out Tests set out in Appendix D in accordance with clause 29.7 (Close-Out) of the Base Agreement.

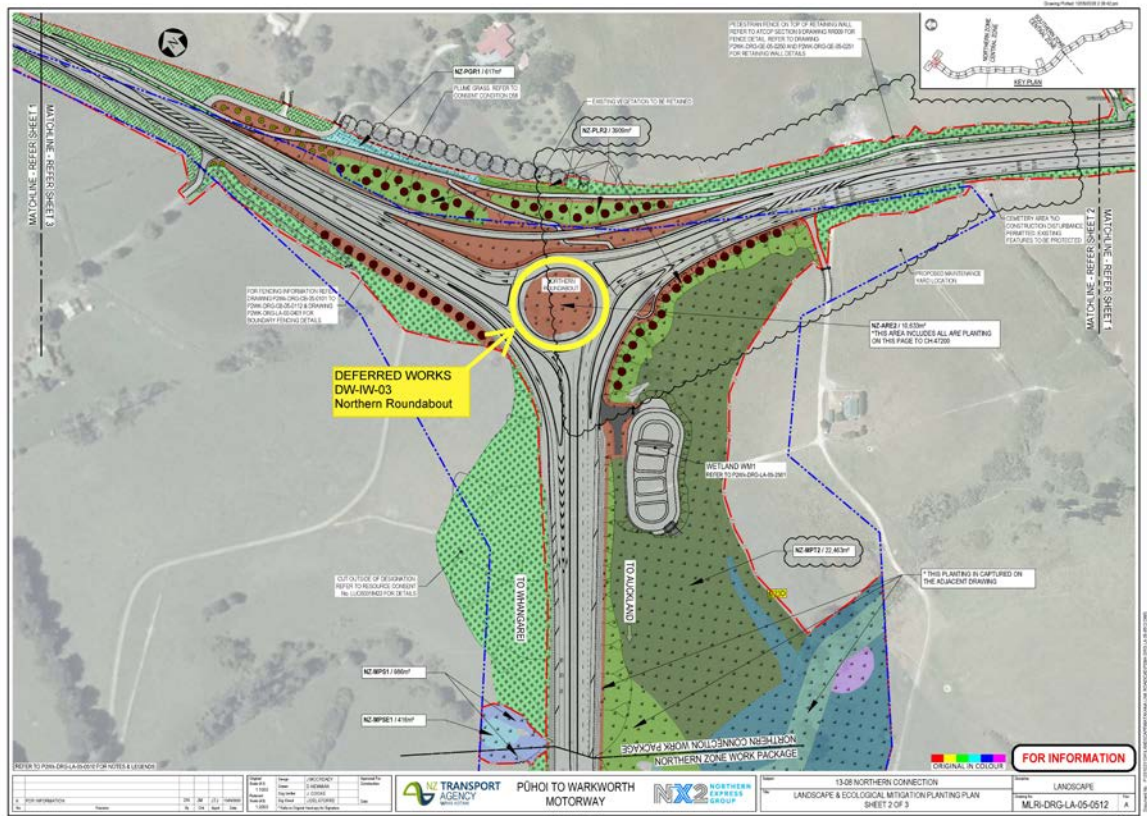
Part 5 – Deferred Works Areas

7. Deferred Works Maps

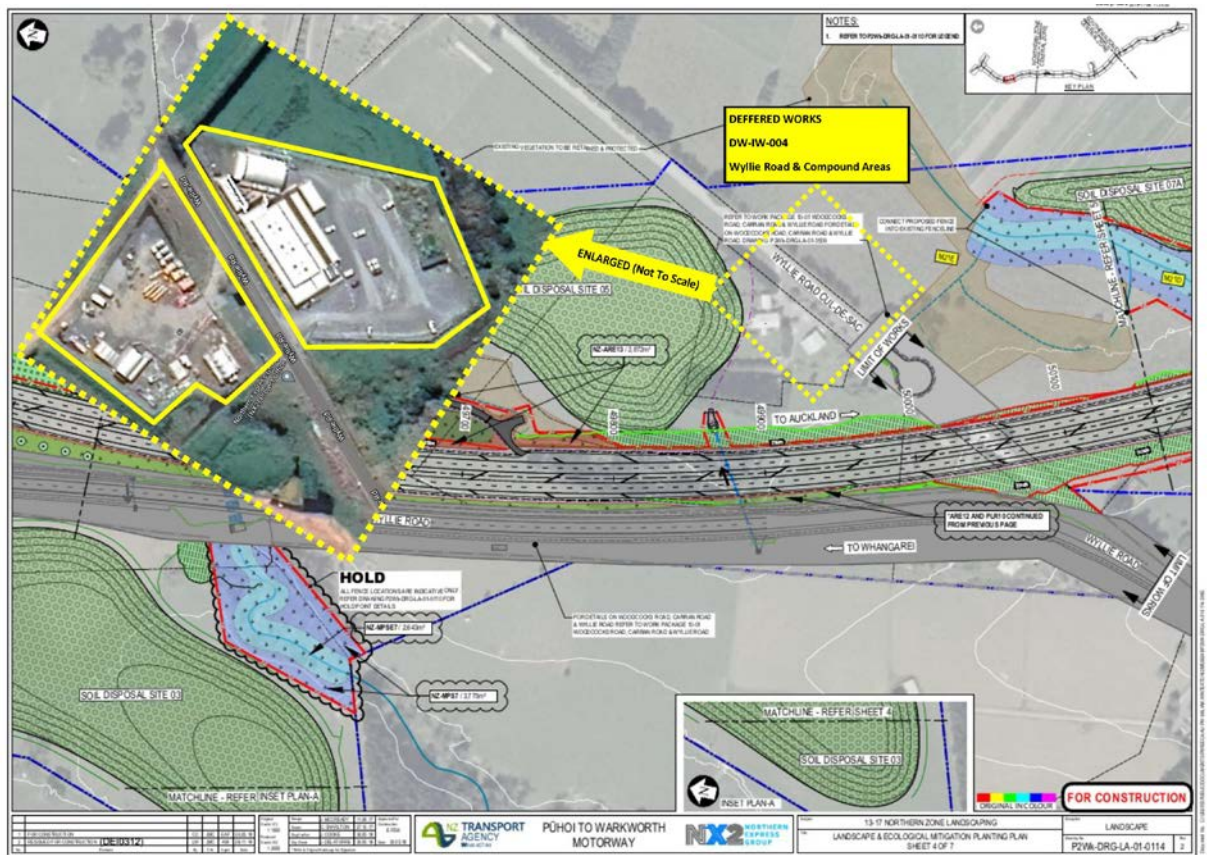
7.1 Southern Connection Tie-in



7.2 Northern Connection Roundabout



7.3 Wyllie Road Office & Compound



Appendix A: Road Opening Completion – Road Opening Completion Tests

WCT	Description of Works Completion Test	Acceptance Criteria	Independent Reviewer requirements to ascertain whether Acceptance Criteria met	Independent Reviewer Action (as described in General section above)			
				1	2	3	4
1	The Initial Works (other than the Deferred Works) have been constructed in accordance with the relevant Final Design Documentation.	The Contractor has constructed the Initial Works (other than the Deferred Works) in compliance with the relevant Final Design Documentation, other than any planting (e.g. successional planting) programmed to be implemented after Road Opening Works Completion by the then applicable Construction Programme, such planting being deemed to be excepted from WCT 1 in the relevant Final Design Documentation.	<p>The Independent Reviewer has received the Final Design Documentation and has confirmed to its reasonable satisfaction that it is complete and has been Finalised in accordance with Schedule 8 (Review Procedures).</p> <p>The Independent Reviewer has received and reviewed all quality documentation (including Inspection and Test Plans, test results and any warranties, etc.) and has confirmed to its reasonable satisfaction that:</p> <ul style="list-style-type: none"> it is complete and accurate, as assessed by visual inspection of a representative sample of the works; and the Contractor has provided to the Independent Reviewer acceptable certification by a suitable party that the Initial Works (other than the Deferred Works) are fully in accordance with the relevant Final Design Documentation, other than any planting (e.g. successional planting) programmed to be implemented after Road Opening Works Completion by the then applicable Construction Programme, such planting being deemed to be excepted from WCT 1 in the relevant Final Design Documentation. 	x			
				x			x

WCT	Description of Works Completion Test	Acceptance Criteria	Independent Reviewer requirements to ascertain whether Acceptance Criteria met	Independent Reviewer Action (as described in General section above)			
				1	2	3	4
2	The elements of structures and buildings (if any) delivered as part of the Initial Works that are required to comply with the New Zealand Building Code are compliant.	The Contractor has constructed the relevant elements of structures and buildings (if any) forming part of the Initial Works in compliance with the NZBC, and procured appropriate completed "Code Compliance Certificates" (or, where these cannot be obtained in a timely manner, completed "Certificates of Public Use" as a minimum).	The Contractor has provided to the Independent Reviewer a copy of required current "Code Compliance Certificates" (or, where these cannot be obtained in a timely manner, completed "Certificates of Public Use" as a minimum) relating to the Initial Works and the Independent Reviewer has reviewed the documentation and is satisfied that it is accurate and complete and that it has been signed by an authorised Local Authority representative.	x			
			The Contractor has provided to the Independent Reviewer a copy of all required approved building consents relating to the Initial Works including any amendments, earthworks consents and engineering approvals (including utilities connections or protection works) required outside of building consents and the Independent Reviewer has reviewed the documentation and is satisfied that it is accurate and complete and that it has been signed by an authorised Local Authority representative.	x			
3	The elements of the Initial Works that are required to comply with Local Authorities' requirements regarding works on local roads are compliant.	The Contractor has constructed the relevant elements of the Initial Works in compliance with all Local Authorities' requirements regarding works on local roads.	The Contractor has provided to the Independent Reviewer a copy of all required written Local Authority sign-offs in relation to roads comprised within the Initial Works that are to be handed over to the relevant Local Authority and the Independent Reviewer has received evidence of suitable confirmation at the appropriate level of delegation within that relevant Local Authority that such local roads and connections have been designed and constructed to comply with the requirements of the relevant Local Authority and hand back to the relevant Local Authority will be accepted after the legalisation of the Local Roads.	x			

WCT	Description of Works Completion Test	Acceptance Criteria	Independent Reviewer requirements to ascertain whether Acceptance Criteria met	Independent Reviewer Action (as described in General section above)			
				1	2	3	4
4	The Initial Works (other than the Deferred Works) comply with all relevant RMA Conditions.	The Initial Works (other than the Deferred Works) comply with all relevant RMA Conditions.	The Contractor has provided to the Independent Reviewer evidence from Auckland Council that confirms the Initial Works (other than the Deferred Works) are in full compliance with all relevant RMA Conditions.	x			
5	CS-VUE (or equivalent consent compliance database approved by the Transport Agency) has been updated in respect of the Initial Works (other than the Deferred Works).	The Contractor has updated CS-VUE (or equivalent consent compliance database approved by the Transport Agency) in respect of the Initial Works (other than the Deferred Works).	The Contractor has confirmed to the Independent Reviewer's reasonable satisfaction that CS-VUE (or equivalent consent compliance database approved by the Transport Agency) has been updated in respect of the Initial Works (other than the Deferred Works), and that update is complete and accurate.	x			
6	All Producer Statements with respect to the Initial Works have been obtained.	The Contractor has obtained all required Producer Statements with respect to the Initial Works.	<p>The Contractor has provided to the Independent Reviewer all required Producer Statements in an appropriate format and the Independent Reviewer is satisfied that they are complete and have been signed by a suitably qualified person with an appropriate level of independence.</p> <p>Note: Producer Statements will be provided as part of the QA records to provide certification that the Initial Works are constructed in accordance with the relevant Final Design Documentation, including confirmation that confirms that the Bridge Manual has been appropriately applied to all Structures, Bridges and Culverts.</p>	x			
7	<p>The Road Safety Audits:</p> <ul style="list-style-type: none"> at the design development stage (pre-construction); and 	The Contractor has conducted the required Road Safety Audits in respect of the Initial Works and has provided to the Transport Agency the Road Safety Audit report and has	<p>The Independent Reviewer has received, and has received evidence of transmittal to the Transport Agency of:</p> <ul style="list-style-type: none"> the Initial Works Road Safety Audit Report (the "IW Report"); 	x	x		

WCT	Description of Works Completion Test	Acceptance Criteria	Independent Reviewer requirements to ascertain whether Acceptance Criteria met	Independent Reviewer Action (as described in General section above)			
				1	2	3	4
	<ul style="list-style-type: none"> post-construction, have been completed and relevant concerns have been resolved in respect of the Initial Works (acknowledging that the operation of an approved temporary traffic management plan at the Temporary Connection relating to the performance of the MLR Infrastructure Works is permitted and will be deemed not to give rise to any safety concerns). 	resolved all moderate and higher safety concerns raised during such Road Safety Audits. The operation of an approved temporary traffic management plan at the Temporary Connection relating to the performance of the MLR Infrastructure Works is permitted and will be deemed not to give rise to any safety concerns.	<ul style="list-style-type: none"> a complete set of the information provided to the Road Safety Audit Team; and the Contractor's comments and responses to the IW Report, <p>and the Contractor has provided evidence to the Independent Reviewer that it has completed all actions required to resolve all moderate and higher safety concerns raised during the Road Safety Audits. The operation of an approved temporary traffic management plan at the Temporary Connection relating to performance of the MLR Infrastructure Works is permitted and will be deemed not to give rise to any safety concerns.</p>				
8	The Initial Works (other than any area in the Initial Works expressly identified and agreed in writing by the parties as being exempt from this WCT 8 including any areas agreed for the purposes of enabling the Deferred Works) are free from construction material and is substantially free from	The Initial Works (other than any area in the Initial Works expressly identified and agreed in writing by the parties as being exempt from this WCT 8 including any areas agreed for the purposes of enabling the Deferred Works) are free from construction material, and is substantially free from litter, refuse, debris and animal remains	<p>The Independent Reviewer has confirmed to its reasonable satisfaction that the Initial Works (other than any area in the Initial Works expressly identified and agreed in writing by the parties as being exempt from this WCT 8 including any areas agreed for the purposes of enabling the Deferred Works) are free from construction related material and is substantially free from litter, refuse, debris and animal remains.</p> <p>The Independent Reviewer has confirmed to its reasonable satisfaction that the Initial Works (other than the Temporary Connection and the Deferred Works) is fenced in accordance with the Project Agreement requirements.</p> <p>The Independent Reviewer has confirmed to its reasonable satisfaction that the areas in which Deferred Works and the Temporary Connection</p>				x
							x

WCT	Description of Works Completion Test	Acceptance Criteria	Independent Reviewer requirements to ascertain whether Acceptance Criteria met	Independent Reviewer Action (as described in General section above)			
				1	2	3	4
	<p>litter, refuse, debris and animal remains.</p> <p>The Initial Works (other than the Temporary Connection and the Deferred Works) is fenced in accordance with the Project Agreement requirements.</p> <p>The Deferred Works and the Temporary Connection areas have adequate temporary fencing which complies with the requirements of the Project Agreement (other than in respect of the design life requirements) so as to enable the P2WK Project to be legally, safely and practically opened and operated as a Motorway, and otherwise operated in accordance with the Project Documents on and from Road Opening Completion.</p>	<p>The Initial Works (other than the Temporary Connection and the Deferred Works) is fenced in accordance with the Project Agreement requirements.</p> <p>The Deferred Works and the Temporary Connection areas have adequate temporary fencing which complies with the requirements of the Project Agreement (other than in respect of the design life requirements) so as to enable the P2WK Project to be legally, safely and practically opened and operated as a Motorway, and otherwise operated in accordance with the Project Documents on and from Road Opening Completion.</p>	<p>are to occur have adequate temporary fencing which complies with the requirements of the Project Agreement (other than in respect of the design life requirements) so as to enable the P2WK Project to be legally, safely and practically opened and operated as a Motorway, and otherwise operated in accordance with the Project Documents on and from Road Opening Completion.</p>				

WCT	Description of Works Completion Test	Acceptance Criteria	Independent Reviewer requirements to ascertain whether Acceptance Criteria met	Independent Reviewer Action (as described in General section above)			
				1	2	3	4
9	All warranties, guarantees and data sheets required for successful operation and maintenance of all assets within the Initial Works have been obtained.	The Contractor has obtained all required warranties and guarantees and provided sufficient detailed information as is necessary for the successful operation and maintenance of all assets within the Initial Works to be listed on the Asset Register.	The Independent Reviewer has received evidence of transmittal to the Transport Agency of all required warranties, detailed information and data sheets, and associated asset management plans in relation to the Initial Works, and confirmed to its reasonable satisfaction that they are complete and accurate.	x	x		
10	The construction defects report (in accordance with the methodology set out in the Works Completion Plan) has been appropriately completed in respect of the Initial Works and identified defects (excluding only Snagging Defects) have been rectified.	The Contractor has provided to the Transport Agency a completed construction defects report in respect of the Initial Works that, as a minimum, details all construction defects (categorised as design, materials, specification or workmanship defects), including a description of the defect, the method of identification, GPS location, the cause, a description and results of the tests carried out, details of any remedial measures taken, including the results of additional testing undertaken, and including all associated dates.	The Independent Reviewer has received evidence of transmittal to the Transport Agency of the final construction defects report in respect of the Initial Works and the Independent Reviewer has confirmed to its reasonable satisfaction that such final construction defects report is complete and accurate, and all identified non-Snagging Defects have satisfactorily been addressed in accordance with the Project Agreement requirements.	x	x		x

WCT	Description of Works Completion Test	Acceptance Criteria	Independent Reviewer requirements to ascertain whether Acceptance Criteria met	Independent Reviewer Action (as described in General section above)			
				1	2	3	4
11	All required Services Documentation has been Finalised in accordance with the Project Agreement requirements.	All required Services Documentation has been Finalised in accordance with the requirements of the Project Agreement, including Part 2 (Services Documentation) of Schedule 9 (Operative Documents).	The Independent Reviewer has received evidence and confirmed to its reasonable satisfaction that all Services Documentation required to be Finalised before the Service Commencement Date has been Finalised.		x		
12	All RAMM update tables relating to the Initial Works have been completed in accordance with the Project Agreement requirements and provided to the Transport Agency.	The Contractor has provided to the Transport Agency all completed RAMM update tables in respect of the Initial Works in accordance with the State Highways Database Operation Manual and the Location Reference Management System Manual.	<p>The Independent Reviewer has received all completed RAMM update tables in respect of the Initial Works (in accordance with the State Highways Database Operation Manual and the Location Reference Management System Manual) and has confirmed to its reasonable satisfaction, including via visual inspection, that the tables are complete, accurate and in the correct format.</p> <p>The Independent Reviewer has received evidence of transmittal to the Transport Agency of all completed RAMM update tables in respect of the Initial Works, having satisfied this WCT 12.</p>	x			x
13	All information necessary to update the Bridge Data System in relation to all Bridges within the Initial Works in accordance with the Project Agreement requirements has been provided to the Transport Agency.	The Contractor has provided to the Transport Agency all required information necessary to update the Bridge Data System in relation to all Bridges within the Initial Works, in accordance with the Bridge Data System Structural Guide.	The Independent Reviewer has received evidence of transmittal to the Transport Agency of all required information with respect to the Initial Works for the Bridge Data System, and has confirmed to its reasonable satisfaction that the information is accurate, complete and in the correct format.		x		

WCT	Description of Works Completion Test	Acceptance Criteria	Independent Reviewer requirements to ascertain whether Acceptance Criteria met	Independent Reviewer Action (as described in General section above)			
				1	2	3	4
14	Operational readiness						
14.1	The Contractor is operationally ready.	The Contractor has demonstrated it is operationally ready and that it has the appropriate personnel, processes and equipment in place to deliver the AMM Services.	The Independent Reviewer has received the Contractor's Finalised plan for commissioning and operational readiness (being part of the relevant Works Completion Plan), and the results of any actions taken to rectify any deficiencies arising from the Inspection and Test Plan or the relevant Works Completion Plan, and the Contractor has provided evidence to the Independent Reviewer's reasonable satisfaction that the Contractor has implemented such plan accordingly.	x			
14.2	The Contractor's Inspection and Test Plan equipment relating to the Initial Works has been comprehensively tested in the manufacturer's production facility in accordance with documented and certified testing procedures.	The Contractor has demonstrated that all such factory acceptance tests have been carried out and that the test reports demonstrate that the equipment is fit for the designed purpose.	The Independent Reviewer has received production test reports for each item of equipment relating to the Initial Works, and has confirmed to its reasonable satisfaction that factory acceptance testing has been successfully completed in accordance with the manufacturer test procedures.	x			
14.3	The Contractor's ITS equipment, subsystem and complete system (including the requirements for ATOC), that is to be delivered as part of the Initial Works (Initial Works ITS Assets) has been	The Contractor has demonstrated that Initial Works ITS Assets meet the requirements of the Transport Agency's network operations protocols and subsystem configuration.	The Independent Reviewer has received site acceptance test certificates and has confirmed to its reasonable satisfaction, including witnessing final testing, that the Initial Works ITS Assets will operate as intended in the operational environment.	x		x	

WCT	Description of Works Completion Test	Acceptance Criteria	Independent Reviewer requirements to ascertain whether Acceptance Criteria met	Independent Reviewer Action (as described in General section above)			
				1	2	3	4
	comprehensively tested in an on-site environment prior to any network configuration.	The Contractor's Initial Works ITS Assets have been tested to ensure the integrity of the Transport Agency's and ATOC's network communications and systems are not compromised by the introduction of the Contractor's additional and new technologies.					
14.4	The Initial Works ITS Assets, has been comprehensively tested to ensure the integrity of the Transport Agency's and ATOC's ICT System.	<p>The Contractor has commissioned the Initial Works ITS Assets, including ATOC personnel acceptance testing, and has been signed off by ATOC.</p> <p>The Contractor has supplied all documentation necessary for the operation of the Contractor's ITS equipment, subsystem and complete system, including systems operations manual, fibre optic information, power supply details, system configuration details, training</p>	<p>The Independent Reviewer has received evidence of ATOC personnel certification that the Initial Works ITS Assets are ready for operation.</p> <p>The Independent Reviewer has confirmed to its reasonable satisfaction that the Contractor has supplied all documentation necessary for the full operation of the Contractor's ITS equipment, subsystem, complete system (including the requirements for ATOC), and that ATOC has accepted the systems into operation.</p>	x			
					x		

WCT	Description of Works Completion Test	Acceptance Criteria	Independent Reviewer requirements to ascertain whether Acceptance Criteria met	Independent Reviewer Action (as described in General section above)			
				1	2	3	4
		manuals, firmware and software details.					
14.5	Traffic monitoring has been installed, commissioned and tested within the Initial Works and meets the Project Agreement requirements.	The Contractor has in place a measurement system within the Initial Works, and has performed full-scale real time commissioning tests to adequately test all aspects of that system.	The Independent Reviewer has confirmed to its reasonable satisfaction, including witnessing final testing, that the measurement system within the Initial Works has been fully tested in accordance with the Finalised Inspection and Test Plans and Finalised commissioning plan (being part of the Works Completion Plan), and meets the Project Agreement requirements.	x		x	
14.7	ATOC protocols have been established in accordance with the Project Agreement requirements.	The Contractor has established operational and communication protocols with ATOC as required under Schedule 12 (Service Requirements).	The Independent Reviewer has access to the protocols and has been provided evidence by the Contractor to the Independent Reviewer's reasonable satisfaction that the protocols are in compliance with the Project Agreement requirements.	x			
14.8	The provision of emergency services facilities is in accordance with the	The Contractor has consulted with the Emergency Services, and designed and constructed the emergency services facilities in accordance with the Project	The Independent Reviewer has attended and witnessed final operational testing by the Contractor, and confirmed to its reasonable satisfaction that the Contractor has operationally tested that the emergency services facilities fully meet the Project Agreement requirements.	x		x	

WCT	Description of Works Completion Test	Acceptance Criteria	Independent Reviewer requirements to ascertain whether Acceptance Criteria met	Independent Reviewer Action (as described in General section above)			
				1	2	3	4
	Project Agreement requirements.	Agreement requirements, and tested the operation of it with a full-scale representative test vehicle.	<p>The Independent Reviewer has received from the Contractor evidence that:</p> <ul style="list-style-type: none"> the Contractor has consulted with the Emergency Services; the Emergency Services have reviewed the design and have confirmed acceptance or returned no comments; and the Emergency Services have confirmed acceptance of, or returned no comments on, the emergency services facilities as built. 	x			
14.9	All required pedestrian, cyclist and recreational user facilities relating to the Initial Works have been constructed in accordance with the Project Agreement requirements.	The Contractor has constructed all pedestrian, cyclist and recreational user facilities in relation to the Initial Works, as appropriate to each facility, in accordance with the Project Agreement requirements.	The Independent Reviewer has received QA records and operational testing results from the Contractor and confirmed to the Independent Reviewer's reasonable satisfaction that all pedestrian and cyclist facilities and safety and warning installations in relation to the Initial Works are in accordance with the Final Design Documentation for the Initial Works and the Project Agreement requirements.	x			
15	Compliance with overriding outcomes						
15.1	The Safety Report required by section 79(1) of the Government Roading Powers Act 1989 has been obtained in respect of the Initial Works.	The Contractor has received, from a Chartered Professional Engineer appointed by it, a report that complies with section 79(1) of the Government Roading Powers Act 1989.	<p>The Independent Reviewer has sighted the report and has confirmed to its reasonable satisfaction that the report provides in relation to the Initial Works that:</p> <ul style="list-style-type: none"> the engineer has inspected the P2Wk Main Alignment; and the engineer has confirmed that the P2Wk Main Alignment is in good and efficient repair and may safely and conveniently be 	x			

WCT	Description of Works Completion Test	Acceptance Criteria	Independent Reviewer requirements to ascertain whether Acceptance Criteria met	Independent Reviewer Action (as described in General section above)			
				1	2	3	4
			used for public traffic (noting that the Temporary Connection, whilst subject to temporary traffic management, may be safely used for public traffic).				
15.2	Not Used - WCT in relation to KiwiRap to be conducted once as part of MLR Infrastructure WCTs.	Not Used	Not Used				
15.3	The Initial Works (other than the Deferred Works) comply with the relevant certified Landscape and Urban Design Framework (ULDF) and the Urban and Landscape Design Sector Plans (ULDSPs) required by the relevant RMA Conditions.	The Contractor has constructed the Initial Works (other than the Deferred Works) in accordance with the relevant Certified ULDF and ULDSPs.	The Independent Reviewer has received the certified ULDF and ULDSPs relevant to the Initial Works, and the Contractor has provided evidence to the Independent Reviewer's reasonable satisfaction that the Initial Works (other than the Deferred Works) have been constructed in accordance with the relevant Final Design Documentation, and complies with the relevant Certified ULDF and ULDSPs.	x			x
16	Compliance with design working life requirements						
16.1	The Initial Works have been constructed to meet the design working life requirements set out in the Project Agreement.	The Contractor has constructed the Initial Works in a manner to achieve the required design working life of elements in accordance with the Project Agreement.	The Independent Reviewer has received warranties, guarantees and QA records from the Contractor, and the Contractor has confirmed to the Independent Reviewer's reasonable satisfaction that the Initial Works been constructed in a manner that has allowed the required design working life to be achieved. Through representative visual inspections of the Initial Works, the Independent Reviewer has confirmed that there is no material damage	x			x

WCT	Description of Works Completion Test	Acceptance Criteria	Independent Reviewer requirements to ascertain whether Acceptance Criteria met	Independent Reviewer Action (as described in General section above)			
				1	2	3	4
			to the Initial Works that adversely impacts the design working life expectancies.				
17	Compliance with lighting and electrical requirements						
17.1	The Initial Works include all lighting required to meet the Project Agreement requirements and Designation Condition D75.	The Contractor has constructed the Initial Works so that all lighting required to meet the Project Agreement requirements is installed in accordance with manufacturer's specifications.	The Independent Reviewer has received from the Contractor all quality documentation (including compliance and field testing documentation), and the Contractor has confirmed to the Independent Reviewer's reasonable satisfaction that all lighting within the Initial Works is in accordance with the Project Agreement requirements and the manufacturer's specifications, including with respect to levels of illumination.	x			
			The Independent Reviewer has undertaken a visual night inspection and confirmed to its reasonable satisfaction that all lights within the Initial Works are operational and have achieved the desired level of illumination, in accordance with the Project Agreement requirements.				x
17.2	All electrical works within the Initial Works comply with all current legislation.	The Contractor has undertaken all electrical work within the Initial Works in compliance with all current legislation.	The Independent Reviewer has received evidence from the Contractor that confirms to the Independent Reviewer's reasonable satisfaction that the electrical works within the Initial Works have been certified by a suitably qualified person in accordance with the applicable statutes, Regulations and Codes of Practice, and in particular the Electricity Act and Health and Safety in Employment Act 1992 and all Regulations, Codes of Practice recognised under those statutes, including but not limited to the NZ Electricity Code of Practice, AS/NZS3000, Electrical (Safety) Regulations, and Registered Utility Operators Codes and the Code.	x			

WCT	Description of Works Completion Test	Acceptance Criteria	Independent Reviewer requirements to ascertain whether Acceptance Criteria met	Independent Reviewer Action (as described in General section above)			
				1	2	3	4
18	Compliance with overweight and over-dimension vehicle requirements						
18.1	The P2Wk Roads (excluding the MLR Infrastructure) and existing SH1 carriageway affected by the P2Wk Project works are suitable for use by Overweight Loads and Over-dimension Loads and as an Over-dimension Route in accordance with the Project Agreement requirements.	The Contractor has constructed the Initial Works so that the applicable P2Wk Roads and existing SH1 carriageway affected by the Initial Works are suitable for use by overweight and overdimension vehicles and as an Over-dimension Route in accordance with the Project Agreement requirements.	The Independent Reviewer has access to the relevant Final Design Documentation and QA documentation detailing the location/extent of the Over-dimension Route, and demonstrating that the required overdimension clearance envelope (excluding road safety barrier systems) has been provided, and the Contractor has confirmed to the Independent Reviewer's reasonable satisfaction, including through visual inspection of a representative sample by the Independent Reviewer, that the Over-dimension Route over the Initial Works has been provided in accordance with the relevant Final Design Documentation and that the required clearance envelope has been achieved.	x			x
19	Compliance with HPMV requirements						
19.1	The P2Wk Roads (excluding the MLR Infrastructure) are suitable for use by HPMVs in accordance with the Project Agreement requirements.	The Contractor has constructed the P2Wk Roads (excluding the MLR Infrastructure) so that they are suitable for use by HPMVs in accordance with the Project Agreement requirements.	The Independent Reviewer has access to the relevant Final Design Documentation including tracking curves for critical turning movements demonstrating that the required vehicle travelling at 20kph can undertake the movement (which may track into a flush median or adjacent lane but may not enter the opposing lane and will meeting all minimum clearances to kerbs and road furniture) within the Initial Works and the Contractor has confirmed to the Independent Reviewer's reasonable satisfaction including through visual inspection of a representative sample by the Independent Reviewer that the required vehicle can safely undertake such movement in accordance with the Project Agreement requirements.	x			x

WCT	Description of Works Completion Test	Acceptance Criteria	Independent Reviewer requirements to ascertain whether Acceptance Criteria met	Independent Reviewer Action (as described in General section above)			
				1	2	3	4
20	Compliance with road safety barrier system requirements						
20.1	All road safety barrier systems within the Initial Works have been constructed in accordance with Project Agreement requirements.	The Contractor has constructed all road safety barrier systems in accordance with the Project Agreement requirements.	<p>The Independent Reviewer has received from the Contractor quality records demonstrating that the road safety barrier systems on the P2Wk Roads (including interchanges, but excluding the MLR Infrastructure) comply with the Project Agreement requirements.</p> <p>The Independent Reviewer has visually inspected a representative sample of road safety barrier systems to confirm to its reasonable satisfaction that the road safety barrier systems within the Initial Works meet the relevant Final Design Documentation.</p>	x			x
21	Compliance with utilities requirements						
21.1	The National Code of Practice for Utility Operators' Access to Transport Corridors has been complied with in respect of the Initial Works.	The Contractor has complied with the National Code of Practice for Utilities Access to the Transport Corridor in respect of the Initial Works, and any non-conformances have been rectified appropriately.	The Independent Reviewer has reviewed evidence submitted from the Contractor to the Transport Agency and confirmed to its reasonable satisfaction that the Contractor has complied with all of its obligations under the National Code of Practice for Utilities Access to the Transport Corridor in respect of the Initial Works (and that any previous non-conformances have been rectified appropriately).	x			
21.3	All utilities infrastructure within the Initial Works meets the Project Agreement requirements.	The Contractor has constructed all utilities infrastructure within the scope of the Initial Works in accordance with the Project Agreement requirements.	The Independent Reviewer has received the relevant Final Design Documentation and associated quality records, and the Contractor has confirmed to the Independent Reviewer's reasonable satisfaction that the utilities within the scope of the Initial Works have been constructed in accordance with the relevant Final Design Documentation and the Project Agreement requirements.	x			

WCT	Description of Works Completion Test	Acceptance Criteria	Independent Reviewer requirements to ascertain whether Acceptance Criteria met	Independent Reviewer Action (as described in General section above)			
				1	2	3	4
21.4	The Transport Agency utility ducts and chambers within the Initial Works have been constructed in accordance with the Project Agreement requirements.	The Contractor has constructed the Initial Works so that they include the Transport Agency ducts and chambers that are required under the Project Agreement requirements.	The Independent Reviewer has received the quality records and has undertaken a representative sample of visual inspections of the ducts and chambers within the Initial Works, and has confirmed to its reasonable satisfaction that the Transport Agency ducts and chambers comply with the Project Agreement requirements, including that ducts are to shape, are continuous, have suitable draw wires, and that covers to chambers are appropriately fastened and secure.	x			x
22	Compliance with signs, delineation and pavement marking requirements						
22.1	All signs, delineation and pavement markings have been provided in accordance with the Project Agreement requirements (with temporary signage and pavement marking provided for the Northern Connection).	The Contractor has erected and included in the Initial Works all signs, delineation and pavement markings in accordance with the Project Agreement requirements, with temporary signage and pavement marking provided for the Northern Connection.	The Independent Reviewer has received and reviewed QA records and has confirmed to its reasonable satisfaction, including a representative sample of visual inspections, that the signs in relation to the Initial Works have been erected and markings have been undertaken in accordance with the manufacturer's specifications and Final Design Documentation (acknowledging that the signage and pavement marking for the Northern Connection will be of a temporary nature).	x			x

WCT	Description of Works Completion Test	Acceptance Criteria	Independent Reviewer requirements to ascertain whether Acceptance Criteria met	Independent Reviewer Action (as described in General section above)			
				1	2	3	4
23	Compliance with pedestrian and cyclist requirements						
23.1	The Initial Works includes pedestrian and cyclist facilities that comply with the Project Agreement requirements.	The Contractor has constructed pedestrian and cyclist facilities within the Initial Works in accordance with the Project Agreement requirements.	The Independent Reviewer has received the Final Design Documentation relevant to the Initial Works and associated quality records, and the Contractor has confirmed to the Independent Reviewer's reasonable satisfaction and the Independent Reviewer has undertaken sufficient visual inspections and QA audits to confirm that the pedestrian and cyclist facilities have been constructed within the Initial Works in accordance with the relevant Final Design Documentation.	x			x
24	Compliance with location referencing requirements						
24.1	The Initial Works comply with the location referencing requirements set out in the Project Agreement.	The Contractor has provided location referencing for the Initial Works in accordance with the Project Agreement requirements.	The Independent Reviewer has received the relevant Final Design Documentation and associated quality records, and the Contractor has confirmed to the Independent Reviewer's reasonable satisfaction that the location referencing for the Initial Works has been provided in accordance with the Project Agreement requirements.	x			x
25	Compliance with pavements and surfacing requirements						
25.1	The subgrade within the Initial Works provides, and will continue to provide, a minimum CBR value in accordance with the relevant Final Design Documentation.	The Contractor has provided subgrade within the Initial Works that provides, and will continue to provide, a minimum CBR value in accordance with the relevant Final Design Documentation.	Pursuant to the provisions relating to Contractor Hold Point tests set out in the Inspection and Test Plan, the Independent Reviewer has received the Finalised Inspection Test Plan and QA records for Pavements and Surfacing within the Initial Works, and through representative review of the quality records, and witnessed a representative sample of tests and has confirmed to its reasonable satisfaction that the Finalised test plans have been implemented and acceptance criteria achieved and that the subgrade within the Initial Works has been constructed in accordance with the relevant Final Design Documentation.	x		x	

WCT	Description of Works Completion Test	Acceptance Criteria	Independent Reviewer requirements to ascertain whether Acceptance Criteria met	Independent Reviewer Action (as described in General section above)			
				1	2	3	4
25.2	The Initial Works use suitable pavement materials and has suitable pavement construction quality to meet the Project Agreement requirements.	The Contractor has utilised suitable pavement materials and suitable pavement construction quality within the Initial Works to meet the Project Agreement requirements.	Pursuant to the provisions relating to Contractor Hold Point tests set out in the Inspection and Test Plan, the Contractor has provided a copy of the Finalised Inspection and Test Plan and Process Control Plan for Pavements and Surfacing within the Initial Works with evidence to demonstrate that the plans have been implemented. The Independent Reviewer has checked all quality assurance records for all pavement material lots within the Initial Works and confirmed compliance to its reasonable satisfaction, prior to pavement construction.	x			
			Pursuant to the provisions relating to Contractor Hold Point tests set out in the Inspection and Test Plan, the Independent Reviewer has witnessed a representative sample of construction quality tests on pavement lengths and layers within the Initial Works, and confirmed compliance to its reasonable satisfaction.	x		x	
25.3	The pavements within the Initial Works have achieved compaction during construction that is sufficient to ensure achievement of the properties specified for each layer in the relevant Final Design Documentation.	The Contractor has achieved compaction during construction of the Initial Works that is sufficient to ensure achievement of the properties specified for each layer in the relevant Final Design Documentation.	<p>Pursuant to the provisions relating to Contractor Hold Point tests set out in the Inspection and Test Plan, the Independent Reviewer has received the Finalised Inspection and Test Plan and QA records for Pavements and Surfacing within the Initial Works and through:</p> <ul style="list-style-type: none"> • review of a representative sample of the quality assurance records relating to pavement lengths and layers; and • witnessing a representative sample of tests on pavement lengths and layers, <p>has confirmed to its reasonable satisfaction that compaction requirements in respect of the Initial Works have been achieved in accordance with the relevant Final Design Documentation and Project Agreement requirements prior to construction of the next layer.</p>	x		x	

WCT	Description of Works Completion Test	Acceptance Criteria	Independent Reviewer requirements to ascertain whether Acceptance Criteria met	Independent Reviewer Action (as described in General section above)			
				1	2	3	4
25.4	The pavements moisture content within the Initial Works has been managed, in each layer, during Works Provisioning, meets the Project Agreement requirements, and has been checked by the Independent Reviewer prior to surfacing.	The Contractor has monitored, recorded and managed the moisture content of the pavement layers within the Initial Works throughout Works Provisioning in accordance with the Project Agreement requirements.	The Independent Reviewer has received the Finalised Inspection Test Plan and QA records and, through review of a representative sample of the quality records, has confirmed to its reasonable satisfaction that, within the Initial Works, the moisture content for any areas of unbound granular pavement prior to chip sealing is in accordance with the relevant Final Design Documentation and Project Agreement requirements.	x			
25.5	Surface shape of all traffic lanes and all shoulders within the Initial Works meets the Project Agreement requirements.	The Contractor has provided a surface shape of all traffic lanes and all shoulders within the Initial Works that meets the Project Agreement requirements.	<p>The Independent Reviewer has received of the Finalised Inspection Test Plan and QA records and through representative review of the quality records, and witnessed a representative sample of tests and has confirmed to its reasonable satisfaction that the pavement surface and rut depth in respect of the Initial Works have been achieved in accordance with the Project Agreement requirements.</p> <p>The Independent Reviewer will undertake visual inspections of surface shape for representative samples of the road surface prior to Initial Works Completion to confirm to its reasonable satisfaction that the Project Agreement requirements for surface shape and rut depth in respect of the Initial Works have been met. In particular the surface shape must be such that:</p> <ul style="list-style-type: none"> There must be no obvious defects related to poorly constructed longitudinal or transverse joints. No area of the completed surface has any depressions that will allow water to pond. 	x		x	x

WCT	Description of Works Completion Test	Acceptance Criteria	Independent Reviewer requirements to ascertain whether Acceptance Criteria met	Independent Reviewer Action (as described in General section above)			
				1	2	3	4
			<ul style="list-style-type: none"> No visible cracking. 				
25.6	Roughness of the carriageways within the Initial Works complies with the Project Agreement requirements.	The Contractor has provided confirmation that the roughness of the carriageways within the Initial Works with the Project Agreement requirements.	The Independent Reviewer has reviewed the Finalised Inspection and Test Plan and test data and witnessed a sample of NAASRA tests recorded after completion of the wearing course prior to Initial Completion, and confirmed to its reasonable satisfaction that the roughness of the carriageways within the Initial Works is in accordance with the Project Agreement requirements.	x		x	
25.7	There are, within the Initial Works, no potholes in the pavement surfacing or formed shoulders, and no edge break or seal loss encroaching into the surfacing.	The Contractor has provided pavement surfacing throughout the Initial Works that has no potholes in the pavement surfacing or formed shoulders, and no edge break or seal loss encroaching into the surfacing.	The Independent Reviewer has undertaken a representative sample of visual inspections of the road surface prior to Initial Works Completion to confirm to its reasonable satisfaction that this WCT has been met.				x
26	Compliance with Bridges and Major Culverts requirements						
26.1	The Bridges and Major Culverts for the Initial Works have been constructed in accordance with the Project Agreement	The Contractor has constructed the Bridges and Major Culverts for the Initial Works in accordance with the Project Agreement requirements, RMA Conditions and the relevant Final Design Documentation.	The Independent Reviewer has received the relevant Final Design Documentation, including Overweight Vehicle conditions of Operation, associated quality records (including materials storage, handling and maintaining), and the Contractor has confirmed to the Independent Reviewer's reasonable satisfaction that the Initial Works have been constructed in accordance with the relevant Final Design	x			

WCT	Description of Works Completion Test	Acceptance Criteria	Independent Reviewer requirements to ascertain whether Acceptance Criteria met	Independent Reviewer Action (as described in General section above)			
				1	2	3	4
	requirements and RMA Conditions.		Documentation, including design provisions for the construction loadings.				
			The Independent Reviewer has observed a representative sample of construction traffic traversing Bridges within the Initial Works and has received evidence from the Contractor that estimated resultant loadings reconcile with design provisions made for construction traffic.				x
			The Independent Reviewer has undertaken a visual inspection of all completed Bridges within the Initial Works to check for any signs of early fatigue or defective workmanship, and that any corrective actions have been satisfactorily completed.				x
			The Independent Reviewer has, in respect of the Initial Works, access to all surface preparation, proposed protective coatings, application, transportation and testing records in accordance with AS/NZS 2312 and confirmed by representative sampling that to its reasonable satisfaction the records are complete and accurate.	x			
26.2	Piles have been constructed in accordance with the Project Agreement requirements.	The Contractor has constructed all piles in accordance with the relevant Final Design Documentation.	The Independent Reviewer has access to completed construction records for each pile installed, and confirmed by representative sampling to its reasonable satisfaction that the records are complete and accurate.	x			
		The Contractor has a complete and accurate construction	The Independent Reviewer has access to all pile compliance requirements, including test piles, and confirmed by representative	x			

WCT	Description of Works Completion Test	Acceptance Criteria	Independent Reviewer requirements to ascertain whether Acceptance Criteria met	Independent Reviewer Action (as described in General section above)			
				1	2	3	4
		record for every pile installed, including details of materials, practices and testing that comply with the requirements of current AS/NZS standards for pile installation, including test piles.	<p>sampling that to its reasonable satisfaction the records are complete and accurate.</p> <p>The Independent Reviewer has witnessed at least one pile being installed for each Bridge, and can reconcile the pile records provided with that of the pile observed.</p>	x		x	
27	Compliance with Environmental Management Works Requirements						
27.1	The Initial Works have been constructed in accordance with the Outline Plan.	The Contractor has constructed the Initial Works in accordance with the Outline Plan.	The Independent Reviewer has received evidence provided by the Contractor to the Transport Agency that Auckland Council has confirmed that construction has been completed in accordance with the Outline Plan.		x		
28	Compliance with Greenroads™ requirements						
28.1	Not Used - WCT in relation to Greenroads™ to be conducted once as part of MLR Infrastructure WCTs	Not Used	Not Used				

WCT	Description of Works Completion Test	Acceptance Criteria	Independent Reviewer requirements to ascertain whether Acceptance Criteria met	Independent Reviewer Action (as described in General section above)			
				1	2	3	4
29	Compliance with drainage requirements						
29.1	The drainage for the Initial Works has been constructed in accordance with the Project Agreement requirements and the relevant RMA Conditions.	The Contractor has constructed the drainage for the Initial Works in accordance with the Project Agreement requirements, relevant RMA Conditions and the relevant Final Design Documentation.	<p>The Independent Reviewer has received the Final Design Documentation for the Initial Works and associated quality records, and the Contractor has confirmed to the Independent Reviewer's reasonable satisfaction that the drainage for the Initial Works has been constructed in accordance with the relevant Final Design Documentation and the relevant RMA Conditions.</p> <p>The Independent Reviewer has undertaken a visual inspection of a representative sample of the drainage system for the Initial Works and confirmed to its reasonable satisfaction that storm water runoff is collected from the road surface and surrounding topography and transferred to transverse drainage systems without impacting adjacent slopes.</p> <p>The Independent Reviewer has undertaken a visual inspection of a representative sample of the key drainage elements for the Initial Works, in particular those on cut slopes, and confirmed to its reasonable satisfaction that they are free of debris is operating as intended without affecting adjacent slopes and that observed if there are any signs of slope erosion or slips that could impinge on the intended operation of the Drainage System for the Initial Works and where any are observed, that appropriate mitigation measures are in place in each case and that there are no defects, anomalies or early signs of fatigue.</p>	x			x
29.2	The stream diversion(s) for the Initial Works have been executed in accordance with the Project Agreement	The Contractor has constructed a stream diversion solution that will achieve the design working life in accordance with the Project Agreement requirements	The Independent Reviewer has received the Final Design Documentation for the Initial Works, and has confirmed by way of visual inspection of a representative sample to the Independent Reviewer's reasonable satisfaction that the stream diversions for the	x			x

WCT	Description of Works Completion Test	Acceptance Criteria	Independent Reviewer requirements to ascertain whether Acceptance Criteria met	Independent Reviewer Action (as described in General section above)			
				1	2	3	4
	requirements and RMA Condition RC52.	and the relevant RMA Conditions.	Initial Works are in compliance with the relevant Final Design Documentation and the relevant RMA Conditions.				
29.3	All Culverts and drainage structures within the Initial Works comply with the Project Agreement requirements and the relevant RMA Conditions.	The Contractor has constructed all Culverts and drainage structures within the Initial Works in compliance with the Project Agreement requirements.	The Independent Reviewer has access to all material inspection and drainage installation data relating to the Initial Works which confirms that all materials/pre cast structures conform to the relevant NZ standard in relation to bedding, backfill, pipes, joint and leakage, manholes, headwalls, sumps and all other drainage materials/structures.	x			
29.4	All proprietary drainage products within the Initial Works have been installed in accordance with the manufacturer's specifications.	The Contractor has installed all proprietary products within the Initial Works in accordance with the manufacturer's specifications.	The Independent Reviewer has access to data and has confirmed to its reasonable satisfaction by visual inspection that all proprietary products within the Initial Works have been installed in accordance with the manufacturer's specifications.	x			x
29.5	All rock rip-rap and scour protection within the Initial Works are in accordance with the Project Agreement requirements.	The Contractor has, within the Initial Works, provided all rock rip-rap, and other scour protection works, meeting the required quality and durability and performance requirements in accordance with the Project Agreement requirements.	The Independent Reviewer has access to all QA documentation, and the Contractor has confirmed to the Independent Reviewer's reasonable satisfaction (including by the Independent Reviewer undertaking visual inspection) that such protections within the Initial Works are complete and are in accordance with the relevant Final Design Documentation and the Project Agreement requirements.	x			x

WCT	Description of Works Completion Test	Acceptance Criteria	Independent Reviewer requirements to ascertain whether Acceptance Criteria met	Independent Reviewer Action (as described in General section above)			
				1	2	3	4
30	Compliance with Third Party Property Agreements						
30.1	All works required under the Third Party Property Agreements relevant to the Initial Works are complete.	The Contractor has completed all works required under the Third Party Property Agreements relevant to the Initial Works.	The Independent Reviewer has received the Third Party Property Agreement Register and confirmation from the Contractor to the Independent Reviewer's reasonable satisfaction that all works within each of the Third Party Property Agreements relating to the Initial Works have been completed.	x			
		The Contractor has prepared a Third Party Property Agreement Register that provides details of all works required under each Third Party Property Agreement relevant to the Initial Works, together with details and records demonstrating that the works have been completed to the required standard and to the reasonable satisfaction of the relevant third party property owner.	The Independent Reviewer has inspected a representative sample of works under the Third Party Property Agreements and the Contractor has confirmed to the Independent Reviewer's reasonable satisfaction that these works have been completed in accordance with the Third Party Property Agreements or the Works Requirements, as applicable (whether by way of the relevant third party property owner's confirmation/approval or otherwise).				x
31	Compliance with Construction requirements						
31.1	Not Used – health and safety database update to be conducted as part of MLR Infrastructure WCTs.	Not Used	Not Used				

WCT	Description of Works Completion Test	Acceptance Criteria	Independent Reviewer requirements to ascertain whether Acceptance Criteria met	Independent Reviewer Action (as described in General section above)			
				1	2	3	4
32	Continued compliance						
32.1	Where staged Initial Works Completion has been achieved with respect to any element or section prior to the overall Initial Works Completion, such elements and sections continue to meet the requirements of the Initial Works Completion Tests at the date the Initial Works Completion Certificate is issued.	The Independent Reviewer has confirmed to its reasonable satisfaction that all such elements and sections continue to meet the requirements of the Initial Works Completion Tests. This may include through re-test, inspection, review of maintenance documentation and any other method the Independent Reviewer considers appropriate.		x	x	x	x

Appendix B: Full Works Completion – Full Works Completion Tests

WCT	Description of Works Completion Test	Acceptance Criteria	Independent Reviewer requirements to ascertain whether Acceptance Criteria met	Independent Reviewer Action (as described in General section above)			
				1	2	3	4
1	The Deferred Works have been constructed in accordance with the relevant Final Design Documentation.	The Contractor has constructed the Deferred Works in compliance with the relevant Final Design Documentation, other than any planting (e.g. successional planting) programmed to be implemented after Full Works Completion by the then applicable Construction Programme, such planting being deemed to be excepted from WCT 1 in the relevant Final Design Documentation.	<p>The Independent Reviewer has received the Final Design Documentation and has confirmed to its reasonable satisfaction that it is complete and has been Finalised in accordance with Schedule 8 (Review Procedures).</p> <p>The Independent Reviewer has received and reviewed all quality documentation (including Inspection and Test Plans, test results and any warranties, etc.) and has confirmed to its reasonable satisfaction that:</p> <ul style="list-style-type: none"> it is complete and accurate, as assessed by visual inspection of a representative sample of the works; and the Contractor has provided to the Independent Reviewer acceptable certification by a suitable party that the Deferred Works are fully in accordance with the relevant Final Design Documentation, other than any planting (e.g. successional planting) programmed to be implemented after Full Works Completion by the then applicable Construction Programme, such planting being deemed to be excepted from WCT 1 in the relevant Final Design Documentation. 	x			
				x			x
4	The Deferred Works comply with all relevant RMA Conditions.	The Deferred Works comply with all relevant RMA Conditions.	The Contractor has provided to the Independent Reviewer evidence from Auckland Council that confirms the Deferred Works is in full compliance with all relevant RMA Conditions.	x			

WCT	Description of Works Completion Test	Acceptance Criteria	Independent Reviewer requirements to ascertain whether Acceptance Criteria met	Independent Reviewer Action (as described in General section above)			
				1	2	3	4
5	CS-VUE (or equivalent consent compliance database approved by the Transport Agency) has been updated in respect of the Deferred Works.	The Contractor has updated CS-VUE (or equivalent consent compliance database approved by the Transport Agency) in respect of the Deferred Works.	The Contractor has confirmed to the Independent Reviewer's reasonable satisfaction that CS-VUE (or equivalent consent compliance database approved by the Transport Agency) has been updated in respect of the Deferred Works, and that update is complete and accurate.	x			
8	<p>The Deferred Works are free from construction material and is substantially free from litter, refuse, debris and animal remains.</p> <p>The Deferred Works is fenced in accordance with the Project Agreement requirements.</p>	<p>The Deferred Works are free from construction material, and is substantially free from litter, refuse, debris and animal remains</p> <p>The Deferred Works is fenced in accordance with the Project Agreement requirements.</p>	<p>The Independent Reviewer has confirmed to its reasonable satisfaction that the Deferred Works are free from construction related material and is substantially free from litter, refuse, debris and animal remains.</p> <p>The Independent Reviewer has confirmed to its reasonable satisfaction that the Deferred Works is fenced in accordance with the Project Agreement requirements.</p>				<p>x</p> <p>x</p>

WCT	Description of Works Completion Test	Acceptance Criteria	Independent Reviewer requirements to ascertain whether Acceptance Criteria met	Independent Reviewer Action (as described in General section above)			
				1	2	3	4
15	Compliance with overriding outcomes						
15.3	The Deferred Works comply with the relevant certified Landscape and Urban Design Framework (ULDF) and the Urban and Landscape Design Sector Plans (ULDSPs) required by the relevant RMA Conditions.	The Contractor has constructed the Deferred Works in accordance with the relevant Certified ULDF and ULDSPs.	The Independent Reviewer has received the certified ULDF and ULDSPs relevant to the Deferred Works, and the Contractor has provided evidence to the Independent Reviewer's reasonable satisfaction that the Deferred Works have been constructed in accordance with the relevant Final Design Documentation, and complies with the relevant Certified ULDF and ULDSPs.	x			x
33	Deferred Third Party Signoffs						
33.1	All of the Deferred Third Party Signoffs have been obtained by the Contractor.	The Contractor has obtained all of the Deferred Third Party Signoffs in accordance with the Project Agreement requirements.	The Independent Reviewer has received copies of all of the Deferred Third Party Signoffs.	x			

Appendix C: MLR Completion - MLR Completion Tests

WCT	Description of Works Completion Test	Acceptance Criteria	Independent Reviewer requirements to ascertain whether Acceptance Criteria met	Independent Reviewer Action (as described in General section above)			
				1	2	3	4
1	The MLR Infrastructure Works have been constructed in accordance with the relevant Final Design Documentation.	The Contractor has constructed the MLR Infrastructure Works in compliance with the relevant Final Design Documentation, other than any planting (e.g. successional planting) programmed to be implemented after MLR Completion by the then applicable Construction Programme, such planting being deemed to be excepted from WCT 1 in the relevant Final Design Documentation.	<p>The Independent Reviewer has received the relevant Final Design Documentation and has confirmed to its reasonable satisfaction that it is complete and has been Finalised in accordance with Schedule 8 (Review Procedures).</p> <p>The Independent Reviewer has received and reviewed all quality documentation (including Inspection and Test Plans, test results and any warranties, etc.) and has confirmed to its reasonable satisfaction that it is complete and accurate, as assessed by visual inspection of a representative sample of the works, and the Contractor has provided to the Independent Reviewer acceptable certification by a suitable party that the MLR Infrastructure Works are fully in accordance with the relevant Final Design Documentation, other than any planting (e.g. successional planting) programmed to be implemented after MLR Completion by the then applicable Construction Programme, such planting being deemed to be excepted from WCT 1 in the relevant Final Design Documentation.</p>	x			
				x			x

WCT	Description of Works Completion Test	Acceptance Criteria	Independent Reviewer requirements to ascertain whether Acceptance Criteria met	Independent Reviewer Action (as described in General section above)			
				1	2	3	4
2	The elements of structures and buildings (if any) delivered as part of the MLR Infrastructure Works that are required to comply with the New Zealand Building Code are compliant.	The Contractor has constructed the relevant elements of structures and buildings (if any) forming part of the MLR Infrastructure Works in compliance with the NZBC, and procured appropriate completed "Code Compliance Certificates" (or, where these cannot be obtained in a timely manner, completed "Certificates of Public Use" as a minimum).	The Contractor has provided to the Independent Reviewer a copy of required current "Code Compliance Certificates" (or, where these cannot be obtained in a timely manner, completed "Certificates of Public Use" as a minimum) relating to the MLR Infrastructure Works and the Independent Reviewer has reviewed the documentation and is satisfied that it is accurate and complete and that it has been signed by an authorised Local Authority representative.	x			
			The Contractor has provided to the Independent Reviewer a copy of all required approved building consents in respect of the MLR Infrastructure Works including any amendments, earthworks consents and engineering approvals (including utilities connections or protection works) required outside of building consents and the Independent Reviewer has reviewed the documentation and is satisfied that it is accurate and complete and that it has been signed by an authorised Local Authority representative.	x			
3	The elements of the MLR Infrastructure Works that are required to comply with Local Authorities' requirements regarding works on	The Contractor has constructed the relevant elements of the MLR Infrastructure Works in compliance with all Local Authorities' requirements regarding works on local roads.	The Contractor has provided to the Independent Reviewer a copy of all required written Local Authority sign-offs in relation to roads comprised within the MLR Infrastructure Works that are to be handed over to the relevant Local Authority and the Independent Reviewer has received evidence of suitable confirmation at the appropriate level of delegation within that relevant Local Authority that such local roads and connections have been designed and constructed to comply with the requirements of the relevant Local Authority and hand back to the	x			

WCT	Description of Works Completion Test	Acceptance Criteria	Independent Reviewer requirements to ascertain whether Acceptance Criteria met	Independent Reviewer Action (as described in General section above)			
				1	2	3	4
	local roads are compliant.		relevant Local Authority will be accepted after the legalisation of the Local Roads.				
4	The MLR Infrastructure Works comply with all relevant RMA Conditions.	The MLR Infrastructure Works comply with all relevant RMA Conditions.	The Contractor has provided to the Independent Reviewer evidence from Auckland Council that confirms the MLR Infrastructure Works are in full compliance with the relevant RMA Conditions.	x			
5	CS-VUE (or equivalent consent compliance database approved by the Transport Agency) has been updated in respect of the MLR Infrastructure Works.	The Contractor has updated CS-VUE (or equivalent consent compliance database approved by the Transport Agency) in respect of the MLR Infrastructure Works.	The Contractor has confirmed to the Independent Reviewer's reasonable satisfaction that CS-VUE (or equivalent consent compliance database approved by the Transport Agency) has been updated in respect of the MLR Infrastructure Works, and that update is complete and accurate.	x			
6	All Producer Statements with respect to the MLR Infrastructure Works have been obtained.	The Contractor has obtained all required Producer Statements with respect to the MLR Infrastructure Works.	<p>The Contractor has provided to the Independent Reviewer all required Producer Statements in respect of the MLR Infrastructure Works in an appropriate format and the Independent Reviewer is satisfied that they are complete and have been signed by a suitably qualified person with an appropriate level of independence.</p> <p>Note: Producer Statements will be provided as part of the QA records to provide certification that the MLR Infrastructure Works is constructed in accordance with the relevant Final Design Documentation, including confirmation that confirms that the Bridge Manual has been appropriately applied to all Structures, Bridges and Culverts.</p>	x			

WCT	Description of Works Completion Test	Acceptance Criteria	Independent Reviewer requirements to ascertain whether Acceptance Criteria met	Independent Reviewer Action (as described in General section above)			
				1	2	3	4
7	<p>The Road Safety Audits:</p> <ul style="list-style-type: none"> at the design development stage (pre-construction); and post-construction, <p>have been completed and relevant concerns have been resolved in respect of the MLR Infrastructure Works.</p>	<p>The Contractor has conducted the required Road Safety Audits and has provided to the Transport Agency the Road Safety Audit report and has resolved all moderate and higher safety concerns raised during Road Safety Audits.</p>	<p>The Independent Reviewer has received, and has received evidence of transmittal to the Transport Agency of:</p> <ul style="list-style-type: none"> the MLR Infrastructure Works' Road Safety Audit Report (the "MLR Report"); a complete set of the information provided to the Road Safety Audit Team; and the Contractor's comments and responses to the MLR Report, <p>and the Contractor has provided evidence to the Independent Reviewer that it has completed all actions required to resolve all moderate and higher safety concerns raised during the Road Safety Audits.</p>	x	x		
8	<p>The MLR Infrastructure Works and any area in the Initial Works expressly identified and agreed in writing by the parties as being exempt from WCT 8 in Appendix A are free from construction material and is substantially free from litter, refuse, debris and animal remains.</p>	<p>The MLR Infrastructure Works and any area in the Initial Works expressly identified and agreed in writing by the parties as being exempt from WCT 8 in Appendix A) are free from construction material, and is substantially free from litter, refuse, debris and animal remains.</p> <p>MLR Infrastructure Works and the Temporary Connection (as redesigned or enhanced as part of the MLR Infrastructure Works)</p>	<p>The Independent Reviewer has confirmed to its reasonable satisfaction that the MLR Infrastructure Works and any area in the Initial Works expressly identified and agreed in writing by the parties as being exempt from WCT 8 in Appendix A are free from construction related material and is substantially free from litter, refuse, debris and animal remains.</p> <p>The Independent Reviewer has confirmed to its reasonable satisfaction that the MLR Infrastructure and the Temporary Connection (as redesigned or enhanced as part of the MLR Infrastructure Works) is fenced in accordance with the Project Agreement requirements.</p>				<p>x</p> <p>x</p>

WCT	Description of Works Completion Test	Acceptance Criteria	Independent Reviewer requirements to ascertain whether Acceptance Criteria met	Independent Reviewer Action (as described in General section above)			
				1	2	3	4
	The MLR Infrastructure Works and the Temporary Connection (as redesigned or enhanced as part of the MLR Infrastructure Works) is fenced in accordance with the Project Agreement requirements.	is fenced in accordance with the Project Agreement requirements.					
9	All warranties, guarantees and data sheets required for successful operation and maintenance of all MLR Infrastructure Works assets have been obtained.	The Contractor has obtained all required warranties and guarantees and provided sufficient detailed information as is necessary for the successful operation and maintenance of all assets within the MLR Infrastructure Works listed on the Asset Register.	The Independent Reviewer has received evidence of transmittal to the Transport Agency of all required warranties, detailed information and data sheets, and associated asset management plans in relation to the MLR Infrastructure Works, and confirmed to its reasonable satisfaction that they are complete and accurate.	x	x		
10	The construction defects report in respect of the MLR Infrastructure Works (in accordance with the methodology set out in the relevant Works Completion Plan) has been	The Contractor has provided to the Transport Agency a completed construction defects report in respect of the MLR Infrastructure Works that, as a minimum, details all construction defects (categorised as design, materials, specification or workmanship defects), including	The Independent Reviewer has received evidence of transmittal to the Transport Agency of the final construction defects report in respect of the MLR Infrastructure Works and the Independent Reviewer has confirmed to its reasonable satisfaction that such final construction defects report is complete and accurate, and all identified non-Snagging Defects have satisfactorily been addressed in accordance with the Project Agreement requirements.	x	x		x

WCT	Description of Works Completion Test	Acceptance Criteria	Independent Reviewer requirements to ascertain whether Acceptance Criteria met	Independent Reviewer Action (as described in General section above)			
				1	2	3	4
	appropriately completed and identified defects (excluding only Snagging Defects) have been rectified.	a description of the defect, the method of identification, GPS location, the cause, a description and results of the tests carried out, details of any remedial measures taken, including the results of additional testing undertaken, and including all associated dates.					
11	Not Used – Service Documentation finalised as part of Initial Works WCTs so not repeated	Not Used	Not Used				
12	All RAMM update tables relating to the MLR Infrastructure Works have been completed in accordance with the Project Agreement requirements and provided to the Transport Agency.	The Contractor has provided to the Transport Agency all completed RAMM update tables in respect of the MLR Infrastructure Works in accordance with the State Highways Database Operation Manual and the Location Reference Management System Manual.	The Independent Reviewer has received all completed RAMM update tables in respect of the MLR Infrastructure Works (in accordance with the State Highways Database Operation Manual and the Location Reference Management System Manual) and has confirmed to its reasonable satisfaction, including via visual inspection, that the tables are complete, accurate and in the correct format.	x			x
			The Independent Reviewer has received evidence of transmittal to the Transport Agency of all completed RAMM update tables in respect of the MLR Infrastructure Works, having satisfied this WCT 12.		x		

WCT	Description of Works Completion Test	Acceptance Criteria	Independent Reviewer requirements to ascertain whether Acceptance Criteria met	Independent Reviewer Action (as described in General section above)			
				1	2	3	4
13	All information necessary to update the Bridge Data System in relation to Bridges (if any) within the MLR Infrastructure Works in accordance with the Project Agreement requirements has been provided to the Transport Agency.	The Contractor has provided to the Transport Agency all required information necessary to update the Bridge Data System in relation to Bridges (if any) within the MLR Infrastructure Works, in accordance with the Bridge Data System Structural Guide.	The Independent Reviewer has received evidence of transmittal to the Transport Agency of all required information with respect to the MLR Infrastructure Works for the Bridge Data System, and has confirmed to its reasonable satisfaction that the information is accurate, complete and in the correct format.		x		
14	Operational readiness						
14.1	The Contractor is operationally ready in relation to the MLR Infrastructure Works.	The Contractor has demonstrated it is operationally ready in relation to MLR Infrastructure Works by completing the items or activities relating to commissioning and operational readiness identified in the relevant Works Completion Plan as being undertaken as part of, or on completion of, the MLR Infrastructure (MLR Infrastructure Readiness Activities).	The Contractor has provided evidence to the Independent Reviewer's reasonable satisfaction that the Contractor has completed the MLR Readiness Activities.	x			

WCT	Description of Works Completion Test	Acceptance Criteria	Independent Reviewer requirements to ascertain whether Acceptance Criteria met	Independent Reviewer Action (as described in General section above)			
				1	2	3	4
14.2	The Contractor's Inspection and Test Plan equipment relating to the MLR Infrastructure Works has been comprehensively tested in the manufacturer's production facility in accordance with documented and certified testing procedures.	The Contractor has demonstrated that all such factory acceptance tests have been carried out and that the test reports demonstrate that the equipment is fit for the designed purpose.	The Independent Reviewer has received production test reports for each item of equipment relating to the MLR Infrastructure Works, and has confirmed to its reasonable satisfaction that factory acceptance testing has been successfully completed in accordance with the manufacturer test procedures.	x			
14.3	The Contractor's ITS equipment and subsystem required to be delivered as part of the MLR Infrastructure Works (MLRi ITS Assets) has been comprehensively tested in an on-site environment prior to any network configuration.	<p>The Contractor has demonstrated that the Contractor's MLRi ITS Assets meet the requirements of the Transport Agency's network operations protocols and subsystem configuration</p> <p>The Contractor's MLRi ITS Assets have been tested to ensure they integrate with the Initial Works ITS Assets (as defined in WCT 14.3 in Appendix A above) and the integrity of the Initial ITS Assets are not compromised by the</p>	The Independent Reviewer has received site acceptance test certificates and has confirmed to its reasonable satisfaction, including witnessing final testing, that the Contractor's MLRi ITS Assets will operate as intended in the operational environment.	x		x	

WCT	Description of Works Completion Test	Acceptance Criteria	Independent Reviewer requirements to ascertain whether Acceptance Criteria met	Independent Reviewer Action (as described in General section above)			
				1	2	3	4
		introduction of the Contractor's additional and new technologies.					
14.4	The Contractor's MLRi ITS Assets have been comprehensively tested to ensure the integrity of the Transport Agency's and ATOC's ICT System.	<p>The Contractor has commissioned the Contractor's MLRi ITS Assets, including ATOC personnel acceptance testing (if required by ATOC), and has been signed off by ATOC.</p> <p>The Contractor has supplied all necessary updates to documentation relating to the operation of the Contractor's ITS equipment, subsystem and complete system, including systems operations manual, fibre optic information, power supply details, system configuration details, training manuals, firmware and software details, as a result of commissioning the MLRi ITS Assets.</p>	<p>The Independent Reviewer has received evidence of ATOC personnel certification that the Contractor's MLRi ITS Assets is ready for operation.</p> <p>The Independent Reviewer has confirmed to its reasonable satisfaction that the Contractor has supplied all necessary updates to the documentation for the full operation of the Contractor's ITS equipment, subsystem, complete system (including the requirements for ATOC), and that ATOC has accepted the MLRi ITS Assets into operation.</p>	x	x		
14.5	Traffic monitoring for the MLR Infrastructure Works has been	The Contractor has in place a measurement system that will monitor the MLR Infrastructure	The Independent Reviewer has confirmed to its reasonable satisfaction, including witnessing final testing, that the measurement system has been fully tested in accordance with the Finalised	x		x	

WCT	Description of Works Completion Test	Acceptance Criteria	Independent Reviewer requirements to ascertain whether Acceptance Criteria met	Independent Reviewer Action (as described in General section above)			
				1	2	3	4
	installed, commissioned and tested and meets the Project Agreement requirements.	Works, and has performed full-scale real time commissioning tests to adequately test all aspects of the system.	Inspection and Test Plans and Finalised commissioning plan (being part of the Works Completion Plan), and meets the Project Agreement requirements.				
14.7	ATOC protocols have been established in accordance with the Project Agreement requirements.	The Contractor has, if necessary, updated the operational and communication protocols with ATOC required under Schedule 12 (Service Requirements).	The Independent Reviewer has access to the protocols and has been provided evidence by the Contractor to the Independent Reviewer's reasonable satisfaction that the protocols are in compliance with the Project Agreement requirements.	x			
14.8	Not Used – WCT in relation to emergency service facilities addressed once as part of the Initial Works WCTs	Not Used	Not Used				
14.9	All required pedestrian, cyclist and recreational user facilities relating to the MLR Infrastructure Works have been constructed in accordance with the Project Agreement requirements.	The Contractor has constructed all pedestrian, cyclist and recreational user facilities relating to the MLR Infrastructure Works as appropriate to each facility in accordance with the Project Agreement requirements.	The Independent Reviewer has received QA records and operational testing results from the Contractor and confirmed to the Independent Reviewer's reasonable satisfaction that all pedestrian and cyclist facilities and safety and warning installations relating to the MLR Infrastructure Works are in accordance with the relevant Final Design Documentation and the Project Agreement requirements.	x			

WCT	Description of Works Completion Test	Acceptance Criteria	Independent Reviewer requirements to ascertain whether Acceptance Criteria met	Independent Reviewer Action (as described in General section above)			
				1	2	3	4
15	Compliance with overriding outcomes						
15.1	Not Used – the Safety Report (see WCT 15.1 in Appendix A) is not relevant to MLR Infrastructure Works	Not Used	Not Used				
15.2	The P2Wk Project achieves a KiwiRAP four star rating.	The Contractor has undertaken an assessment in accordance with the KiwiRAP guidelines and has met the requirements for a KiwiRAP four star rating.	The Independent Reviewer has received evidence of the Contractor's assessment and all necessary supporting documentation, and the Independent Reviewer has confirmed to its reasonable satisfaction that the assessment is accurate and complete and demonstrates that the P2Wk Project meets the requirements of a KiwiRAP four star rating.	x			
15.3	The MLR Infrastructure Works comply with the relevant certified Landscape and Urban Design Framework (ULDF) and the Urban and Landscape Design Sector Plans (ULDSPs) required by the relevant RMA Conditions.	The Contractor has constructed the MLR Infrastructure Works in accordance with the relevant Certified ULDF and ULDSPs.	The Independent Reviewer has received the certified ULDF and ULDSPs relevant to the MLR Infrastructure Works, and the Contractor has provided evidence to the Independent Reviewer's reasonable satisfaction that the MLR Infrastructure Works have been constructed in accordance with the relevant Final Design Documentation, and complies with the relevant Certified ULDF and ULDSPs.	x			x
16	Compliance with design working life requirements						
16.1	The MLR Infrastructure Works	The Contractor has constructed the MLR Infrastructure Works in	The Independent Reviewer has received warranties, guarantees and QA records from the Contractor, and the Contractor has confirmed to	x			x

WCT	Description of Works Completion Test	Acceptance Criteria	Independent Reviewer requirements to ascertain whether Acceptance Criteria met	Independent Reviewer Action (as described in General section above)			
				1	2	3	4
	have been constructed to meet the design working life requirements set out in the Project Agreement.	a manner to achieve the required design working life of elements in accordance with the Project Agreement.	<p>the Independent Reviewer's reasonable satisfaction that the MLR Infrastructure Works have been constructed in a manner that has allowed the required design working life to be achieved.</p> <p>Through representative visual inspections of the MLR Infrastructure Works, the Independent Reviewer has confirmed that there is no material damage to the MLR Infrastructure Works that adversely impacts the design working life expectancies.</p>				
17	Compliance with lighting and electrical requirements						
17.1	The MLR Infrastructure Works includes all lighting required to meet the Project Agreement requirements and Designation Condition D75.	The Contractor has constructed the MLR Infrastructure Works so that it includes all lighting required to meet the Project Agreement requirements and is installed in accordance with manufacturer's specifications.	<p>The Independent Reviewer has received from the Contractor all quality documentation (including compliance and field testing documentation), and the Contractor has confirmed to the Independent Reviewer's reasonable satisfaction that all lighting within the MLR Infrastructure Works in accordance with the Project Agreement requirements and the manufacturer's specifications, including with respect to levels of illumination.</p> <p>The Independent Reviewer has undertaken a visual night inspection and confirmed to its reasonable satisfaction that all lights within the MLR Infrastructure Works are operational and have achieved the desired level of illumination, in accordance with the Project Agreement requirements.</p>	x			x

WCT	Description of Works Completion Test	Acceptance Criteria	Independent Reviewer requirements to ascertain whether Acceptance Criteria met	Independent Reviewer Action (as described in General section above)			
				1	2	3	4
17.2	All electrical works within the MLR Infrastructure Works comply with all current legislation.	The Contractor has undertaken all electrical work within the MLR Infrastructure Works compliance with all current legislation.	The Independent Reviewer has received evidence from the Contractor that confirms to the Independent Reviewer's reasonable satisfaction that the electrical works within the MLR Infrastructure Works have been certified by a suitably qualified person in accordance with the applicable statutes, Regulations and Codes of Practice, and in particular the Electricity Act and Health and Safety in Employment Act 1992 and all Regulations, Codes of Practice recognised under those statutes, including but not limited to the NZ Electricity Code of Practice, AS/NZS3000, Electrical (Safety) Regulations, and Registered Utility Operators Codes and the Code.	x			
18	Compliance with overweight and over-dimension vehicle requirements						
18.1	The MLR Infrastructure Works are suitable for use by Overweight Loads and Over-dimension Loads and as an Over-dimension Route in accordance with the Project Agreement requirements.	The Contractor has constructed the MLR Infrastructure Works so that it is suitable for use by overweight and overdimension vehicles and as an Over-dimension Route in accordance with the Project Agreement requirements.	The Independent Reviewer has access to the Final Design Documentation and QA documentation detailing the location/extent of the Over-dimension Route within the MLR Infrastructure Works, and demonstrating that the required overdimension clearance envelope (excluding road safety barrier systems) has been provided, and the Contractor has confirmed to the Independent Reviewer's reasonable satisfaction that the Over-dimension Route within the MLR Infrastructure Works has been provided in accordance with the Final Design Documentation and that the required clearance envelope has been achieved.	x			

WCT	Description of Works Completion Test	Acceptance Criteria	Independent Reviewer requirements to ascertain whether Acceptance Criteria met	Independent Reviewer Action (as described in General section above)			
				1	2	3	4
19	Compliance with HPMV requirements						
19.1	The MLR Infrastructure Works are suitable for use by HPMVs in accordance with the Project Agreement requirements.	The Contractor has constructed the MLR Infrastructure Works so that it is suitable for use by HPMVs in accordance with the Project Agreement requirements.	The Independent Reviewer has access to Final Design Documentation including tracking curves for critical turning movements demonstrating that the required vehicle travelling at 20kph can undertake the movement (which may track into a flush median or adjacent lane but may not enter the opposing lane and will meeting all minimum clearances to kerbs and road furniture) within the MLR Infrastructure Works and the Contractor has confirmed to the Independent Reviewer's reasonable satisfaction that the required vehicle can safely undertake such movement in accordance with the Project Agreement requirements.	x			
20	Compliance with road safety barrier system requirements						
20.1	All road safety barrier systems within the MLR Infrastructure Works have been constructed in accordance with Project Agreement requirements.	The Contractor has constructed all road safety barrier systems within the MLR Infrastructure Works in accordance with the Project Agreement requirements.	<p>The Independent Reviewer has received from the Contractor quality records demonstrating that the road safety barrier systems within the MLR Infrastructure Works comply with the Project Agreement requirements.</p> <p>The Independent Reviewer has visually inspected a representative sample of road safety barrier systems to confirm to its reasonable satisfaction that the road safety barrier systems within the MLR Infrastructure Works meet the Final Design Documentation.</p>	x			x

WCT	Description of Works Completion Test	Acceptance Criteria	Independent Reviewer requirements to ascertain whether Acceptance Criteria met	Independent Reviewer Action (as described in General section above)			
				1	2	3	4
21	Compliance with utilities requirements						
21.1	The National Code of Practice for Utility Operators' Access to Transport Corridors has been complied with in respect of the MLR Infrastructure Works.	The Contractor has complied with the National Code of Practice for Utilities Access to the Transport Corridor in respect of the MLR Infrastructure Works, and any non-conformances have been rectified appropriately.	The Independent Reviewer has reviewed evidence submitted from the Contractor to the Transport Agency and confirmed to its reasonable satisfaction that the Contractor has complied with all of its obligations under the National Code of Practice for Utilities Access to the Transport Corridor in respect of the MLR Infrastructure Works (and that any previous non-conformances have been rectified appropriately).	x			
21.3	All utilities infrastructure within the MLR Infrastructure Works meets the Project Agreement requirements.	The Contractor has constructed all utilities infrastructure within the scope of the MLR Infrastructure Works in accordance with the Project Agreement requirements.	The Independent Reviewer has received the relevant Final Design Documentation and associated quality records, and the Contractor has confirmed to the Independent Reviewer's reasonable satisfaction that the utilities within the scope of the MLR Infrastructure Works have been constructed in accordance with the Final Design Documentation and the Project Agreement requirements.	x			
21.4	The Transport Agency utility ducts and chambers within the MLR Infrastructure Works have been constructed in accordance with the Project Agreement requirements.	The Contractor has constructed the MLR Infrastructure Works so that it includes the Transport Agency ducts and chambers that are required under the Project Agreement requirements.	The Independent Reviewer has received the quality records and has undertaken a representative sample of visual inspections of the ducts and chambers within the MLR Infrastructure Works, and has confirmed to its reasonable satisfaction that the Transport Agency ducts and chambers within the MLR Infrastructure Works comply with the Project Agreement requirements, including that ducts are to shape, are continuous, have suitable draw wires, and that covers to chambers are appropriately fastened and secure.	x			x

WCT	Description of Works Completion Test	Acceptance Criteria	Independent Reviewer requirements to ascertain whether Acceptance Criteria met	Independent Reviewer Action (as described in General section above)			
				1	2	3	4
22	Compliance with signs, delineation and pavement marking requirements						
22.1	All signs, delineation and pavement markings in relation to the MLR Infrastructure Works have been provided in accordance with the Project Agreement requirements.	The Contractor has erected and included in the MLR Infrastructure Works all signs, delineation and pavement markings in accordance with the Project Agreement requirements.	The Independent Reviewer has received and reviewed QA records and has confirmed to its reasonable satisfaction, including a representative sample of visual inspections that the signs in relation to the MLR Infrastructure Works have been erected and markings have been undertaken in accordance with the manufacturer's specifications and Final Design Documentation.	x			x
23	Compliance with pedestrian and cyclist requirements						
23.1	The MLR Infrastructure Works includes pedestrian and cyclist facilities that comply with the Project Agreement requirements.	The Contractor has constructed pedestrian and cyclist facilities required to be delivered as part of the MLR Infrastructure Works in accordance with the Project Agreement requirements.	The Independent Reviewer has received the relevant Final Design Documentation and associated quality records, and the Contractor has confirmed to the Independent Reviewer's reasonable satisfaction and the Independent Reviewer has undertaken sufficient visual inspections and QA audits to confirm that the pedestrian and cyclist facilities have been constructed in accordance with the relevant Final Design Documentation.	x			x
24	Compliance with location referencing requirements						
24.1	The MLR Infrastructure Works complies with the location referencing requirements set out in the Project Agreement.	The Contractor has provided location referencing for the MLR Infrastructure Works in accordance with the Project Agreement requirements.	The Independent Reviewer has received the relevant Final Design Documentation and associated quality records, and the Contractor has confirmed to the Independent Reviewer's reasonable satisfaction that the location referencing for the MLR Infrastructure Works has been provided in accordance with the Project Agreement requirements.	x			x

WCT	Description of Works Completion Test	Acceptance Criteria	Independent Reviewer requirements to ascertain whether Acceptance Criteria met	Independent Reviewer Action (as described in General section above)			
				1	2	3	4
25	Compliance with pavements and surfacing requirements						
25.1	The subgrade within the MLR Infrastructure Works provides, and will continue to provide, a minimum CBR value in accordance with the Final Design Documentation.	The Contractor has provided subgrade within the MLR Infrastructure Works that provides, and will continue to provide, a minimum CBR value in accordance with the Final Design Documentation.	Pursuant to the provisions relating to Contractor Hold Point tests set out in the Inspection and Test Plan, the Independent Reviewer has received the Finalised Inspection Test Plan and QA records for Pavements and Surfacing within the MLR Infrastructure Works, and through representative review of the quality records, and witnessed a representative sample of tests and has confirmed to its reasonable satisfaction that the Finalised test plans have been implemented and acceptance criteria achieved and that the subgrade within the MLR Infrastructure Works has been constructed in accordance with the Final Design Documentation.	x		x	
25.2	The MLR Infrastructure Works uses suitable pavement materials and has suitable pavement construction quality to meet the Project Agreement requirements.	The Contractor has utilised suitable pavement materials and suitable pavement construction quality within the MLR Infrastructure Works to meet the Project Agreement requirements.	Pursuant to the provisions relating to Contractor Hold Point tests set out in the Inspection and Test Plan, the Contractor has provided a copy of the Finalised Inspection and Test Plan and Process Control Plan for Pavements and Surfacing within the MLR Infrastructure Works with evidence to demonstrate that the plans have been implemented. The Independent Reviewer has checked all quality assurance records for all pavement material lots in respect of the MLR Infrastructure Works and confirmed compliance to its reasonable satisfaction, prior to pavement construction.	x			
			Pursuant to the provisions relating to Contractor Hold Point tests set out in the Inspection and Test Plan, the Independent Reviewer has witnessed a representative sample of construction quality tests on pavement lengths and layers within the MLR Infrastructure Works, and confirmed compliance to its reasonable satisfaction.	x		x	

WCT	Description of Works Completion Test	Acceptance Criteria	Independent Reviewer requirements to ascertain whether Acceptance Criteria met	Independent Reviewer Action (as described in General section above)			
				1	2	3	4
25.3	The MLR Infrastructure Works pavements have achieved compaction during construction that is sufficient to ensure achievement of the properties specified for each layer in the relevant Final Design Documentation.	The Contractor has achieved compaction during construction of the MLR Infrastructure Works that is sufficient to ensure achievement of the properties specified for each layer in the relevant Final Design Documentation.	<p>Pursuant to the provisions relating to Contractor Hold Point tests set out in the Inspection and Test Plan, the Independent Reviewer has received the Finalised Inspection and Test Plan and QA records for Pavements and Surfacing within the MLR Infrastructure Works and through:</p> <ul style="list-style-type: none"> review of a representative sample of the quality assurance records relating to pavement lengths and layers; and witnessing a representative sample of tests on pavement lengths and layers, <p>has confirmed to its reasonable satisfaction that compaction requirements in respect of the MLR Infrastructure Works have been achieved in accordance with the relevant Final Design Documentation and Project Agreement requirements prior to construction of the next layer.</p>	x		x	
25.4	The MLR Infrastructure Works pavements moisture content has been managed, in each layer, during Works Provisioning, meets the Project Agreement requirements, and has been checked by the Independent Reviewer prior to surfacing.	The Contractor has monitored, recorded and managed the moisture content of the pavement layers within the MLR Infrastructure Works throughout Works Provisioning in accordance with the Project Agreement requirements.	The Independent Reviewer has received the Finalised Inspection Test Plan and QA records and, through review of a representative sample of the quality records, has confirmed to its reasonable satisfaction that, within the MLR Infrastructure Works, the moisture content for any areas of unbound granular pavement prior to chip sealing is in accordance with the Final Design Documentation and Project Agreement requirements.	x			

WCT	Description of Works Completion Test	Acceptance Criteria	Independent Reviewer requirements to ascertain whether Acceptance Criteria met	Independent Reviewer Action (as described in General section above)			
				1	2	3	4
25.5	Surface shape of all traffic lanes and all shoulders within the MLR Infrastructure Works meets the Project Agreement requirements.	The Contractor has provided a surface shape of all traffic lanes and all shoulders within the MLR Infrastructure Works that meets the Project Agreement requirements.	<p>The Independent Reviewer has received of the Finalised Inspection Test Plan and QA records and through representative review of the quality records, and witnessed a representative sample of tests and has confirmed to its reasonable satisfaction that the pavement surface and rut depth in respect of the MLR Infrastructure Works have been achieved in accordance with the Project Agreement requirements.</p> <p>The Independent Reviewer will undertake visual inspections of surface shape for representative samples of the road surface prior to Works Completion to confirm to its reasonable satisfaction that the Project Agreement requirements for surface shape and rut depth in respect of the MLR Infrastructure Works have been met. In particular the surface shape must be such that:</p> <ul style="list-style-type: none"> • There must be no obvious defects related to poorly constructed longitudinal or transverse joints. • No area of the completed surface has any depressions that will allow water to pond. • No visible cracking. 	x		x	x
25.6	Roughness of the carriageways within the MLR Infrastructure Works complies with the Project Agreement requirements.	The Contractor has provided confirmation that the roughness of the carriageways within the MLR Infrastructure Works complies with the Project Agreement requirements.	The Independent Reviewer has reviewed the Finalised Inspection and Test Plan and test data and witnessed a sample of NAASRA tests recorded after completion of the wearing course prior to MLR Completion Works, and confirmed to its reasonable satisfaction that the roughness of the carriageways within the MLR Infrastructure Works is in accordance with the Project Agreement requirements.	x		x	

WCT	Description of Works Completion Test	Acceptance Criteria	Independent Reviewer requirements to ascertain whether Acceptance Criteria met	Independent Reviewer Action (as described in General section above)			
				1	2	3	4
25.7	There are, within the MLR Infrastructure Works, no potholes in the pavement surfacing or formed shoulders, and no edge break or seal loss encroaching into the surfacing.	The Contractor has provided pavement surfacing throughout the MLR Infrastructure Works that has no potholes in the pavement surfacing or formed shoulders, and no edge break or seal loss encroaching into the surfacing.	The Independent Reviewer has undertaken a representative sample of visual inspections of the road surface prior to MLR Completion to confirm to its reasonable satisfaction that this WCT has been met.				x
26	Compliance with Bridges and Major Culverts requirements						
26.1	The Bridges and Major Culverts (if any) within the MLR Infrastructure Works have been constructed in accordance with the Project Agreement requirements and RMA Conditions.	The Contractor has constructed the Bridges and Major Culverts (if any) within the MLR Infrastructure Works in accordance with the Project Agreement requirements, RMA Conditions and the Final Design Documentation.	The Independent Reviewer has received Final Design Documentation, including Overweight Vehicle conditions of Operation, associated quality records (including materials storage, handling and maintaining), and the Contractor has confirmed to the Independent Reviewer's reasonable satisfaction that the MLR Infrastructure Works has been constructed in accordance with the Final Design Documentation, including design provisions for the construction loadings.	x			
			The Independent Reviewer has observed a representative sample of construction traffic traversing any Bridges and Major Culverts and has received evidence from the Contractor that estimated resultant loadings reconcile with design provisions made for construction traffic.				x
			The Independent Reviewer has undertaken a visual inspection of all completed Bridges and Major Culverts (if any) to check for any signs of early fatigue or defective workmanship, and that any corrective actions have been satisfactorily completed.				x

WCT	Description of Works Completion Test	Acceptance Criteria	Independent Reviewer requirements to ascertain whether Acceptance Criteria met	Independent Reviewer Action (as described in General section above)			
				1	2	3	4
			The Independent Reviewer has access to all surface preparation, proposed protective coatings, application, transportation and testing records in accordance with AS/NZS 2312 and confirmed by representative sampling that to its reasonable satisfaction the records are complete and accurate.	x			
26.2	Not Used – WCT relating to piles not relevant to the MLR Infrastructure Works	Not Used	Not Used				
27	Compliance with Environmental Management Works Requirements						
27.1	The MLR Infrastructure Works has been constructed in accordance with the Outline Plan.	The Contractor has constructed the MLR Infrastructure Works in accordance with the Outline Plan.	The Independent Reviewer has received evidence provided by the Contractor to the Transport Agency that Auckland Council has confirmed that construction has been completed in accordance with the Outline Plan.		x		
28	Compliance with Greenroads™ requirements						
28.1	P2Wk Project will achieve a Silver certification in terms of Greenroads™ assessment by the Greenroads Foundation.	The Contractor has designed and constructed the P2Wk Project so that it will obtain a Silver certification from the Greenroads™ Foundation.	The Contractor has provided evidence to the Independent Reviewer from the Greenroads™ Foundation that the P2Wk Project will achieve Silver certification. This evidence may include demonstrating to the Independent Reviewer's reasonable satisfaction that the Contractor has submitted an application to (which application has been received by) the	x			

WCT	Description of Works Completion Test	Acceptance Criteria	Independent Reviewer requirements to ascertain whether Acceptance Criteria met	Independent Reviewer Action (as described in General section above)			
				1	2	3	4
			Greenroads Foundation that demonstrates the P2Wk Project will achieve Silver certification (even if certification has not been received at that time).				
29	Compliance with drainage requirements						
29.1	The drainage for the MLR Infrastructure Works has been constructed in accordance with the Project Agreement requirements and the relevant RMA Conditions.	The Contractor has constructed the drainage for the MLR Infrastructure Works in accordance with the Project Agreement requirements, relevant RMA Conditions and the relevant Final Design Documentation.	<p>The Independent Reviewer has received the Final Design Documentation for the MLR Infrastructure Works and associated quality records, and the Contractor has confirmed to the Independent Reviewer's reasonable satisfaction that the drainage for the MLR Infrastructure Works has been constructed in accordance with the relevant Final Design Documentation and the relevant RMA Conditions.</p> <p>The Independent Reviewer has undertaken a visual inspection of a representative sample of the drainage system for the MLR Infrastructure Works and confirmed to its reasonable satisfaction that storm water runoff is collected from the road surface and surrounding topography and transferred to transverse drainage systems without impacting adjacent slopes.</p> <p>The Independent Reviewer has undertaken a visual inspection of a representative sample of the key drainage elements for the MLR Infrastructure Works, in particular those on cut slopes, and confirmed to its reasonable satisfaction that they are free of debris is operating as intended without affecting adjacent slopes and that observed if there are any signs of slope erosion or slips that could impinge on the intended operation of the Drainage System for the MLR Infrastructure Works and where any are observed, that appropriate mitigation</p>	x			
							x
							x

WCT	Description of Works Completion Test	Acceptance Criteria	Independent Reviewer requirements to ascertain whether Acceptance Criteria met	Independent Reviewer Action (as described in General section above)			
				1	2	3	4
			measures are in place in each case and that there are no defects, anomalies or early signs of fatigue.				
29.2	The stream diversion(s) for the MLR Infrastructure Works have been executed in accordance with the Project Agreement requirements and RMA Condition RC52.	The Contractor has constructed a stream diversion solution that will achieve the design working life in accordance with the Project Agreement requirements and the relevant RMA Conditions.	The Independent Reviewer has received the relevant Final Design Documentation for the MLR Infrastructure Works, and has confirmed by way of visual inspection of a representative sample to the Independent Reviewer's reasonable satisfaction that the stream diversions for the MLR Infrastructure Works are in compliance with the relevant Final Design Documentation and the relevant RMA Conditions.	x			x
29.3	All Culverts and drainage structures within the MLR Infrastructure Works comply with the Project Agreement requirements and the relevant RMA Conditions.	The Contractor has constructed all Culverts and drainage structures within the MLR Infrastructure Works in compliance with the Project Agreement requirements.	The Independent Reviewer has access to all material inspection and drainage installation data relating to the MLR Infrastructure Works which confirms that all materials/pre cast structures conform to the relevant NZ standard in relation to bedding, backfill, pipes, joint and leakage, manholes, headwalls, sumps and all other drainage materials/structures.	x			
29.4	All proprietary drainage products within MLR Infrastructure Works have been installed in accordance with the manufacturer's specifications.	The Contractor has installed all proprietary products within the MLR Infrastructure Works in accordance with the manufacturer's specifications.	The Independent Reviewer has access to data and has confirmed to its reasonable satisfaction by visual inspection that all proprietary products within the MLR Infrastructure Works have been installed in accordance with the manufacturer's specifications.	x		x	

WCT	Description of Works Completion Test	Acceptance Criteria	Independent Reviewer requirements to ascertain whether Acceptance Criteria met	Independent Reviewer Action (as described in General section above)			
				1	2	3	4
29.5	All rock rip-rap and scour protection measures within the MLR Infrastructure Works are in accordance with the Project Agreement requirements.	The Contractor has, within the MLR Infrastructure Works, provided all rock rip-rap, and other scour protection works, meeting the required quality and durability and performance requirements in accordance with the Project Agreement requirements.	The Independent Reviewer has access to all QA documentation, and the Contractor has confirmed to the Independent Reviewer's reasonable satisfaction (including by the Independent Reviewer undertaking visual inspection) that such protections within the MLR Infrastructure Works are complete and are in accordance with the relevant Final Design Documentation and the Project Agreement requirements.	x			x
30	Compliance with Third Party Property Agreements						
30.1	All works required under the Third Party Property Agreements relevant to the MLR Infrastructure Works are complete.	The Contractor has completed all works required under the Third Party Property Agreements relevant to the MLR Infrastructure Works.	The Independent Reviewer has received the Third Party Property Agreement Register and confirmation from the Contractor to the Independent Reviewer's reasonable satisfaction that all works within each of the Third Party Property Agreements have been completed.	x			
		The Contractor has prepared a Third Party Property Agreement Register that provides details of all works required under each Third Party Property Agreement relevant to the MLR Infrastructure Works, together with details and records demonstrating that the works have been completed to the required standard and to the reasonable satisfaction of the	The Independent Reviewer has inspected a representative sample of works under the Third Party Property Agreements relevant to the MLR Infrastructure Works and the Contractor has confirmed to the Independent Reviewer's reasonable satisfaction that these works have been completed in accordance with the relevant Third Party Property Agreements or the Works Requirements, as applicable.				x

WCT	Description of Works Completion Test	Acceptance Criteria	Independent Reviewer requirements to ascertain whether Acceptance Criteria met	Independent Reviewer Action (as described in General section above)			
				1	2	3	4
		relevant third party property owner.					
31	Compliance with Construction requirements						
31.1	ISN (or other health and safety database or service generally used by the Transport Agency that is reasonably notified to the Contractor) has been updated in accordance with the Project Agreement requirements.	The Contractor has updated the ISN (or other health and safety database or service generally used by the Transport Agency that is reasonably notified to the Contractor) with health and safety data from Contractor's operations from construction start until Full Service Commencement.	The Contractor confirms to the Independent Reviewer's reasonable satisfaction that ISN (or such other health and safety database or service generally used by the Transport Agency and notified to the Contractor) has health and safety data from Contractor's operations from construction start until Full Service Commencement.	x			

WCT	Description of Works Completion Test	Acceptance Criteria	Independent Reviewer requirements to ascertain whether Acceptance Criteria met	Independent Reviewer Action (as described in General section above)			
				1	2	3	4
32	Continued compliance						
32.1	Where staged MLR Completion has been achieved with respect to any element or section prior to the overall MLR Completion, such elements and sections continue to meet the requirements of the MLR Completion Tests at the date the MLR Completion Certificate is issued. This shall not include any re-assessment of any Works Completion Test that was certified as complete as part of Initial Works Completion.	The Independent Reviewer has confirmed to its reasonable satisfaction that all such elements and sections continue to meet the requirements of the MLR Completion Tests. This may include through re-test, inspection, review of maintenance documentation and any other method the Independent Reviewer considers appropriate. This shall not include any re-assessment of any Works Completion Test that was certified as complete as part of Initial Works Completion.		x	x	x	x

Appendix D: Close-out Tests

COT	Description of Close-out Test	Acceptance Criteria	Independent Reviewer/Transport Agency requirements to ascertain whether Acceptance Criteria met	Independent Reviewer Action (as described in General section above)			
				1	2	3	4
1	All Code Compliance Certificates required with respect to the P2Wk Project are in place.	The Contractor has obtained all Code Compliance Certificates required with respect to the P2Wk Project.	The Contractor has provided to the Independent Reviewer a copy of all required and current "Code Compliance Certificates" relating to the P2Wk Project and the Independent Reviewer has reviewed the documentation and is satisfied that it is accurate and complete and that it has been signed by an authorised Local Authority representative.	x			
2	A legal survey is completed using a registered surveyor to finalise the boundaries of the P2Wk Operating Site in accordance with the Project Agreement requirements.	<p>The Contractor has undertaken the legal survey as required by Part 4 (P2Wk Operating Site and Return of Surplus Land) of Schedule 5 (Property).</p> <p>The legal survey must be completed by an appropriately qualified surveyor and cadastral plans produced in a format suitable for legalisation, including formalisation of all easements and rights of way pertaining to each individual parcel, or amalgamated parcels of land.</p>	The Independent Reviewer is presented with documentary evidence to his reasonable satisfaction that all legal surveys have been completed by the Contractor and the legal boundaries have been finalised by the Transport Agency.	x			x
3	Surplus Land has been Returned to the Transport Agency in accordance with	The Contractor has ensured all land to be Returned has met the requirements set out in Part 4 (P2Wk Operating Site	The Contractor has provided evidence and the Independent Reviewer has confirmed to its reasonable satisfaction, including by way of visual inspections, that each parcel of Surplus Land has been returned in	x			x

COT	Description of Close-out Test	Acceptance Criteria	Independent Reviewer/Transport Agency requirements to ascertain whether Acceptance Criteria met	Independent Reviewer Action (as described in General section above)			
				1	2	3	4
	the Project Agreement requirements.	and Return of Surplus Land) of Schedule 5 (Property).	<p>accordance with the Project Agreement requirements by the Planned Close-out Date and in accordance with the specific Close-out Tests, including:</p> <ul style="list-style-type: none"> • compliance with the RMA Conditions; • compliance with all Disclosed Title Matters applicable to the land; • the physical condition of the land; • remediation of any former construction yards or cut and/or fill sites; • removal and suitable disposal of contamination, demolition materials, temporary fences, areas of temporary or redundant seal, surplus building materials, trash, litter and rubbish; • fencing standard and requirements (if any); • removal of temporary structures; • removal of temporary access ways; and • reinstatement of all access ways, tracks, farming related infrastructure (water supplies, troughs, cattle stops, etc) and drainage paths. 				

COT	Description of Close-out Test	Acceptance Criteria	Independent Reviewer/Transport Agency requirements to ascertain whether Acceptance Criteria met	Independent Reviewer Action (as described in General section above)			
				1	2	3	4
4	The P2Wk Project complies with all RMA Conditions.	The Contractor has complied with all RMA Conditions.	The Contractor has provided to the Independent Reviewer evidence that confirms compliance from Auckland Council.	x			
5	CS-VUE (or an equivalent consent compliance database approved by the Transport Agency) has been updated.	The Contractor has updated CS-VUE (or an equivalent consent compliance database approved by the Transport Agency).	The Contractor has confirmed to the Independent Reviewer's reasonable satisfaction that CS-VUE (or an equivalent consent compliance database approved by the Transport Agency) has been updated, and that update is complete and accurate.	x			
6	All as-built drawings have been provided to the Transport Agency in accordance with the Project Agreement requirements.	The Transport Agency has been provided with a complete set of as-built drawings.	The Independent Reviewer has received evidence of transmittal to the Transport Agency of a complete set of certified as-built drawings, and confirmed to its reasonable satisfaction, including via visual inspection, that they are complete, accurate and in accordance with paragraph 1 below (As Built Drawings) of this Appendix B.	x	x		x
7	All required planting has been established in accordance with the RMA Conditions and Project Agreement requirements.	The Contractor has established, maintained, monitored and replaced (as required) all required planting in accordance with the requirements of the RMA Conditions and the Close-out Plan.	The Contractor has provided evidence and confirmed to the Transport Agency's reasonable satisfaction that evidence of compliance from Auckland Council has been received.	No Independent Reviewer action			
8	All post-construction ecological monitoring for the period until the date that is 12 months after Full Service Commencement has been	The Contractor has completed post-construction ecological monitoring and any necessary actions arising out of review processes in accordance with	The Contractor has provided evidence and confirmed to the Independent Reviewer's reasonable satisfaction that, for the 12 month period following Full Service	x			

COT	Description of Close-out Test	Acceptance Criteria	Independent Reviewer/Transport Agency requirements to ascertain whether Acceptance Criteria met	Independent Reviewer Action (as described in General section above)			
				1	2	3	4
	completed in accordance with the RMA Conditions and Project Agreement requirements.	the requirements of the RMA Conditions.	Commencement, evidence of compliance from Auckland Council has been received.				
9	All post-construction ecological monitoring for the period from the date that is 12 months after Full Service Commencement until the Expiry Date has been completed in accordance with the RMA Conditions and Project Agreement requirements.	The Contractor has completed all post-construction ecological monitoring and any necessary actions arising out of review processes in accordance with the requirements of the RMA Conditions.	The Contractor has provided evidence to the Transport Agency and confirmed to its reasonable satisfaction that, from the 12 month period following Full Service Commencement until the Expiry Date, evidence of compliance from Auckland Council has been received.	No Independent Reviewer action			

1. As-built drawings

The Contractor must provide to the Transport Agency all as-built drawings and inventory information, including:

- (a) one complete set of AutoCAD (or equivalent vector drawing software as agreed by the Transport Agency) files including all associated files; and
- (b) one complete set of un-editable, interactive Adobe PDF files exported from the CAD As-Built Drawings, to serve as a read-only set for viewing, downloading and printing by users of the Transport Agency As-Built System, with the first drawing/s on the disk to be a full drawing list and denoted as such,

and all as-built drawings must:

- (c) be provided in a format compatible with the relevant Transport Agency databases;
- (d) comply with the relevant AS/NZS series 1100 standard on technical drawing;
- (e) be labelled with a unique file name, including both the Transport Agency project name and a unique drawing number or code used to reference the drawing, with all components of the filename to be upper case and separated by underscores;
- (f) show the sizes, dimensions, locations and materials of all parts of the P2Wk Project (including all utilities);
- (g) be prepared using the same co-ordinate system and datum as the consented scheme design;
- (h) include a correctly positioned and labelled grid on all plan drawings, with the units of measure clearly labelled in metres or millimetres;
- (i) where possible, be layered to allow a smooth transition from CAD to GIS;
- (j) group all similar features accordingly, for example lighting, drainage, signage, road markings, utility services, Bridge details;
- (k) show all finished ground surfaces beyond the completed permanent works for all P2Wk Project Land, including all landscape fills, waste disposal areas, borrow areas, and reinstated temporary facility areas; and
- (l) include the following document attributes in a tabular format:

Name	Description	Example
Project Name	The name of the project for which this document was generated	P2WKPPP
State highway	The State highway on which the asset is located	
Reference Station (RS)	Location Reference that is associated with the drawing	

Name	Description	Example
Route Position (RP)	Location Reference that is associated with the drawing. Distance from the preceding RS	
Asset Type	Type of Asset	
Asset ID	For bridge structures this will be the Bridge Structure Identifier, as recorded in the Transport Agency's Bridge Descriptive System	
Asset No.	For bridge structures, this will be the Bridge Structure Number, as posted on the road and recorded in the Bridge Data System	
Asset Name	The name of the asset (mandatory for structures)	
Filename	Filename of the document as on the supplied disc provided, using the same format	
Location Name	Description of the location e.g., river name	
Document Type	The nature of the As-Built document, e.g., Drawing, Technical Report	
Document Title	The name of the document	
Document Number	The number or code given to this document e.g., drawing number	
Document Date	The date on which a document was released (not necessarily the same date on which it was loaded into the repository)	
Sheet Number	Where a drawing has more than one sheet this is the sheet number	
Document Revision	For drawings this should state "AB" for As-Built	
Application Type and Version	The application and version that was used to create the document	
Consultant	The name of the consulting organisation that generated the document	
Consultant Town	The office from which the document originated	Auckland
IP Owner	The owner of the copyright for the document	Transport Agency