

Traffic lights on SH2 Maunganui Road near Bayfair roundabout



From mid-February, traffic lights will be operating on the city-bound lanes near the Bayfair roundabout.

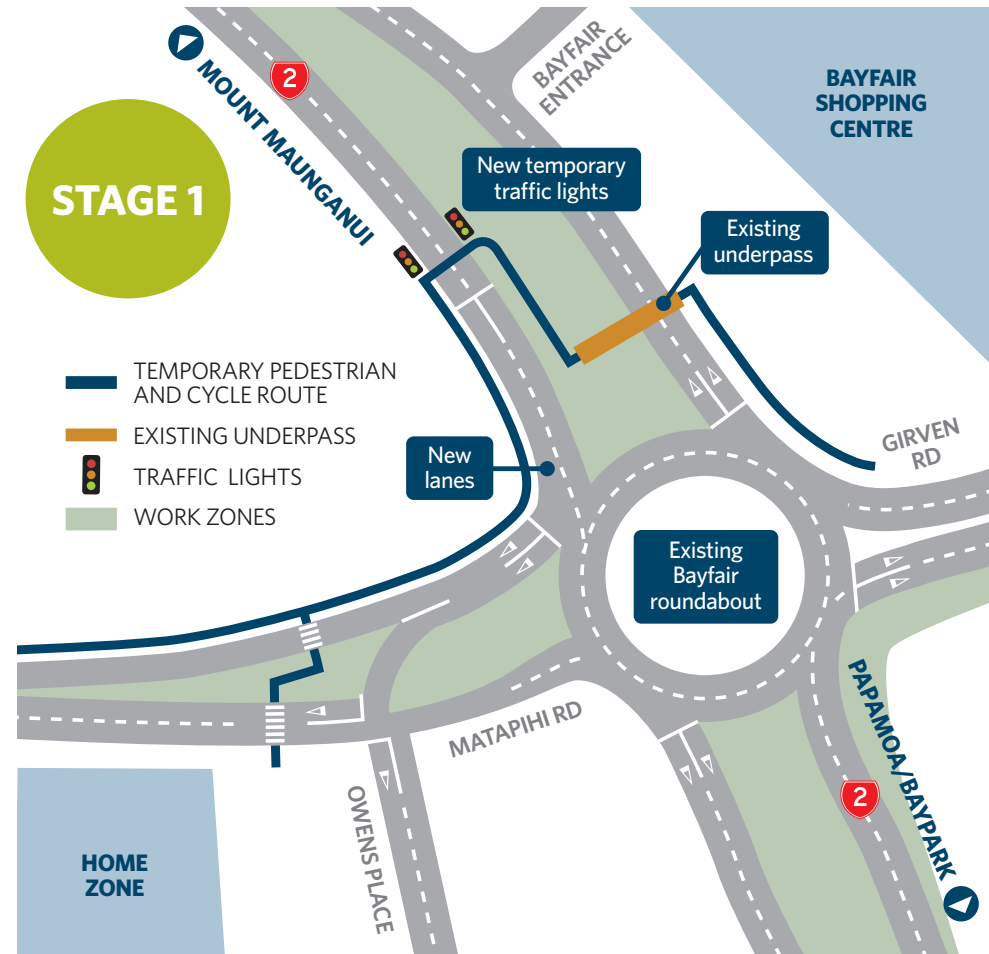
Pedestrians and cyclists will need to use a combination of traffic lights and the existing underpass to cross SH2 Maunganui Road.

A raised platform will be in place to slow motorists down, and escorts will be at each of the crossing points to assist users with the new arrangement.


This temporary crossing will be in place while work on the new Bayfair roundabout and flyover take place.


We thank you for your patience while we carry out work in this area.

The map provides an indication of how the temporary crossing will operate.



 **More information**

 0508 222 4636

 nzta.govt.nz/baylink

 NZTAWaikatoBoP

 baylink@nzta.govt.nz