



Kaeo Bridge safety improvements

Works are underway to improve the safety and resilience of Northland roads. As part of this, the NZ Transport Agency is looking at replacing the single lane bridge at Kaeo with a new two-lane bridge as well as a roundabout at the intersection of Whangaraoa Road.

People in the community have raised the following issues:

- Cars travel too quickly along this road – we don't want the new bridge to encourage people to speed.
- The intersection with Whangaraoa Road is dangerous – we want that to be made safer.
- Substantial flooding through Kaeo – we don't want the new bridge to increase the possibility of extended flooding.

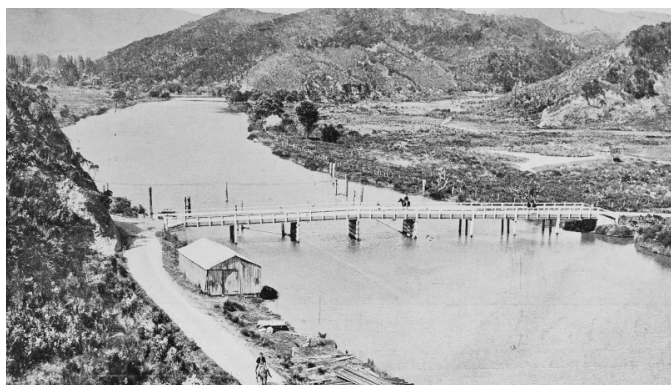
The team has considered several different designs and have come up with a solution that takes on some of the advice we have received from the local community (see over page).

The new option avoids any upstream impacts to Kaeo by not increasing the height of the road north of the one-way bridge.

This area used to act as floodplains for the Kaeo river, so the river will naturally want to flow through here and by not

increasing the height of the road, we won't create a dam which could affect the Kaeo township.

There will be a formal opportunity to give feedback on this design at hui and a public community day. The dates for these are still to be confirmed so watch this space.



The bridge - yesterday and today
Horse and cart vs a different kind of horse power.





PROJECT CONTACTS



Please contact Barbara Ware **027 809 8186** or barbara.ware@nzta.govt.nz
Keep up with progress at: [www.nzta.govt.nz/projects/connecting-northland/
kaeo-bridge/](http://www.nzta.govt.nz/projects/connecting-northland/kaeo-bridge/)

