



# The Bulletin Kaikoura earthquake update

**SIGN UP**

To receive weekly updates online here

[bit.ly/NCTIRBulletinSignUp](http://bit.ly/NCTIRBulletinSignUp)



## WHAT DOES 'OPEN' LOOK LIKE?

Last week the NZ Transport Agency confirmed plans to reopen State Highway 1 (SH1) north of Kaikoura to traffic in December, restoring the coastal highway link from Picton to Christchurch in time for Christmas travel.

The announcement will allow local communities, businesses and holidaymakers to plan ahead for the summer season. While plans are to reopen SH1 as early as is safely possible to provide better access to Kaikoura and other communities, it is important people understand that the full rebuild of the highway will not be completed in December. This work will continue well into 2018.

When the road reopens there will be some unsealed surfaces, lane closures and stop/go traffic controls. The route will also need to be closed at night for several months as a safety precaution, and planned closures may also be needed over time to carry out high-impact work. Any planned closures will be advertised in advance wherever possible.

Information about 'what open looks like' is being shared via a dedicated web page - [www.nzta.govt.nz/p2c](http://www.nzta.govt.nz/p2c) - which includes some detailed Frequently Asked Questions to help address common themes.

Including questions such as 'When will the actual opening date be confirmed?' and 'Will the road be open 24/7?'

The page will be updated regularly as work progresses towards reopening. If you have any further questions you'd like answered, please email us at [info@nctir.com](mailto:info@nctir.com).

The teams on the project have worked hard to meet the target of reopening the road in time for the holidays often working under very difficult conditions at a scale unprecedented in New Zealand.

Every wet weather day has placed pressure on the work programme and the ability to keep SH1 open could be affected by weather and other events.

Safety for road users on the reopened SH1 is top priority.



Site 2, Irongate, before - December 2016



Site 2, Irongate, during August 2017

This weekly bulletin provides the latest information about the rebuild of road and rail networks damaged by the Kaikoura earthquake in November 2016. The bulletin is produced by the North Canterbury Transport Infrastructure Recovery (NCTIR) - an alliance representing the NZ Transport Agency and KiwiRail, on behalf of Government.





## MOVING MONSTER BRIDGE BEAMS TO KAIKOURA

HEB Construction Transport Supervisor Darryl Holden doesn't quite count bridge beams in his sleep, but he is looking forward to a good night's sleep when the last of these concrete monsters is delivered for the bridges being built on State Highway 1, north of Kaikoura.

From his Tauranga base, Darryl has to get each beam - one at a time - from the concrete works in Mt Maunganui, Rotorua, Hastings and Christchurch to Kaikoura. It's a 24/7 operation with each truckload measuring up to 32 metres long and weighing 75 tonnes. Up to 14 beams are on the road each week, at various times and on various days, to spread the impact on other motorists.

### Beam me up - to Kaikoura

It is 3.30am on Monday in Rotorua and most people are fast asleep. A single giant beam is loaded with a 'beam team' (like Tex, Neil, Glen and Ian pictured overleaf) about to hit the road - two pilot vehicle drivers, the truck driver and a 'jinker' driver (these beams are so long that a 'jinker' trailer attached under the back of the load means a second driver can independently steer that end - critical to ease around tight hairpin corners as pictured overleaf).

By 1.30pm that day they've negotiated busy North Island roads, Wellington city traffic, and are on the ferry to Picton.

The team takes an overnight break in Picton and starts the final part of their journey to Kaikoura at 4am on Tuesday. This is a hugely demanding day ahead on the alternate Picton to Christchurch route and includes tight bends, single-lane bridges, multiple road improvement work sites, and a tough alpine pass - with four times the usual amount of traffic because of the closure of SH1 through Kaikoura.

As the tunnels on SH1 south of Kaikoura are so narrow, they turn off just north of Culverden on to the Inland Road (Route 70). This road is even narrower and more demanding, but the team finally relaxes after reaching Kaikoura around 3pm on Tuesday.

But it doesn't stop there. There are now beams to collect from Christchurch, so following an overnight break, the team is again back on the road to pick one of these up. An overnight break Wednesday and they can then finally head back home to the North Island on Friday afternoon, ready to start all over again.

Darryl says while his teams are highly experienced with large loads, one of their biggest challenges is other drivers on the road. He says they have had a fantastic overall response and he praises the patience and support of other motorists which is helping to get the job done and keep everyone safe.

### If you see a beam:

- While extremely long, these trucks can take breaks at Murchison, Springs Junction and Waiau. The team welcomes interest, so take the opportunity to get up close and chat about what it takes to move a monster load.
- If it's on the move, a pilot vehicle driver might direct you to pull over so the beam truck can pass. Please follow all instructions. Your patience is appreciated and helps to keep everyone safe.

## BEAMS ARE BEING TRANSPORTED FROM ALL OVER NEW ZEALAND TO KAIKOURA FOR BRIDGE CONSTRUCTION ON STATE HIGHWAY 1 NORTH OF THE TOWN.

WATCH OUR PROGRESS BELOW...







Bridge beam going around a hairpin corner



Bridge beam with jinker trailer at the back



The beam team



## OPEN/CLOSED SCHEDULE FOR SH1 SOUTH OF KAIKOURA

### Reminder - next upcoming closure:

- Monday 6 November to Friday 10 November

There will be local drive-throughs each day, with the Inland Road (Route 70) available for travel 24/7 when SH1 south of Kaikoura is closed.

### The new 'normal' open/closed schedule:

- Friday to Monday - open 7am to now 8pm to the public (closed overnight).
- Tuesday to Thursday - open at 7am, and then again for one hour between 6pm and 7pm for the local drive-throughs (closed the rest of the day and overnight).

### Marlborough Anniversary Weekend SH1 South opening hours:

- Friday 27 October open 7am to 8pm (closed overnight).
- Saturday, Sunday and Monday open 7am to 8pm (closed every night).
- Tuesday 31 October - back to the 'normal' schedule - open for local drive-throughs at 7am and between 6pm-7pm.

When travelling from Christchurch please allow at least three hours travel time to and from Kaikoura, on either SH1 or the Inland Road (Route 70).





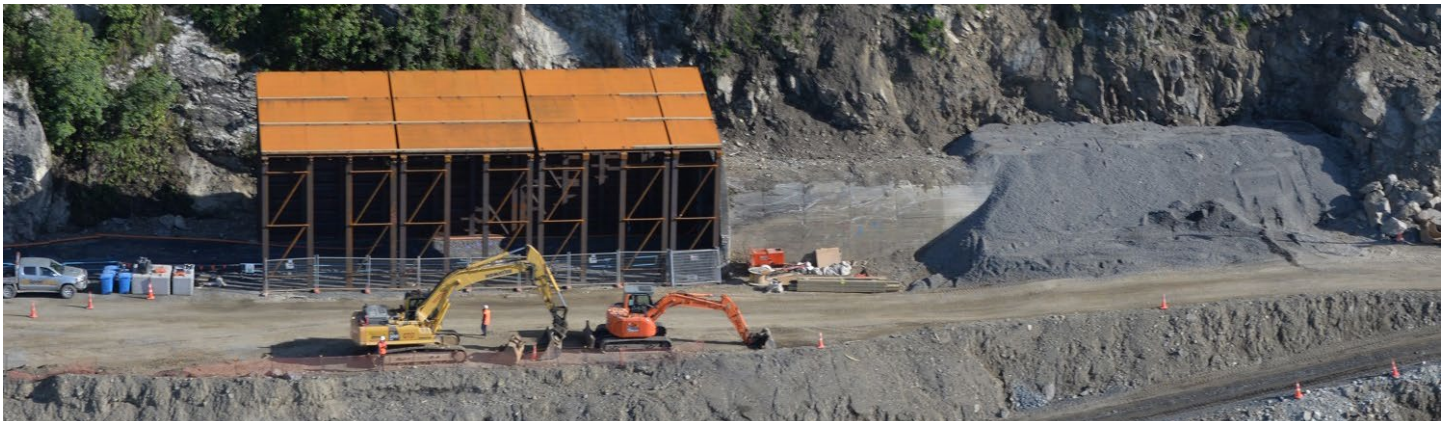
## 19 DAYS AT TUNNEL 19

Placing a temporary rock shelter on the southern end of Tunnel 19 near Ohau Point was no small feat last month.

The tunnel team moved the rail onto a permanent alignment, dug out the area for pre-cast foundations, and erected and put in place the steel structures that would make up the shelter. This temporary rock shelter is essential for freight and work trains to safely pass through the area, and particularly for those who walk through on the 'Wae Wae Waka' walking bus each day to work.

Tunnels Manager Rafael Ballen explains: 'The rock shelter is comprised of three sections of structural steel. A single section weighs about 14 tonnes, while a longer section weighs 45 tonnes. The shelter spans over the rail to protect the rail and provide a safe working environment for the tunnel team, whose end goal is to permanently extend the tunnel by about 75 metres.'

'I'm very proud of what our team accomplished. We had to think outside of the box with design, 24/7 fabrication, and installation to implement temporary solutions safely, and in such a short amount of time. This is the power of teamwork, without each other, we could not have completed this project in just 19 days.'



### KEEP UP-TO-DATE

How to contact us and keep up to date with our road and rail projects:

- Subscribe to our weekly bulletin by emailing [info@nctir.com](mailto:info@nctir.com), with 'Bulletin' in the subject line
- Visit our website: [www.nzta.govt.nz/kaikoura-earthquake-response/](http://www.nzta.govt.nz/kaikoura-earthquake-response/)
- Call our freephone: **0800 NCTIR EQ** (0800 628 4737)
- Email us if you have a question: [info@nctir.com](mailto:info@nctir.com)
- Attend a community meeting - keep an eye on local newspapers for details
- Follow us on Facebook, see: NZ Transport Agency - South Island [www.facebook.com/nztasouthisland/](https://www.facebook.com/nztasouthisland/) and KiwiRail [www.facebook.com/kiwirailNewZealand/](https://www.facebook.com/kiwirailNewZealand/)
- For travel information about road conditions, see: [www.nzta.govt.nz/traffic/regions/11](http://www.nzta.govt.nz/traffic/regions/11)

### GET REAL-TIME TRAVEL INFORMATION FOR OUR ROUTE

On the NZ Transport Agency's website: [www.nzta.govt.nz/traffic](http://www.nzta.govt.nz/traffic)

By phoning **0800 4 HIGHWAYS** (0800 44 44 49)

On the Transport Agency's social media: [www.nzta.govt.nz/contact-us/connect-with-us/](http://www.nzta.govt.nz/contact-us/connect-with-us/)