

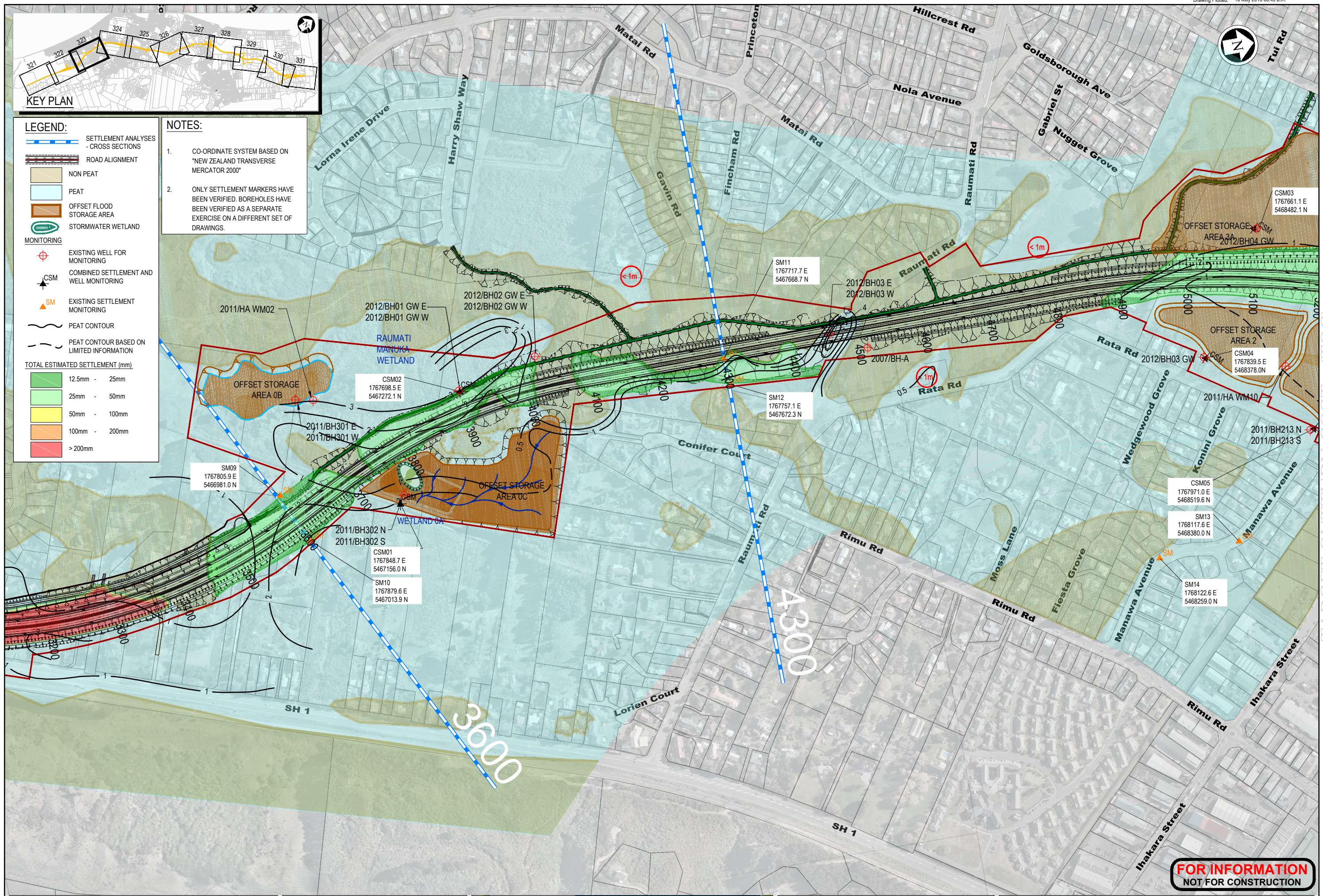


LEGEND:

- SETTLEMENT ANALYSES - CROSS SECTIONS
- ROAD ALIGNMENT
- NON PEAT
- PEAT
- OFFSET FLOOD STORAGE AREA
- STORMWATER WETLAND
- MONITORING
- EXISTING WELL FOR MONITORING
- COMBINED SETTLEMENT AND WELL MONITORING
- EXISTING SETTLEMENT MONITORING
- PEAT CONTOUR
- PEAT CONTOUR BASED ON LIMITED INFORMATION
- TOTAL ESTIMATED SETTLEMENT (mm)
 - 12.5mm - 25mm
 - 25mm - 50mm
 - 50mm - 100mm
 - 100mm - 200mm
 - >200mm

NOTES:

- CO-ORDINATE SYSTEM BASED ON "NEW ZEALAND TRANSVERSE MERCATOR 2000"
- ONLY SETTLEMENT MARKERS HAVE BEEN VERIFIED. BOREHOLES HAVE BEEN VERIFIED AS A SEPARATE EXERCISE ON A DIFFERENT SET OF DRAWINGS.



FOR INFORMATION NOT FOR CONSTRUCTION

No.	Revision	By	Chk	Appd	Date
4	FOR SEMP UPDATE	DAP	WH		15.05.13
3	FOR SEMP UPDATE	RAL	WH		09.04.13
2	FOR INFORMATION	WZC	WH		09.04.13
1	FOR INFORMATION	WZC			24.05.12

Original Scale (A1)	Design	LC	16.08.11	Approved For TOC
1:2500	Drawn	WZC	09.04.13	
Reduced Scale (A3)	Design	WZC		
1:5000	Check			

NZ TRANSPORT AGENCY

Mackays to Peka Peka

Project: SH1 MACKAYS TO PEKA PEKA EXPRESSWAY
RP 1012/0.00 TO 1023/5.00

Title: SETTLEMENT MONITORING PLANS
SHEET 3 OF 11

Document Set	Document No.	Rev.
M2PP-TOC-SKT	GT-SE-323	4

TARGET OVERTURN COST (TOC)