

### CATCHMENTS

#### CATCHMENT #3 - WAIKANAE

- AREA 17 = 1.3 Ha
- AREA 18 = 0.9 Ha
- AREA 19 = 1.2 Ha
- AREA 20 = 0.1 Ha
- AREA 21 = 0.4 Ha

#### CATCHMENT #4 - NGARARA

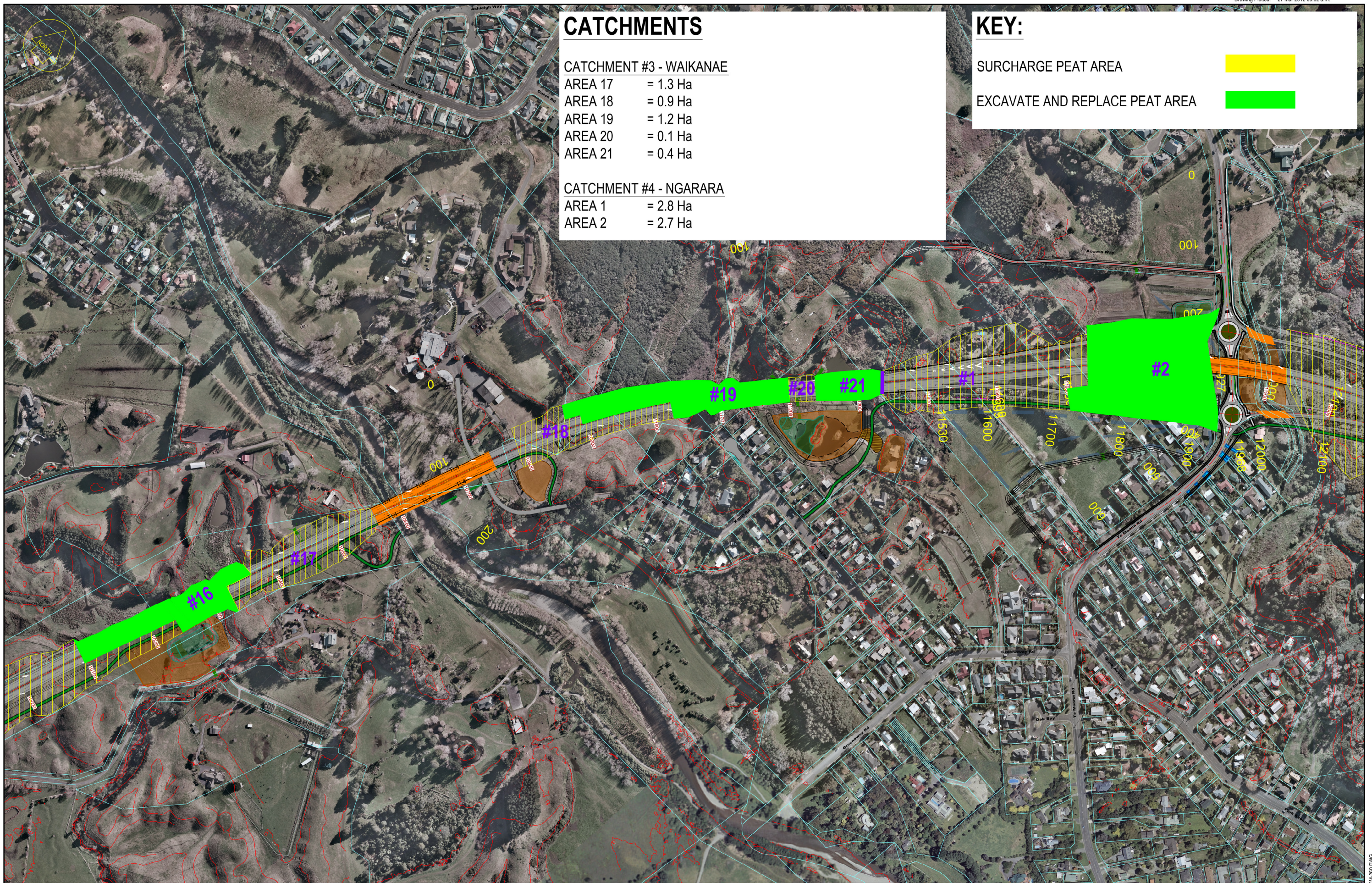
- AREA 1 = 2.8 Ha
- AREA 2 = 2.7 Ha

### KEY:

SURCHARGE PEAT AREA



EXCAVATE AND REPLACE PEAT AREA



NOTES:

Original Scale (A3)  
1:5000

1	AEE LODGEMENT	GJR	15.03.12
Revision	Amendment	Approved	Date



### MACKAYS TO PEKA PEKA EXPRESSWAY

Title: EROSION & SEDIMENT CONTROL  
CHAINAGES 10000 TO 12100  
USLE CATCHMENTS

Status:	-
Document ID:	M2PP-AEE-DWG
Drawing No:	CV-CM-266
Rev:	1

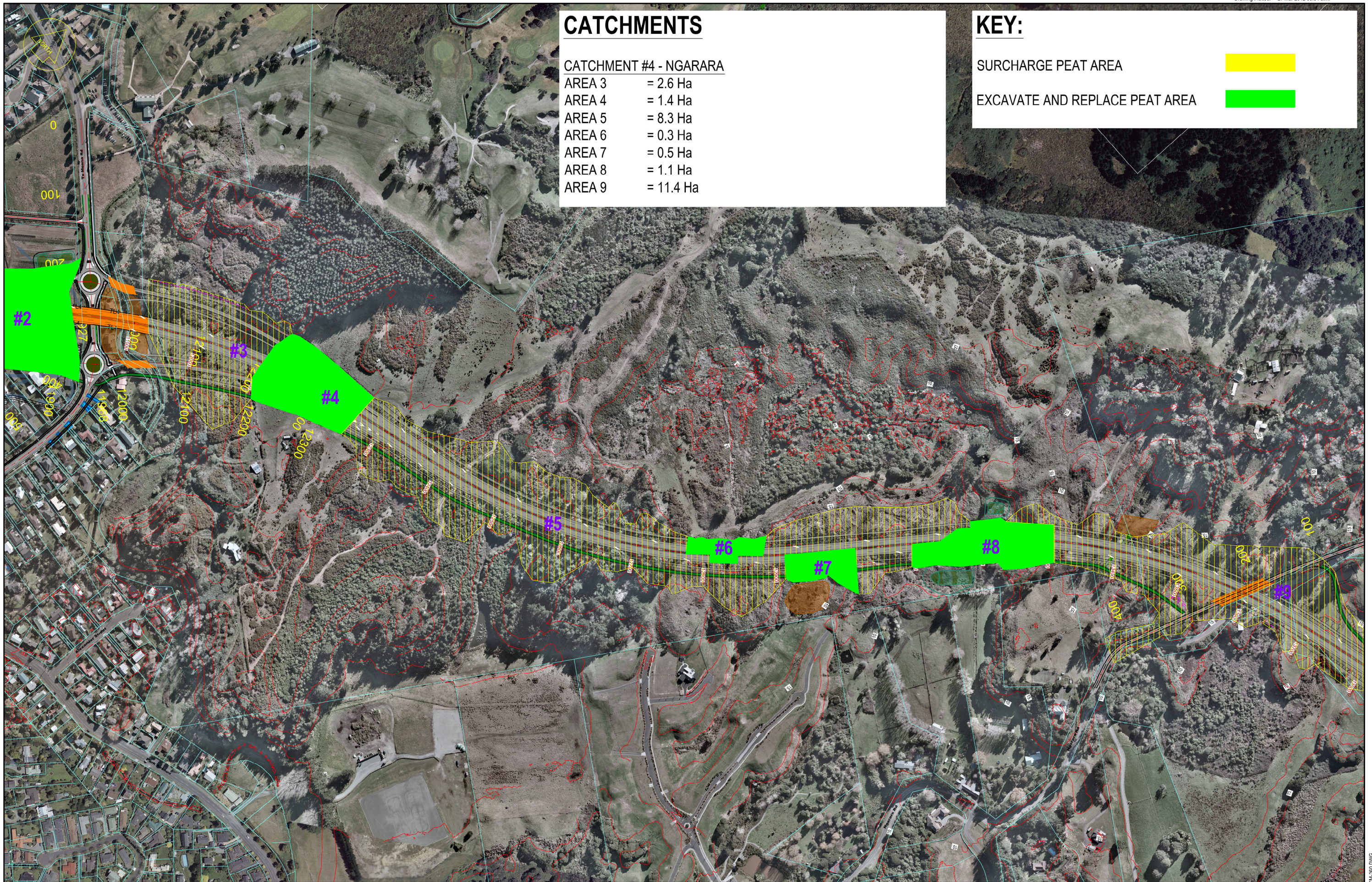
# CATCHMENTS

## CATCHMENT #4 - NGARARA

- AREA 3 = 2.6 Ha
- AREA 4 = 1.4 Ha
- AREA 5 = 8.3 Ha
- AREA 6 = 0.3 Ha
- AREA 7 = 0.5 Ha
- AREA 8 = 1.1 Ha
- AREA 9 = 11.4 Ha

# KEY:

- SURCHARGE PEAT AREA
- EXCAVATE AND REPLACE PEAT AREA



NOTES:

Original Scale (A3)	1:5000
---------------------	--------

1	AEE LODGEMENT	GJR	15.03.12
Revision	Amendment	Approved	Date



Project: <b>MACKAYS TO PEKA PEKA EXPRESSWAY</b>	
Title: <b>EROSION &amp; SEDIMENT CONTROL CHAINAGES 11900 TO 13800 USLE CATCHMENTS</b>	
Status: -	Rev. -
Document ID: M2PP-AEE-DWG	Drawing No: <b>CV-CM-267</b>
	1

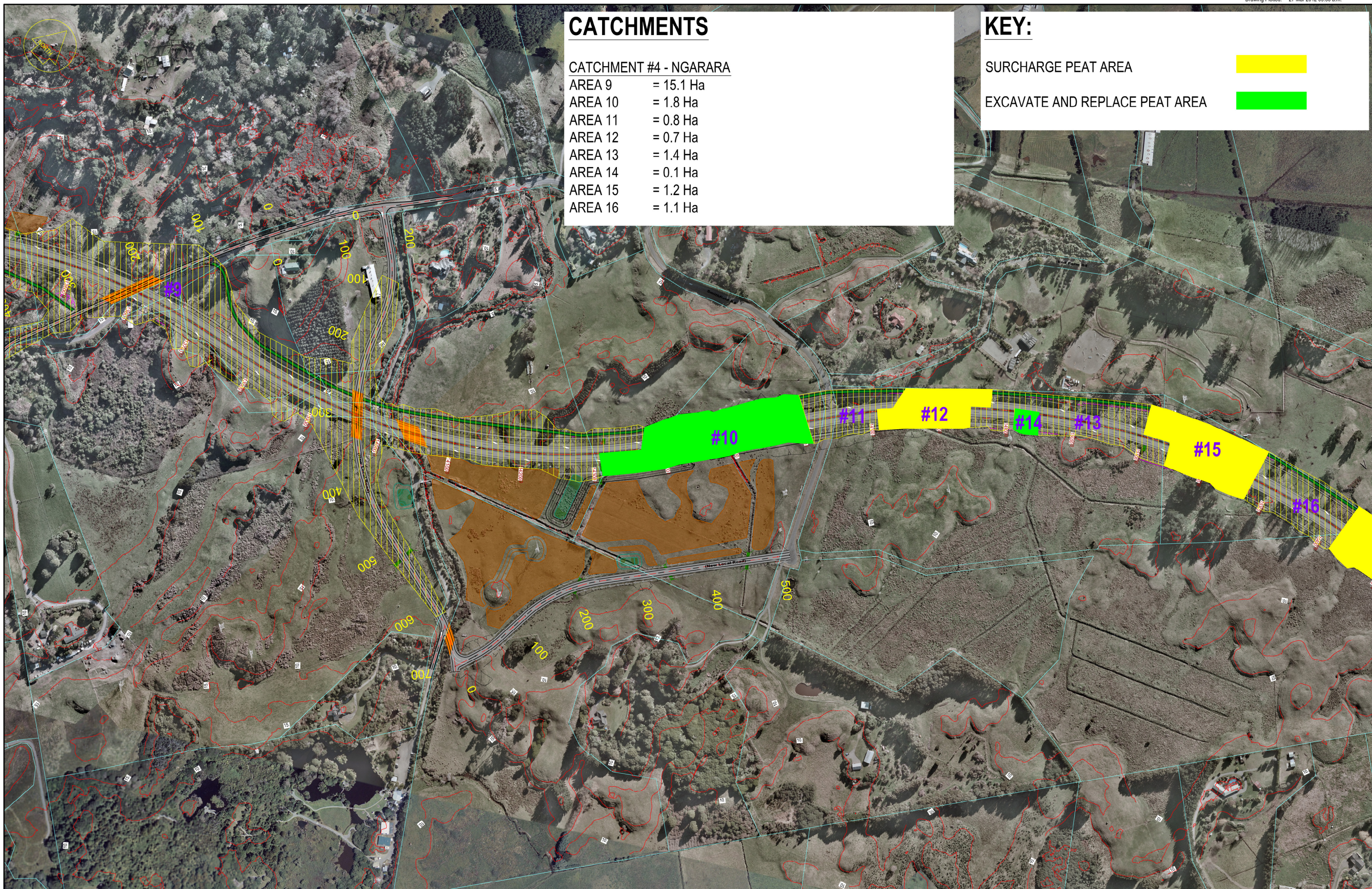
# CATCHMENTS

## CATCHMENT #4 - NGARARA

- AREA 9 = 15.1 Ha
- AREA 10 = 1.8 Ha
- AREA 11 = 0.8 Ha
- AREA 12 = 0.7 Ha
- AREA 13 = 1.4 Ha
- AREA 14 = 0.1 Ha
- AREA 15 = 1.2 Ha
- AREA 16 = 1.1 Ha

# KEY:

- SURCHARGE PEAT AREA
- EXCAVATE AND REPLACE PEAT AREA



NOTES:

Original Scale (A3)  
1:5000

1	AEE LODGEMENT	GJR	15.03.12
Revision:	Amendment:	Approved:	Date:



## MACKAYS TO PEKA PEKA EXPRESSWAY

Project: EROSION & SEDIMENT CONTROL  
CHAINAGES 13400 TO 15500  
USLE CATCHMENTS

Status:	-
Document ID:	M2PP-AEE-DWG
Drawing No:	CV-CM-268
Rev:	1