

NOTE: REFERENCE NEEDS TO BE MADE TO DRAWING NUMBERS CV-SW-395 AND 396

STEP 1: CONSTRUCT CROSSHEADS AND THEN CONSTRUCT MSE ABUTMENT UP TO UNDERSIDE OF SETTLEMENT SLAB. ANY DISCHARGE CAN BE PUMPED DECANTING EARTH BUND.

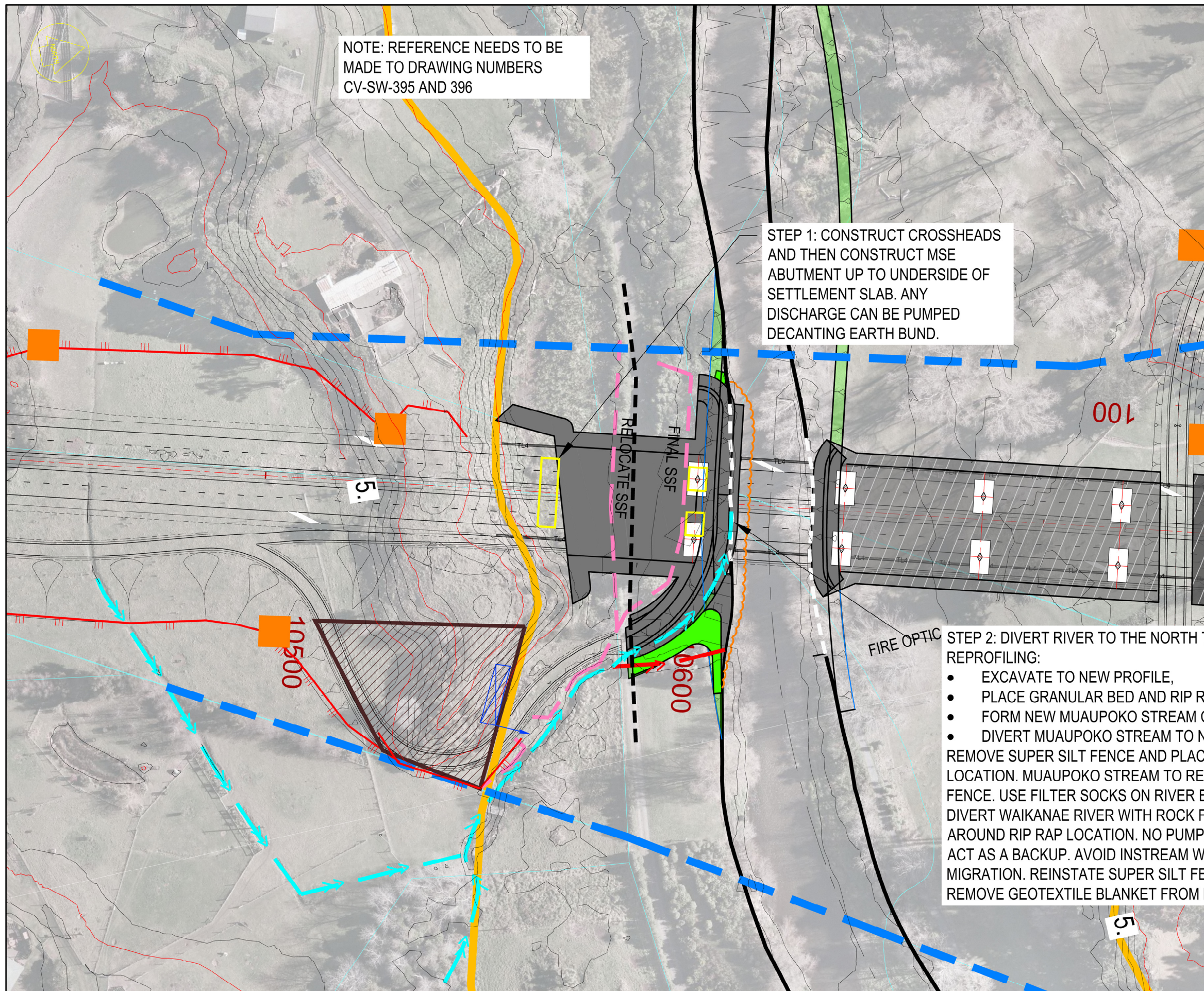
STEP 2: DIVERT RIVER TO THE NORTH TO ENABLE RIVER BACK REPROFILING:

- EXCAVATE TO NEW PROFILE,
- PLACE GRANULAR BED AND RIP RAP,
- FORM NEW MUAUPOKO STREAM CHANNEL PROFILE,
- DIVERT MUAUPOKO STREAM TO NEW CHANNEL ONCE STABILISED.

REMOVE SUPER SILT FENCE AND PLACE BELOW GROUND IMPROVEMENT LOCATION. MUAUPOKO STREAM TO REMAIN PROTECTED BY SUPER SILT FENCE. USE FILTER SOCKS ON RIVER EDGE ON DAILY BASIS AS REQUIRED. DIVERT WAIKANAE RIVER WITH ROCK FILLED GEOTEXTILE BLANKET AROUND RIP RAP LOCATION. NO PUMPING BUT DECANTING EARTH BUND TO ACT AS A BACKUP. AVOID INSTREAM WORKS DURING FISH SPAWNING AND MIGRATION. REINSTATE SUPER SILT FENCE ONCE STAGE IS COMPLETED. REMOVE GEOTEXTILE BLANKET FROM RIVER.

KEY:

- 1% AEP RIVER CORRIDOR —
- RIVER BANK WORKS —
- CURRENT WAIKANAE RIVER BANK —
- MUAUPOKO STREAM AND TEMP ALIGNMENT —
- MUAUPOKO STREAM OLD ALIGNMENT —
- TOPSOIL BUND —
- ROCK FILTERS ■
- CYCLEWAY —
- SUPER SILT FENCE —
- DESIGNATION BOUNDARY - - -
- ORIGINAL WAIKANAE RIVER BANK TOE TO BE RELOCATED —
- DECANTING EARTH BUND ■
- DIVERSION BUND —
- ROCK RIP RAP —
- STREAM DIVERSION WITH ROCK FILLED GEOTEXTILE BLANKET —
- GRANULAR FILL —
- PEDESTRIAN ACCESS - - -



NOTES:

Original Scale (A3)	1:1000
---------------------	--------

1	AEE LODGEMENT	GJR	15.03.12
Revision:	Amendment:	Approved:	Date:



Project: MACKAYS TO PEKA PEKA EXPRESSWAY

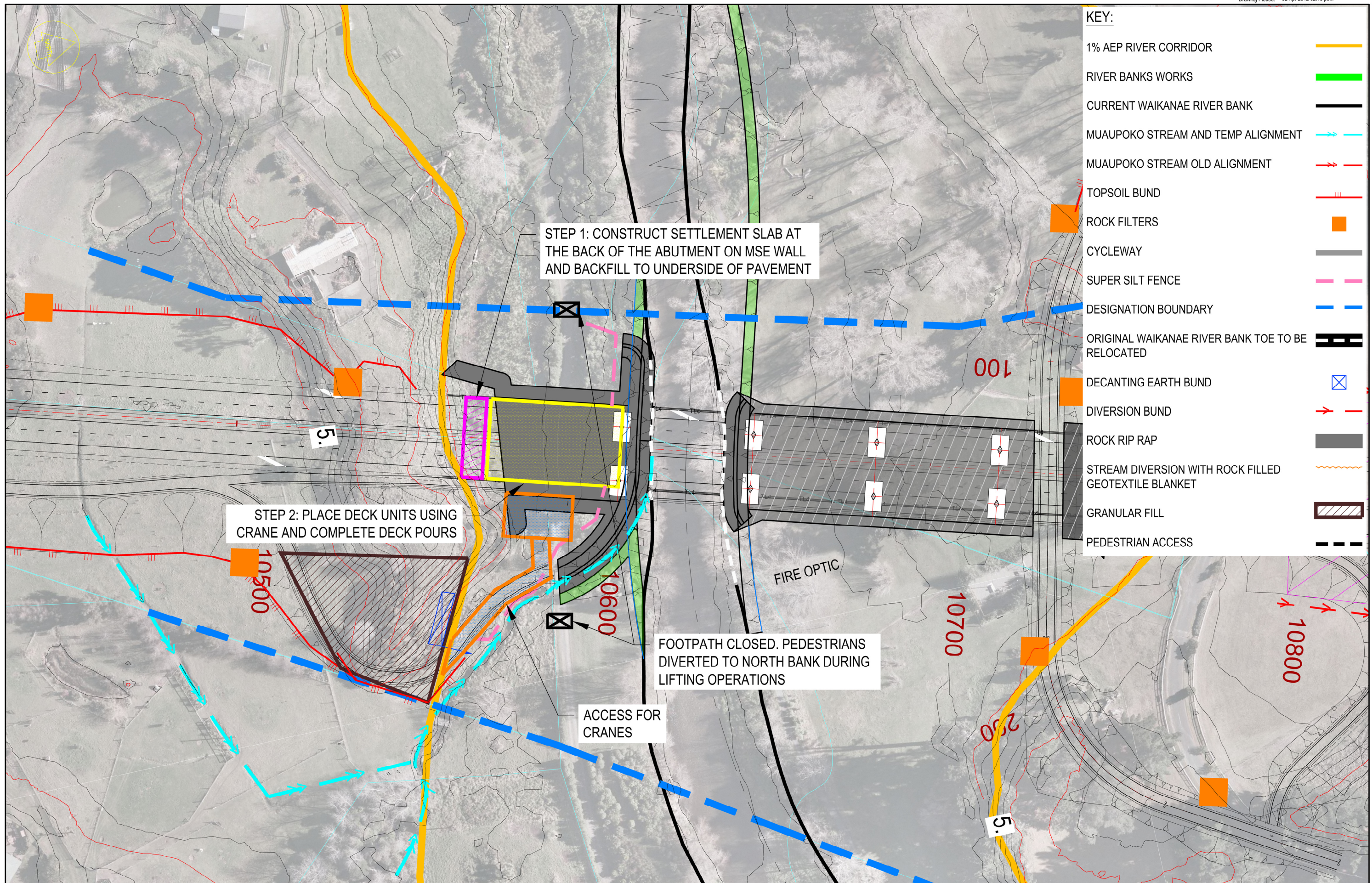
Title: WAIKANAE RIVER BRIDGE & STREAMWORKS SEQUENCING OF WOKS & ENVIRONMENTAL STAGE 5

Status: FOR CONSENTING

Document ID: M2PP-AEE-DWG

Drawing No: CV-CM-505

Rev: 1



- KEY:**
- 1% AEP RIVER CORRIDOR —
 - RIVER BANKS WORKS —
 - CURRENT WAIKANAЕ RIVER BANK —
 - MUAUPOKO STREAM AND TEMP ALIGNMENT —
 - MUAUPOKO STREAM OLD ALIGNMENT —
 - TOPSOIL BUND ■
 - ROCK FILTERS ■
 - CYCLEWAY —
 - SUPER SILT FENCE - - -
 - DESIGNATION BOUNDARY - - -
 - ORIGINAL WAIKANAЕ RIVER BANK TOE TO BE RELOCATED —
 - DECANTING EARTH BUND ■
 - DIVERSION BUND —
 - ROCK RIP RAP —
 - STREAM DIVERSION WITH ROCK FILLED GEOTEXTILE BLANKET —
 - GRANULAR FILL —
 - PEDESTRIAN ACCESS - - -

STEP 1: CONSTRUCT SETTLEMENT SLAB AT THE BACK OF THE ABUTMENT ON MSE WALL AND BACKFILL TO UNDERSIDE OF PAVEMENT

STEP 2: PLACE DECK UNITS USING CRANE AND COMPLETE DECK POURS

FOOTPATH CLOSED. PEDESTRIANS DIVERTED TO NORTH BANK DURING LIFTING OPERATIONS

ACCESS FOR CRANES

FIRE OPTIC

NOTES:

Original Scale (A3)	
1:1000	

1	AEE LODGEMENT	GJR	15.03.12
Revision	Amendment	Approved	Date



Project: MACKAYS TO PEKA PEKA EXPRESSWAY

Title: WAIKANAЕ RIVER BRIDGE & STREAMWORKS SEQUENCING OF WOKS & ENVIRONMENTAL STAGE 6

Status: FOR CONSENTING

Document ID: M2PP-AEE-DWG

Drawing No: CV-CM-506

Rev: 1

STEP 5: PROGRESSIVELY REALIGN RIVER BANK DIVERTING RIVER SOUTH AT EACH STAGE. DIVERT WITH SAME METHODOLOGY AS PER STAGE 5 STEP 2. REFER TO 7.10 OF ESCP.

STEP 4: DIVERT RIVER TO SOUTH TO ENABLE RIVER BANK REPROFILING:

- EXCAVATE TO NEW PROFILE
- PLACE GRANULAR BED AND RIP RAP
- REALIGN FOOTPATH

REFER TO STAGE 5 STEP 2 METHODOLOGY AND SECTION 7.10 OF ESCP. STREAM DIVERSION TO MOVE WITH RIVER WORKS.

STEP 2: PLACE FLOODPLAIN SCOUR PROTECTION AND USE AS ACCESS ROAD

STEP 1: FORM YARD AREA AND PREPARE GROUND IMPROVEMENT BLOCK (50m BY 44m) AND INSTALL STONE COLUMNS.

STEP 3: CONSTRUCT REMAINING PIERS AND CROSSHEADS AS PER STAGES 2 TO 5 ANY DEWATERING OR PUMPING TO DECANTING EARTH BUND IN NORTHERN REFUGE AREA OR TO FLOOD STORAGE AREA AT LOCATION 10850

SAFE ACCESS FOR PEDESTRIANS MAINTAINED ON FOOTPATH. TEMPORARY REALIGNMENT DURING PILING/PIER CONSTRUCTION. TEMPORARY DIVERSION TO SOUTH BANK DURING BEAM LIFTING OPERATION

KEY:

- 1% AEP RIVER CORRIDOR
- RIVER BANK WORKS
- CURRENT WAIKANAE RIVER BANK
- MUAUPOKO STREAM AND TEMP ALIGNMENT
- MUAUPOKO STREAM OLD ALIGNMENT
- TOPSOIL BUND
- ROCK FILTERS
- CYCLEWAY
- SUPER SILT FENCE
- DESIGNATION BOUNDARY
- ORIGINAL WAIKANAE RIVER BANK TOE TO BE RELOCATED
- DECANTING EARTH BUND
- DIVERSION BUND
- ROCK RIP RAP
- STREAM DIVERSION WITH ROCK FILLED GEOTEXTILE BLANKET
- GRANULAR FILL
- PEDESTRIAN ACCESS

NOTES:

Original Scale (A3)	1:1000
---------------------	--------

1	AEE LODGEMENT	GJR	15.03.12
Revision	Amendment	Approved	Date



MACKAYS TO PEKA PEKA EXPRESSWAY

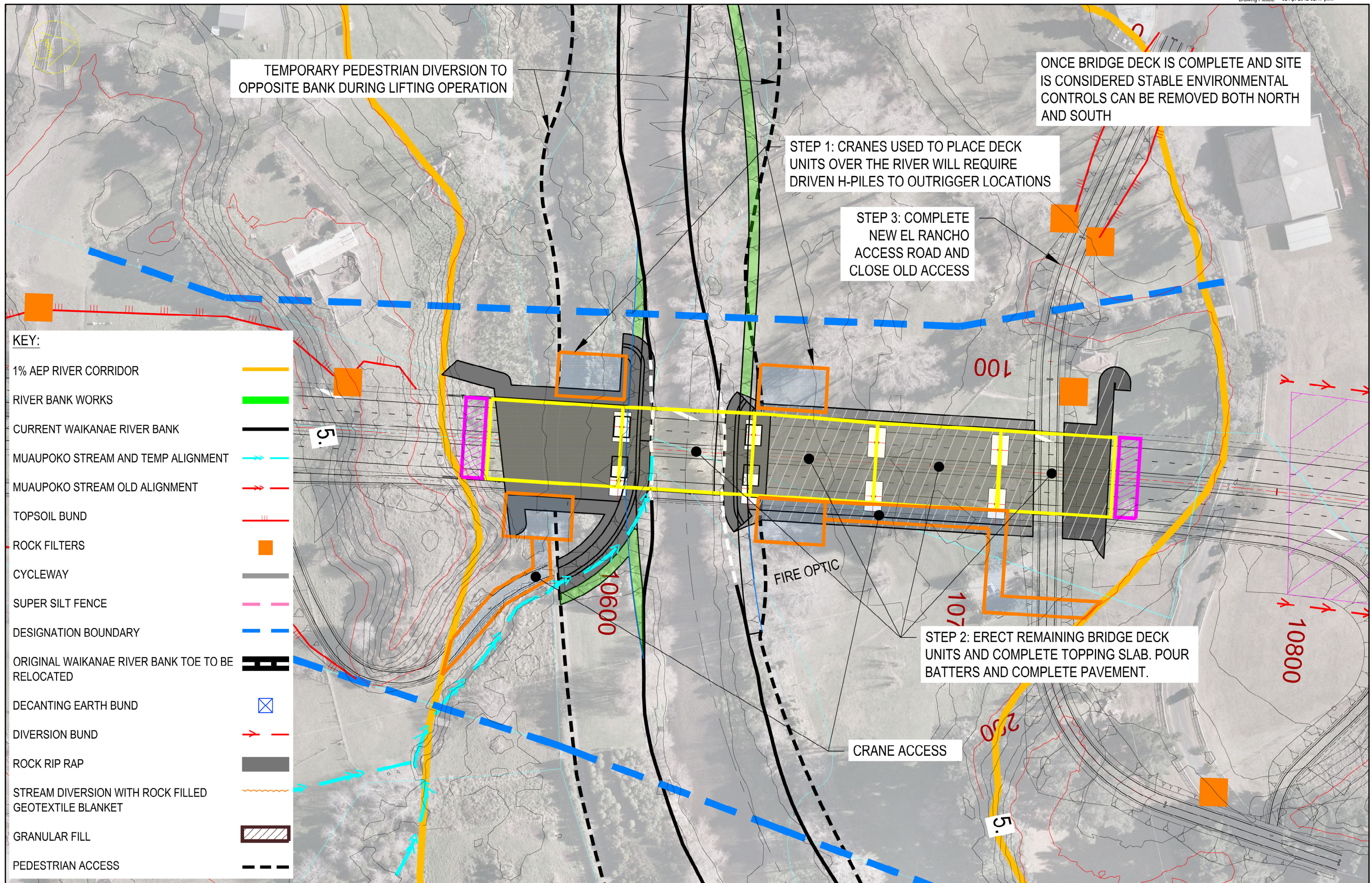
Project: WAIKANAE RIVER BRIDGE & STREAMWORKS SEQUENCING OF WOKS & ENVIRONMENTAL STAGE 7

Status: FOR CONSENTING

Document ID: M2PP-AEE-DWG

Drawing No: CV-CM-507

Rev: 1



TEMPORARY PEDESTRIAN DIVERSION TO OPPOSITE BANK DURING LIFTING OPERATION

ONCE BRIDGE DECK IS COMPLETE AND SITE IS CONSIDERED STABLE ENVIRONMENTAL CONTROLS CAN BE REMOVED BOTH NORTH AND SOUTH

STEP 1: CRANES USED TO PLACE DECK UNITS OVER THE RIVER WILL REQUIRE DRIVEN H-PILES TO OUTRIGGER LOCATIONS

STEP 3: COMPLETE NEW EL RANCHO ACCESS ROAD AND CLOSE OLD ACCESS

STEP 2: ERECT REMAINING BRIDGE DECK UNITS AND COMPLETE TOPPING SLAB. POUR BATTERS AND COMPLETE PAVEMENT.

- KEY:**
- 1% AEP RIVER CORRIDOR —
 - RIVER BANK WORKS —
 - CURRENT WAIKANAE RIVER BANK —
 - MUAUPOKO STREAM AND TEMP ALIGNMENT —
 - MUAUPOKO STREAM OLD ALIGNMENT —
 - TOPSOIL BUND —
 - ROCK FILTERS ■
 - CYCLEWAY —
 - SUPER SILT FENCE —
 - DESIGNATION BOUNDARY —
 - ORIGINAL WAIKANAE RIVER BANK TOE TO BE RELOCATED —
 - DECANTING EARTH BUND ⊗
 - DIVERSION BUND —
 - ROCK RIP RAP ■
 - STREAM DIVERSION WITH ROCK FILLED GEOTEXTILE BLANKET —
 - GRANULAR FILL ▨
 - PEDESTRIAN ACCESS - - -

NOTES:

Original Scale (A3)		1:1000	
1	AEE LODGEMENT	GJR	15.03.12
Revision	Amendment	Approved	Date



Project: MACKAYS TO PEKA PEKA EXPRESSWAY	
Title: WAIKANAE RIVER BRIDGE & STREAMWORKS SEQUENCING OF WOKS & ENVIRONMENTAL STAGE 8	
Status: FOR CONSENTING	Rev. 1
Document ID: M2PP-AEE-DWG	Drawing No: CV-CM-508