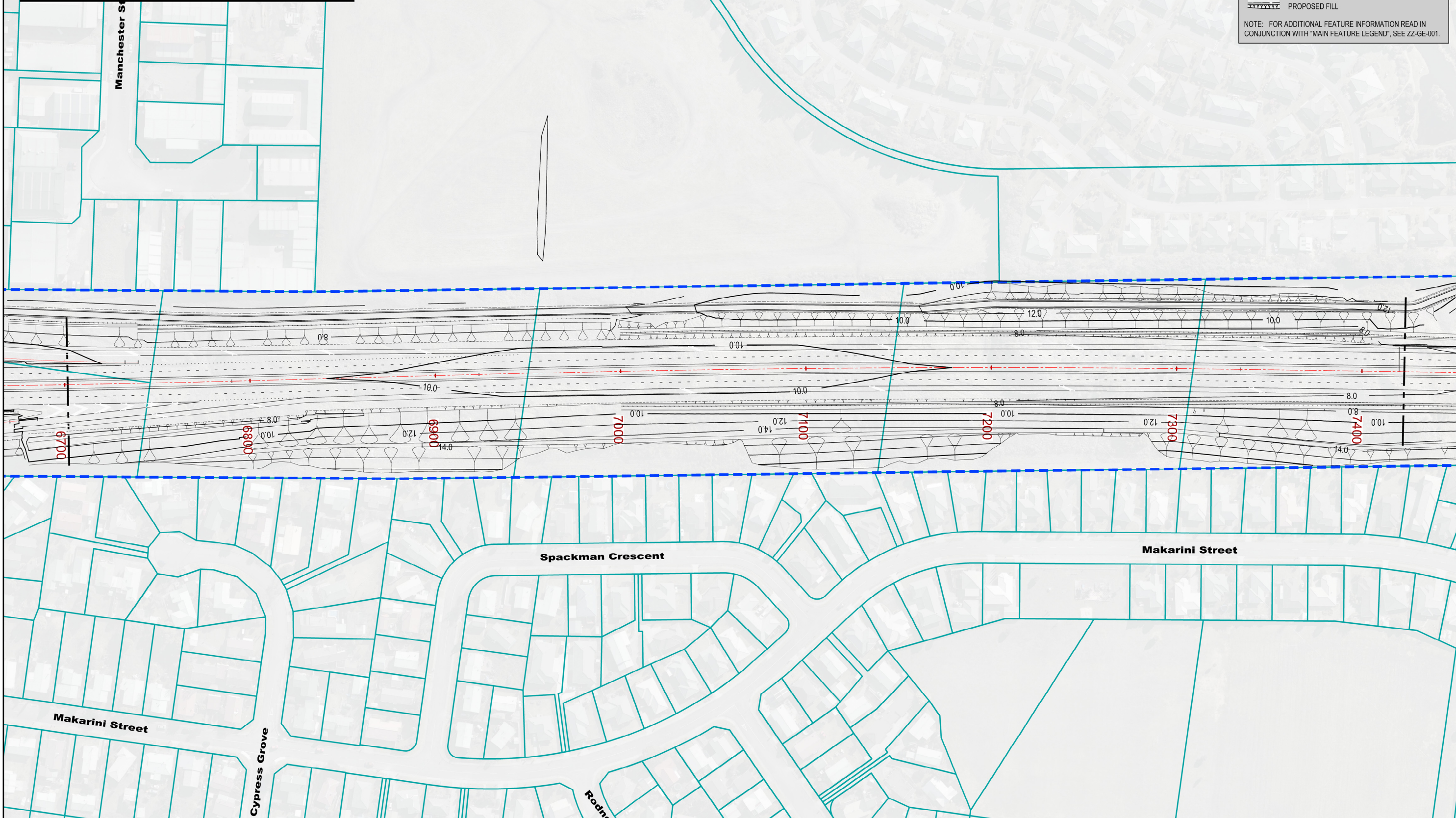




LEGEND: SCHEME PLANS
CUT & FILL CONTOUR PLANS (CV-SP)

- PROPOSED DESIGNATION
- SHARED CYCLE / WALKWAY
- PROPOSED RETAINING WALLS / BRIDGES
- PROPOSED CUT
- PROPOSED FILL

NOTE: FOR ADDITIONAL FEATURE INFORMATION READ IN CONJUNCTION WITH "MAIN FEATURE LEGEND", SEE ZZ-GE-001.



NOTES:

Original Scale (A3)			
1:2000			
1	AEE LODGEMENT	NRN	15.03.12
Revision:	Amendment	Approved:	Date



Project: **MACKAYS TO PEKA PEKA EXPRESSWAY**

Title: **PROPOSED EXPRESSWAY
PROPOSED CONTOUR PLAN
SHEET 13 OF 37**

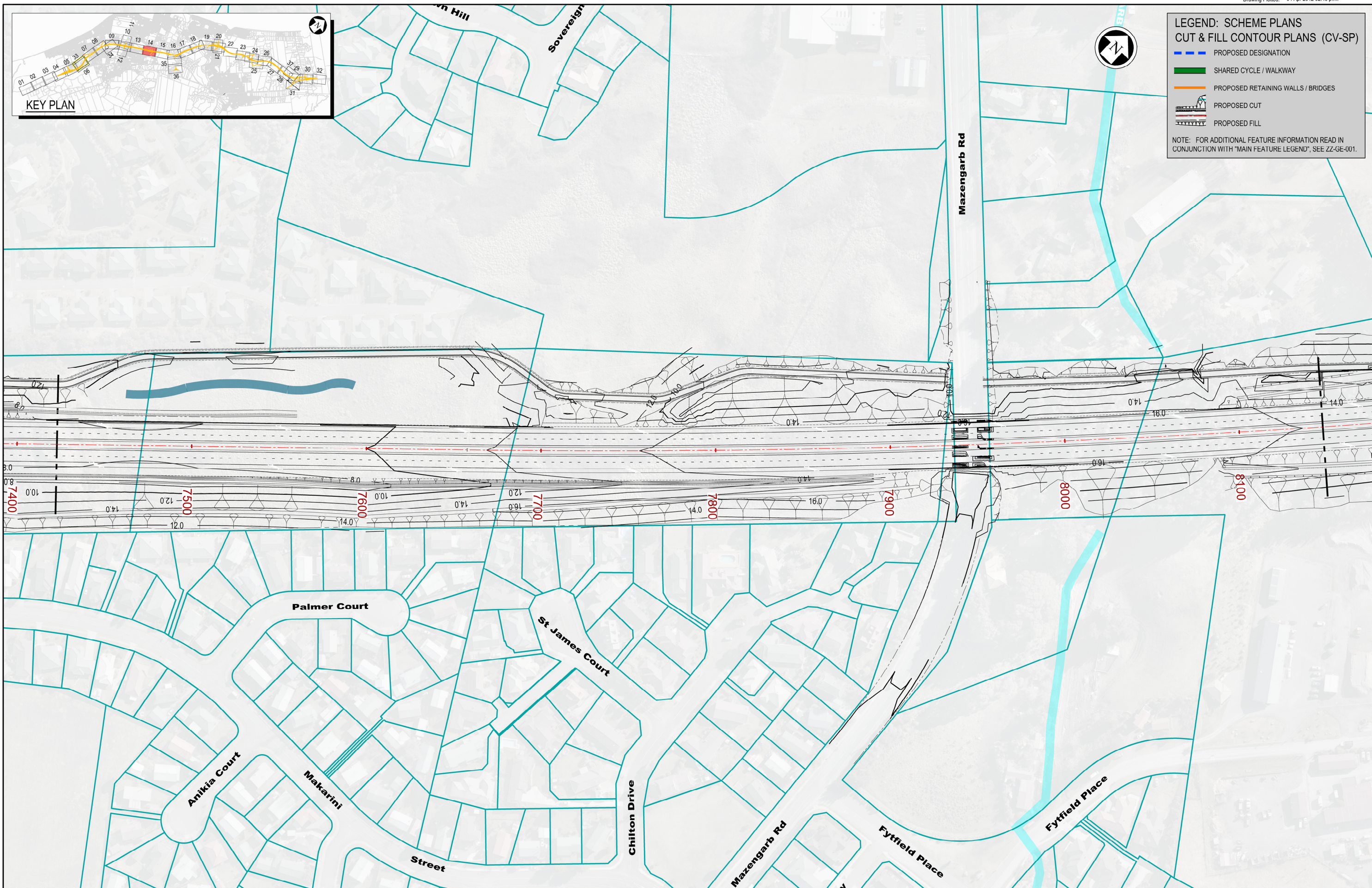
Status:	FOR CONSENTING
Document ID:	M2PP-AEE-DWG
Drawing No:	CV-EW-213
Rev:	1



LEGEND: SCHEME PLANS
CUT & FILL CONTOUR PLANS (CV-SP)

- PROPOSED DESIGNATION
- SHARED CYCLE / WALKWAY
- PROPOSED RETAINING WALLS / BRIDGES
- PROPOSED CUT
- PROPOSED FILL

NOTE: FOR ADDITIONAL FEATURE INFORMATION READ IN CONJUNCTION WITH "MAIN FEATURE LEGEND", SEE ZZ-GE-001.



NOTES:

Original Scale (A3)
 1:2000

Revision	Description	NRN	Date
1	AEE LODGEMENT	NRN	15.03.12
	Amendment	Approved	Date



MACKAYS TO PEKA PEKA EXPRESSWAY

PROPOSED EXPRESSWAY
 PROPOSED CONTOUR PLAN
 SHEET 14 OF 37



Status: FOR CONSENTING

Document ID: M2PP-AEE-DWG Rev. 1

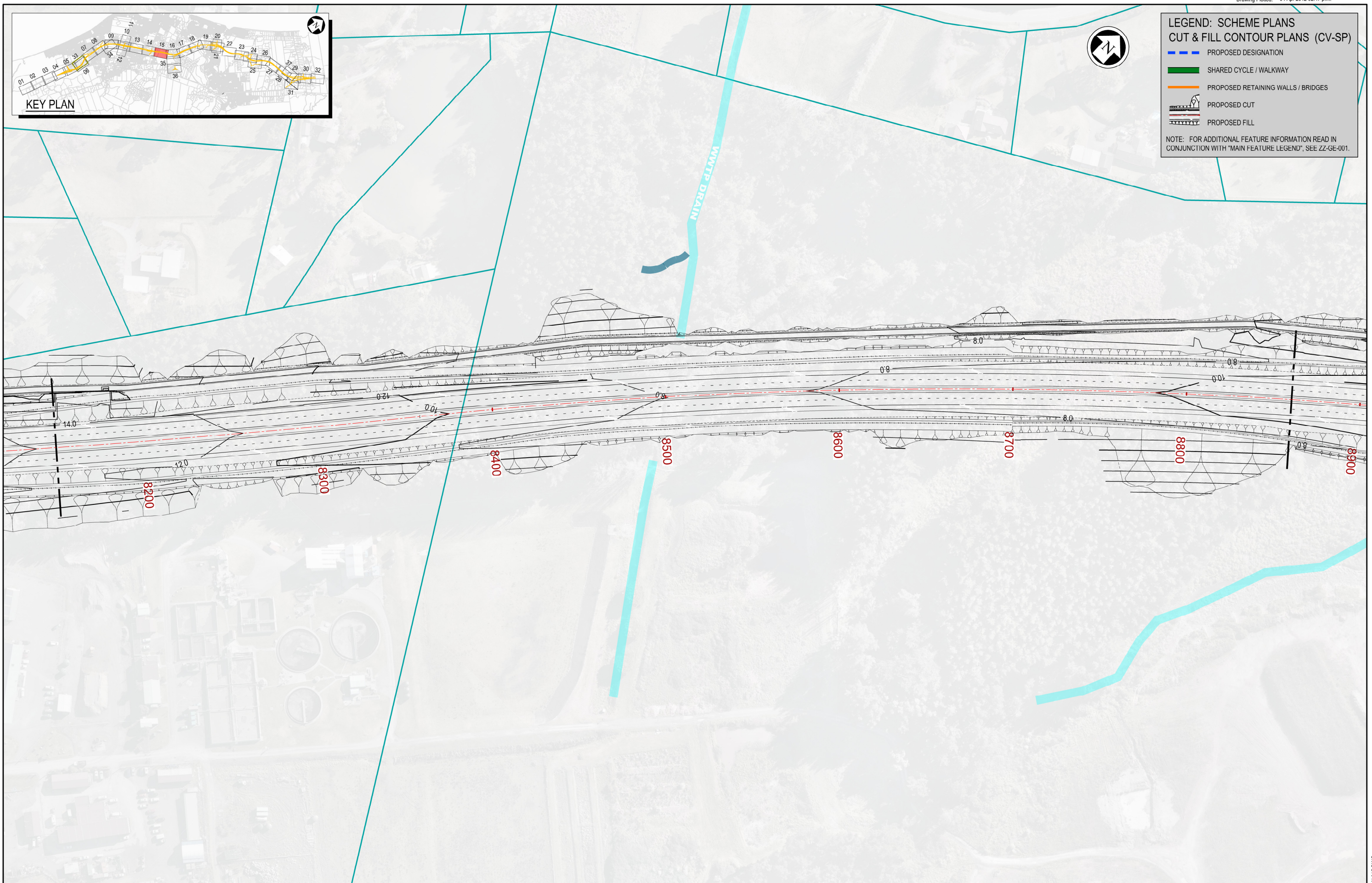
Drawing No: CV-EW-214



LEGEND: SCHEME PLANS
CUT & FILL CONTOUR PLANS (CV-SP)

- PROPOSED DESIGNATION
- SHARED CYCLE / WALKWAY
- PROPOSED RETAINING WALLS / BRIDGES
-  PROPOSED CUT
-  PROPOSED FILL

NOTE: FOR ADDITIONAL FEATURE INFORMATION READ IN CONJUNCTION WITH "MAIN FEATURE LEGEND", SEE ZZ-GE-001.



NOTES:

Original Scale (A3)			
1:2000			
1	AEE LODGEMENT	NRN	15.03.12
Revision:	Amendment	Approved:	Date:



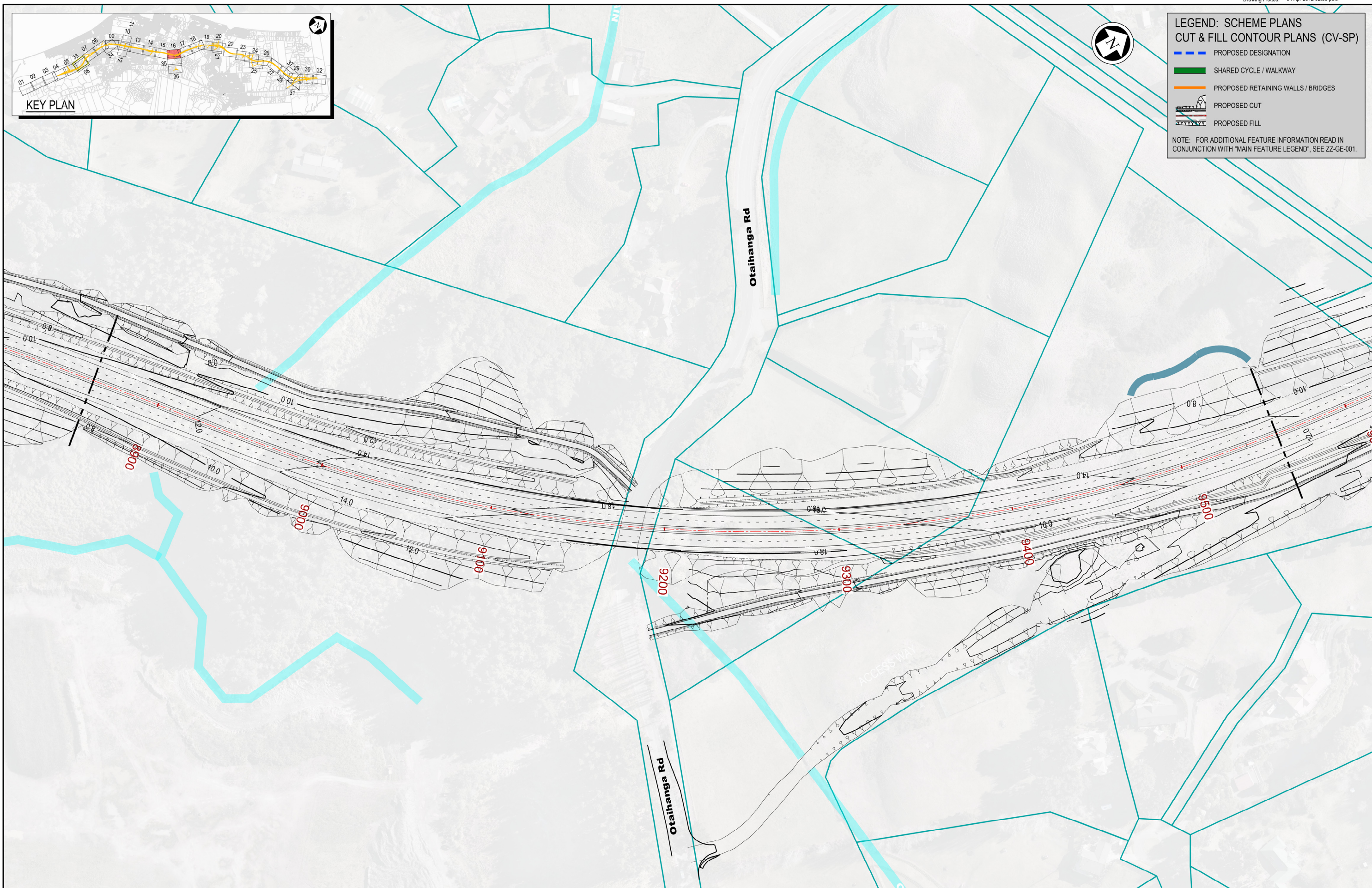
Project: MACKAYS TO PEKA PEKA EXPRESSWAY	
Title: PROPOSED EXPRESSWAY PROPOSED CONTOUR PLAN SHEET 15 OF 37	
Status: FOR CONSENTING	Rev.
Document ID: M2PP-AEE-DWG	1
Drawing No: CV-EW-215	



LEGEND: SCHEME PLANS
CUT & FILL CONTOUR PLANS (CV-SP)

- PROPOSED DESIGNATION
- SHARED CYCLE / WALKWAY
- PROPOSED RETAINING WALLS / BRIDGES
- PROPOSED CUT
- PROPOSED FILL

NOTE: FOR ADDITIONAL FEATURE INFORMATION READ IN CONJUNCTION WITH "MAIN FEATURE LEGEND", SEE ZZ-GE-001.



NOTES:

Original Scale (A3)			
1:2000			
1	AEE LODGEMENT	NRN	15.03.12
Revision:	Amendment	Approved:	Date:



Project: **MACKAYS TO PEKA PEKA EXPRESSWAY**

Title: **PROPOSED EXPRESSWAY
PROPOSED CONTOUR PLAN
SHEET 16 OF 37**

Status:	FOR CONSENTING
Document ID:	M2PP-AEE-DWG
Rev:	
Drawing No:	CV-EW-216
	1