

Initials: SW
Date: 18/8/2011
Calculation No: 1010

A3 Scale 1:5000
0 25 50 100 150 200 m

MARSHALL DAY
Acoustics

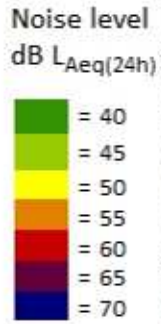
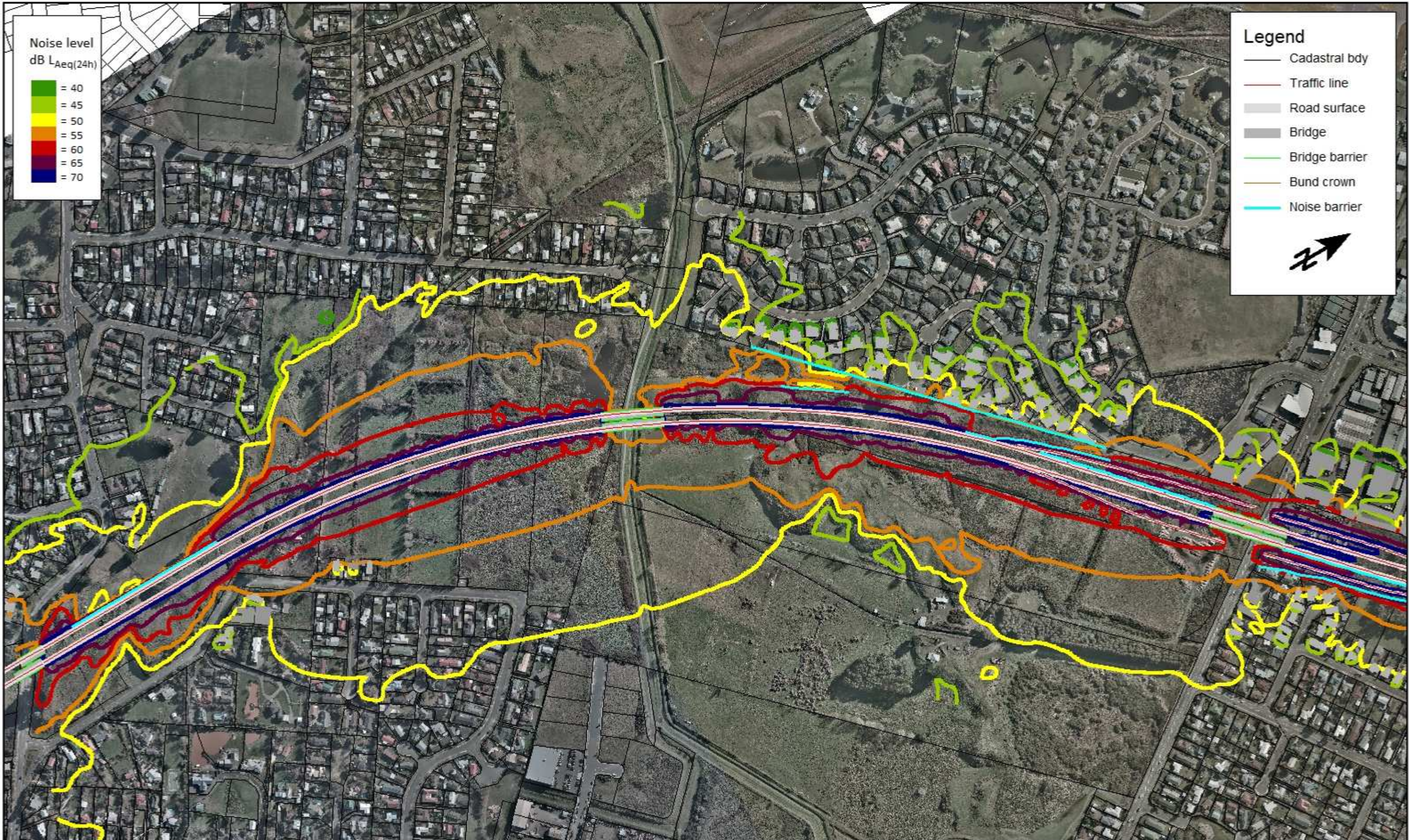
Mackays to Peka Peka

MACKAYS TO PEKA PEKA EXPRESSWAY
Sector 1
Preferred Mitigation Options

NOISE LEVEL
CONTOURS
SHEET 10 OF 18

Document Set:
M2PP-AEE-DWG

Drawing No.:
EN-NV-109



Legend

- Cadastral bdy
- Traffic line
- Road surface
- Bridge
- Bridge barrier
- Bund crown
- Noise barrier

Initials: SW
Date: 20/8/2011
Calculation No: 1020

A3 Scale 1:5000
0 25 50 100 150 200 m

MARSHALL DAY
Acoustics

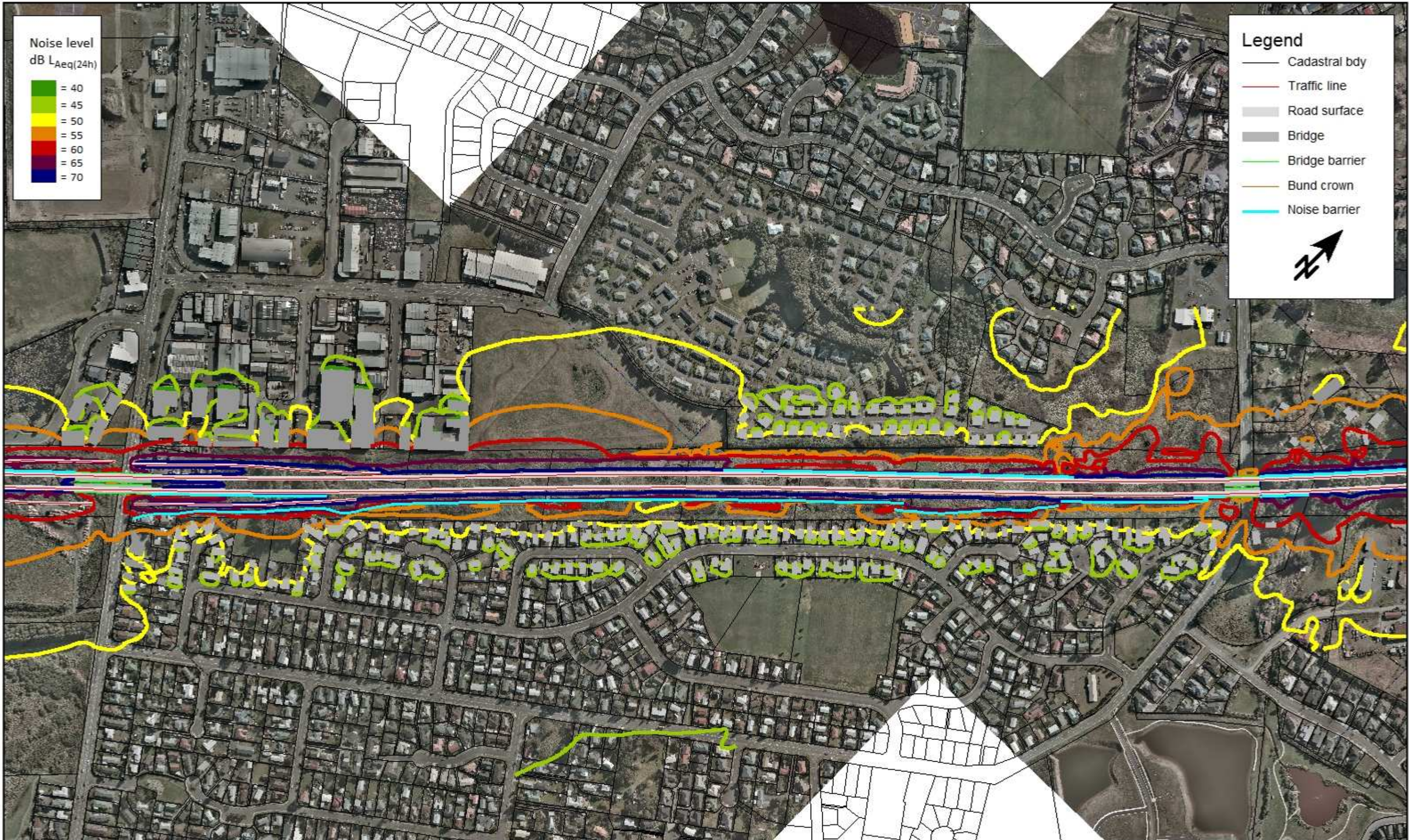
Mackays to Peka Peka

MACKAYS TO PEKA PEKA EXPRESSWAY
Sector 2
Preferred Mitigation Options

NOISE LEVEL
CONTOURS
SHEET 11 OF 18

Document Set:
M2PP-AEE-DWG

Drawing No.:
EN-NV-110



Initials: SW
Date: 20/8/2011
Calculation No: 1020

MARSHALL DAY
Acoustics

**MACKAYS TO PEKA PEKA EXPRESSWAY
Sector 2
Preferred Mitigation Option**

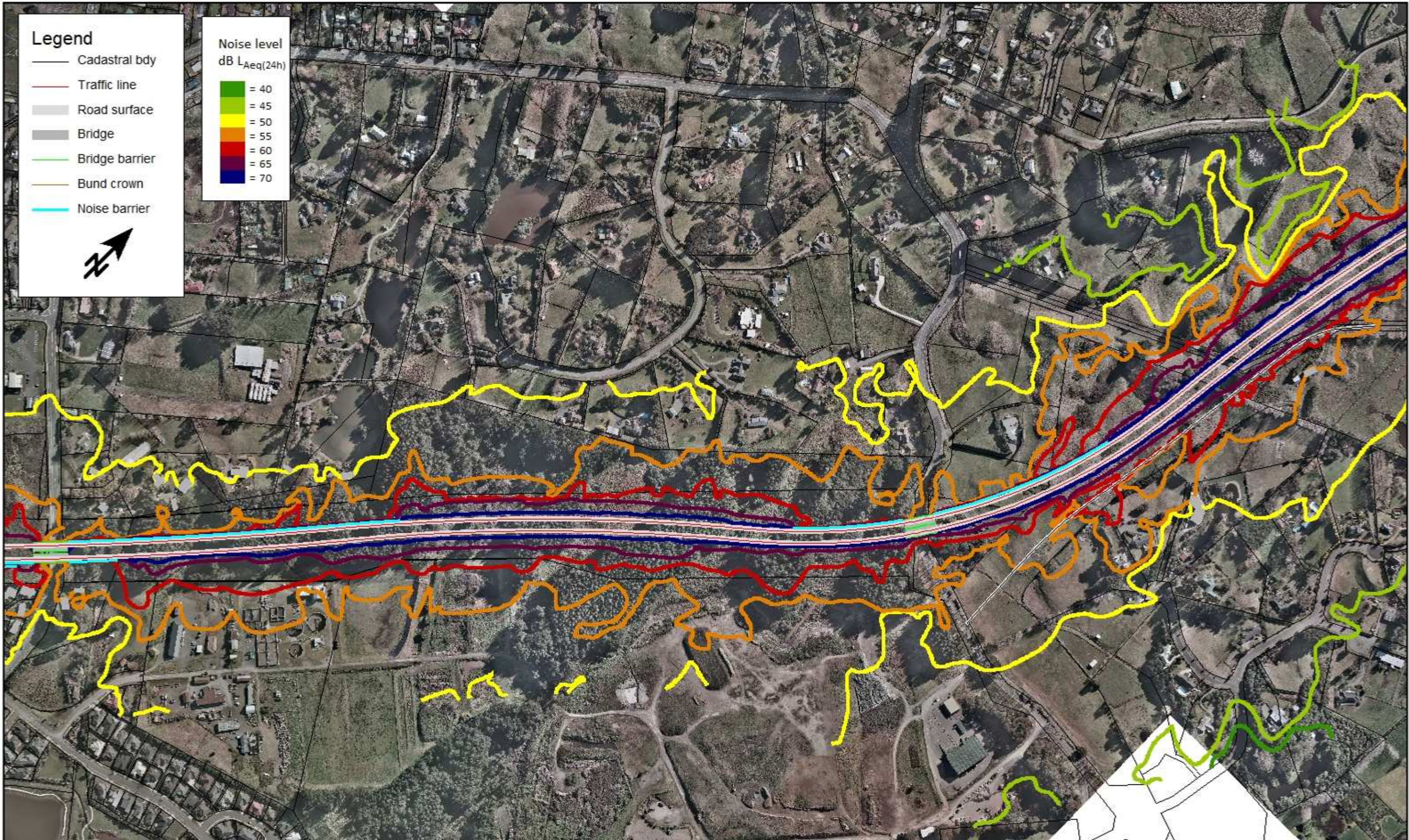
NOISE LEVEL
CONTOURS
SHEET 12 OF 18

Document Set:
M2PP-AEE-DWG

Drawing No.:
EN-NV-111

A3 Scale 1:5000
0 25 50 100 150 200 m

NEW ZEALAND TRANSPORT AGENCY
Mackays to Peka Peka



Initials: SW
 Date: 20/8/2011
 Calculation No: 1030

A3 Scale 1:5000
 0 25 50 100 150 200 m

MARSHALL DAY
 Acoustics

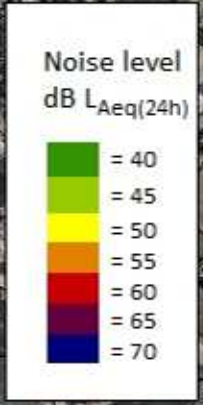
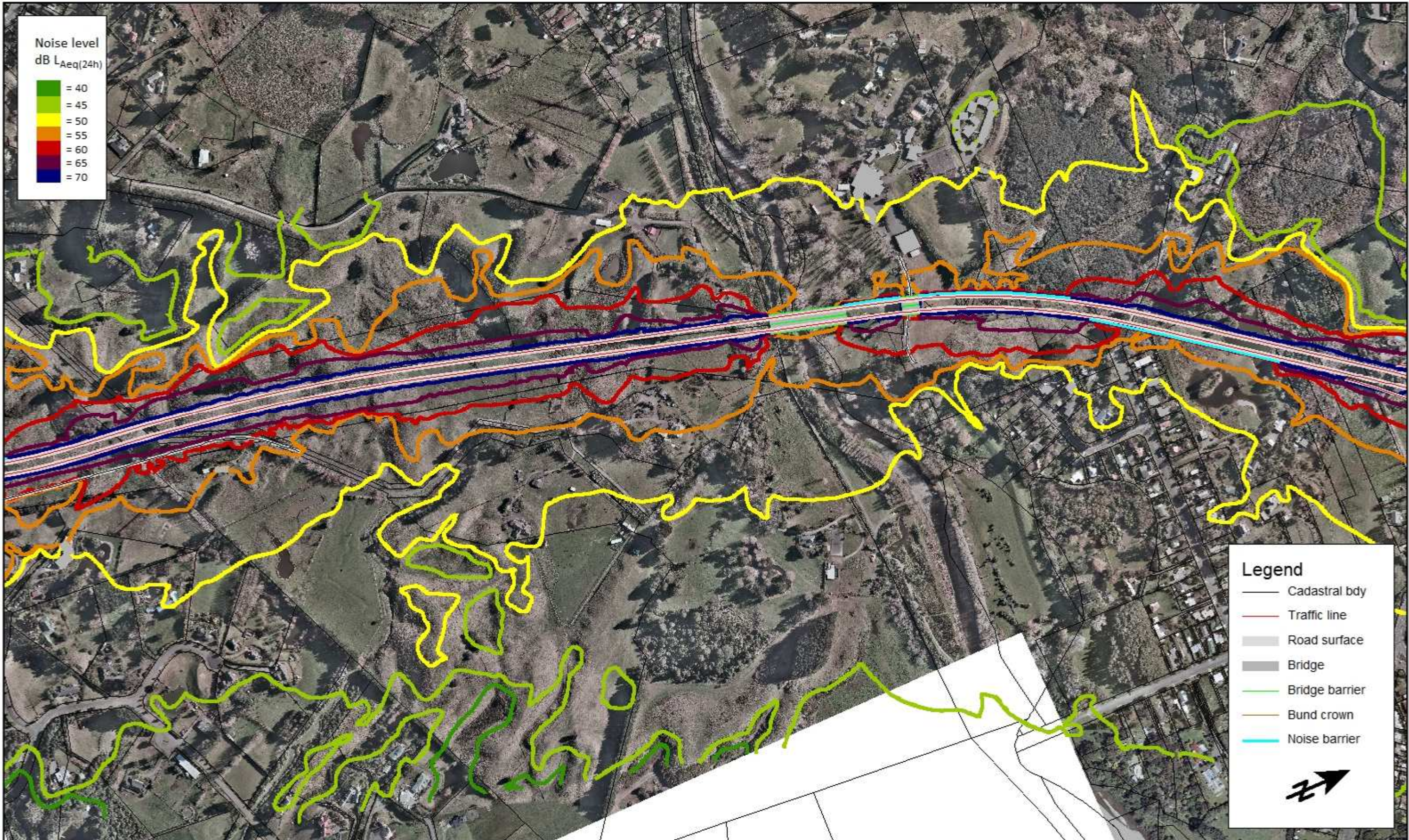
NETRANSPORT AGENCY
 Mackays to Peka Peka

MACKAYS TO PEKA PEKA EXPRESSWAY
Sector 3
Preferred Mitigation Options

NOISE LEVEL
 CONTOURS
 SHEET 13 OF 18

Document Set:
 M2PP-AEE-DWG

Drawing No.:
 EN-NV-112



Legend

- Cadastral bdy
- Traffic line
- Road surface
- Bridge
- Bridge barrier
- Bund crown
- Noise barrier

Initials: SW
Date: 20/8/2011
Calculation No: 1030

A3 Scale 1:5000

MARSHALL DAY
Acoustics

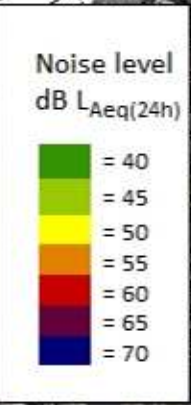
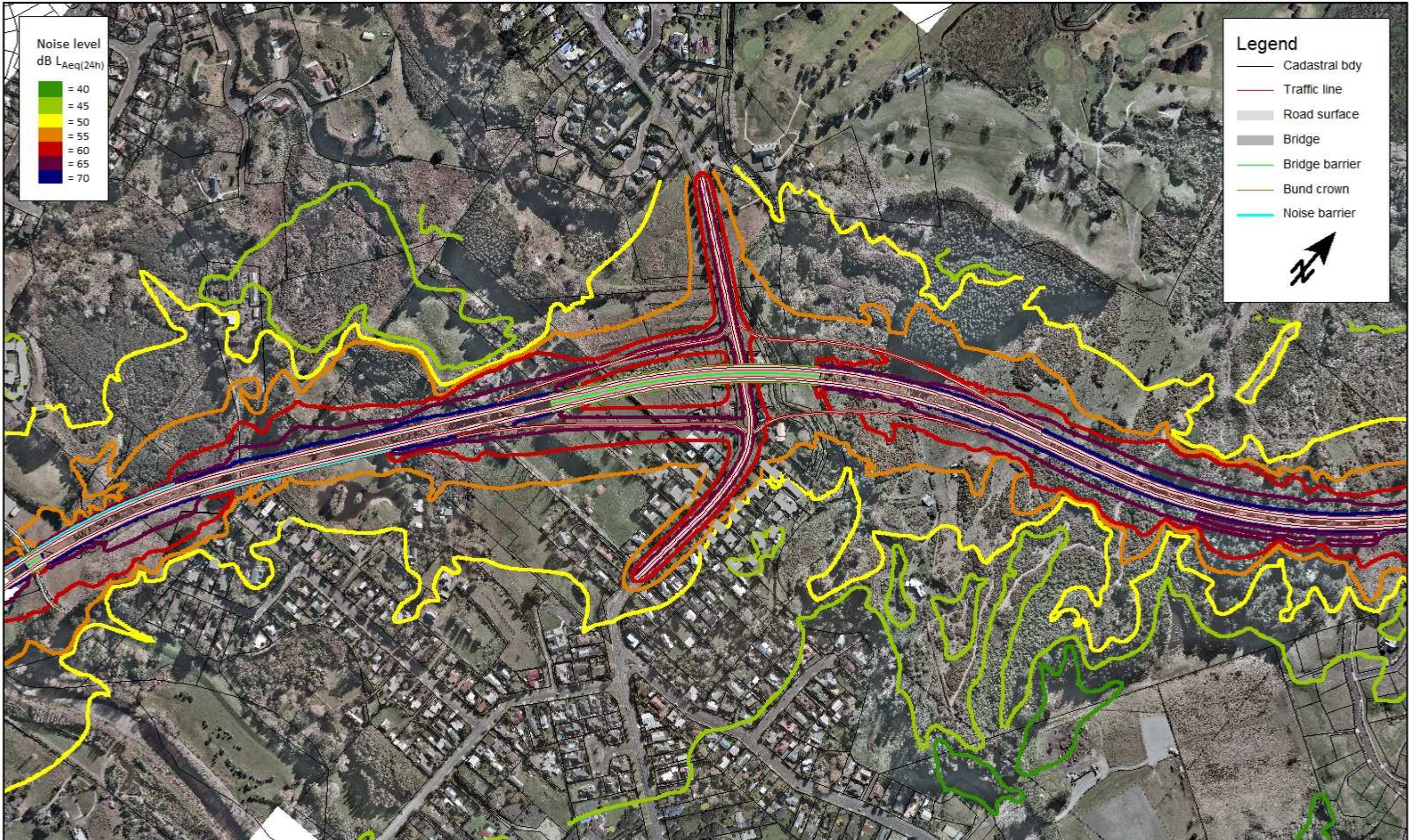
Mackays to Peka Peka

MACKAYS TO PEKA PEKA EXPRESSWAY
Sector 3
Preferred Mitigation Options

NOISE LEVEL
CONTOURS
SHEET 14 OF 18

Document Set:
M2PP-AEE-DWG

Drawing No.:
EN-NV-113



Legend

- Cadastral bdy
- Traffic line
- Road surface
- Bridge
- Bridge barrier
- Bund crown
- Noise barrier

Initials: SW
Date: 20/8/2011
Calculation No: 1030

A3 Scale 1:5000
0 25 50 100 150 200 m

MARSHALL DAY
Acoustics

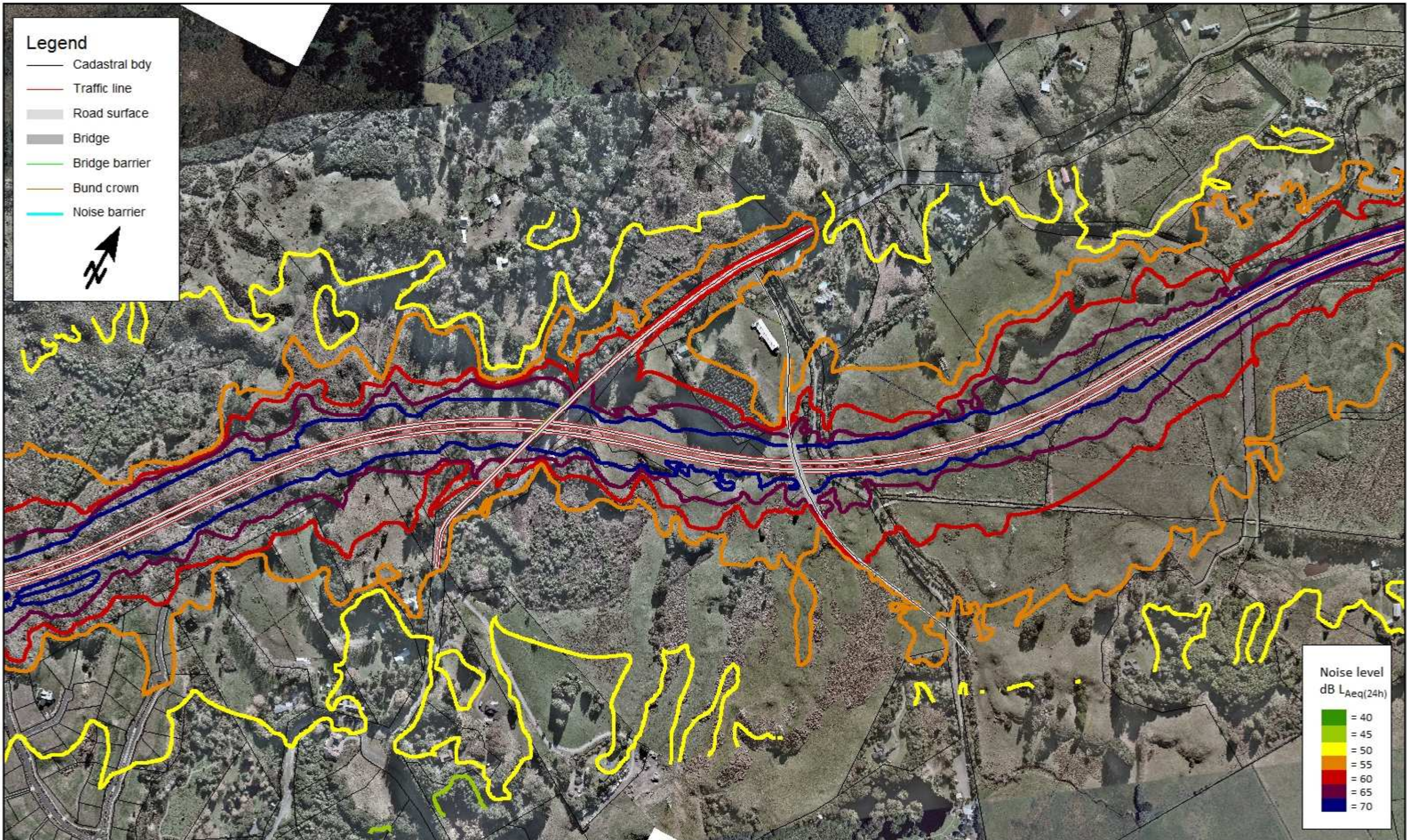
Mackays to Peka Peka

MACKAYS TO PEKA PEKA EXPRESSWAY
Sector 3
Preferred Mitigation Options

NOISE LEVEL
CONTOURS
SHEET 15 OF 18

Document Set:
M2PP-AEE-DWG

Drawing No.:
EN-NV-114



Initials: SW
 Date: 20/8/2011
 Calculation No: 1040

A3 Scale 1:5000
 0 25 50 100 150 200 m

MARSHALL DAY
 Acoustics

NEW ZEALAND TRANSPORT AGENCY
 Mackays to Peka Peka

MACKAYS TO PEKA PEKA EXPRESSWAY
Sector 4
Preferred Mitigation Options

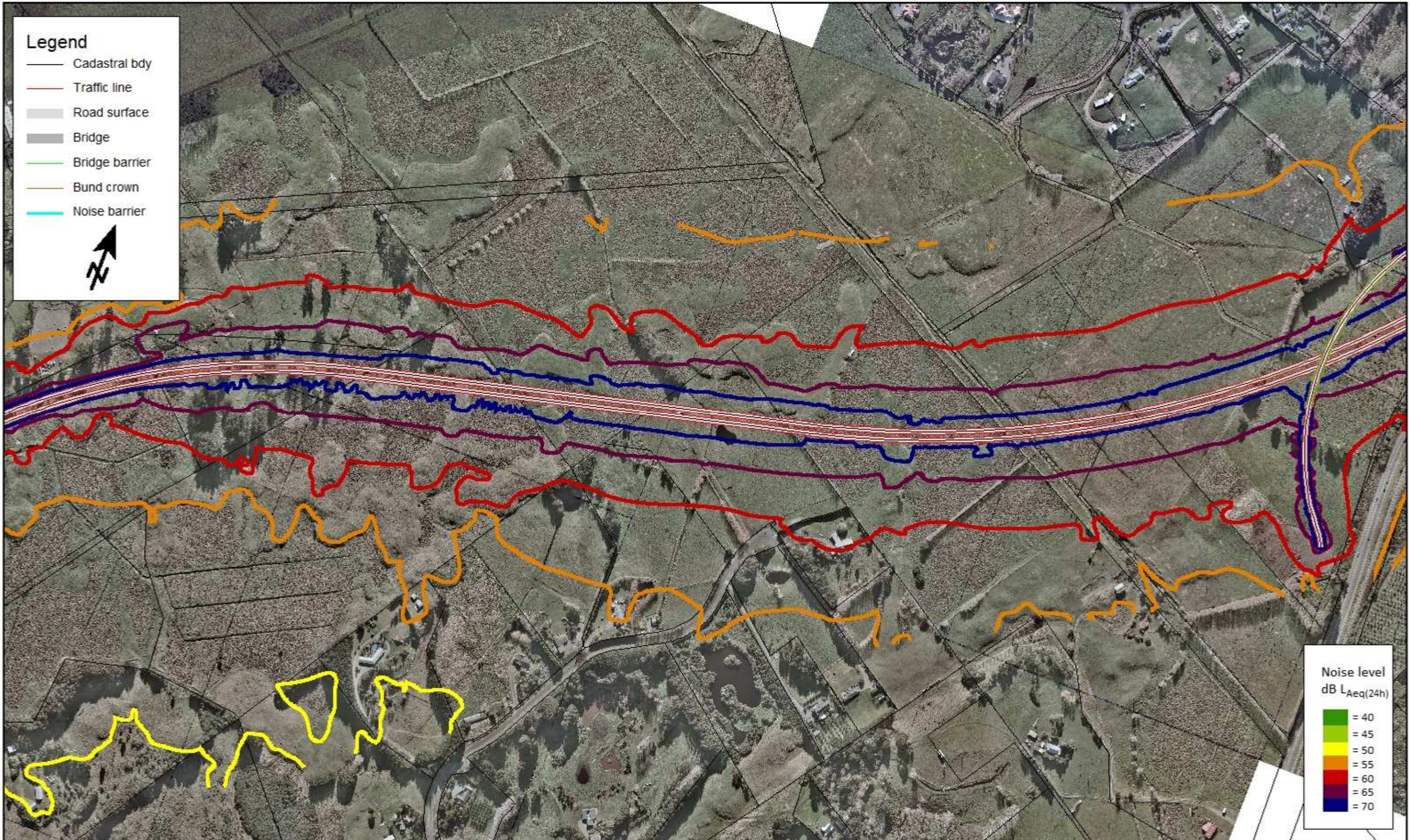
NOISE LEVEL
 CONTOURS
 SHEET 16 OF 18

Document Set:
 M2PP-AEE-DWG

Drawing No.:
 EN-NV-115

Legend

- Cadastral bdy
- Traffic line
- Road surface
- Bridge
- Bridge barrier
- Bund crown
- Noise barrier



Noise level
dB $L_{Aeq}(24h)$

- = 40
- = 45
- = 50
- = 55
- = 60
- = 65
- = 70

Initials: SW
Date: 20/8/2011
Calculation No: 1040

MARSHALL DAY
Acoustics



MACKAYS TO PEKA PEKA EXPRESSWAY
Sector 4
Preferred Mitigation Options

NOISE LEVEL
CONTOURS
SHEET 17 OF 18

Document Set:
M2PP-AEE-DWG

Drawing No.:
EN-NV-116

A3 Scale 1:5000
0 25 50 100 150 200 m



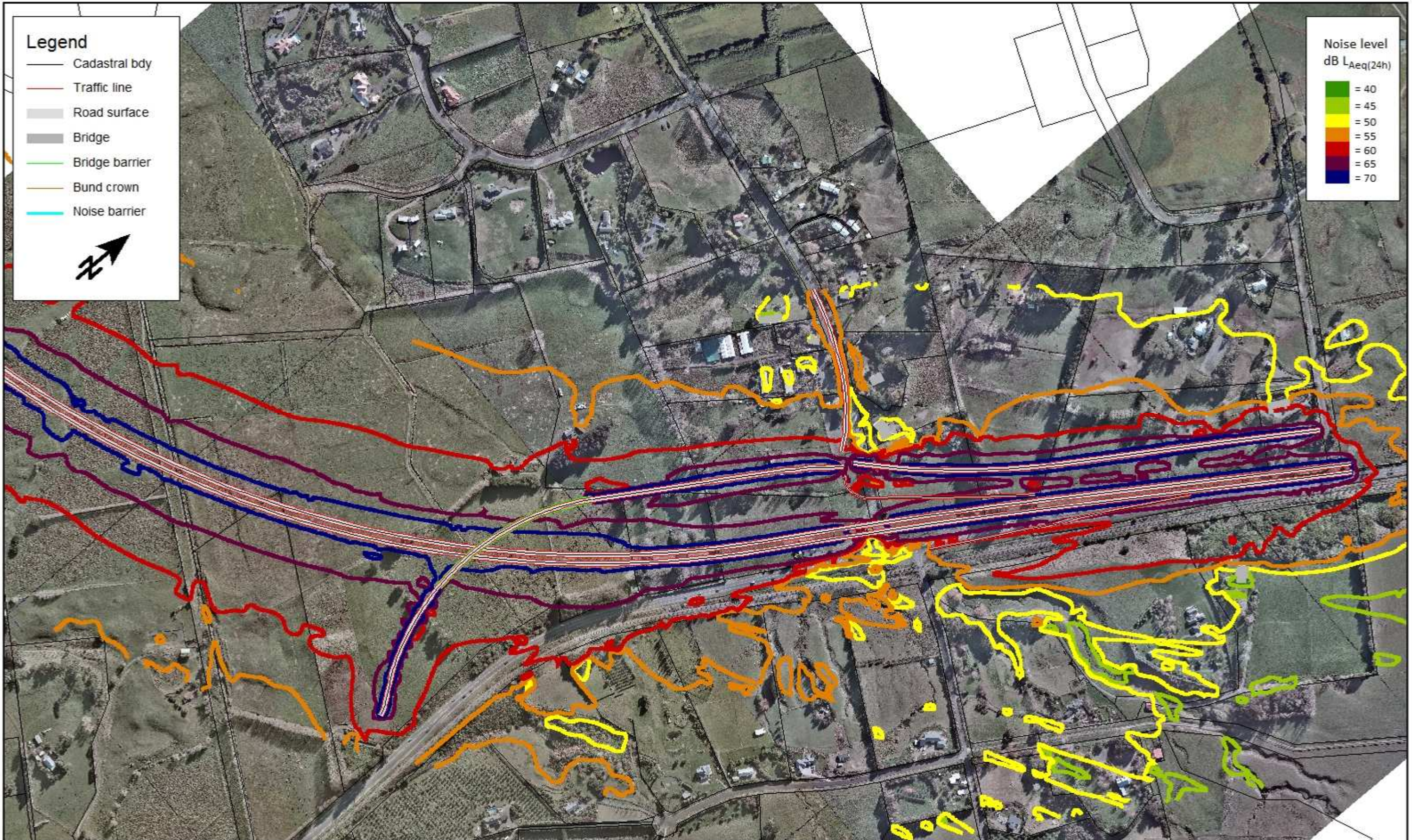
Legend

- Cadastral bdy
- Traffic line
- Road surface
- Bridge
- Bridge barrier
- Bund crown
- Noise barrier



**Noise level
dB L_{Aeq}(24h)**

- = 40
- = 45
- = 50
- = 55
- = 60
- = 65
- = 70



Initials: SW
Date: 20/8/2011
Calculation No: 1040

MARSHALL DAY
Acoustics

NEW ZEALAND TRANSPORT AGENCY
Mackays to Peka Peka

**MACKAYS TO PEKA PEKA EXPRESSWAY
Sector 4
Preferred Mitigation Options**

NOISE LEVEL
CONTOURS
SHEET 18 OF 18

Document Set:
M2PP-AEE-DWG

Drawing No.:
EN-NV-117

A3 Scale 1:5000
0 25 50 100 150 200 m