

Noise level  
dB LAeq(24h)

- ≤ 57 Category A
- 57 < ≤ 64 Category B
- 64 < Category C



**Legend**

- Cadastral bdy
- Traffic line
- Road surface
- Bridge
- Bridge barrier
- Bund crown
- Noise barrier



Initials: SW  
Date: 18/8/2011  
Calculation No: 242

**MARSHALL DAY**  
Acoustics



**MACKAYS TO PEKA PEKA EXPRESSWAY**  
**Sector 2**  
**Kapiti Road to Mazengarb Road (South)**  
**Mitigation Option 1**

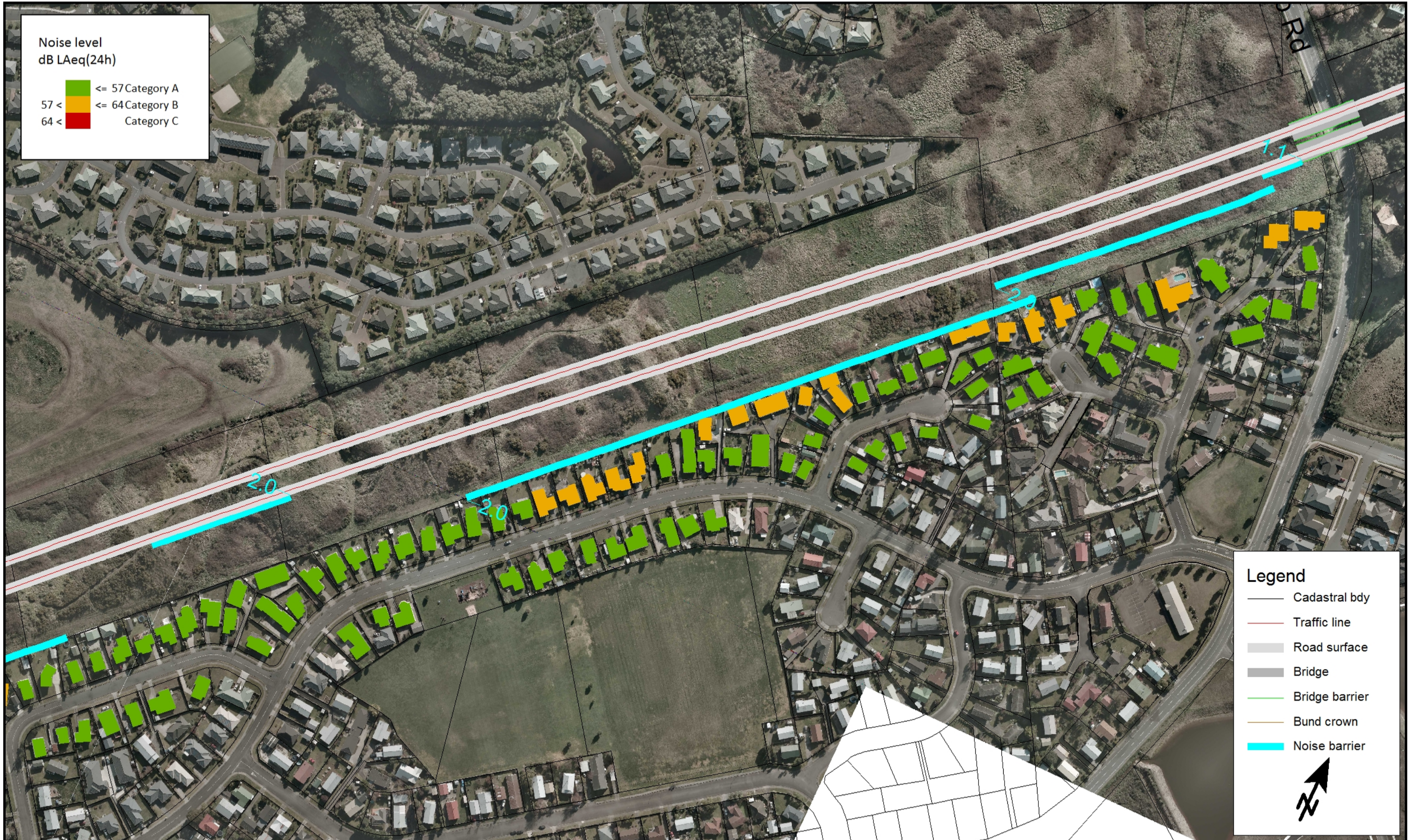
NOISE PREDICTION  
SCENARIOS  
SHEET 24 OF 75

Document Set:  
M2PP-AEE-DWG  
  
Drawing No.:  
**EN-NV-043**

A3 Scale 1:2500  
0 12.5 25 50 75 100 m

Noise level  
dB LAeq(24h)

- ≤ 57 Category A
- 57 < ≤ 64 Category B
- 64 < Category C



**Legend**

- Cadastral bdy
- Traffic line
- Road surface
- Bridge
- Bridge barrier
- Bund crown
- Noise barrier



Initials: SW  
Date: 18/8/2011  
Calculation No: 242

**MARSHALL DAY**  
Acoustics



**MACKAYS TO PEKA PEKA EXPRESSWAY**  
**Sector 2**  
**Kapiti Road to Mazengarb Road (North)**  
**Mitigation Option 1**

NOISE PREDICTION  
SCENARIOS  
SHEET 25 OF 75

Document Set:  
M2PP-AEE-DWG  
  
Drawing No.:  
**EN-NV-044**

A3 Scale 1:2500  
0 12.5 25 50 75 100 m

Noise level  
dB LAeq(24h)

- ≤ 57 Category A
- 57 < ≤ 64 Category B
- 64 < Category C



**Legend**

- Cadastral bdy
- Traffic line
- Road surface
- Bridge
- Bridge barrier
- Bund crown
- Noise barrier

Initials: SW  
Date: 18/8/2011  
Calculation No: 243

A3 Scale 1:2500  
0 12.5 25 50 75 100 m

**MARSHALL DAY**  
Acoustics

Mackays to Peka Peka

**MACKAYS TO PEKA PEKA EXPRESSWAY**  
**Sector 2**  
**Kapiti Road to Mazengarb Road (South)**  
**Mitigation Option 2**

NOISE PREDICTION  
SCENARIOS  
SHEET 26 OF 75

Document Set:  
M2PP-AEE-DWG

Drawing No.:  
**EN-NV-045**

Noise level  
dB LAeq(24h)

- ≤ 57 Category A
- 57 < ≤ 64 Category B
- 64 < Category C



**Legend**

- Cadastral bdy
- Traffic line
- Road surface
- Bridge
- Bridge barrier
- Bund crown
- Noise barrier



Initials: SW  
Date: 18/8/2011  
Calculation No: 243

**MARSHALL DAY**  
Acoustics



**MACKAYS TO PEKA PEKA EXPRESSWAY**  
**Sector 2**  
**Kapiti Road to Mazengarb Road (North)**  
**Mitigation Option 2**

NOISE PREDICTION  
SCENARIOS  
SHEET 27 OF 75

Document Set:  
M2PP-AEE-DWG  
  
Drawing No.:  
**EN-NV-046**

A3 Scale 1:2500  
0 12.5 25 50 75 100  
m

Noise level  
dB LAeq(24h)

- ≤ 57 Category A
- 57 < ≤ 64 Category B
- 64 < Category C



**Legend**

- Cadastral bdy
- Traffic line
- Road surface
- Bridge
- Bridge barrier
- Bund crown
- Noise barrier



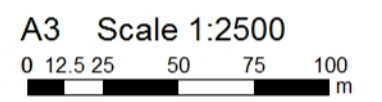
Initials: SW  
Date: 18/8/2011  
Calculation No: 244

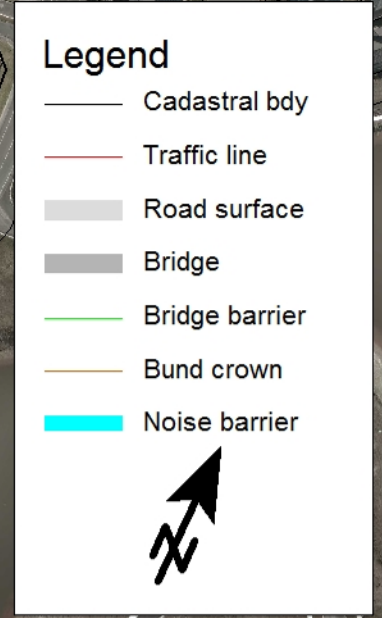
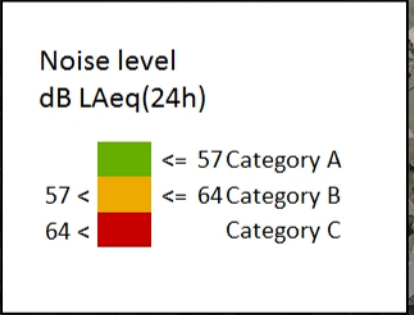


**MACKAYS TO PEKA PEKA EXPRESSWAY  
Sector 2  
Kapiti Road to Mazengarb Road (South)  
Mitigation Option 3 (Noise Guidelines)**

NOISE PREDICTION  
SCENARIOS  
SHEET 28 OF 75

Document Set:  
M2PP-AEE-DWG  
  
Drawing No.:  
EN-NV-047





Initials: SW  
Date: 18/8/2011  
Calculation No: 244

A3 Scale 1:2500  
0 12.5 25 50 75 100 m

**MARSHALL DAY**  
Acoustics



**HZ TRANSPORT AGENCY**  
Mackays to Peka Peka



**MACKAYS TO PEKA PEKA EXPRESSWAY**  
**Sector 2**  
**Kapiti Road to Mazengarb Road (North)**  
**Mitigation Option 3 (Noise Guidelines)**

NOISE PREDICTION SCENARIOS  
SHEET 29 OF 75

Document Set:  
M2PP-AEE-DWG

Drawing No.:  
EN-NV-048