




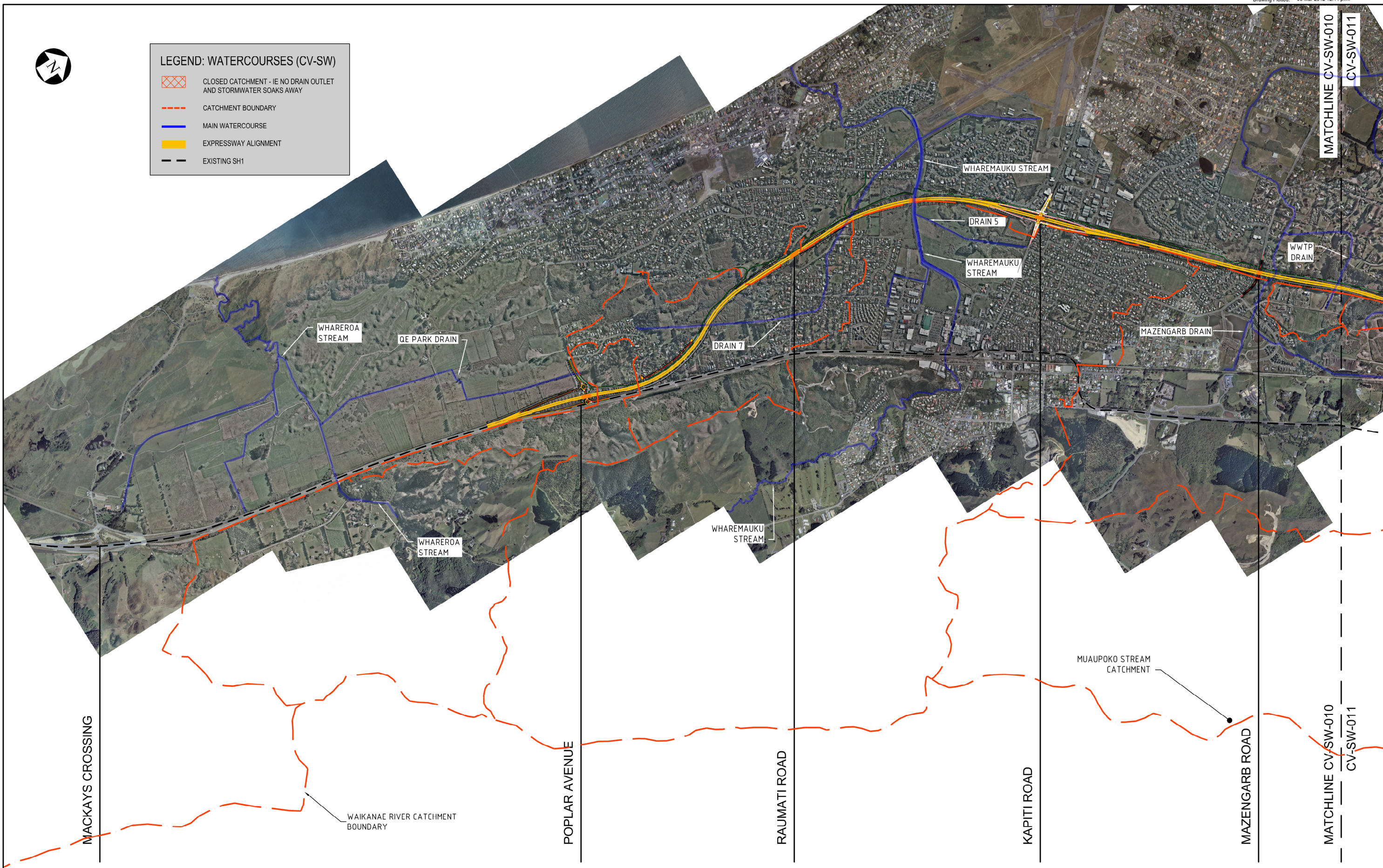




LEGEND: WATERCOURSES (CV-SW)

-  CLOSED CATCHMENT - IE NO DRAIN OUTLET AND STORMWATER SOAKS AWAY
-  CATCHMENT BOUNDARY
-  MAIN WATERCOURSE
-  EXPRESSWAY ALIGNMENT
-  EXISTING SH1



NOTES:

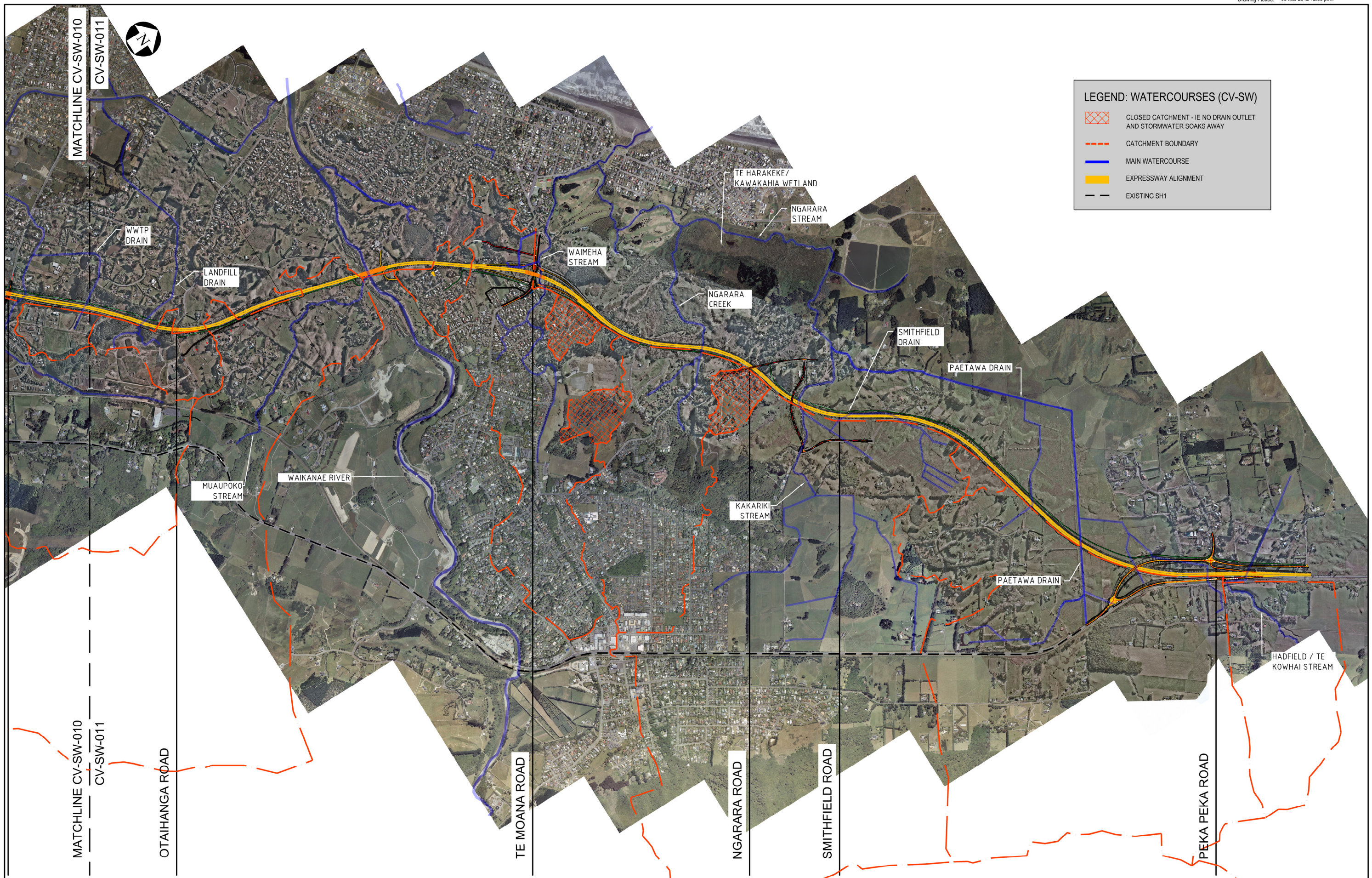
Original Scale (A3)				
NTS				
1	AEE LODGEMENT	NRN	15.03.12	
Revision:	Amendment	Approved:	Date:	



Project: MACKAYS TO PEKA PEKA EXPRESSWAY

Title: MAIN WATERCOURSES SHEET 1 OF 2

Status: FOR CONSENTING	
Document ID: M2PP-AEE-DWG	Rev:
Drawing No: CV-SW -010	1



LEGEND: WATERCOURSES (CV-SW)

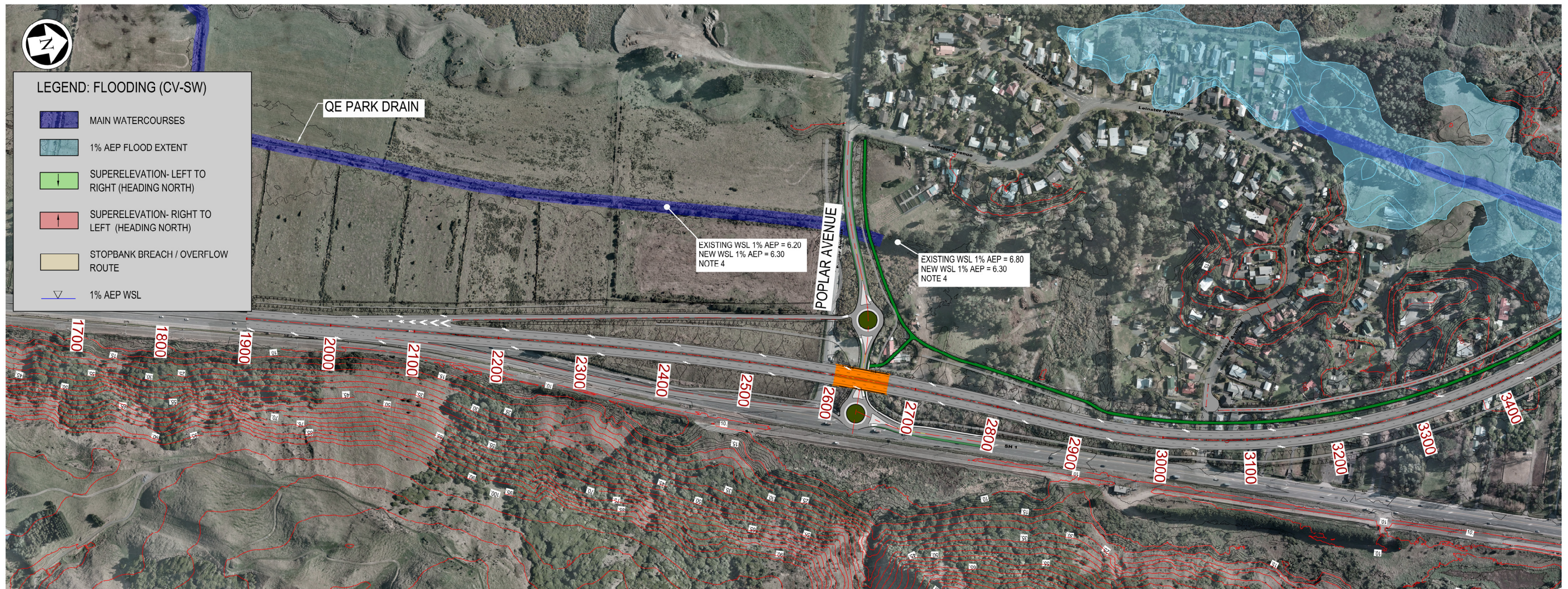
- CLOSED CATCHMENT - IE NO DRAIN OUTLET AND STORMWATER SOAKS AWAY
- CATCHMENT BOUNDARY
- MAIN WATERCOURSE
- EXPRESSWAY ALIGNMENT
- EXISTING SH1

NOTES:

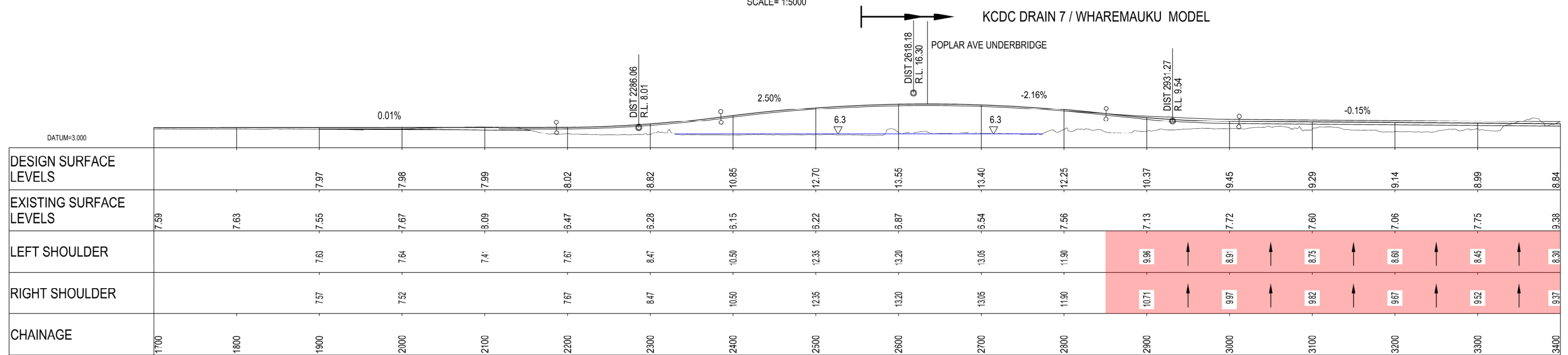
Original Scale (A3)			
NTS			
1	AEE LODGEMENT	NRN	15.03.12
Revision:	Amendment	Approved:	Date



Project: MACKAYS TO PEKA PEKA EXPRESSWAY	
Title: MAIN WATERCOURSES SHEET 2 OF 2	
Status: FOR CONSENTING	
Document ID: M2PP-AEE-DWG	Rev:
Drawing No: CV-SW-011	1



PLAN
SCALE= 1:5000



LONGSECTION
HORIZ. SCALE= 1:5000 VERT. SCALE= 1:1000

NOTES:

- FLOOD EXTENTS INCLUDE CLIMATE CHANGE TO 2090 (MID ESTIMATE)
- ALL LEVELS ARE IN WELLINGTON 1953 HEIGHT DATUM
- WSL= WATER SURFACE LEVEL
- NO FLOOD MAPPING AVAILABLE. LEVELS DETERMINED BY VOLUMETRIC ASSESSMENT.

Original Scale (A3)	
As Shown	
1 AEE LODGEMENT	NRN 15.03.12
Revision: Amendment	Approved: Date



Project: **MACKAYS TO PEKA PEKA EXPRESSWAY**

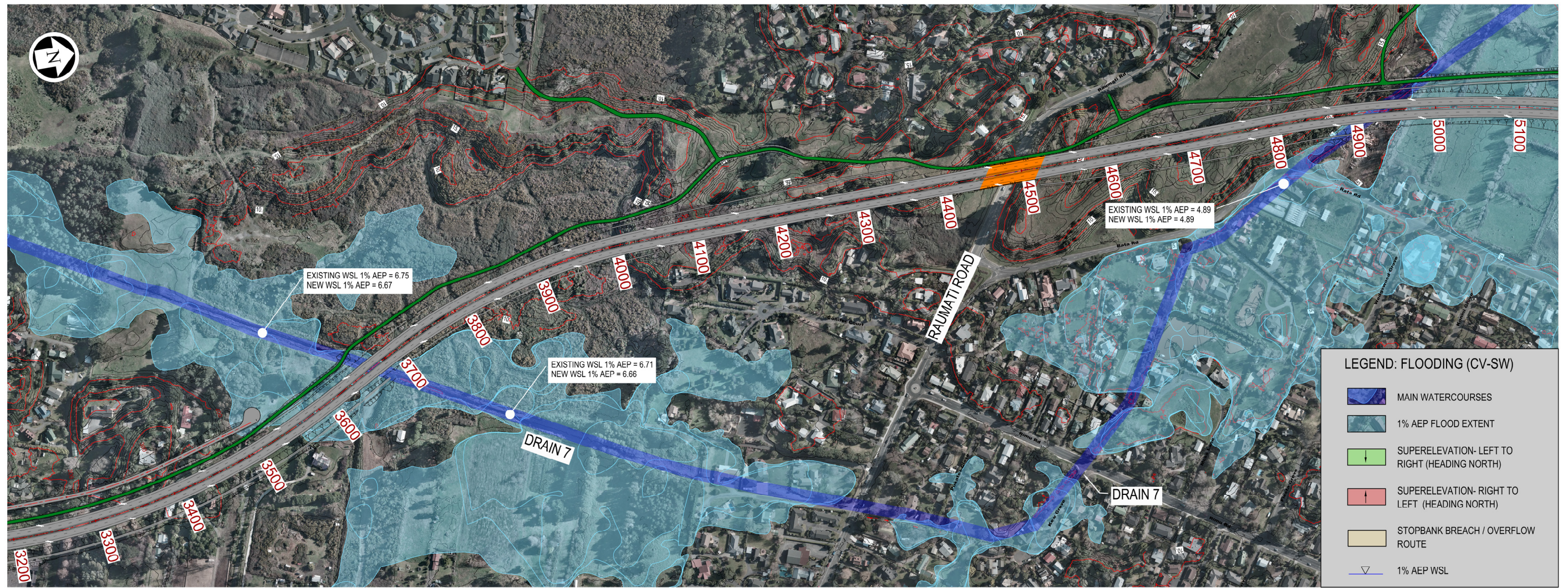
Title: **1% AEP FLOODING EXTENTS SHEET 1 OF 10**

Status: FOR CONSENTING

Document ID: M2PP-AEE-DWG

Drawing No: **CV-SW-022**

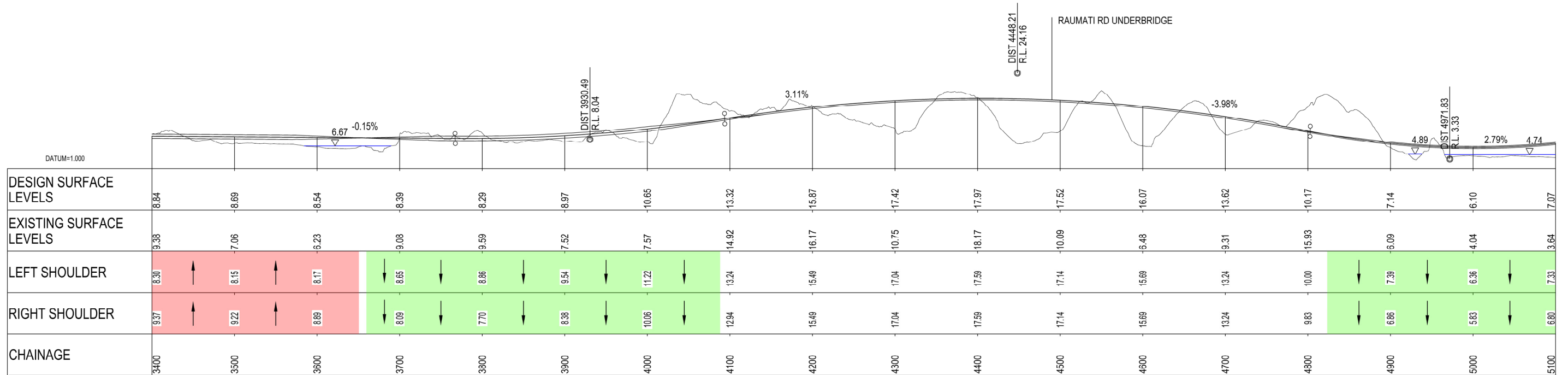
Rev: 1



KCDC DRAIN 7 / WHAREMAUKU MODEL

PLAN
SCALE= 1:5000

KCDC DRAIN 7 / WHAREMAUKU MODEL



LONGSECTION
HORIZ. SCALE= 1:5000 VERT. SCALE= 1:1000

NOTES:

- FLOOD EXTENTS INCLUDE CLIMATE CHANGE TO 2090 (MID ESTIMATE)
- ALL LEVELS ARE IN WELLINGTON 1953 HEIGHT DATUM
- WSL= WATER SURFACE LEVEL

Original Scale (A3)
As Shown

1	AEE LODGEMENT	NRN	15.03.12
Revision:	Amendment:	Approved:	Date:



Project: **MACKAYS TO PEKA PEKA EXPRESSWAY**

Title: **1% AEP FLOODING EXTENT SHEET 2 OF 10**

Status: FOR CONSENTING

Document ID: M2PP-AEE-DWG Rev. 1

Drawing No: **CV-SW-023**