

LEGEND:

- SETTLEMENT ANALYSES - CROSS SECTIONS
- ROAD ALIGNMENT CONSTRUCTION DESIGNATION LINE
- NON PEAT
- PEAT
- OFFSET FLOOD STORAGE AREA
- STORMWATER WETLAND

TOTAL ESTIMATED SETTLEMENT (mm)

- 12.5mm - 25mm
- 25mm - 50mm
- 50mm - 100mm
- 100mm - 200mm
- > 200mm

NOTES:

Original Scale (A3)
1:5000

1	AEE LODGEMENT	NRN	15.03.12
Revision:	Amendment	Approved:	Date:



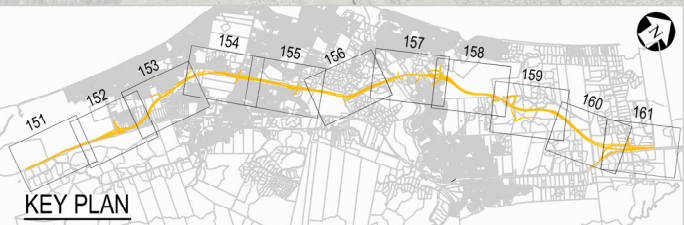
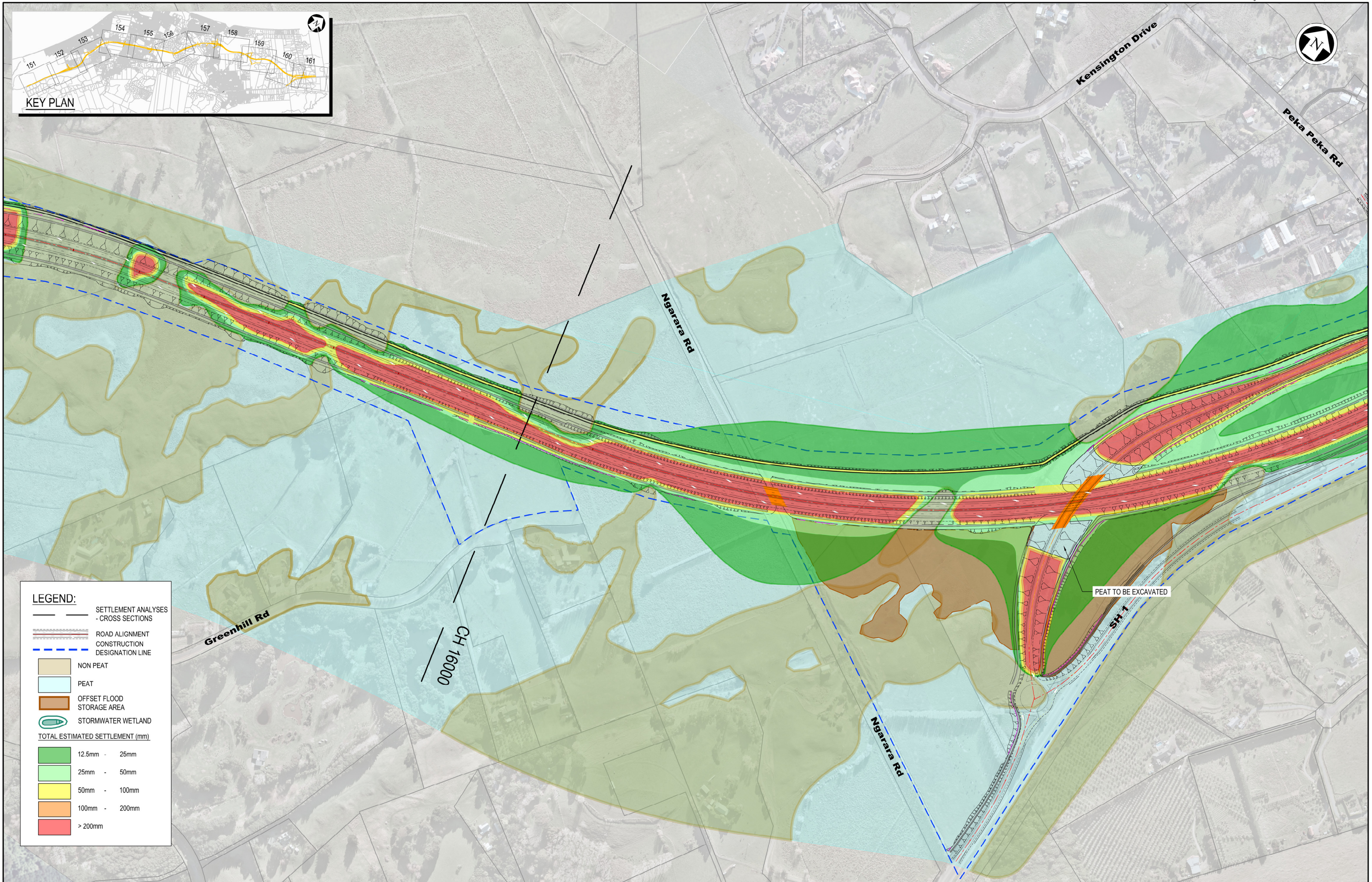
Project: **MACKAYS TO PEKA PEKA EXPRESSWAY**

Title: **TOTAL ESTIMATED SETTLEMENTS SHEET 9 OF 11**

Status: FOR CONSENTING

Document ID: M2PP-AEE-DWG Rev: 1

Drawing No: **GT-SE-159**



LEGEND:

- SETTLEMENT ANALYSES - CROSS SECTIONS
- ROAD ALIGNMENT
- CONSTRUCTION DESIGNATION LINE
- NON PEAT
- PEAT
- OFFSET FLOOD STORAGE AREA
- STORMWATER WETLAND

TOTAL ESTIMATED SETTLEMENT (mm)

- 12.5mm - 25mm
- 25mm - 50mm
- 50mm - 100mm
- 100mm - 200mm
- > 200mm

NOTES:

Original Scale (A3)			
1:5000			
1 AEE LODGEMENT	NRN	15.03.12	
Revision: Amendment	Approved:	Date:	



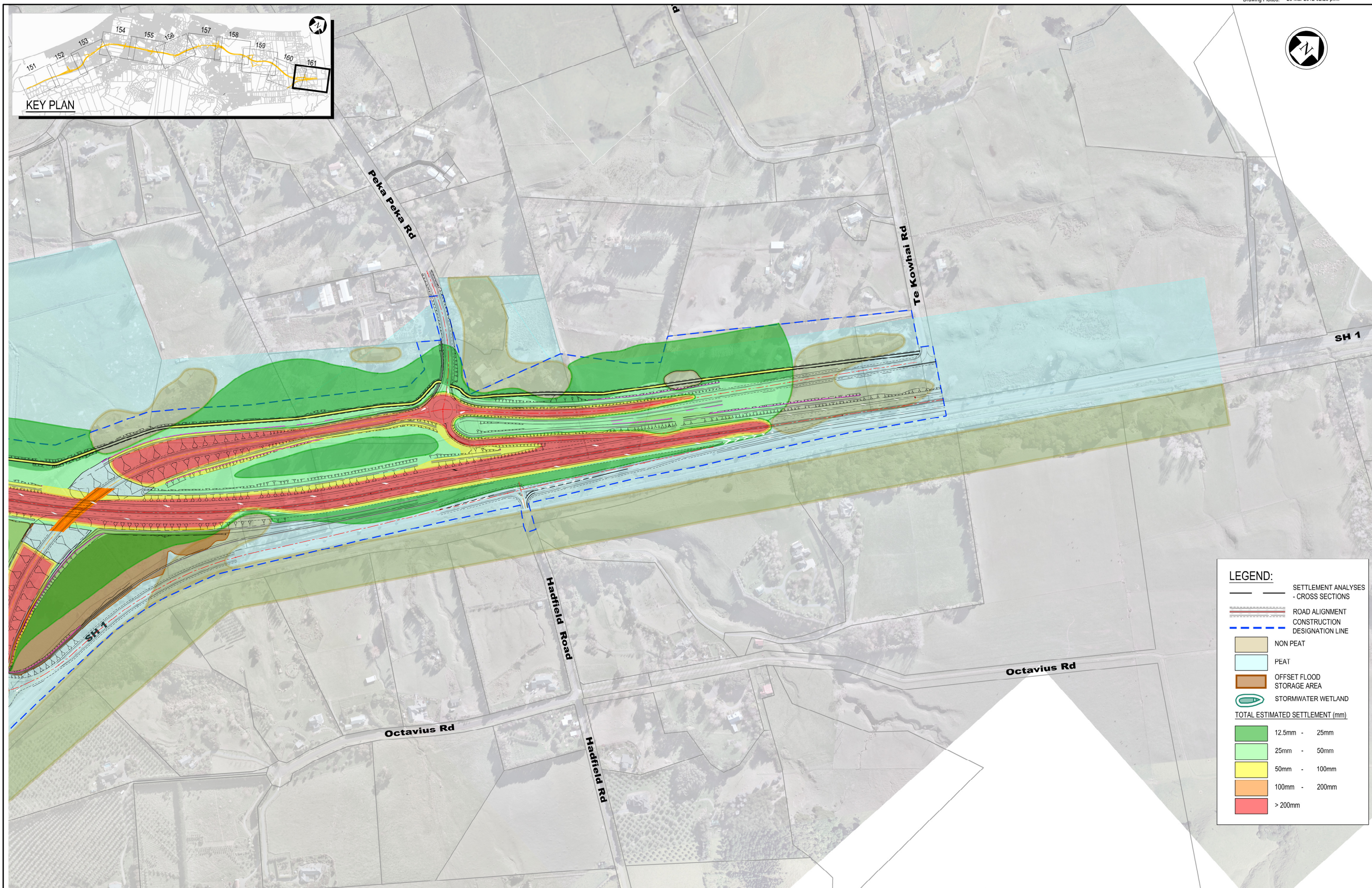
Project: MACKAYS TO PEKA PEKA EXPRESSWAY

Title: TOTAL ESTIMATED SETTLEMENTS SHEET 10 OF 11

Status: FOR CONSENTING

Document ID: M2PP-AEE-DWG Rev: 1

Drawing No: GT-SE-160



LEGEND:

- SETTLEMENT ANALYSES - CROSS SECTIONS
- ROAD ALIGNMENT
- CONSTRUCTION DESIGNATION LINE
- NON PEAT
- PEAT
- OFFSET FLOOD STORAGE AREA
- STORMWATER WETLAND

TOTAL ESTIMATED SETTLEMENT (mm)

- 12.5mm - 25mm
- 25mm - 50mm
- 50mm - 100mm
- 100mm - 200mm
- > 200mm

NOTES:

Original Scale (A3)				
1	AEE LODGEMENT	NRN	15.03.12	
Revision:	Amendment	Approved:	Date:	



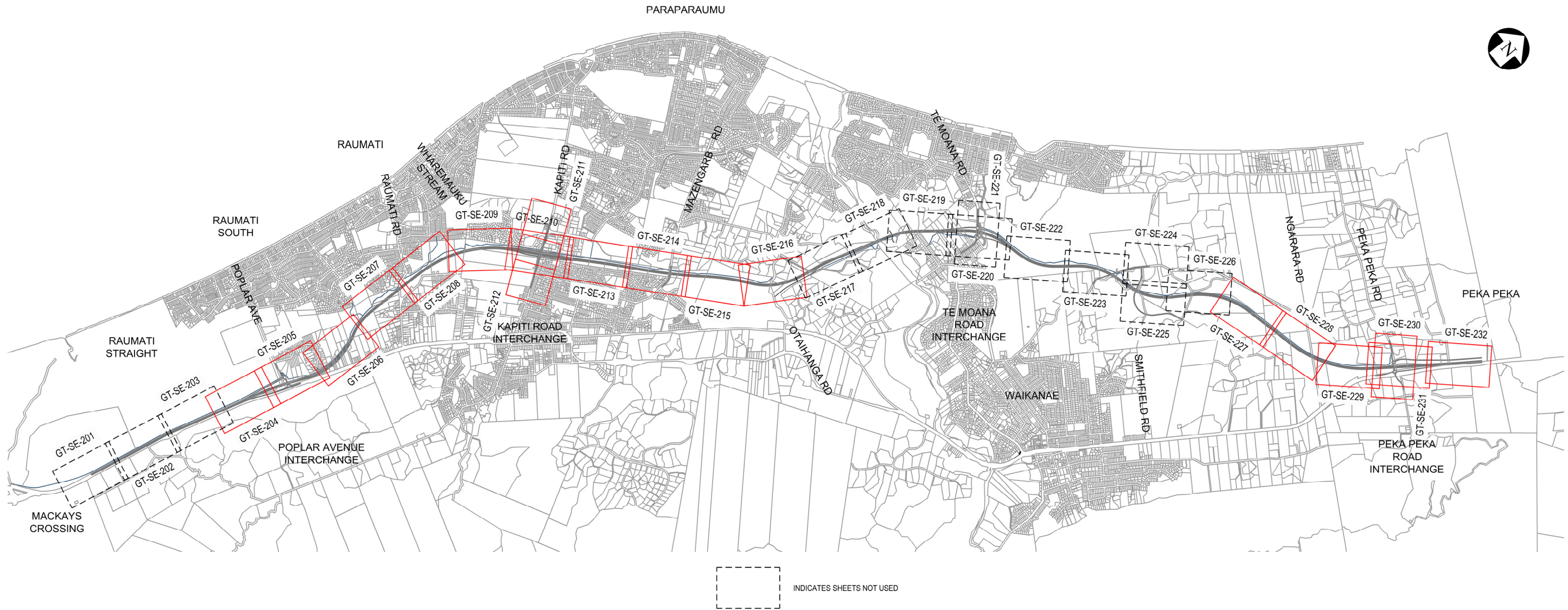
Project: **MACKAYS TO PEKA PEKA EXPRESSWAY**

Title: **TOTAL ESTIMATED SETTLEMENTS SHEET 11 OF 11**

Status: FOR CONSENTING

Document ID: M2PP-AEE-DWG Rev: 1

Drawing No: **GT-SE-161**



NOTES:

Original Scale (A3)

1	AEE LODGEMENT	NRN	15.03.12
Revision:	Amendment	Approved:	Date:



Project: **MACKAYS TO PEKA PEKA EXPRESSWAY**

Title: **EXISTING SERVICES SETTLEMENT CONTOURS SHEET INDEX**

Status: FOR CONSENTING

Document ID: M2PP-AEE-DWG

Drawing No: **GT-SE-200**

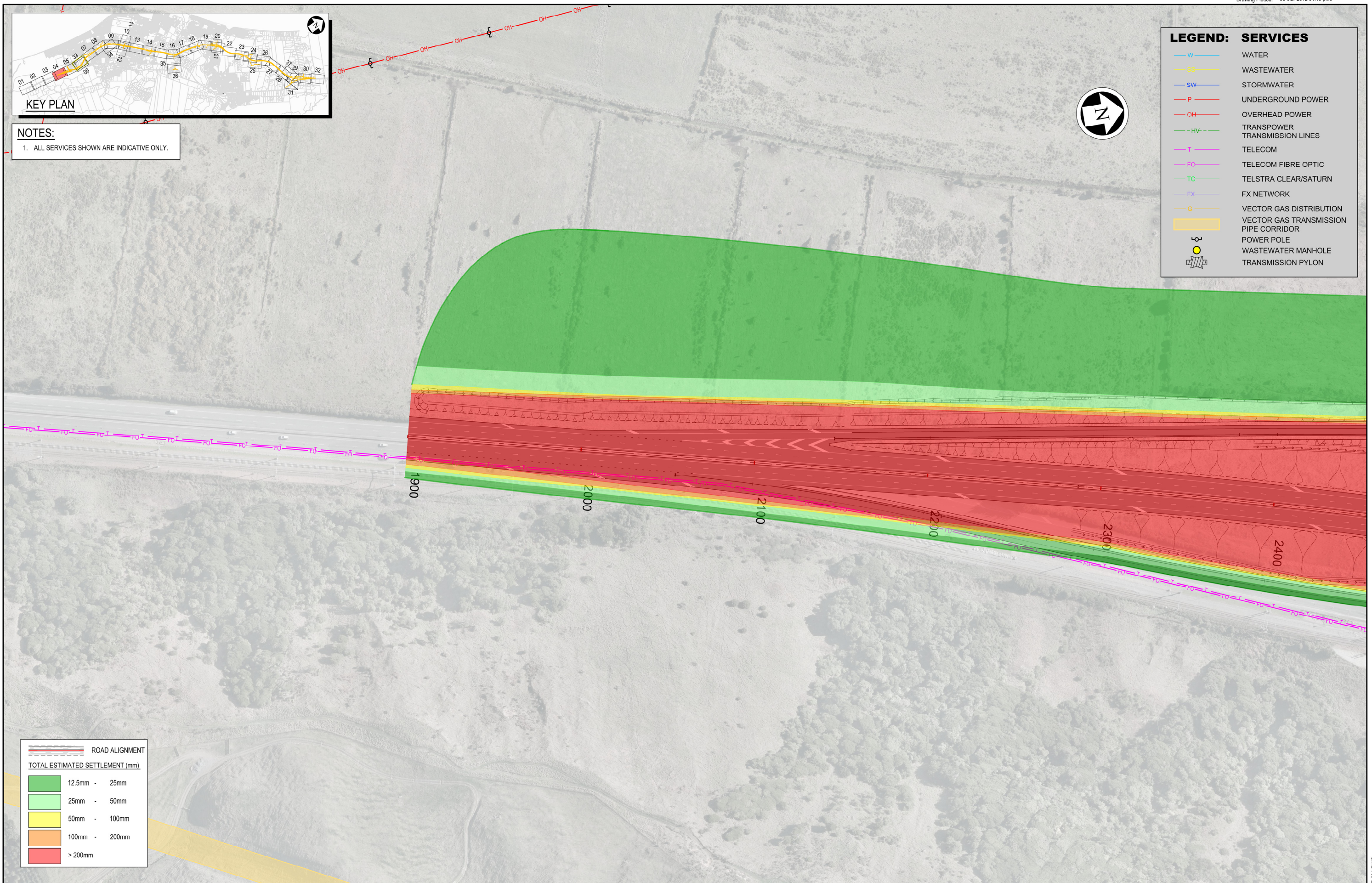
Rev: 1



NOTES:
1. ALL SERVICES SHOWN ARE INDICATIVE ONLY.

LEGEND: SERVICES

W	WATER
SS	WASTEWATER
SW	STORMWATER
P	UNDERGROUND POWER
OH	OVERHEAD POWER
HV	TRANSMISSION LINES
T	TELECOM
FO	TELECOM FIBRE OPTIC
TC	TELSTRA CLEAR/SATURN
FX	FX NETWORK
G	VECTOR GAS DISTRIBUTION
(Yellow Box)	VECTOR GAS TRANSMISSION PIPE CORRIDOR
(Circle with cross)	POWER POLE
(Circle with dot)	WASTEWATER MANHOLE
(Towers)	TRANSMISSION PYLON



ROAD ALIGNMENT

TOTAL ESTIMATED SETTLEMENT (mm)

(Green)	12.5mm - 25mm
(Light Green)	25mm - 50mm
(Yellow)	50mm - 100mm
(Orange)	100mm - 200mm
(Red)	> 200mm

NOTES:

Original Scale (A3)			
1	AEE LODGEMENT	NRN	15.03.12
Revision:	Amendment	Approved:	Date:



Project: MACKAYS TO PEKA PEKA EXPRESSWAY

Title: EXISTING SERVICES SETTLEMENT CONTOURS

Status: FOR CONSENTING

Document ID: M2PP-AEE-DWG Rev. 1

Drawing No: GT-SE-204