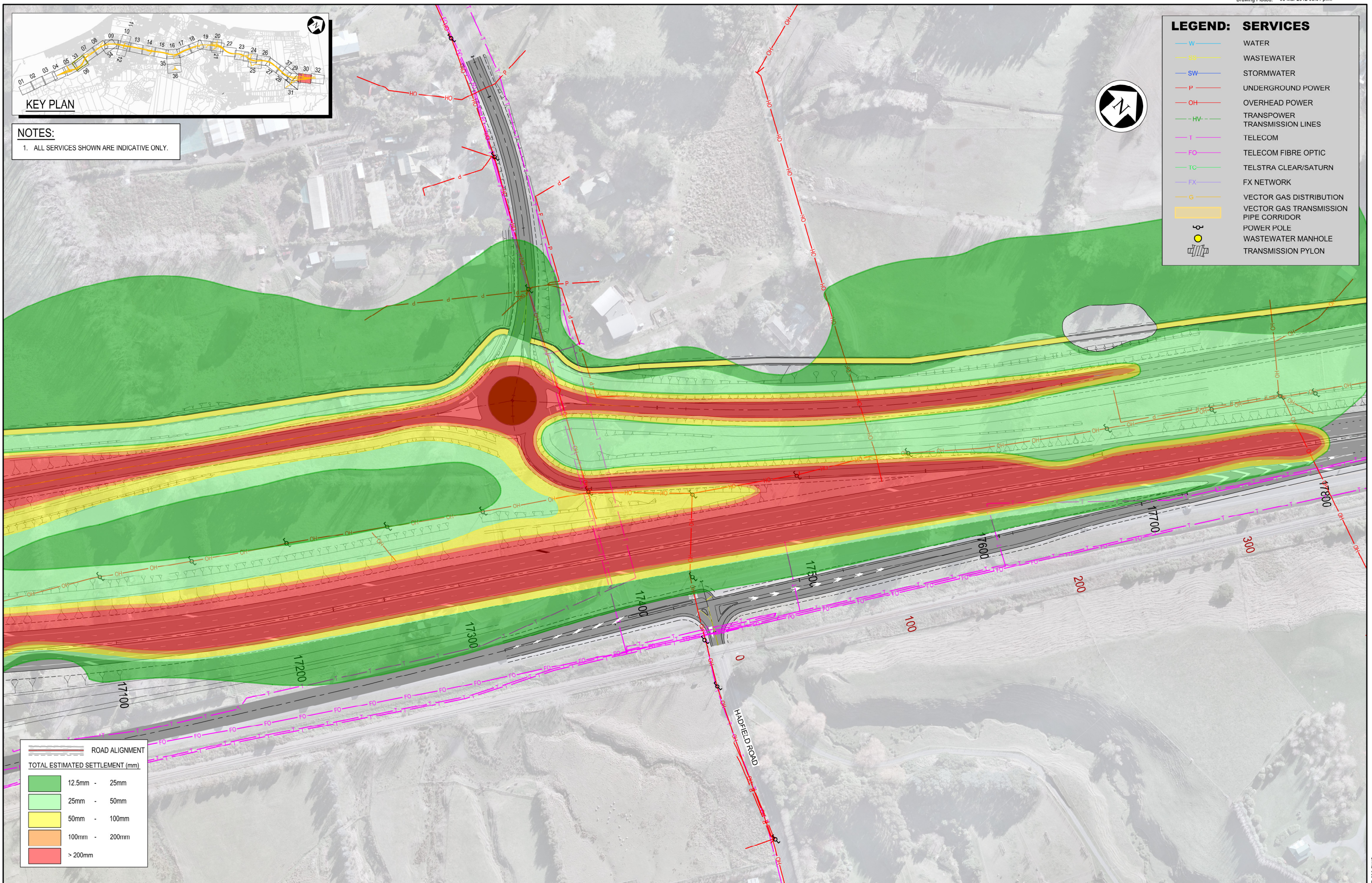


NOTES:
1. ALL SERVICES SHOWN ARE INDICATIVE ONLY.

LEGEND: SERVICES

- W WATER
- SS WASTEWATER
- SW STORMWATER
- P UNDERGROUND POWER
- OH OVERHEAD POWER
- HV TRANSMISSION LINES
- T TELECOM
- FO TELECOM FIBRE OPTIC
- TC TELSTRA CLEAR/SATURN
- FX FX NETWORK
- G VECTOR GAS DISTRIBUTION
- PIPE CORRIDOR
- POWER POLE
- WASTEWATER MANHOLE
- TRANSMISSION PYLON



ROAD ALIGNMENT	
TOTAL ESTIMATED SETTLEMENT (mm)	
	12.5mm - 25mm
	25mm - 50mm
	50mm - 100mm
	100mm - 200mm
	> 200mm

NOTES:

Original Scale (A3)	
1:2000	
1 AEE LODGEMENT	NRN 15.03.12
Revision: Amendment	Approved: Date:



Project: MACKAYS TO PEKA PEKA EXPRESSWAY

Title: EXISTING SERVICES SETTLEMENT CONTOURS

Status: FOR CONSENTING

Document ID: M2PP-AEE-DWG Rev:

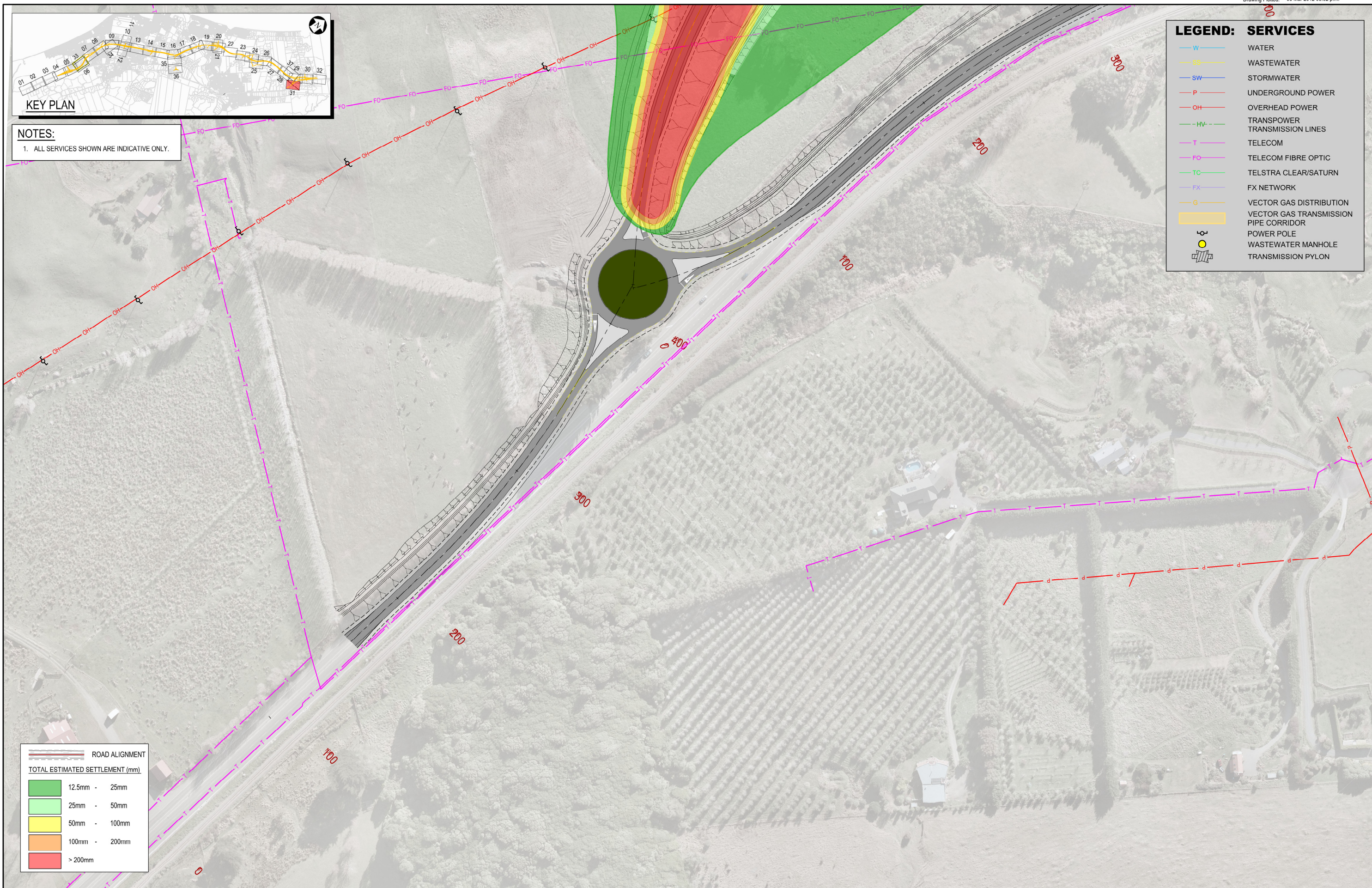
Drawing No: GT-SE-230 1



NOTES:
1. ALL SERVICES SHOWN ARE INDICATIVE ONLY.

LEGEND: SERVICES

- W WATER
- SS WASTEWATER
- SW STORMWATER
- P UNDERGROUND POWER
- OH OVERHEAD POWER
- HV TRANSPOWER TRANSMISSION LINES
- T TELECOM
- FO TELECOM FIBRE OPTIC
- TC TELSTRA CLEAR/SATURN
- FX FX NETWORK
- G VECTOR GAS DISTRIBUTION
- VECTOR GAS TRANSMISSION PIPE CORRIDOR
- POWER POLE
- WASTEWATER MANHOLE
- TRANSMISSION PYLON



ROAD ALIGNMENT

TOTAL ESTIMATED SETTLEMENT (mm)

	12.5mm - 25mm
	25mm - 50mm
	50mm - 100mm
	100mm - 200mm
	> 200mm

NOTES:

Original Scale (A3)			
1:2000			
1	AEE LODGEMENT	NRN	15.03.12
Revision:	Amendment	Approved:	Date:



Project: MACKAYS TO PEKA PEKA EXPRESSWAY

Title: EXISTING SERVICES SETTLEMENT CONTOURS

Status: FOR CONSENTING

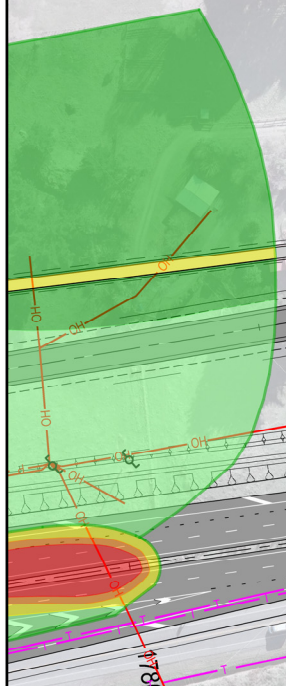
Document ID: M2PP-AEE-DWG	Rev:
Drawing No: GT-SE-231	1



NOTES:
1. ALL SERVICES SHOWN ARE INDICATIVE ONLY.

LEGEND: SERVICES

- W WATER
- SS WASTEWATER
- SW STORMWATER
- P UNDERGROUND POWER
- OH OVERHEAD POWER
- HV TRANSPOWER TRANSMISSION LINES
- T TELECOM
- FO TELECOM FIBRE OPTIC
- TC TELSTRA CLEAR/SATURN
- FX FX NETWORK
- G VECTOR GAS DISTRIBUTION
- VECTOR GAS TRANSMISSION PIPE CORRIDOR
- POWER POLE
- WASTEWATER MANHOLE
- TRANSMISSION PYLON



ROAD ALIGNMENT	
TOTAL ESTIMATED SETTLEMENT (mm)	
	12.5mm - 25mm
	25mm - 50mm
	50mm - 100mm
	100mm - 200mm
	> 200mm

NOTES:

Original Scale (A3)
1:2000

1	AEE LODGEMENT	NRN	15.03.12
Revision:	Amendment	Approved:	Date:



Project: MACKAYS TO PEKA PEKA EXPRESSWAY

Title: EXISTING SERVICES SETTLEMENT CONTOURS

Status: FOR CONSENTING

Document ID: M2PP-AEE-DWG	Rev:
Drawing No: GT-SE-232	1