

NOTES:

Original Scale (A3)

Revision	Description	Approved	Date
1	AEE LODGEMENT	NRN	15.03.12
	Amendment		



**Project:** MACKAYS TO PEKA PEKA EXPRESSWAY

**Title:** GEOTECHNICAL INVESTIGATION POINTS SHEET INDEX

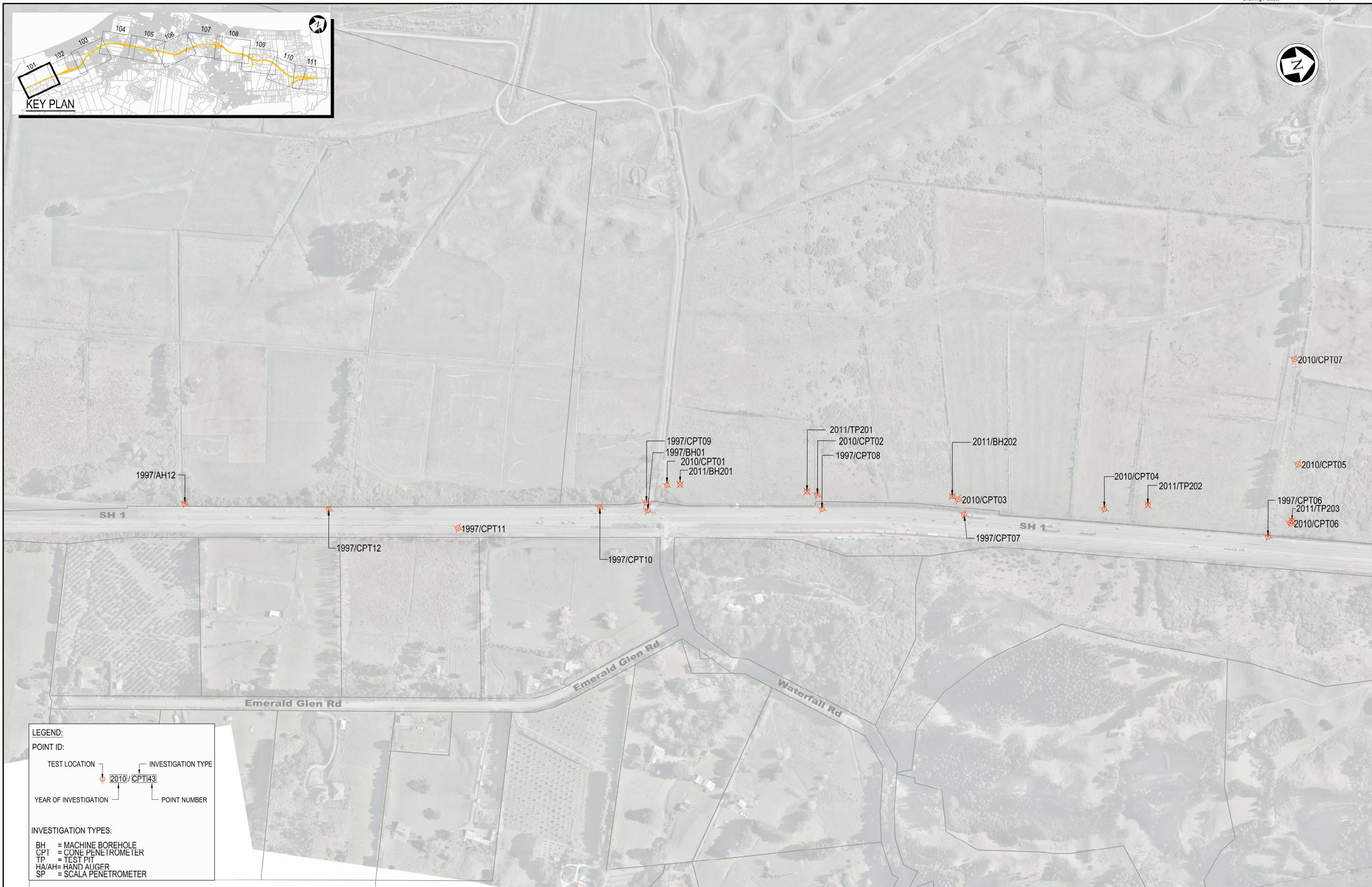
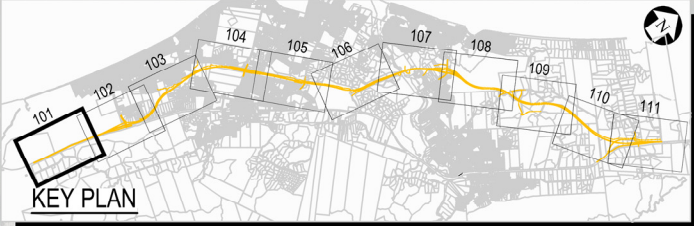
**Status:** - FOR CONSENTING

**Document ID:** M2PP-AEE-DWG

**Drawing No:** GT-GI-100

**Rev:** 1





**LEGEND:**

**POINT ID:**

TEST LOCATION: 2010/CPT43

INVESTIGATION TYPE: CPT

YEAR OF INVESTIGATION: 2010

POINT NUMBER: 43

**INVESTIGATION TYPES:**

- BH = MACHINE BOREHOLE
- CPT = CONE PENETROMETER
- TP = TEST PIT
- HA/AH= HAND AUGER
- SP = SCALA PENETROMETER

NOTES:

Original Scale (A3)

1	AEE LODGEMENT	NRN	15.03.12
Revision:	Amendment	Approved:	Date:



**Project:** MACKAYS TO PEKA PEKA EXPRESSWAY

**Title:** GEOTECHNICAL INVESTIGATION LOCATIONS SHEET 1 OF 11

Status: - FOR CONSENTING

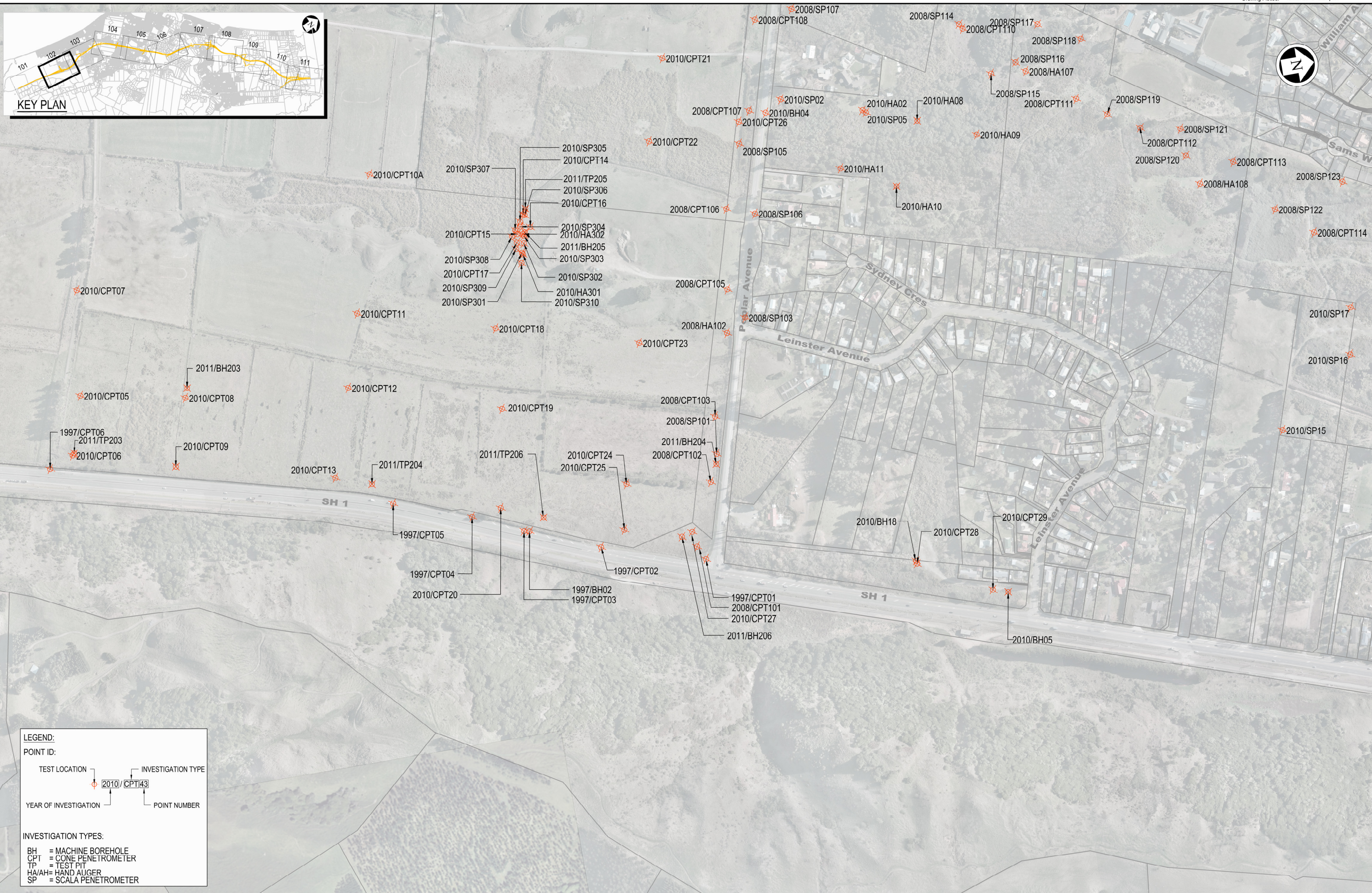
Document ID: M2PP-AEE-DWG Rev:

Drawing No: GT-GI-101 1





KEY PLAN



**LEGEND:**

**POINT ID:**

TEST LOCATION: 2010 / CPT 43

INVESTIGATION TYPE: CPT

YEAR OF INVESTIGATION: 2010

POINT NUMBER: 43

**INVESTIGATION TYPES:**

- BH = MACHINE BOREHOLE
- CPT = CONE PENETROMETER
- TP = TEST PIT
- HA/AH= HAND AUGER
- SP = SCALA PENETROMETER

NOTES:

Original Scale (A3)

1	AEE LODGEMENT	NRN	15.03.12
Revision:	Amendment	Approved:	Date:



Project: **MACKAYS TO PEKA PEKA EXPRESSWAY**

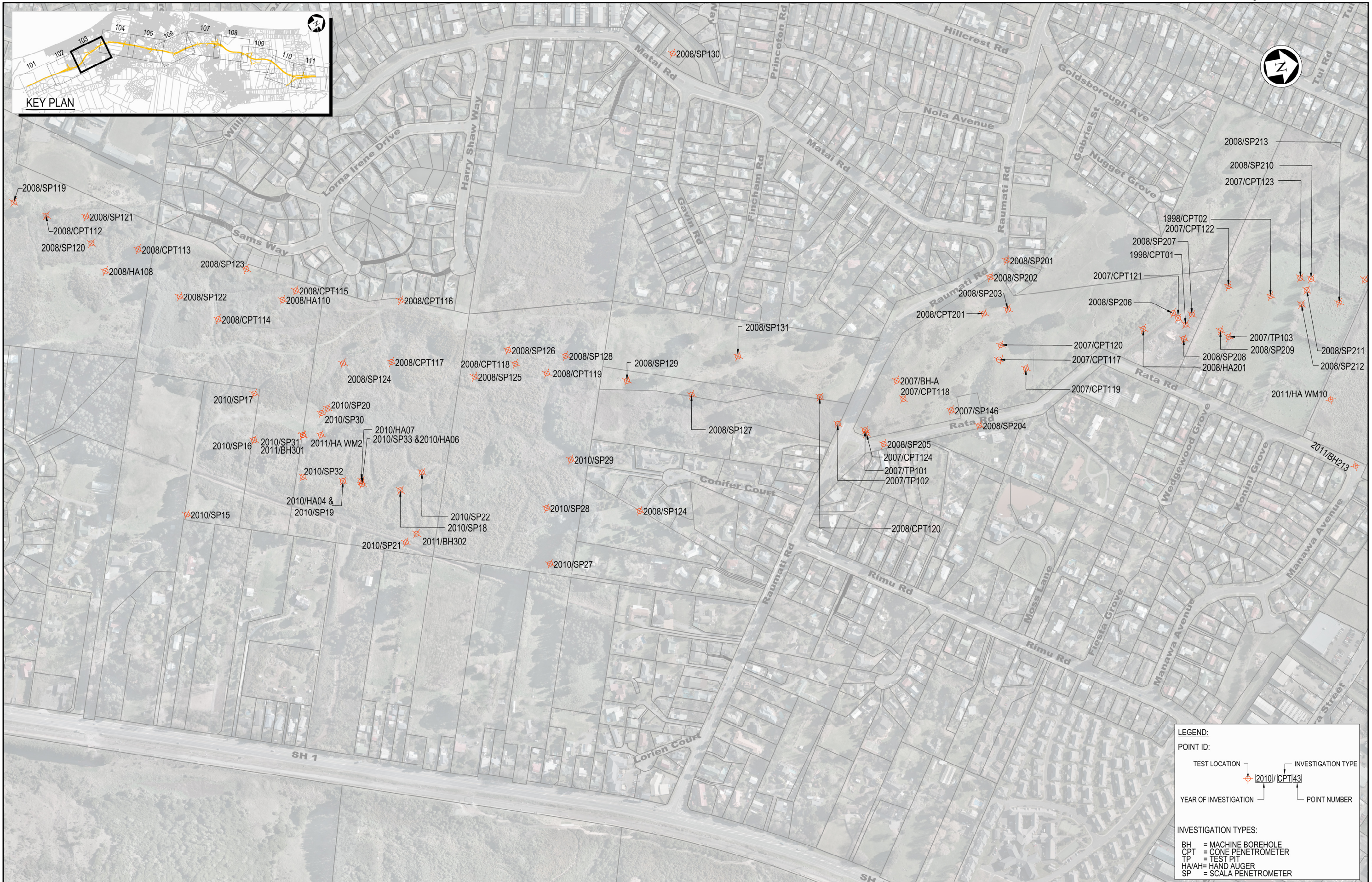
Title: **GEOTECHNICAL INVESTIGATION LOCATIONS SHEET 2 OF 11**

Status: - FOR CONSENTING

Document ID: M2PP-AEE-DWG Rev: 1

Drawing No: **GT-GI-102**





**LEGEND:**

**POINT ID:**

TEST LOCATION INVESTIGATION TYPE

YEAR OF INVESTIGATION POINT NUMBER

**INVESTIGATION TYPES:**

- BH = MACHINE BOREHOLE
- CPT = CONE PENETROMETER
- TP = TEST PIT
- HA/AH = HAND AUGER
- SP = SCALA PENETROMETER

NOTES:

Original Scale (A3)				
1	AEE LODGEMENT	NRN	15.03.12	
Revision:	Amendment	Approved:	Date:	



**Project:** MACKAYS TO PEKA PEKA EXPRESSWAY

**Title:** GEOTECHNICAL INVESTIGATION LOCATIONS SHEET 3 OF 11

Status: - FOR CONSENTING

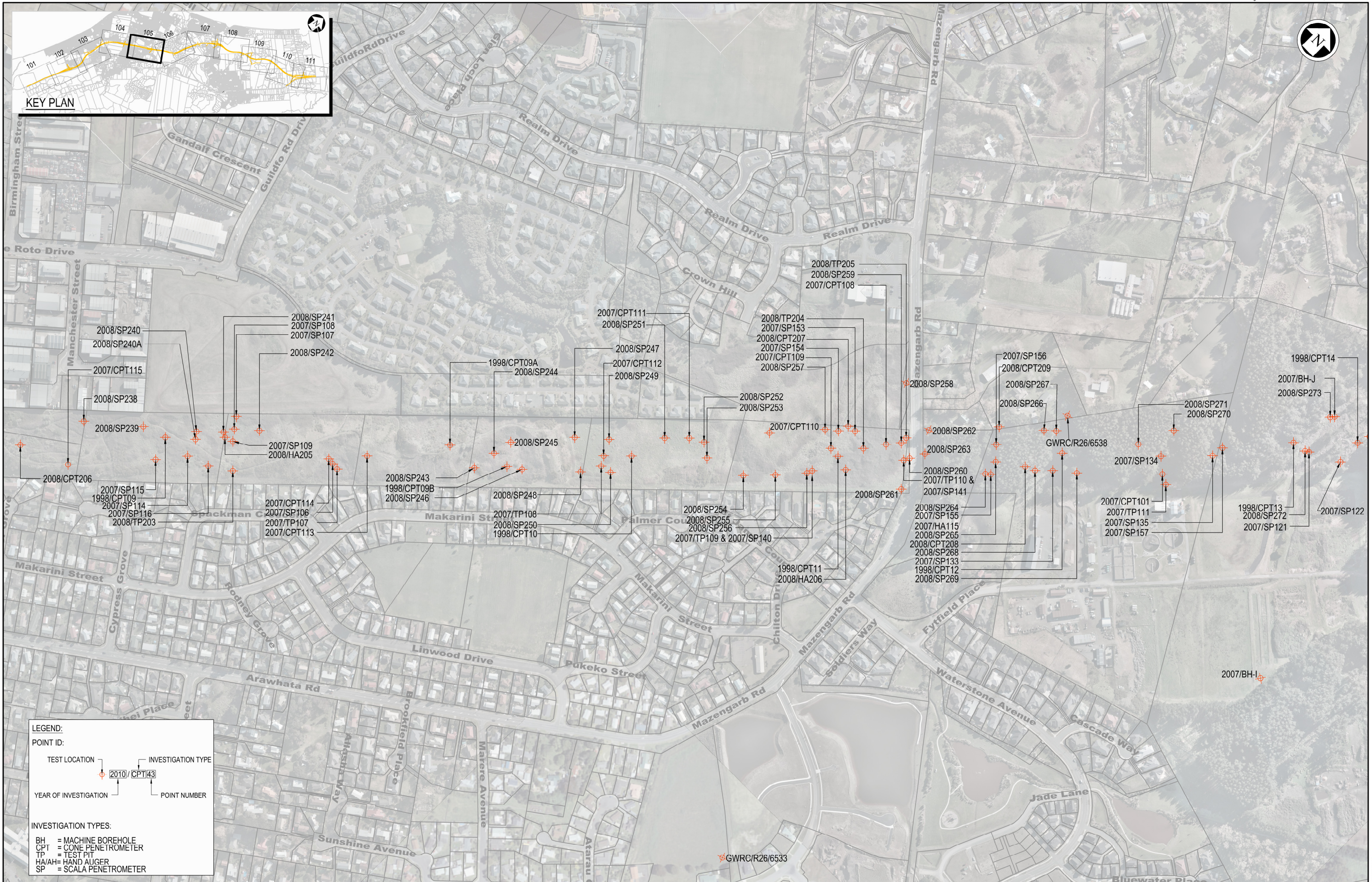
Document ID: M2PP-AEE-DWG Rev: 1

Drawing No: GT-GI-103









**LEGEND:**

**POINT ID:**

TEST LOCATION: 2010/CPT43

INVESTIGATION TYPE: 43

YEAR OF INVESTIGATION: 2010

POINT NUMBER: 43

**INVESTIGATION TYPES:**

- BH = MACHINE BOREHOLE
- CPT = CONE PENETROMETER
- TP = TEST PIT
- HA/AH= HAND AUGER
- SP = SCALA PENETROMETER

NOTES:

Original Scale (A3)

1	AEE LODGEMENT	NRN	15.03.12
Revision:	Amendment	Approved:	Date:



**MACKAYS TO PEKA PEKA EXPRESSWAY**

**GEOTECHNICAL INVESTIGATION LOCATIONS SHEET 5 OF 11**

Status: - FOR CONSENTING

Document ID: M2PP-AEE-DWG Rev: 1

Drawing No: GT-GI-105