

**NOTES:**  
 1. ALL SERVICES SHOWN ARE INDICATIVE ONLY.



**LEGEND: SERVICES**

W	WATER
SS	WASTEWATER
SW	STORMWATER
P	UNDERGROUND POWER
OH	OVERHEAD POWER
HV	TRANSPOWER TRANSMISSION LINES
T	TELECOM
FO	TELECOM FIBRE OPTIC
TC	TELSTRA CLEAR/SATURN
FX	FX NETWORK
G	VECTOR GAS DISTRIBUTION
G	VECTOR GAS TRANSMISSION PIPE CORRIDOR
PP	POWER POLE
WM	WASTEWATER MANHOLE
TP	TRANSMISSION PYLON

NOTES:

Original Scale (A3)					
1	AEE LODGEMENT	NRN	15.03.12		
Revision:	Amendment	Approved:	Date:		



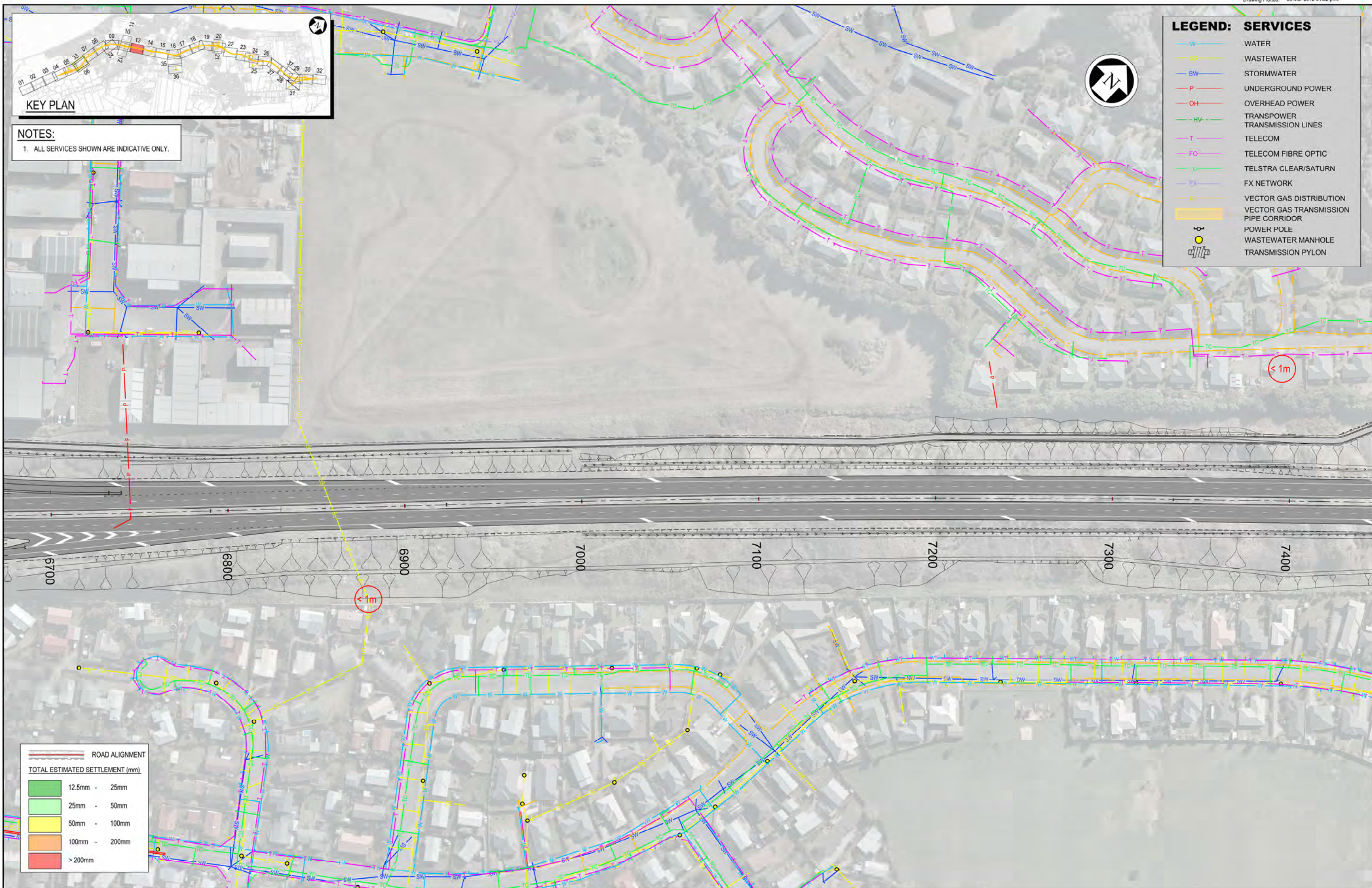
Project: **MACKAYS TO PEKA PEKA EXPRESSWAY**

FOR CONSENTING

Document ID: M2PP-AEE-GWG Rev: 1

GT-SE-212





**KEY PLAN**

**NOTES:**  
1. ALL SERVICES SHOWN ARE INDICATIVE ONLY.

**LEGEND: SERVICES**

W	WATER
SS	WASTEWATER
SW	STORMWATER
P	UNDERGROUND POWER
OH	OVERHEAD POWER
HV	TRANSPOWER TRANSMISSION LINES
T	TELECOM
FO	TELECOM FIBRE OPTIC
TC	TELSTRA CLEAR/SATURN
FX	FX NETWORK
G	VECTOR GAS DISTRIBUTION
G	VECTOR GAS TRANSMISSION PIPE CORRIDOR
●	POWER POLE
○	WASTEWATER MANHOLE
⊥	TRANSMISSION PYLON

**ROAD ALIGNMENT**

**TOTAL ESTIMATED SETTLEMENT (mm)**

Green	12.5mm - 25mm
Light Green	25mm - 50mm
Yellow	50mm - 100mm
Orange	100mm - 200mm
Red	> 200mm

NOTES:

Original Scale (A3)			
1:2000			
1 AEE LODGEMENT	NRN	15.03.12	
Revision: Amendment	Approved:	Date:	

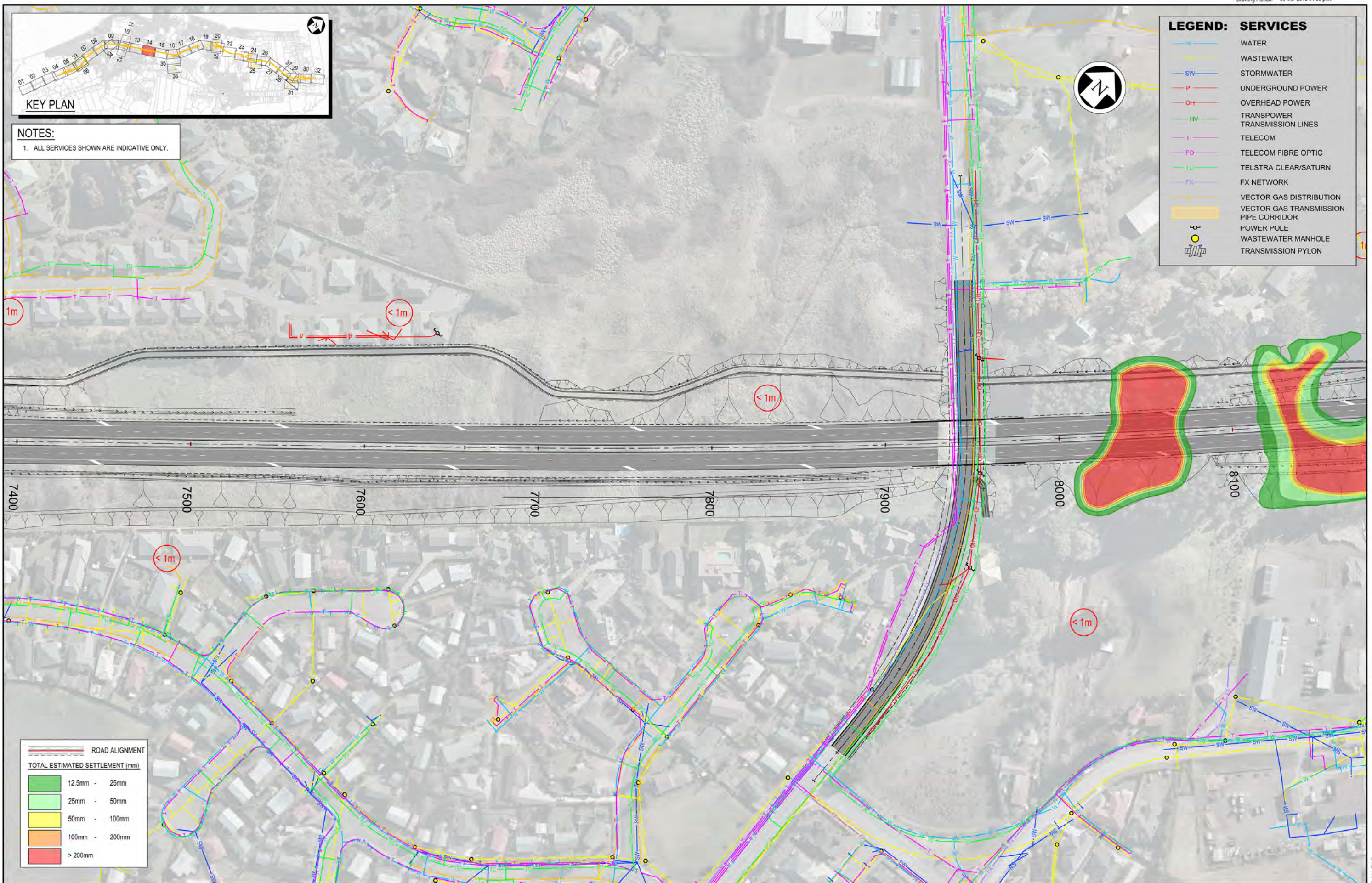


**Project: MACKAYS TO PEKA PEKA EXPRESSWAY**

**EXISTING SERVICES SETTLEMENT CONTOURS**

FOR CONSENTING	
Document ID: M2PP-AEE-GWG	Rev: 1
GT-SE-213	





**NOTES:**  
1. ALL SERVICES SHOWN ARE INDICATIVE ONLY.

**LEGEND: SERVICES**

W	WATER
SS	WASTEWATER
SW	STORMWATER
P	UNDERGROUND POWER
OH	OVERHEAD POWER
HW	TRANSPOWER TRANSMISSION LINES
T	TELECOM
FO	TELECOM FIBRE OPTIC
TC	TELSTRA CLEAR/SATURN
FX	FX NETWORK
G	VECTOR GAS DISTRIBUTION
(Yellow box)	VECTOR GAS TRANSMISSION PIPE CORRIDOR
(Circle with dot)	POWER POLE
(Circle with cross)	WASTEWATER MANHOLE
(Square with cross)	TRANSMISSION PYLON

**ROAD ALIGNMENT**

**TOTAL ESTIMATED SETTLEMENT (mm)**

(Green)	12.5mm - 25mm
(Light Green)	25mm - 50mm
(Yellow)	50mm - 100mm
(Orange)	100mm - 200mm
(Red)	> 200mm

NOTES:

Original Scale (A3)				
1:2000				
1 AEE LODGEMENT	NRN	15.03.12		
Revision: Amendment	Approved:	Date:		



**MACKAYS TO PEKA PEKA EXPRESSWAY**

EXISTING SERVICES SETTLEMENT CONTOURS

FOR CONSENTING	
Document ID: M2PP-AEE-GWG	Rev: 1
GT-SE-214	

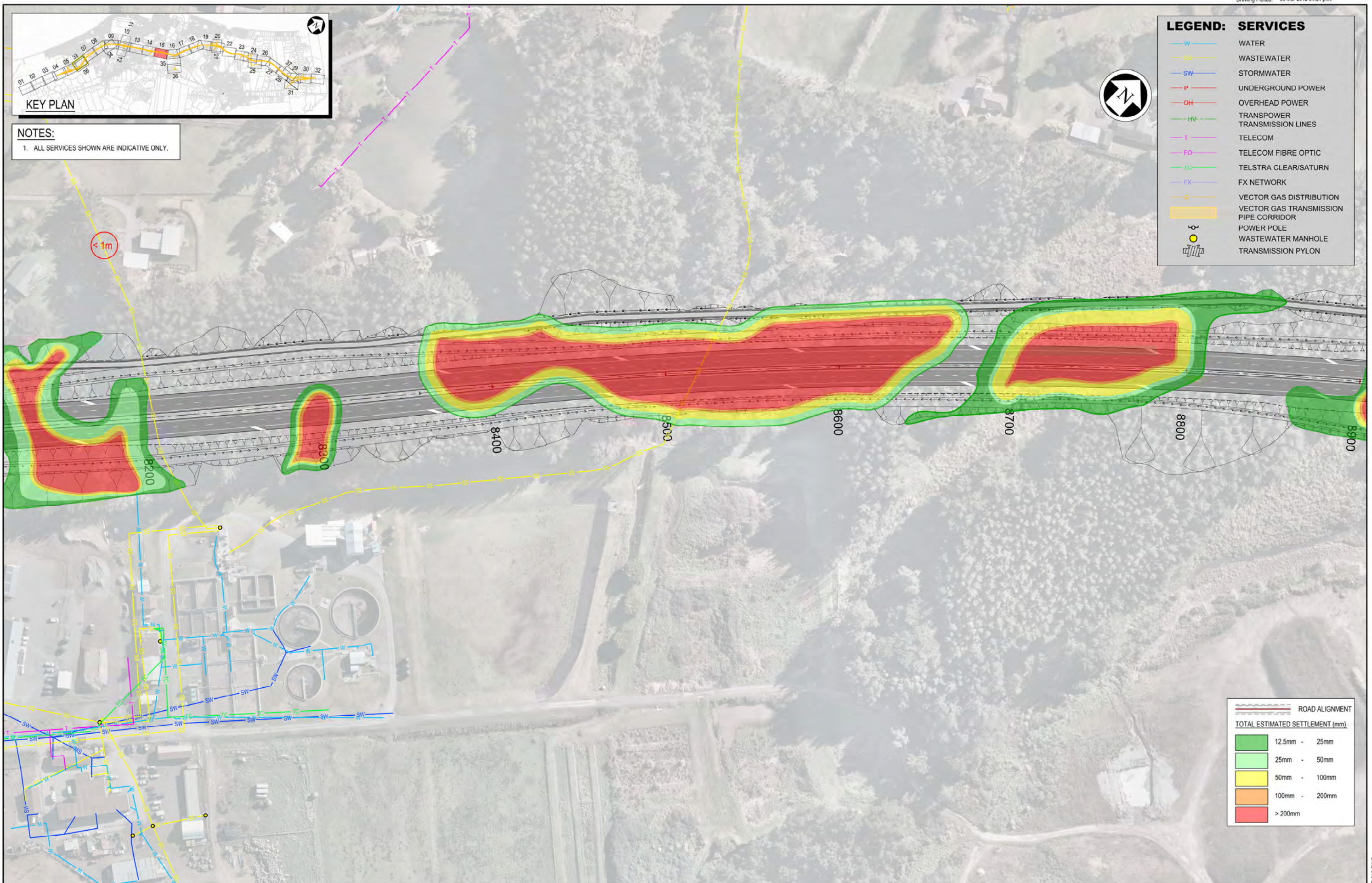




**NOTES:**  
1. ALL SERVICES SHOWN ARE INDICATIVE ONLY.

**LEGEND: SERVICES**

- W WATER
- SS WASTEWATER
- SW STORMWATER
- P UNDERGROUND POWER
- OH OVERHEAD POWER
- HV TRANSMISSION LINES
- T TELECOM
- FO TELECOM FIBRE OPTIC
- TC TELSTRA CLEAR/SATURN
- FX FX NETWORK
- G VECTOR GAS DISTRIBUTION
- VECTOR GAS TRANSMISSION PIPE CORRIDOR
- POWER POLE
- WASTEWATER MANHOLE
- TRANSMISSION PYLON



ROAD ALIGNMENT	
TOTAL ESTIMATED SETTLEMENT (mm)	
	12.5mm - 25mm
	25mm - 50mm
	50mm - 100mm
	100mm - 200mm
	> 200mm

NOTES:

Original Scale (A3)			
1:2000			
1 AEE LODGEMENT	NRN	15.03.12	
Revision: Amendment	Approved:	Date:	



**Project: MACKAYS TO PEKA PEKA EXPRESSWAY**

**EXISTING SERVICES SETTLEMENT CONTOURS**

Date: FOR CONSENTING

Document ID: M2PP-AEE-GWG Rev: 1

Project No: **GT-SE-215**

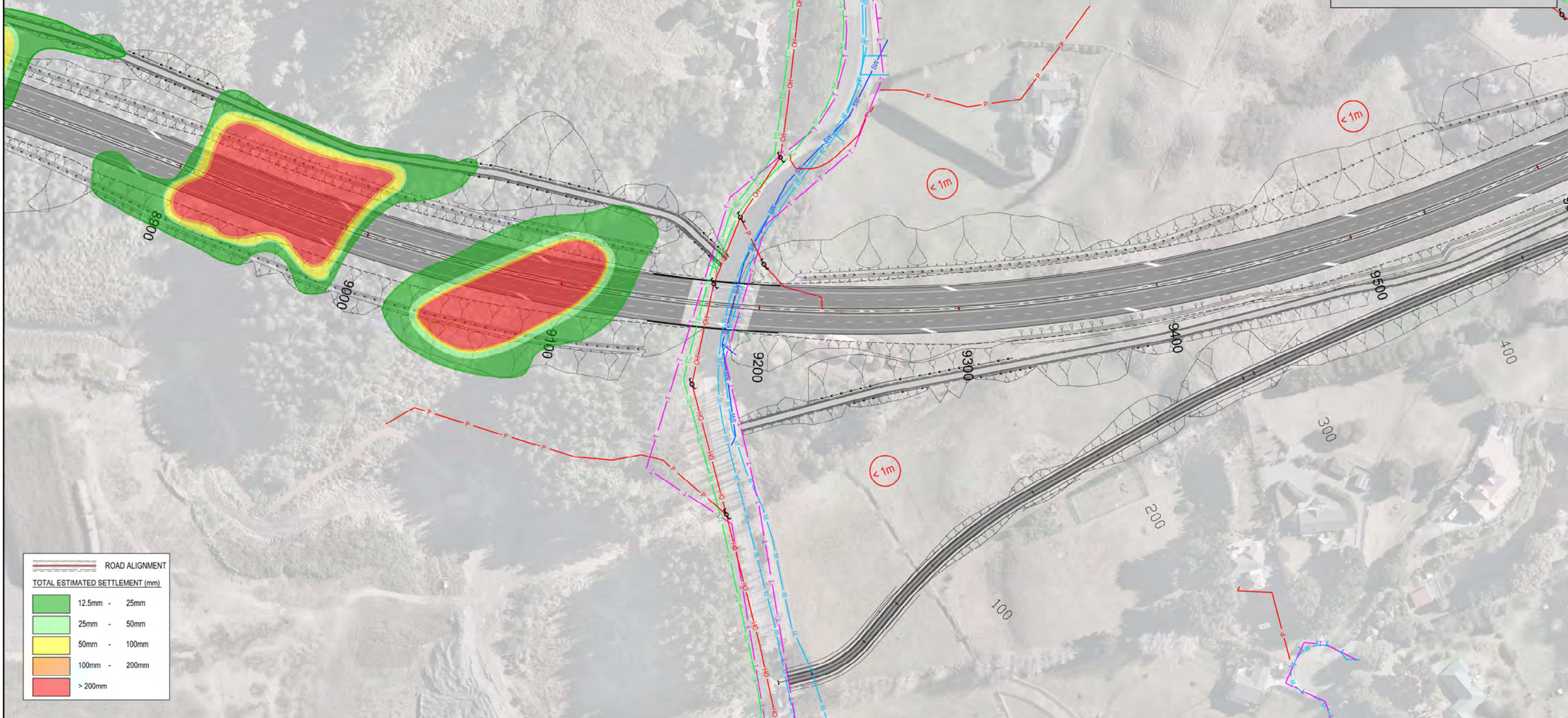




**NOTES:**  
1. ALL SERVICES SHOWN ARE INDICATIVE ONLY.

**LEGEND: SERVICES**

- W WATER
- SS WASTEWATER
- SW STORMWATER
- P UNDERGROUND POWER
- OH OVERHEAD POWER
- HV TRANSPOWER TRANSMISSION LINES
- T TELECOM
- FO TELECOM FIBRE OPTIC
- TC TELSTRA CLEAR/SATURN
- FX FX NETWORK
- G VECTOR GAS DISTRIBUTION
- VECTOR GAS TRANSMISSION PIPE CORRIDOR
- POWER POLE
- WASTEWATER MANHOLE
- TRANSMISSION PYLON



ROAD ALIGNMENT	
TOTAL ESTIMATED SETTLEMENT (mm)	
	12.5mm - 25mm
	25mm - 50mm
	50mm - 100mm
	100mm - 200mm
	> 200mm

NOTES:

Original Scale (A3)	1:2000
1 AEE LODGEMENT	NRN 15.03.12
Revision: Amendment	Approved: Date:



Project: **MACKAYS TO PEKA PEKA EXPRESSWAY**

FOR CONSENTING

Document ID: M2PP-AEE-GWG Rev: 1

Planning No: **GT-SE-216**