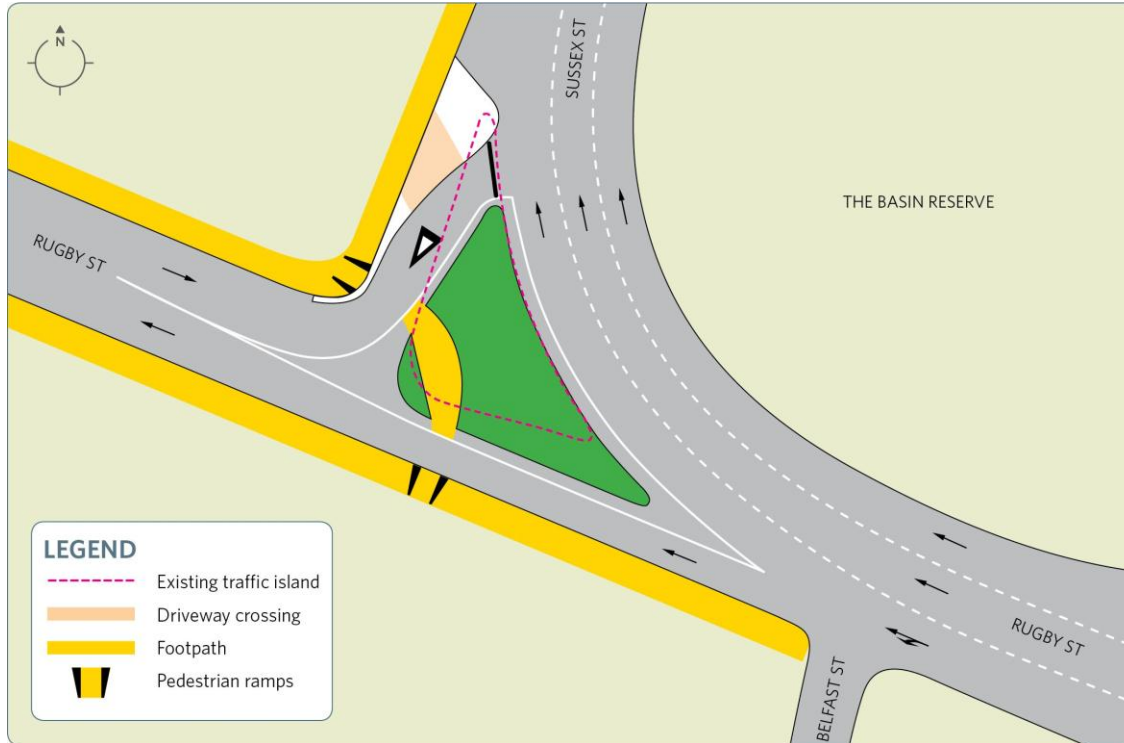




Safety upgrade starts for Rugby St intersection



Safety for both pedestrians and motorists is at the heart of the upgrade of the Rugby and Sussex Streets intersection due to start on Monday 9 September. We expect the upgrade to take about three weeks, weather permitting.

The upgrade will include realigning the exit from upper Rugby Street on to Sussex Street (State Highway 1). The central traffic island will shift further south and a second island will be built out from the kerb.

- The shift will allow motorists exiting upper Rugby Street a better view of the oncoming traffic.
- Oncoming traffic will have a better view of vehicles using the exit.
- Pedestrians will have new concrete ramps from each kerb and a concrete path at road level across the central traffic island. Tactile pavers will mark the exit and entry points.
- Neighbouring residents will have a concrete driveway through the new island. We are contacting residents who will be affected by the new traffic island to discuss the driveway crossing being installed for their use.

What to expect

Start

Monday 9 September

Finish

Early October

Work hours

7.00am – 5.00pm

Day work

Concrete cutting, excavating and laying pavement using digger and trucks.

Night work

Closer to October, some night work to resurface the road. Dates and times will be advised.

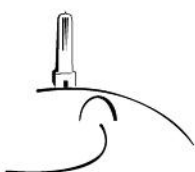
Traffic delays

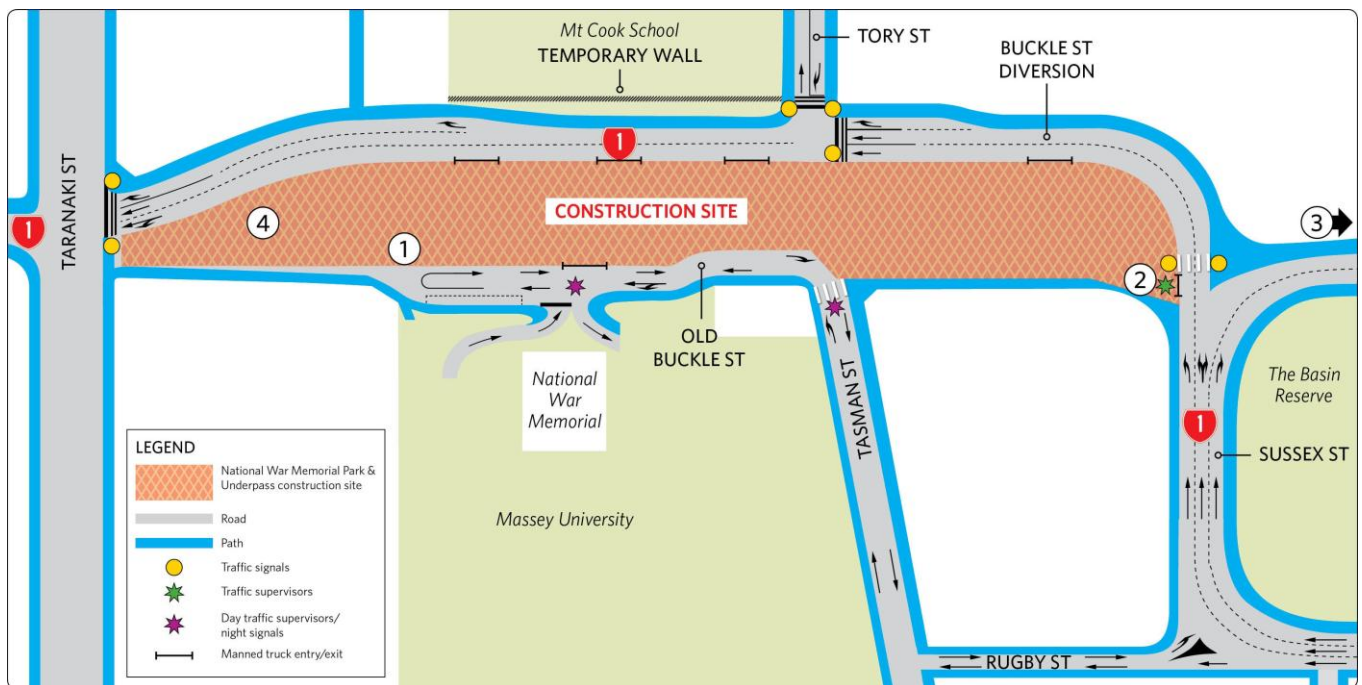
Minor delays for traffic exiting on to Sussex Street.

Pedestrians

Footpaths will be rerouted around the works.

Thank you for your patience while this safety work is underway.





Old Buckle Street

① **From Taranaki Street end:** A stormwater pipeline is being installed above the underpass trench to take water from local roads and the future park. Installation is progressing from Taranaki Street and will soon reach as far as Mount Cook Police Barracks.

A new water main is being installed in the same trench from Taranaki Street to Sussex Street. It replaces the old water main which used to run through the underpass site.

② **From Sussex Street end:** A stormwater pipe is being installed by The Basin Reserve Apartments. This will link up with the stormwater pipeline being installed above the underpass at Tasman Street.

- Minor disruption to traffic and pedestrians on Tasman and Old Buckle Street will be managed by traffic wardens.

③ Cambridge Terrace



Manhole chamber at Cambridge Terrace. A valve is being installed in the manhole which is why it is so big.

The stormwater pipeline that will run from the Memorial Park Underpass is being connected through a manhole chamber beside the footpath on Cambridge Terrace near The Basin Reserve.

- Minor inconvenience for pedestrians this week.

Ongoing work

④ Taranaki Street end (west)

Installing piles for underpass – the first of about 140 piles.

- Concrete trucks at the Taranaki Street end of the site most days.
- Exit and entry points will be manned by traffic wardens.

All of site

Continuing trench excavation – 80% complete.

Installing ground anchors for retaining walls – 60 left to install of a total 558.

- Anchor crew works 6.00am – 8.00pm. Generator lighting will be turned off when they finish.

General site work hours

Mon – Fri: 6.00am–6.00pm

Noisy work after 7.00am

Sat: 7.00am – 2.00pm

Noisy work after 8.00am

We try to give our neighbours a timely warning of activities they may find disruptive. However, some activities may occur at short notice as the work programme is adapted to optimise progress.

