

National War Memorial Park and Underpass



Underpass taking shape with concrete construction nearing completion

Progress on the trench and underpass

Concrete walls: The last of 28 wall slabs was poured on Monday 12 May. These are linked to the concrete floor and roof of the underpass by steel reinforcing. Precast facing-wall panels will now be installed at each end of the trench beyond the underpass portals.

Concrete floor slabs: 21 pours have been done, with 2 to go. Completion is likely by the end of May.

130m underpass concrete roof: 10 pours have been done, with 4 to go. Completion is likely by early June.

Progress on relocation of the Home of Compassion Crèche

A 3-stage move will take place using hydraulics to pull and lift the crèche. The first stage will take place the week of 19 May and will involve sliding the crèche on runners to the back of its current site. From June to July, it will be lifted up 3m, then finally it will slide to its new site on a higher level near the Te Papa Archives building. The Alliance will restore the exterior of the crèche which will become a feature of the National War Memorial Park.

Governor-General visits



Alliance Manager Duncan Kenderdine, right, outlines some finer details for Sir Jerry Mataparae during his recent visit to the site.



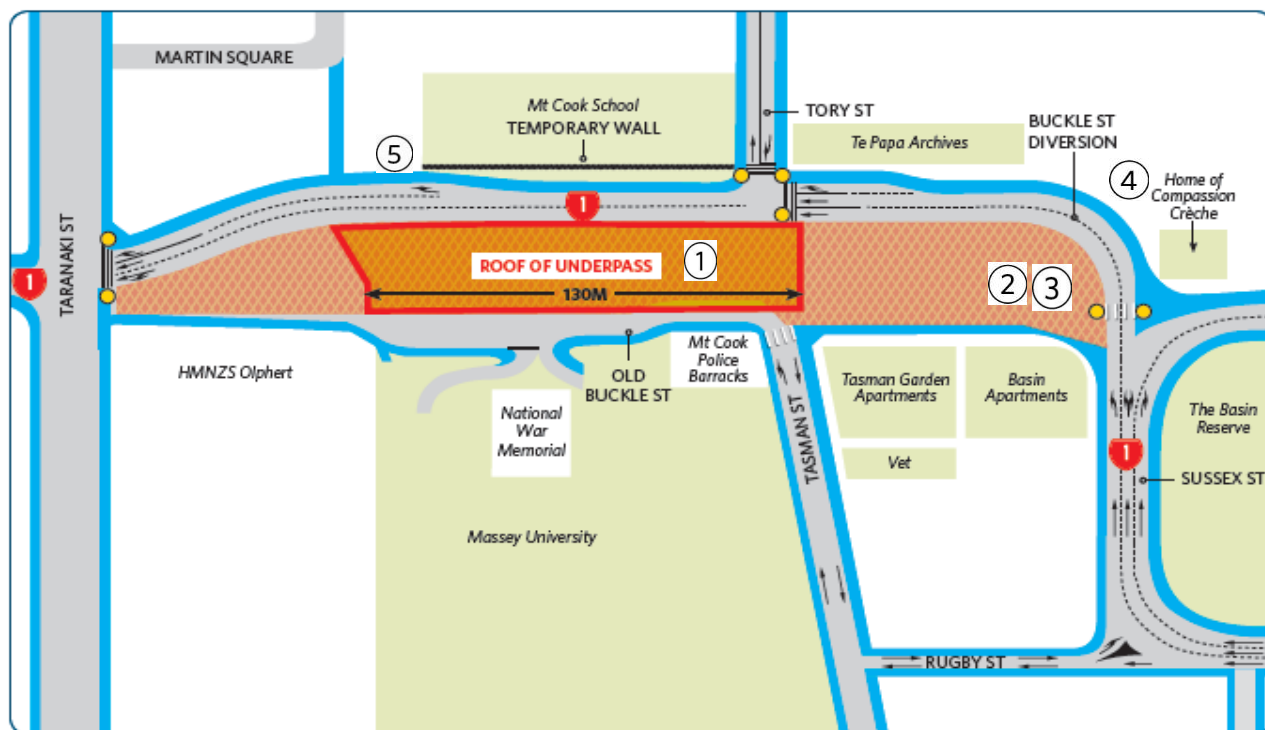
Sir Jerry Mataparae enjoys a chat with some of the Alliance site.

Blessing the stone at Home of Compassion Crèche



Local iwi kaumatua Peter Jackson blesses the symbolic foundation stone at the site where the crèche will be relocated in June. The crèche with scaffolding is in the background.

What's happening around the project site



Underpass concreting

① Roof

The next concrete roof pours are scheduled for **the week of 19 May**, days yet to be decided.

- **Early morning pours** – trucks arrive from 5.00am.

② Floor

The next concrete floor pour is scheduled for **either Thursday or Friday** morning this week.

- **An early morning pour** – trucks arrive from 5.00am.

③ Walls

The final concrete wall pour took place on Monday 12 May during daylight hours.

- Precast facing-wall panels are now being installed at each end of the trench.

④ Home of Compassion Crèche

- Work continues on the crèche retaining wall by Mitsubishi Motors, including compacting of the ground.
- Final preparations are being made for sliding the crèche to the rear of its current site.

Park construction

⑤ Northwestern perimeter

Construction is taking place in the area between the Buckle Street Diversion road on one side and the site office, tunnel control room and Mt Cook School on the other.

- Underground ducts are being installed, including for park lighting and control systems for the tunnel.
- **The ground is being compacted by an 8-tonne vibrating roller, likely to continue to the end of May.**

The vibration will be felt by people in the nearby buildings but will not harm foundations. However, it is vital for providing a firm base for park construction.

General site work hours

Mon – Fri: 6.00am–6.00pm

Noisy work after 7.00am

Sat: 7.00am – 2.00pm

Noisy work after 8.00am

We try to give our neighbours a timely warning of activities they may find disruptive. However, some activities may occur at short notice as the work programme is adapted to optimise progress.

Contact us