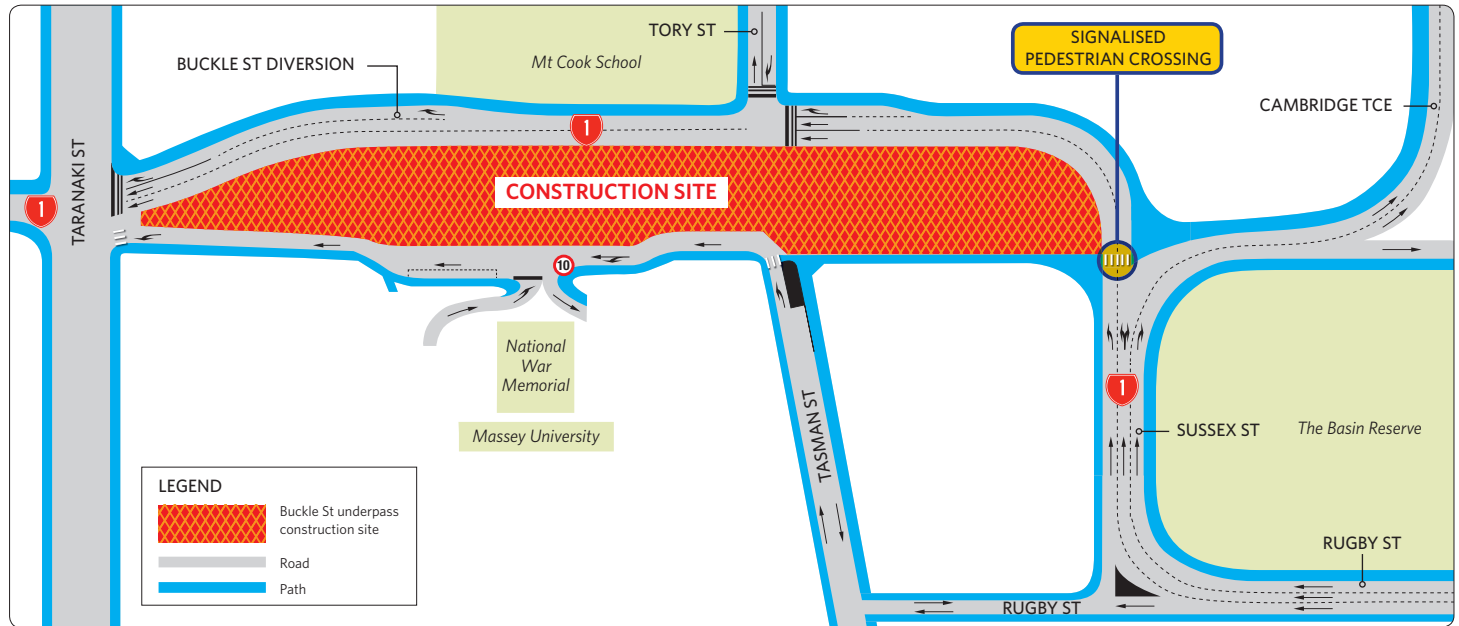


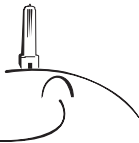
# Stage 2: Buckle Street underpass closures and diversions

## 25 January 2013 – SH1 Diversion route opens and Tasman Street closes

Buckle Street traffic will be moved to the new SH1 diversion route. Tory Street will re-open and connect to the new diversion. Tasman Street will be closed at the Buckle Street end until late 2014 when the new underpass is expected to be open for use.



Memorial Park Alliance



### Our contact details

Ph: 0800 020 086

Email: [memorial.park@nzta.govt.nz](mailto:memorial.park@nzta.govt.nz)

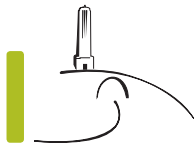
[www.nzta.govt.nz/memorial-park](http://www.nzta.govt.nz/memorial-park)

New Zealand Government

# Stage 2: Alternative vehicle routes



Memorial Park Alliance



## Our contact details

Ph: 0800 020 086

Email: [memorial.park@nzta.govt.nz](mailto:memorial.park@nzta.govt.nz)

[www.nzta.govt.nz/memorial-park](http://www.nzta.govt.nz/memorial-park)

New Zealand Government