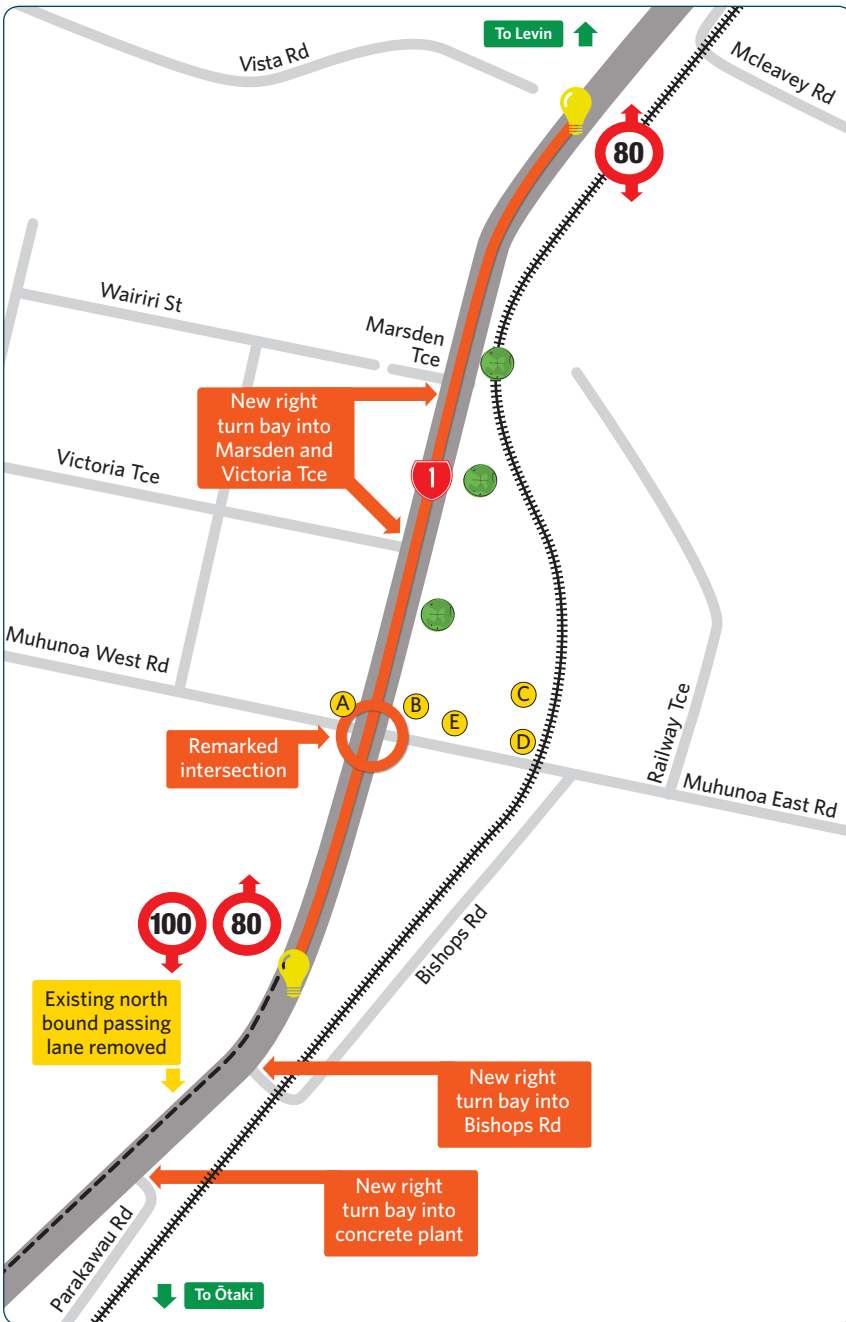




Ohau Safety Improvement Project



LEGEND	
Existing SH1	
Road with new painted median and shoulders	
Passing lane removed	
Pedestrian underpass	
Cafe	
School	
Rail underpass	
Historic Church	
Proposed 80km/h speed limit and new township threshold treatment	
New street lighting to be provided between thresholds	
New landscaped area on side of road	

