

1

# Wellington Northern corridor

## Ōtaki to North of Levin section

### Manakau

The package of work in and around Manakau Township covers the 1km stretch of SH1 from south of Honi Taipua Street to north of Waikawa Beach Road. It connects with three local roads – Honi Taipua Street, Mokena Kohere Street and Waikawa Beach Road. The rail line runs to the east and the land has been developed on both sides of the road.

#### Why do we need to improve this section of SH1?

Safety is a key issue for this section of SH1. There have been 16 crashes in the five year period between July 2007 and June 2012, the majority of them from a car being rear ended. At their worst these crashes caused minor injuries, however, there is a more serious crash history that lies outside the five year period, including one fatality in 2000 and a serious crash in 2012 where a car hit a pole.

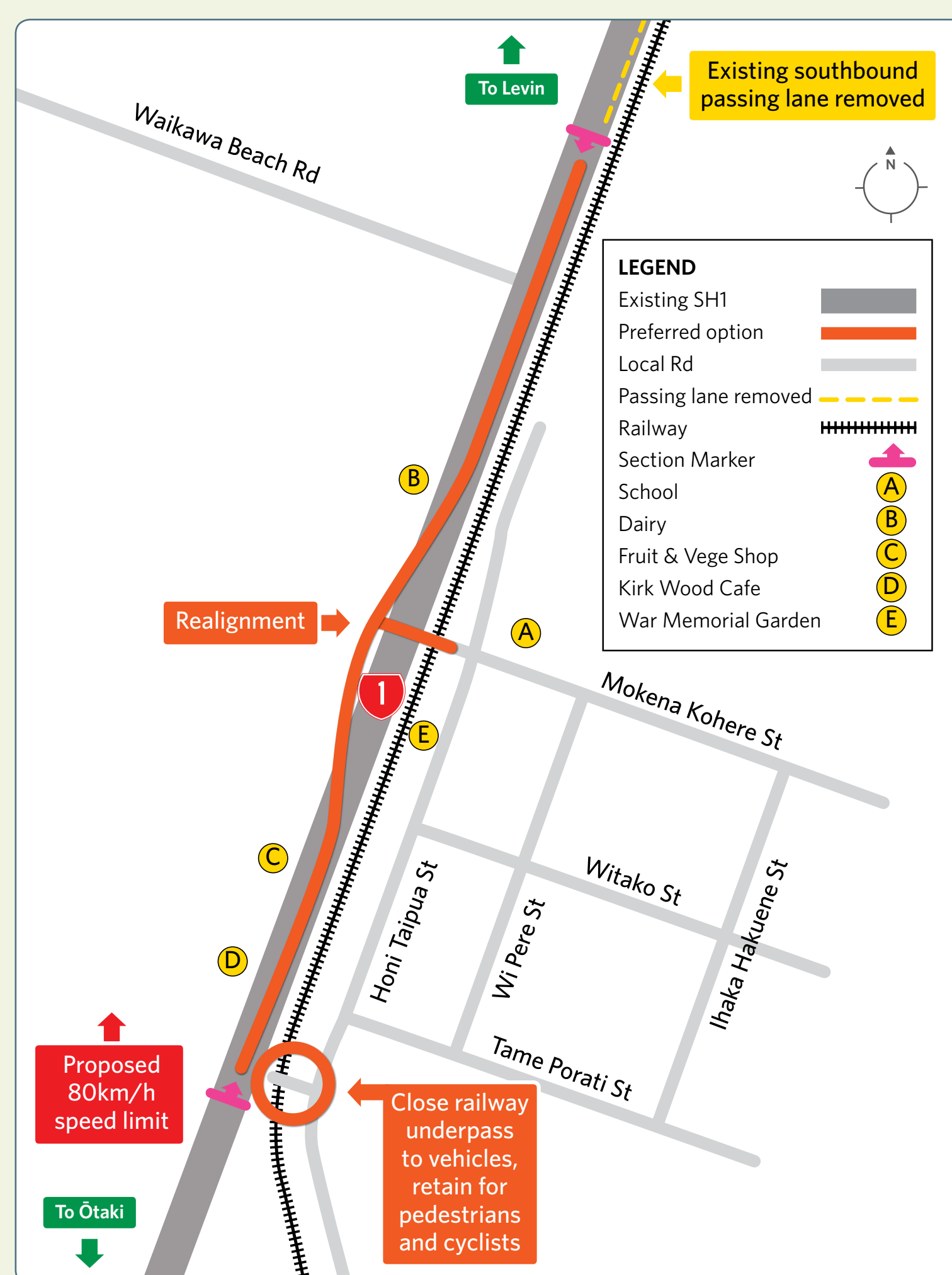
A key consideration here is how to improve safety for SH1 users and maintain local network connections to and across the state highway through Manakau Township. Issues include:

- A 100km/h speed limit through the township and at the end of the southbound passing lane
- Speeding problems caused by the southbound passing lane stopping shortly before the township
- No pedestrian or cycling facilities
- Issues with side roads and side friction
- Commercial development and off-road parking availability
- Movements across SH1 from the township to the shops, particularly the dairy
- Increasing volumes of heavy vehicles/freight
- Not enough space between the railway line limit and the state highway for heavy vehicles to wait before connecting with the highway
- Not enough space for vehicles to wait to turn left onto Mokena Kohere Street when rail crossing barriers are down, leaving them exposed to traffic having just merged at the end of the passing lane
- Cross section (turning movements and pedestrian/cycle provision)
- Waikawa Beach Road intersection is located 125m before the end of the passing lane, posing a risk to people waiting to turn right and to overtaking vehicles
- Steep shoulder to the south of and opposite Honi Taipua Street
- Power poles close to the road, particularly opposite Honi Taipua Street on a steep shoulder.

#### How do we propose to address these issues?

In order to make this section safer and more efficient, we propose to:

- Reduce the speed limit through Manakau to 80km/h
- Install threshold treatments at either end of the township to alert road users they are travelling through a different environment (see visualisation of how this might look to the right).
- Widen the highway, create a painted median strip and provide a wider road edge
- Remove the southbound passing lane, which ends north of Manakau
- Realign the road and create more waiting space on Mokena Kohere Street for heavy vehicles between the highway and railway tracks
- Close the railway underpass to traffic as there isn't enough space to provide a safe intersection for traffic turning right
- Reuse the railway underpass as a pedestrian/cyclist/ equestrian only access
- Pedestrian and cycle improvements
- Relocate power and lighting poles, which are a roadside hazard that someone may crash into.



These proposals are connected to our proposals to the north for the section between Manakau to Ohau Bridges. It will be beneficial to consider both projects in tandem.

#### How changes will affect the community and the way you travel

A slower speed limit of 80km/h may make travel time longer, but this limit is considered appropriate for a rural township, particularly as it will provide other safety benefits. Intersections with the highway will be improved, ensuring the way people move to and through the Manakau community are both safe and efficient.

Issues to consider include:

- Property impacts – we may need to purchase property to provide the wider road space
- Property access – we may need to change how some properties access SH1
- Travel speed – changing the speed limit could increase travel time
- Intersection changes – we will need to change the layout at the railway underpass intersection, and on Mokena Kohere Street
- Safety adjustments – we may need to change where and how you turn on to or from the highway and where it is safest to park on the roadside.

#### Questions to consider in your feedback

What are your thoughts about our proposals?

What sort of intersection layout will allow you to stay connected with your community?

How do you feel about connections to the state highway being spread further apart?

What pedestrian and cyclist issues should we be aware of?

Is there anything else at this location that we should consider?



An artists' impression of how the entry to Manakau Township could be modified.



Looking south, this is the area where our proposal would realign the road to give more waiting space on Mokena Kohere Street (intersection visible on the left).