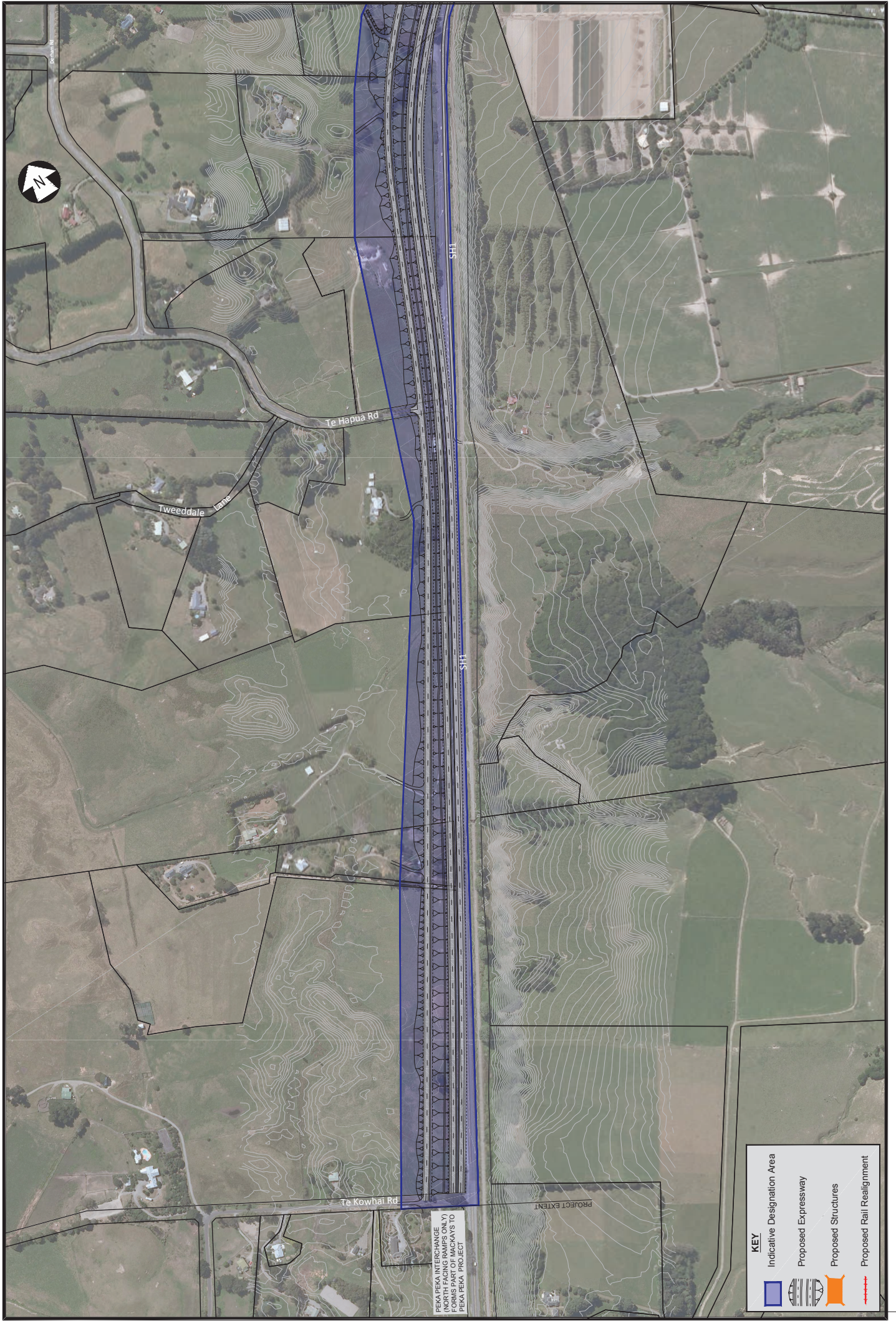



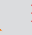


Appendix D: Project Areas



PEKA PEKA INTERCHANGE (NORTH FACING RAMP) AS TO PEKA PEKA PROJECT

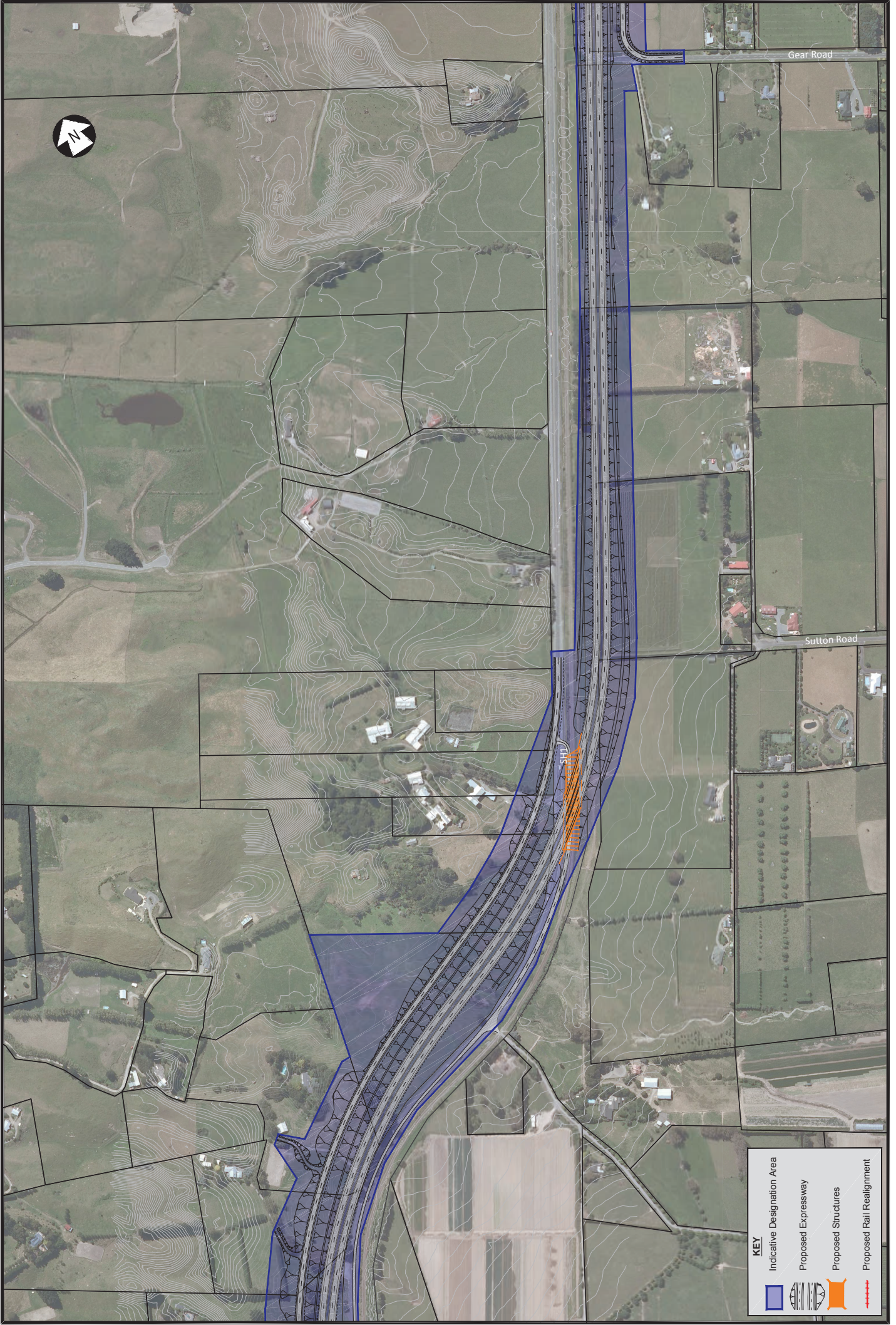
KEY

-  Indicative Designation Area
-  Proposed Expressway
-  Proposed Structures
-  Proposed Rail Realignment

1:2000
@ 1m
0 40 80 120 160 200 240 m

PEKA PEKA TO OTAKI EXPRESSWAY PROJECT - PEKA PEKA ROAD
JUNE 2012 AERIAL ROUTE MAP

15/09/2012 14:49



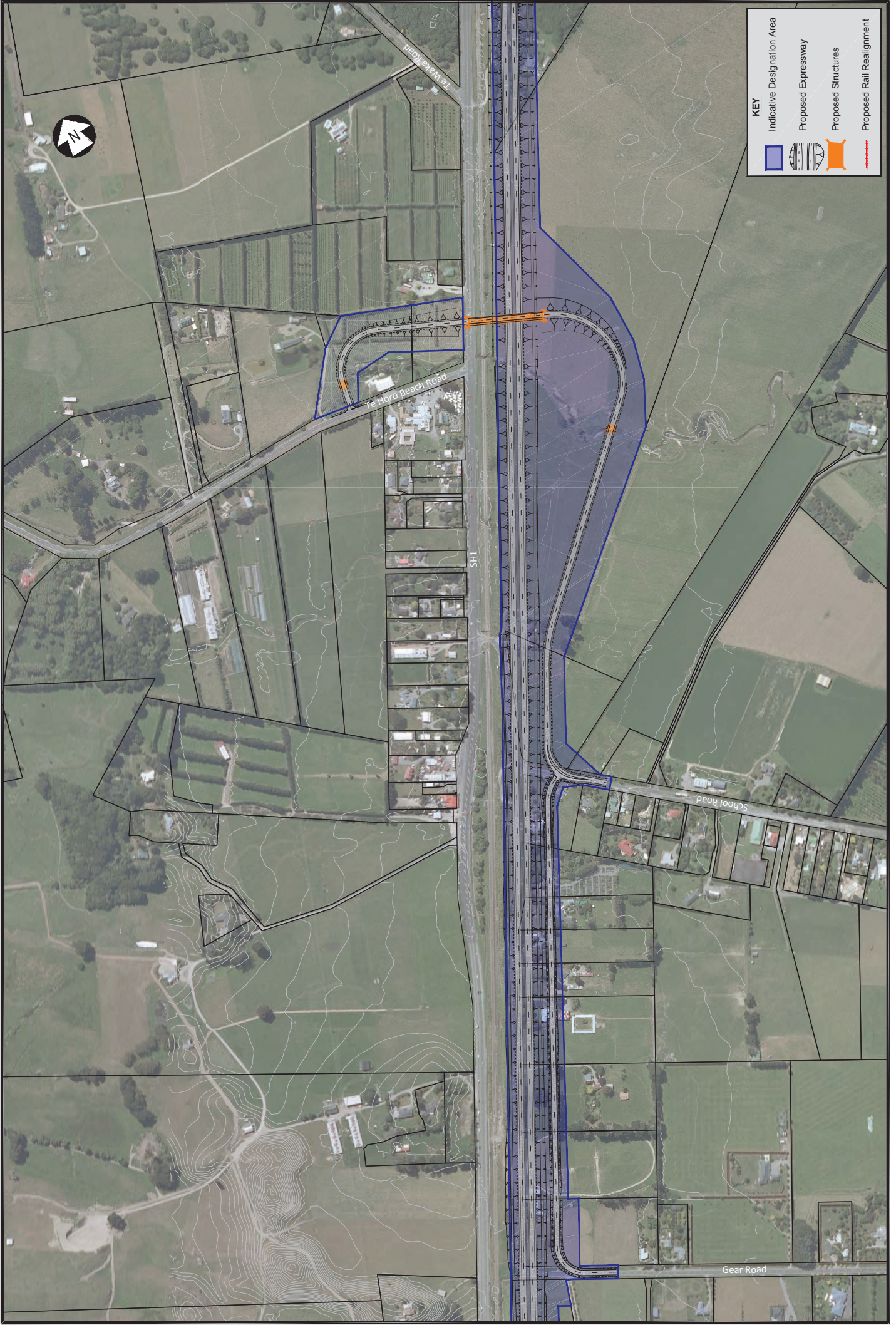
15/08/2012 14:52

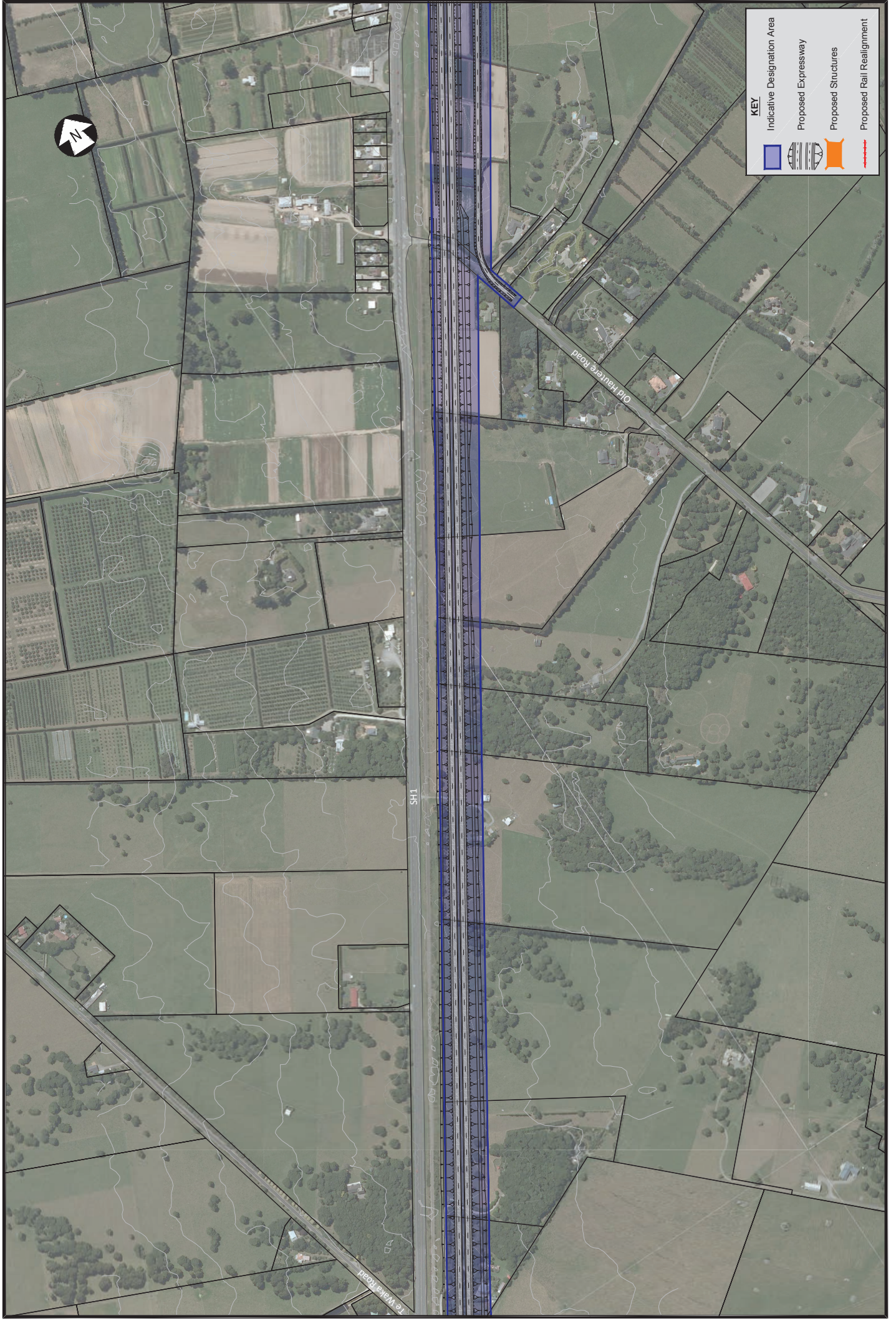
1:2000
@ 1m
0 40 80 120 160 200 240 m

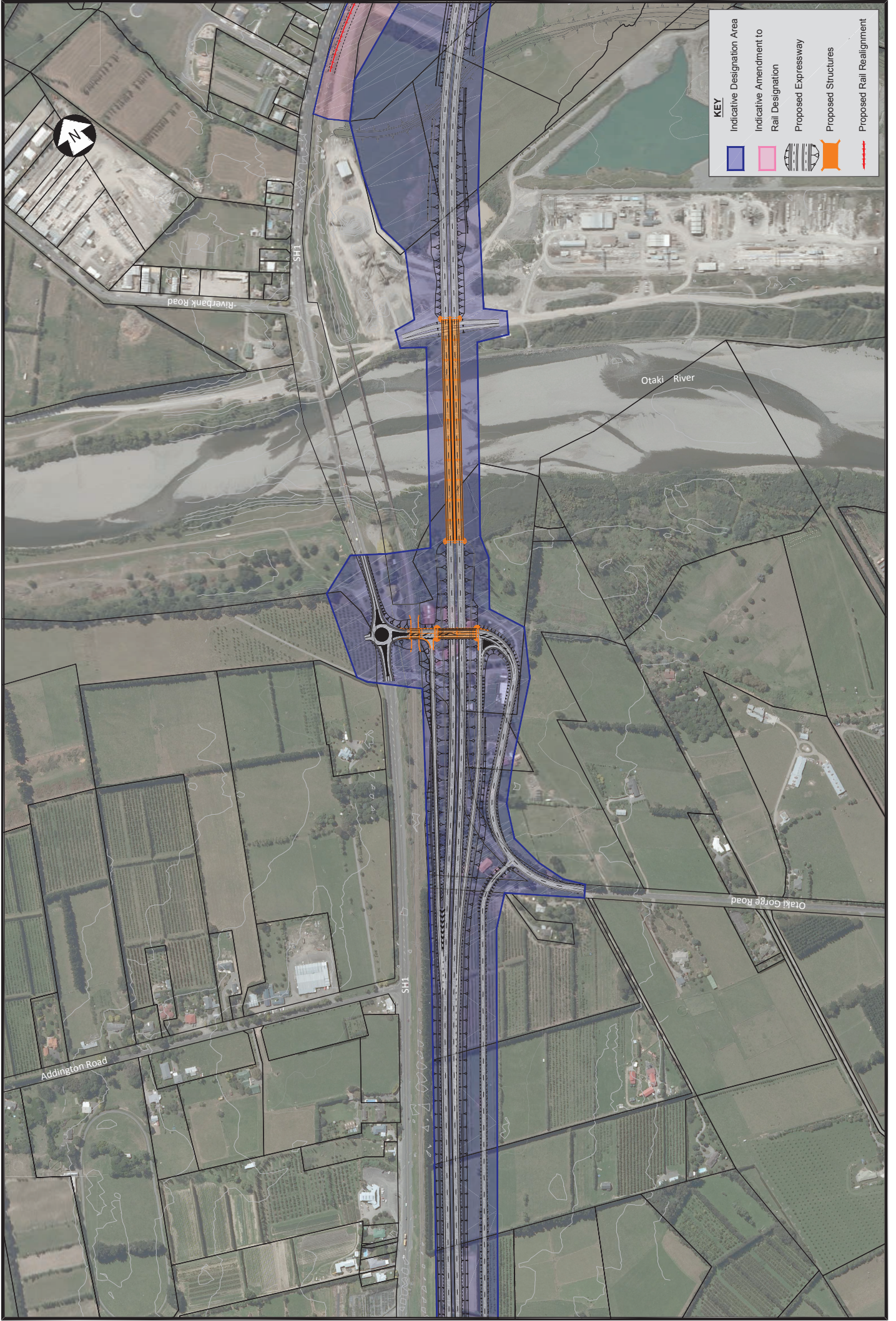
AERIAL PHOTOGRAPHY FLOWN - MARCH 2010

PEKA PEKA TO OTAKI EXPRESSWAY PROJECT - MARY CREST
JUNE 2012 AERIAL ROUTE MAP






SHEET 2 OF 7







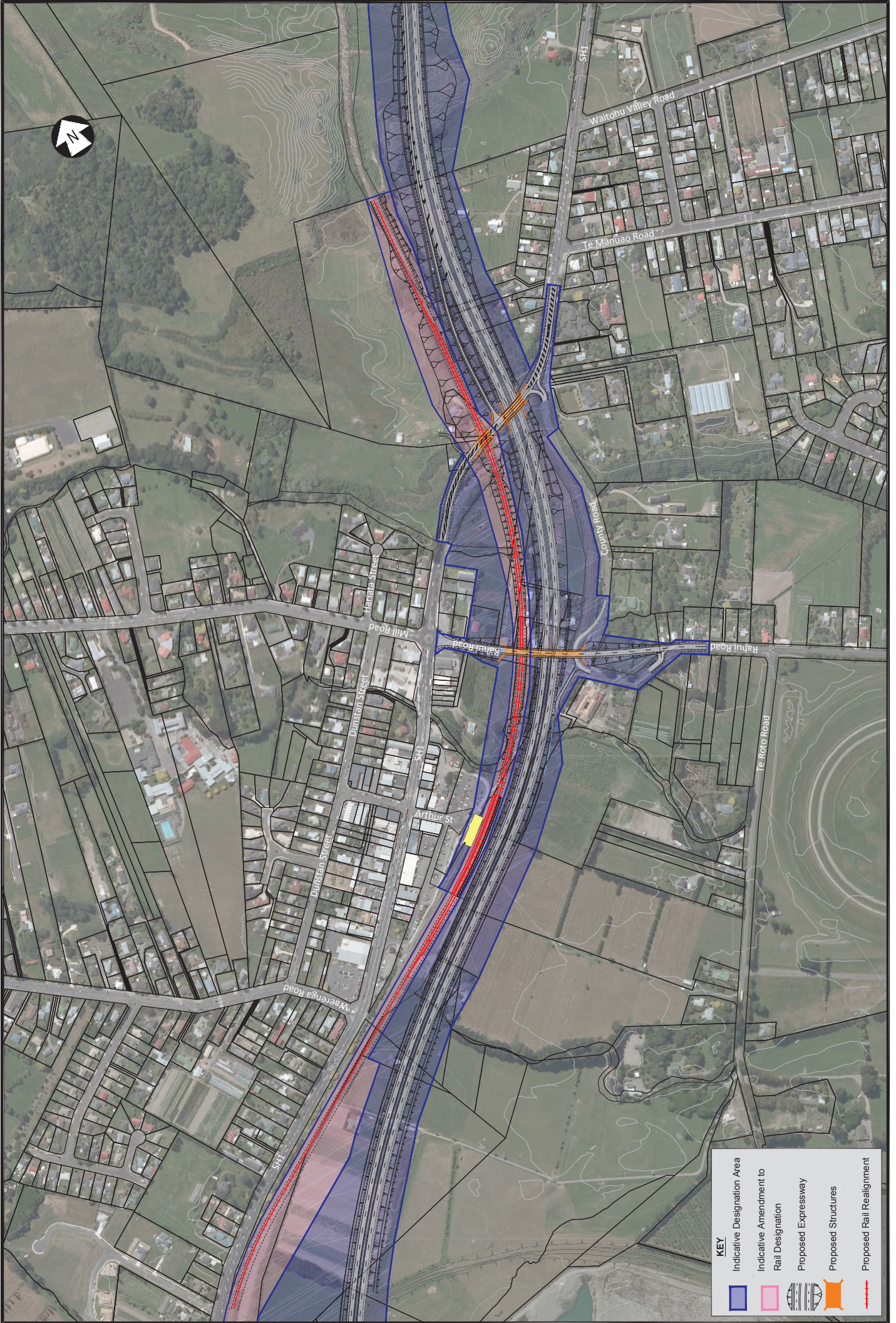
KEY

	Indicative Designation Area
	Indicative Amendment to Rail Designation
	Proposed Expressway
	Proposed Structures
	Proposed Rail Realignment

1:2000
 AERIAL PHOTOGRAPHY FLOWN - MARCH 2010

PEKA PEKA TO OTAKI EXPRESSWAY PROJECT - OTAKI GORGE ROAD
 JUNE 2012 AERIAL ROUTE MAP

15/09/2012 14:53



KEY

- Indicative Designation Area
- Indicative Amendment to Rail Designation
- Proposed Expressway
- Proposed Structures
- Proposed Rail Realignment

1:2000
 @ 1m
 0 40 80 120 160 200 240 m






PEKA PEKA TO OTAKI EXPRESSWAY PROJECT - RAHUI ROAD
 JUNE 2012 AERIAL ROUTE MAP

SHEET 6 OF 7

15/09/2012 14:54



KEY

	Indicative Designation Area
	Indicative Amendment to Rail Designation
	Proposed Expressway
	Proposed Structures
	Proposed Rail Realignment

15/08/2012 14:54