
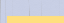
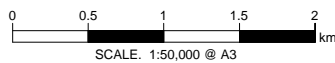




**LEGEND**

-  STATE HIGHWAYS
-  TERRITORIAL AUTHORITY BOUNDARIES
-  COUNCIL LABELS
-  PROPOSED ALIGNMENT
-  SUBURBS AND TOWNS



Revision	Amendment	Approved	Revision Date
R1	REVISION FOR SARA	GM	15/03/12



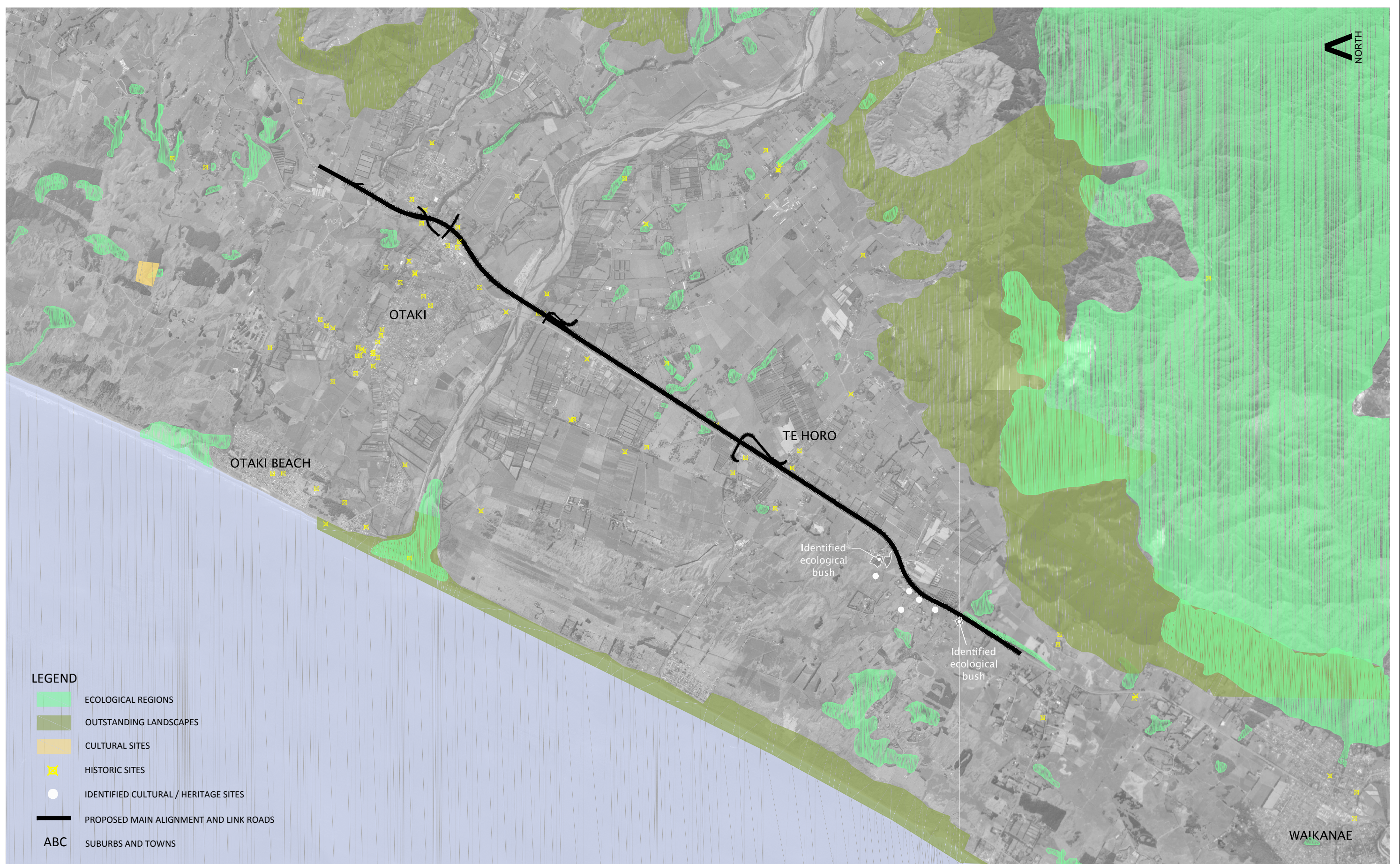
Project  
 NEW ZEALAND TRANSPORT AGENCY  
 PEKA PEKA TO NORTH OTAKI EXPRESSWAY  
 SCHEME ASSESSMENT

Drawn	Designed	Approved	Revision Date
CAD	MAE	T.COULMAN	09/2011

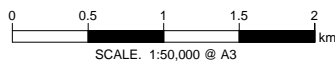
Sheet  
 Site Layout Plans  
 Territorial Authority Boundaries

Project No.	Scale
5C1814.00	1:25,000(A1), 1:50,000(A3)

Drawing No.	Sheet No.	Revision
5/2664/1/5504	GA01	R1



- LEGEND**
- ECOLOGICAL REGIONS
  - OUTSTANDING LANDSCAPES
  - CULTURAL SITES
  - HISTORIC SITES
  - IDENTIFIED CULTURAL / HERITAGE SITES
  - PROPOSED MAIN ALIGNMENT AND LINK ROADS
  - ABC** SUBURBS AND TOWNS



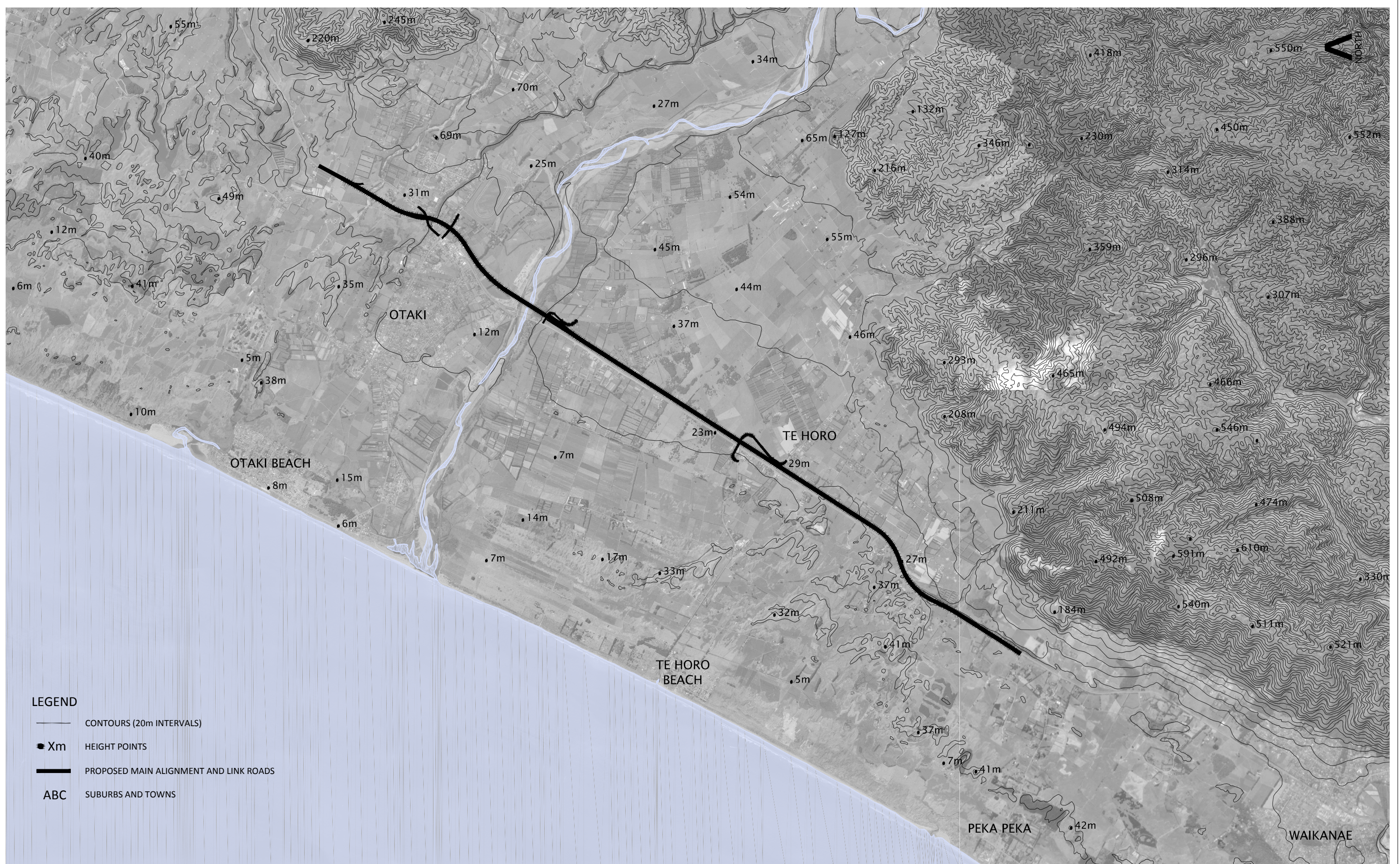
**NOTES:**

1. HISTORIC SITES - RECEIVED FROM KCDC 09/2010 AND KCDC 1999 DISTRICT PLAN PART 1 HERITAGE REGISTER.
2. ECOLOGICAL REGIONS AND OUTSTANDING LANDSCAPES SOURCED FROM KCDC 09/2010.
3. ADDITIONAL CULTURAL AND HERITAGE SITES ADDED DURING SCHEME ASSESSMENT PHASE.

Revision	Amendment	Approved	Revision Date
R1	REVISION FOR SARA	GM	15/03/12

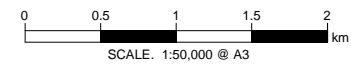


Project <b>NEW ZEALAND TRANSPORT AGENCY          PEKA PEKA TO NORTH OTAKI EXPRESSWAY          SCHEME ASSESSMENT</b>			
Sheet <b>Site Layout Plans          Constraints Map</b>			
Drawn CAD	Designed MAE	Approved T.COULMAN	Revision Date 09/2011
Project No. 5C1814.00		Scale 1:25,000(A1), 1:50,000(A3)	
Drawing No. 5/2664/1/5504			Sheet No. GA02
Revision R1			Revision R1



**LEGEND**

- CONTOURS (20m INTERVALS)
- HEIGHT POINTS
- PROPOSED MAIN ALIGNMENT AND LINK ROADS
- ABC** SUBURBS AND TOWNS



**NOTES:**

1. CO-ORDINATES ARE IN TERMS OF NZTM
2. LEVELS ARE TO NZ GEODETIC DATUM 2000

Revision	Amendment	Approved	Revision Date
R1	REVISION FOR SARA	GM	15/03/12

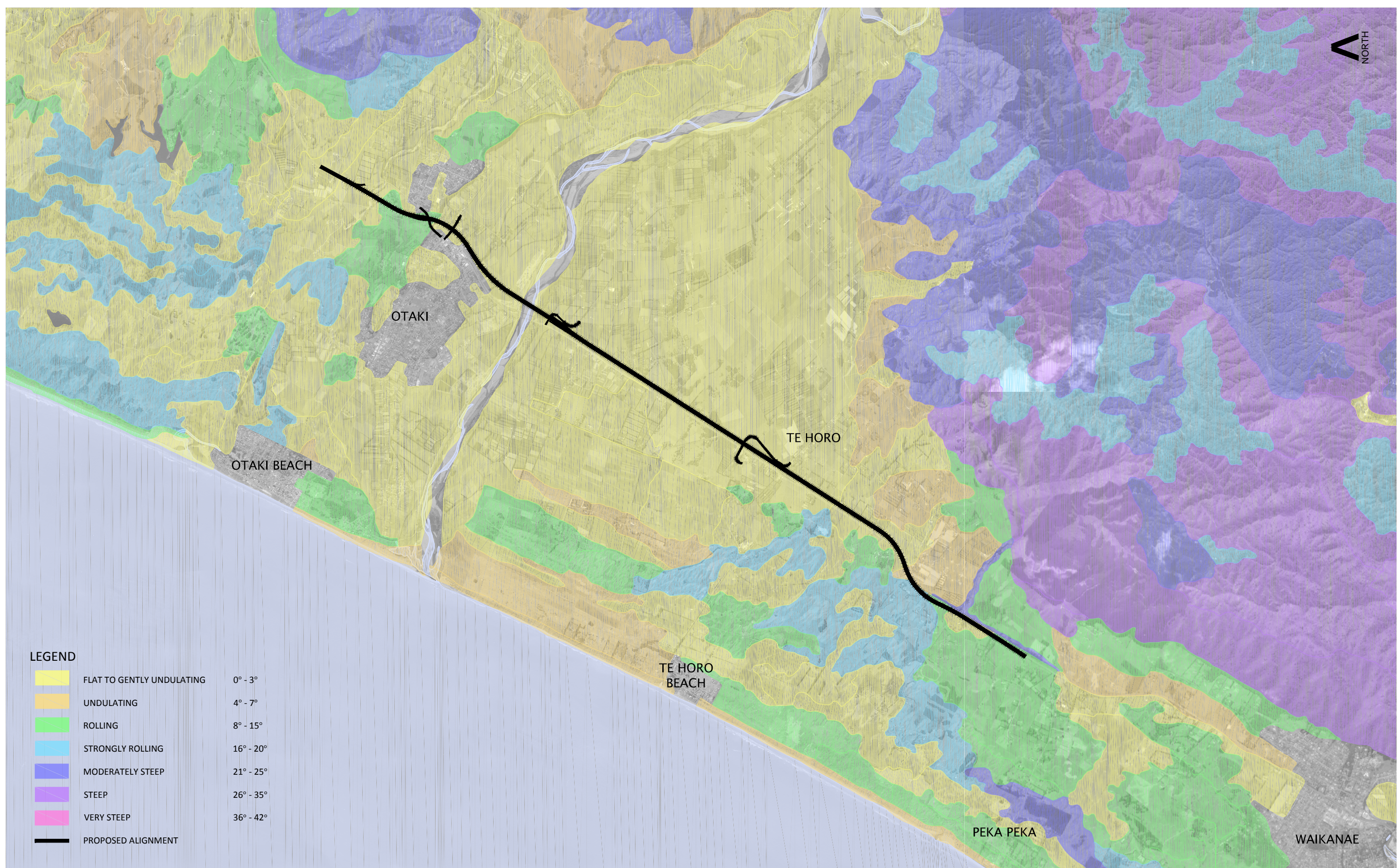


Project  
**NEW ZEALAND TRANSPORT AGENCY**  
**PEKA PEKA TO NORTH OTAKI EXPRESSWAY**  
**SCHEME ASSESSMENT**

Drawn	Designed	Approved	Revision Date
CAD	MAE	T.COULMAN	09/2011

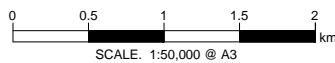
Sheet  
**Site Layout Plans**  
**Landform**

Project No.	Scale	Drawing No.	Sheet No.	Revision
5C1814.00	1:25,000(A1), 1:50,000(A3)	5/2664/1/5504	GA03	R1



**LEGEND**

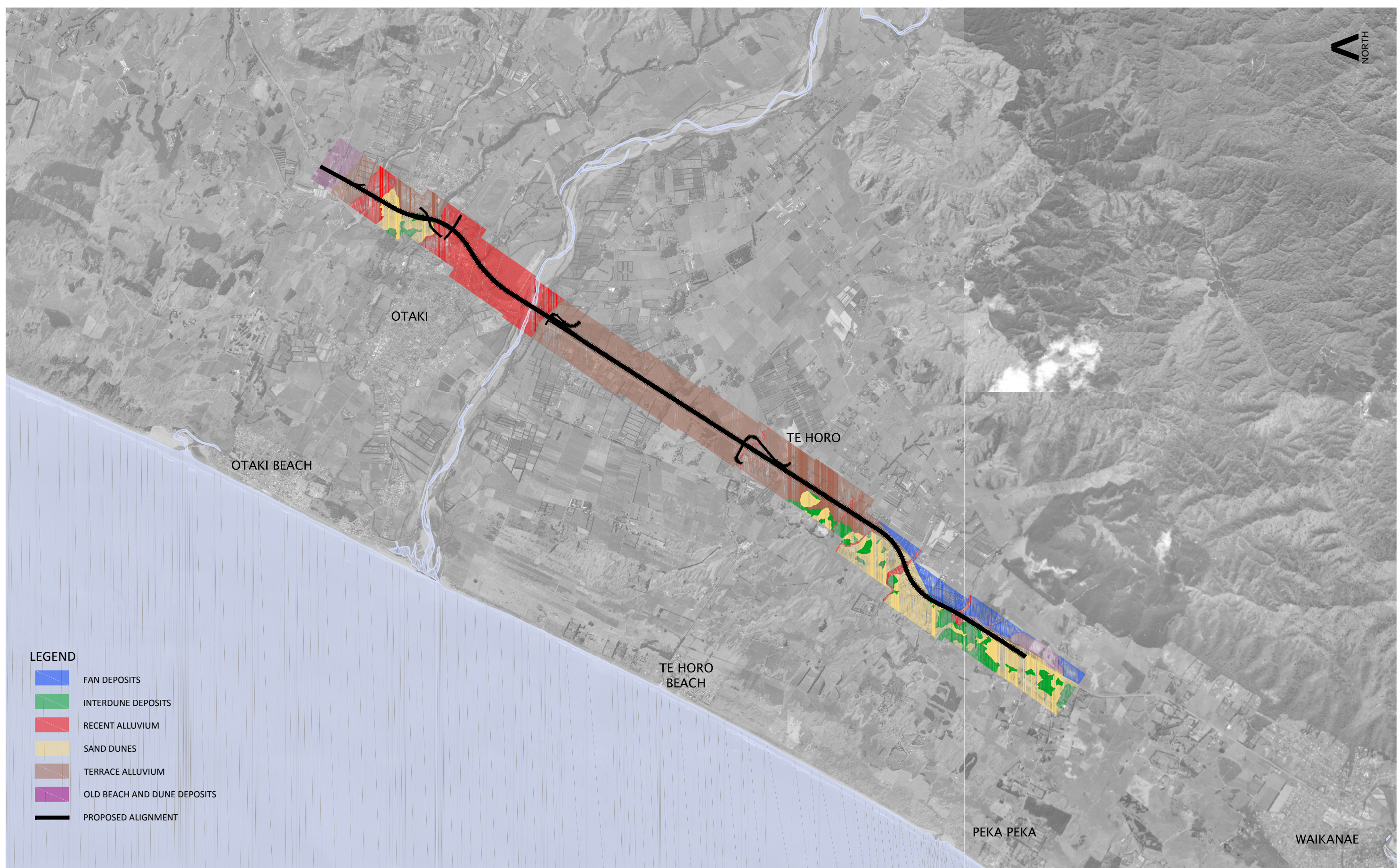
	FLAT TO GENTLY UNDULATING	0° - 3°
	UNDULATING	4° - 7°
	ROLLING	8° - 15°
	STRONGLY ROLLING	16° - 20°
	MODERATELY STEEP	21° - 25°
	STEEP	26° - 35°
	VERY STEEP	36° - 42°
	PROPOSED ALIGNMENT	



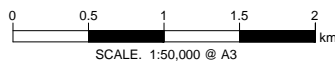
Revision	Amendment	Approved	Revision Date
R1	REVISION FOR SARA	GM	15/03/12



Project			
NEW ZEALAND TRANSPORT AGENCY PEKA PEKA TO NORTH OTAKI EXPRESSWAY SCHEME ASSESSMENT			
Sheet			
Site Layout Plans Slope			
Drawn	Designed	Approved	Revision Date
CAD	MAE	T.COULMAN	09/2011
Project No.	Scale	Drawing No.	
5C1814.00	1:25,000(A1), 1:50,000(A3)	5/2664/1/5504	
Sheet No.	Revision		
GA04	R1		



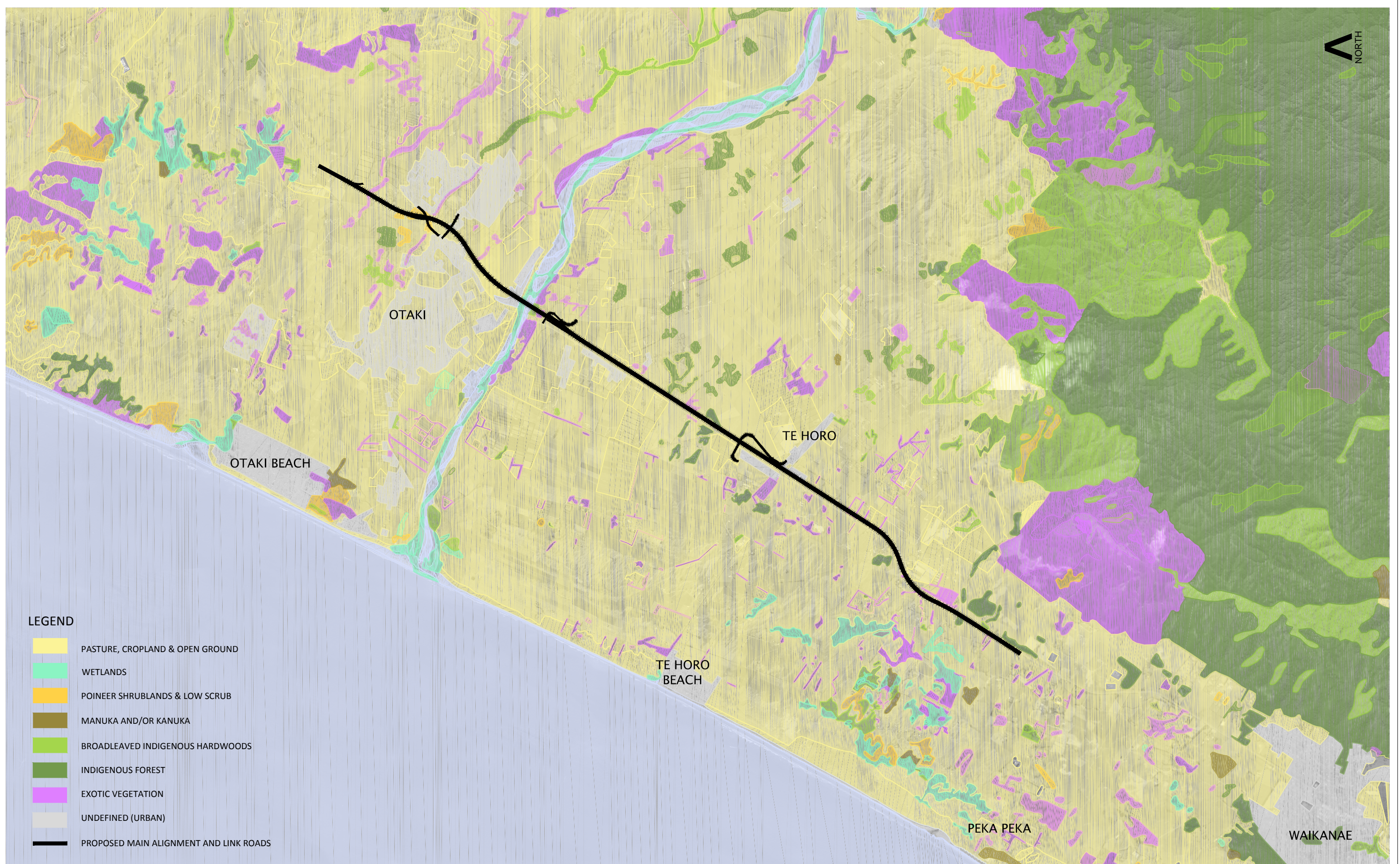
- LEGEND**
- FAN DEPOSITS
  - INTERDUNE DEPOSITS
  - RECENT ALLUVIUM
  - SAND DUNES
  - TERRACE ALLUVIUM
  - OLD BEACH AND DUNE DEPOSITS
  - PROPOSED ALIGNMENT



Revision	Amendment	Approved	Revision Date
R1	REVISION FOR SARA	GM	15/03/12



Project <b>NEW ZEALAND TRANSPORT AGENCY          PEKA PEKA TO NORTH OTAKI EXPRESSWAY          SCHEME ASSESSMENT</b>			
Sheet <b>Site Layout Plans          Geology</b>			
Drawn CAD	Designed MAE	Approved T.COULMAN	Revision Date 09/2011
Project No. 5C1814.00	Scale 1:25,000(A1), 1:50,000(A3)		Drawing No. 5/2664/1/5504
Sheet No. GA05	Revision R1		



- LEGEND**
- PASTURE, CROPLAND & OPEN GROUND
  - WETLANDS
  - POINEER SHRUBLANDS & LOW SCRUB
  - MANUKA AND/OR KANUKA
  - BROADLEAVED INDIGENOUS HARDWOODS
  - INDIGENOUS FOREST
  - EXOTIC VEGETATION
  - UNDEFINED (URBAN)
  - PROPOSED MAIN ALIGNMENT AND LINK ROADS

Revision	Amendment	Approved	Revision Date
R1	REVISION FOR SARA	GM	15/03/12



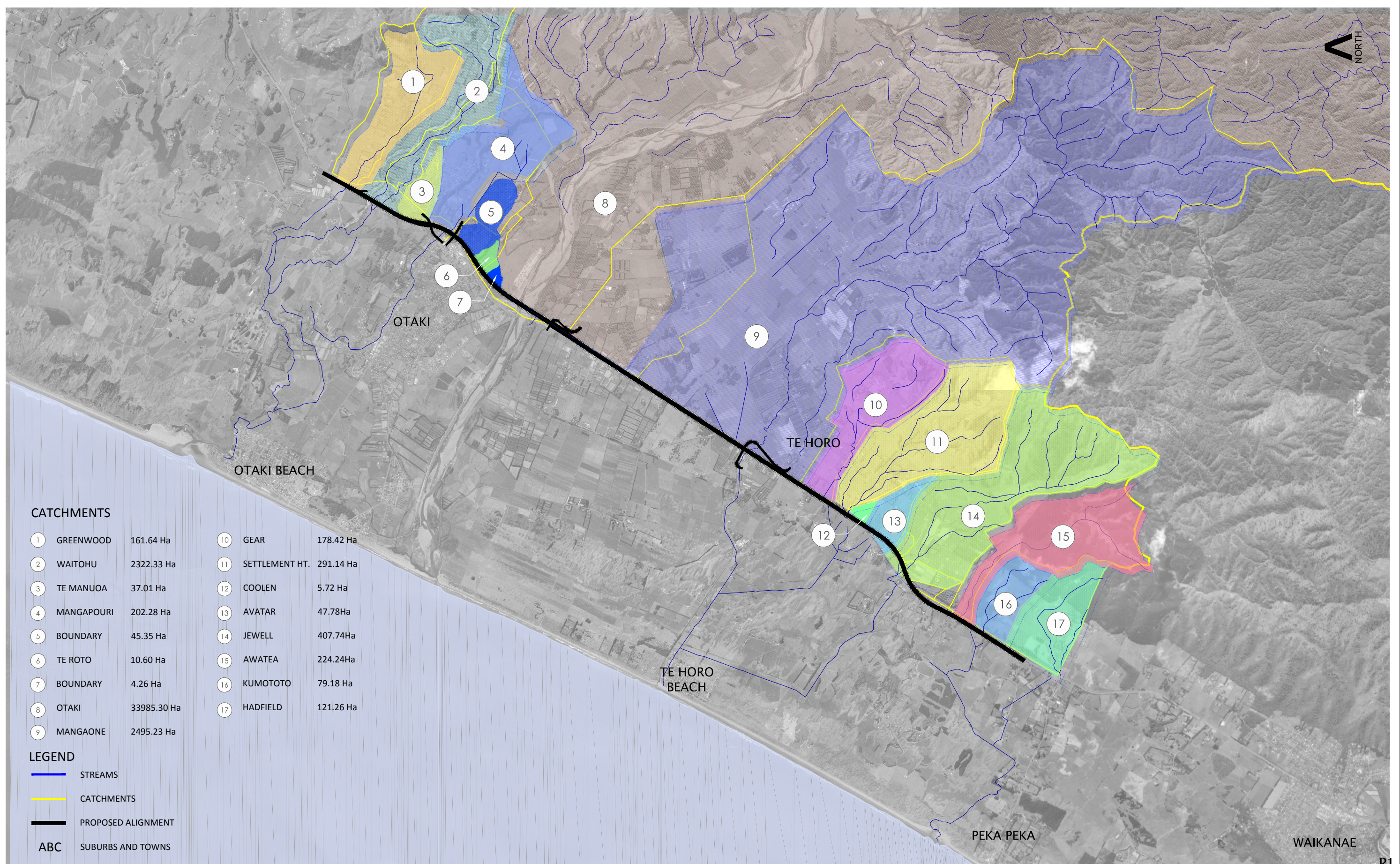
Project  
**NEW ZEALAND TRANSPORT AGENCY**  
**PEKA PEKA TO NORTH OTAKI EXPRESSWAY**  
**SCHEME ASSESSMENT**

Drawn	Designed	Approved	Revision Date
CAD	MAE	T.COULMAN	09/2011

Sheet  
**Site Layout Plans**  
**Current Vegetation Pattern & Landcover**

Project No.	Scale
5C1814.00	1:25,000(A1), 1:50,000(A3)

Drawing No.	Sheet No.	Revision
5/2664/1/5504	GA06	R1

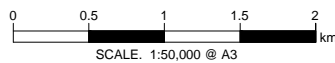


**CATCHMENTS**

1	GREENWOOD	161.64 Ha	10	GEAR	178.42 Ha
2	WAITOHU	2322.33 Ha	11	SETTLEMENT HT.	291.14 Ha
3	TE MANUOA	37.01 Ha	12	COOLEN	5.72 Ha
4	MANGAPOURI	202.28 Ha	13	AVATAR	47.78Ha
5	BOUNDARY	45.35 Ha	14	JEWELL	407.74Ha
6	TE ROTO	10.60 Ha	15	AWATEA	224.24Ha
7	BOUNDARY	4.26 Ha	16	KUMOTOTO	79.18 Ha
8	OTAKI	33985.30 Ha	17	HADFIELD	121.26 Ha
9	MANGAONE	2495.23 Ha			

**LEGEND**

- STREAMS
- CATCHMENTS
- PROPOSED ALIGNMENT
- ABC SUBURBS AND TOWNS



Revision	Amendment	Approved	Revision Date
R1	REVISION FOR SARA	GM	15/03/12



Project  
**NEW ZEALAND TRANSPORT AGENCY**  
**PEKA PEKA TO NORTH OTAKI EXPRESSWAY**  
**SCHEME ASSESSMENT**

Drawn	Designed	Approved	Revision Date
CAD	MAE	T.COULMAN	09/2011

Sheet  
**Site Layout Plans**  
**Stream Catchments**

Project No.	Scale	Drawing No.	Sheet No.	Revision
5C1814.00	1:25,000(A1), 1:50,000(A3)	5/2664/1/5504	GA07	R1