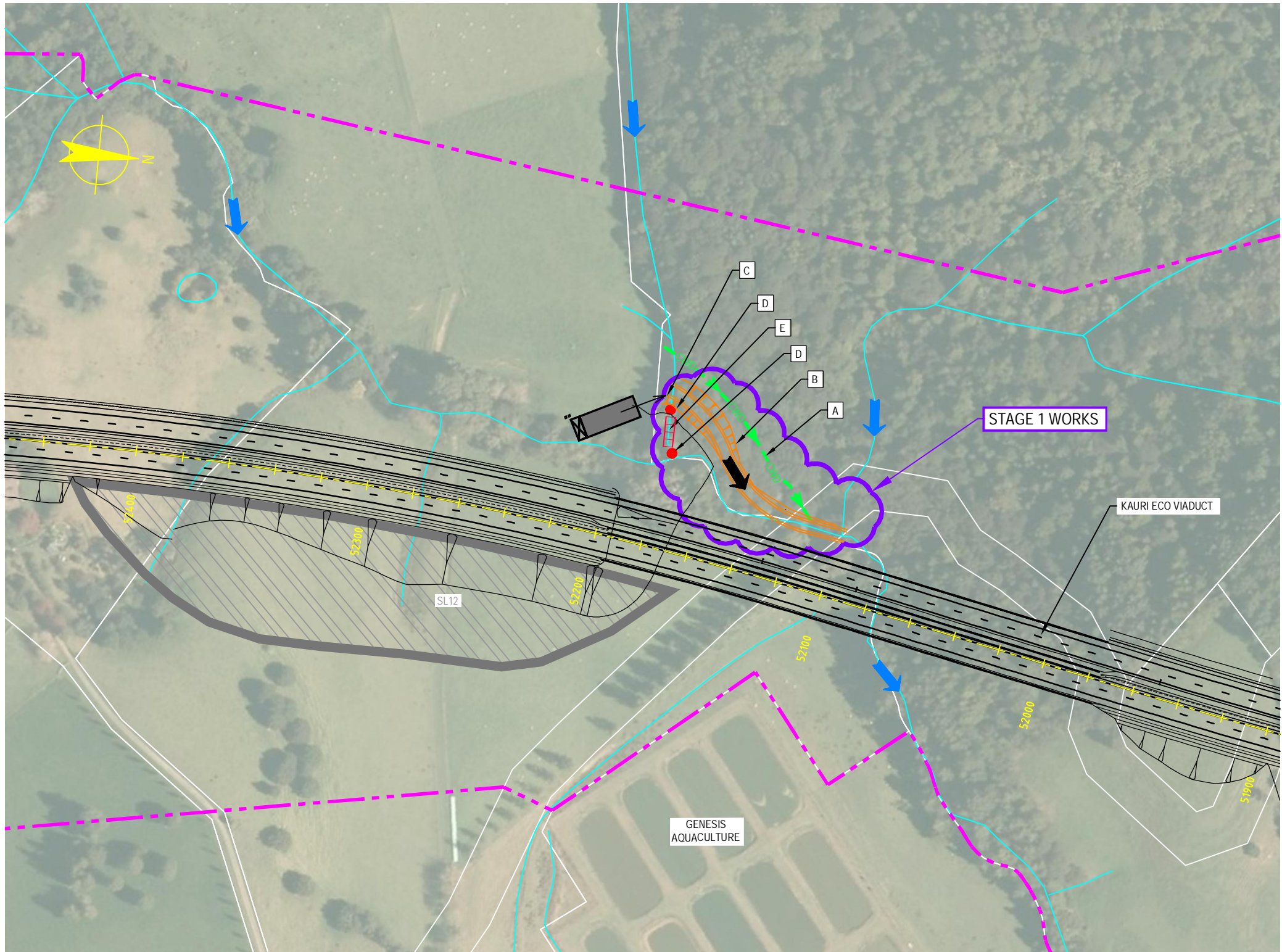


S:\Further North - PAA\3300 Technical\01-Drawing Production\CADD Drawings\ES-051_ES-053.dwg Plot Date: 20 August, 2013 - 2:40 PM



KEY	
	EXISTING STREAM FLOW
	DIVERTED STREAM FLOW
	CLAY PLUG
	SAND BAG BARRIER AND CLAY DAM
	FISH RECOVERY AREA
	CLEAN WATER DIVERSION (CWD)
	SEDIMENT RETENTION POND (SRP) WITH FLOCCULATION SHEDS
	STREAM DIVERSION WORKS (CHANNEL AND EARTHWORKS)

NOTE: FOR GENERAL NOTES AND LEGEND, REFER TO DRAWING ES-001

STAGE 1: SEQUENCE

- STEP 1: ESTABLISH TEMPORARY CLEAN WATER DIVERSION (CWD) (IDENTIFIER [A])
- STEP 2: CONSTRUCT PERMANENT STREAM DIVERSION AND STABILISE CHANNEL. (IDENTIFIER [B])
- STEP 3: ONCE STABILISED, TRANSFER FLOWS AT POINT [C] INTO PERMANENTLY STABILISED DIVERSION CHANNEL [B]
- STEP 4: PLACE SAND BAG BARRIERS AT POINTS [D] IN EXISTING STREAM CHANNEL, AND RECOVER FISH.
- STEP 5: DEWATER EXISTING STREAM CHANNEL [E], PUMP IMPOUNDED WATER TO CHEMICALLY TREATED SRP, AND STABILISE SURFACE.
- STEP 6: REMOVE CWD [A], STABILISE GROUND AND PROCEED TO STAGE 2. (REFER TO DRAWING ES-052).

STAGE 1: ESTABLISHMENT OF STREAM
DIVERSION AND DIVERSION OF FLOWS
SCALE 1:2000 @ A3

AMD	DATE	DESIGN REVIEW	REVD D. MGR	APPD A. MGR	PURPOSE OF ISSUE / AMENDMENT
0	30/08/13	GR	MW	TI	ISSUE FOR NOR / CONSENT

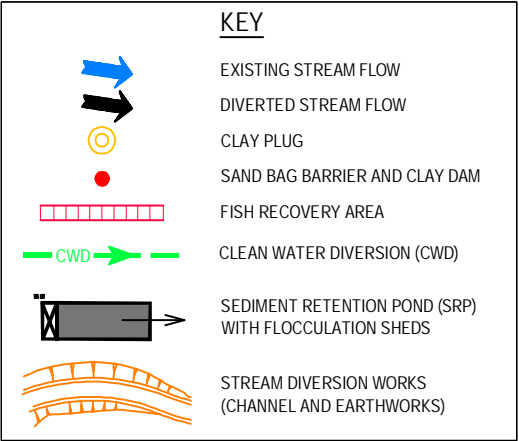
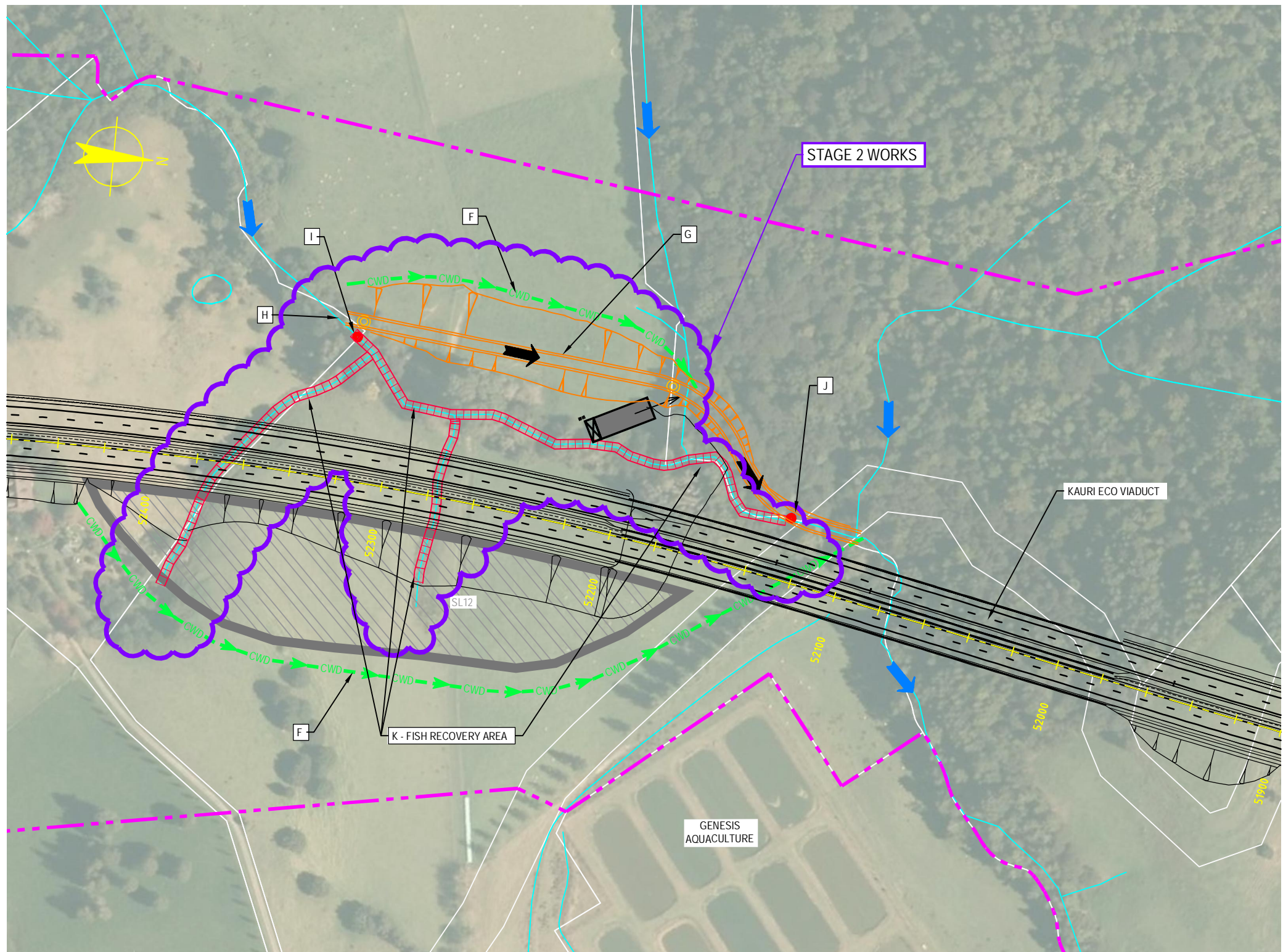


DISCLAIMER
The information shown on this drawing is solely for the purposes of supporting RMA applications for statutory approvals. All information shown is subject to review for compliance with approved consents and the outcomes of final design.

ARA TŪHONO - PŪHOI TO WELLSFORD PŪHOI TO WARKWORTH - FOR RMA APPROVALS			
DRAWN SP / AN	DRAFTING CHECK TC	REVIEWED DISCIPLINE MANAGER MW	APPROVED ALLIANCE MANAGER TI
DESIGNED TC	DESIGN REVIEW GR		

CONSTRUCTION WATER MANAGEMENT STREAM DIVERSION METHODOLOGY CONCEPT PLAN - SHEET 1 OF 2			
SCALE AS SHOWN	CONTRACT No PA3748	DRAWING No ES-051	AMD 0

S:\Further North - PAA\3300 Design\3300.5 Technical\01-Drawing Production\CADD Drawings\ES-051_ES-053.dwg Plot Date: 20 August 2013 3:48 PM



NOTE: FOR GENERAL NOTES AND LEGEND, REFER TO DRAWING ES-001

STAGE 2: SEQUENCE

- STEP 1: ESTABLISH CWD (IDENTIFIER [F])
- STEP 2: ESTABLISH PERMANENT STREAM DIVERSION AND STABILISE. (IDENTIFIER [G])
- STEP 3: PLACE CLAY PLUGS, AS SHOWN, AT BOTH ENDS OF PERMANENT STREAM DIVERSION [G] AND STABILISE THE NEW CHANNEL.
- STEP 4: ONCE STABILISED, REMOVE THE CLAY PLUGS FROM DIVERSION CHANNEL AND TRANSFER FLOWS INTO NEW CHANNEL AT POINT [H] BY PLACING SAND BAG BARRIERS AND CLAY PLUGS AT BOTH POINTS [I] & [J]
- STEP 5: RECOVER FISH FROM THE EXISTING STREAM CHANNEL [K] DEWATER THE EXISTING CHANNEL [K] AND PUMP IMPOUNDED WATER TO THE CHEMICALLY TREATED SRP.
- STEP 6: FILL IN EXISTING STREAM CHANNELS [K] AND STABILISE THE SURFACE.

STAGE 2: CULVERT AND WESTERN STREAM DIVERSION CONSTRUCTION
SCALE 1:2000 @ A3

AMD	DATE	DESIGN REVIEW	REVD D. MGR	APPD A. MGR	PURPOSE OF ISSUE / AMENDMENT
0	30/08/13	GR	MW	TI	ISSUE FOR NOR / CONSENT



DISCLAIMER
The information shown on this drawing is solely for the purposes of supporting RMA applications for statutory approvals. All information shown is subject to review for compliance with approved consents and the outcomes of final design.

ARA TŪHONO - PŪHOI TO WELLSFORD			
PŪHOI TO WARKWORTH - FOR RMA APPROVALS			
DRAWN SP / AN	DRAFTING CHECK TC	REVIEWED DISCIPLINE MANAGER MW	APPROVED ALLIANCE MANAGER TI
DESIGNED TC	DESIGN REVIEW GR		

CONSTRUCTION WATER MANAGEMENT STREAM DIVERSION METHODOLOGY CONCEPT PLAN - SHEET 2 OF 2			
SCALE AS SHOWN	CONTRACT No PA3748	DRAWING No ES-052	AMDT 0