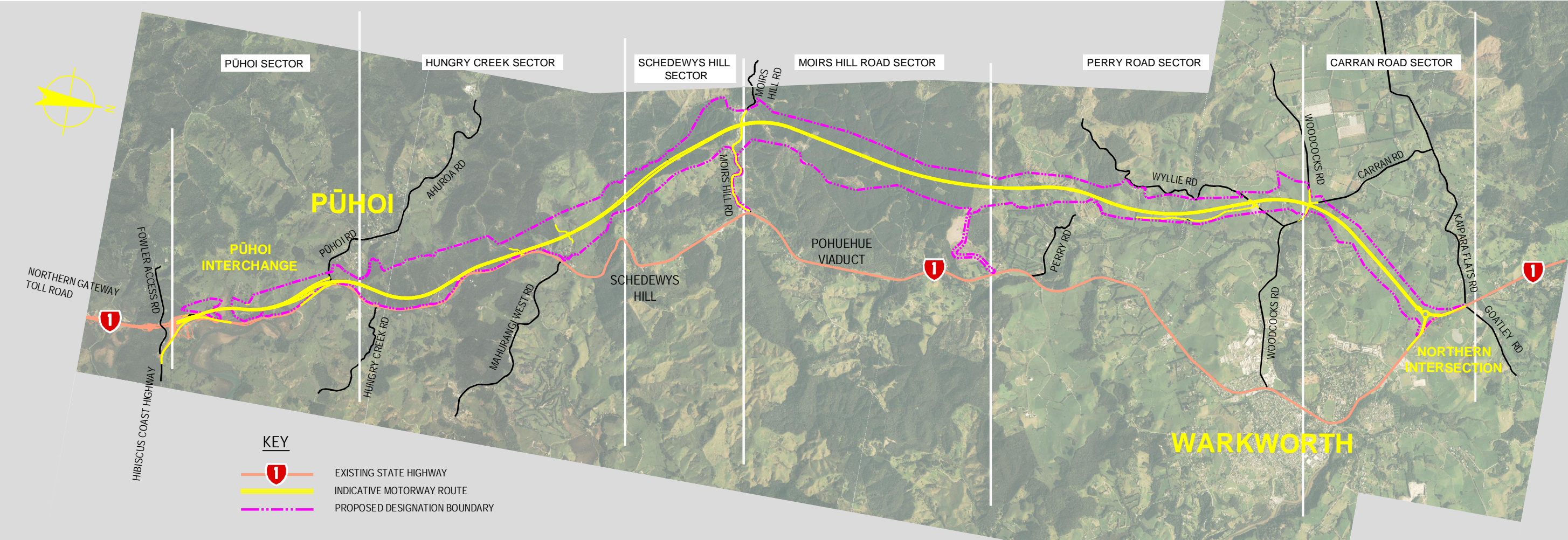


S:\Further North - PAA\3300 Design\3300.5 Technical\01-Drawing Production\CADD Drawings\G-001.dwg Plot Date: 21 August 2013 3:30 PM



LOCATION OF PROPOSED PROJECT

0	30/08/13	RET	MRH	TI	ISSUE FOR NOR / CONSENT
AMD	DATE	DESIGN REVIEW	REV'D D. MGR	APP'D A. MGR	PURPOSE OF ISSUE / AMENDMENT



**DISCLAIMER**  
The information shown on this drawing is solely for the purposes of supporting RMA applications for statutory approvals. All information shown is subject to review for compliance with approved consents and the outcomes of final design.

ARA TŪHONO - PŪHOI TO WELLSFORD			
PŪHOI TO WARKWORTH - FOR RMA APPROVALS			
DRAWN: SNP	DRAFTING CHECK RET	REVIEWED DISCIPLINE MANAGER MRH	APPROVED ALLIANCE MANAGER TI
DESIGNED IH	DESIGN REVIEW RET		

LOCATION OF PROPOSED PROJECT			
SCALE NOT TO SCALE	CONTRACT No PA3748	DRAWING No G-001	AMDT 0



S:\Further North - PAA\300 Design\300.5 Technical\01-Drawing Production\CA00 Drawings\G-002\_G-003.dwg Plot Date: 20 August , 2013 - 6:04 PM

DRWG No.	DRAWING TITLE
GENERAL DRAWINGS	
G-001	LOCATION OF PROPOSED PROJECT
G-002	PROJECT DRAWING INDEX - SHEET 1 OF 2
G-003	PROJECT DRAWING INDEX - SHEET 2 OF 2
ROAD ALIGNMENT	
R-001	ROAD ALIGNMENT - DRAWING INDEX, NOTES AND LEGEND
R-100	ROAD ALIGNMENT PLANS - SHEET LAYOUT
R-101	ROAD ALIGNMENT PLAN - SHEET 1 OF 15
R-102	ROAD ALIGNMENT PLAN - SHEET 2 OF 15
R-103	ROAD ALIGNMENT PLAN - SHEET 3 OF 15
R-104	ROAD ALIGNMENT PLAN - SHEET 4 OF 15
R-105	ROAD ALIGNMENT PLAN - SHEET 5 OF 15
R-106	ROAD ALIGNMENT PLAN - SHEET 6 OF 15
R-107	ROAD ALIGNMENT PLAN - SHEET 7 OF 15
R-108	ROAD ALIGNMENT PLAN - SHEET 8 OF 15
R-109	ROAD ALIGNMENT PLAN - SHEET 9 OF 15
R-110	ROAD ALIGNMENT PLAN- SHEET 10 OF 15
R-111	ROAD ALIGNMENT PLAN - SHEET 11 OF 15
R-112	ROAD ALIGNMENT PLAN - SHEET 12 OF 15
R-113	ROAD ALIGNMENT PLAN - SHEET 13 OF 15
R-114	ROAD ALIGNMENT PLAN - SHEET 14 OF 15
R-115	ROAD ALIGNMENT PLAN - SHEET 15 OF 15
R-120	ROAD PLANS AND LONGITUDINAL SECTIONS - SHEET LAYOUT
R-121	SOUTHBOUND ALIGNMENT MCS0 - PLAN AND LONGITUDINAL SECTION - CH 63650 TO CH 65250 - SHEET 1 OF 6
R-122	SOUTHBOUND ALIGNMENT MCS0 - PLAN AND LONGITUDINAL SECTION - CH 60350 TO CH 63600 - SHEET 2 OF 6
R-123	SOUTHBOUND ALIGNMENT MCS0 - PLAN AND LONGITUDINAL SECTION - CH 57050 TO CH 60300 - SHEET 3 OF 6
R-124	SOUTHBOUND ALIGNMENT MCS0 - PLAN AND LONGITUDINAL SECTION - CH 53750 TO CH 57000 - SHEET 4 OF 6
R-125	SOUTHBOUND ALIGNMENT MCS0 - PLAN AND LONGITUDINAL SECTION - CH 50450 TO CH 53700 - SHEET 5 OF 6
R-126	SOUTHBOUND ALIGNMENT MCS0 - PLAN AND LONGITUDINAL SECTION - CH 47121 TO CH 50400 - SHEET 6 OF 6
R-131	NORTHBOUND ALIGNMENT MCN0 - PLAN AND LONGITUDINAL SECTION - CH 63650 TO CH 65250 - SHEET 1 OF 6
R-132	NORTHBOUND ALIGNMENT MCN0 - PLAN AND LONGITUDINAL SECTION - CH 60350 TO CH 63600 - SHEET 2 OF 6
R-133	NORTHBOUND ALIGNMENT MCN0 - PLAN AND LONGITUDINAL SECTION - CH 57050 TO CH 60300 - SHEET 3 OF 6
R-134	NORTHBOUND ALIGNMENT MCN0 - PLAN AND LONGITUDINAL SECTION - CH 53750 TO CH 57000 - SHEET 4 OF 6
R-135	NORTHBOUND ALIGNMENT MCN0 - PLAN AND LONGITUDINAL SECTION - CH 50450 TO CH 53700 - SHEET 5 OF 6
R-136	NORTHBOUND ALIGNMENT MCN0 - PLAN AND LONGITUDINAL SECTION - CH 47115 TO CH 50400 - SHEET 6 OF 6
R-140	WAIWERA TWO - WAY LINK MC00 - PLAN AND LONGITUDINAL SECTION
R-141	JOHNSTONE'S HILL - EMERGENCY SERVICE ACCESS MC10 - PLAN AND LONGITUDINAL SECTION
R-142	PŪHOI INTERCHANGE - SOUTHBOUND ON RAMP MC30 - PLAN AND LONGITUDINAL SECTION
R-143	PŪHOI INTERCHANGE - NORTHBOUND OFF RAMP MC20 - PLAN AND LONGITUDINAL SECTION
R-144	PŪHOI INTERCHANGE - STATE HIGHWAY 1 CONNECTION MCD0 - PLAN & LONGITUDINAL SECTION
R-147	WYLLIE ROAD MCY0 - PLAN AND LONGITUDINAL SECTION
R-148	WOODCOCKS ROAD MCW0 - PLAN AND LONGITUDINAL SECTION
R-149	CARRAN ROAD MCX0 - PLAN AND LONGITUDINAL SECTION
R-150	NORTHERN LINK TO WHANGAREI MC60 - PLAN AND LONGITUDINAL SECTION
R-151	EASTERN LINK TO WARKWORTH MC70 - PLAN AND LONGITUDINAL SECTION
R-152	MOIRS HILL ROAD MCM0 - PLAN AND LONGITUDINAL SECTION - SHEET 1 OF 3
R-153	MOIRS HILL ROAD MCM0 - PLAN AND LONGITUDINAL SECTION - SHEET 2 OF 3
R-154	MOIRS HILL ROAD MCM0 - PLAN AND LONGITUDINAL SECTION - SHEET 3 OF 3
R-201	ROAD LIGHTING PLAN - SHEET 1 OF 2 - PŪHOI INTERCHANGE - PLAN AND TYPICAL SECTION
R-202	ROAD LIGHTING PLAN - SHEET 2 OF 2 - NORTHERN INTERSECTION - PLAN AND TYPICAL SECTION

DRWG No.	DRAWING TITLE
ROAD ALIGNMENT - Continued	
R-211	TYPICAL CROSS SECTIONS AND DETAILS - SHEET 1 OF 8
R-212	TYPICAL CROSS SECTIONS AND DETAILS - SHEET 2 OF 8
R-213	TYPICAL CROSS SECTIONS AND DETAILS - SHEET 3 OF 8
R-214	TYPICAL CROSS SECTIONS AND DETAILS - SHEET 4 OF 8
R-215	TYPICAL CROSS SECTIONS AND DETAILS - SHEET 5 OF 8
R-216	TYPICAL CROSS SECTIONS AND DETAILS - SHEET 6 OF 8
R-217	TYPICAL CROSS SECTIONS AND DETAILS - SHEET 7 OF 8
R-218	TYPICAL CROSS SECTIONS AND DETAILS - SHEET 8 OF 8
R-221	WAIWERA LINK - TYPICAL CROSS SECTIONS
R-222	PRIVATE ACCESS ROADS - TYPICAL CROSS SECTIONS
R-223	WATSON ROAD (PRIVATE) - TYPICAL CROSS SECTIONS
R-224	MOIRS HILL ROAD - TYPICAL CROSS SECTIONS
R-225	WYLLIE ROAD - TYPICAL CROSS SECTION
R-226	WOODCOCKS ROAD / CARRAN ROAD - TYPICAL CROSS SECTION
R-227	NORTHERN LINK TO WHANGAREI - TYPICAL CROSS SECTIONS
R-228	EASTERN LINK TO WARKWORTH - TYPICAL CROSS SECTIONS
STRUCTURES	
S-001	STRUCTURES - DRAWING INDEX AND GENERAL NOTES
S-021	OKAHU VIADUCT - GENERAL ARRANGEMENT - PLAN AND LONGITUDINAL SECTION
S-022	OKAHU VIADUCT - TYPICAL SECTION
S-031	PŪHOI VIADUCT - GENERAL ARRANGEMENT - PLAN AND LONGITUDINAL SECTION
S-032	PŪHOI VIADUCT - TYPICAL SECTION
S-041	WATSON ROAD OVERPASS - GENERAL ARRANGEMENT - PLAN, LONGITUDINAL AND TYPICAL SECTION
S-051	HIKAUAE VIADUCT - GENERAL ARRANGEMENT - PLAN AND LONGITUDINAL SECTION
S-052	HIKAUAE VIADUCT - TYPICAL SECTION
S-061	SCHED EWYS VIADUCT - GENERAL ARRANGEMENT - PLAN AND LONGITUDINAL SECTION
S-062	SCHED EWYS VIADUCT - TYPICAL SECTION
S-071	MOIRS HILL ROAD UNDERPASS - GENERAL ARRANGEMENT - PLAN AND LONGITUDINAL SECTION
S-072	MOIRS HILL ROAD UNDERPASS - TYPICAL SECTION
S-081	PERRY ROAD VIADUCT - GENERAL ARRANGEMENT - PLAN AND LONGITUDINAL SECTION
S-082	PERRY ROAD VIADUCT - TYPICAL SECTION
S-085	KAURI ECO VIADUCT - GENERAL ARRANGEMENT - PLAN AND LONGITUDINAL SECTION
S-086	KAURI ECO VIADUCT - TYPICAL SECTION
S-091	WYLLIE ROAD OVERPASS - GENERAL ARRANGEMENT - PLAN AND LONGITUDINAL SECTIONS
S-092	WYLLIE ROAD OVERPASS - TYPICAL SECTION
S-101	WOODCOCKS ROAD VIADUCT - GENERAL ARRANGEMENT - PLAN AND LONGITUDINAL SECTION
S-102	WOODCOCKS ROAD VIADUCT - TYPICAL SECTION
S-111	CARRAN ROAD FLOOD RELIEF BRIDGE - GENERAL ARRANGEMENT - PLAN AND ELEVATION
CONSTRUCTION ACTIVITIES	
C-001	CONSTRUCTION ACTIVITIES - DRAWING INDEX, GENERAL NOTES AND LEGEND
C-100	CONSTRUCTION ACTIVITIES - SHEET LAYOUT
C-101	CONSTRUCTION ACTIVITIES - SHEET 1 OF 17
C-102	CONSTRUCTION ACTIVITIES - SHEET 2 OF 17
C-103	CONSTRUCTION ACTIVITIES - SHEET 3 OF 17
C-104	CONSTRUCTION ACTIVITIES - SHEET 4 OF 17
C-105	CONSTRUCTION ACTIVITIES - SHEET 5 OF 17
C-106	CONSTRUCTION ACTIVITIES - SHEET 6 OF 17
C-107	CONSTRUCTION ACTIVITIES - SHEET 7 OF 17

DRWG No.	DRAWING TITLE
CONSTRUCTION ACTIVITIES - Continued	
C-108	CONSTRUCTION ACTIVITIES - SHEET 8 OF 17
C-109	CONSTRUCTION ACTIVITIES - SHEET 9 OF 17
C-110	CONSTRUCTION ACTIVITIES - SHEET 10 OF 17
C-111	CONSTRUCTION ACTIVITIES - SHEET 11 OF 17
C-112	CONSTRUCTION ACTIVITIES - SHEET 12 OF 17
C-113	CONSTRUCTION ACTIVITIES - SHEET 13 OF 17
C-114	CONSTRUCTION ACTIVITIES - SHEET 14 OF 17
C-115	CONSTRUCTION ACTIVITIES - SHEET 15 OF 17
C-116	CONSTRUCTION ACTIVITIES - SHEET 16 OF 17
C-117	CONSTRUCTION ACTIVITIES - SHEET 17 OF 17
CONSTRUCTION NOISE	
CN-001	CONSTRUCTION NOISE RISK AREAS - DRAWING INDEX, NOTES AND LEGEND
CN-100	CONSTRUCTION NOISE RISK AREAS - SHEET LAYOUT
CN-101	CONSTRUCTION NOISE RISK AREAS - SHEET 1 OF 17
CN-102	CONSTRUCTION NOISE RISK AREAS - SHEET 2 OF 17
CN-103	CONSTRUCTION NOISE RISK AREAS - SHEET 3 OF 17
CN-104	CONSTRUCTION NOISE RISK AREAS - SHEET 4 OF 17
CN-105	CONSTRUCTION NOISE RISK AREAS - SHEET 5 OF 17
CN-106	CONSTRUCTION NOISE RISK AREAS - SHEET 6 OF 17
CN-107	CONSTRUCTION NOISE RISK AREAS - SHEET 7 OF 17
CN-108	CONSTRUCTION NOISE RISK AREAS - SHEET 8 OF 17
CN-109	CONSTRUCTION NOISE RISK AREAS - SHEET 9 OF 17
CN-110	CONSTRUCTION NOISE RISK AREAS - SHEET 10 OF 17
CN-111	CONSTRUCTION NOISE RISK AREAS - SHEET 11 OF 17
CN-112	CONSTRUCTION NOISE RISK AREAS - SHEET 12 OF 17
CN-113	CONSTRUCTION NOISE RISK AREAS - SHEET 13 OF 17
CN-114	CONSTRUCTION NOISE RISK AREAS - SHEET 14 OF 17
CN-115	CONSTRUCTION NOISE RISK AREAS - SHEET 15 OF 17
CN-116	CONSTRUCTION NOISE RISK AREAS - SHEET 16 OF 17
CN-117	CONSTRUCTION NOISE RISK AREAS - SHEET 17 OF 17
CONSTRUCTION TRAFFIC	
CT-101	DAILY CONSTRUCTION TRAFFIC VOLUMES ACCESSING EXISTING ROAD NETWORK - TYPICAL CONSTRUCTION DAY
CT-102	DAILY CONSTRUCTION TRAFFIC VOLUMES ACCESSING EXISTING ROAD NETWORK - PEAK CONSTRUCTION DAY
CONSTRUCTION WATER MANAGEMENT	
ES-001	CONSTRUCTION WATER MANAGEMENT - DRAWING INDEX, NOTES AND LEGEND
ES-010	CONSTRUCTION WATER MANAGEMENT - CONCEPT PLAN - SHEET LAYOUT
ES-011	CONSTRUCTION WATER MANAGEMENT - CONCEPT PLAN - SHEET 1 OF 15
ES-012	CONSTRUCTION WATER MANAGEMENT - CONCEPT PLAN - SHEET 2 OF 15
ES-013	CONSTRUCTION WATER MANAGEMENT - CONCEPT PLAN - SHEET 3 OF 15
ES-014	CONSTRUCTION WATER MANAGEMENT - CONCEPT PLAN - SHEET 4 OF 15
ES-015	CONSTRUCTION WATER MANAGEMENT - CONCEPT PLAN - SHEET 5 OF 15
ES-016	CONSTRUCTION WATER MANAGEMENT - CONCEPT PLAN - SHEET 6 OF 15
ES-017	CONSTRUCTION WATER MANAGEMENT - CONCEPT PLAN - SHEET 7 OF 15
ES-018	CONSTRUCTION WATER MANAGEMENT - CONCEPT PLAN - SHEET 8 OF 15
ES-019	CONSTRUCTION WATER MANAGEMENT - CONCEPT PLAN - SHEET 9 OF 15
ES-020	CONSTRUCTION WATER MANAGEMENT - CONCEPT PLAN - SHEET 10 OF 15
ES-021	CONSTRUCTION WATER MANAGEMENT - CONCEPT PLAN - SHEET 11 OF 15
ES-022	CONSTRUCTION WATER MANAGEMENT - CONCEPT PLAN - SHEET 12 OF 15
ES-023	CONSTRUCTION WATER MANAGEMENT - CONCEPT PLAN - SHEET 13 OF 15
ES-024	CONSTRUCTION WATER MANAGEMENT - CONCEPT PLAN - SHEET 14 OF 15
ES-025	CONSTRUCTION WATER MANAGEMENT - CONCEPT PLAN - SHEET 15 OF 15
ES-051	CONSTRUCTION WATER MANAGEMENT - STREAM DIVERSION METHODOLOGY - CONCEPT PLAN - SHEET 1 OF 2
ES-052	CONSTRUCTION WATER MANAGEMENT - STREAM DIVERSION METHODOLOGY - CONCEPT PLAN - SHEET 2 OF 2

0	30/08/13	RET	MRH	TI	ISSUE FOR NOR / CONSENT
AMD	DATE	DESIGN REVIEW	REV'D D. MGR	APP'D A. MGR	PURPOSE OF ISSUE / AMENDMENT



DISCLAIMER

The information shown on this drawing is solely for the purposes of supporting RMA applications for statutory approvals. All information shown is subject to review for compliance with approved consents and the outcomes of final design.

ARA TŪHONO - PŪHOI TO WELLSFORD

PŪHOI TO WARKWORTH - FOR RMA APPROVALS

DRAWN SP	DRAFTING CHECK RET	REVIEWED DISCIPLINE MANAGER	APPROVED ALLIANCE MANAGER
DESIGNED SP	DESIGN REVIEW RET	MRH	TI

PROJECT DRAWING INDEX  
SHEET 1 OF 2

SCALE	CONTRACT No.	DRAWING No.	AMDT
NOT TO SCALE	PA3748	G-002	0

DRWG No.	DRAWING TITLE
CONSTRUCTION WATER MANAGEMENT - Continued	
ES-071	CONSTRUCTION WATER MANAGEMENT - CONCEPT PLAN - OKAHU VIADUCT METHODOLOGY - SHEET 1 OF 2
ES-072	CONSTRUCTION WATER MANAGEMENT - CONCEPT PLAN - OKAHU VIADUCT METHODOLOGY - SHEET 2 OF 2
ES-081	CONSTRUCTION WATER MANAGEMENT - CONCEPT PLAN - CONSTRUCTION YARD OUTLINE
ES-091	CONSTRUCTION WATER MANAGEMENT - CONCEPT PLAN - SPOIL SITE SL10 STAGING PLAN - SHEET 1 OF 5
ES-092	CONSTRUCTION WATER MANAGEMENT - CONCEPT PLAN - SPOIL SITE SL10 STAGING PLAN - SHEET 2 OF 5
ES-093	CONSTRUCTION WATER MANAGEMENT - CONCEPT PLAN - SPOIL SITE SL10 STAGING PLAN - SHEET 3 OF 5
ES-094	CONSTRUCTION WATER MANAGEMENT - CONCEPT PLAN - SPOIL SITE SL10 STAGING PLAN - SHEET 4 OF 5
ES-095	CONSTRUCTION WATER MANAGEMENT - CONCEPT PLAN - SPOIL SITE SL10 STAGING PLAN - SHEET 5 OF 5
ES-100	EXISTING SLOPE AND HYDROGEOLOGICAL PLAN - SHEET LAYOUT
ES-101	EXISTING SLOPE AND HYDROGEOLOGICAL PLAN - SHEET 1 OF 17
ES-102	EXISTING SLOPE AND HYDROGEOLOGICAL PLAN - SHEET 2 OF 17
ES-103	EXISTING SLOPE AND HYDROGEOLOGICAL PLAN - SHEET 3 OF 17
ES-104	EXISTING SLOPE AND HYDROGEOLOGICAL PLAN - SHEET 4 OF 17
ES-105	EXISTING SLOPE AND HYDROGEOLOGICAL PLAN - SHEET 5 OF 17
ES-106	EXISTING SLOPE AND HYDROGEOLOGICAL PLAN - SHEET 6 OF 17
ES-107	EXISTING SLOPE AND HYDROGEOLOGICAL PLAN - SHEET 7 OF 17
ES-108	EXISTING SLOPE AND HYDROGEOLOGICAL PLAN - SHEET 8 OF 17
ES-109	EXISTING SLOPE AND HYDROGEOLOGICAL PLAN - SHEET 9 OF 17
ES-110	EXISTING SLOPE AND HYDROGEOLOGICAL PLAN - SHEET 10 OF 17
ES-111	EXISTING SLOPE AND HYDROGEOLOGICAL PLAN - SHEET 11 OF 17
ES-112	EXISTING SLOPE AND HYDROGEOLOGICAL PLAN - SHEET 12 OF 17
ES-113	EXISTING SLOPE AND HYDROGEOLOGICAL PLAN - SHEET 13 OF 17
ES-114	EXISTING SLOPE AND HYDROGEOLOGICAL PLAN - SHEET 14 OF 17
ES-115	EXISTING SLOPE AND HYDROGEOLOGICAL PLAN - SHEET 15 OF 17
ES-116	EXISTING SLOPE AND HYDROGEOLOGICAL PLAN - SHEET 16 OF 17
ES-117	EXISTING SLOPE AND HYDROGEOLOGICAL PLAN - SHEET 17 OF 17
ES-151	CONSTRUCTION WATER MANAGEMENT - TYPICAL CONCEPT DESIGN DETAILS - CONCEPT PLAN - SHEET 1 OF 5
ES-152	CONSTRUCTION WATER MANAGEMENT - TYPICAL CONCEPT DESIGN DETAILS - CONCEPT PLAN - SHEET 2 OF 5
ES-153	CONSTRUCTION WATER MANAGEMENT - TYPICAL CONCEPT DESIGN DETAILS - CONCEPT PLAN - SHEET 3 OF 5
ES-154	CONSTRUCTION WATER MANAGEMENT - TYPICAL CONCEPT DESIGN DETAILS - CONCEPT PLAN - SHEET 4 OF 5
ES-155	CONSTRUCTION WATER MANAGEMENT - TYPICAL CONCEPT DESIGN DETAILS - CONCEPT PLAN - SHEET 5 OF 5
FRESHWATER ECOLOGY	
FE-101	FRESHWATER ECOLOGY - INDICATIVE STREAM CROSSING LOCATIONS
LANDSCAPE AND VISUAL	
LV-001	LANDSCAPE AND VISUAL - DRAWING INDEX AND LOCALITY MAP
LV-101	LANDSCAPE AND VISUAL - ZONE OF THEORETICAL VISIBILITY MAP
LV-201	VISUAL SIMULATION 01 - HIBISCUS COAST HIGHWAY - EXISTING 124 DEGREE HORIZONTAL VIEW - SHEET 1 OF 2
LV-202	VISUAL SIMULATION 01 - HIBISCUS COAST HIGHWAY - INDICATIVE 124 DEGREE HORIZONTAL VIEW - SHEET 2 OF 2
LV-205	VISUAL SIMULATION 02 - PŪHOI CLOSE - EXISTING 124 DEGREE HORIZONTAL VIEW - SHEET 1 OF 2
LV-206	VISUAL SIMULATION 02 - PŪHOI CLOSE - INDICATIVE 124 DEGREE HORIZONTAL VIEW - SHEET 2 OF 2

DRWG No.	DRAWING TITLE
LANDSCAPE AND VISUAL - Continued	
LV-209	VISUAL SIMULATION 03 - MAHURANGI WEST ROAD - EXISTING 124 DEGREE HORIZONTAL VIEW - SHEET 1 OF 2
LV-210	VISUAL SIMULATION 03 - MAHURANGI WEST ROAD - INDICATIVE 124 DEGREE HORIZONTAL VIEW - SHEET 2 OF 2
LV-213	VISUAL SIMULATION 04 - SCHEDEWYS HILL - EXISTING 124 DEGREE HORIZONTAL VIEW - SHEET 1 OF 2
LV-214	VISUAL SIMULATION 04 - SCHEDEWYS HILL - INDICATIVE 124 DEGREE HORIZONTAL VIEW - SHEET 2 OF 2
LV-217	DIGITAL RENDER 05 - MOTORWAY AT MOIRS HILL
LV-218	VISUAL SIMULATION 06 - MOIRS HILL ROAD - EXISTING 124 DEGREE HORIZONTAL VIEW - SHEET 1 OF 2
LV-219	VISUAL SIMULATION 06 - MOIRS HILL ROAD - INDICATIVE 124 DEGREE HORIZONTAL VIEW - SHEET 2 OF 2
LV-222	VISUAL SIMULATION 07 - PERRY ROAD - EXISTING 124 DEGREE HORIZONTAL VIEW - SHEET 1 OF 2
LV-223	VISUAL SIMULATION 07 - PERRY ROAD - INDICATIVE 124 DEGREE HORIZONTAL VIEW - SHEET 2 OF 2
LV-226	VISUAL SIMULATION 08 - WYLLIE ROAD - EXISTING 124 DEGREE HORIZONTAL VIEW - SHEET 1 OF 2
LV-227	VISUAL SIMULATION 08 - WYLLIE ROAD - INDICATIVE 124 DEGREE HORIZONTAL VIEW - SHEET 2 OF 2
LV-230	VISUAL SIMULATION 09 - WOODCOCKS ROAD - EXISTING 124 DEGREE HORIZONTAL VIEW - SHEET 1 OF 2
LV-231	VISUAL SIMULATION 09 - WOODCOCKS ROAD - INDICATIVE 124 DEGREE HORIZONTAL VIEW - SHEET 2 OF 2
LV-234	VISUAL SIMULATION 10 - VIV DAVIE-MARTIN DRIVE - EXISTING 124 DEGREE HORIZONTAL VIEW - SHEET 1 OF 2
LV-235	VISUAL SIMULATION 10 - VIV DAVIE-MARTIN DRIVE - INDICATIVE 124 DEGREE HORIZONTAL VIEW - SHEET 2 OF 2
LV-238	VISUAL SIMULATION 11 - SH1 PRIVATE RESIDENCE - EXISTING 124 DEGREE HORIZONTAL VIEW - SHEET 1 OF 2
LV-239	VISUAL SIMULATION 11 - SH1 PRIVATE RESIDENCE - INDICATIVE 124 DEGREE HORIZONTAL VIEW - SHEET 2 OF 2
OPERATIONAL NOISE	
ON-001	OPERATIONAL NOISE - DRAWING INDEX, NOTES AND LEGEND
ON-100	PROTECTED PREMISES AND FACILITIES AND THEIR NOISE CRITERIA CATEGORIES - SHEET LAYOUT
ON-101	PROTECTED PREMISES AND FACILITIES AND THEIR NOISE CRITERIA CATEGORIES - SHEET 1 OF 8
ON-102	PROTECTED PREMISES AND FACILITIES AND THEIR NOISE CRITERIA CATEGORIES - SHEET 2 OF 8
ON-103	PROTECTED PREMISES AND FACILITIES AND THEIR NOISE CRITERIA CATEGORIES - SHEET 3 OF 8
ON-104	PROTECTED PREMISES AND FACILITIES AND THEIR NOISE CRITERIA CATEGORIES - SHEET 4 OF 8
ON-105	PROTECTED PREMISES AND FACILITIES AND THEIR NOISE CRITERIA CATEGORIES - SHEET 5 OF 8
ON-106	PROTECTED PREMISES AND FACILITIES AND THEIR NOISE CRITERIA CATEGORIES - SHEET 6 OF 8
ON-107	PROTECTED PREMISES AND FACILITIES AND THEIR NOISE CRITERIA CATEGORIES - SHEET 7 OF 8
ON-108	PROTECTED PREMISES AND FACILITIES AND THEIR NOISE CRITERIA CATEGORIES - SHEET 8 OF 8
ON-301	NOISE LEVEL CONTOUR PLANS - EXISTING ENVIRONMENT, YEAR 2013 - SHEET LAYOUT
ON-302	NOISE LEVEL CONTOUR PLANS - EXISTING ENVIRONMENT, YEAR 2013 - SHEET 1 OF 4
ON-303	NOISE LEVEL CONTOUR PLANS - EXISTING ENVIRONMENT, YEAR 2013 - SHEET 2 OF 4
ON-304	NOISE LEVEL CONTOUR PLANS - EXISTING ENVIRONMENT, YEAR 2013 - SHEET 3 OF 4
ON-305	NOISE LEVEL CONTOUR PLANS - EXISTING ENVIRONMENT, YEAR 2013 - SHEET 4 OF 4
ON-307	NOISE LEVEL CONTOUR PLANS - DO-NOTHING CIRCUMSTANCE, YEAR 2031 - SHEET LAYOUT
ON-308	NOISE LEVEL CONTOUR PLANS - DO-NOTHING CIRCUMSTANCE, YEAR 2031 - SHEET 1 OF 4
ON-309	NOISE LEVEL CONTOUR PLANS - DO-NOTHING CIRCUMSTANCE, YEAR 2031 - SHEET 2 OF 4
ON-310	NOISE LEVEL CONTOUR PLANS - DO-NOTHING CIRCUMSTANCE, YEAR 2031 - SHEET 3 OF 4
ON-311	NOISE LEVEL CONTOUR PLANS - DO-NOTHING CIRCUMSTANCE, YEAR 2031 - SHEET 4 OF 4
ON-331	NOISE LEVEL CONTOUR PLANS - PROJECT WITH MITIGATION AND SH1, YEAR 2031 - SHEET LAYOUT
ON-332	NOISE LEVEL CONTOUR PLANS - PROJECT WITH MITIGATION AND SH1, YEAR 2031 - SHEET 1 OF 4
ON-333	NOISE LEVEL CONTOUR PLANS - PROJECT WITH MITIGATION AND SH1, YEAR 2031 - SHEET 2 OF 4

DRWG No.	DRAWING TITLE
OPERATIONAL NOISE - Continued	
ON-334	NOISE LEVEL CONTOUR PLANS - PROJECT WITH MITIGATION AND SH1, YEAR 2031 - SHEET 3 OF 4
ON-335	NOISE LEVEL CONTOUR PLANS - PROJECT WITH MITIGATION AND SH1, YEAR 2031 - SHEET 4 OF 4
ON-401	LONG-DURATION NOISE SURVEY LOCATIONS
OPERATIONAL WATER MANAGEMENT	
SW-001	OPERATIONAL WATER MANAGEMENT - DRAWING INDEX, NOTES AND LEGEND
SW-100	OPERATIONAL WATER MANAGEMENT - WATER MANAGEMENT PLAN - SHEET LAYOUT
SW-101	OPERATIONAL WATER MANAGEMENT - WATER MANAGEMENT PLAN - SHEET 1 OF 15
SW-102	OPERATIONAL WATER MANAGEMENT - WATER MANAGEMENT PLAN - SHEET 2 OF 15
SW-103	OPERATIONAL WATER MANAGEMENT - WATER MANAGEMENT PLAN - SHEET 3 OF 15
SW-104	OPERATIONAL WATER MANAGEMENT - WATER MANAGEMENT PLAN - SHEET 4 OF 15
SW-105	OPERATIONAL WATER MANAGEMENT - WATER MANAGEMENT PLAN - SHEET 5 OF 15
SW-106	OPERATIONAL WATER MANAGEMENT - WATER MANAGEMENT PLAN - SHEET 6 OF 15
SW-107	OPERATIONAL WATER MANAGEMENT - WATER MANAGEMENT PLAN - SHEET 7 OF 15
SW-108	OPERATIONAL WATER MANAGEMENT - WATER MANAGEMENT PLAN - SHEET 8 OF 15
SW-109	OPERATIONAL WATER MANAGEMENT - WATER MANAGEMENT PLAN - SHEET 9 OF 15
SW-110	OPERATIONAL WATER MANAGEMENT - WATER MANAGEMENT PLAN - SHEET 10 OF 15
SW-111	OPERATIONAL WATER MANAGEMENT - WATER MANAGEMENT PLAN - SHEET 11 OF 15
SW-112	OPERATIONAL WATER MANAGEMENT - WATER MANAGEMENT PLAN - SHEET 12 OF 15
SW-113	OPERATIONAL WATER MANAGEMENT - WATER MANAGEMENT PLAN - SHEET 13 OF 15
SW-114	OPERATIONAL WATER MANAGEMENT - WATER MANAGEMENT PLAN - SHEET 14 OF 15
SW-115	OPERATIONAL WATER MANAGEMENT - WATER MANAGEMENT PLAN - SHEET 15 OF 15
SW-150	OPERATIONAL WATER MANAGEMENT - SUMMARY OF BRIDGES, CULVERTS & STREAM DIVERSIONS
SW-151	OPERATIONAL WATER MANAGEMENT - SUMMARY OF WETLANDS
SW-201	OPERATIONAL WATER MANAGEMENT - TYPICAL CULVERT - LONGITUDINAL SECTION
SW-202	OPERATIONAL WATER MANAGEMENT - TYPICAL CONCRETE PIPE CULVERT - FISH PASSAGE BAFFLE DETAILS
SW-203	OPERATIONAL WATER MANAGEMENT - ARCH CULVERT - FISH PASSAGE NATURAL BED DETAILS
SW-301	OPERATIONAL WATER MANAGEMENT - TYPICAL ENERGY DISSIPATION STRUCTURE - IMPACT BASIN
SW-302	OPERATIONAL WATER MANAGEMENT - TYPICAL ENERGY DISSIPATION STRUCTURE - SAINT ANTHONY FALLS (SAF) STILLING BASIN
SW-303	OPERATIONAL WATER MANAGEMENT - TYPICAL ENERGY DISSIPATION STRUCTURE - RIPRAP BASIN
SW-305	OPERATIONAL WATER MANAGEMENT - TYPICAL DETAIL - DEBRIS RACK FOR CULVERTS
SW-306	OPERATIONAL WATER MANAGEMENT - TYPICAL DETAIL - RELIEF INLET FOR CULVERTS
SW-307	OPERATIONAL WATER MANAGEMENT - TYPICAL DETAIL - SEDIMENT TRAP - FOR ROCK CUT AREAS
SW-401	OPERATIONAL WATER MANAGEMENT - STREAM DIVERSION TYPES - TYPICAL TYPE 1 - LOWLAND STREAM
SW-402	OPERATIONAL WATER MANAGEMENT - STREAM DIVERSION TYPES - TYPICAL TYPE 2 - STEEP STREAM
SW-403	OPERATIONAL WATER MANAGEMENT - STREAM DIVERSION TYPES - TYPICAL TYPE 3 - FLOW CHANNEL
SW-501	OPERATIONAL WATER MANAGEMENT - TYPICAL WETLAND - PLAN AND SECTION

0	30/08/13	RET	MRH	TI	ISSUE FOR NOR / CONSENT
AMD	DATE	DESIGN REVIEW	REV'D D. MGR	APP'D A. MGR	PURPOSE OF ISSUE / AMENDMENT



**DISCLAIMER**  
The information shown on this drawing is solely for the purposes of supporting RMA applications for statutory approvals.  
All information shown is subject to review for compliance with approved consents and the outcomes of final design.

ARA TŌHONO - PŪHOI TO WELLSFORD			
PŪHOI TO WARKWORTH - FOR RMA APPROVALS			
DRAWN SP	DRAFTING CHECK RET	REVIEWED DISCIPLINE MANAGER	APPROVED ALLIANCE MANAGER
DESIGNED SP	DESIGN REVIEW RET	MRH	TI

PROJECT DRAWING INDEX SHEET 2 OF 2			
SCALE	CONTRACT No.	DRAWING No.	AMDT
NOT TO SCALE	PA3748	G-003	0