

DRWG No.	DRAWING TITLE
LV-001	LANDSCAPE AND VISUAL
LV-101	LANDSCAPE AND VISUAL - DRAWING INDEX AND LOCALITY MAP
LV-201	LANDSCAPE AND VISUAL - ZONE OF THEORETICAL VISIBILITY MAP
LV-201	VISUAL SIMULATION 01 - HIBISCUS COAST HIGHWAY - EXISTING 124 DEGREE HORIZONTAL VIEW - SHEET 1 OF 2
LV-202	VISUAL SIMULATION 01 - HIBISCUS COAST HIGHWAY - INDICATIVE 124 DEGREE HORIZONTAL VIEW - SHEET 2 OF 2
LV-205	VISUAL SIMULATION 02 - PŪHOI CLOSE - EXISTING 124 DEGREE HORIZONTAL VIEW - SHEET 1 OF 2
LV-206	VISUAL SIMULATION 02 - PŪHOI CLOSE - INDICATIVE 124 DEGREE HORIZONTAL VIEW - SHEET 2 OF 2
LV-209	VISUAL SIMULATION 03 - MAHURANGI WEST ROAD - EXISTING 124 DEGREE HORIZONTAL VIEW - SHEET 1 OF 2
LV-210	VISUAL SIMULATION 03 - MAHURANGI WEST ROAD - INDICATIVE 124 DEGREE HORIZONTAL VIEW - SHEET 2 OF 2
LV-213	VISUAL SIMULATION 04 - SCHEDEWYS HILL - EXISTING 124 DEGREE HORIZONTAL VIEW - SHEET 1 OF 2
LV-214	VISUAL SIMULATION 04 - SCHEDEWYS HILL - INDICATIVE 124 DEGREE HORIZONTAL VIEW - SHEET 2 OF 2
LV-217	DIGITAL RENDER 05 - MOTORWAY AT MOIRS HILL
LV-218	VISUAL SIMULATION 06 - MOIRS HILL ROAD - EXISTING 124 DEGREE HORIZONTAL VIEW - SHEET 1 OF 2
LV-219	VISUAL SIMULATION 06 - MOIRS HILL ROAD - INDICATIVE 124 DEGREE HORIZONTAL VIEW - SHEET 2 OF 2
LV-222	VISUAL SIMULATION 07 - PERRY ROAD - EXISTING 124 DEGREE HORIZONTAL VIEW - SHEET 1 OF 2
LV-223	VISUAL SIMULATION 07 - PERRY ROAD - INDICATIVE 124 DEGREE HORIZONTAL VIEW - SHEET 2 OF 2
LV-226	VISUAL SIMULATION 08 - WYLLIE ROAD - EXISTING 124 DEGREE HORIZONTAL VIEW - SHEET 1 OF 2
LV-227	VISUAL SIMULATION 08 - WYLLIE ROAD - INDICATIVE 124 DEGREE HORIZONTAL VIEW - SHEET 2 OF 2
LV-230	VISUAL SIMULATION 09 - WOODCOCKS ROAD - EXISTING 124 DEGREE HORIZONTAL VIEW - SHEET 1 OF 2
LV-231	VISUAL SIMULATION 09 - WOODCOCKS ROAD - INDICATIVE 124 DEGREE HORIZONTAL VIEW - SHEET 2 OF 2

DRWG No.	DRAWING TITLE
LV-234	VISUAL SIMULATION 10 - VIV DAVIE-MARTIN DRIVE - EXISTING 124 DEGREE HORIZONTAL VIEW - SHEET 1 OF 2
LV-235	VISUAL SIMULATION 10 - VIV DAVIE-MARTIN DRIVE - INDICATIVE 124 DEGREE HORIZONTAL VIEW - SHEET 2 OF 2
LV-238	VISUAL SIMULATION 11 - SH1 PRIVATE RESIDENCE - EXISTING 124 DEGREE HORIZONTAL VIEW - SHEET 1 OF 2
LV-239	VISUAL SIMULATION 11 - SH1 PRIVATE RESIDENCE - INDICATIVE 124 DEGREE HORIZONTAL VIEW - SHEET 2 OF 2



0	30/08/13	RP	MW	TI	ISSUE FOR NOR / CONSENT
AMD	DATE	DESIGN REVIEW	REV'D BY MGR	APP'D BY MGR	PURPOSE OF ISSUE / AMENDMENT

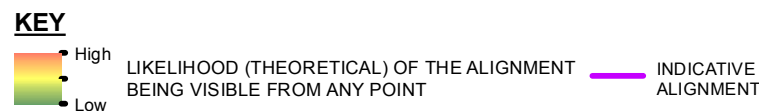


**DISCLAIMER**  
The information shown on this drawing is solely for the purposes of supporting RMA applications for statutory approvals. All information shown is subject to review for compliance with approved consents and the outcomes of final design.

ARA TŪHONO - PŪHOI TO WELLSFORD			
PŪHOI TO WARKWORTH - FOR RMA APPROVALS			
DRAWN SP	DRAFTING CHECK JH	REVIEWED DISCIPLINE MANAGER MW	APPROVED ALLIANCE MANAGER TI
DESIGNED BUILDMEDIA	DESIGN REVIEW RP		

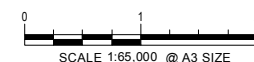
LANDSCAPE AND VISUAL DRAWING INDEX AND LOCALITY MAP			
SCALE AS SHOWN	CONTRACT No PA3748	DRAWING No LV-001	AMD 0





**NOTES:**

1. THIS DRAWING IS TO BE READ IN CONJUNCTION WITH SECTION 2.5 OF THE LANDSCAPE AND VISUAL ASSESSMENT REPORT
2. THIS THEORETICAL VISIBILITY MAP IS COMPUTER GENERATED FROM A 3D TERRAIN MODEL AND INDICATES THE LIKELY EXTENT OF LAND FROM WHICH THE ALIGNMENT IS THEORETICALLY VISIBLE
3. ON THE DRAWING NO ACCOUNT IS TAKEN OF PHYSICAL FEATURES AND VEGETATION WHICH MAY AFFECT THE VISIBILITY
4. VISIBILITY RATINGS SHOWN DO NOT TAKE ACCOUNT OF DISTANCE IN REDUCING THE SIGNIFICANCE OF THE VISIBILITY OF THE PROJECT

[illegible]

The information shown on this drawing is solely for the purposes of supporting RMA applications for statutory approvals. All information shown is subject to review for compliance with approved consents and the outcomes of final design.

## PŪHOI TO WARKWORTH - FOR RMA APPROVALS

DRAWN JW	REVIEWED RP	REVIEWED DISCIPLINE MANAGER MW	APPROVED ALLIANCE MANAGER TI
DESIGNED NP	DESIGN REVIEW RP		

LANDSCAPE AND VISUAL  
ZONE OF THEORETICAL VISIBILITY MAP

SCALE	CONTRACT No	DRAWING No	AMDT
AS SHOWN	PA3748	LV-101	0





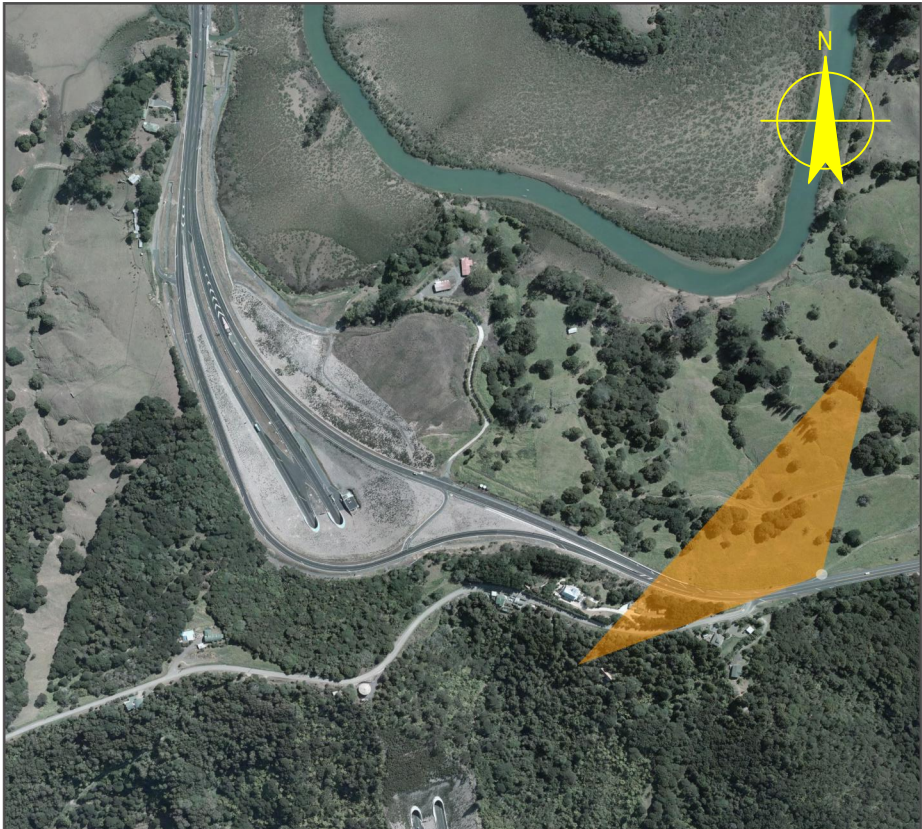
Visual Simulation 01 - Hibiscus Coast Highway

Field of View - 124 degrees Horizontal x 55 degrees Vertical  
Image Projection Method - Rectilinear Perspective  
Captured - Canon 5D MarkII with a 24mm lens  
Viewing Distance - A1 230mm, A2 163mm, A3 115mm

Existing View

Camera Height - 1.66m  
Photographed - 13 May 2013 11:25am  
NZTM 1750887.493, 5955494.229, 94.118

Viewpoint Location



0	30/08/13	RP	MW	TI	ISSUE FOR NOR / CONSENT
AMD	DATE	DESIGN REVIEW	REV'D D. MGR	APP'D A. MGR	PURPOSE OF ISSUE / AMENDMENT



DISCLAIMER  
The information shown on this drawing is solely for the purposes of supporting RMA applications for statutory approvals. All information shown is subject to review for compliance with approved consents and the outcomes of final design.

ARA TŪHONO - PŪHOI TO WELLSFORD			
PŪHOI TO WARKWORTH - FOR RMA APPROVALS			
DRAWN BUILDMEDIA	DRAFTING CHECK IH	REVIEWED DISCIPLINE MANAGER MW	APPROVED ALLIANCE MANAGER TI
DESIGNED BUILDMEDIA	DESIGN REVIEW RP		

VISUAL SIMULATION 01 - HIBISCUS COAST HIGHWAY EXISTING 124 DEGREE HORIZONTAL VIEW SHEET 1 OF 2			
SCALE NOT TO SCALE	CONTRACT No PA3748	DRAWING No LV-201	AMDT 0



Plot Date: 19 August, 2013 - 2:01 PM

S:\Further North - PAA\300 Design\300.5 Technical\01-Drawing Production\CADD\Drawings\LV-202.dwg



Visual Simulation 01 - Hibiscus Coast Highway

Field of View - 124 degrees Horizontal x 55 degrees Vertical  
Image Projection Method - Rectilinear Perspective  
Captured - Canon 5D MarkII with a 24mm lens  
Viewing Distance - A1 230mm, A2 163mm, A3 115mm

Proposed View

Camera Height - 1.66m  
Photographed - 13 May 2013 11:25am  
NZTM 1750887.493, 5955494.229, 94.118

0	30/08/13	RP	MW	TI	ISSUE FOR NOR / CONSENT
AMD	DATE	DESIGN REVIEW	REV'D D. MGR	APP'D A. MGR	PURPOSE OF ISSUE / AMENDMENT



**DISCLAIMER**  
The information shown on this drawing is solely for the purposes of supporting RMA applications for statutory approvals. All information shown is subject to review for compliance with approved consents and the outcomes of final design.

ARA TŪHONO - PŪHOI TO WELLSFORD			
PŪHOI TO WARKWORTH - FOR RMA APPROVALS			
DRAWN BUILDMEDIA	DRAFTING CHECK IH	REVIEWED DISCIPLINE MANAGER MW	APPROVED ALLIANCE MANAGER TI
DESIGNED BUILDMEDIA	DESIGN REVIEW RP		

VISUAL SIMULATION 01 - HIBISCUS COAST HIGHWAY INDICATIVE 124 DEGREE HORIZONTAL VIEW SHEET 2 OF 2			
SCALE NOT TO SCALE	CONTRACT No PA3748	DRAWING No LV-202	AMDT 0



S:\Further North - PAA\300 Design\300.5 Technical\01-Drawing Production\CADD\Drawings\LV-205.dwg Plot Date: 19 August , 2013 - 2:21 PM



Visual Simulation 02 - Pūhoi Close

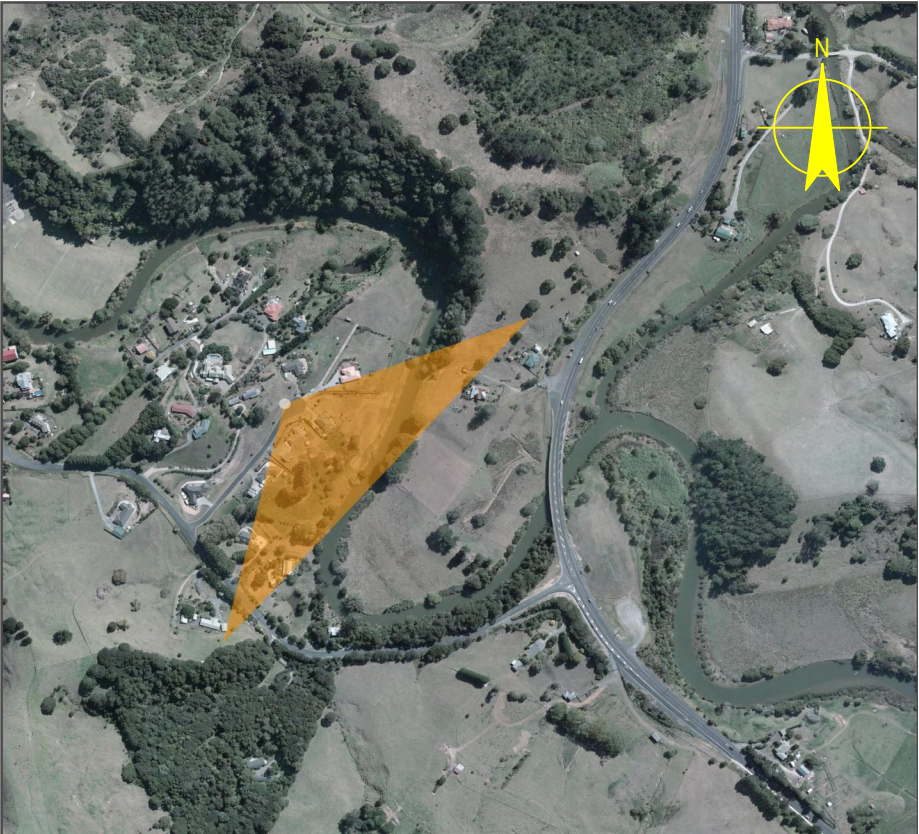
Field of View - 124 degrees Horizontal x 55 degrees Vertical  
Image Projection Method - Rectilinear Perspective

Captured - Canon 5D MarkII with a 24mm lens  
Viewing Distance - A1 230mm, A2 163mm, A3 115mm

Existing View

Camera Height - 1.72m  
Photographed - 13 May 2013 11:42am  
NZTM 1749159.596, 5957698.855, 8.927

Viewpoint Location



0	30/08/13	RP	MW	TI	ISSUE FOR NOR / CONSENT
AMD	DATE	DESIGN REVIEW	REV'D D. MGR	APPD A. MGR	PURPOSE OF ISSUE / AMENDMENT



**DISCLAIMER**  
The information shown on this drawing is solely for the purposes of supporting RMA applications for statutory approvals. All information shown is subject to review for compliance with approved consents and the outcomes of final design.

ARA TŪHONO - PŪHOI TO WELLSFORD			
PŪHOI TO WARKWORTH - FOR RMA APPROVALS			
DRAWN BUILDMEDIA	DRAFTING CHECK IH	REVIEWED DISCIPLINE MANAGER MW	APPROVED ALLIANCE MANAGER TI
DESIGNED BUILDMEDIA	DESIGN REVIEW RP		

VISUAL SIMULATION 02 - PŪHOI CLOSE EXISTING 124 DEGREE HORIZONTAL VIEW SHEET 1 OF 2			
SCALE NOT TO SCALE	CONTRACT No PA3748	DRAWING No LV-205	AMDT 0



Plot Date: 19 August, 2013 - 2:16 PM

S:\Further North - PAA\300 Design\300.5 Technical\01-Drawing Production\CADD\Drawings\LV-206.dwg



Visual Simulation 02 - Pūhoi Close

Field of View - 124 degrees Horizontal x 55 degrees Vertical  
Image Projection Method - Rectilinear Perspective  
Captured - Canon 5D MarkII with a 24mm lens  
Viewing Distance - A1 230mm, A2 163mm, A3 115mm

Proposed View

Camera Height - 1.72m  
Photographed - 13 May 2013 11:42am  
NZTM 1749159.596, 5957698.855, 8.927

0	30/08/13	RP	MW	TI	ISSUE FOR NOR / CONSENT
AMD	DATE	DESIGN REVIEW	REV'D D. MGR	APP'D A. MGR	PURPOSE OF ISSUE / AMENDMENT



**DISCLAIMER**  
The information shown on this drawing is solely for the purposes of supporting RMA applications for statutory approvals. All information shown is subject to review for compliance with approved consents and the outcomes of final design.

ARA TŪHONO - PŪHOI TO WELLSFORD			
PŪHOI TO WARKWORTH - FOR RMA APPROVALS			
DRAWN DESIGNED BUILDMEDIA	DRAFTING CHECK IH DESIGN REVIEW RP	REVIEWED DISCIPLINE MANAGER MW	APPROVED ALLIANCE MANAGER TI

VISUAL SIMULATION 02 - PŪHOI CLOSE INDICATIVE 124 DEGREE HORIZONTAL VIEW SHEET 2 OF 2			
SCALE NOT TO SCALE	CONTRACT No PA3748	DRAWING No LV-206	AMDT 0





Visual Simulation 03 - Mahurangi West Road

Field of View - 124 degrees Horizontal x 55 degrees Vertical  
Image Projection Method - Rectilinear Perspective

Captured - Canon 5D MarkII with a 24mm lens  
Viewing Distance - A1 230mm, A2 163mm, A3 115mm

Existing View

Camera Height - 1.70m  
Photographed - 13 May 2013 12:00pm  
NZTM 1749380.201, 5960228.944, 60.443

Viewpoint Location



0	30/08/13	RP	MW	TI	ISSUE FOR NOR / CONSENT
AMD	DATE	DESIGN REVIEW	REV'D D. MGR	APP'D A. MGR	PURPOSE OF ISSUE / AMENDMENT



**DISCLAIMER**  
The information shown on this drawing is solely for the purposes of supporting RMA applications for statutory approvals. All information shown is subject to review for compliance with approved consents and the outcomes of final design.

ARA TŪHONO - PŪHOI TO WELLSFORD			
PŪHOI TO WARKWORTH - FOR RMA APPROVALS			
DRAWN BUILDMEDIA	DRAFTING CHECK IH	REVIEWED DISCIPLINE MANAGER MW	APPROVED ALLIANCE MANAGER TI
DESIGNED BUILDMEDIA	DESIGN REVIEW RP		

VISUAL SIMULATION 03 - MAHURANGI WEST ROAD EXISTING 124 DEGREE HORIZONTAL VIEW SHEET 1 OF 2			
SCALE NOT TO SCALE	CONTRACT No PA3748	DRAWING No LV-209	AMDT 0



Plot Date: 19 August, 2013 - 2:12 PM

S:\Further North - PAA\300 Design\300.5 Technical\01-Drawing Production\CADD\Drawings\LV-210.dwg



Visual Simulation 03 - Mahurangi West Road

Field of View - 124 degrees Horizontal x 55 degrees Vertical  
Image Projection Method - Rectilinear Perspective  
Captured - Canon 5D MarkII with a 24mm lens  
Viewing Distance - A1 230mm, A2 163mm, A3 115mm

Proposed View

Camera Height - 1.70m  
Photographed - 13 May 2013 12:00pm  
NZTM 1749380.201, 5960228.944, 60.443

0	30/08/13	RP	MW	TI	ISSUE FOR NOR / CONSENT
AMD	DATE	DESIGN REVIEW	REV'D D. MGR	APP'D A. MGR	PURPOSE OF ISSUE / AMENDMENT



**DISCLAIMER**  
The information shown on this drawing is solely for the purposes of supporting RMA applications for statutory approvals. All information shown is subject to review for compliance with approved consents and the outcomes of final design.

ARA TŪHONO - PŪHOI TO WELLSFORD			
PŪHOI TO WARKWORTH - FOR RMA APPROVALS			
DRAWN DESIGNED BUILDMEDIA	DRAFTING CHECK IH DESIGN REVIEW RP	REVIEWED DISCIPLINE MANAGER MW	APPROVED ALLIANCE MANAGER TI

VISUAL SIMULATION 03 - MAHURANGI WEST ROAD INDICATIVE 124 DEGREE HORIZONTAL VIEW SHEET 2 OF 2			
SCALE NOT TO SCALE	CONTRACT No PA3748	DRAWING No LV-210	AMDT 0



S:\Further North - PAA\300 Design\300.5 Technical\01-Drawing Production\CADD\Drawings\LV-213.dwg Plot Date: 19 August, 2013 - 2:12 PM



Visual Simulation 04 - Schedewys Hill

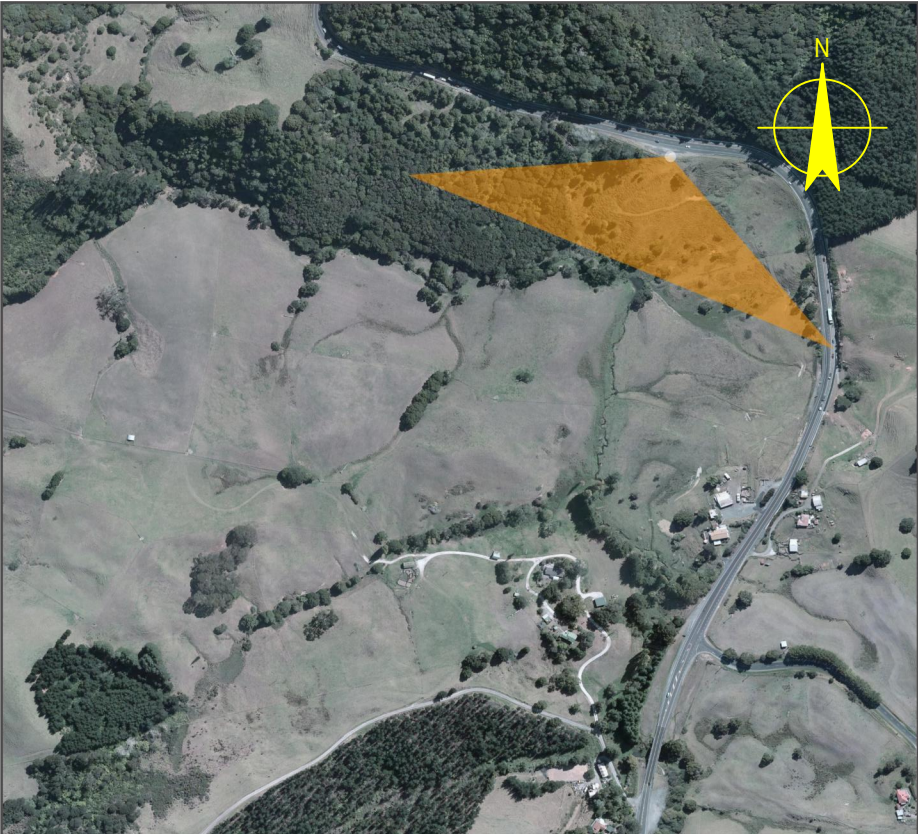
Field of View - 124 degrees Horizontal x 55 degrees Vertical  
Image Projection Method - Rectilinear Perspective

Captured - Canon 5D MarkII with a 24mm lens  
Viewing Distance - A1 230mm, A2 163mm, A3 115mm

Existing View

Camera Height - 1.54m  
Photographed - 13 May 2013 13:04pm  
NZTM 1748612.058, 5960958.731, 65.170

Viewpoint Location



0	30/08/13	RP	MW	TI	ISSUE FOR NOR / CONSENT
AMD	DATE	DESIGN REVIEW	REV'D D. MGR	APP'D A. MGR	PURPOSE OF ISSUE / AMENDMENT



**DISCLAIMER**  
The information shown on this drawing is solely for the purposes of supporting RMA applications for statutory approvals. All information shown is subject to review for compliance with approved consents and the outcomes of final design.

ARA TŪHONO - PŪHOI TO WELLSFORD			
PŪHOI TO WARKWORTH - FOR RMA APPROVALS			
DRAWN BUILDMEDIA	DRAFTING CHECK IH	REVIEWED DISCIPLINE MANAGER MW	APPROVED ALLIANCE MANAGER TI
DESIGNED BUILDMEDIA	DESIGN REVIEW RP		

VISUAL SIMULATION 04 - SCHEDEWYS HILL EXISTING 124 DEGREE HORIZONTAL VIEW SHEET 1 OF 2			
SCALE NOT TO SCALE	CONTRACT No PA3748	DRAWING No LV-213	AMDT 0



Plot Date: 19 August, 2013 - 2:09 PM

S:\Further North - PAA\300 Design\300.5 Technical\01-Drawing Production\CADD\Drawings\LV-214.dwg



Visual Simulation 04 - Schedewys Hill

Field of View - 124 degrees Horizontal x 55 degrees Vertical  
Image Projection Method - Rectilinear Perspective

Captured - Canon 5D MarkII with a 24mm lens  
Viewing Distance - A1 230mm, A2 163mm, A3 115mm

Proposed View

Camera Height - 1.54m  
Photographed - 13 May 2013 13:04pm  
NZTM 1748612.058, 5960958.731, 65.170

0	30/08/13	RP	MW	TI	ISSUE FOR NOR / CONSENT
AMD	DATE	DESIGN REVIEW	REV'D D. MGR	APP'D A. MGR	PURPOSE OF ISSUE / AMENDMENT



**DISCLAIMER**  
The information shown on this drawing is solely for the purposes of supporting RMA applications for statutory approvals. All information shown is subject to review for compliance with approved consents and the outcomes of final design.

ARA TŪHONO - PŪHOI TO WELLSFORD			
PŪHOI TO WARKWORTH - FOR RMA APPROVALS			
DRAWN BUILDMEDIA	DRAFTING CHECK IH	REVIEWED DISCIPLINE MANAGER MW	APPROVED ALLIANCE MANAGER TI
DESIGNED BUILDMEDIA	DESIGN REVIEW RP		

VISUAL SIMULATION 04 - SCHEDEWYS HILL INDICATIVE 124 DEGREE HORIZONTAL VIEW SHEET 2 OF 2			
SCALE NOT TO SCALE	CONTRACT No PA3748	DRAWING No LV-214	AMDT 0



S:\Further North - PAA\300 Design\300.5 Technical\01-Drawing Production\CAOD\Drawings\LV-217.dwg Plot Date: 19 August, 2013 - 2:09 PM



Digital Render 05 - Motorway Moirs Hill

Proposed View

Captured - Digital Render

0	30/08/13	RP	MW	TI	ISSUE FOR NOR / CONSENT
AMD	DATE	DESIGN REVIEW	REV'D D. MGR	APPD A. MGR	PURPOSE OF ISSUE / AMENDMENT



**DISCLAIMER**  
The information shown on this drawing is solely for the purposes of supporting RMA applications for statutory approvals. All information shown is subject to review for compliance with approved consents and the outcomes of final design.

ARA TŪHONO - PŪHOI TO WELLSFORD			
PŪHOI TO WARKWORTH - FOR RMA APPROVALS			
DRAWN BUILDMEDIA	DRAFTING CHECK IH	REVIEWED DISCIPLINE MANAGER MW	APPROVED ALLIANCE MANAGER TI
DESIGNED BUILDMEDIA	DESIGN REVIEW RP		

DIGITAL RENDER 05 - MOTORWAY AT MOIRS HILL INDICATIVE VIEW SHEET 1 OF 1			
SCALE NOT TO SCALE	CONTRACT No PA3748	DRAWING No LV-217	AMDT 0





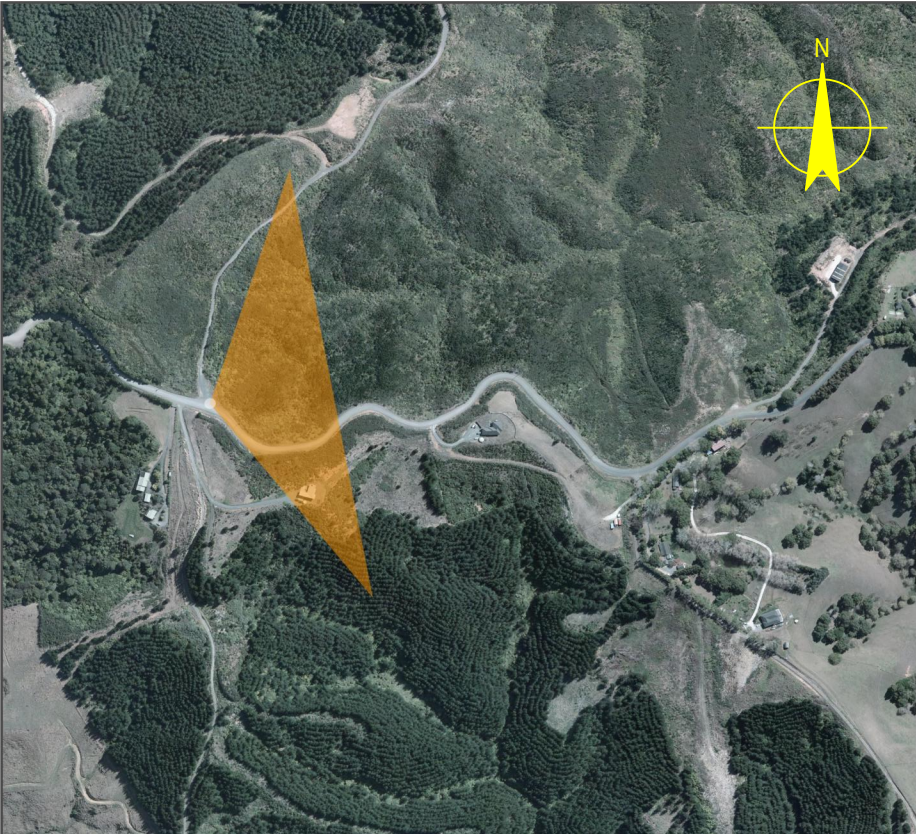
Visual Simulation 06 - Moirs Hill Road

Field of View - 124 degrees Horizontal x 55 degrees Vertical  
Image Projection Method - Rectilinear Perspective  
Captured - Canon 5D MarkII with a 24mm lens  
Viewing Distance - A1 230mm, A2 163mm, A3 115mm

Existing View

Camera Height - 1.72m  
Photographed - 13 May 2013 14:32pm  
NZTM 1746311.908, 5962411.118, 204.346

Viewpoint Location



0	30/08/13	RP	MW	TI	ISSUE FOR NOR / CONSENT
AMD	DATE	DESIGN REVIEW	REV'D D. MGR	APP'D A. MGR	PURPOSE OF ISSUE / AMENDMENT



**DISCLAIMER**  
The information shown on this drawing is solely for the purposes of supporting RMA applications for statutory approvals. All information shown is subject to review for compliance with approved consents and the outcomes of final design.

ARA TŪHONO - PŪHOI TO WELLSFORD			
PŪHOI TO WARKWORTH - FOR RMA APPROVALS			
DRAWN BUILDMEDIA	DRAFTING CHECK IH	REVIEWED DISCIPLINE MANAGER MW	APPROVED ALLIANCE MANAGER TI
DESIGNED BUILDMEDIA	DESIGN REVIEW RP		

VISUAL SIMULATION 06 - MOIRS HILL ROAD EXISTING 124 DEGREE HORIZONTAL VIEW SHEET 1 OF 2			
SCALE NOT TO SCALE	CONTRACT No PA3748	DRAWING No LV-218	AMDT 0



Plot Date: 19 August, 2013 - 2:26 PM

S:\Further North - PAA\300 Design\300.5 Technical\01-Drawing Production\CADD\Drawings\LV-219.dwg



Visual Simulation 06 - Moirs Hill Road

Field of View - 124 degrees Horizontal x 55 degrees Vertical  
Image Projection Method - Rectilinear Perspective  
Captured - Canon 5D MarkII with a 24mm lens  
Viewing Distance - A1 230mm, A2 163mm, A3 115mm

Proposed View

Camera Height - 1.72m  
Photographed - 13 May 2013 14:32pm  
NZTM 1746311.908, 5962411.118, 204.346

0	30/08/13	RP	MW	TI	ISSUE FOR NOR / CONSENT
AMD	DATE	DESIGN REVIEW	REV'D D. MGR	APP'D A. MGR	PURPOSE OF ISSUE / AMENDMENT



**DISCLAIMER**  
The information shown on this drawing is solely for the purposes of supporting RMA applications for statutory approvals. All information shown is subject to review for compliance with approved consents and the outcomes of final design.

ARA TŪHONO - PŪHOI TO WELLSFORD			
PŪHOI TO WARKWORTH - FOR RMA APPROVALS			
DRAWN DESIGNED BUILDMEDIA	DRAFTING CHECK IH DESIGN REVIEW RP	REVIEWED DISCIPLINE MANAGER MW	APPROVED ALLIANCE MANAGER TI

VISUAL SIMULATION 06 - MOIRS HILL ROAD INDICATIVE 124 DEGREE HORIZONTAL VIEW SHEET 2 OF 2			
SCALE NOT TO SCALE	CONTRACT No PA3748	DRAWING No LV-219	AMDT 0



S:\Further North - PAA\300 Design\300.5 Technical\01-Drawing Production\CADD\Drawings\LV-222.dwg Plot Date: 19 August, 2013 - 2:31 PM



Visual Simulation 07 - Perry Road

Field of View - 124 degrees Horizontal x 55 degrees Vertical  
Image Projection Method - Rectilinear Perspective

Captured - Canon 5D MarkII with a 24mm lens  
Viewing Distance - A1 230mm, A2 163mm, A3 115mm

Existing View

Camera Height - 1.50m  
Photographed - 16 May 2013 12:22pm  
NZTM 1746848.681, 5967002.584, 60.332

Viewpoint Location



0	30/08/13	RP	MW	TI	ISSUE FOR NOR / CONSENT
AMD	DATE	DESIGN REVIEW	REV'D D. MGR	APP'D A. MGR	PURPOSE OF ISSUE / AMENDMENT



**DISCLAIMER**  
The information shown on this drawing is solely for the purposes of supporting RMA applications for statutory approvals. All information shown is subject to review for compliance with approved consents and the outcomes of final design.

ARA TŪHONO - PŪHOI TO WELLSFORD			
PŪHOI TO WARKWORTH - FOR RMA APPROVALS			
DRAWN BUILDMEDIA	DRAFTING CHECK IH	REVIEWED DISCIPLINE MANAGER MW	APPROVED ALLIANCE MANAGER TI
DESIGNED BUILDMEDIA	DESIGN REVIEW RP		

VISUAL SIMULATION 07 - PERRY ROAD EXISTING 124 DEGREE HORIZONTAL VIEW SHEET 1 OF 2			
SCALE NOT TO SCALE	CONTRACT No PA3748	DRAWING No LV-222	AMDT 0



Plot Date: 19 August, 2013 - 2:28 PM

S:\Further North - PAA\300 Design\300.5 Technical\01-Drawing Production\CADD\Drawings\LV-223.dwg



Visual Simulation 07 - Perry Road

Field of View - 124 degrees Horizontal x 55 degrees Vertical  
Image Projection Method - Rectilinear Perspective

Captured - Canon 5D MarkII with a 24mm lens  
Viewing Distance - A1 230mm, A2 163mm, A3 115mm

Proposed View

Camera Height - 1.50m  
Photographed - 16 May 2013 12:22pm  
NZTM 1746848.681, 5967002.584, 60.332

0	30/08/13	RP	MW	TI	ISSUE FOR NOR / CONSENT
AMD	DATE	DESIGN REVIEW	REV'D D. MGR	APP'D A. MGR	PURPOSE OF ISSUE / AMENDMENT



**DISCLAIMER**  
The information shown on this drawing is solely for the purposes of supporting RMA applications for statutory approvals. All information shown is subject to review for compliance with approved consents and the outcomes of final design.

ARA TŪHONO - PŪHOI TO WELLSFORD			
PŪHOI TO WARKWORTH - FOR RMA APPROVALS			
DRAWN DESIGNED BUILDMEDIA	DRAFTING CHECK IH DESIGN REVIEW RP	REVIEWED DISCIPLINE MANAGER MW	APPROVED ALLIANCE MANAGER TI

VISUAL SIMULATION 07 - PERRY ROAD INDICATIVE 124 DEGREE HORIZONTAL VIEW SHEET 2 OF 2			
SCALE NOT TO SCALE	CONTRACT No PA3748	DRAWING No LV-223	AMDT 0





Visual Simulation 08 - Wyllie Road

Field of View - 124 degrees Horizontal x 55 degrees Vertical  
Image Projection Method - Rectilinear Perspective

Captured - Canon 5D MarkII with a 24mm lens  
Viewing Distance - A1 230mm, A2 163mm, A3 115mm

Existing View

Camera Height - 1.68m  
Photographed - 14 May 2013 12:50pm  
NZTM 1746170.200, 5968869.619, 62.472

Viewpoint Location



0	30/08/13	RP	MW	TI	ISSUE FOR NOR / CONSENT
AMD	DATE	DESIGN REVIEW	REV'D D. MGR	APP'D A. MGR	PURPOSE OF ISSUE / AMENDMENT



**DISCLAIMER**  
The information shown on this drawing is solely for the purposes of supporting RMA applications for statutory approvals. All information shown is subject to review for compliance with approved consents and the outcomes of final design.

ARA TŪHONO - PŪHOI TO WELLSFORD			
PŪHOI TO WARKWORTH - FOR RMA APPROVALS			
DRAWN DESIGNED BUILDMEDIA	DRAFTING CHECK IH DESIGN REVIEW RP	REVIEWED DISCIPLINE MANAGER MW	APPROVED ALLIANCE MANAGER TI

VISUAL SIMULATION 08 - WYLLIE ROAD EXISTING 124 DEGREE HORIZONTAL VIEW SHEET 1 OF 2			
SCALE NOT TO SCALE	CONTRACT No PA3748	DRAWING No LV-226	AMDT 0



Plot Date: 19 August, 2013 - 2:28 PM

S:\Further North - PAA\300 Design\300.5 Technical\01-Drawing Production\CADD\Drawings\LV-227.dwg



Visual Simulation 08 - Wyllie Road

Field of View - 124 degrees Horizontal x 55 degrees Vertical  
Image Projection Method - Rectilinear Perspective

Captured - Canon 5D MarkII with a 24mm lens  
Viewing Distance - A1 230mm, A2 163mm, A3 115mm

Proposed View

Camera Height - 1.68m  
Photographed - 14 May 2013 12:50pm  
NZTM 1746170.200, 5968869.619, 62.472

0	30/08/13	RP	MW	TI	ISSUE FOR NOR / CONSENT
AMD	DATE	DESIGN REVIEW	REV'D D. MGR	APPD A. MGR	PURPOSE OF ISSUE / AMENDMENT



**DISCLAIMER**  
The information shown on this drawing is solely for the purposes of supporting RMA applications for statutory approvals. All information shown is subject to review for compliance with approved consents and the outcomes of final design.

ARA TŪHONO - PŪHOI TO WELLSFORD			
PŪHOI TO WARKWORTH - FOR RMA APPROVALS			
DRAWN DESIGNED BUILDMEDIA	DRAFTING CHECK IH DESIGN REVIEW RP	REVIEWED DISCIPLINE MANAGER MW	APPROVED ALLIANCE MANAGER TI

VISUAL SIMULATION 08 - WYLLIE ROAD INDICATIVE 124 DEGREE HORIZONTAL VIEW SHEET 2 OF 2			
SCALE NOT TO SCALE	CONTRACT No PA3748	DRAWING No LV-227	AMDT 0



S:\Further North - PAA\300 Design\300.5 Technical\01-Drawing Production\CADD\Drawings\LV-230.dwg Plot Date: 19 August , 2013 - 2:38 PM



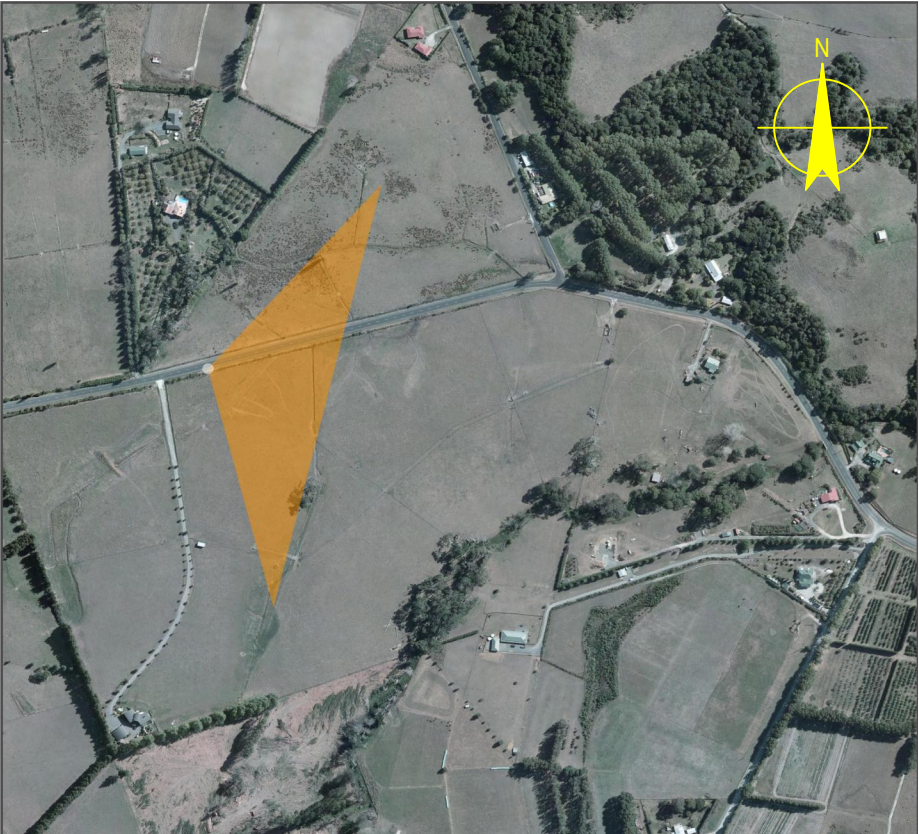
Visual Simulation 09 - Woodcocks Road

Field of View - 124 degrees Horizontal x 55 degrees Vertical  
Image Projection Method - Rectilinear Perspective  
Captured - Canon 5D MarkII with a 24mm lens  
Viewing Distance - A1 230mm, A2 163mm, A3 115mm

Existing View

Camera Height - 1.77m  
Photographed - 14 May 2013 14:03pm  
NZTM 1745766.566, 5969793.117, 33.199

Viewpoint Location



0	30/08/13	RP	MW	TI	ISSUE FOR NOR / CONSENT
AMD	DATE	DESIGN REVIEW	REV'D D. MGR	APP'D A. MGR	PURPOSE OF ISSUE / AMENDMENT



**DISCLAIMER**  
The information shown on this drawing is solely for the purposes of supporting RMA applications for statutory approvals. All information shown is subject to review for compliance with approved consents and the outcomes of final design.

ARA TŪHONO - PŪHOI TO WELLSFORD			
PŪHOI TO WARKWORTH - FOR RMA APPROVALS			
DRAWN DESIGNED BUILDMEDIA	DRAFTING CHECK IH DESIGN REVIEW RP	REVIEWED DISCIPLINE MANAGER MW	APPROVED ALLIANCE MANAGER TI

VISUAL SIMULATION 09 - WOODCOCKS ROAD EXISTING 124 DEGREE HORIZONTAL VIEW SHEET 1 OF 2			
SCALE NOT TO SCALE	CONTRACT No PA3748	DRAWING No LV-230	AMDT 0



Plot Date: 19 August, 2013 - 2:27 PM

S:\Further North - PAA\300 Design\300.5 Technical\01-Drawing Production\CAOD\Drawings\LV-231.dwg



Visual Simulation 09 - Woodcocks Road

Field of View - 124 degrees Horizontal x 55 degrees Vertical  
Image Projection Method - Rectilinear Perspective  
Captured - Canon 5D MarkII with a 24mm lens  
Viewing Distance - A1 230mm, A2 163mm, A3 115mm

Proposed View

Camera Height - 1.77m  
Photographed - 14 May 2013 14:03pm  
NZTM 1745766.566, 5969793.117, 33.199

0	30/08/13	RP	MW	TI	ISSUE FOR NOR / CONSENT
AMD	DATE	DESIGN REVIEW	REV'D D. MGR	APP'D A. MGR	PURPOSE OF ISSUE / AMENDMENT



**DISCLAIMER**  
The information shown on this drawing is solely for the purposes of supporting RMA applications for statutory approvals. All information shown is subject to review for compliance with approved consents and the outcomes of final design.

ARA TŪHONO - PŪHOI TO WELLSFORD			
PŪHOI TO WARKWORTH - FOR RMA APPROVALS			
DRAWN BUILDMEDIA	DRAFTING CHECK IH	REVIEWED DISCIPLINE MANAGER MW	APPROVED ALLIANCE MANAGER TI
DESIGNED BUILDMEDIA	DESIGN REVIEW RP		

VISUAL SIMULATION 09 - WOODCOCKS ROAD INDICATIVE 124 DEGREE HORIZONTAL VIEW SHEET 2 OF 2			
SCALE NOT TO SCALE	CONTRACT No PA3748	DRAWING No LV-231	AMDT 0



S:\Further North - PAA\300 Design\300.5 Technical\01-Drawing Production\CADD\Drawings\LV-234.dwg Plot Date: 19 August , 2013 - 2:36 PM



Visual Simulation 10 - Viv Davie-Martin Drive

Field of View - 124 degrees Horizontal x 55 degrees Vertical  
Image Projection Method - Rectilinear Perspective

Captured - Canon 5D MarkII with a 24mm lens  
Viewing Distance - A1 230mm, A2 163mm, A3 115mm

Existing View

Camera Height - 1.72m  
Photographed - 06 June 2013 11:55pm  
NZTM 1746731.391, 5970512.717, 62.662

Viewpoint Location



0	30/08/13	RP	MW	TI	ISSUE FOR NOR / CONSENT
AMD	DATE	DESIGN REVIEW	REV'D D. MGR	APP'D A. MGR	PURPOSE OF ISSUE / AMENDMENT



**DISCLAIMER**  
The information shown on this drawing is solely for the purposes of supporting RMA applications for statutory approvals. All information shown is subject to review for compliance with approved consents and the outcomes of final design.

ARA TŪHONO - PŪHOI TO WELLSFORD			
PŪHOI TO WARKWORTH - FOR RMA APPROVALS			
DRAWN BUILDMEDIA	DRAFTING CHECK IH	REVIEWED DISCIPLINE MANAGER MW	APPROVED ALLIANCE MANAGER TI
DESIGNED BUILDMEDIA	DESIGN REVIEW RP		

VISUAL SIMULATION 10 - VIV DAVIE-MARTIN DRIVE EXISTING 124 DEGREE HORIZONTAL VIEW SHEET 1 OF 2			
SCALE NOT TO SCALE	CONTRACT No PA3748	DRAWING No LV-234	AMDT 0



Plot Date: 19 August, 2013 - 2:26 PM

S:\Further North - PAA\300 Design\300.5 Technical\01-Drawing Production\CADD\Drawings\LV-235.dwg



Visual Simulation 10 - Viv Davie-Martin Drive

Field of View - 124 degrees Horizontal x 55 degrees Vertical  
Image Projection Method - Rectilinear Perspective  
Captured - Canon 5D MarkII with a 24mm lens  
Viewing Distance - A1 230mm, A2 163mm, A3 115mm

Proposed View

Camera Height - 1.72m  
Photographed - 06 June 2013 11:55pm  
NZTM 1746731.391, 5970512.717, 62.662

0	30/08/13	RP	MW	TI	ISSUE FOR NOR / CONSENT
AMD	DATE	DESIGN REVIEW	REV'D D. MGR	APP'D A. MGR	PURPOSE OF ISSUE / AMENDMENT



**DISCLAIMER**  
The information shown on this drawing is solely for the purposes of supporting RMA applications for statutory approvals. All information shown is subject to review for compliance with approved consents and the outcomes of final design.

ARA TŪHONO - PŪHOI TO WELLSFORD			
PŪHOI TO WARKWORTH - FOR RMA APPROVALS			
DRAWN DESIGNED BUILDMEDIA	DRAFTING CHECK IH DESIGN REVIEW RP	REVIEWED DISCIPLINE MANAGER MW	APPROVED ALLIANCE MANAGER TI

VISUAL SIMULATION 10 - VIV DAVIE-MARTIN DRIVE INDICATIVE 124 DEGREE HORIZONTAL VIEW SHEET 2 OF 2			
SCALE NOT TO SCALE	CONTRACT No PA3748	DRAWING No LV-235	AMDT 0



S:\Further North - PAA\300 Design\300.5 Technical\01-Drawing Production\CADD\Drawings\LV-238.dwg Plot Date: 19 August, 2013 - 2:34 PM



Visual Simulation 11 - SH1 Private Residence

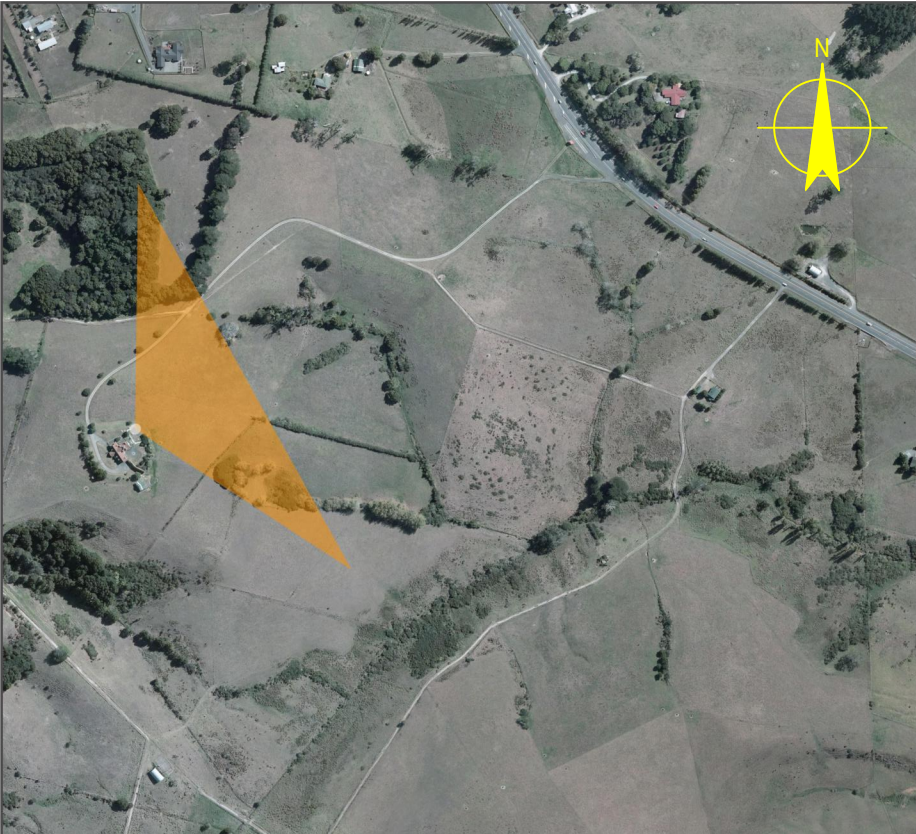
Field of View - 124 degrees Horizontal x 55 degrees Vertical  
Image Projection Method - Rectilinear Perspective

Captured - Canon 5D MarkII with a 24mm lens  
Viewing Distance - A1 230mm, A2 163mm, A3 115mm

Existing View

Camera Height - 1.67m  
Photographed - 14 May 2013 14:53pm  
NZTM 1746807.294, 5971478.810, 81.510

Viewpoint Location



0	30/08/13	RP	MW	TI	ISSUE FOR NOR / CONSENT
AMD	DATE	DESIGN REVIEW	REV'D D. MGR	APP'D A. MGR	PURPOSE OF ISSUE / AMENDMENT



**DISCLAIMER**  
The information shown on this drawing is solely for the purposes of supporting RMA applications for statutory approvals. All information shown is subject to review for compliance with approved consents and the outcomes of final design.

ARA TŪHONO - PŪHOI TO WELLSFORD			
PŪHOI TO WARKWORTH - FOR RMA APPROVALS			
DRAWN BUILDMEDIA	DRAFTING CHECK IH	REVIEWED DISCIPLINE MANAGER MW	APPROVED ALLIANCE MANAGER TI
DESIGNED BUILDMEDIA	DESIGN REVIEW RP		

VISUAL SIMULATION 11 - SH1 PRIVATE RESIDENCE EXISTING 124 DEGREE HORIZONTAL VIEW SHEET 1 OF 2			
SCALE NOT TO SCALE	CONTRACT No PA3748	DRAWING No LV-238	AMDT 0



Plot Date: 19 August, 2013 - 2:32 PM

S:\Further North - PAA\300 Design\300.5 Technical\01-Drawing Production\CADD\Drawings\LV-239.dwg



Visual Simulation 11 - SH1 Private Residence

Field of View - 124 degrees Horizontal x 55 degrees Vertical  
Image Projection Method - Rectilinear Perspective  
Captured - Canon 5D MarkII with a 24mm lens  
Viewing Distance - A1 230mm, A2 163mm, A3 115mm

Proposed View

Camera Height - 1.67m  
Photographed - 14 May 2013 14:53pm  
NZTM 1746807.294, 5971478.810, 81.510

0	30/08/13	RP	MW	TI	ISSUE FOR NOR / CONSENT
AMD	DATE	DESIGN REVIEW	REV'D D. MGR	APP'D A. MGR	PURPOSE OF ISSUE / AMENDMENT



DISCLAIMER  
The information shown on this drawing is solely for the purposes of supporting RMA applications for statutory approvals. All information shown is subject to review for compliance with approved consents and the outcomes of final design.

ARA TŪHONO - PŪHOI TO WELLSFORD			
PŪHOI TO WARKWORTH - FOR RMA APPROVALS			
DRAWN DESIGNED BUILDMEDIA	DRAFTING CHECK IH DESIGN REVIEW RP	REVIEWED DISCIPLINE MANAGER MW	APPROVED ALLIANCE MANAGER TI

VISUAL SIMULATION 11 - SH1 PRIVATE RESIDENCE INDICATIVE 124 DEGREE HORIZONTAL VIEW SHEET 2 OF 2			
SCALE NOT TO SCALE	CONTRACT No PA3748	DRAWING No LV-239	AMDT 0