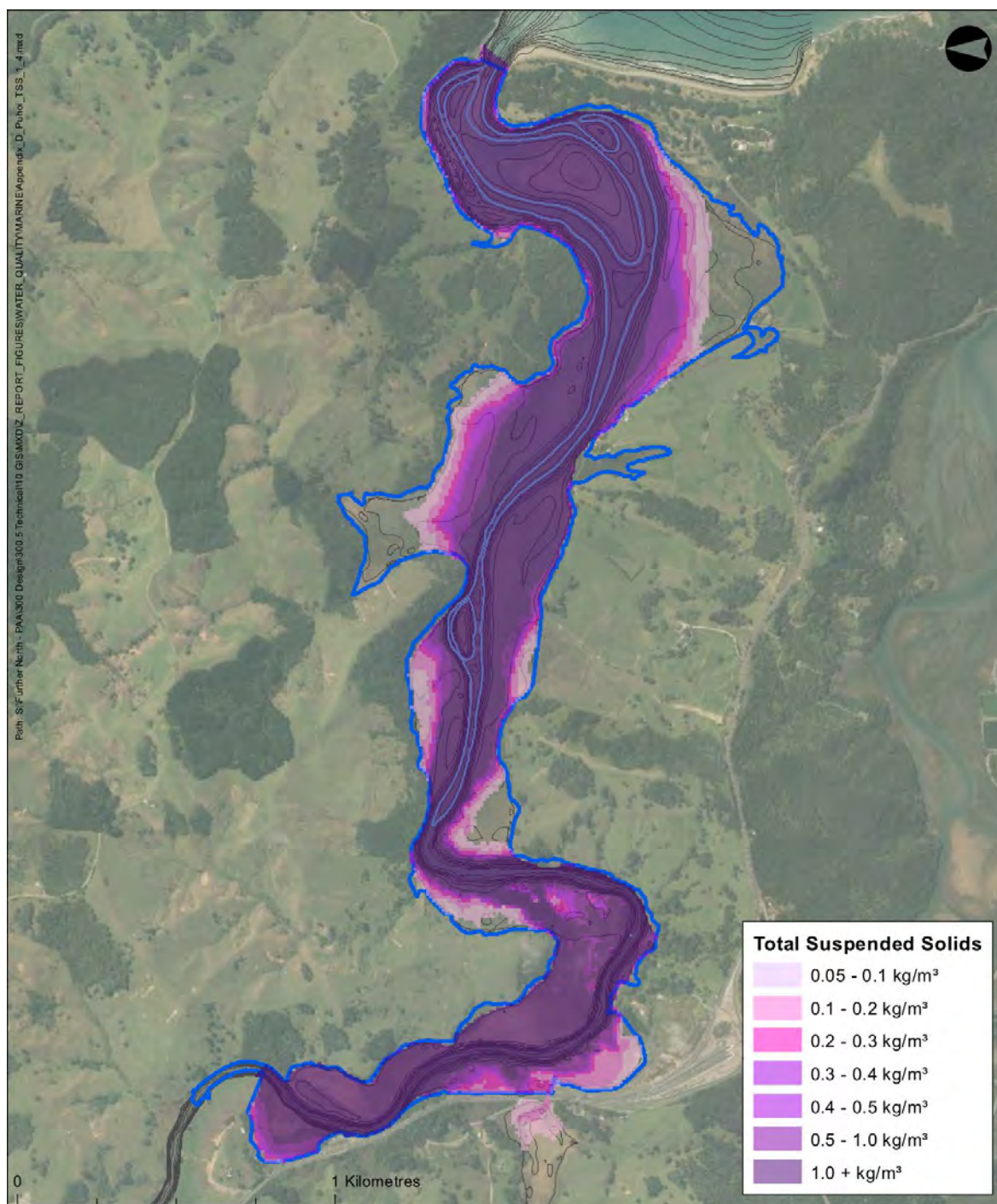


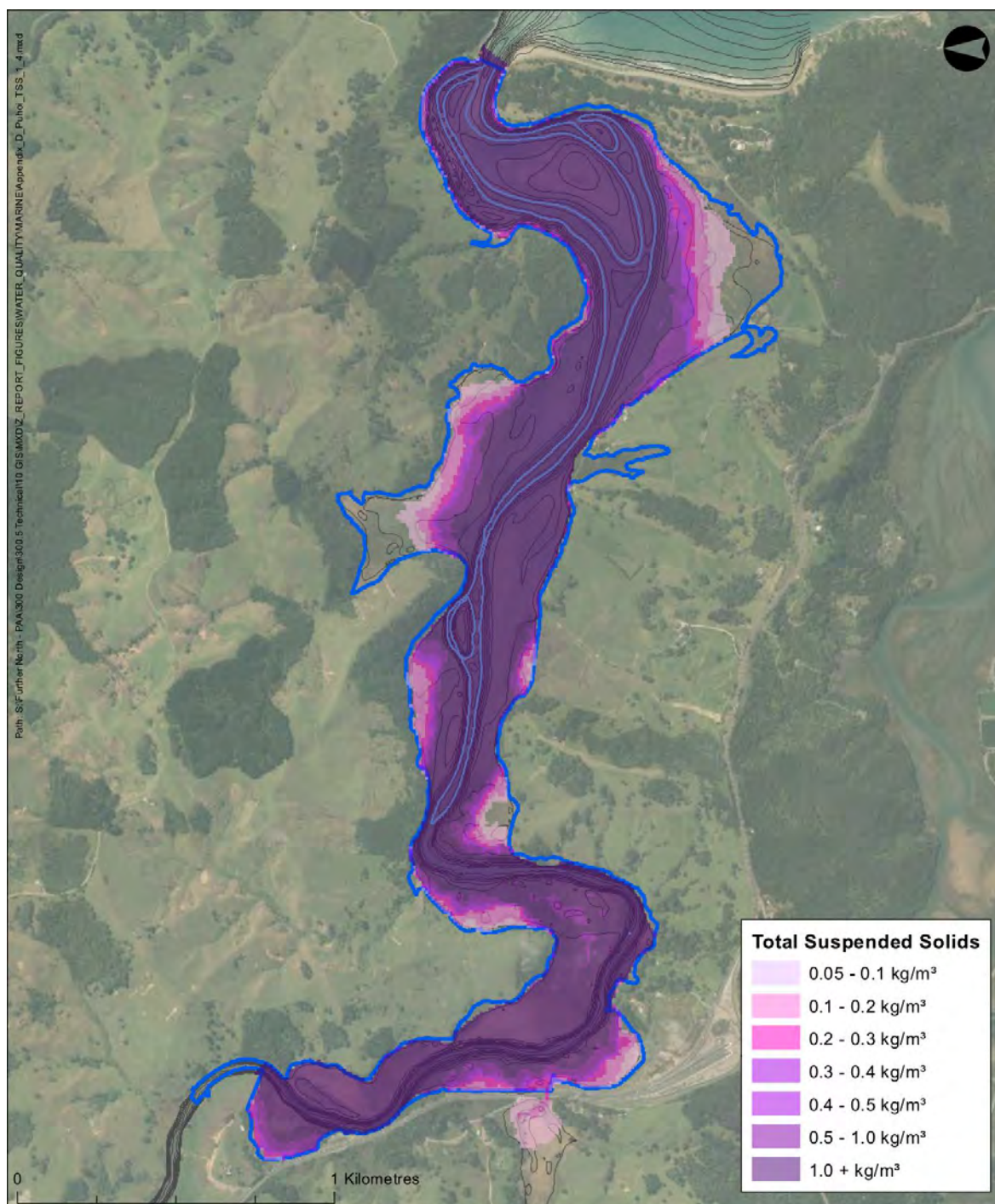
Appendix D Pūhoi TSS plans



- Mean High Water Springs
- Lowest Astronomical Tide
- Aquaculture Farms

Puhoi Estuary Background Peak TSS
Calm Wind Conditions, 10Year (ARI) Rainfall Event

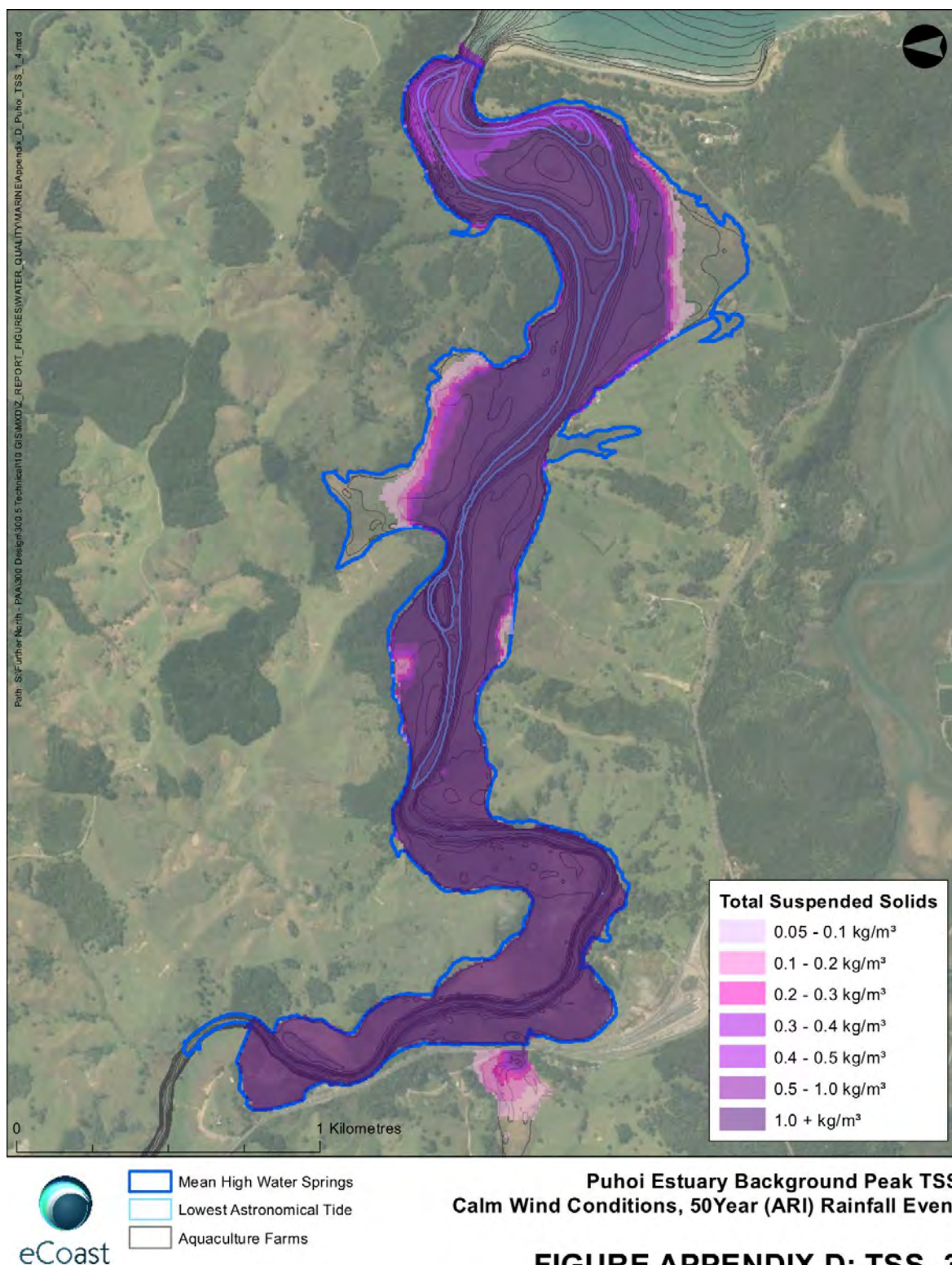
FIGURE APPENDIX D: TSS -1

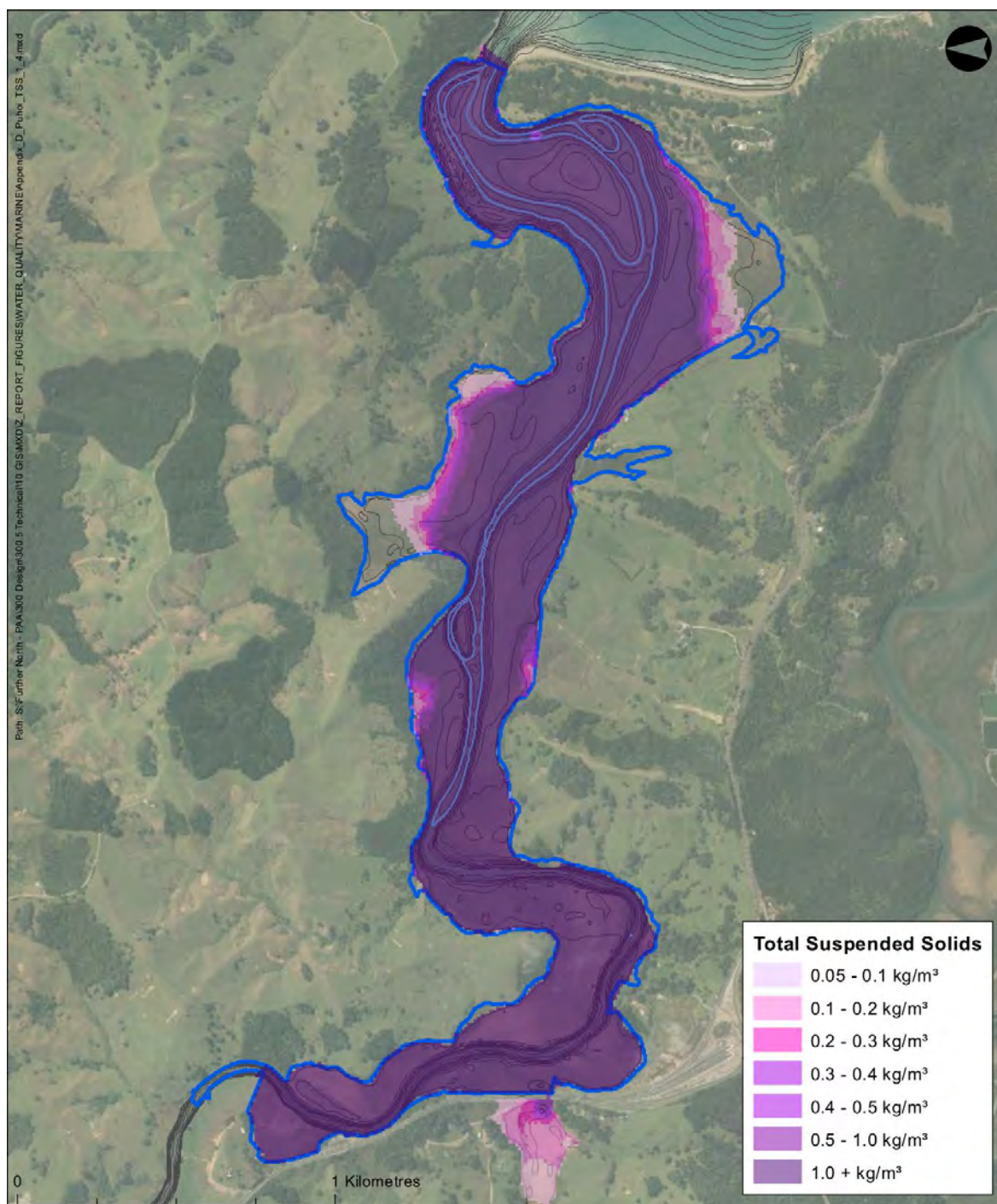


- Mean High Water Springs
- Lowest Astronomical Tide
- Aquaculture Farms

**Puhoi Estuary Background Peak TSS
ENE Wind Conditions, 10Year (ARI) Rainfall Event**

FIGURE APPENDIX D: TSS -2

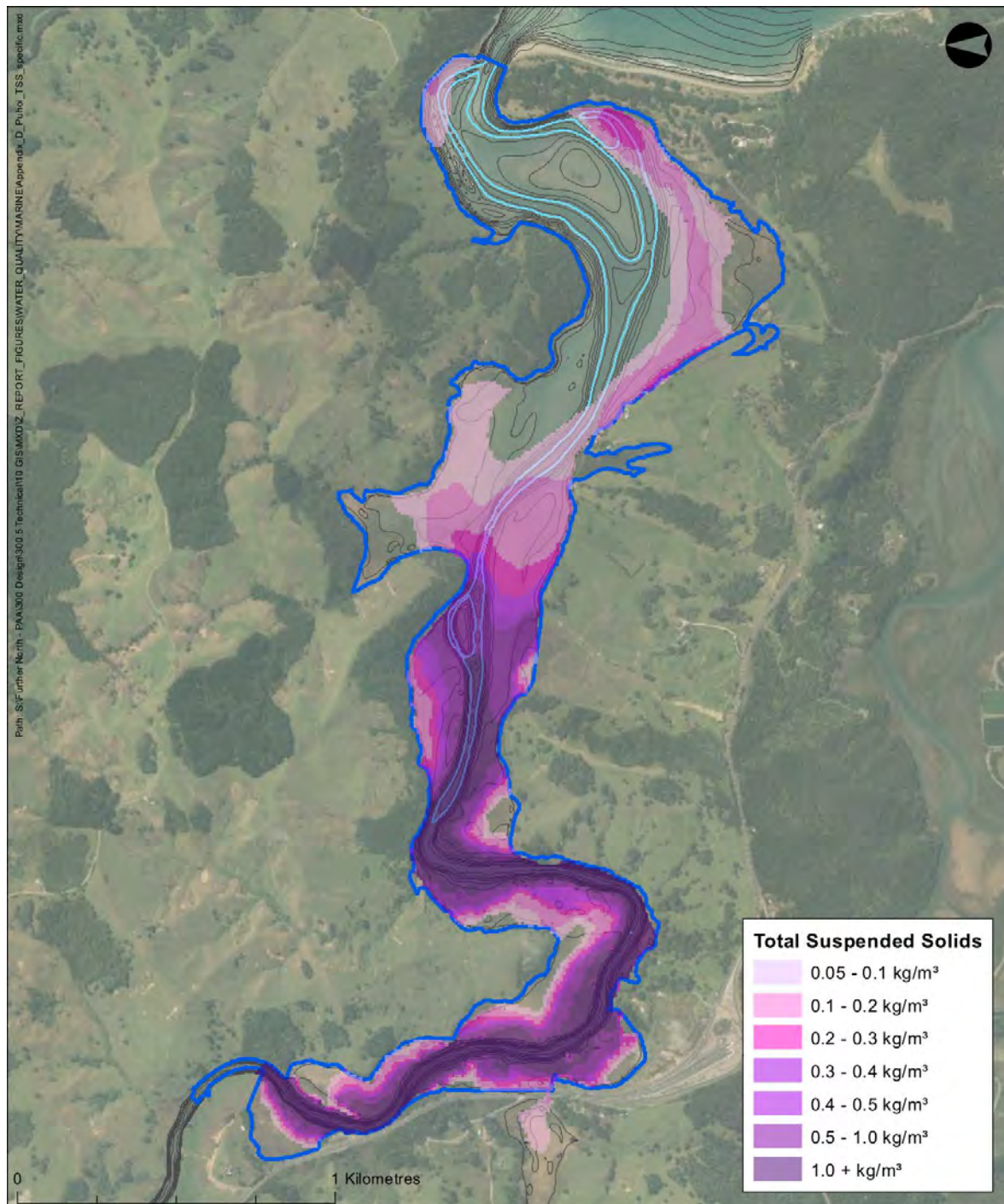




- Mean High Water Springs
- Lowest Astronomical Tide
- Aquaculture Farms

**Puhoi Estuary Background Peak TSS
ENE Wind Conditions, 50Year (ARI) Rainfall Event**

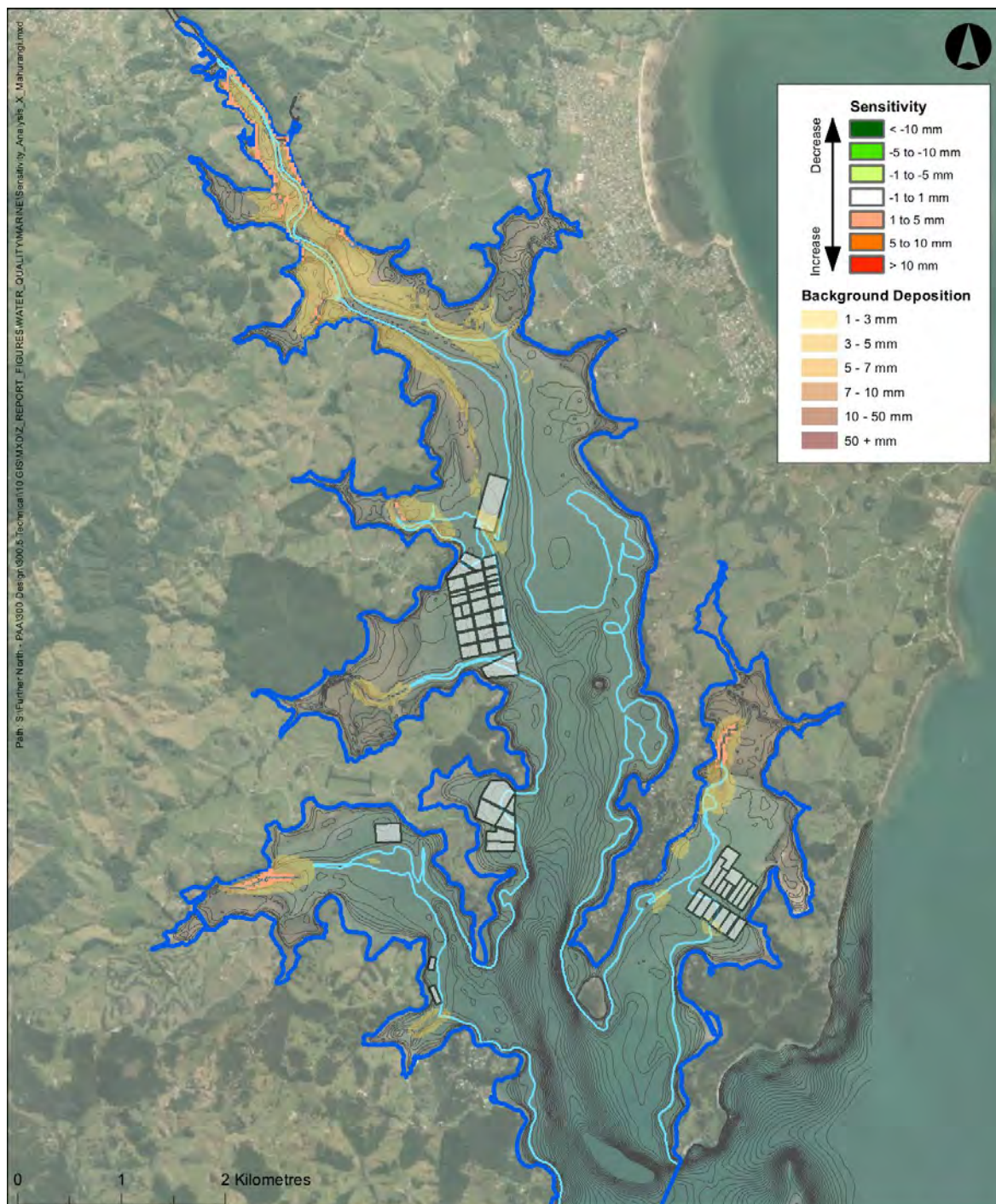
FIGURE APPENDIX D: TSS -4



- Mean High Water Springs
- Lowest Astronomical Tide
- Aquaculture Farms

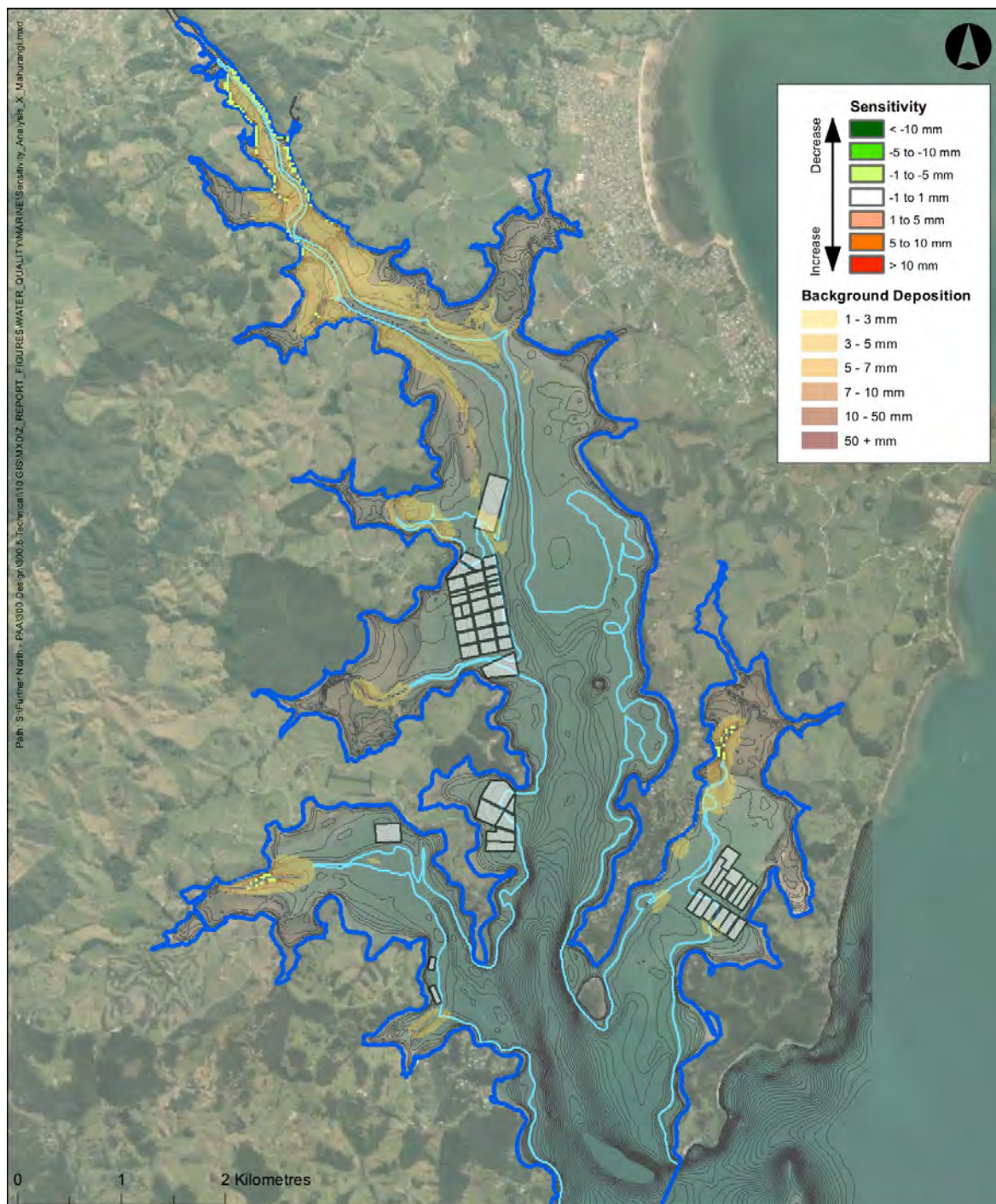
**Puhoi Estuary Short Construction Period TSS
1 Days Following Peak of the Rainfall Event
ENE Wind Conditions, 50Year (ARI) Rainfall Event
FIGURE APPENDIX D: TSS -5**

Appendix E Sensitivity analysis plans



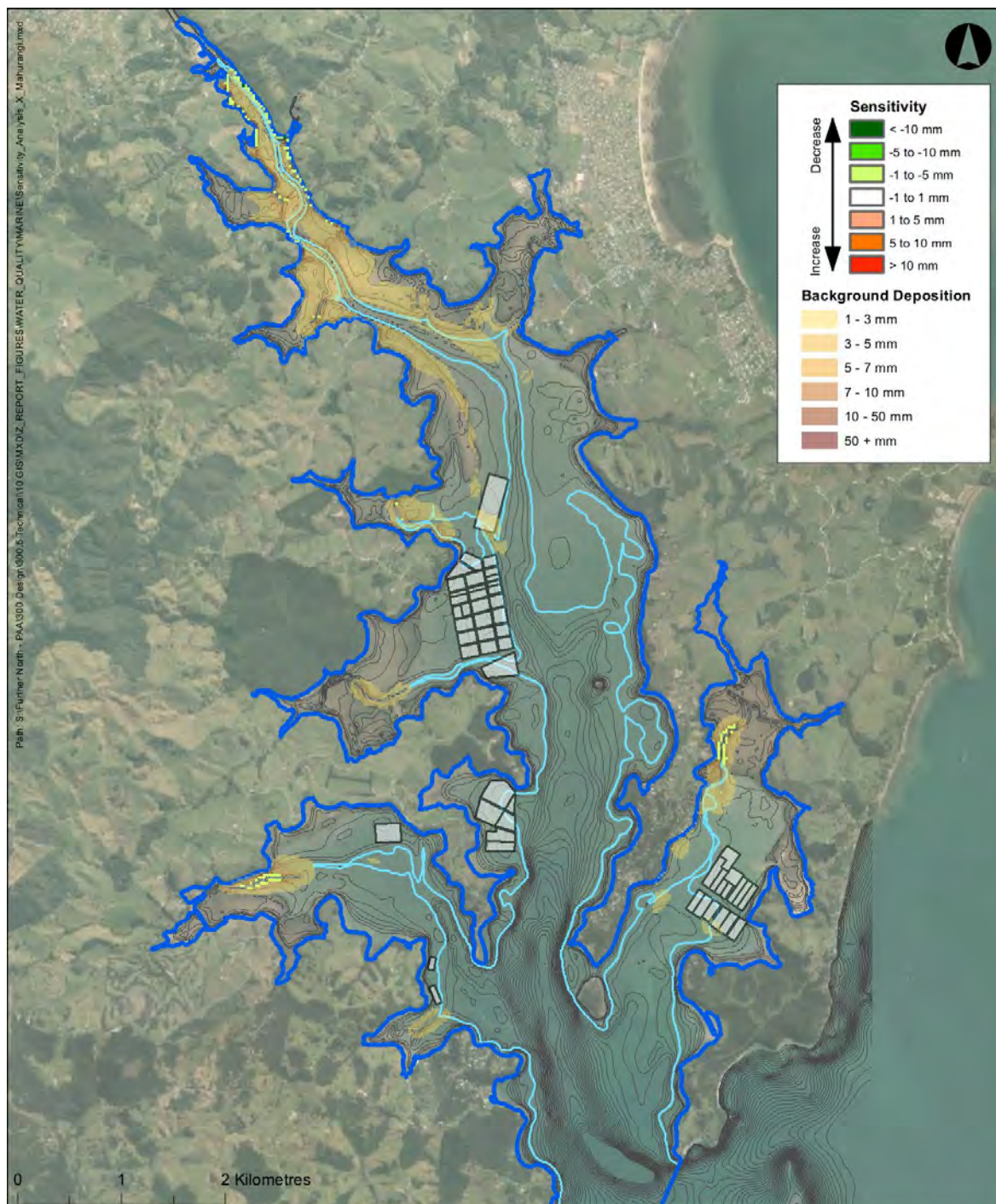
- Mean High Water Springs
- Lowest Astronomical Tide
- Aquaculture Farms

Mahurangi Sensitivity Analysis
10 Year (ARI) Rainfall Event, Calm Wind Conditions
Lower Bulk Density
FIGURE APPENDIX E: SENSITIVITY 1



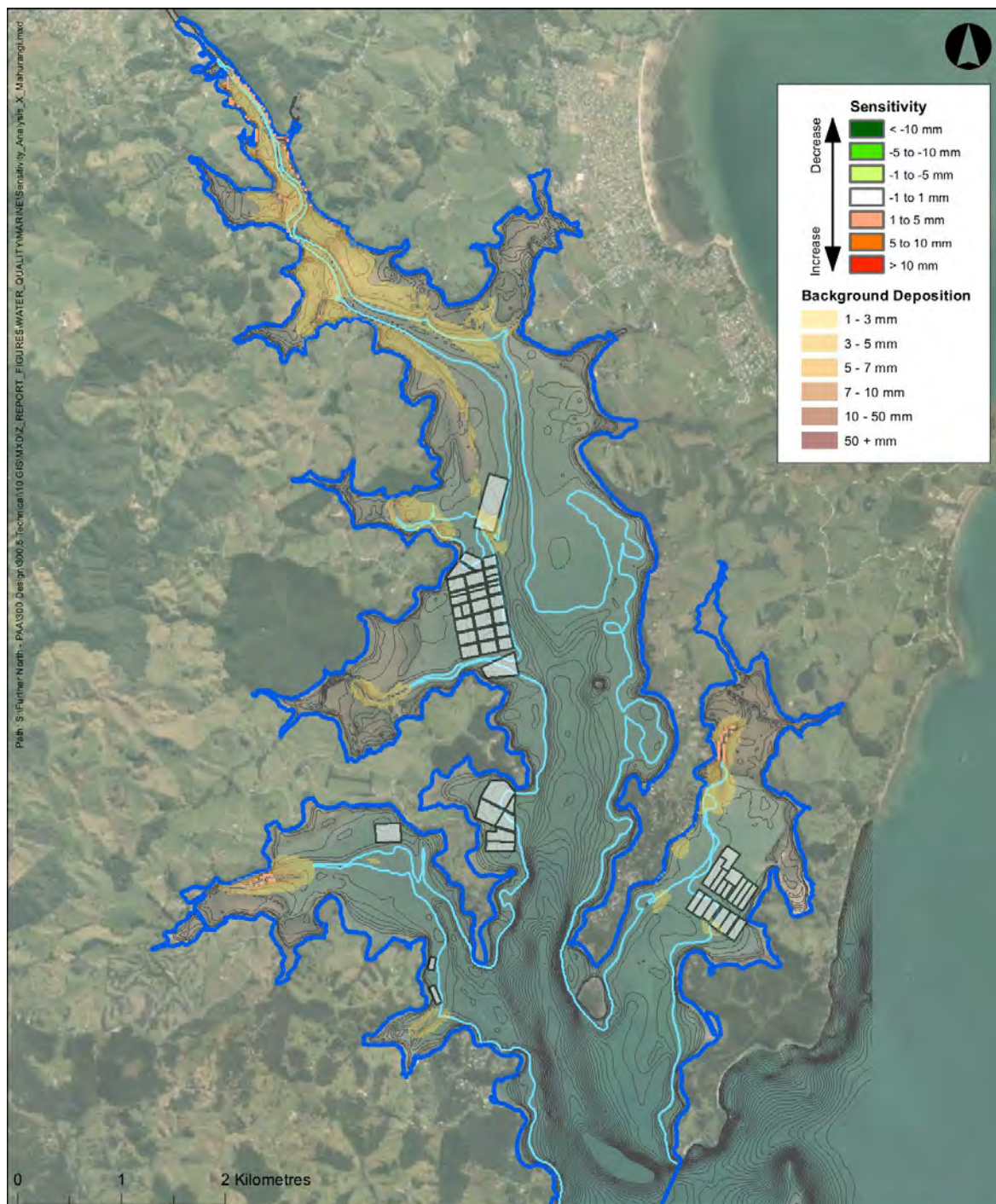
- Mean High Water Springs
- Lowest Astronomical Tide
- Aquaculture Farms

Mahurangi Sensitivity Analysis
10 Year (ARI) Rainfall Event, Calm Wind Conditions
Higher Bulk Density
FIGURE APPENDIX E: SENSITIVITY 2



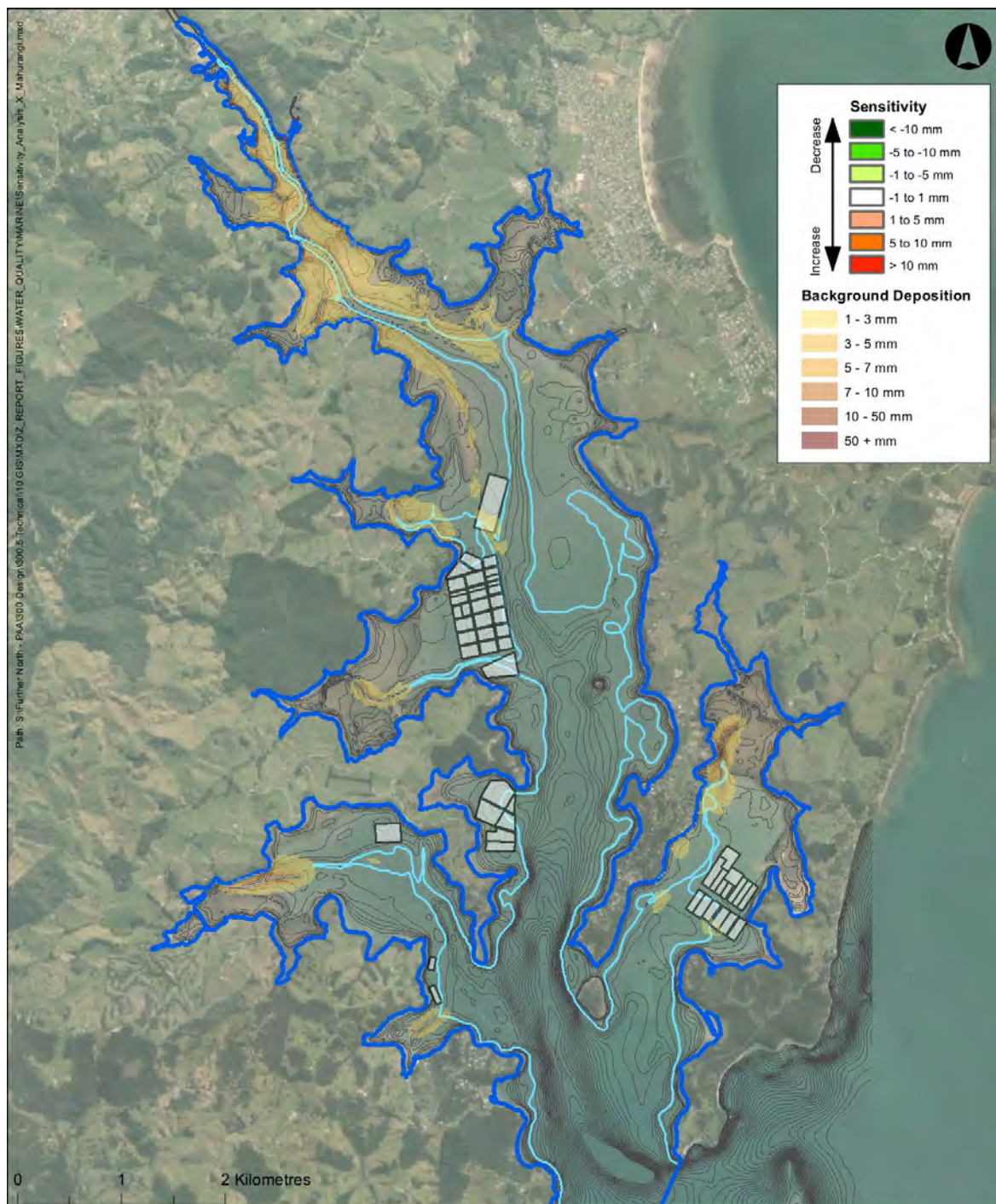
- Mean High Water Springs
- Lowest Astronomical Tide
- Aquaculture Farms

Mahurangi Sensitivity Analysis
10 Year (ARI) Rainfall Event, Calm Wind Conditions
Lower Maximum Settling Velocity
FIGURE APPENDIX E: SENSITIVITY 3



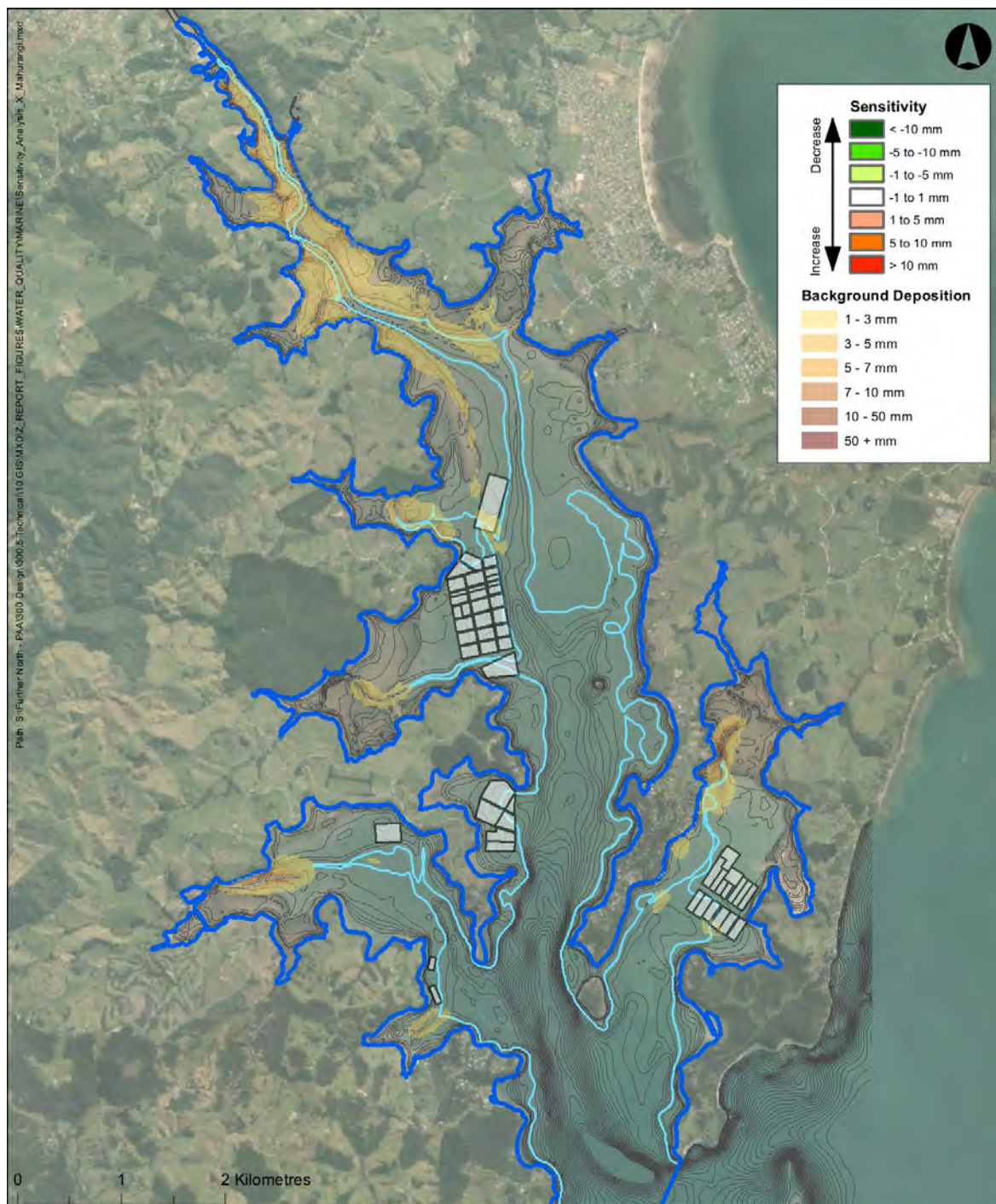
- Mean High Water Springs
- Lowest Astronomical Tide
- Aquaculture Farms

Mahurangi Sensitivity Analysis
10 Year (ARI) Rainfall Event, Calm Wind Conditions
Higher Maximum Settling Velocity
FIGURE APPENDIX E: SENSITIVITY 4



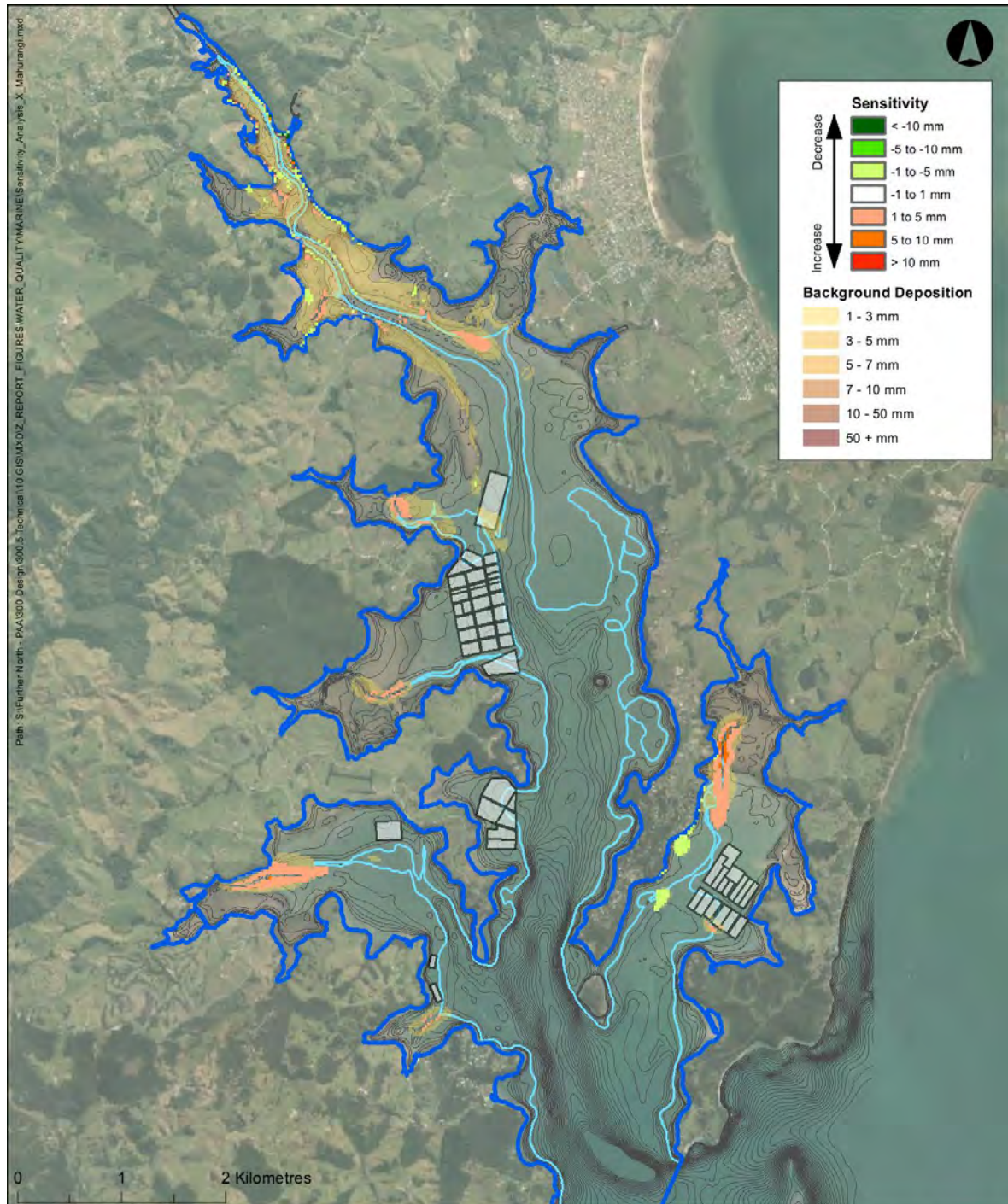
- Mean High Water Springs
- Lowest Astronomical Tide
- Aquaculture Farms

Mahurangi Sensitivity Analysis
10 Year (ARI) Rainfall Event, Calm Wind Conditions
Lower Bed Shear Stress Erosion Threshold
FIGURE APPENDIX E: SENSITIVITY 5



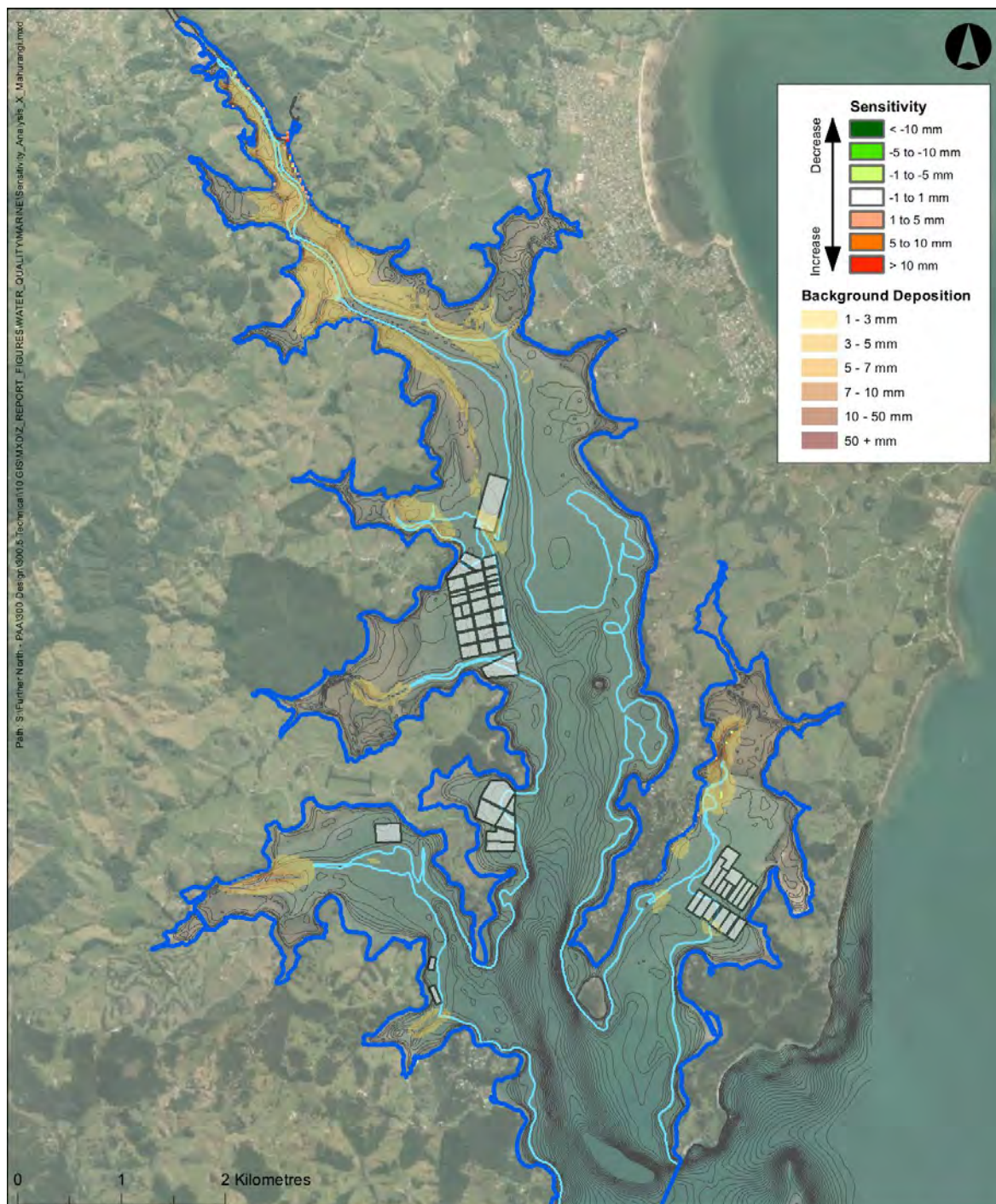
- Mean High Water Springs
- Lowest Astronomical Tide
- Aquaculture Farms

Mahurangi Sensitivity Analysis
10 Year (ARI) Rainfall Event, Calm Wind Conditions
Higher Bed Shear Stress Erosion Threshold
FIGURE APPENDIX E: SENSITIVITY 6



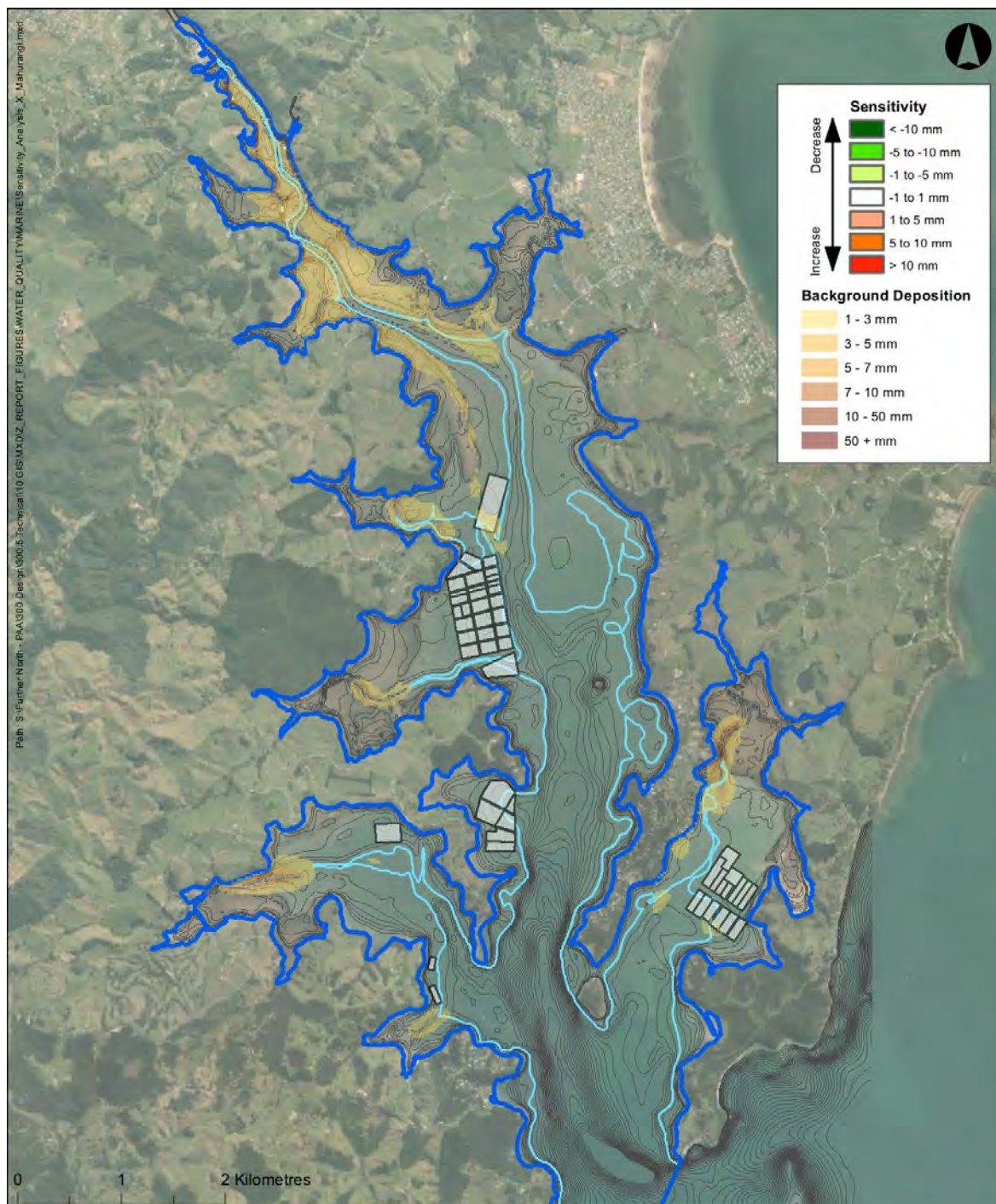
- Mean High Water Springs
- Lowest Astronomical Tide
- Aquaculture Farms

Mahurangi Sensitivity Analysis
10 Year (ARI) Rainfall Event, Calm Wind Conditions
Peak Inputs at Neap Tide
FIGURE APPENDIX E: SENSITIVITY 7



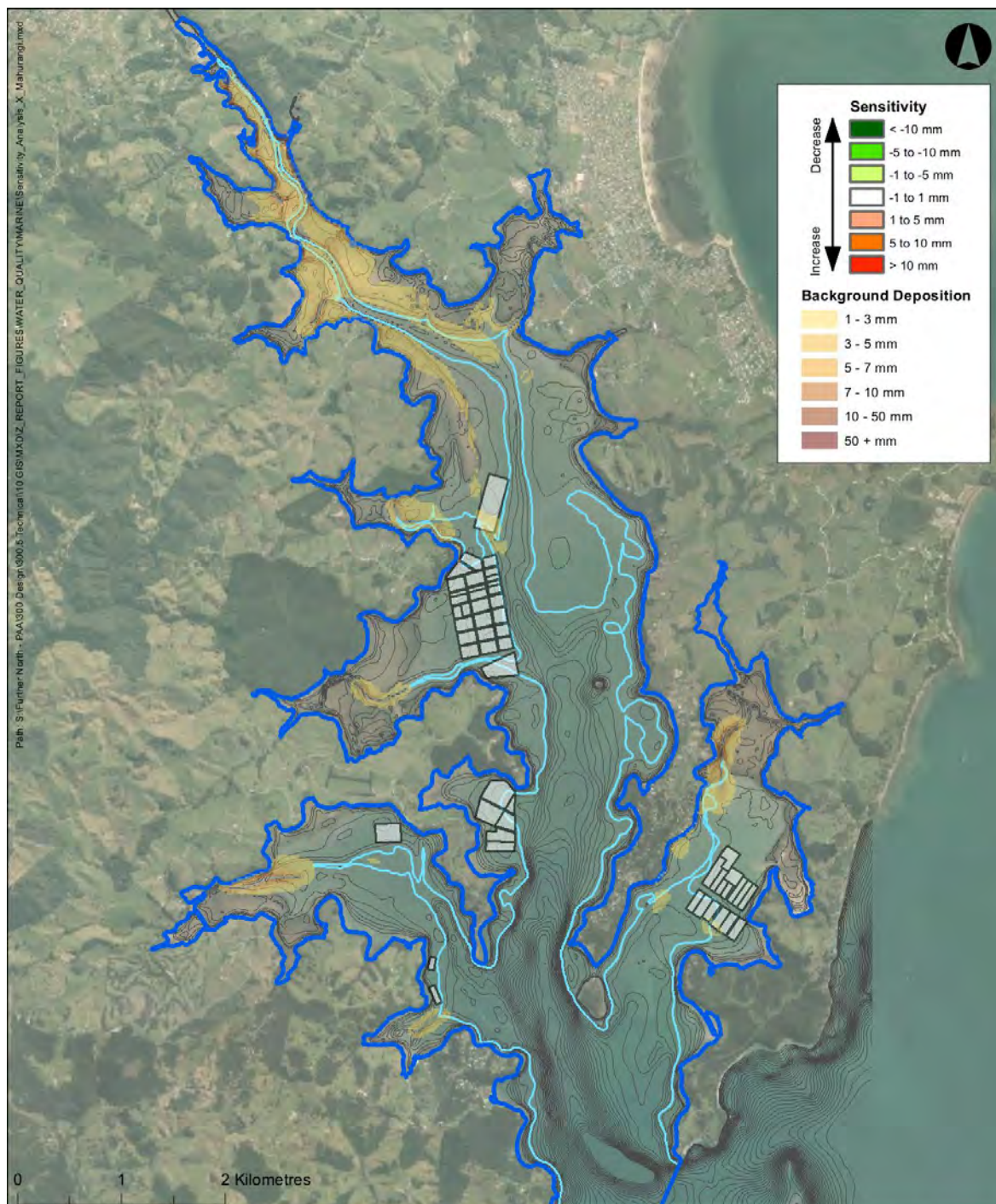
- Mean High Water Springs
- Lowest Astronomical Tide
- Aquaculture Farms

Mahurangi Sensitivity Analysis
10 Year (ARI) Rainfall Event, Calm Wind Conditions
Peak Inputs at Spring Tide
FIGURE APPENDIX E: SENSITIVITY 8



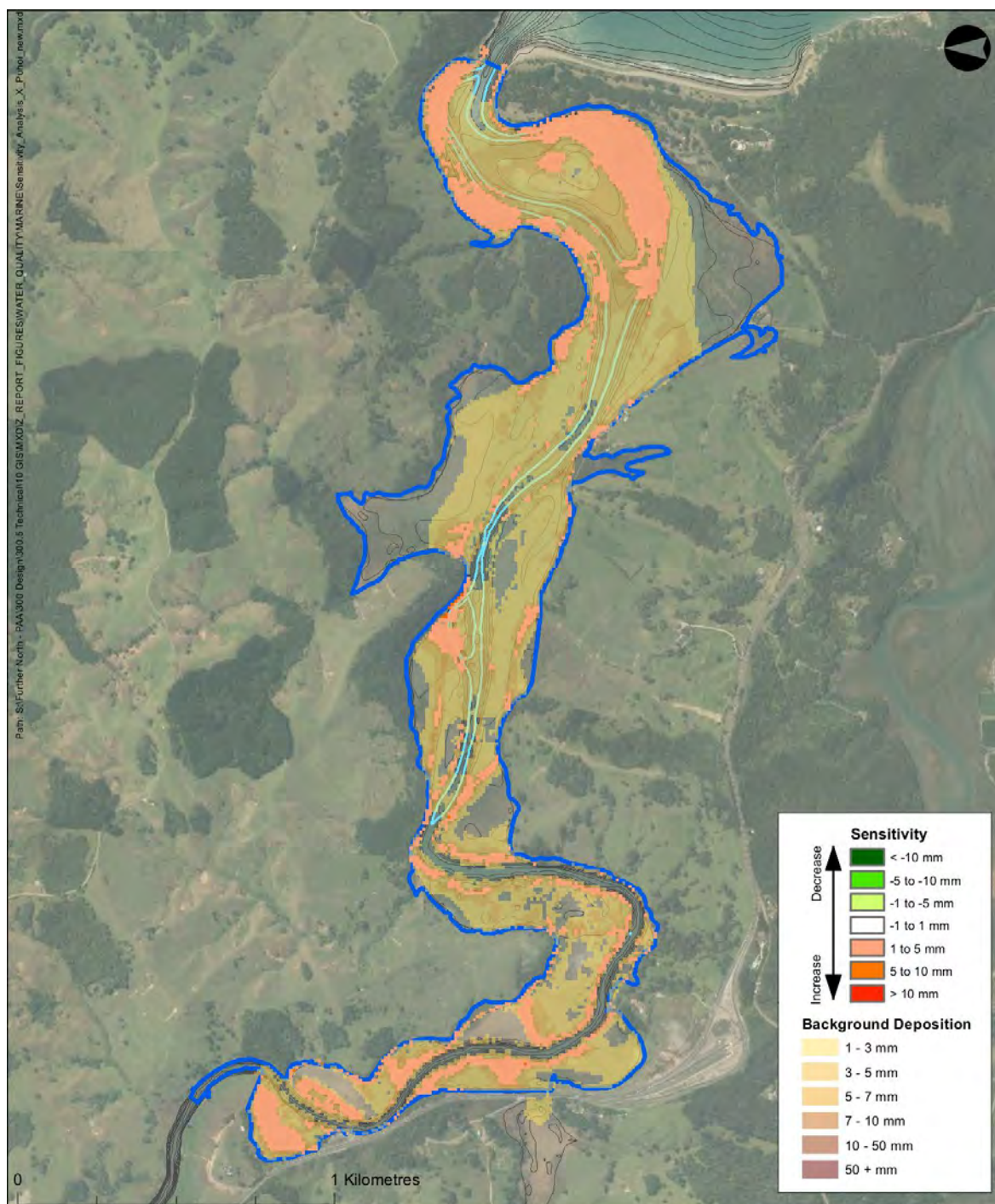
- Mean High Water Springs
- Lowest Astronomical Tide
- Aquaculture Farms

Mahurangi Sensitivity Analysis
10 Year (ARI) Rainfall Event, Calm Wind Conditions
Lower Bed Shear Stress Deposition Threshold
FIGURE APPENDIX E: SENSITIVITY 9



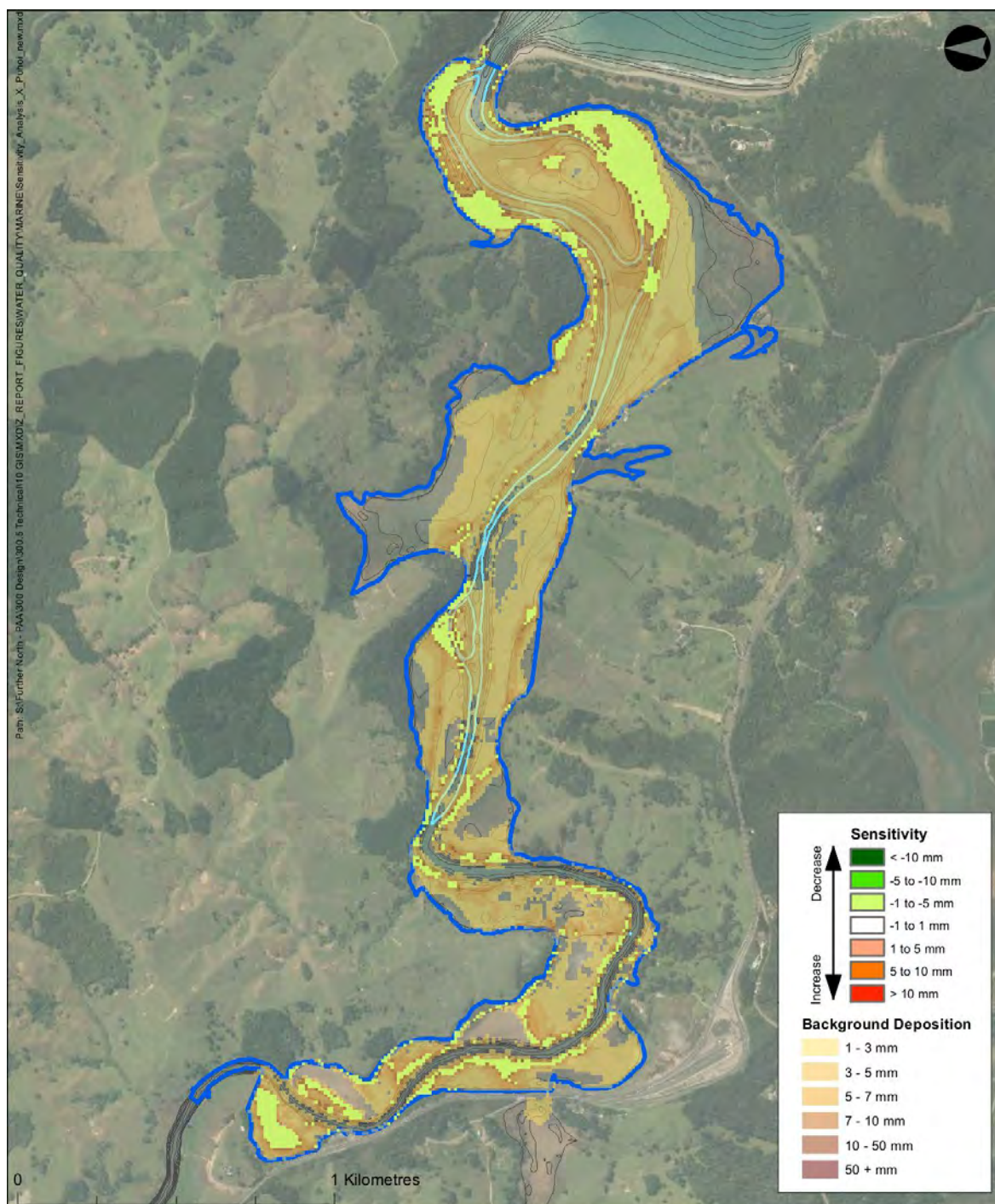
- Mean High Water Springs
- Lowest Astronomical Tide
- Aquaculture Farms

Mahurangi Sensitivity Analysis
10 Year (ARI) Rainfall Event, Calm Wind Conditions
Higher Bed Shear Stress Deposition Threshold
FIGURE APPENDIX E: SENSITIVITY 10



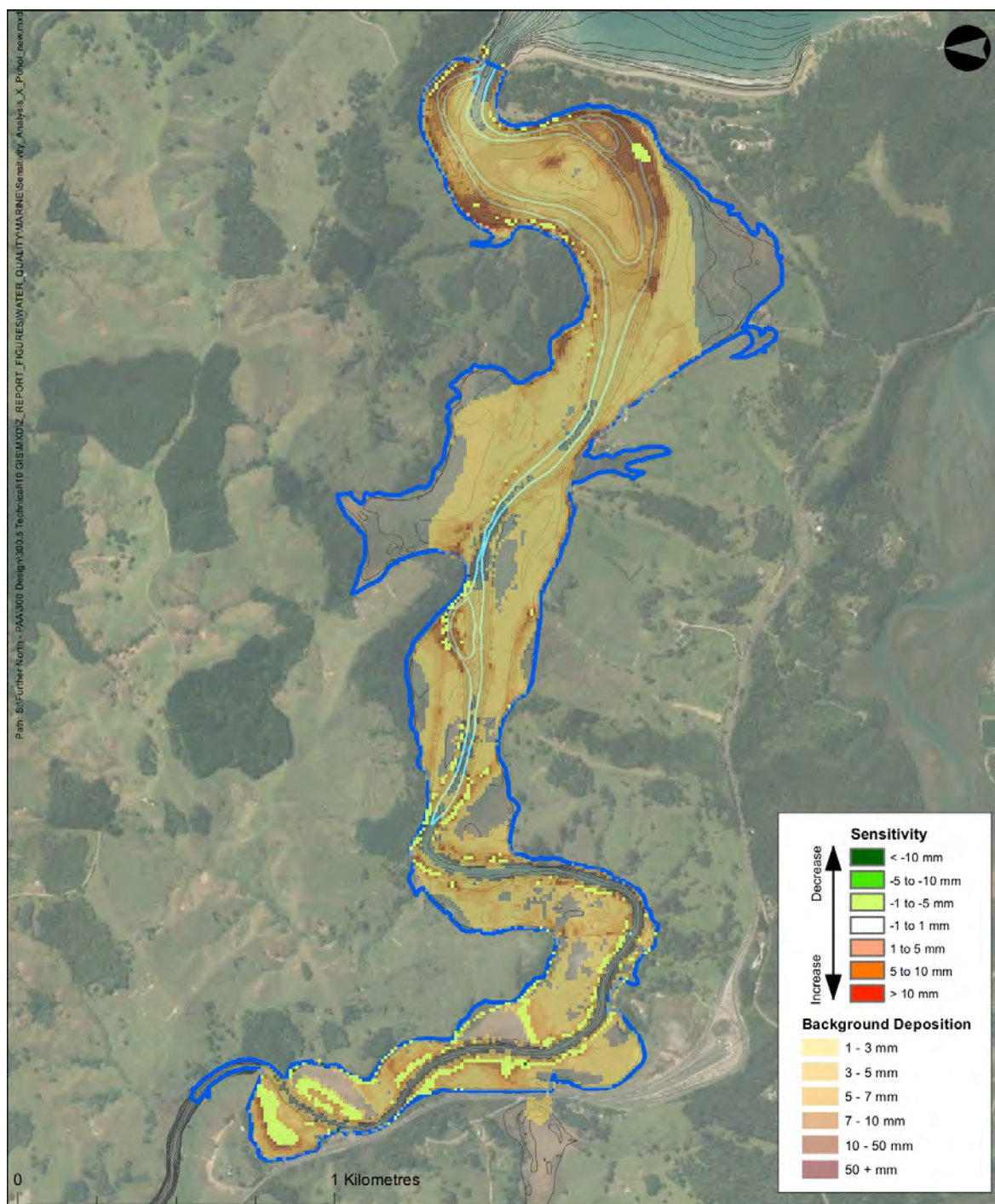
- Mean High Water Springs
- Lowest Astronomical Tide
- Aquaculture Farms

Puhoi Sensitivity Analysis
10 Year (ARI) Rainfall Event, Calm Wind Conditions
Lower Bulk Density
FIGURE APPENDIX E: SENSITIVITY 11



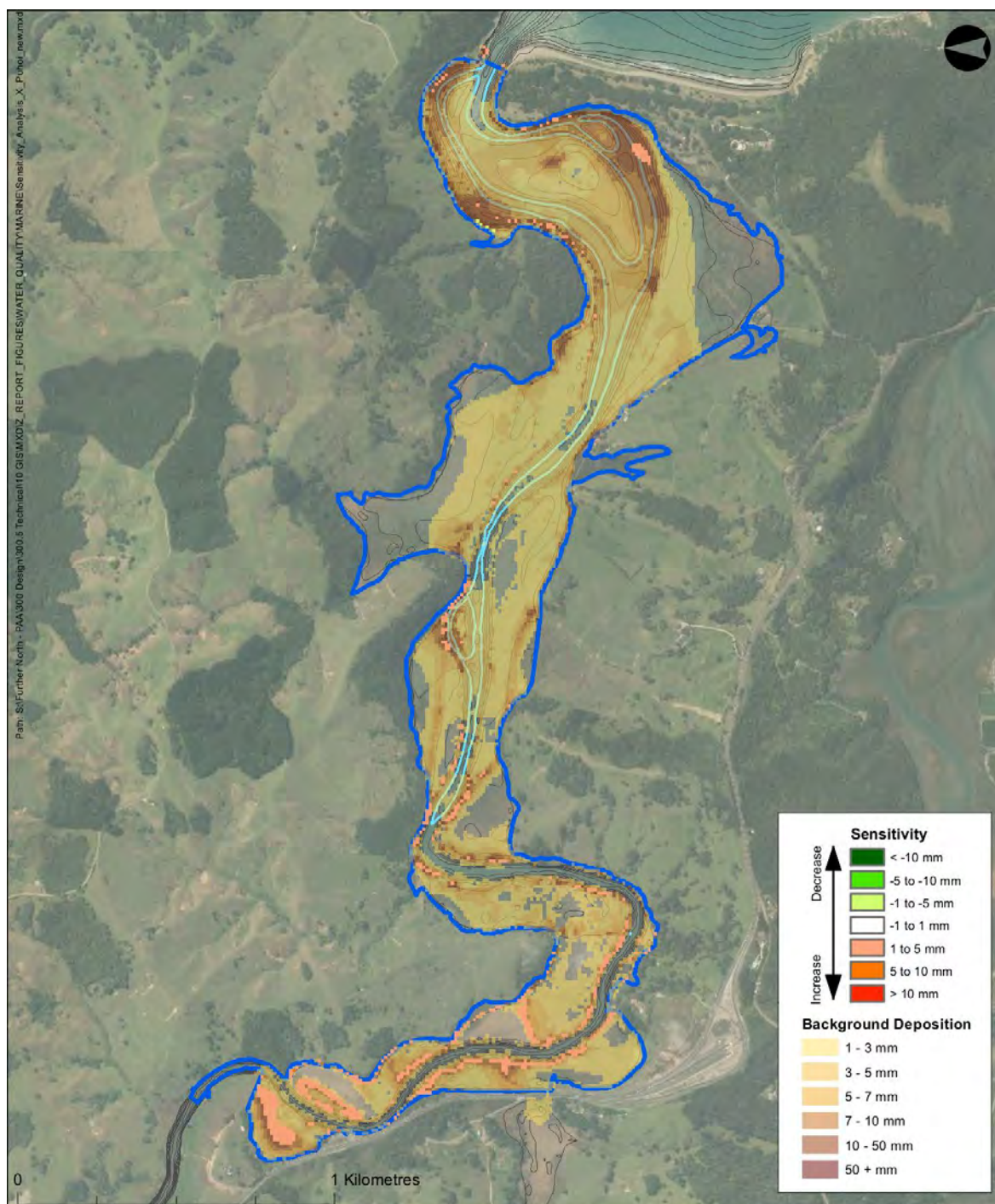
- Mean High Water Springs
- Lowest Astronomical Tide
- Aquaculture Farms

Puhoi Sensitivity Analysis
10 Year (ARI) Rainfall Event, Calm Wind Conditions
Higher Bulk Density
FIGURE APPENDIX E: SENSITIVITY 12



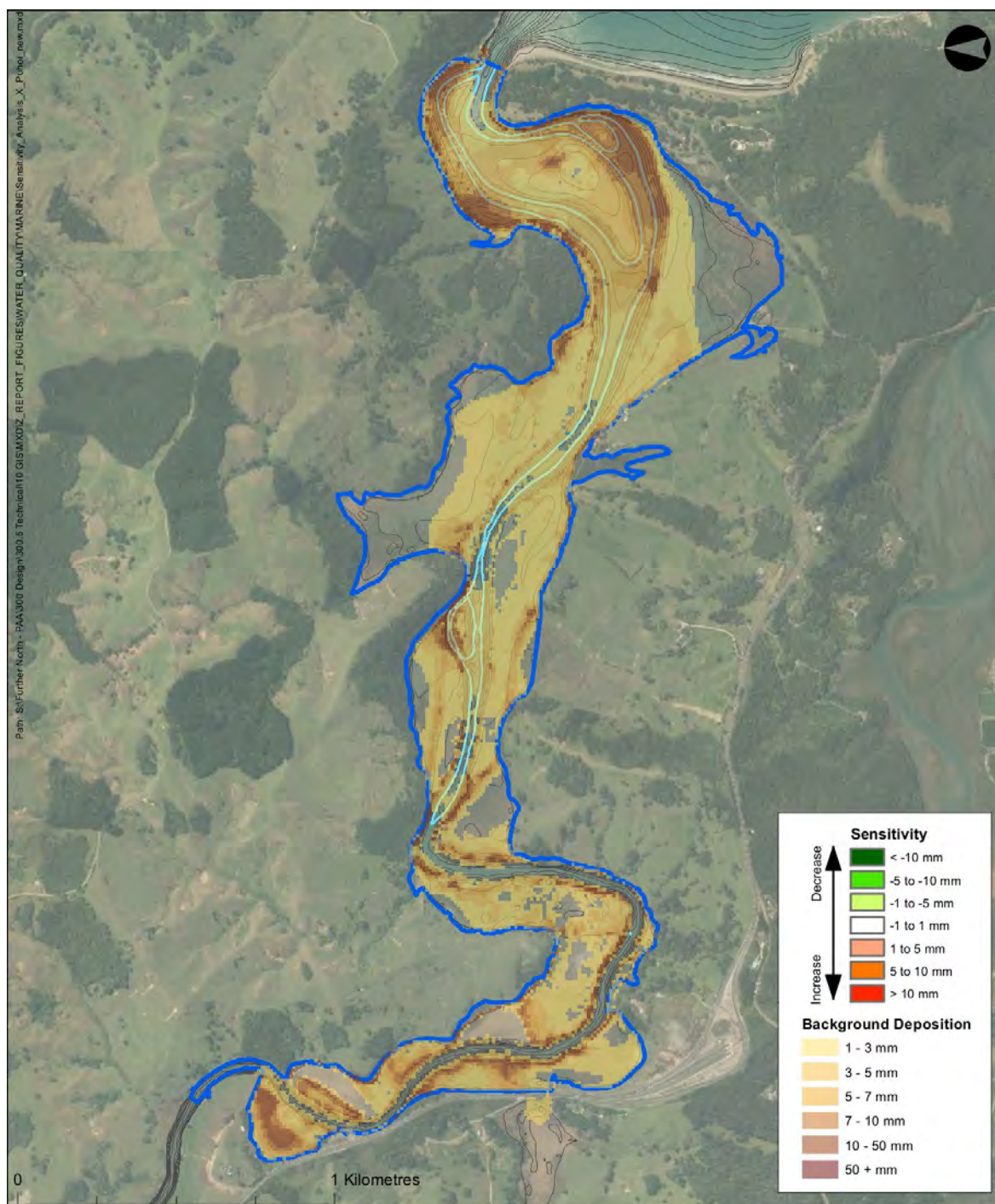
- Mean High Water Springs
- Lowest Astronomical Tide
- Aquaculture Farms

Puhoi Sensitivity Analysis
10 Year (ARI) Rainfall Event, Calm Wind Conditions
Lower Maximum Settling Velocity
FIGURE APPENDIX E: SENSITIVITY 13



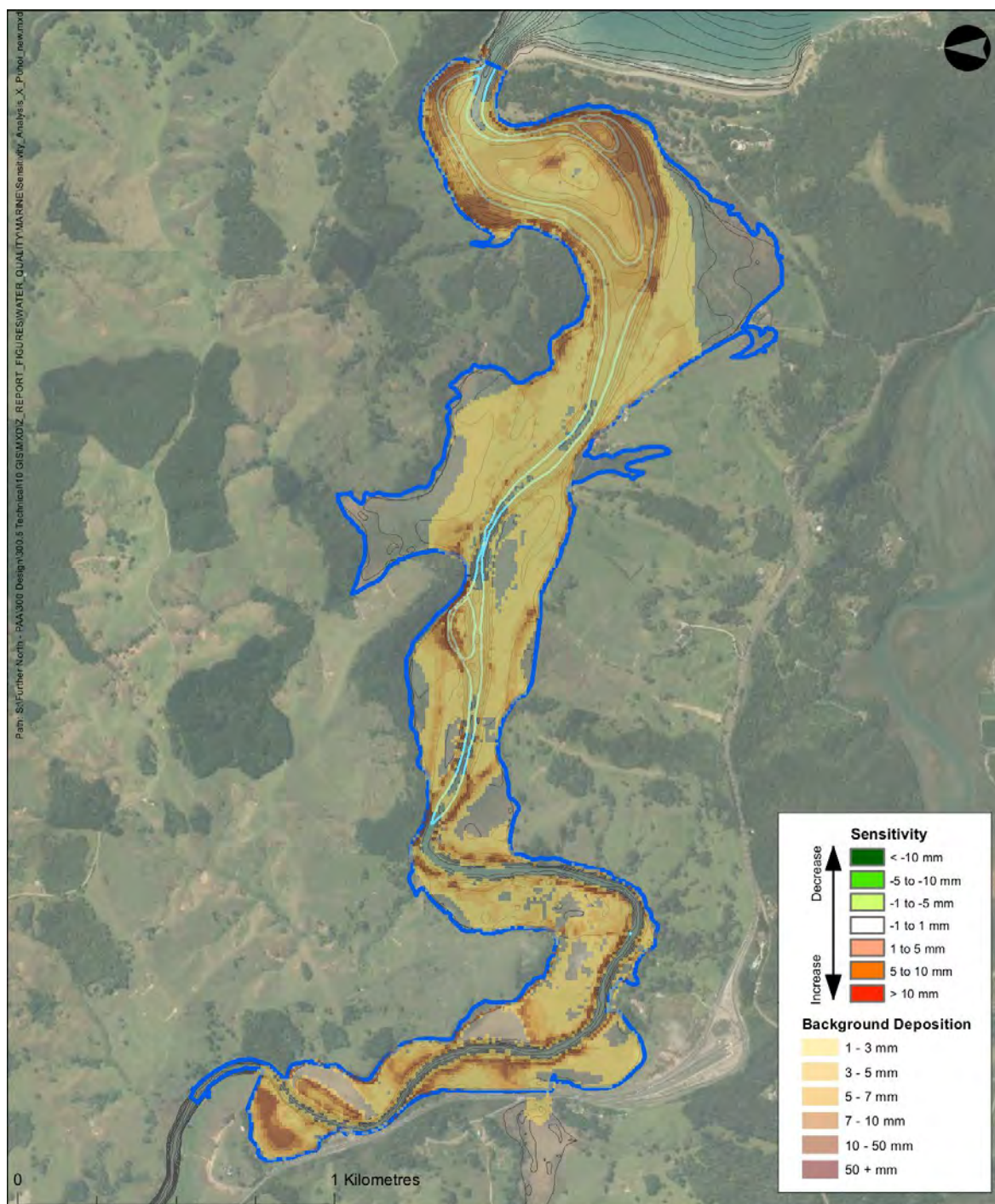
- Mean High Water Springs
- Lowest Astronomical Tide
- Aquaculture Farms

Puhoi Sensitivity Analysis
10 Year (ARI) Rainfall Event, Calm Wind Conditions
Higher Maximum Settling Velocity
FIGURE APPENDIX E: SENSITIVITY 14



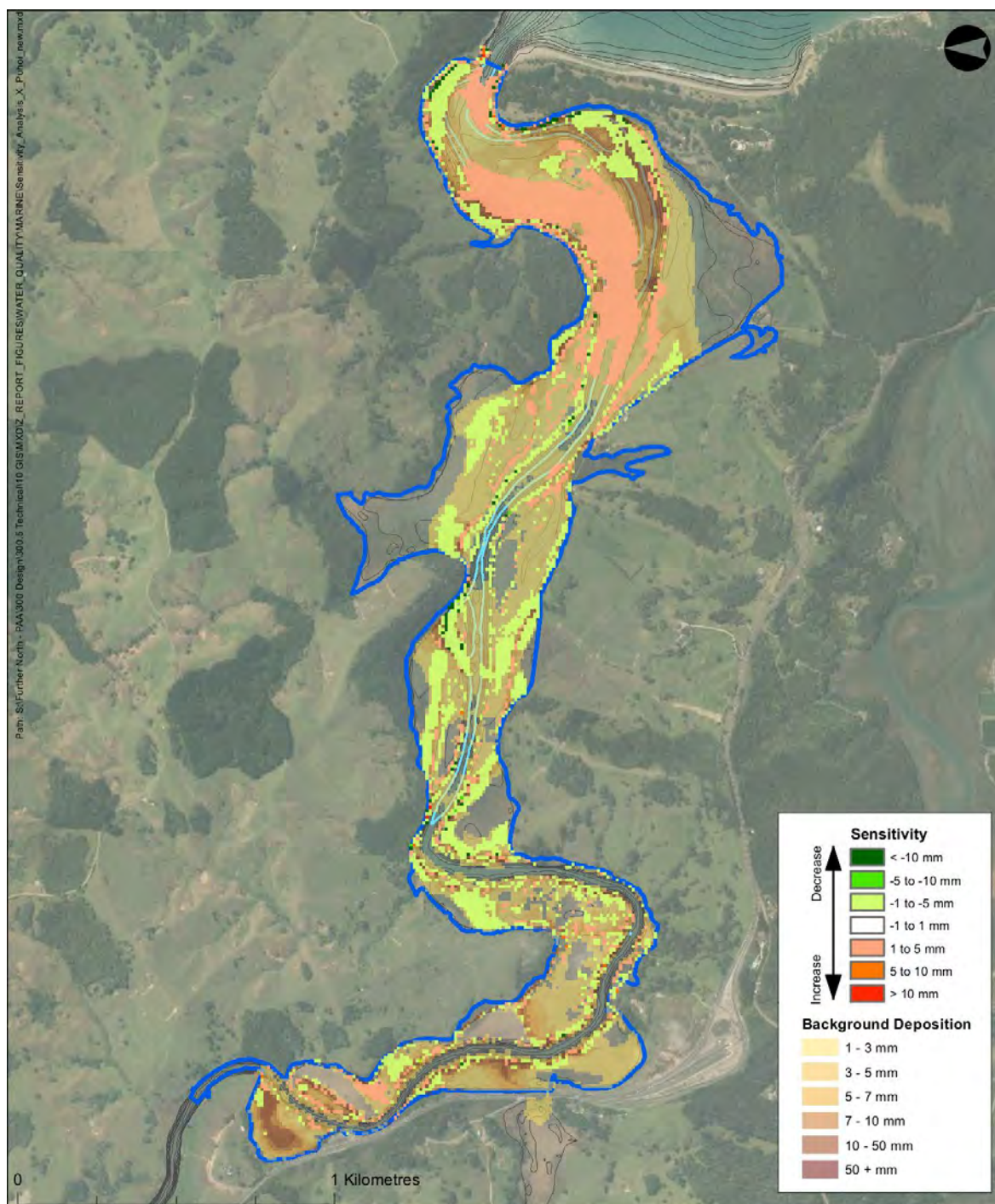
- Mean High Water Springs
- Lowest Astronomical Tide
- Aquaculture Farms

Puhoi Sensitivity Analysis
10 Year (ARI) Rainfall Event, Calm Wind Conditions
Lower Bed Shear Stress Erosion Threshold
FIGURE APPENDIX E: SENSITIVITY 15



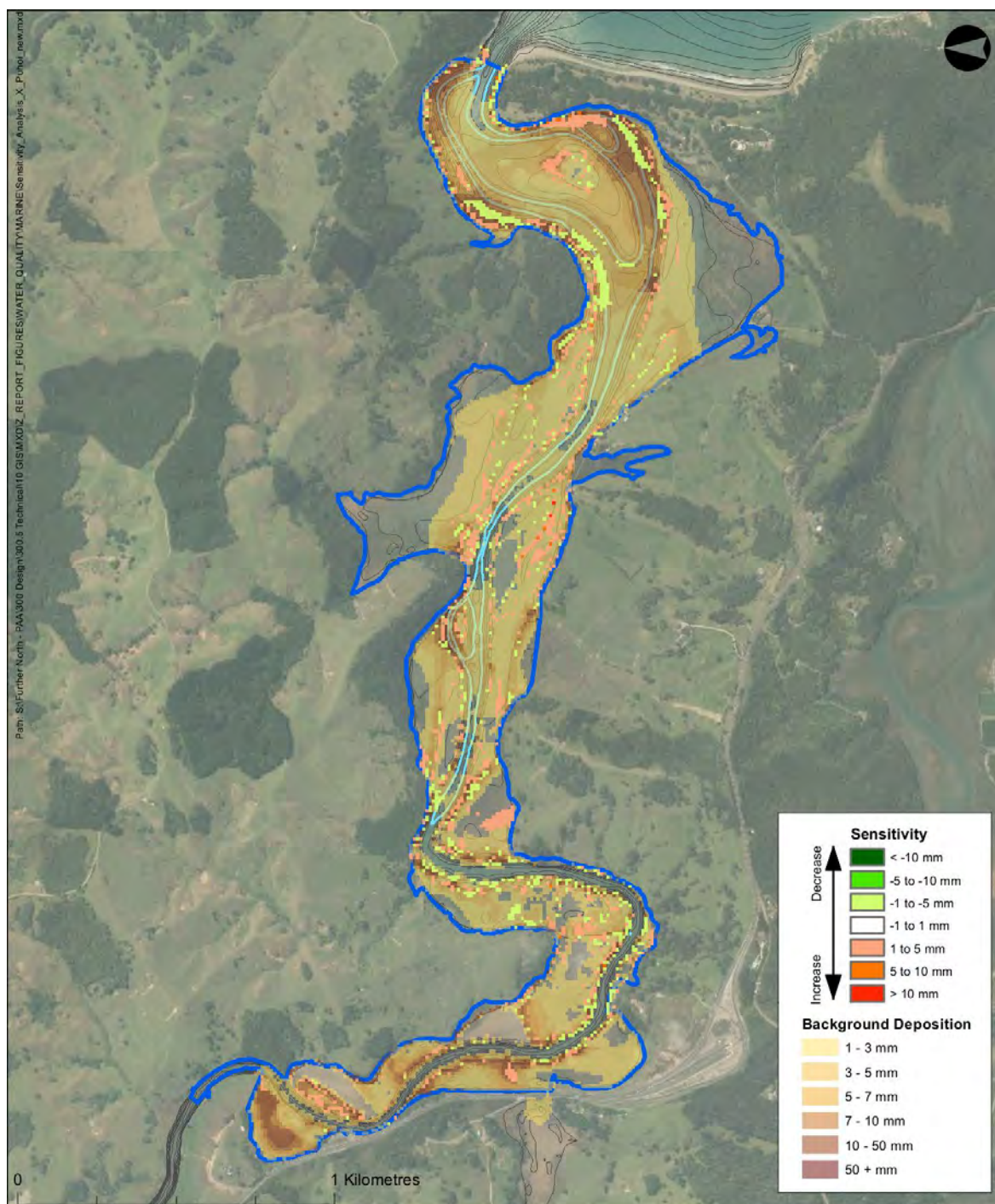
- Mean High Water Springs
- Lowest Astronomical Tide
- Aquaculture Farms

Puhoi Sensitivity Analysis
10 Year (ARI) Rainfall Event, Calm Wind Conditions
Higher Bed Shear Stress Erosion Threshold
FIGURE APPENDIX E: SENSITIVITY 16



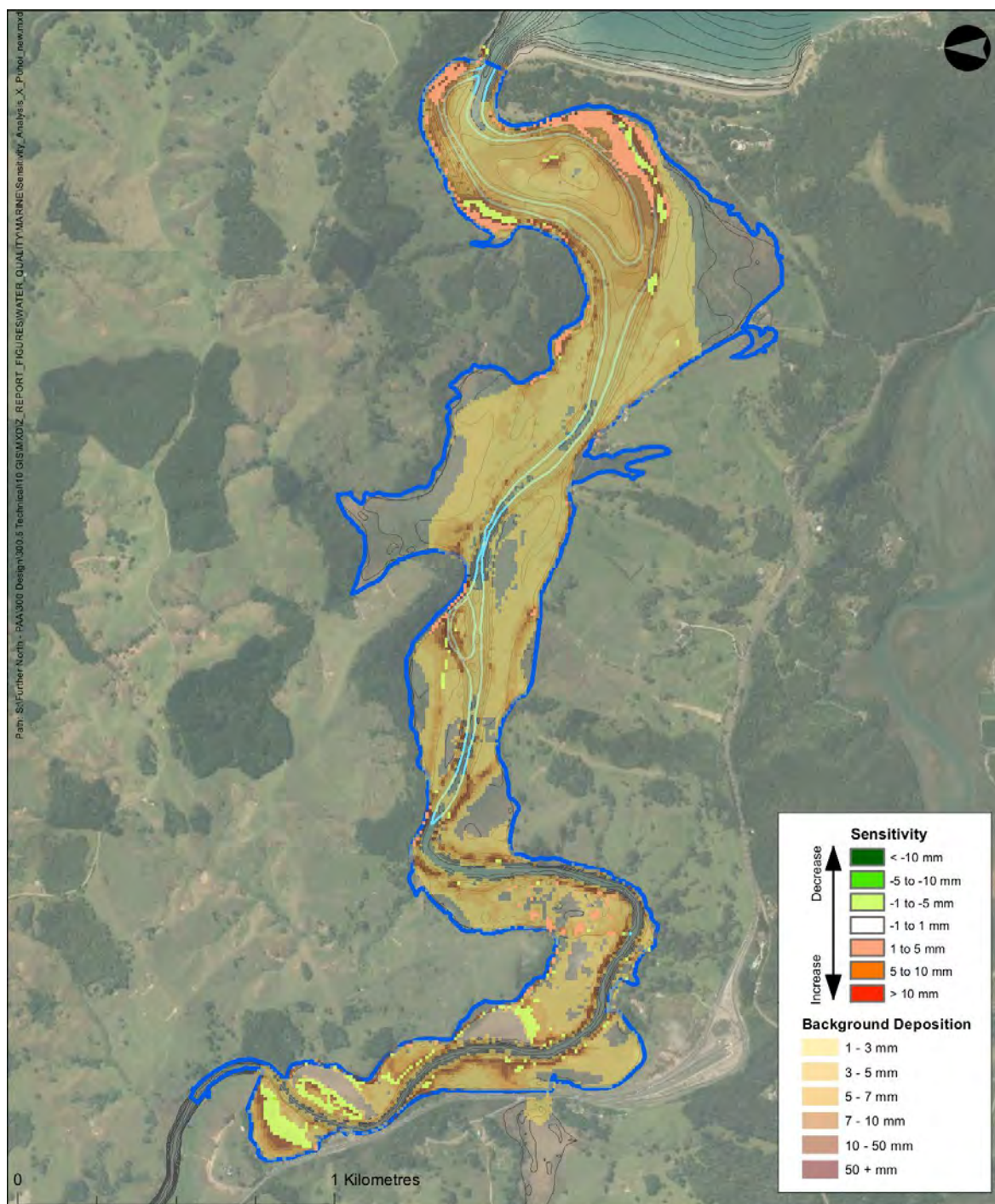
- Mean High Water Springs
- Lowest Astronomical Tide
- Aquaculture Farms

Puhoi Sensitivity Analysis
10 Year (ARI) Rainfall Event, Calm Wind Conditions
Peak Inputs at Neap Tide
FIGURE APPENDIX E: SENSITIVITY 17



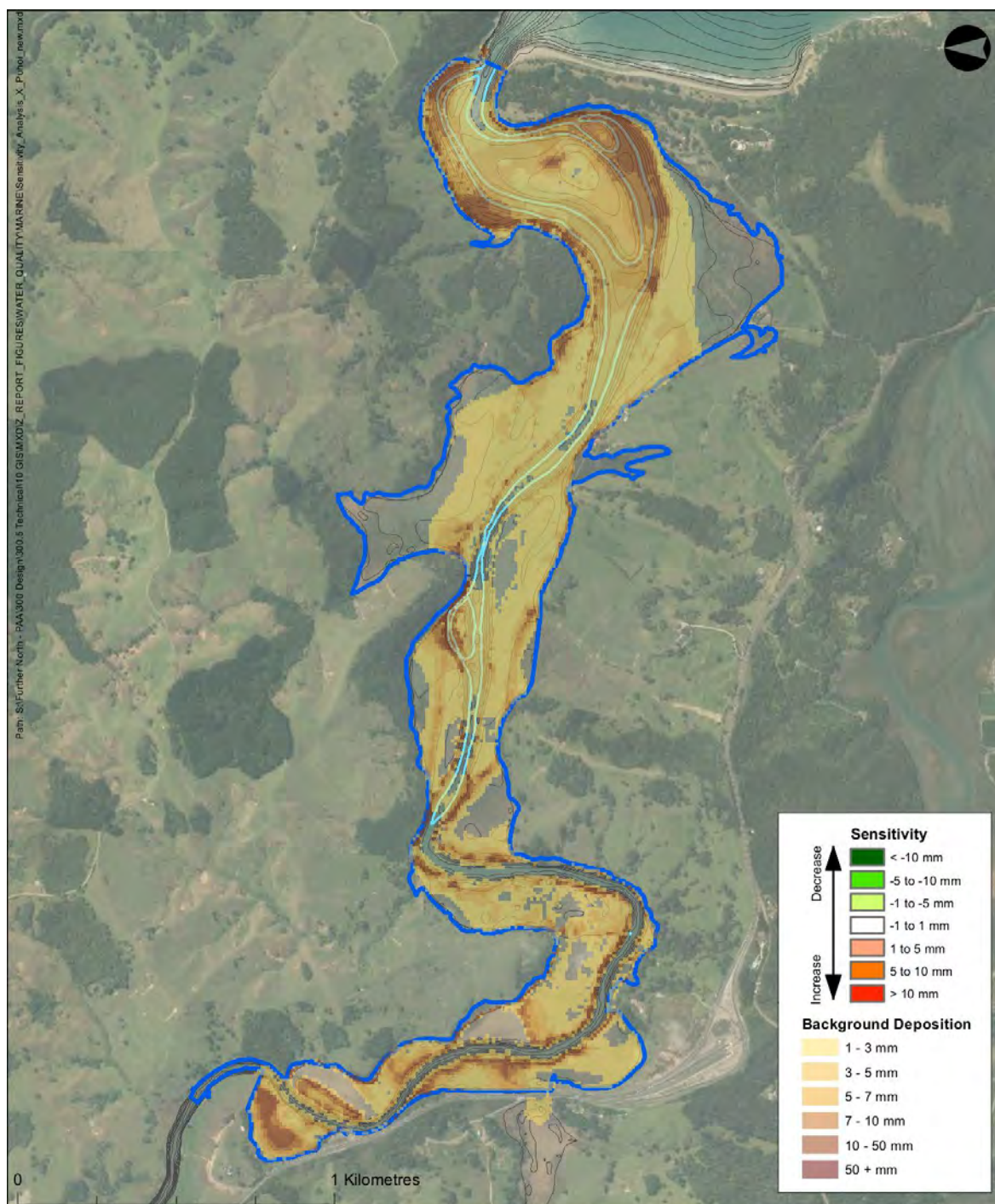
- Mean High Water Springs
- Lowest Astronomical Tide
- Aquaculture Farms

Puhoi Sensitivity Analysis
10 Year (ARI) Rainfall Event, Calm Wind Conditions
Peak Inputs at Spring Tide
FIGURE APPENDIX E: SENSITIVITY 18



- Mean High Water Springs
- Lowest Astronomical Tide
- Aquaculture Farms

Puhoi Sensitivity Analysis
10 Year (ARI) Rainfall Event, Calm Wind Conditions
Lower Bed Shear Stress Deposition Threshold
FIGURE APPENDIX E: SENSITIVITY 19



- Mean High Water Springs
- Lowest Astronomical Tide
- Aquaculture Farms

Puhoi Sensitivity Analysis
10 Year (ARI) Rainfall Event, Calm Wind Conditions
Higher Bed Shear Stress Deposition Threshold
FIGURE APPENDIX E: SENSITIVITY 20