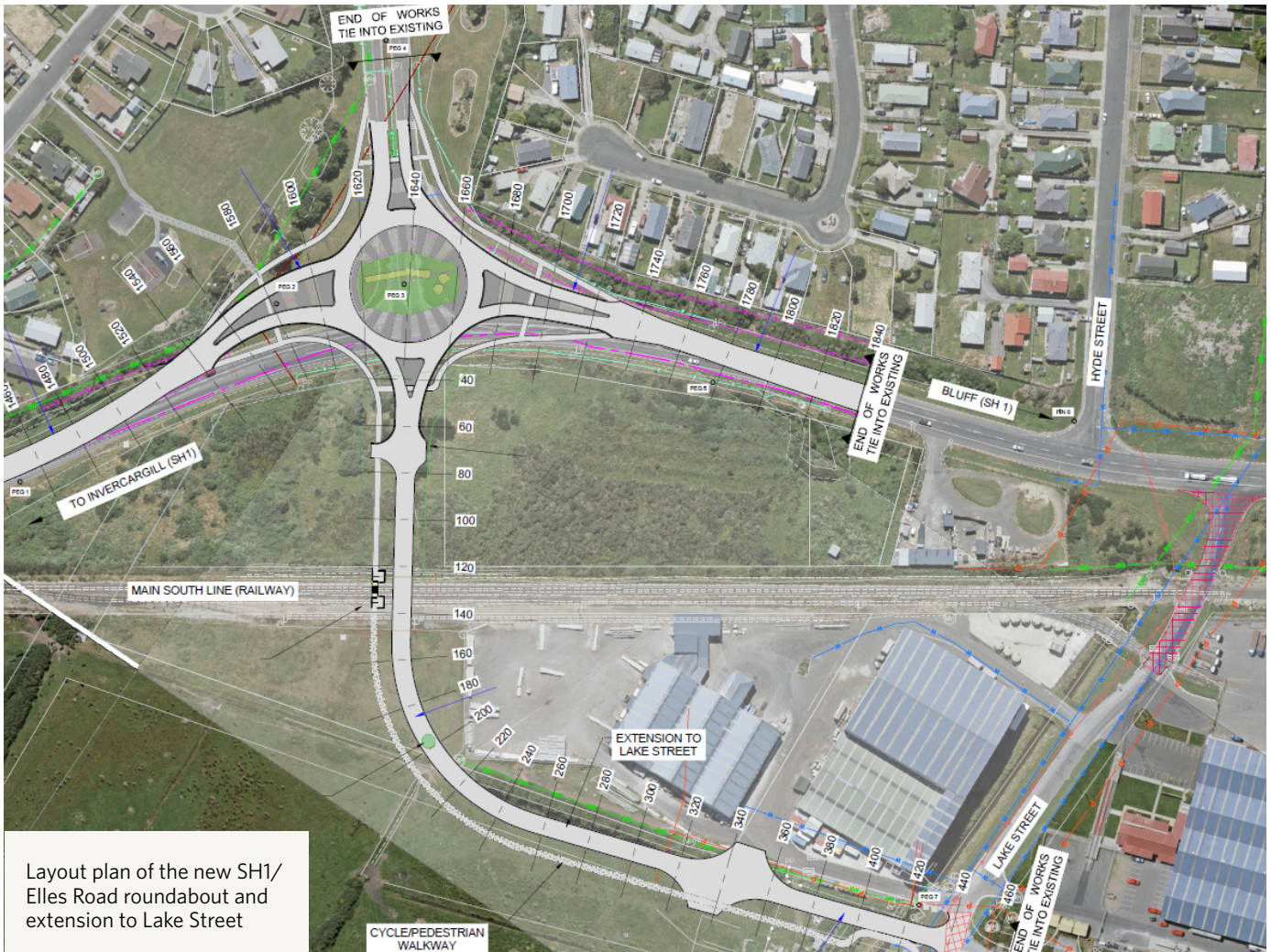




# SH1/Elles Road Intersection Safety Improvements



Layout plan of the new SH1/Elles Road roundabout and extension to Lake Street

Waka Kotahi NZ Transport Agency has awarded a \$5 million contract to build a four-leg roundabout to increase safety and reduce crashes at the State Highway 1/Elles Road intersection in south Invercargill, with work starting in early 2021.

Due for completion in early 2022, work on this project will be managed to minimise disruptions to road users.

The intersection has been identified as high-risk due to the number and frequency of crashes. In the last 10 years there have been 22 crashes – 12 resulting in injury, three of these resulted in serious injury.

Lake Street situated about 200m south of the SH1/Elles Road intersection provides access to an industrial site attracting

*continued on next page*

## Project benefits

- › Increase safety at a busy intersection.
- › Lower overall traffic speeds.
- › Reduce high-risk vehicle movements at road crossing points.
- › Provide greater safety for pedestrians and cyclists.
- › Improve connections to nearby walking and cycling paths.
- › Enhancement work to a wetland near the roundabout.



continued from page 1

increasing numbers of large trucks. This traffic growth means the Lake Street/SH1 intersection needed upgrading, so it made sense to improve this at the same time as the SH1 and Elles Road intersection.

Waka Kotahi crash modelling indicates that investing in a roundabout will deliver the best safety outcomes for all road users. The proposed design separates cyclists from the roundabout traffic lanes and guides them safely through the roundabout. It also links to existing separated cycling paths and a new one adjacent to the extension to Lake Street.

A wetland (pictured below) that's near the roundabout site and operates as a water quality treatment area for discharges from the existing road network, will be modified and enhanced as part of this project.

Waka Kotahi is working closely with the Invercargill City Council, Department of Conservation and local iwi to achieve this.



The new roundabout will eliminate the issue of traffic queueing on the highway as they wait to turn into Lake Street.



## PROJECT FEATURES

- › A new four-legged roundabout connecting SH1 to Bluff Highway with Elles Road.
- › A new link road to Lake Street.
- › The closure of the existing Lake Street entrance from SH1 that has an existing rail level crossing.
- › Safer facilities for cyclists at the roundabout and a cycle path adjacent to the extension to Lake Street.
- › Enhancement of a regionally rare wetland near the new roundabout.

### MORE INFORMATION



You can find more information at [nzta.govt.nz/projects/sh1-elles-road-intersection-safety-improvements/](https://nzta.govt.nz/projects/sh1-elles-road-intersection-safety-improvements/)  
Project contact: Jason Forbes, Project Manager, [jason.forbes@nzta.govt.nz](mailto:jason.forbes@nzta.govt.nz)