



SH1 Whangārei to Wellsford Central Safety Improvements Project

Waka Kotahi NZ Transport Agency is preparing to make safety improvements on State Highway 1 from Whangārei to Wellsford.

These safety improvements are being delivered as part of New Zealand's Road to Zero strategy which sets us on a path to achieve Vision Zero – an Aotearoa where no one is killed or seriously injured on our roads. As a step towards Vision Zero, we are setting an initial target of reducing deaths and serious injuries on our roads by 40% by the year 2030.

The proposed SH1 Whangārei to Wellsford Safety Improvements Project covers 83km of SH1, connecting the Northland and Auckland regions. It aims to reduce the number of people killed or seriously injured along this high-traffic corridor.

Due to the length of the SH1 Whangārei to Wellsford corridor, the project will be delivered as three separate projects – referred to as the Northern, Central and Southern projects.

The Central project – Port Marsden Highway roundabout to Brynderwyn Hills

The SH1 Whangārei to Wellsford Central Safety Improvements Project involves a 17km stretch of SH1 in Northland, from the Port Marsden Highway roundabout to just north of the Brynderwyn Hills.

Safety treatments

Road to Zero is guided by the Safe System approach – the international gold standard in road safety. It recognises that while mistakes on the road are inevitable, deaths and serious injuries from crashes are not. The Safe System approach seeks to create a road system that makes the safety of people a priority. It does this with four guiding principles:

1. We promote good choices but plan for mistakes.
2. We design for human vulnerability.
3. We strengthen all parts of the road transport system.
4. We have a shared responsibility.



Find out more

If you would like to find out more about the SH1 Whangārei to Wellsford projects or subscribe for updates, please visit our website.



www.nzta.govt.nz/projects/connecting-northland/sh1-whangarei-to-wellsford

If you have any questions regarding the projects, please email or call.



northlandproject@nzta.govt.nz



0800 4 HIGHWAYS (0800 44 44 49)

What improvements will I see?



Rumble strips are raised markings that make a sound when driven over. They give road users a warning when their vehicle is straying from its lane.



Flexible median barriers can reduce deaths and serious injuries by up to 65%. They prevent head-on crashes which is how most people are killed or seriously injured on our roads.



Wide centrelines create more space between lanes and help separate oncoming vehicles. They can reduce serious crashes by up to 20%.



Safety barriers and widened shoulders stop your vehicle before you hit something hard like a tree, power pole or oncoming vehicle. A wider sealed road shoulder provides room to recover if you lose control or need to take evasive action. They can reduce the number of people killed or seriously injured by up to 30%.



Roundabouts are the safest form of intersection for road users. They involve slower speeds with serious injuries less likely to happen – a safe systems approach. They also provide safer crossing places for pedestrians and cyclists.



Turnaround areas provide safe locations, usually on side roads, where drivers can safely turn around and change direction in the presence of flexible median barriers.

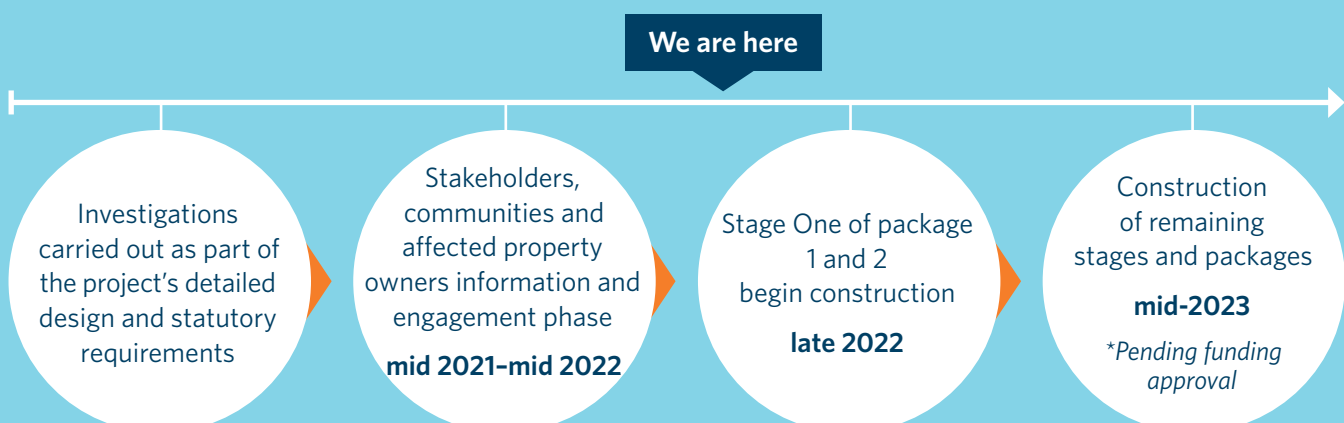
Current project status

As part of the early phase of the project we contacted stakeholders, businesses, affected landowners and the local community for feedback about our proposed safety improvements. The project team is continuing to keep the community informed as the design for the Central project develops.

The next stage of planning and design of the Central project is now underway.

This project will be delivered in stages over the next few years and is subject to confirmation of funding.

SH1 Whangārei to Wellsford Central section project timeline



Stage One works

(note: indicative graphic only)

Package 1

Commencing late 2022:

- Wider median from Port Marsden Highway roundabout to Lagoon Bridge.
- Flexible median barrier from Port Marsden Highway roundabout to Sandford Road.
- Flexible median safety posts from Sandford Road to Lagoon Bridge.

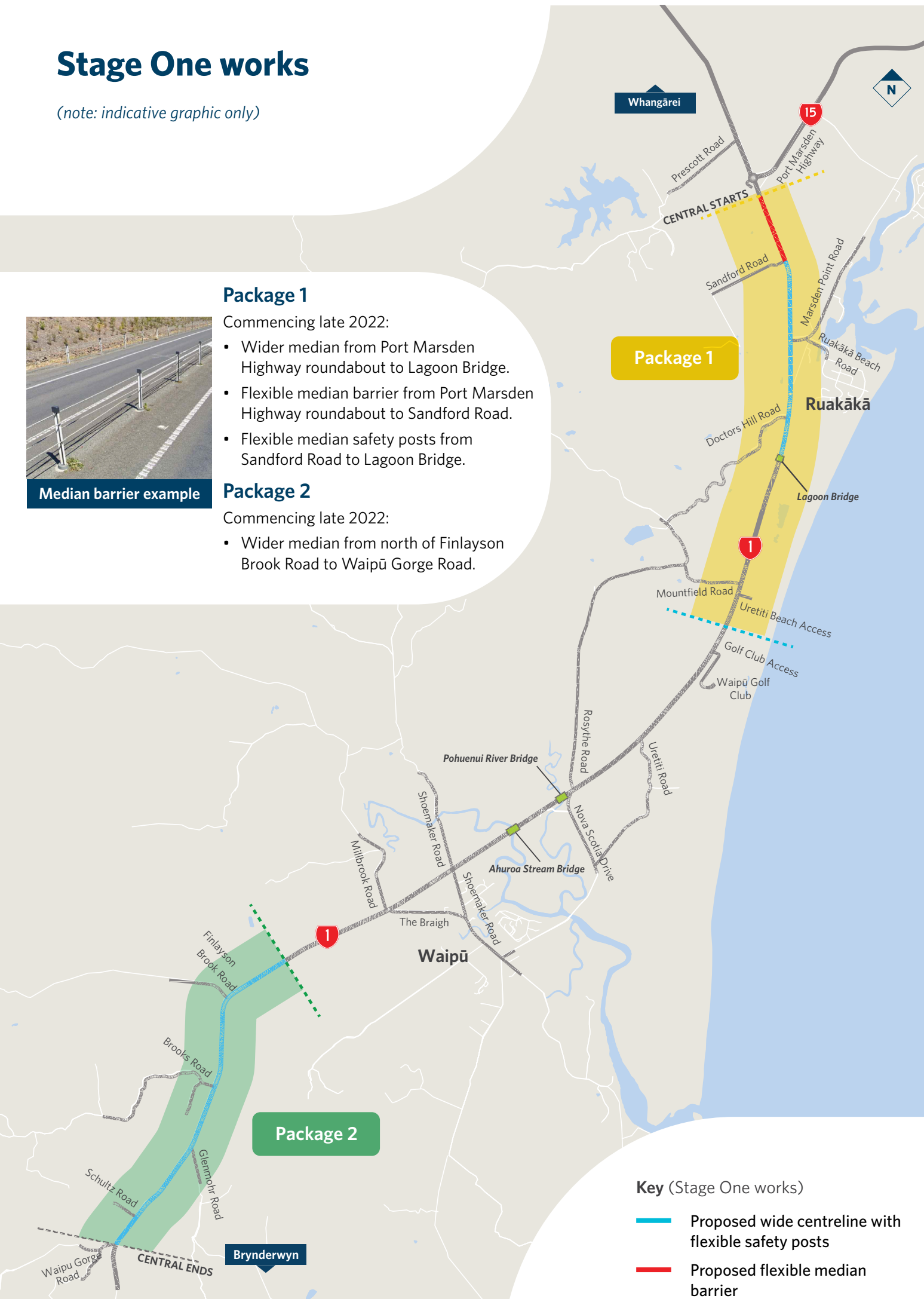
Package 2

Commencing late 2022:

- Wider median from north of Finlayson Brook Road to Waipū Gorge Road.



Median barrier example



Stage Two works

(note: indicative graphic only)

Package 1

Commencing mid-2023

- Flexible median barrier from Sandford Road to south of Uretiti Beach access.
- Turnaround facilities.
- Right turn bays.

Package 2

Commencing mid-2023/late 2023

- Flexible median barrier from Finlayson Brook Road to Waipū Gorge Road.
- Turnaround facilities.
- Right turn bays.

Package 3

Commencing late 2023/early 2024

- Flexible median barrier from south of Uretiti Beach access to Millbrook Road.
- Wide centre line from Millbrook Road to Finlayson Brook Road.
- Intersection safety improvements at Uretiti Road, Nova Scotia Drive/Rosythe Road, Shoemaker Road and The Braigh/Millbrook Road.
- Turnaround facilities.

