

# SH2 Elizabeth Street roundabout metering

## The NZ Transport Agency is introducing roundabout metering at the SH2 Elizabeth Street roundabout to help improve traffic flow in the morning peak.

From mid-April 2019, traffic lights will be operating on SH2 Takitimu Drive north-bound at the Elizabeth Street roundabout. The traffic lights will have orange and red lights - no green.

The traffic lights on SH2 will be phased to ease queues for SH2 south-bound traffic when it is busy - predominantly during the weekday morning peak.

The lights will only operate when traffic queues on SH2 south-bound activate the metering. When this happens, the lights on the north-bound approach will turn orange then red to stop the vehicles, allowing SH2 south-bound traffic to enter the roundabout.

Give way rules still apply when entering the roundabout. The roundabout metering will be trialled for up to 18 months, and may become permanent.

### ORANGE



Prepare to stop.  
Give way rules apply.

### RED



Stop until red  
light turns off.

### NO LIGHTS

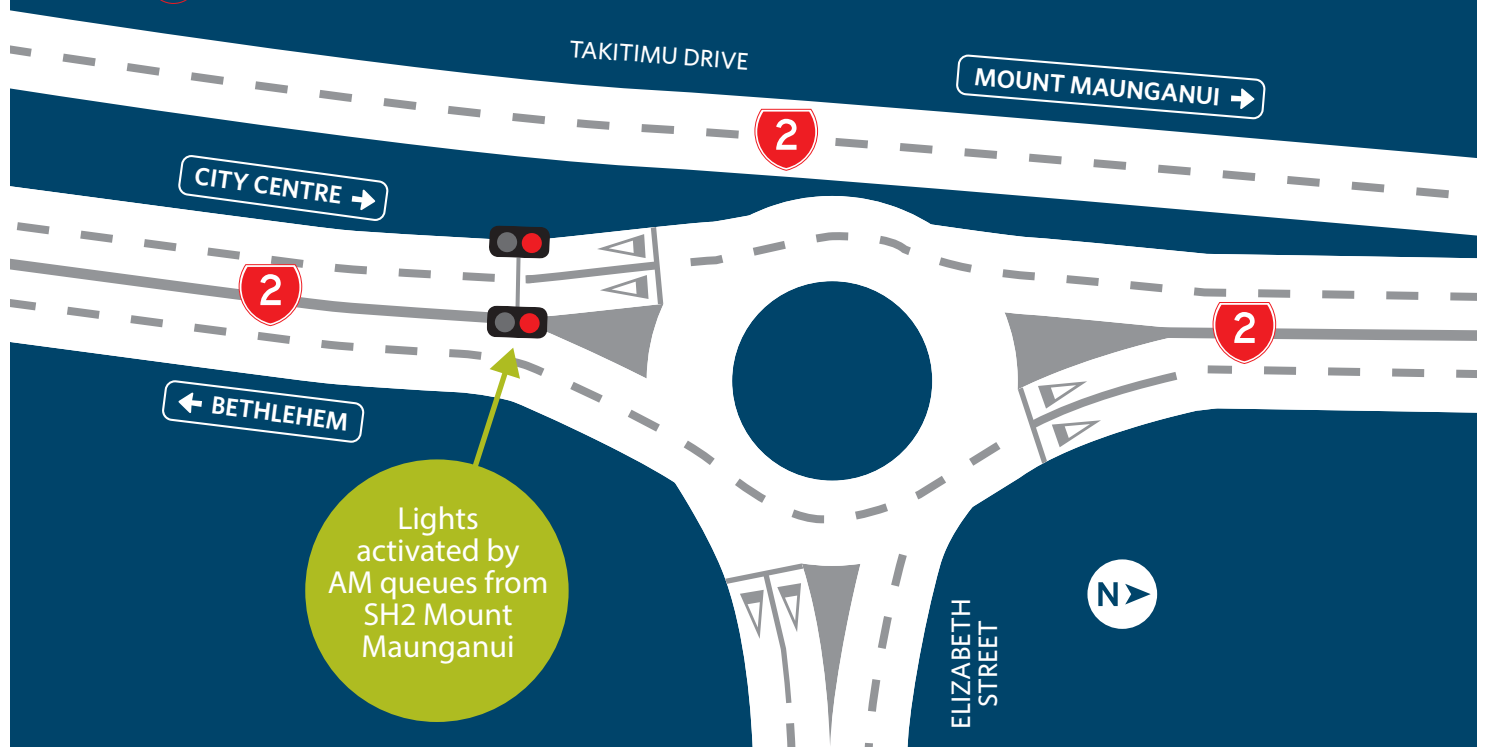


Proceed to roundabout.  
Give way rules apply.



## Standard give way rules still apply entering the roundabout

The traffic lights do not mean that the roundabout is signalised like the Maungatapu roundabout (SH29A). This is the same system that was recently installed at SH29A Barkes Corner roundabout.



## Keeping you informed



0800 772 532



[nzta.govt.nz/elizabethstreet](https://nzta.govt.nz/elizabethstreet)



NZTAWaikatoBoP



[bop@nzta.govt.nz](mailto:bop@nzta.govt.nz)