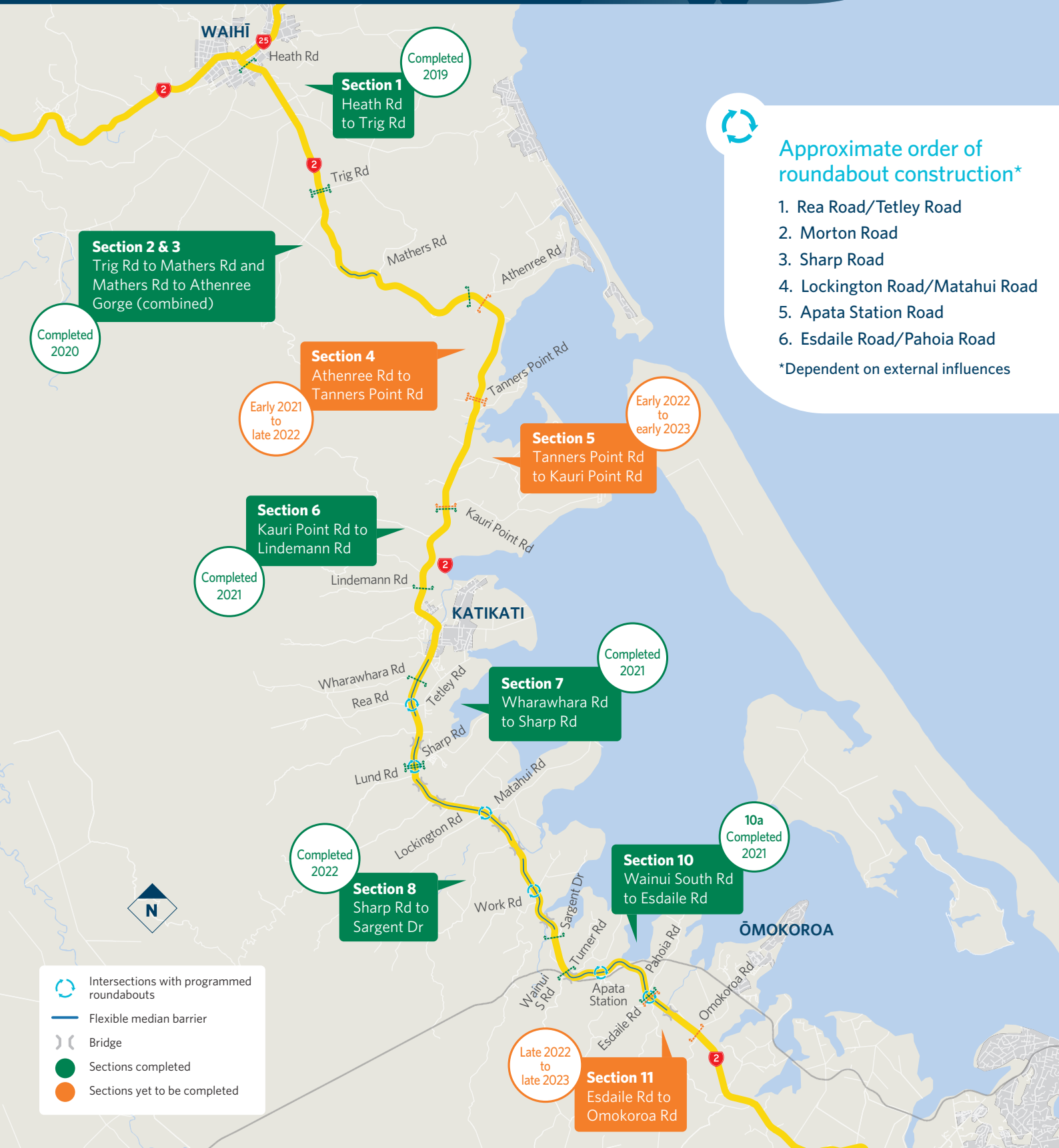


2

Waihi to Ōmokoroa safety improvements



Approximate order of roundabout construction*

1. Rea Road/Tetley Road
2. Morton Road
3. Sharp Road
4. Lockington Road/Matakui Road
5. Apata Station Road
6. Esdaile Road/Pahoia Road

*Dependent on external influences

nzta.govt.nz/w2o