

# Te Ahu a Turanga: Manawatū Tararua Highway Project Environmental & Cultural Design Framework

The design for the new road will be based on an Environmental and Cultural Design Framework (ECDF) which has been developed with local iwi, councils and stakeholders.

The ECDF sets out the overarching design principles and a vision which will be applied to the final design of the project including its structures, landform and mitigation planting.

The ECDF is consistent with the form and content of a preliminary Urban and Landscape Design Framework (ULDF) prepared in accordance with NZ Transport Agency's Urban Design Guidelines and Landscape Guidelines.

## PRINCIPLES

### Connectivity: Reconnecting people and places

- Reconnect local communities with gorge, landscape, trails, recreational areas
- Landscaping and mitigation to retain and connect vegetation patches/areas, enhance habitat and ecological corridors

### Human Landmarks: Respecting the cultural landscape

- Recognise, protect and where appropriate highlight human features in the vicinity of the highway such as sites of significance to mana whenua, the Manawatū Gorge, Parahaki Island, Scenic Reserve, remnant indigenous forests
- Consider Māori values and principles in the process of design and construction

### Landscape and Natural Features: Integrating infrastructure

- Recognise, protect and highlight natural features
- Integrate earthworks with surroundings
- Architectural features designed to enhance experience of the motorist and not detract from the landscape

### Environmental Health: Design with nature

- Maintain natural processes, landform, water courses, vegetative cover and land uses

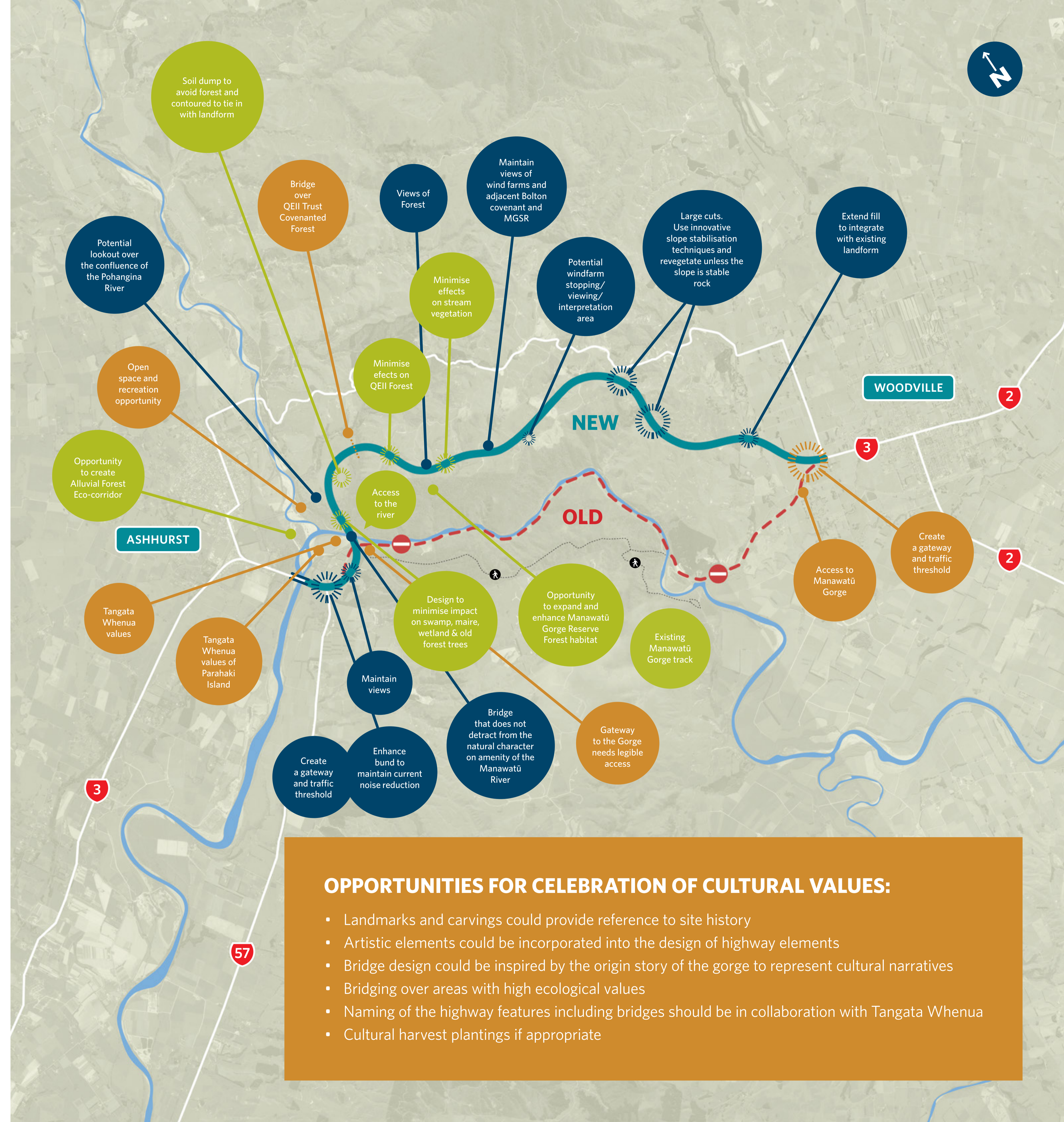
### Amenity: Memorable experience

- Highway integrated into the landscape to enhance road user experience and reinforce sense of place
- Integrate mana whenua narratives into the design of structures

To find out more:

0800 740 560  
teahaturanga@nzta.govt.nz

[www.nzta.govt.nz/te-ahu-a-turanga](http://www.nzta.govt.nz/te-ahu-a-turanga)  
[www.facebook.com/nztacni](https://www.facebook.com/nztacni)  
[www.twitter.com/nztacni](https://www.twitter.com/nztacni)



## OPPORTUNITIES FOR CELEBRATION OF CULTURAL VALUES:

- Landmarks and carvings could provide reference to site history
- Artistic elements could be incorporated into the design of highway elements
- Bridge design could be inspired by the origin story of the gorge to represent cultural narratives
- Bridging over areas with high ecological values
- Naming of the highway features including bridges should be in collaboration with Tangata Whenua
- Cultural harvest plantings if appropriate