

WHAT'S HAPPENED?

WHAT'S HAPPENING NEXT?

2024

ALLIANCE

In July 2019 we selected a consortium made up of Fulton Hogan, HEB Construction Limited, Aurecon Limited and WSP-Opus as preferred tenderers.

They are now our interim project alliance partners and alongside our iwi partners, will work with the NZ Transport Agency to deliver the design, regional consenting and construction of the project.

Fulton Hogan

HEB construction

aurecon

WSP | OPUS

TRANSPORT CORRIDOR DESIGNATION

We designated the transport corridor for the new State Highway and shared path across the Ruahine Ranges in mid-2019. Subsequently, the Environment Court has received three appeals to the designation, which we are working through.

Once finalised, the designation will establish a corridor within which the detailed design of the project can occur - our next stage of work.



SHARED PATH AND RECREATIONAL FACILITIES

As part of the project we will provide a separate sealed path for pedestrians and cyclists from Ashhurst and Woodville. We will work with iwi, community groups, councils and other key stakeholders to develop a design which meets the consent requirements and promotes walking and cycling.

Another exciting feature is the \$1 million fund to create recreational paths to connect to the new shared path, to promote tourism and economic growth. There is still some detail to be finalised around how this will be administered and where these paths will go.



DEVELOPING THE DESIGN

Some of the key highlights of the preliminary concept design developed during the tendering process are available here today and any feedback is welcome.

There are some changes from our earlier concept, which reflect feedback we received through the designation process. As this is preliminary we'll work closely with iwi, community and stakeholders to refine the concept design - which we'll share later in the year.

The refined concept design will show the new bridge across the Manawatū River at the western end of the Manawatū Gorge, the shared path, ecological restoration (such as planting) and visitor facilities. The design and proposed method for construction will be subject to further Resource Management Act approvals.



CONSENTS FOR ENABLING WORKS

We have lodged the first application for regional consents for the enabling works with Horizons Regional Council. Further applications will be lodged later this year. We will work with iwi, landowners and councils as we progress the enabling works. We are also preparing resource consent applications for the detailed design of the project and plan to lodge these late this year or early next year.

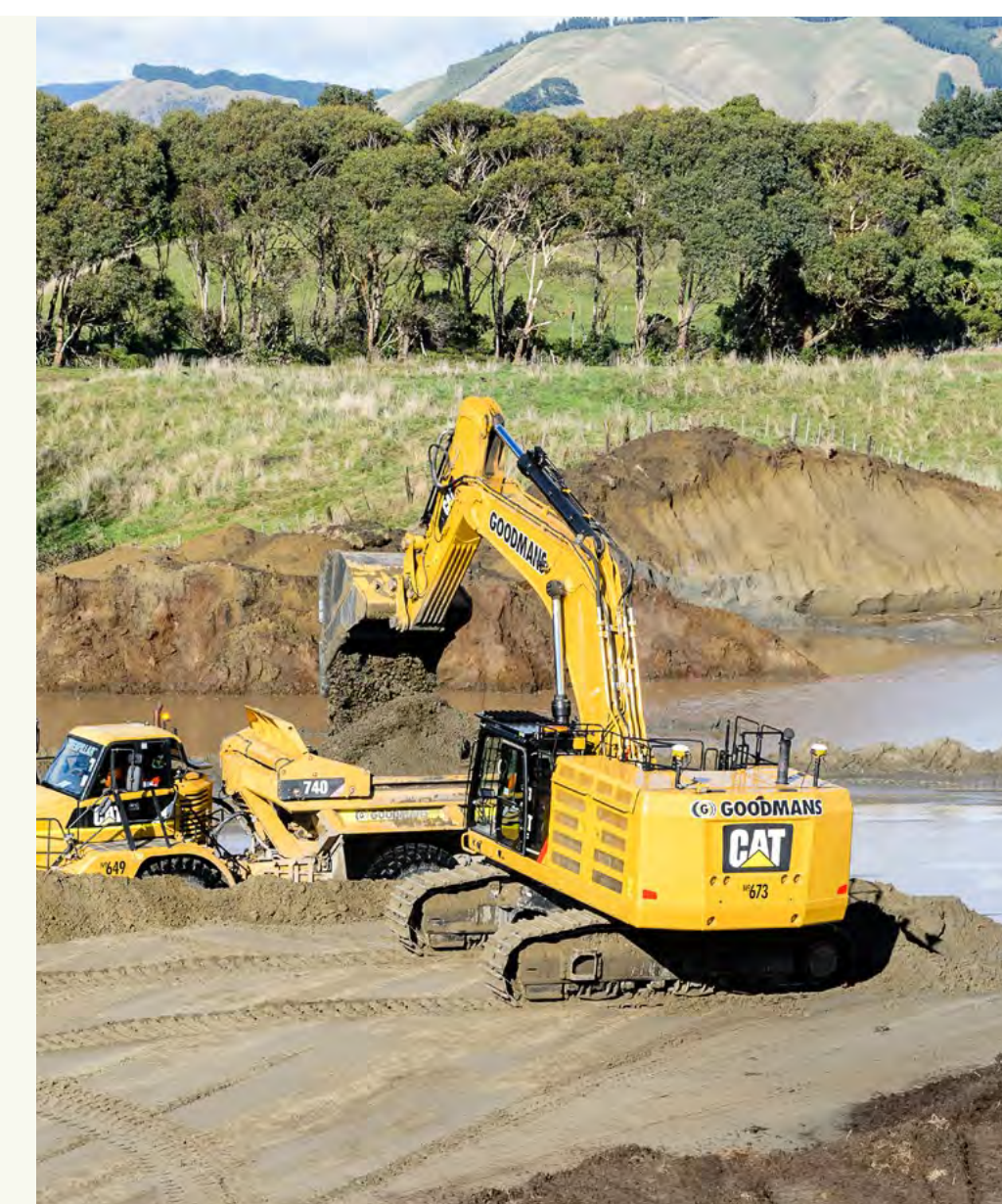


CONSTRUCTION WORKS

We are gearing up to start our enabling works this coming Summer construction season. These works are required before the main construction of the new road can begin and will give us access to the site and allow us to construct site bases and storage areas.

We will continue to develop our construction methodology and seek approvals on aspects including erosion and sediment control, as well as our plans to manage construction traffic, noise, vibration and dust effects.

The main construction for the new road will get underway in the following construction season (Summer 2020/21).



WHAT CAN YOU DO?

We welcome feedback on any aspect of the project being shared with you today. Please feel free to contact the team to provide us with information you think we need to know as we develop our designs and to discuss any concerns you may have about how we'll be working.

As part of the consenting process, you will be able to make submissions on the way we intend to construct the roading corridor. These consents will be notified by Horizons Regional Council.

CONSTRUCTION FINISH

Our plan is to have the new transport corridor open to the public by the end of 2024.

WHAT ARE 'ENABLING WORKS'?

Before we can begin to construct the main roadway and shared path, we need to carry out a number of essential works. These are called 'enabling works' and include:

Building access roads to reach the transport corridor

Building 'lay down' areas for materials

Fencing

Constructing site bases

Constructing storage areas

Site investigations



CONTACT US ON

0800 740 560 or
teahaturanga@nzta.govt.nz
if you have any questions or
require more information.